

OFFICE OF THE CHANCELLOR

OFFICE OF THE VICE CHANCELLOR FOR STUDENTS
Org Code: MAVCS

Vice Chancellor for Students, #89325	1.00
Operations Coordinator, PBB, #79316	1.00
Associate Vice Chancellor, #89309*	1.00
Secretary III, SR16, #14337	1.00
Assistant Vice Chancellor, #89133**	1.00
Assistant Vice Chancellor, #89479***	1.00
Specialist Type Faculty:	3.00
#82637, #83035, #82630	
IT Specialist, PBB, #78217	1.00
Web Developer, PBA, #78218	1.00
IT Specialist, PBA, #78462	1.00
Director of Student Affairs, #89298	1.00

ADMINISTRATIVE SERVICES OFFICE
Org Code: MAASVS

Administrative Svcs Mgr, PBC, #80146	1.00
Fiscal Specialist, PBB, #78065	1.00
Administrative Officer, PBB, #80089	1.00
Human Resources Specialist, PBB, #81879	1.00
Personnel Clerk V, SR13, #44556	1.00

STATE OF HAWAII
UNIVERSITY OF HAWAII
UNIVERSITY OF HAWAII AT MĀNOA
OFFICE OF THE VICE CHANCELLOR
FOR STUDENTS

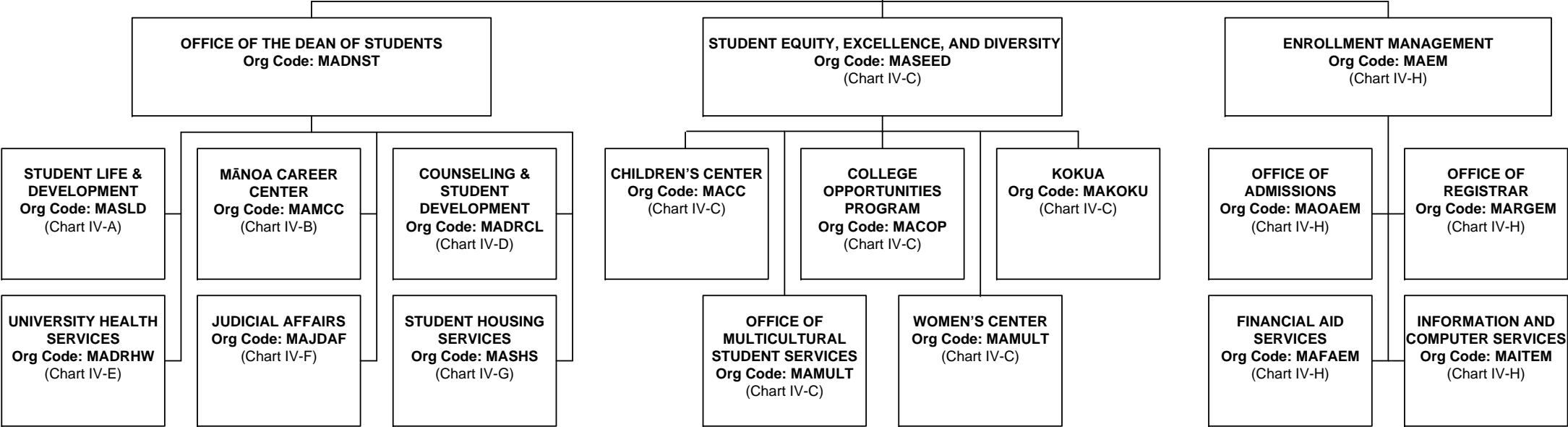
ORGANIZATIONAL CHART
CHART IV

GENERAL FUND FTE 18.00

*Also serves as Dean of Students
**Also serves as Enrollment Management and
Director
***Also serves as Director of SEED

GRAND TOTAL BY FUND

GENERAL FUND FTE	193.00
GENERAL FUND FTE (AUTH TEMP)	4.00
SPECIAL FUND (B) FTE	95.00
REVOLVING FUND (W) FTE	18.25



STATE OF HAWAI'I

UNIVERSITY OF HAWAI'I

UNIVERSITY OF HAWAI'I AT MĀNOA

OFFICE OF THE VICE CHANCELLOR

FOR STUDENTS

OFFICE OF THE DEAN OF STUDENTS

STUDENT LIFE & DEVELOPMENT

ORGANIZATIONAL CHART

CHART IV-A

GENERAL FUND FTE	11.00
SPECIAL FUND FTE (B)	26.00
REVOLVING FUND FTE (W)	4.00

OFFICE OF THE CHANCELLOR

OFFICE OF THE VICE CHANCELLOR FOR STUDENTS

OFFICE OF THE DEAN OF STUDENTS

STUDENT LIFE & DEVELOPMENT

Org Code: MASLD

Director of Student Affairs (SLD), #89190	1.00
Student Services Specialist, PBA, #78447	1.00

STUDENT LIFE BUSINESS SERVICES

Org Code: MABSSL

Student Services Specialist, PBB, #79129	1.00
Administrative Svcs Manager, PBB, #80163(B)	1.00 (B)
Administrative & Fiscal Support Specialist, PBA:	
#78450 (B), #79408 (B), #79609 (B), #80649 (B)	4.00 (B)
Student Services Specialist, PBB, #80660(B)	1.00 (B)
Bldg Maintenance Worker, BC09, #28597(B)	1.00 (B)
Bldg & Grounds Utility Worker, BC05,	
#44085 (B), #44109 (B), #45379 (B)	3.00 (B)
Student Services Specialist, PBA, #78831(B)	1.00 (B)
Janitor III, WS02, #44089 (B)	1.00 (B)
Janitor II, BC02:	
#25329 (B), #25392 (B), #46560 (B),	5.00 (B)
#900563 (B), #900564 (B)	
System Admin, PBB, #79661 (B)	1.00 (B)

STUDENT EVENTS &
CAMPUS LIFE SERVICES

Org Code: MASESL

Specialist Type Faculty, #88328 (B)	1.00 (B)
Specialist Type Faculty, #82864	1.00
Specialist Type Faculty, #70084 (W)	1.00 (W)
Student Services Specialist, PBB, #81486 (W)	1.00 (W)
Specialist Type Faculty, #88334 (W)	1.00 (W)
Student Services Specialist, PBB, #78991(B)	1.00 (B)
Student Services Specialist, PBA:	
#80631 (B), #80942 (B)	2.00 (B)
Specialist Type Faculty, #88765 (B)	1.00 (B)

STUDENT INVOLVEMENT &
LEADERSHIP DEVELOPMENT PROGRAMS

Org Code: MASISL

Specialist Type Faculty, #83705	1.00
Specialist Type Faculty:	
#70078, #82597	2.00
Student Services Specialist, PBB, #81510 (W)	1.00 (W)

STUDENT RECREATION SERVICES

Org Code: MASRSL

Specialist Type Faculty, #85083	1.00
Student Services Specialist, PBB, #77071	1.00
Specialist Type Faculty, #83512	1.00
Office Assistant III, SR08, #26460	1.00
Student Services Specialist, PBB, #80025 (B)	1.00 (B)
Student Services Specialist, PBA, #79313 (B)	1.00 (B)
Student Services Specialist, PBB, #79713 (B)	1.00 (B)

OFFICE OF THE CHANCELLOR

OFFICE OF THE VICE CHANCELLOR FOR STUDENTS

OFFICE OF THE DEAN OF STUDENTS

MĀNOA CAREER CENTER
Org Code: MAMCC

Specialist Type Faculty, #82644	1.00
Secretary II, SR14, #11046	1.00
IT Specialist, #78476*	1.00
IT Specialist, PBA, #78604	1.00
Graphic Designer, PBA, #80453T	1.00 T
Student Services Specialist, PBD, #80661*	1.00

CAREER SERVICES
Org Code: MACSCD

Specialist Type Faculty:	4.00
#70072, #82701, #88125, #88325,	
Student Services Specialist, PBB, #81434	1.00

COOPERATIVE EDUCATION
Org Code: MACECD

Specialist Type Faculty #88117	1.00
Specialist Type Faculty #82642	1.00
Office Assistant IV, SR10, #46550	1.00

STUDENT EMPLOYMENT SERVICES
Org Code: MASECD

Student Services Specialist, PBB, #81481	1.00
Student Services Specialist, PBA, #78605	1.00

STATE OF HAWAI'I
UNIVERSITY OF HAWAI'I
UNIVERSITY OF HAWAI'I AT MĀNOA
OFFICE OF THE VICE CHANCELLOR
FOR STUDENTS
OFFICE OF THE DEAN OF STUDENTS
MĀNOA CAREER CENTER

ORGANIZATIONAL CHART
CHART IV-B

GENERAL FUND FTE 15.00
GENERAL FUND FTE (AUTH TEMP) 1.00

*Pending reclassification

OFFICE OF THE CHANCELLOR

OFFICE OF THE VICE CHANCELLOR FOR STUDENTS

STUDENT EQUITY, EXCELLENCE AND DIVERSITY
Org Code: MASEED

Assistant Vice Chancellor, #89479***

Fiscal Specialist, PBB:	2.00
#78525, #81088	
Specialist Type Faculty:	5.00
#70068, #70069, #70070, #70071, #82594	
Educational Specialist, PBB, #81063	1.00
Program Manager, PBB, #81904	1.00
Student Services Specialist, PBB, #78524	1.00
Office Assistant III, SR08, #43052	1.00
Student Services Specialist, PBB, #78970	1.00
Student Services Specialist, PBB, #77860	1.00

STATE OF HAWAI'I
UNIVERSITY OF HAWAI'I
UNIVERSITY OF HAWAI'I AT MĀNOA
OFFICE OF THE VICE CHANCELLOR
FOR STUDENTS
STUDENT EQUITY, EXCELLENCE AND
DIVERSITY

ORGANIZATIONAL CHART
CHART IV-C

GENERAL FUND FTE	38.00*
GENERAL FUND FTE (AUTH TEMP)	3.00
SPECIAL FUND FTE (B)	4.00

*Abolished position #70073 (1.00 FTE)
*** Assistant Vice Chancellor position #89479
position count reflected on chart IV.

CHILDREN'S CENTER
Org Code: MACC

Child Care Site Director, PBC, #80232	1.00
Administrative Officer, PBA, #80739 (B)	1.00 (B)
Educational Associate, PBB, #80029	1.00
Child Care Cntr Teacher, PBB:	
#80109	1.00
#80234T, #80455T, #80424T	3.00 T
Child Care Cntr Teacher, PBA:	
#78917, #80233,	2.00
#80541 (B), #80588 (B), #80611 (B)	3.00 (B)

COLLEGE OPPORTUNITIES PROGRAM
Org Code: MACOP

Specialist Type Faculty, #83548	1.00
Student Services Specialist, PBB, #80606	1.00
Student Services Specialist, PBA, #78538	1.00
Office Assistant IV, SR10, #23086	1.00

KOKUA
Org Code: MAKOKU

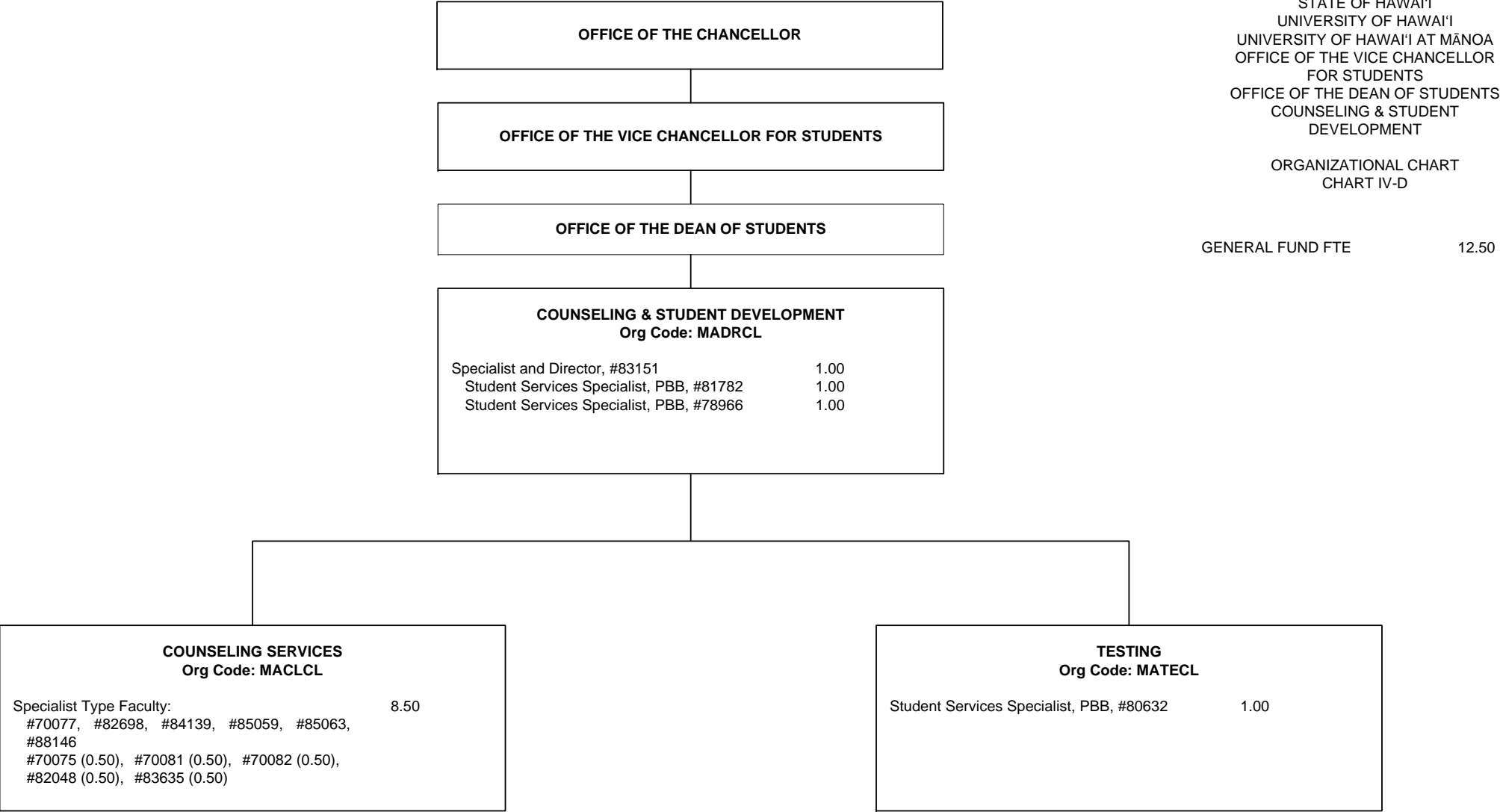
Program Manager, PBC, #80666	1.00
Administrative Officer, PBA, #77032	1.00
Educational Specialist, PBB:	5.00
#78261, #78262, #80608, #80636, #81566	
Educational Specialist, PBA, #81102	1.00

OFFICE OF MULTICULTURAL STUDENT SERVICES
Org Code: MAMULT

Program Manager, PBB, #80517	1.00
Student Services Specialist, PBA:	2.00
#81799, #81801	

WOMEN'S CENTER
Org Code: MAWC

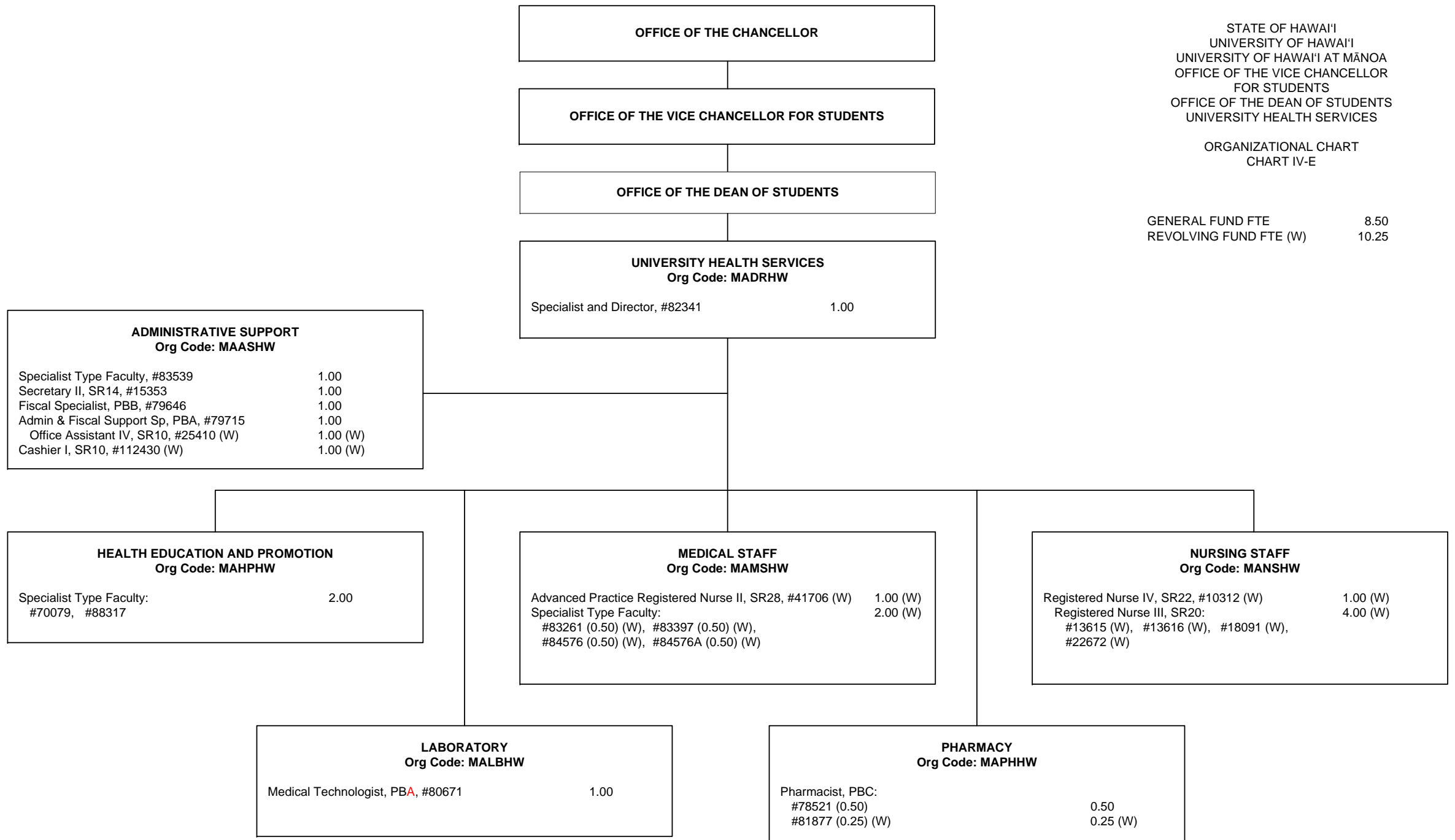
Specialist Type Faculty:	3.00
#70074, #84581, #88333	
Student Services Specialist, PBB, #78526	1.00

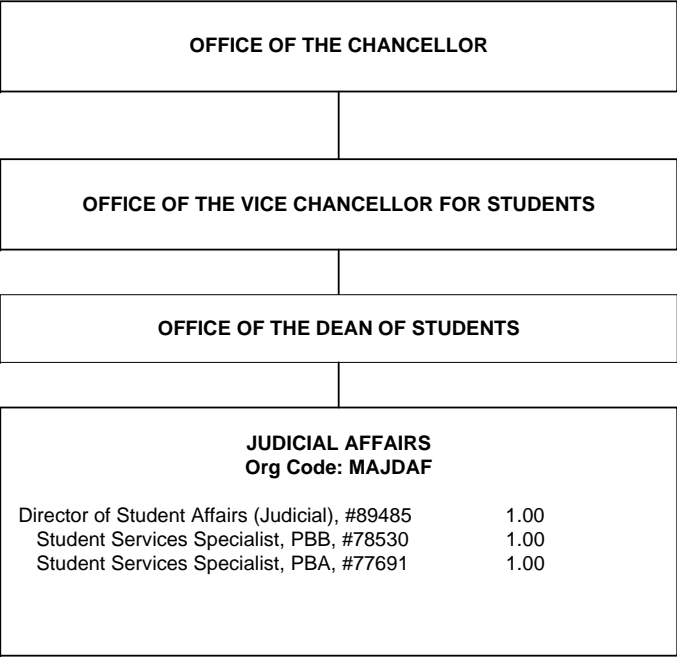


STATE OF HAWAII
UNIVERSITY OF HAWAII
UNIVERSITY OF HAWAII AT MĀNOA
OFFICE OF THE VICE CHANCELLOR
FOR STUDENTS
OFFICE OF THE DEAN OF STUDENTS
UNIVERSITY HEALTH SERVICES

ORGANIZATIONAL CHART
CHART IV-E

GENERAL FUND FTE	8.50
REVOLVING FUND FTE (W)	10.25





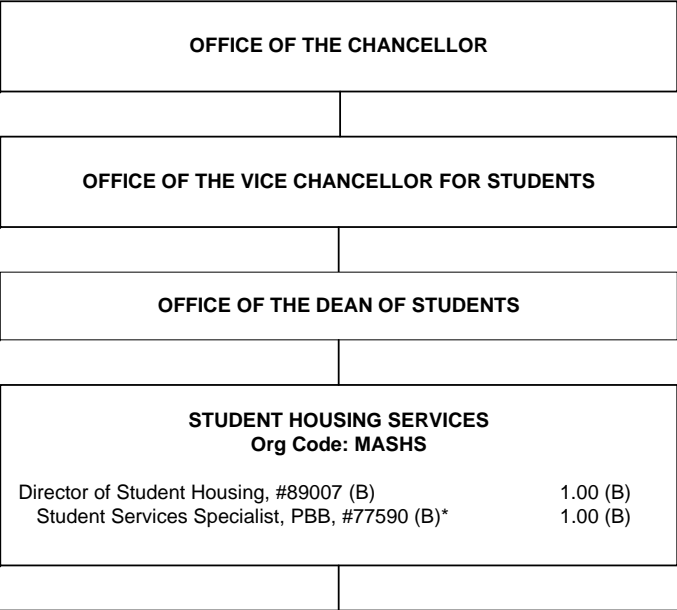
STATE OF HAWAI'I
UNIVERSITY OF HAWAI'I
UNIVERSITY OF HAWAI'I AT MĀNOA
OFFICE OF THE VICE CHANCELLOR
FOR STUDENTS
OFFICE OF THE DEAN OF STUDENTS
JUDICIAL AFFAIRS

ORGANIZATIONAL CHART
CHART IV-F

GENERAL FUND FTE3.00

* Pending establishment
** Position abolished, to be redescribed/
reestablished

¹ Supervised by Environmental Health & Safety



STATE OF HAWAI'I
UNIVERSITY OF HAWAI'I
UNIVERSITY OF HAWAI'I AT MĀNOA
OFFICE OF THE VICE CHANCELLOR
FOR STUDENTS
OFFICE OF THE DEAN OF STUDENTS
STUDENT HOUSING SERVICES

ORGANIZATIONAL CHART
CHART IV-G

GENERAL FUND FTE6.00
SPECIAL FUND FTE (B)65.00***

* Pending establishment
** Position abolished, to be redescribed/
reestablished
*** New reallocated positions to be established
(99074F-99093F) 20.00 FTE (B)

¹ Supervised by Environmental Health & Safety

OPERATIONS
Org Code: MAOPSH

Auxiliary & Facilities Services Manager, PBB, #80629 (B)1.00 (B)
Auxiliary & Facilities Services Officer, PBA:
#78141 (B), #79641 (B)*2.00 (B)
Office Assistant III, SR08, #24249 (B)1.00 (B)

MAINTENANCE STAFF:

Building Maintenance Supervisor I, F109, #900548 (B)1.00 (B)
Building Maintenance Worker I, BC09:
#013578 (B), #031242 (B), #031245 (B), #110585 (B)4.00 (B)
#900513, #9005142.00
Plumber I, BC10, #900603 (B)1.00 (B)
Electrician I, BC10, #900604 (B)1.00 (B)

GROUNDS STAFF:

Groundskeeper II, WS02, #24251 (B)1.00 (B)
Groundskeeper I, BC02, #31246 (B)1.00 (B)

PROJECT & PLANT MANAGEMENT SUPPORT:

Registered Architect, PBB, #77005 (B)1.00 (B)
Environmental & Health Safety Sp, PBA, #81680 (B)¹1.00 (B)

ADMINISTRATION
Org Code: MAADSH

Administrative Svcs Mgr, PBB, #81612 (B)1.00 (B)

FISCAL:

Fiscal Specialist, Senior, PBB, #80193 (B)1.00 (B)
Adm & Fiscal Supp Sp, PBA, #77029 (B)1.00 (B)
Cashier I, SR10, #28336 (B)1.00 (B)
Office Assistant IV, SR10, #18701 (B)1.00 (B)

ASSIGNMENTS:

Administrative Officer, PBB, #79170 (B)*1.00 (B)
Student Services Specialist, PBA, #787321.00
Student Services Specialist, PBA, #79330 (B)1.00 (B)
Student Services Specialist, PBA, #79885 (B)1.00 (B)
Office Assistant III, SR08, #18115 (B)**1.00 (B)

CONFERENCES:

Student Services Specialist, PBB, #80219 (B)1.00 (B)

PERSONNEL:

Human Resources Sp, PBB, #81103 (B)1.00 (B)
Human Resources Sp, PBA, #787291.00

INFORMATION TECHNOLOGY:

IT Specialist, PBB:
#78311 (B), #81361 (B)2.00 (B)

RESIDENTIAL LIFE
Org Code: MARLSH

Residence Life Mgr, PBB, #80630 (B)1.00 (B)
Office Assistant III, SR08:
#23582 (B), #28545 (B)2.00 (B)

TRAINING & LEADERSHIP:

Residence Life Specialist, PBB, #81611 (B)1.00 (B)
Residence Life Specialist, PBA, #80598 (B)1.00 (B)

FAMILY RELATIONS & OFF-CAMPUS HOUSING:

RESIDENTIAL AREAS:

Residence Life Specialist, PBB:
#80594 (B), #80597 (B),#80825 (B)3.00 (B)
Residence Life Specialist, PBA, #80924 (B)1.00 (B)

HALL STAFF:

Residence Life Specialist, PBA:
#78728 (B), #78959 (B), #78960 (B), #78961 (B),6.00 (B)
#78962 (B), #80595 (B)
#78730, #787312.00

OFFICE OF THE CHANCELLOR

OFFICE OF THE VICE CHANCELLOR FOR STUDENTS

ENROLLMENT MANAGEMENT
Org Code: MAEM

Assistant Vice Chancellor, #89133**	
Admin & Fiscal Support Sp, PBA, #77488	1.00
Administrative Officer, PBB, #78674	1.00
Account Clerk III, SR-11*	
Admissions Specialist, PBB, #80096	1.00

INFORMATION AND COMPUTER SERVICES
Org Code: MAITEM

IT Manager, PBB, #80018	1.00
IT Specialist, PBB: #78228, #80017, #81134	3.00

OFFICE OF ADMISSIONS
Org Code: MAOAEM

Admissions Manager, PBC, #81154	1.00
Secretary II, SR14, #14866	1.00
Clerk Supervisor III, SR14, #00748	1.00
Office Assistant IV, SR10: #12842, #13495, #13496, #18009, #26538, #900015	6.00
Office Assistant III, SR8, #900016	1.00
Admissions Specialist, PBB: #78658, #80626, #81071, #81414, #81734	5.00
Admissions Specialist, PBB, #80625	1.00
Office Assistant IV, SR10, #11496	1.00
Admissions Specialist, PBB, #80530	1.00
Admissions Specialist, PBB, #78660	1.00
Admissions Specialist, PBA: #77518, #77519, #77520, #77521, #77885, #78659	6.00
Admissions Specialist, PBB, #78406	1.00
Admissions Specialist, PBA, #79845	1.00
Office Assistant IV, SR10: #15501, #40004, #40005, #900159	4.00
Admissions Manager, PBC, #80463	1.00
Admissions Specialist, PBB: #78215, #78702, #78703, #78716, #78826,	5.00
Admissions Specialist, PBA: #78825, #78105	2.00
Admin & Fiscal Support Sp, PBA, #78827	1.00

OFFICE OF THE REGISTRAR
Org Code: MARGEM

Registrar, PBC, #81614	1.00
Registrar, Assistant, PBB, #80658	1.00
Registrar, Assistant, PBA, #79064 (W)	1.00 (W)
Student Services Specialist, PBA: #78405, #78657,	2.00
Registrar, Assistant, PBA, #78828	1.00
Office Assistant IV, SR10: #00750, #14864, #15502, #21430, #40006 #14865(W)	5.00 1.00 (W)
Office Assistant III, SR8: #13494 (W), #26539 (W)	2.00 (W)
Scheduler, SR20, #05837	1.00
Office Assistant, IV, SR10, #13959	1.00

STATE OF HAWAI'I
UNIVERSITY OF HAWAI'I
UNIVERSITY OF HAWAI'I AT MĀNOA
OFFICE OF THE VICE CHANCELLOR
FOR STUDENTS
ENROLLMENT MANAGEMENT

ORGANIZATIONAL CHART
CHART IV-H

GENERAL FUND FTE	81.00***
REVOLVING FUND FTE (W)	4.00

* New position approved in 2/17/05 reorg; position
number to be determined.

** Assistant Vice Chancellor position #89133 position
count reflected on chart IV.

***Abolished position numbers 15265, 17600, and 22321
(General Funds 3.00)

FINANCIAL AID SERVICES
Org Code: MAFAEM

Financial Aid Manager, PBC, #77250	1.00
Financial Aid Specialist, PBB, #81913	1.00
Financial Aid Specialist, PBB: #77044, #78226, #78227, #80717, #80922 #81151, #81607	7.00
Financial Aid Specialist, PBA: #78224, #78225, #78245, #78760, #78761, #78951, #80052, #81606, #81608, #81609	10.00