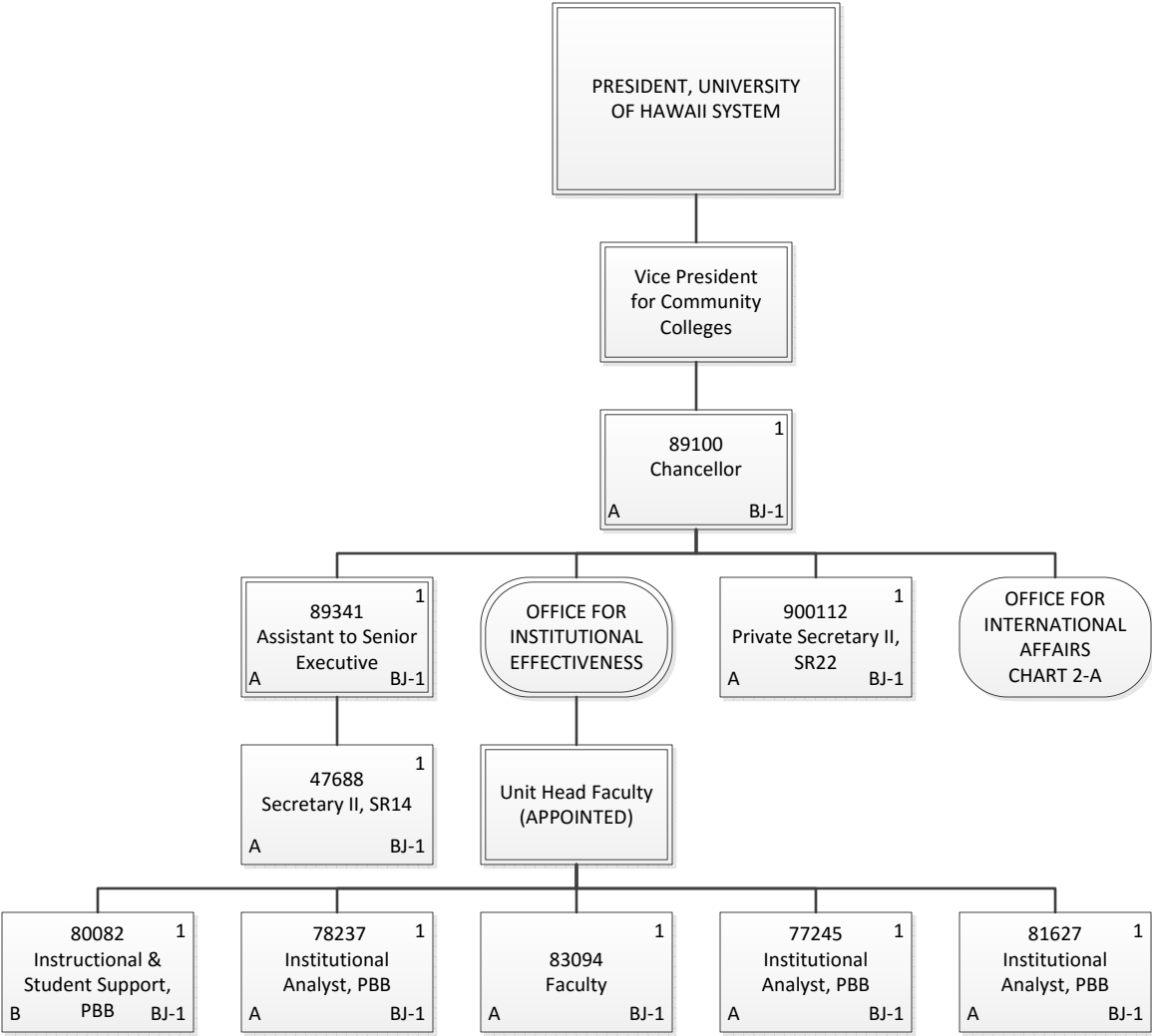


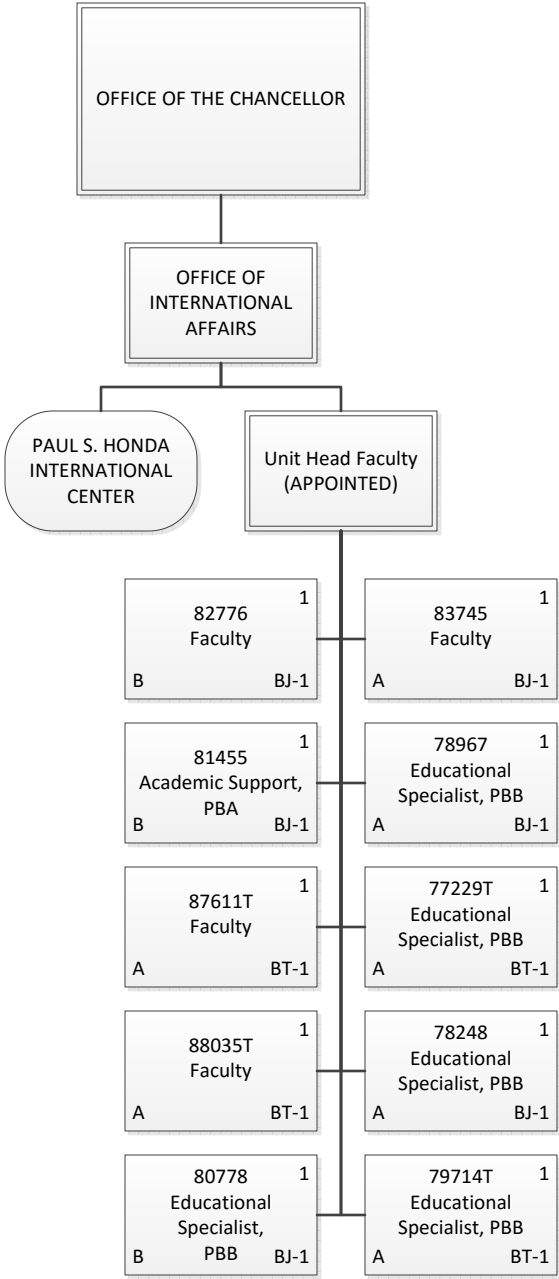
Organization Chart

Chart 1

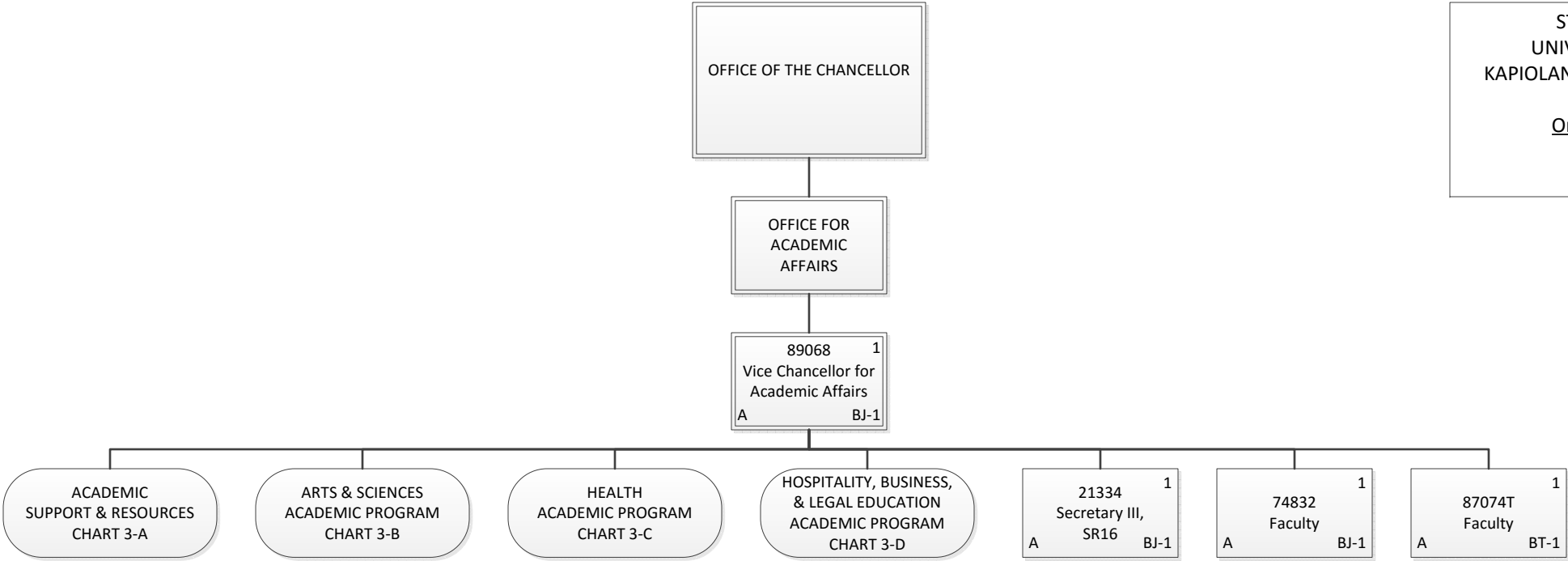
Permanent	410.00
General Funds	393.00
Special Funds	17.00
Temporary	29.00
General Funds	29.00
Grand Total	439.00



Permanent	9.00
General Funds	8.00
Special Funds	1.00
Grand Total	9.00



Permanent	6.00
General Funds	3.00
Special Funds	3.00
Temporary	4.00
General Funds	4.00
Grand Total	10.00



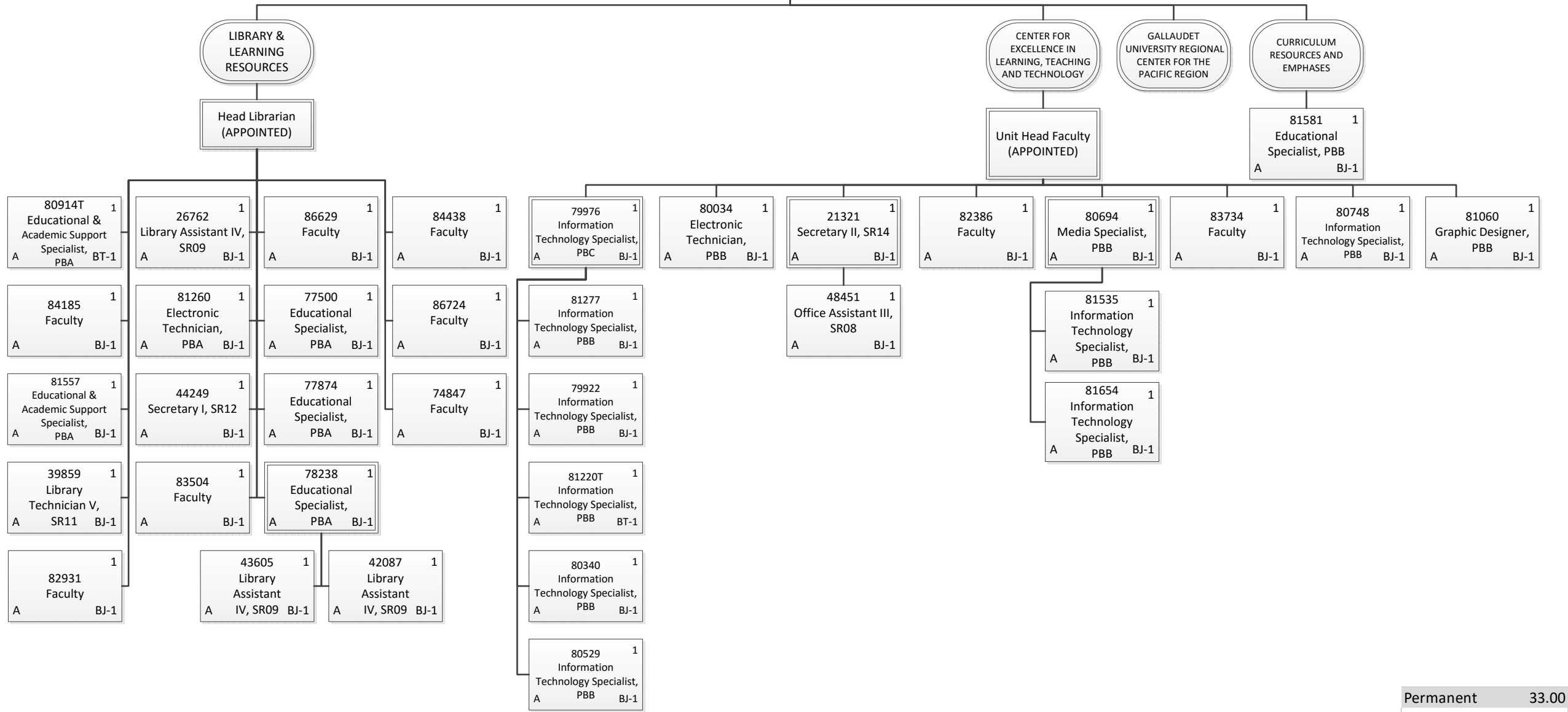
Permanent	3.00
General Funds	3.00
Temporary	1.00
General Funds	1.00
Grand Total	4.00

OFFICE FOR ACADEMIC
AFFAIRS

STATE OF HAWAII
UNIVERSITY OF HAWAII
KAPIOLANI COMMUNITY COLLEGE

Organization Chart

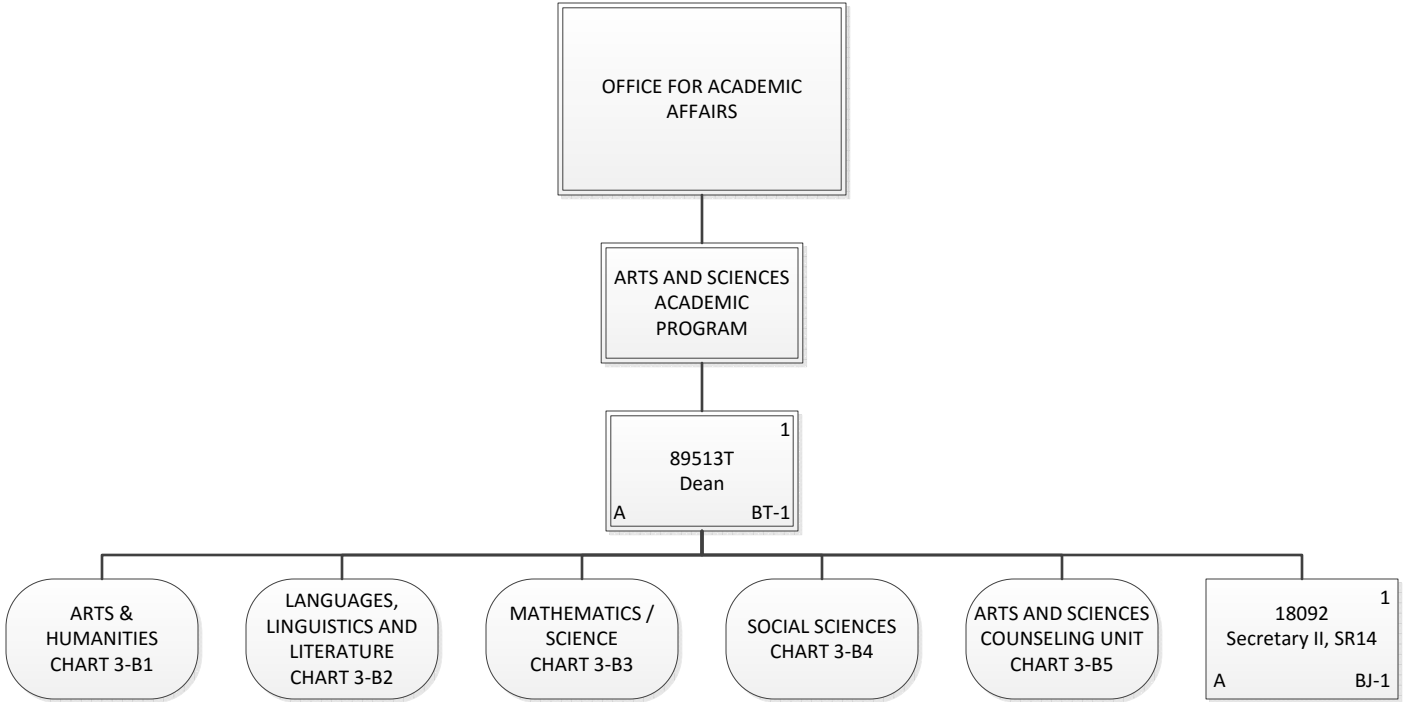
Chart 3-A



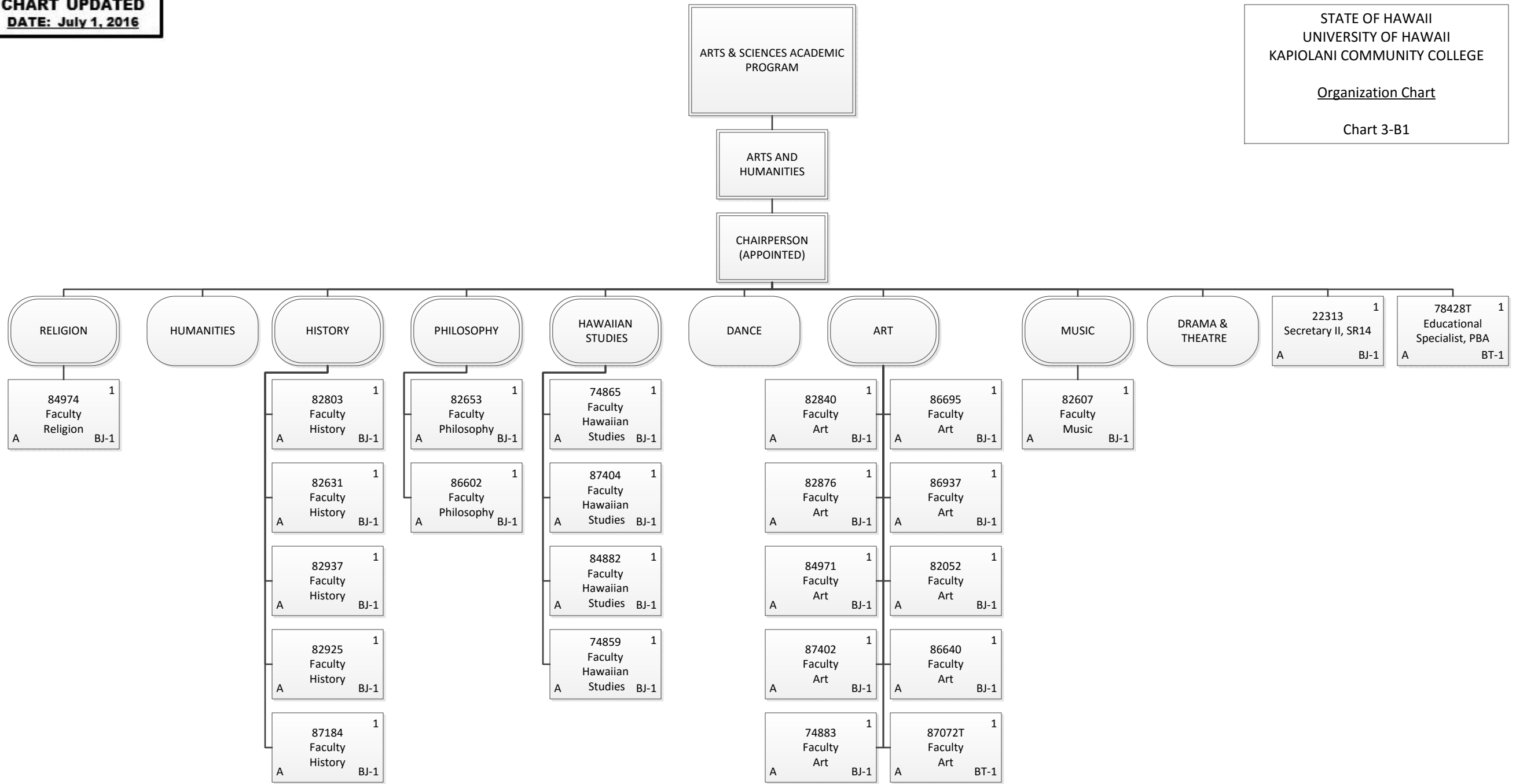
Permanent	33.00
General Funds	33.00
Temporary	2.00
General Funds	2.00
Grand Total	35.00

Organization Chart

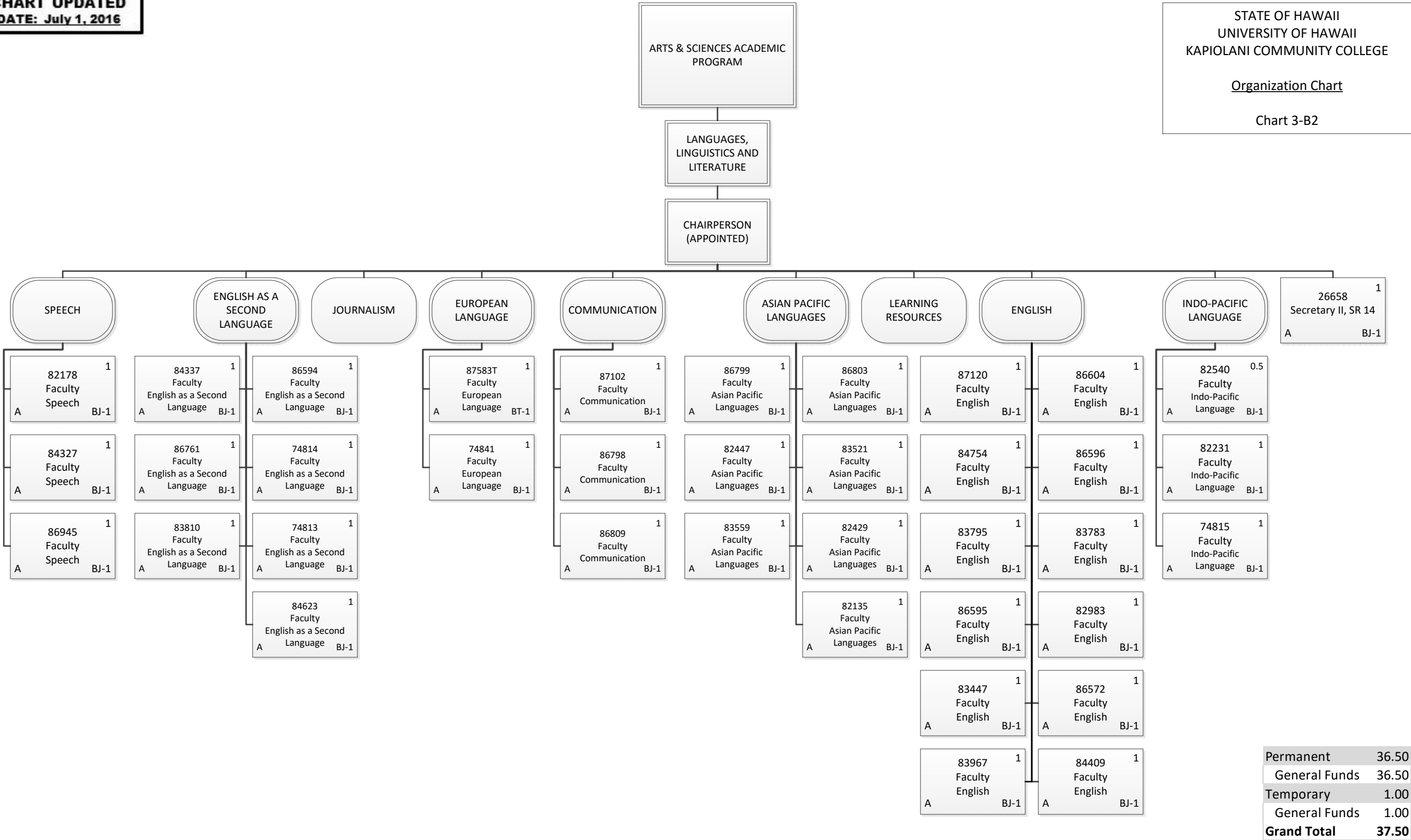
Chart 3-B



Permanent	1.00
General Funds	1.00
Temporary	1.00
General Funds	1.00
Grand Total	2.00

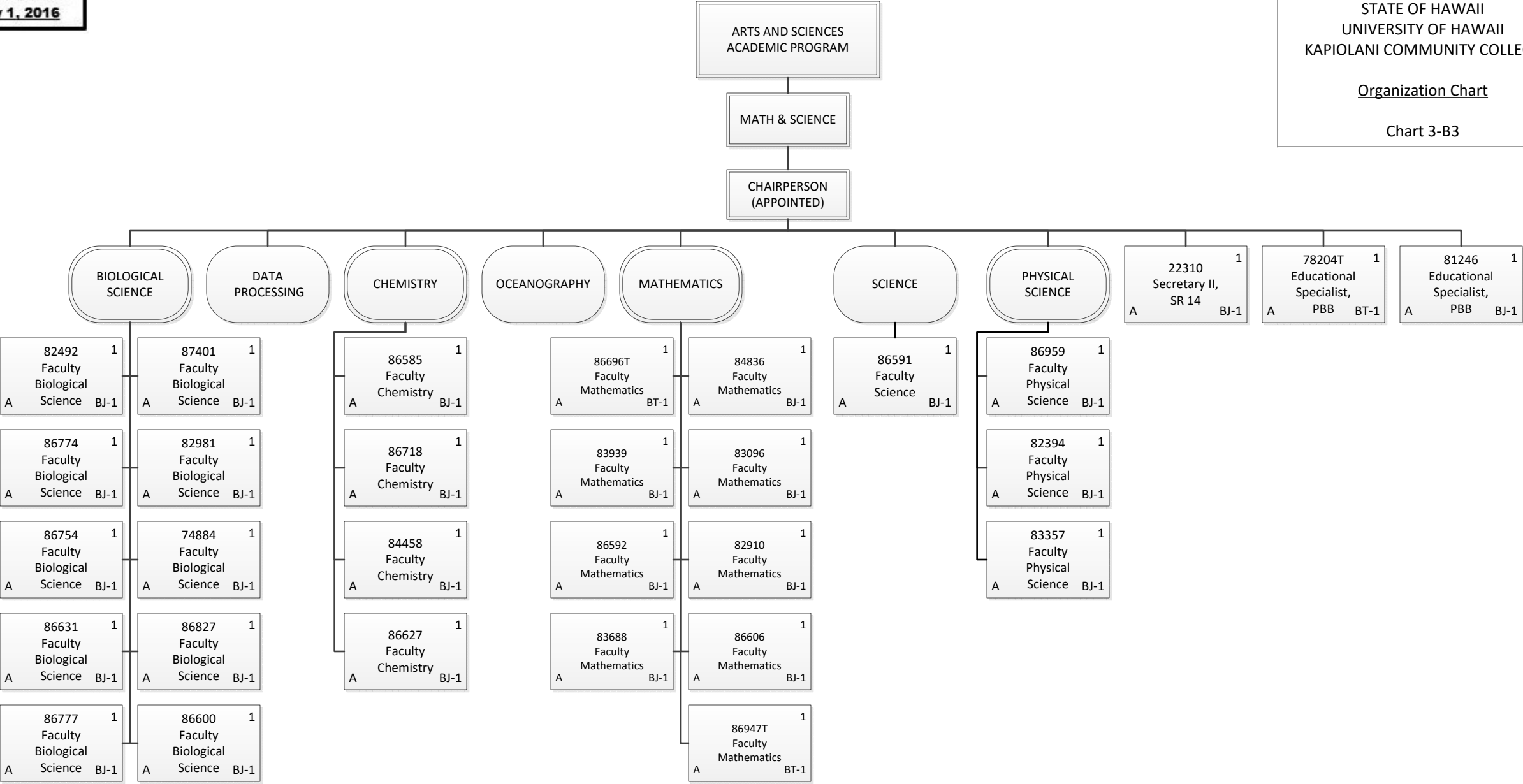


Permanent	23.00
General Funds	23.00
Temporary	2.00
General Funds	2.00
Grand Total	25.00

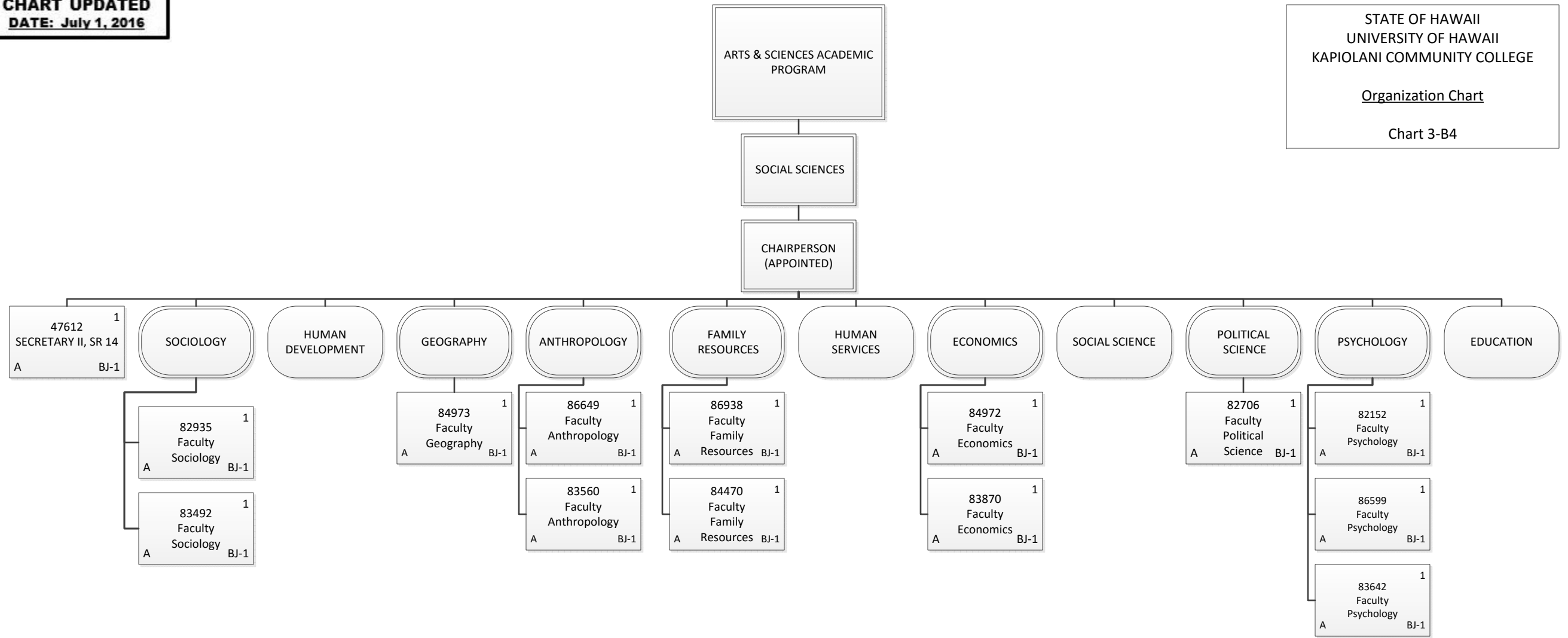


Organization Chart

Chart 3-B3



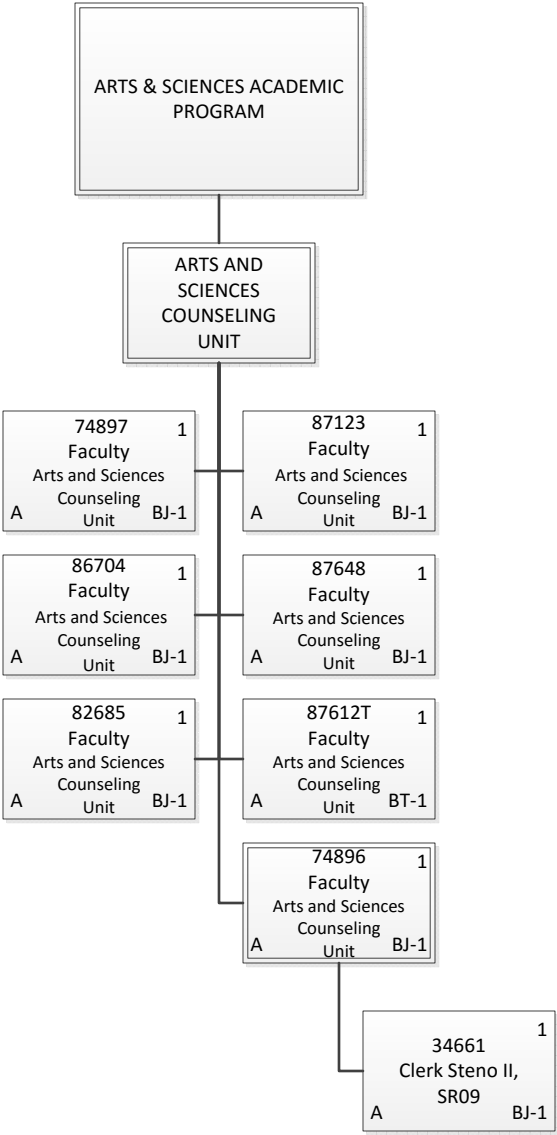
Permanent	27.00
General Funds	27.00
Temporary	3.00
General Funds	3.00
Grand Total	30.00



Permanent	14.00
General Funds	14.00
Grand Total	14.00

Organization Chart

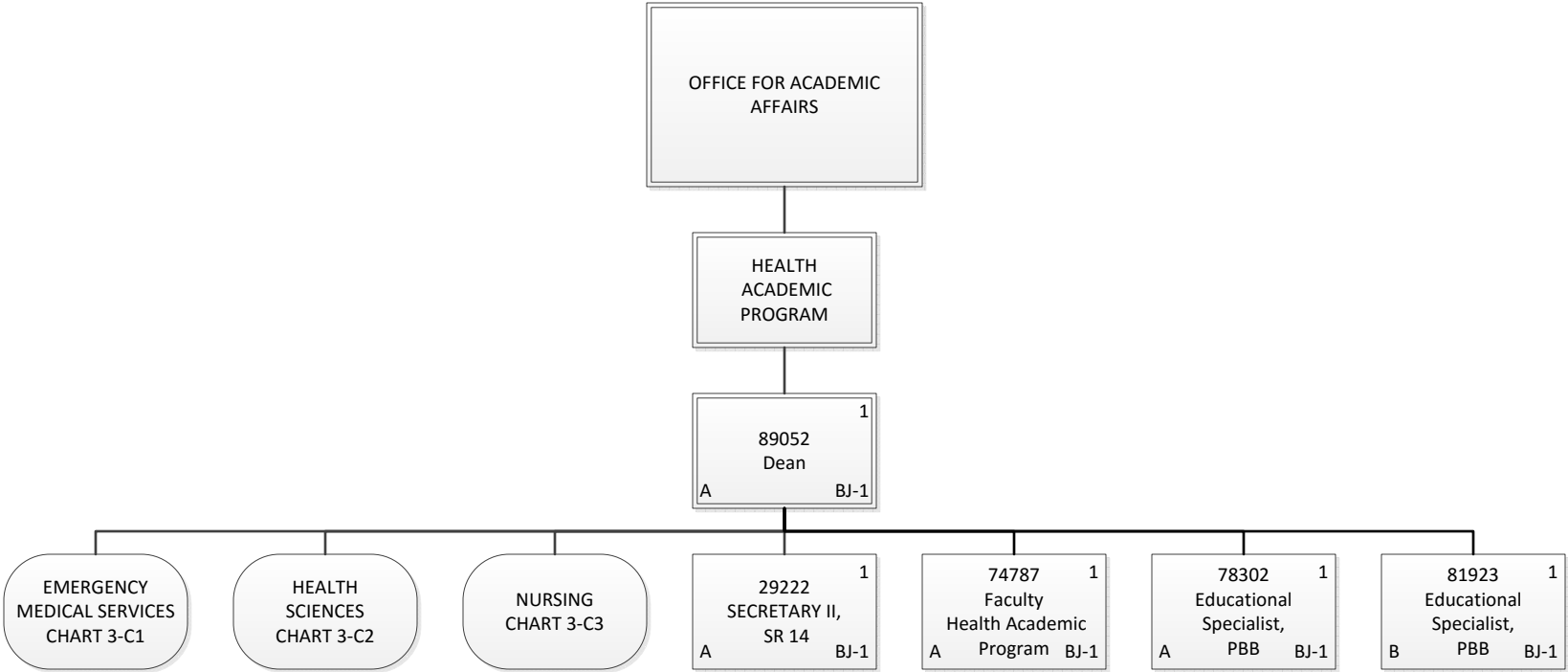
Chart 3-B5



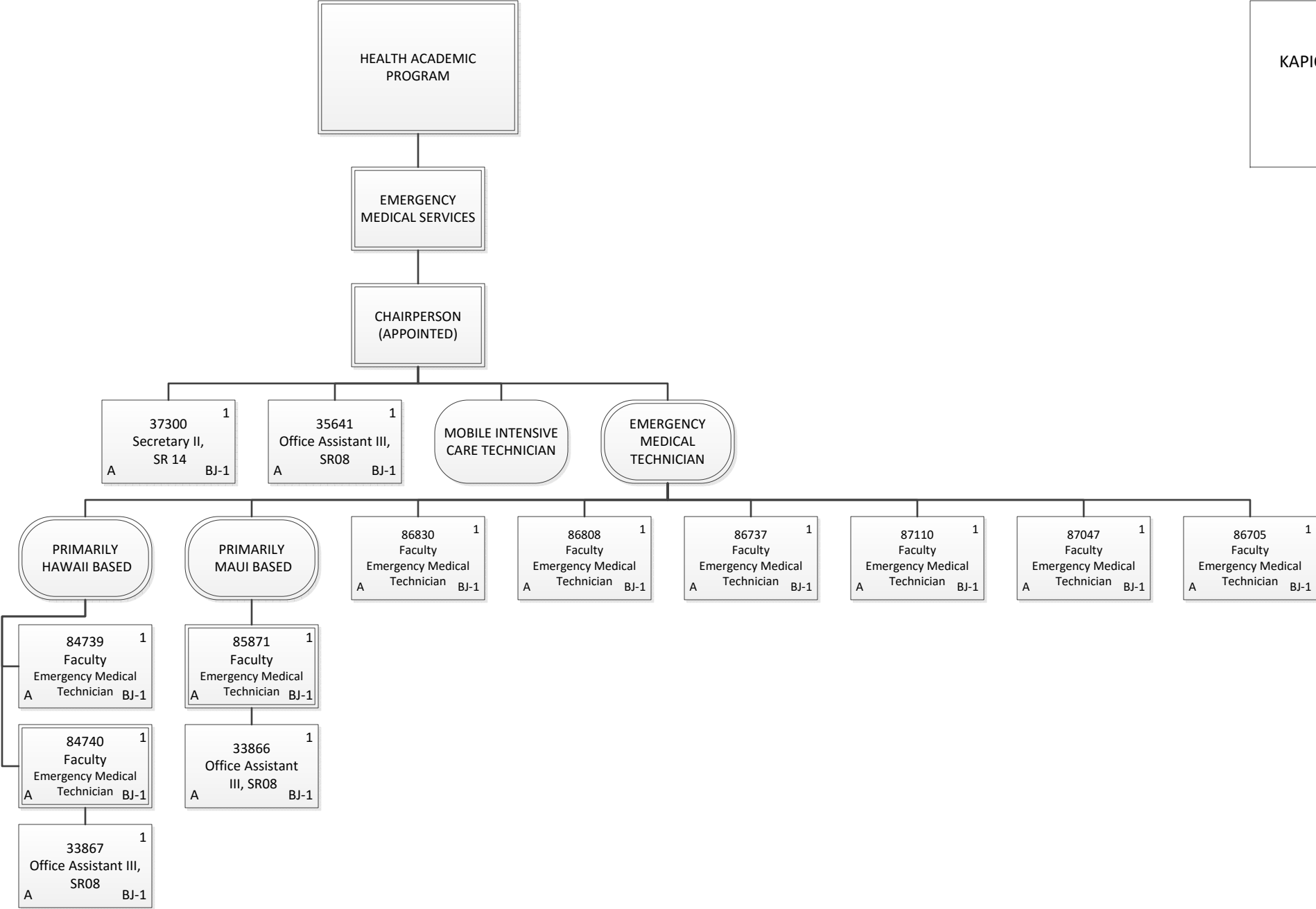
Permanent	7.00
General Funds	7.00
Temporary	1.00
General Funds	1.00
Grand Total	8.00

Organization Chart

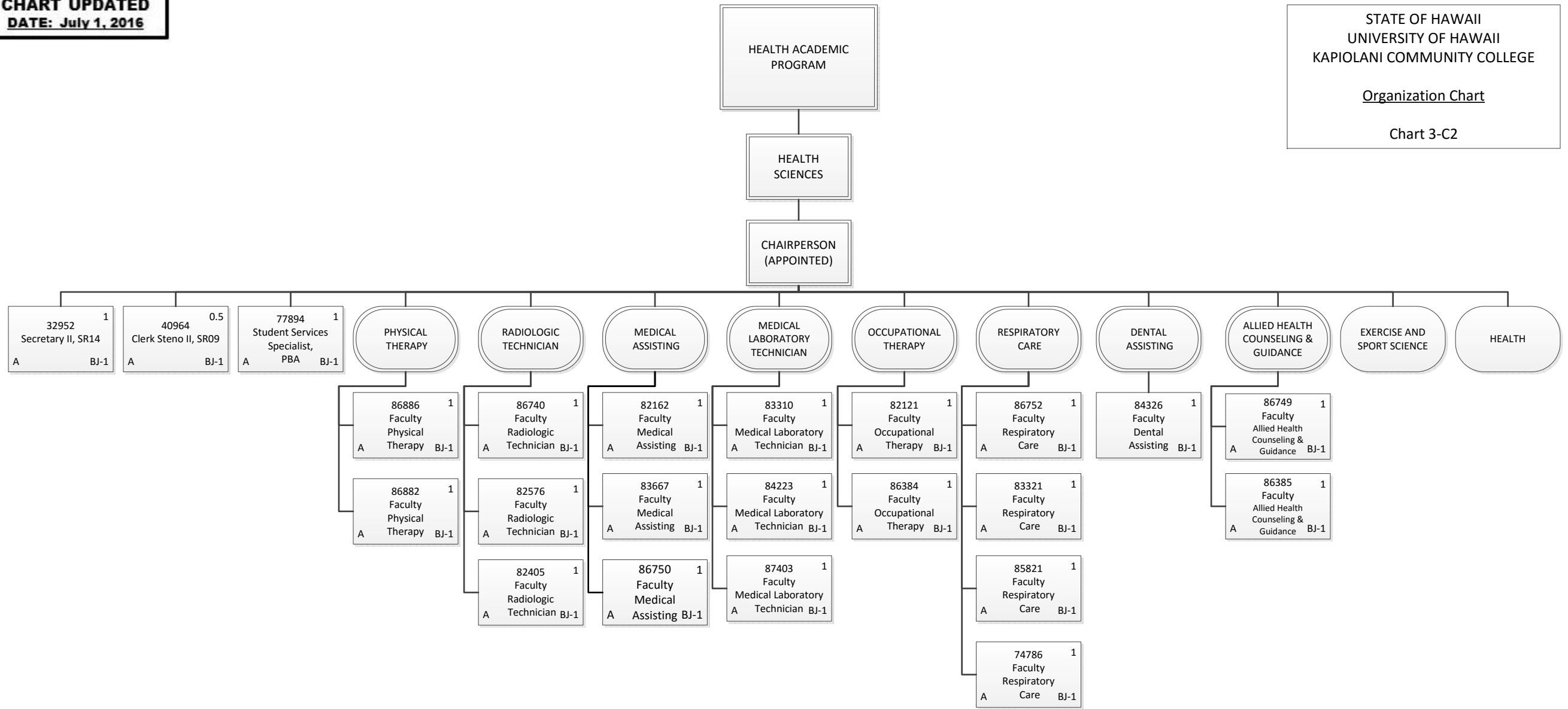
Chart 3-C



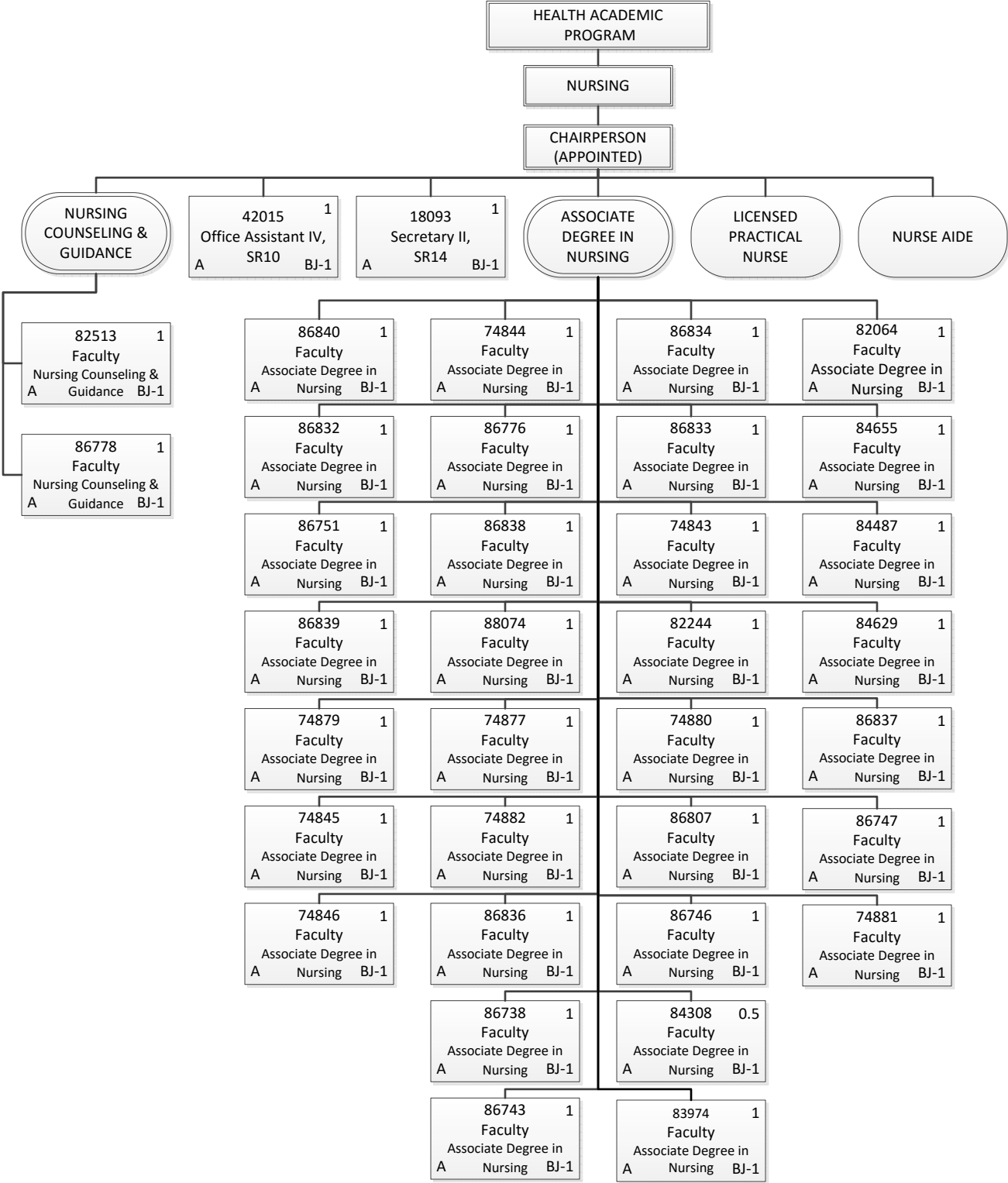
Permanent	5.00
General Funds	4.00
Special Funds	1.00
Grand Total	5.00



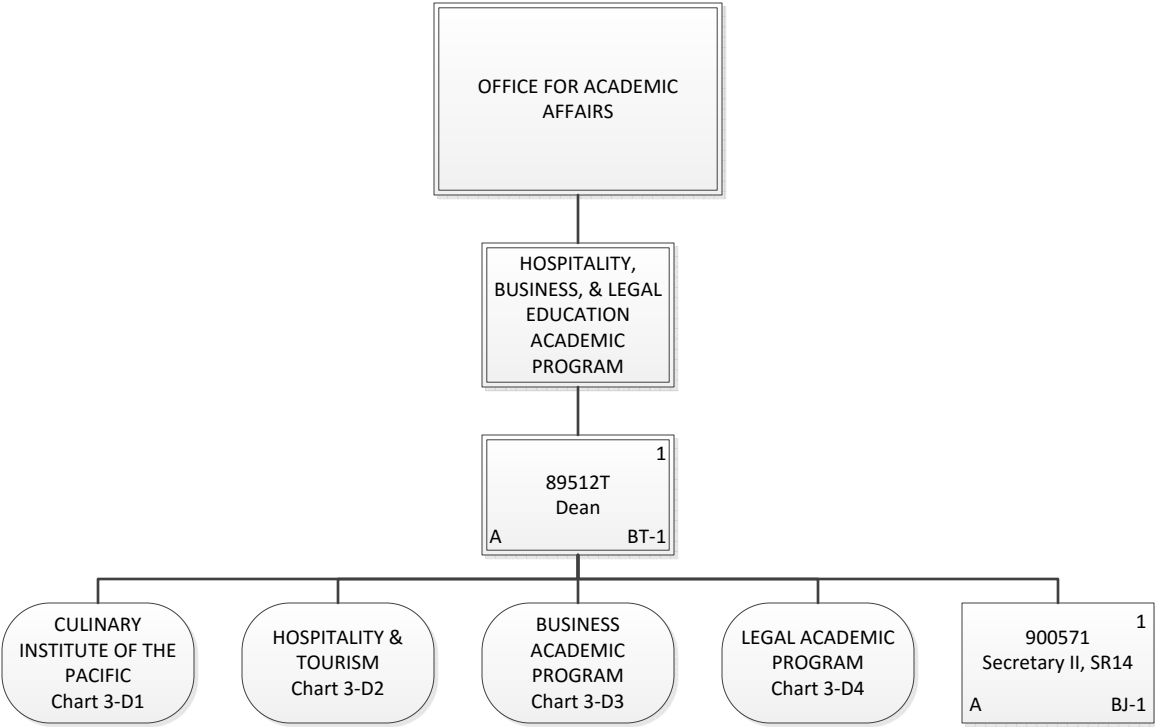
Permanent	13.00
General Funds	13.00
Grand Total	13.00



Permanent	22.50
General Funds	22.50
Grand Total	22.50



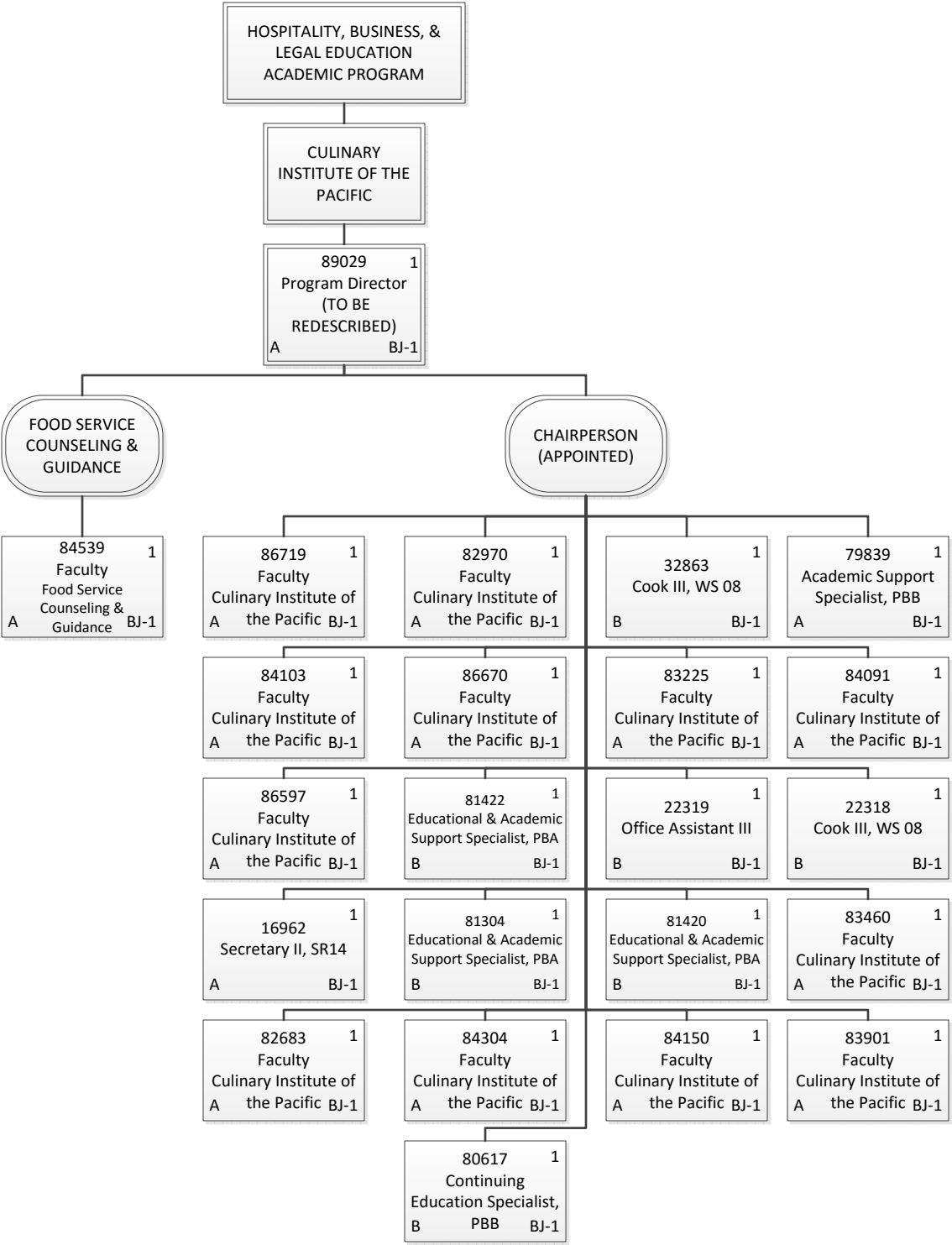
Permanent	35.50
General Funds	35.50
Grand Total	35.50



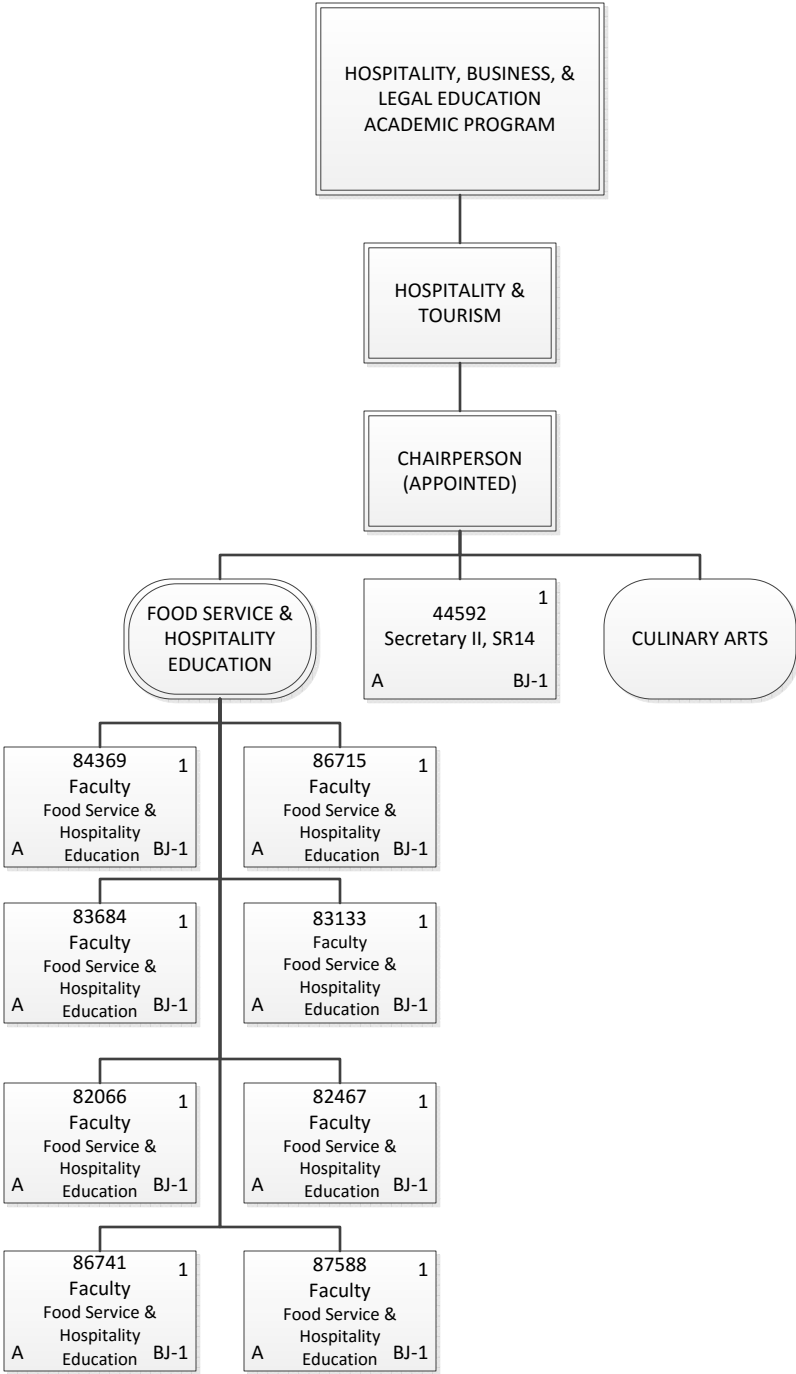
Organization Chart

Chart 3-D

Permanent	1.00
General Funds	1.00
Temporary	1.00
General Funds	1.00
Grand Total	2.00



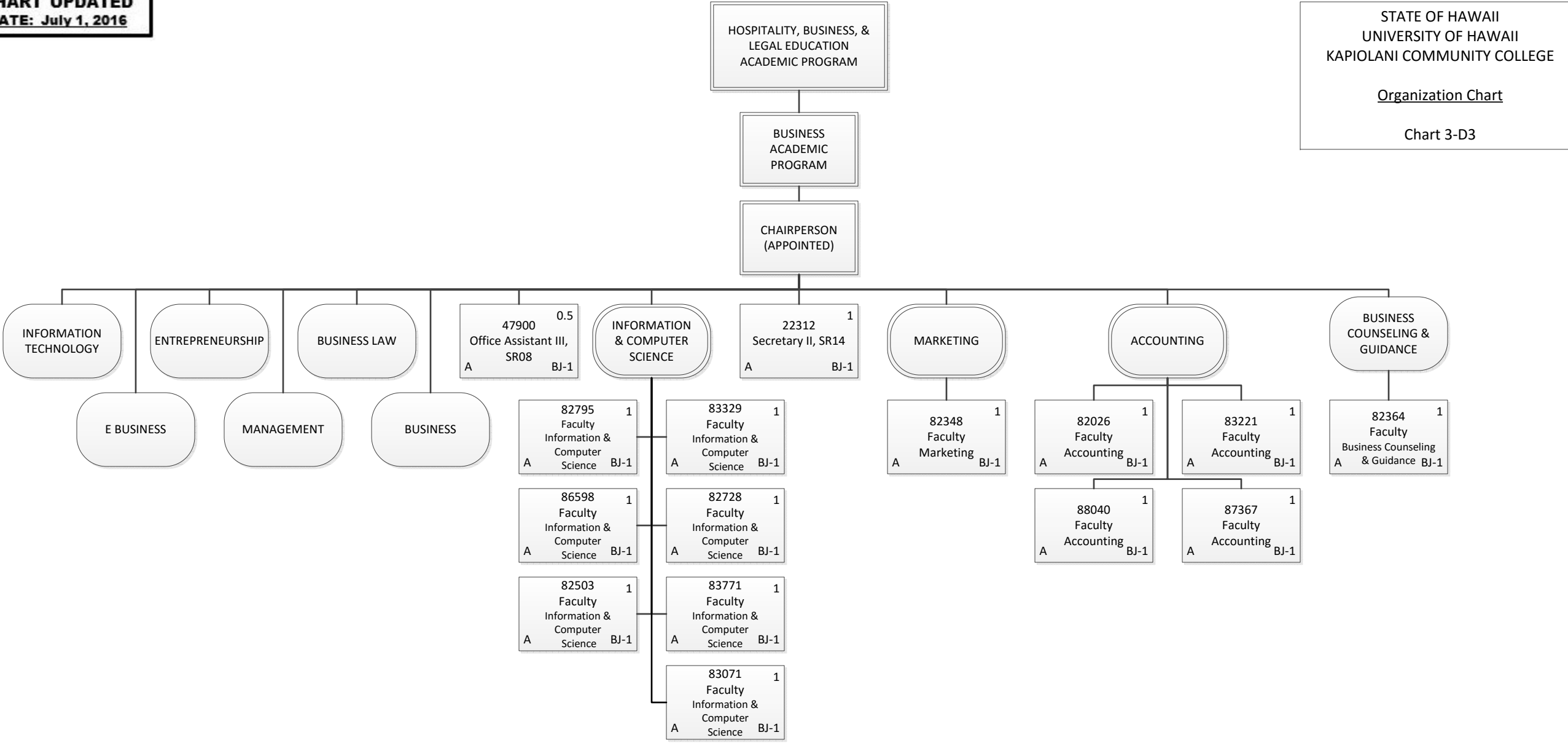
Permanent	23.00
General Funds	16.00
Special Funds	7.00
Grand Total	23.00



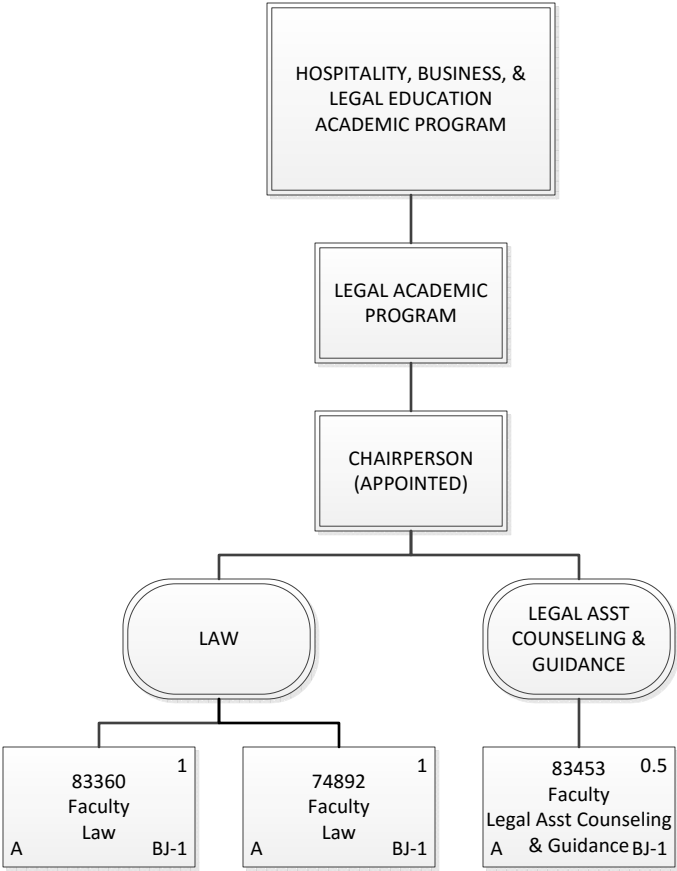
Organization Chart

Chart 3-D2

Permanent	9.00
General Funds	9.00
Grand Total	9.00



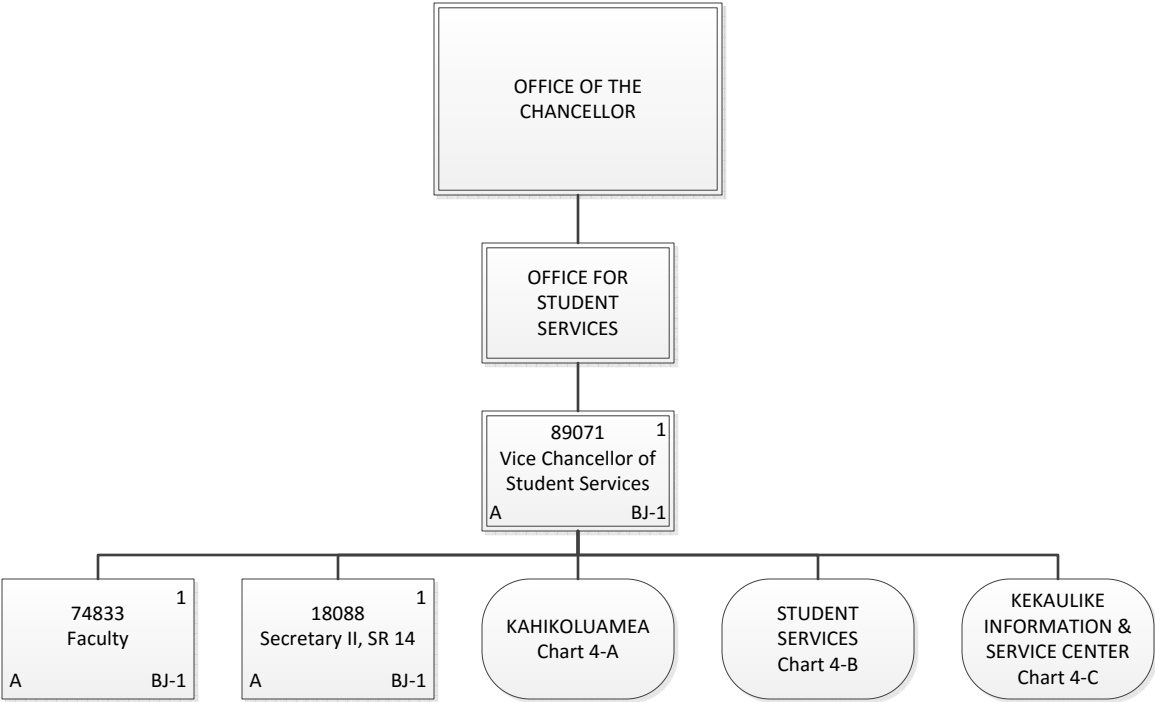
Permanent	14.50
General Funds	14.50
Grand Total	14.50



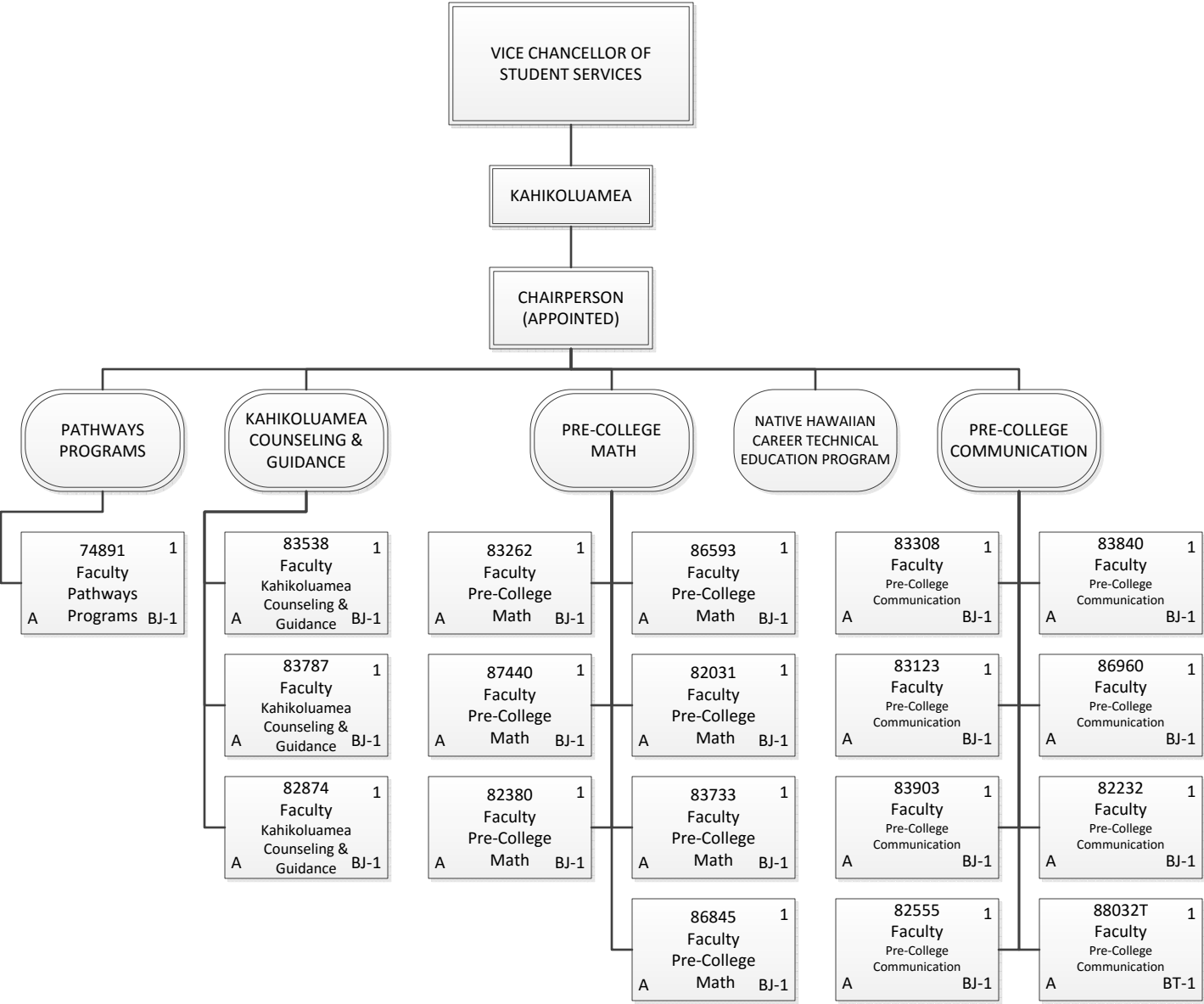
Organization Chart

Chart 3-D4

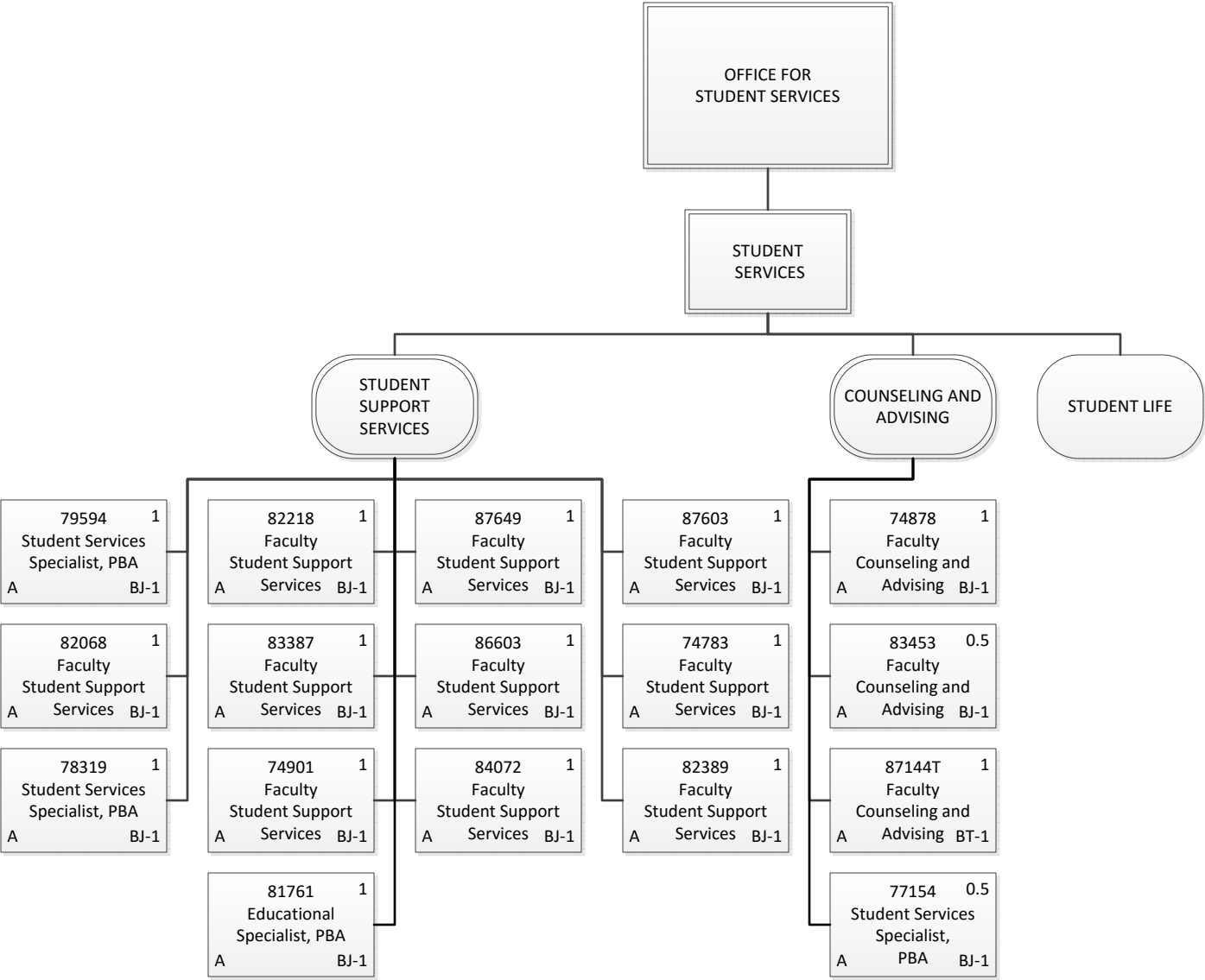
Permanent	2.50
General Funds	2.50
Grand Total	2.50



Permanent	3.00
General Funds	3.00
Grand Total	3.00



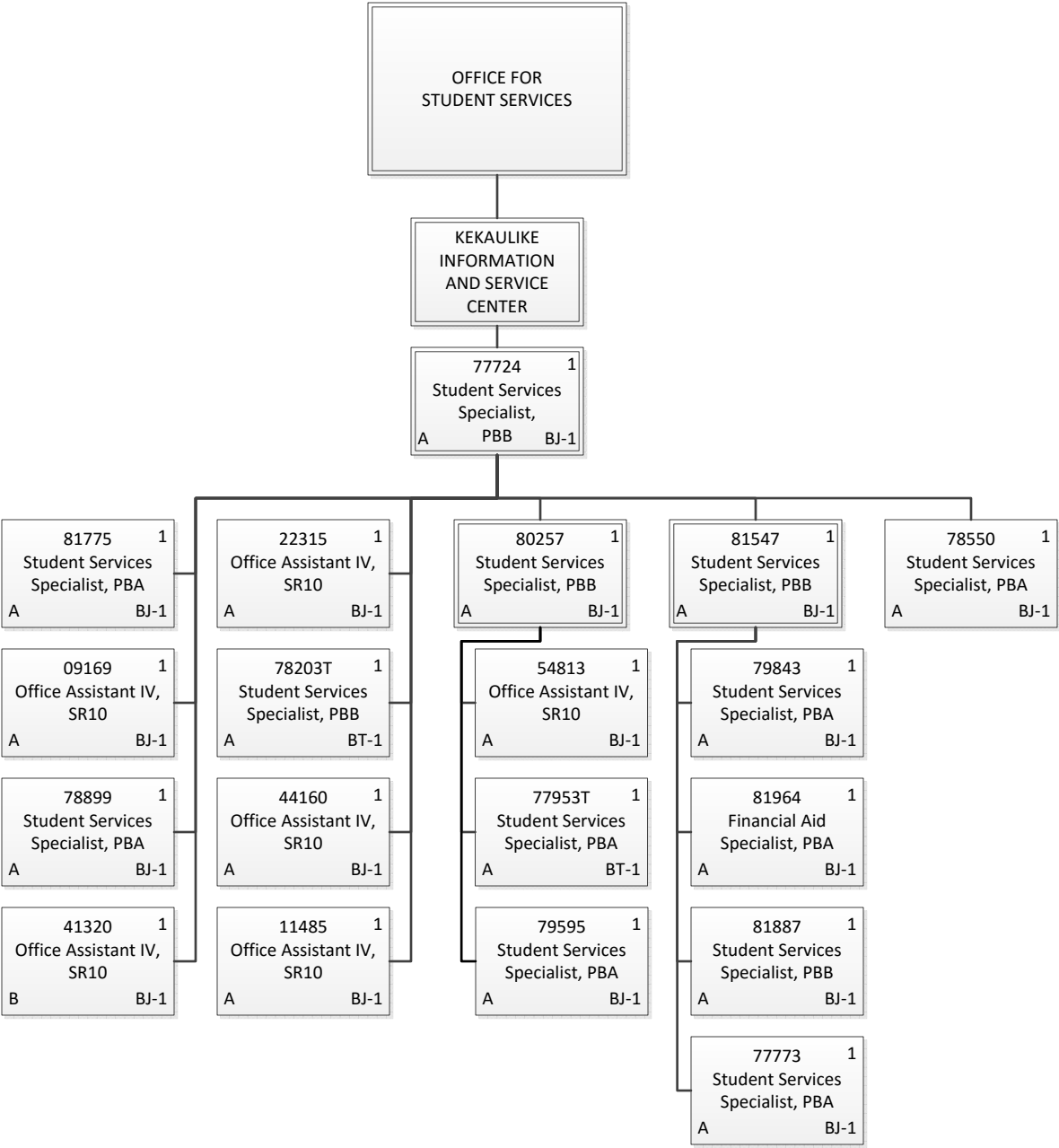
Permanent	18.00
General Funds	18.00
Temporary	1.00
General Funds	1.00
Grand Total	19.00



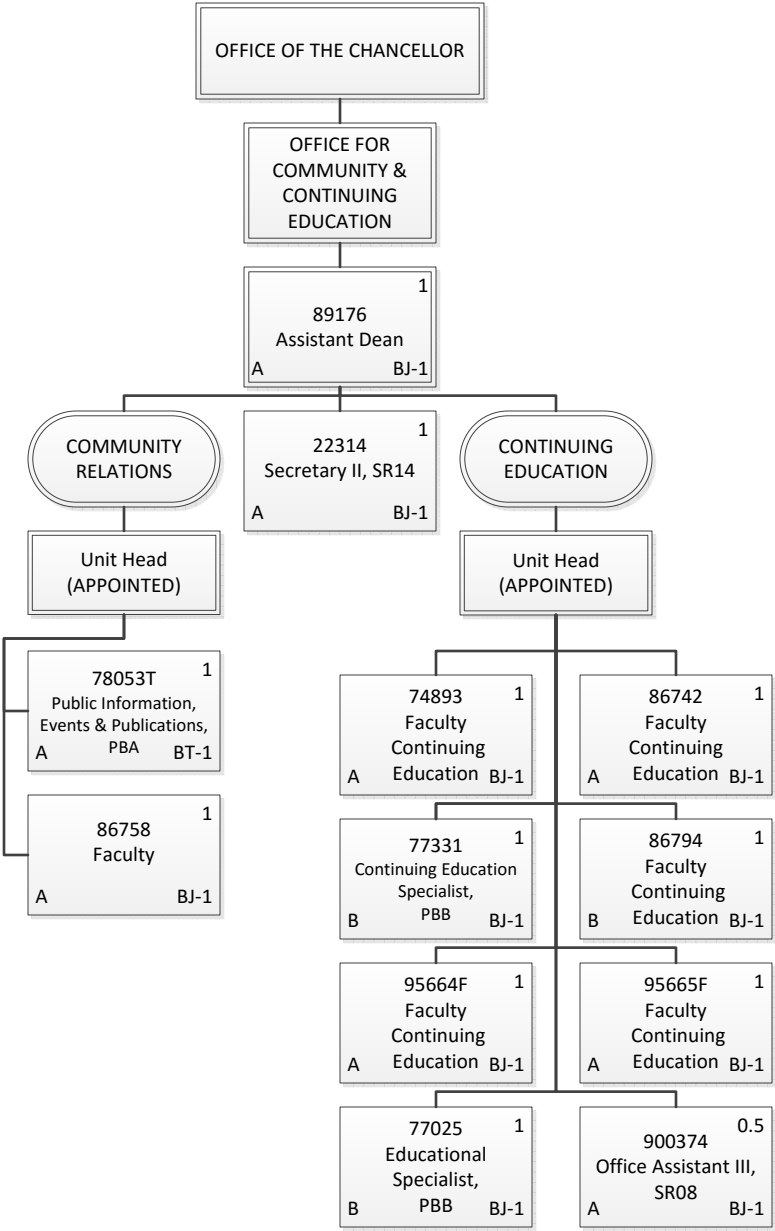
Permanent	15.00
General Funds	15.00
Temporary	1.00
General Funds	1.00
Grand Total	16.00

Organization Chart

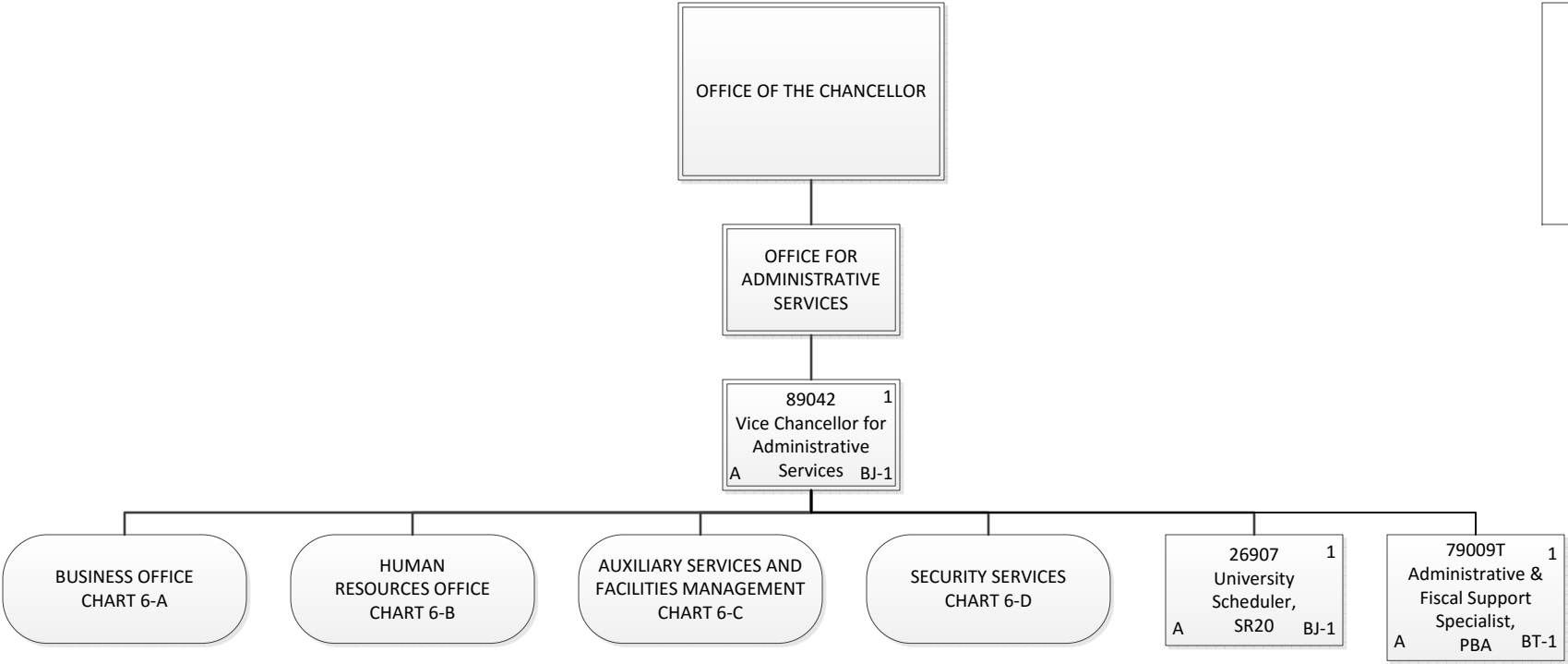
Chart 4-C



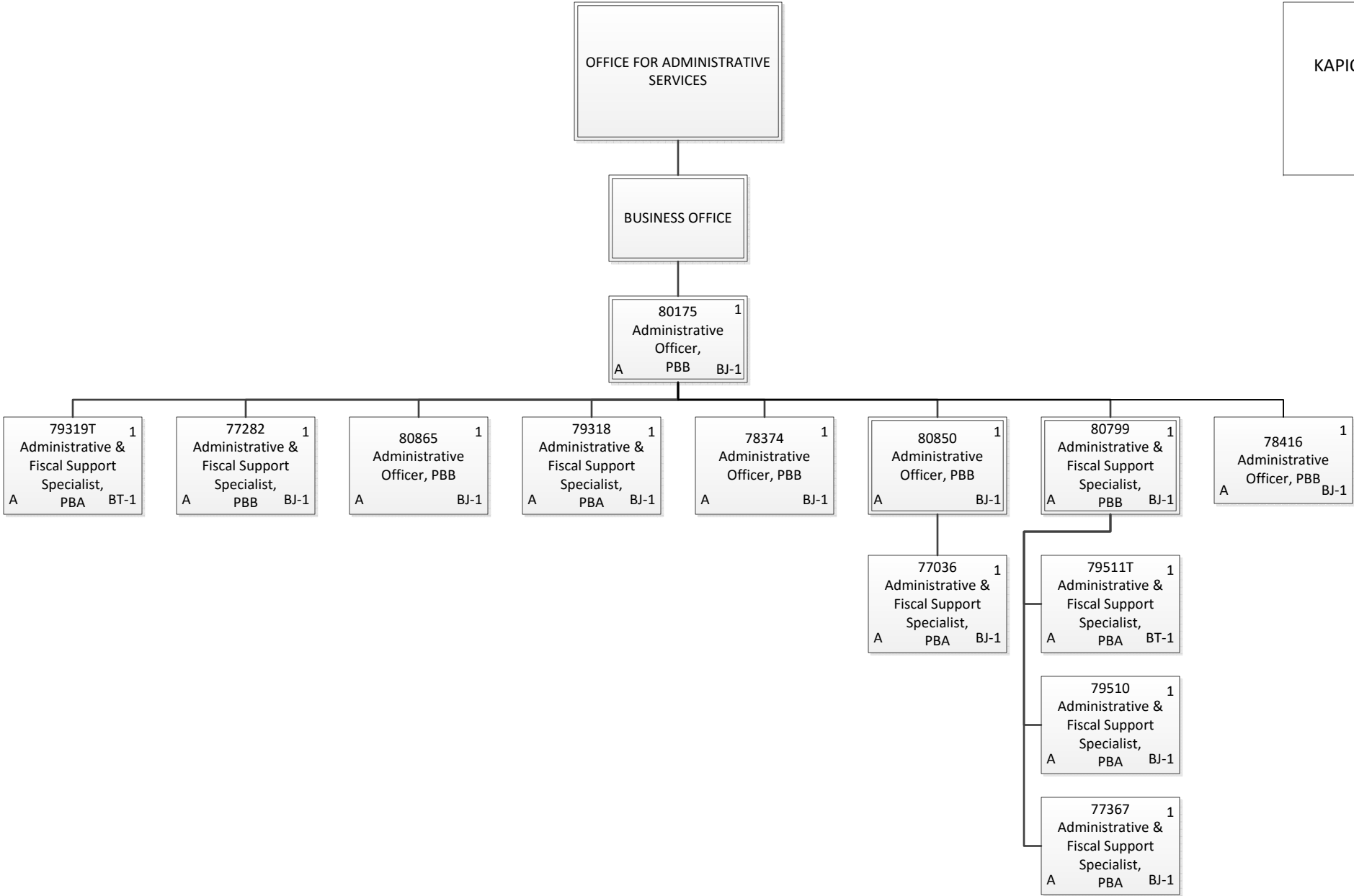
Permanent	17.00
General Funds	16.00
Special Funds	1.00
Temporary	2.00
General Funds	2.00
Grand Total	19.00



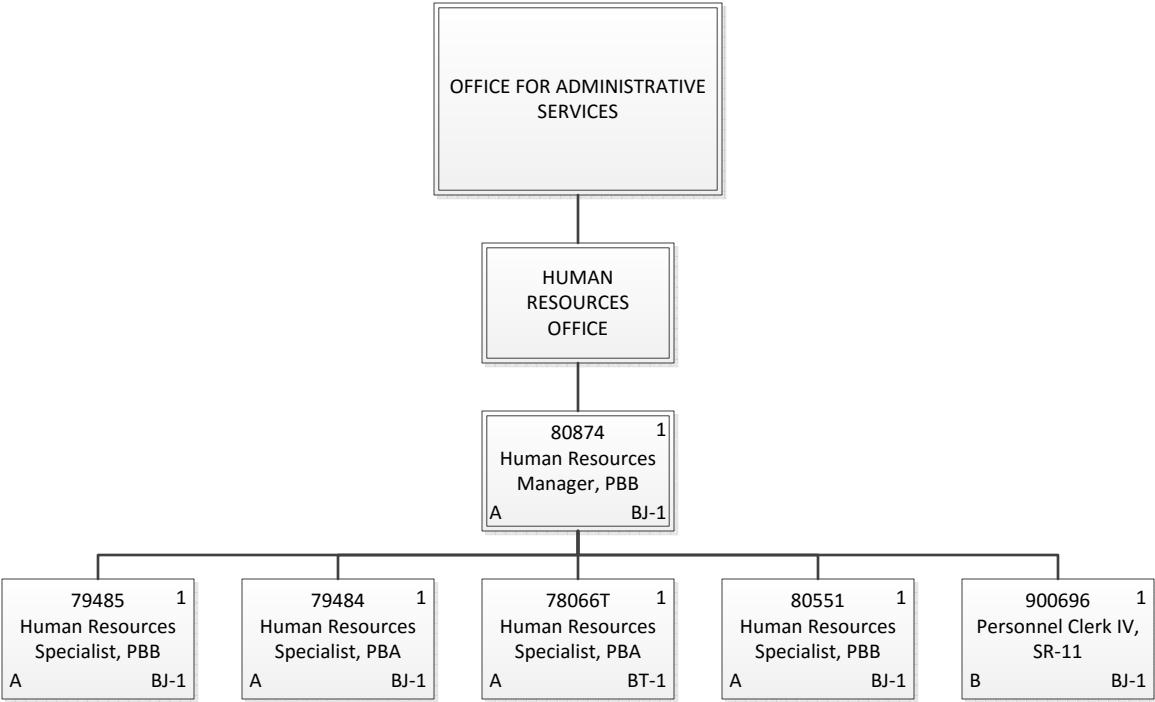
Permanent	10.50
General Funds	7.50
Special Funds	3.00
Temporary	1.00
General Funds	1.00
Grand Total	11.50



Permanent	2.00
General Funds	2.00
Temporary	1.00
General Funds	1.00
Grand Total	3.00



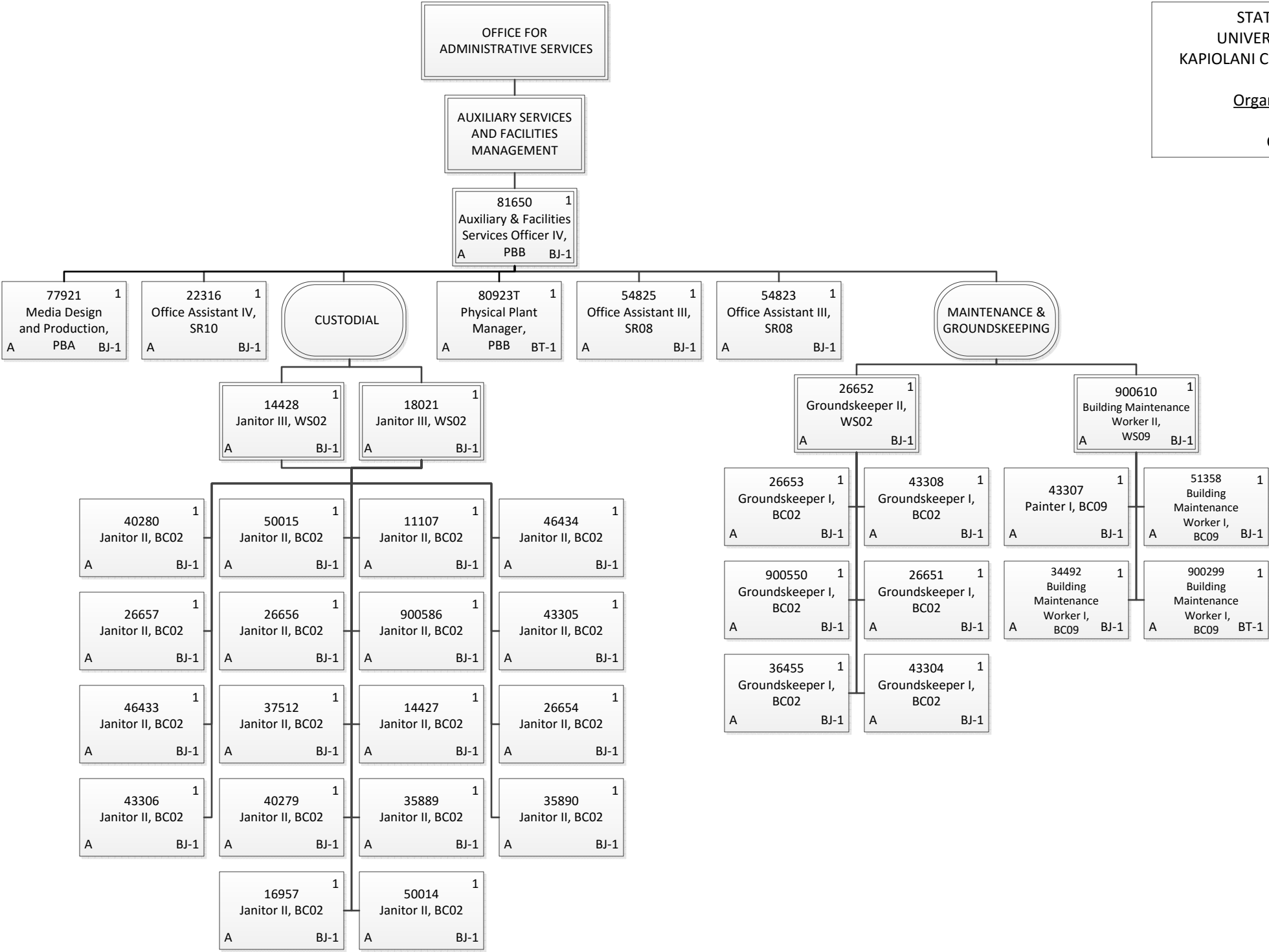
Permanent	11.00
General Funds	11.00
Temporary	2.00
General Funds	2.00
Grand Total	13.00



Permanent	5.00
General Funds	4.00
Special Funds	1.00
Temporary	1.00
General Funds	1.00
Grand Total	6.00

Organization Chart

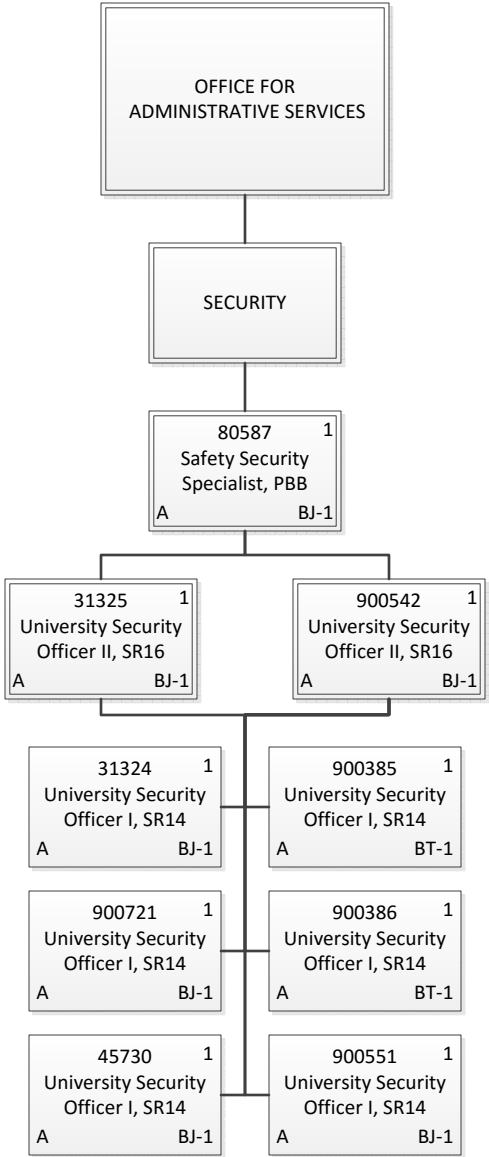
Chart 6-C



Permanent	36.00
General Funds	36.00
Temporary	2.00
General Funds	2.00
Grand Total	38.00

Organization Chart

Chart 6-D



Permanent	7.00
General Funds	7.00
Temporary	2.00
General Funds	2.00
Grand Total	9.00