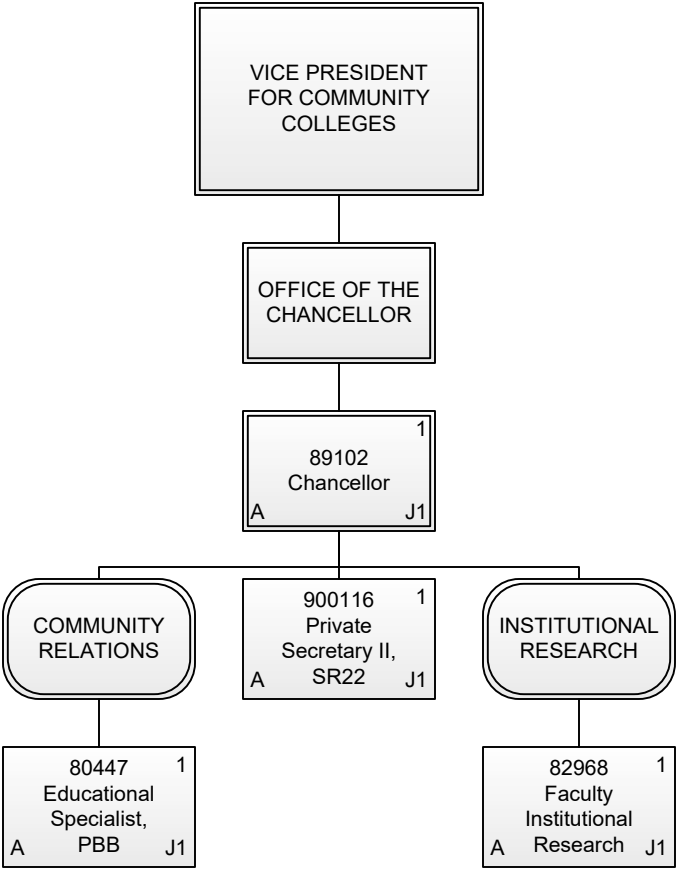
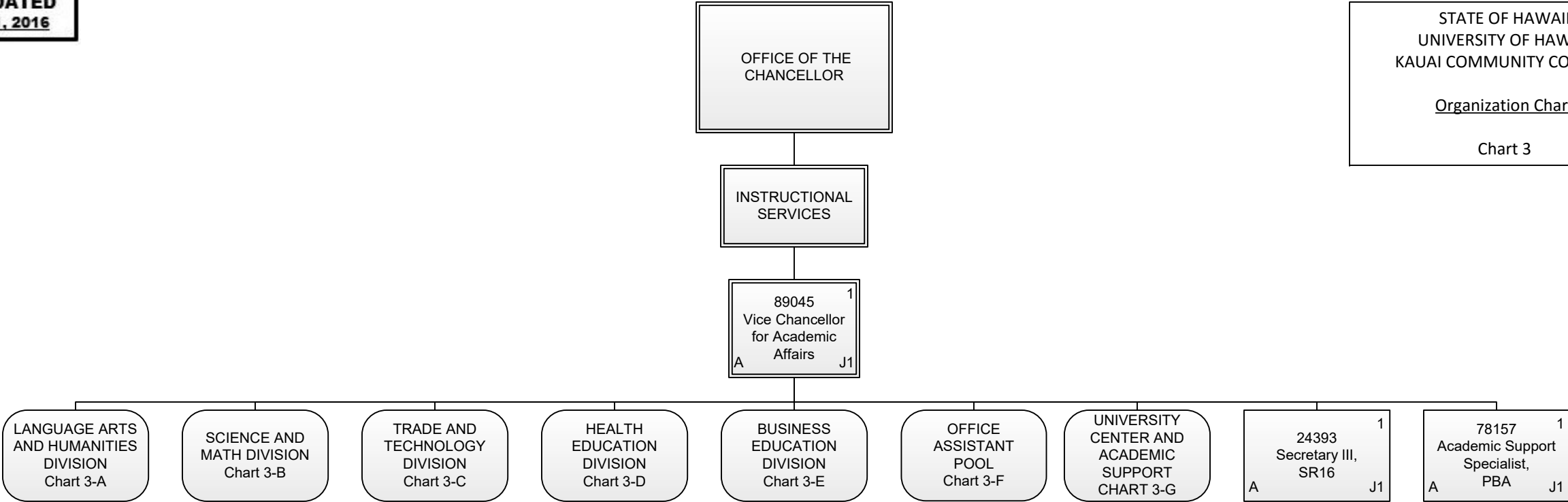


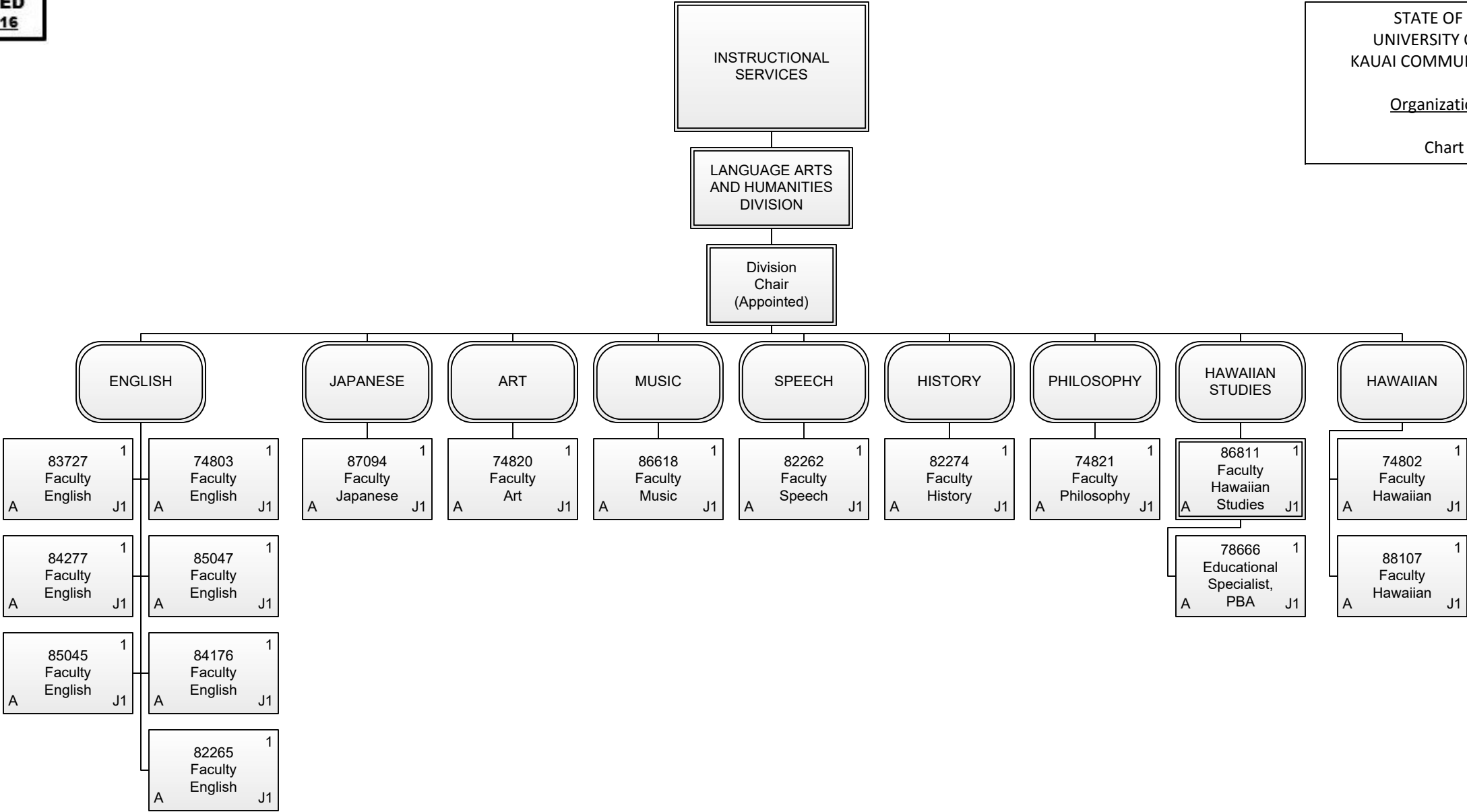
Permanent	170.00
General Fund	169.00
Special Fund	1.00
Temporary	1.00
General Fund	1.00
Grand Total	171.00



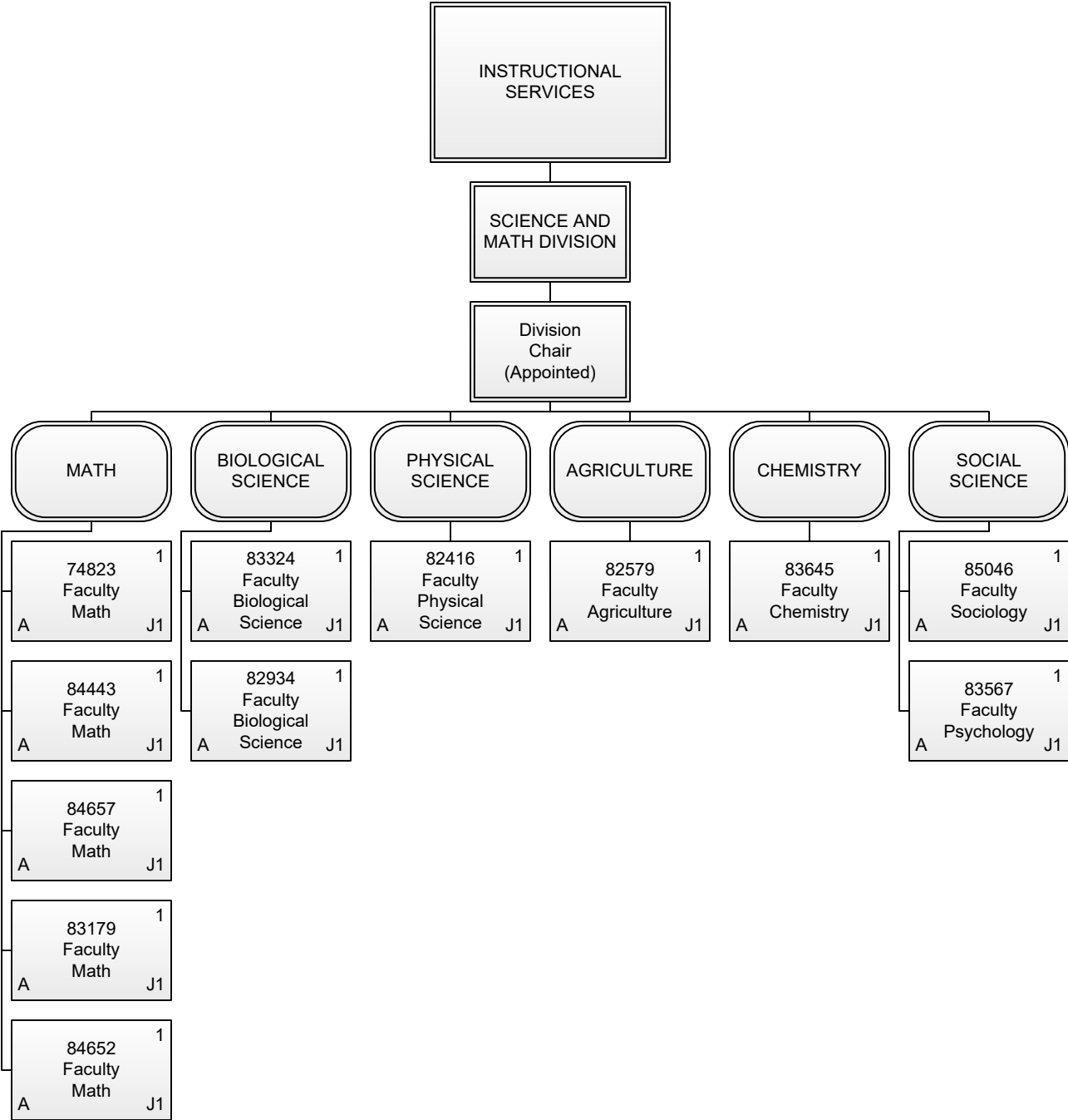
Permanent	4.00
General Fund	4.00
Grand Total	4.00



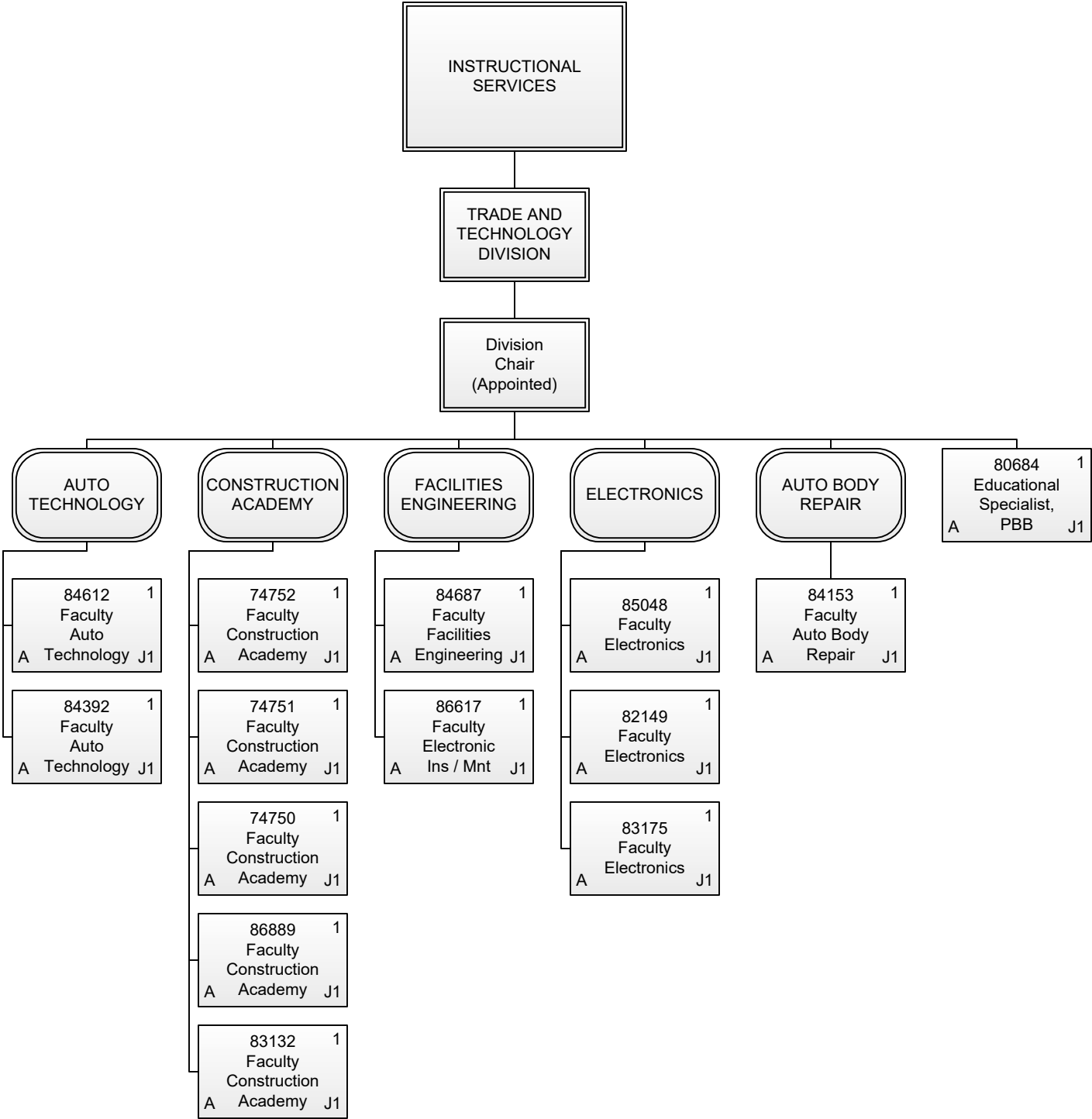
Permanent	3.00
General Fund	3.00
Grand Total	3.00



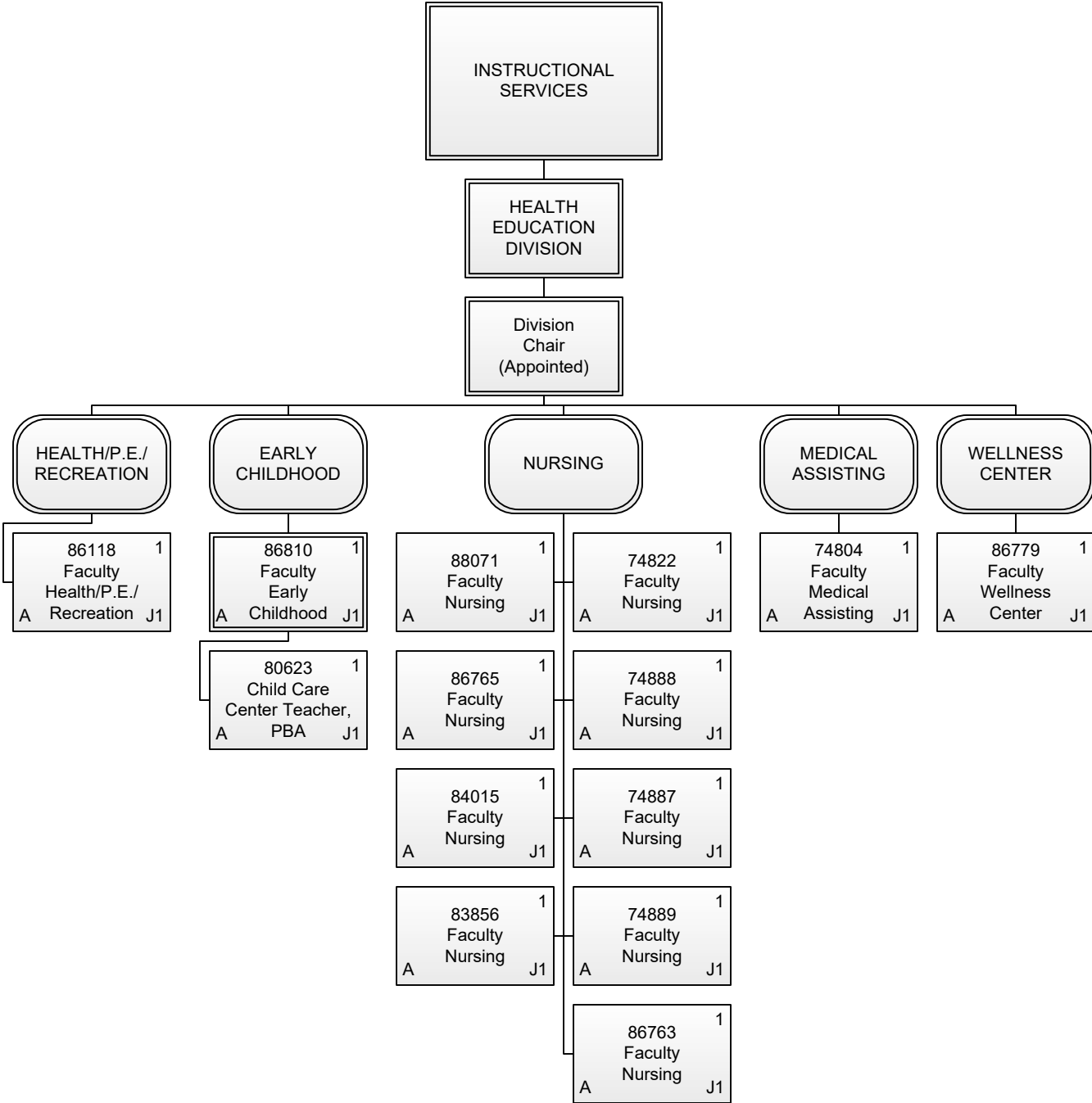
Permanent	17.00
General Fund	17.00
Grand Total	17.00



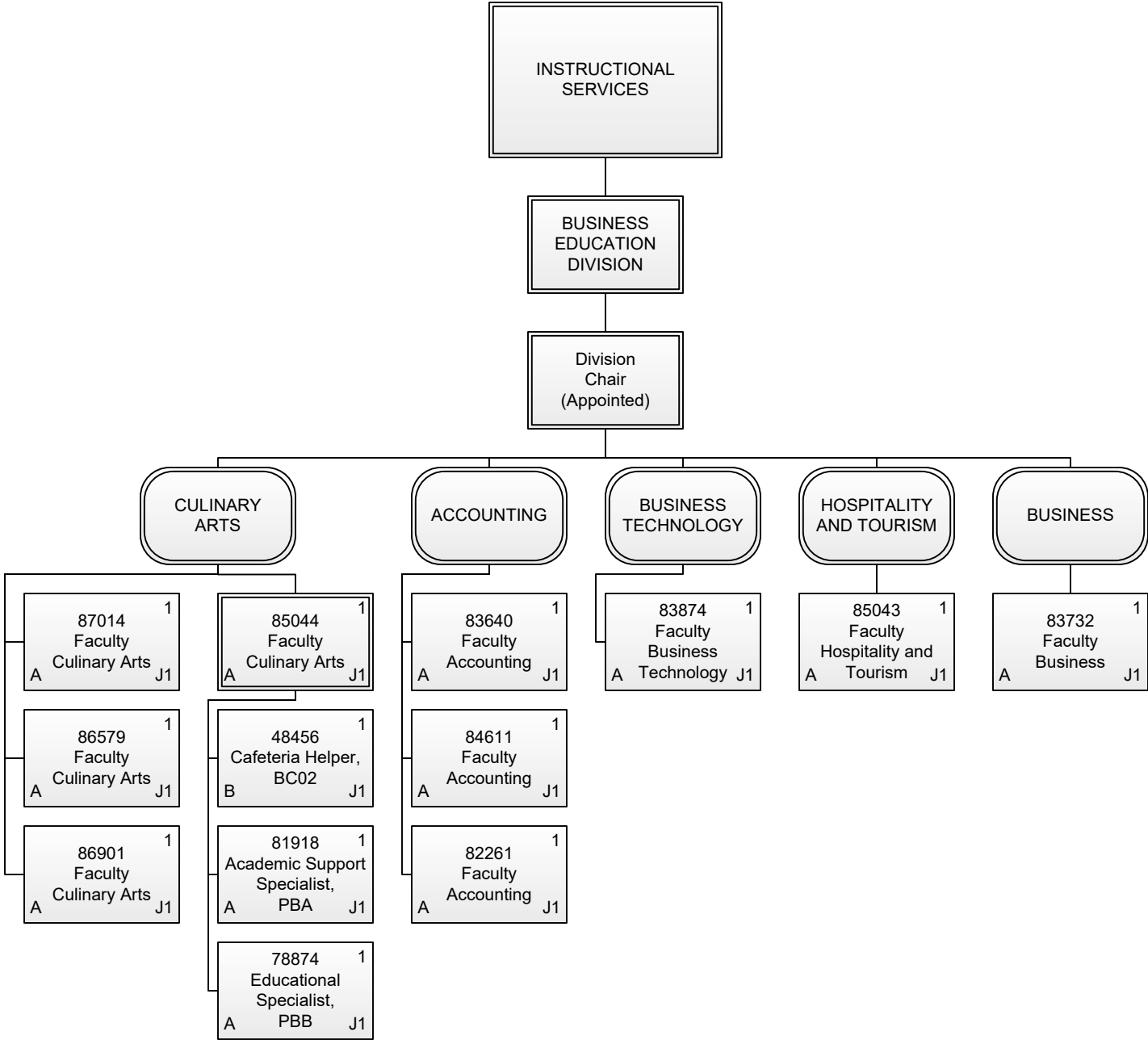
Permanent	12.00
General Fund	12.00
Grand Total	12.00



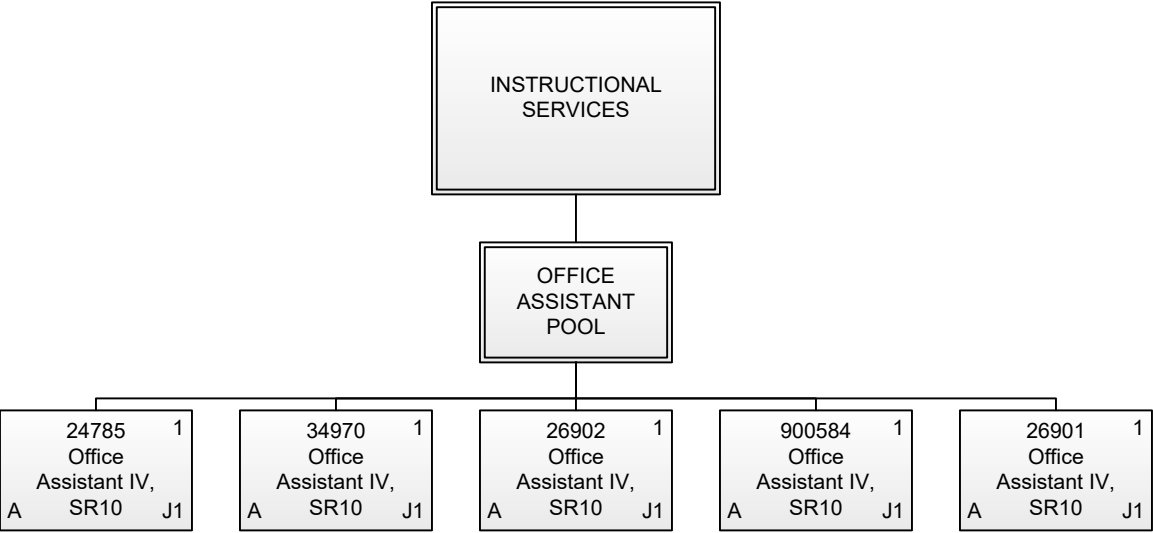
Permanent	14.00
General Fund	14.00
Grand Total	14.00



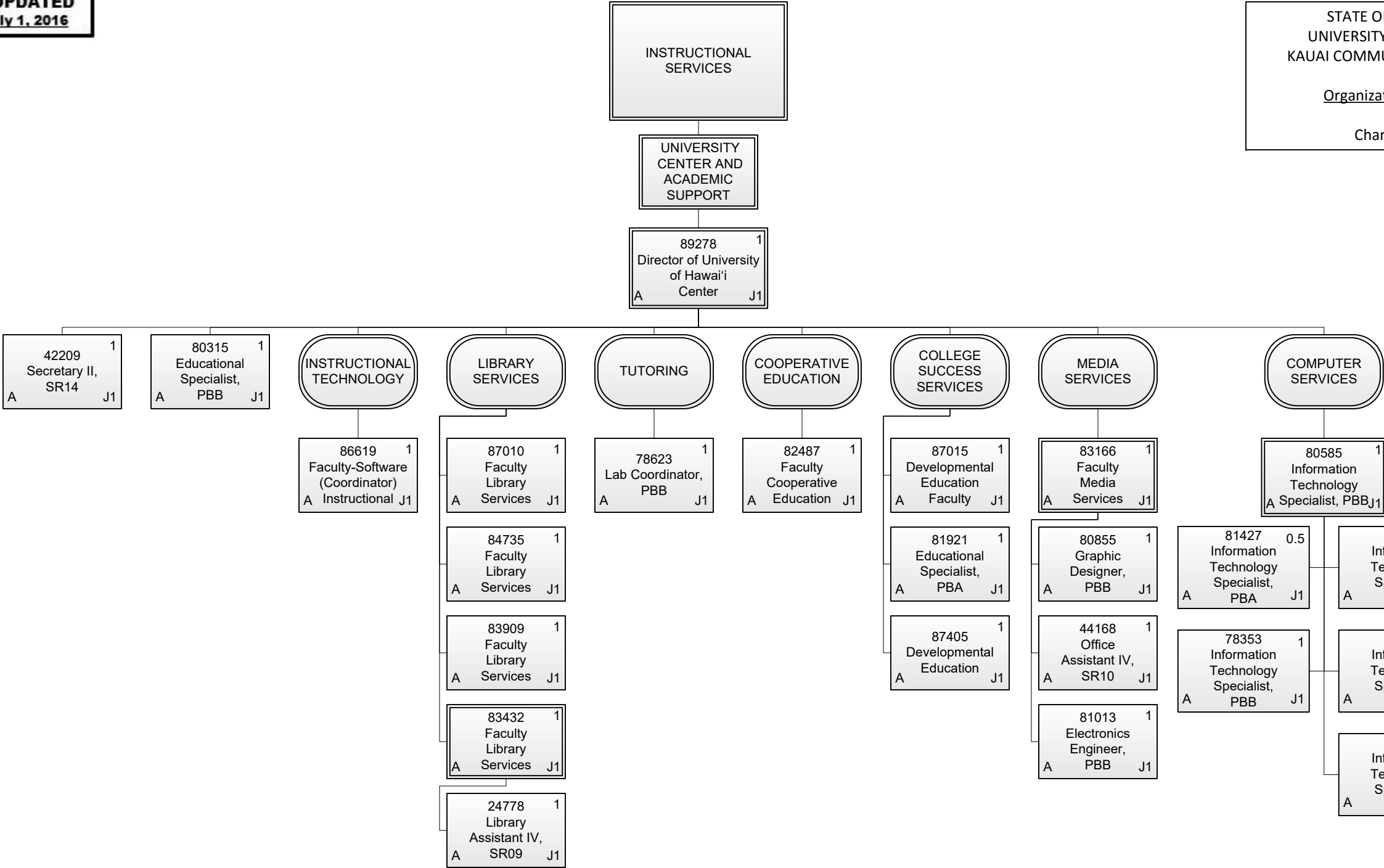
Permanent	14.00
General Fund	14.00
Grand Total	14.00



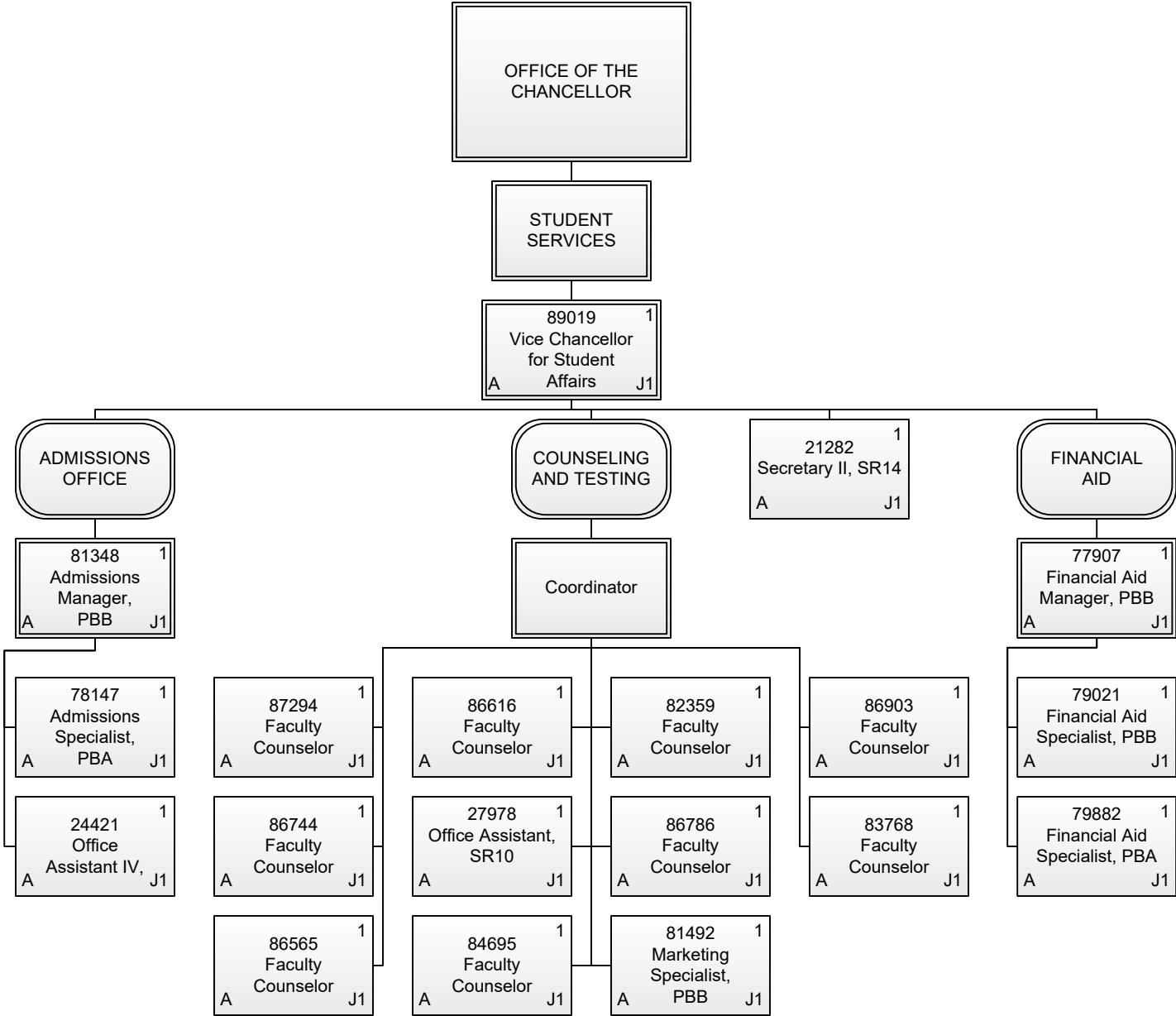
Permanent	13.00
General Fund	12.00
Special Fund	1.00
Grand Total	13.00



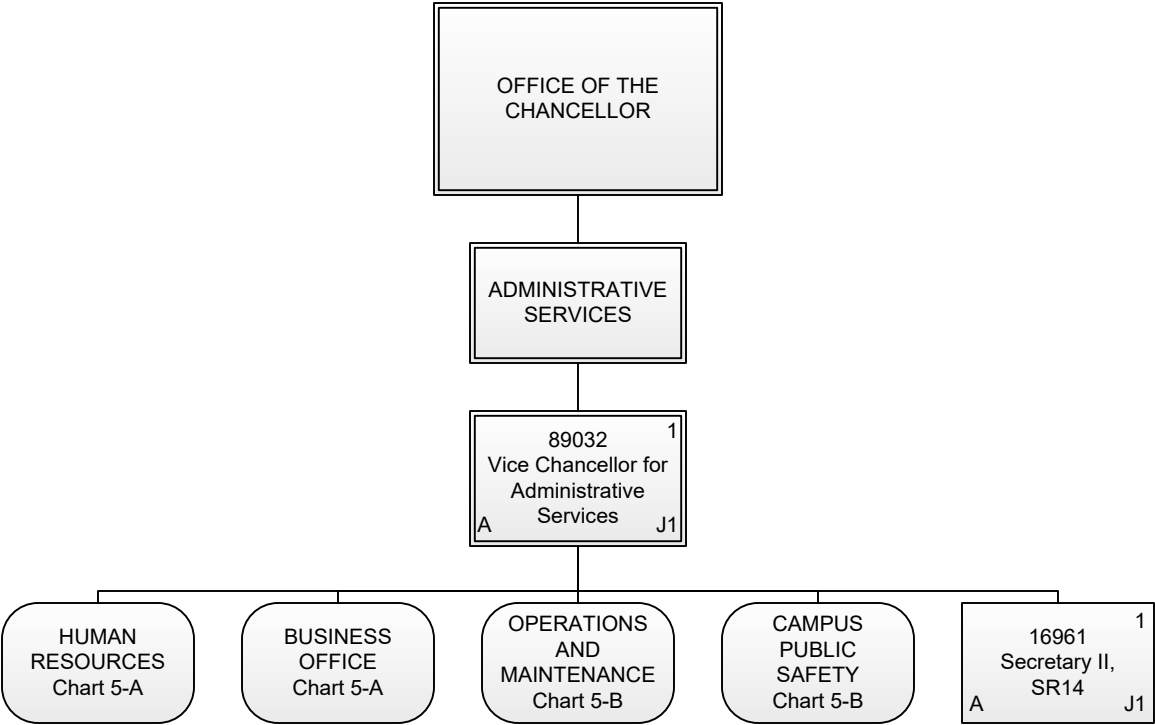
Permanent	5.00
General Fund	5.00
Grand Total	5.00



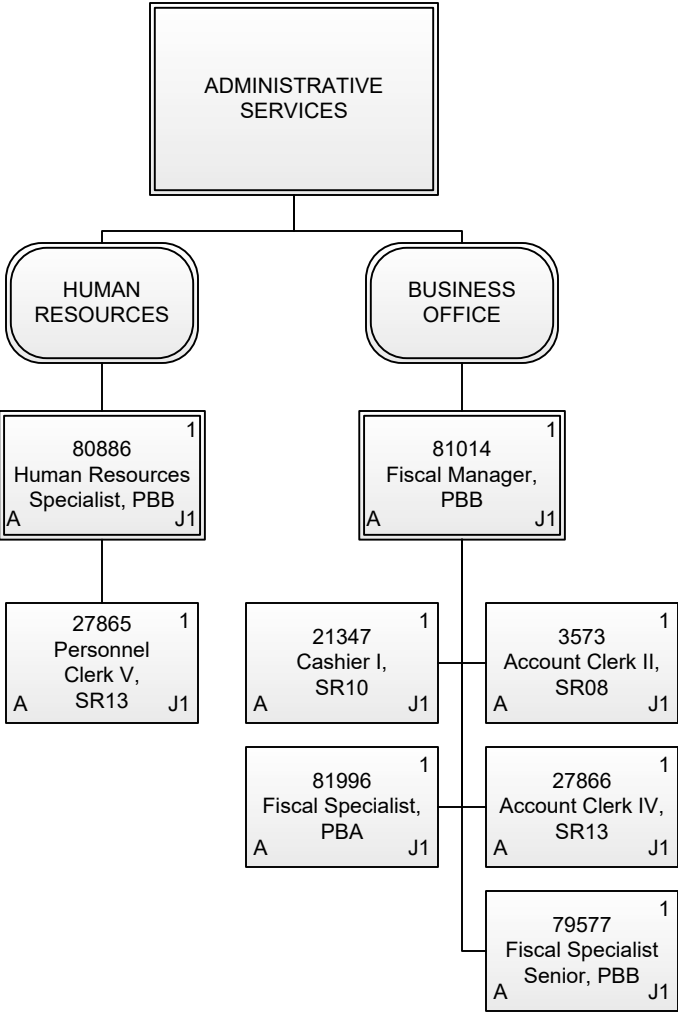
Permanent	23.00
General Fund	23.00
Grand Total	23.00



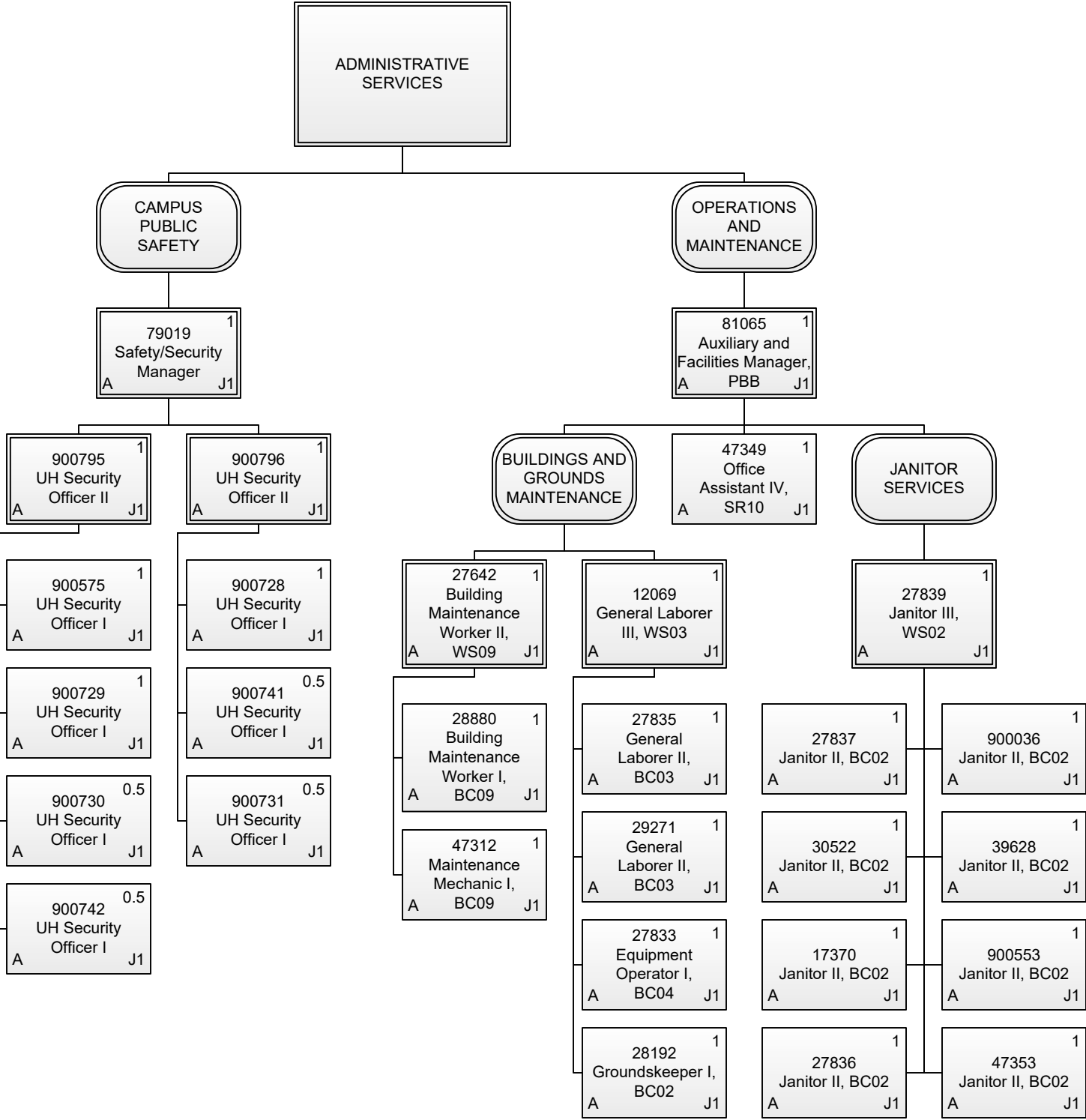
Permanent	19.00
General Fund	19.00
Grand Total	19.00



Permanent	2.00
General Fund	2.00
Grand Total	2.00



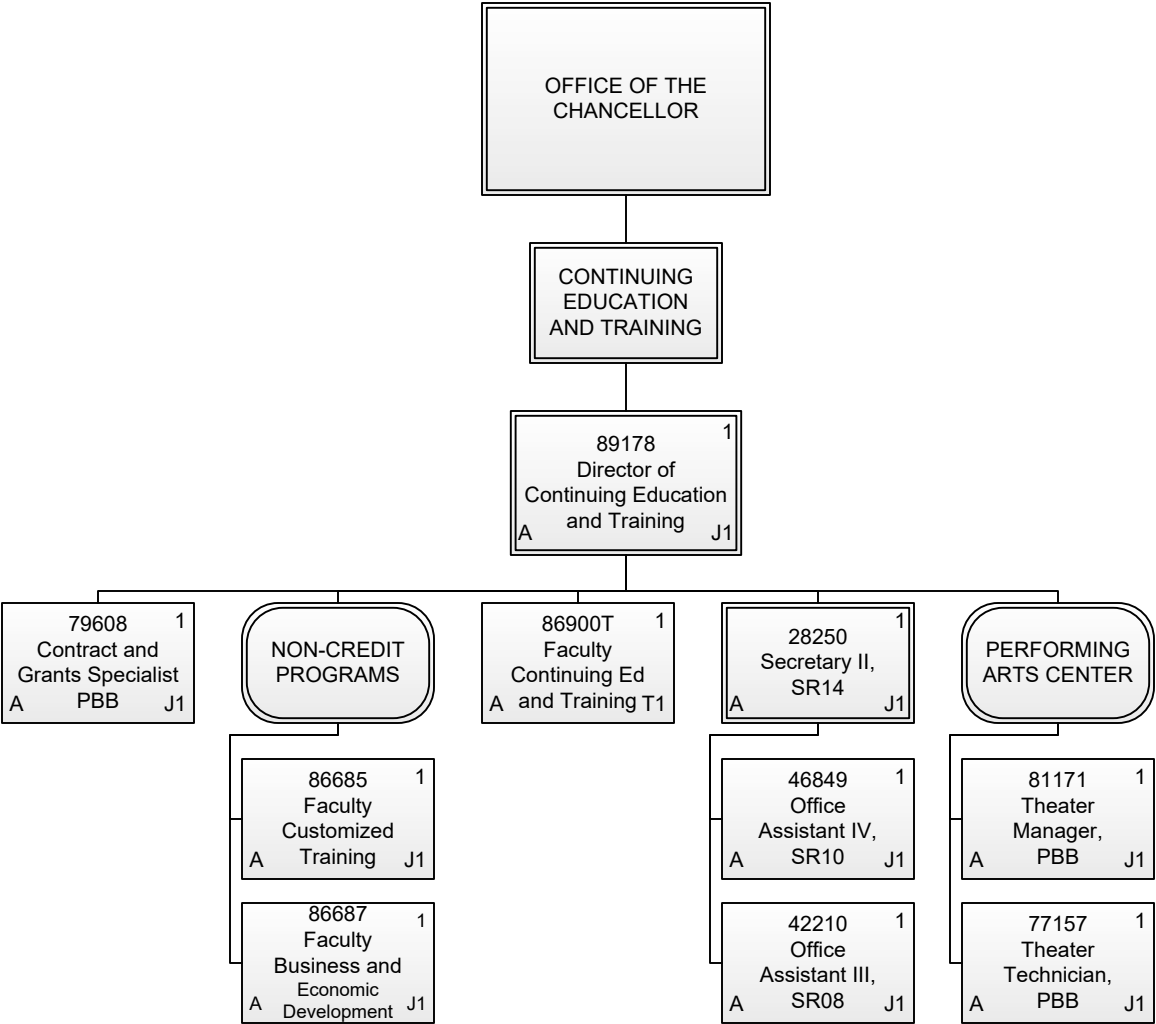
Permanent	8.00
General Fund	8.00
Grand Total	8.00



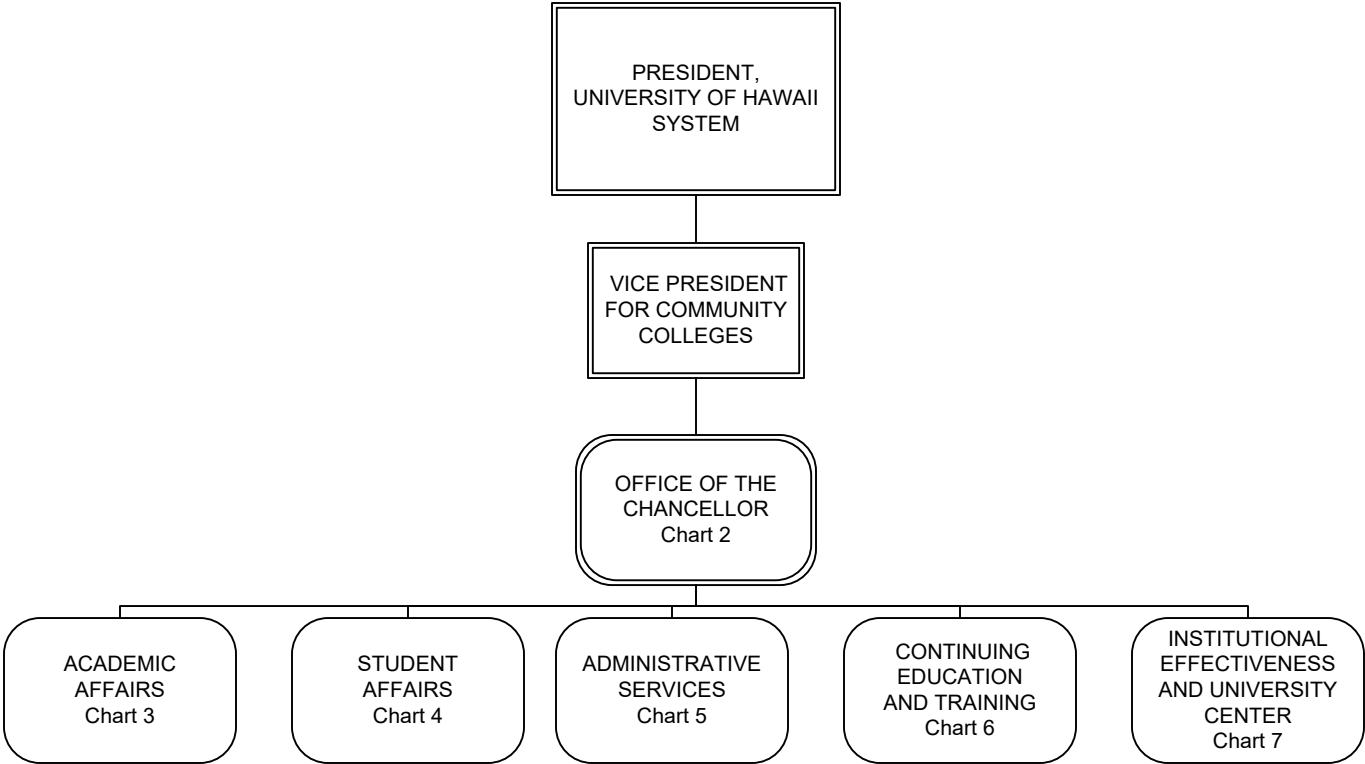
Permanent	27.00
General Fund	27.00
Grand Total	27.00

Organization Chart

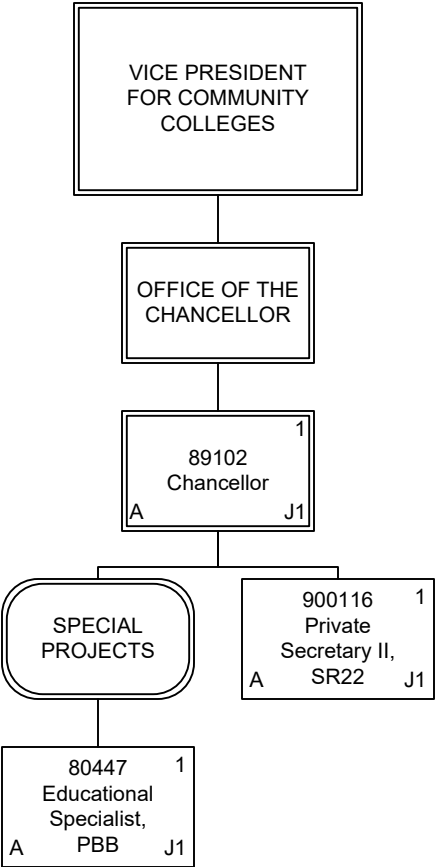
Chart 6



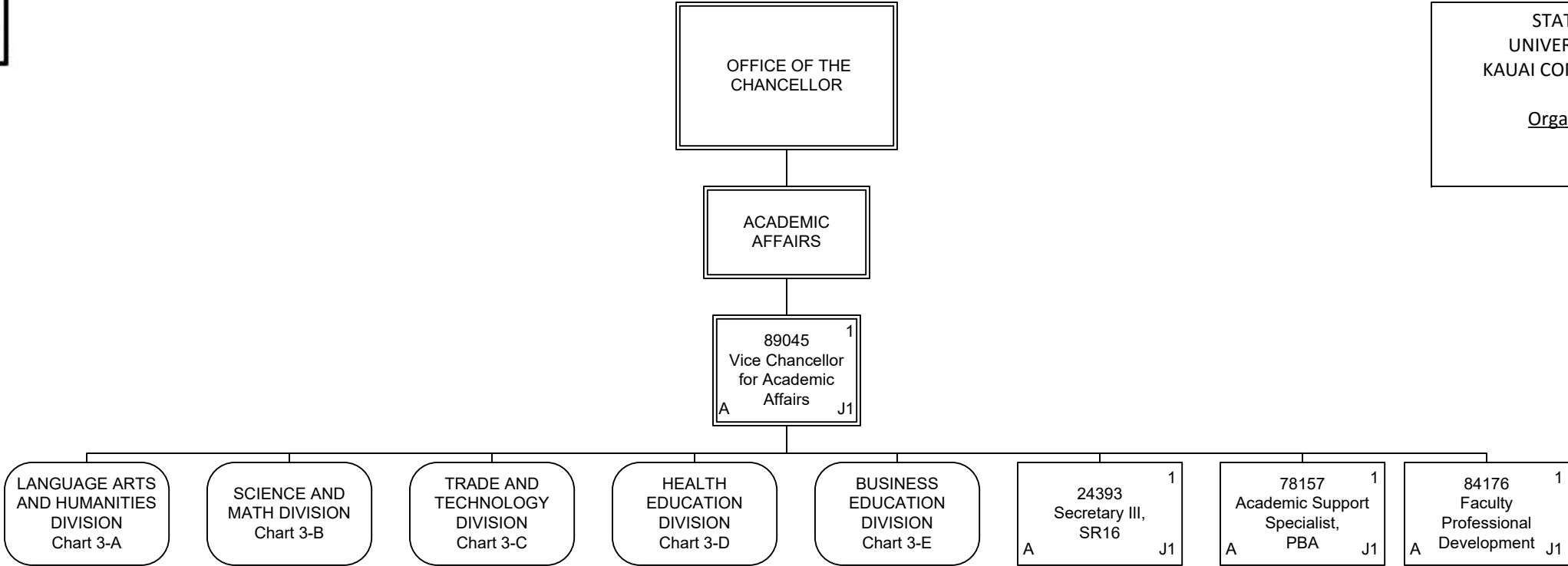
Permanent	9.00
General Fund	9.00
Temporary	1.00
General Fund	1.00
Grand Total	10.00



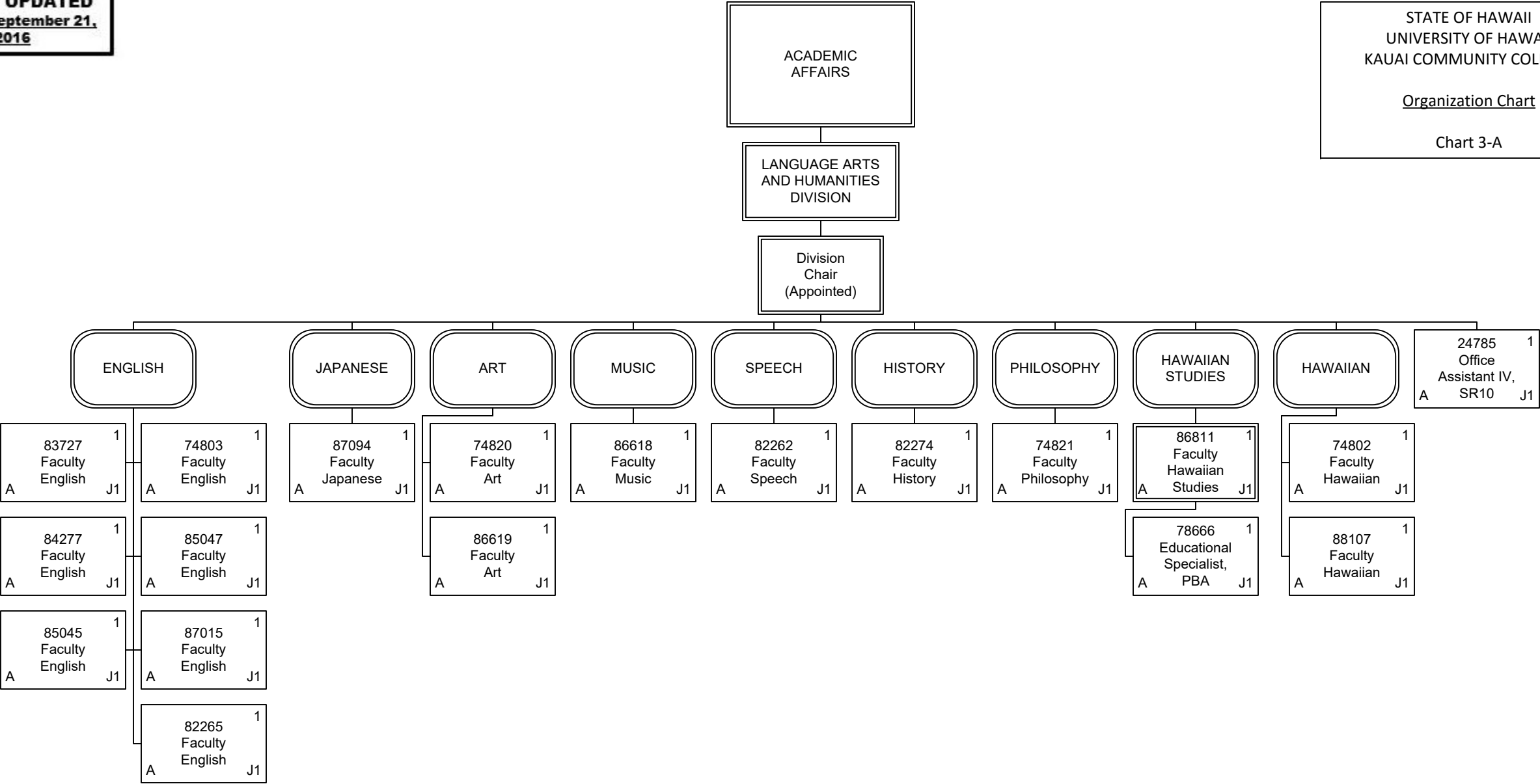
Permanent	169.00
General Fund	168.00
Special Fund	1.00
Temporary	1.00
General Fund	1.00
Grand Total	170.00



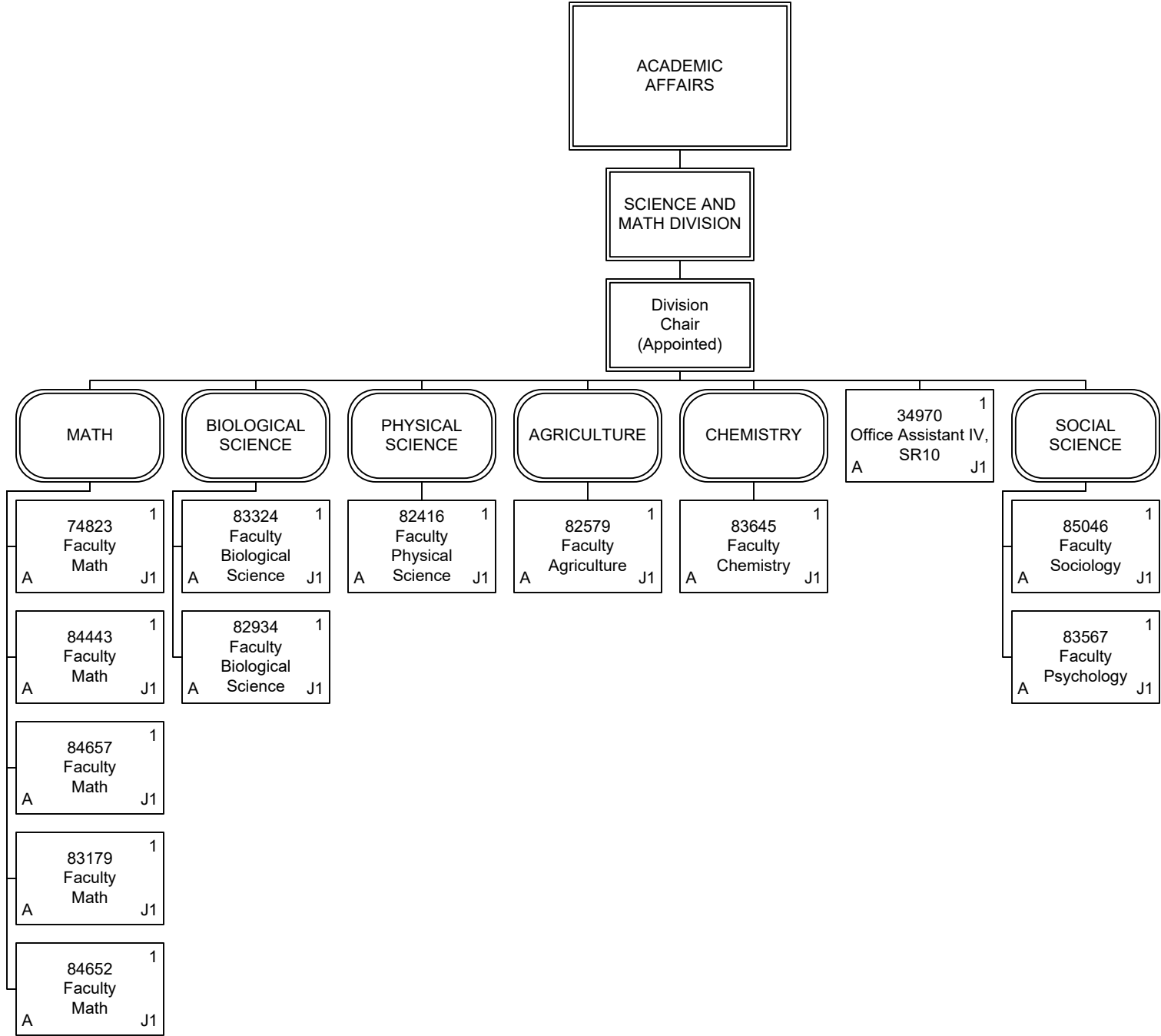
Permanent	3.00
General Fund	3.00
Grand Total	3.00



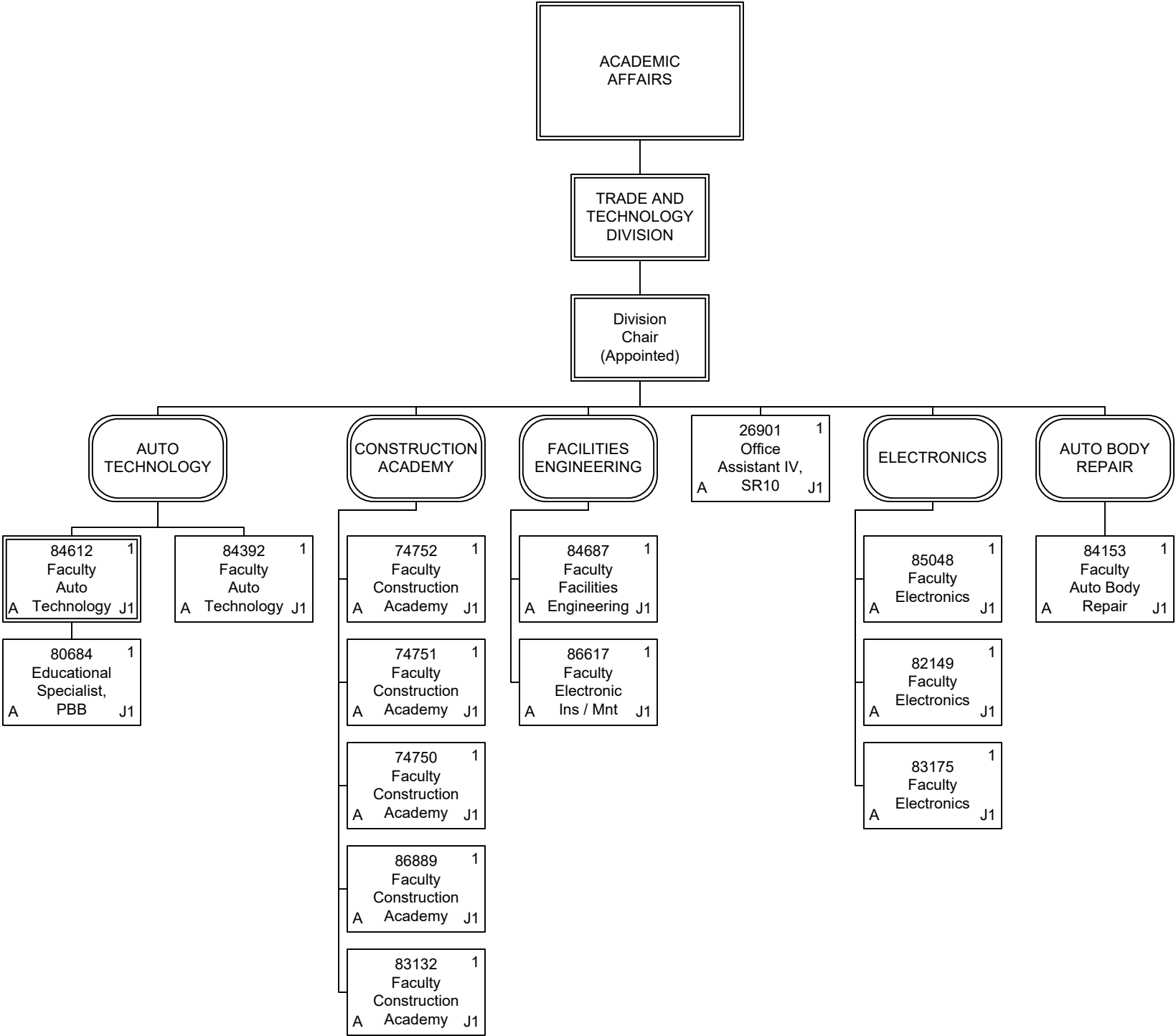
Permanent	4.00
General Fund	4.00
Grand Total	4.00



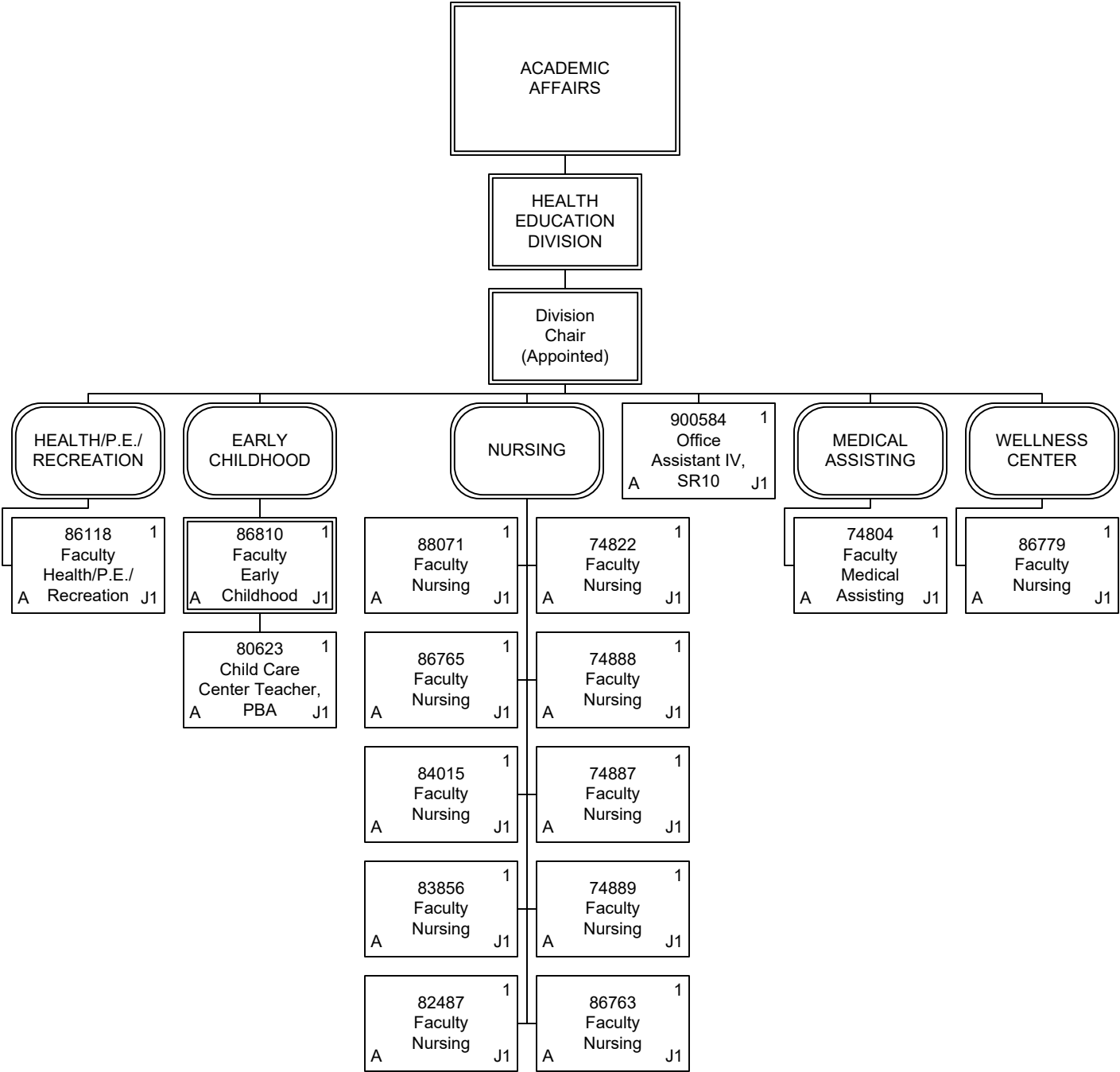
Permanent	19.00
General Fund	19.00
Grand Total	19.00



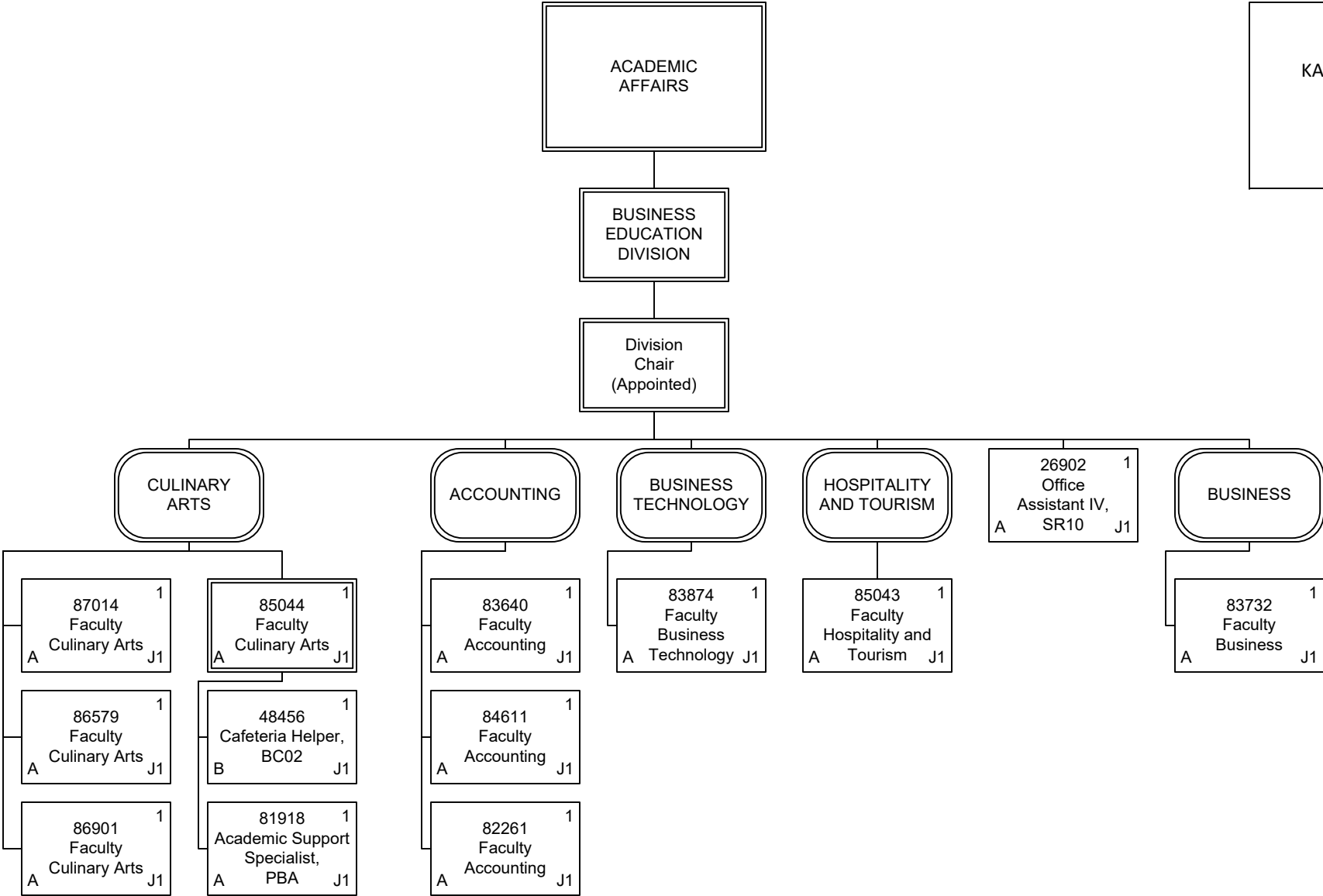
Permanent	13.00
General Fund	13.00
Grand Total	13.00



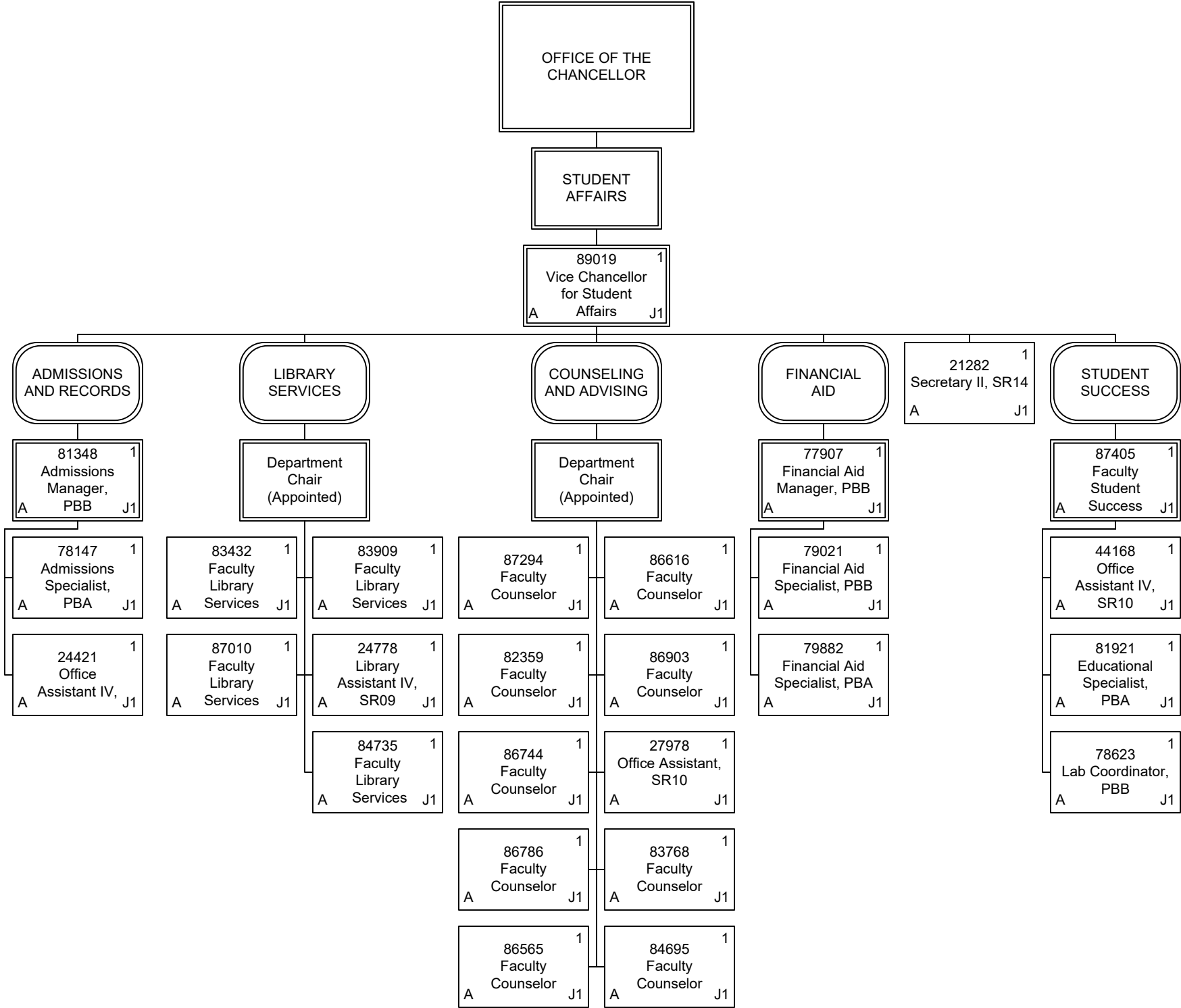
Permanent	15.00
General Fund	15.00
Grand Total	15.00



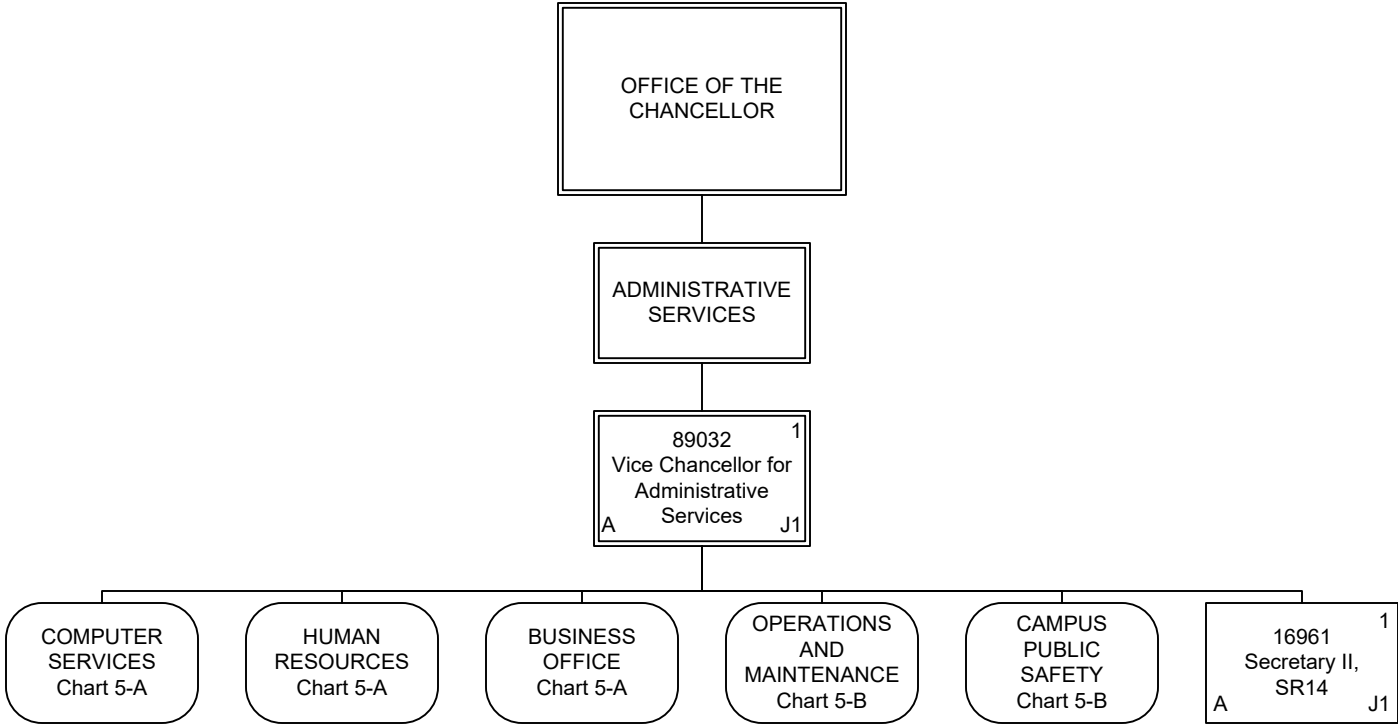
Permanent	16.00
General Fund	16.00
Grand Total	16.00



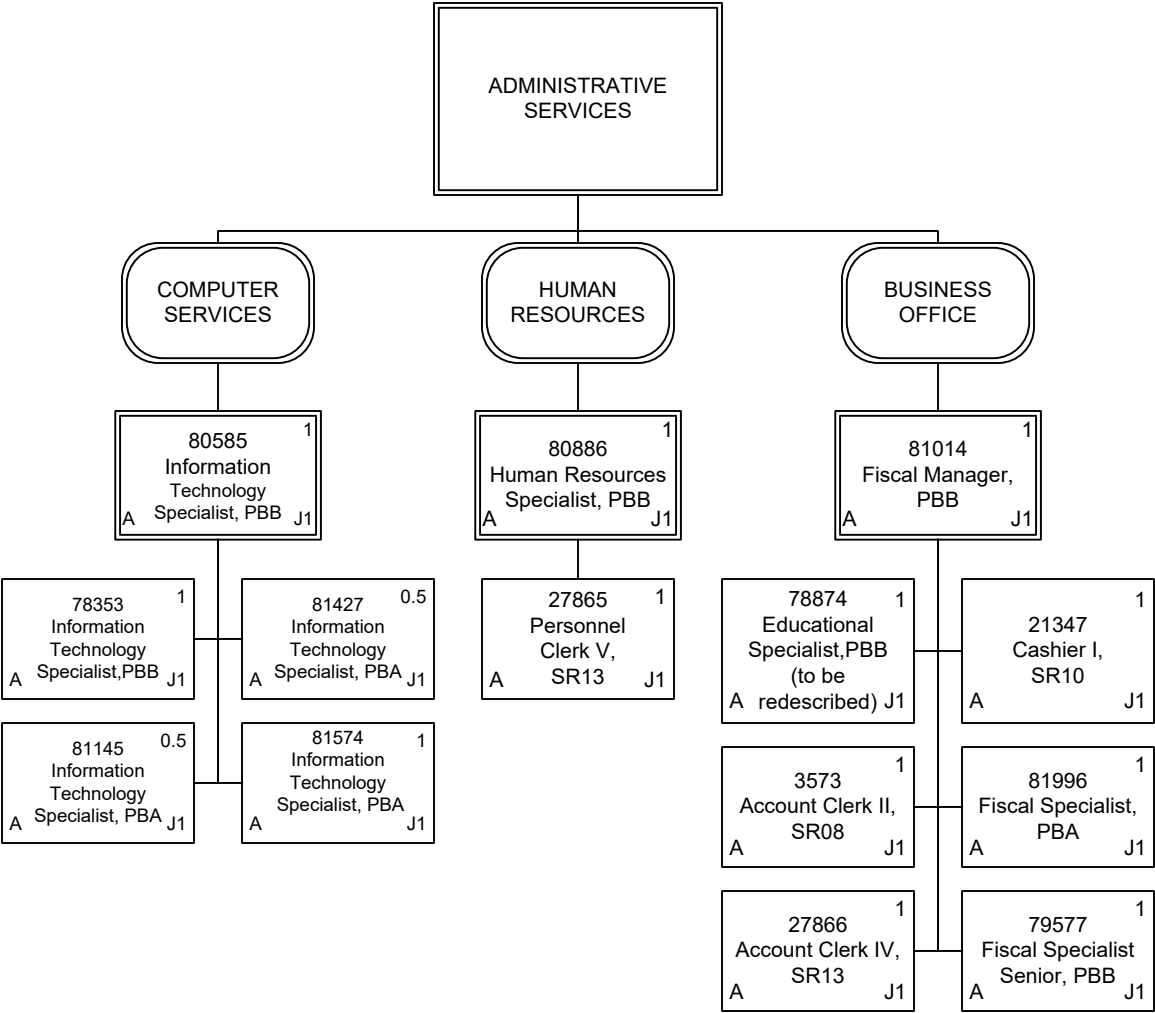
Permanent	13.00
General Fund	12.00
Special Fund	1.00
Grand Total	13.00



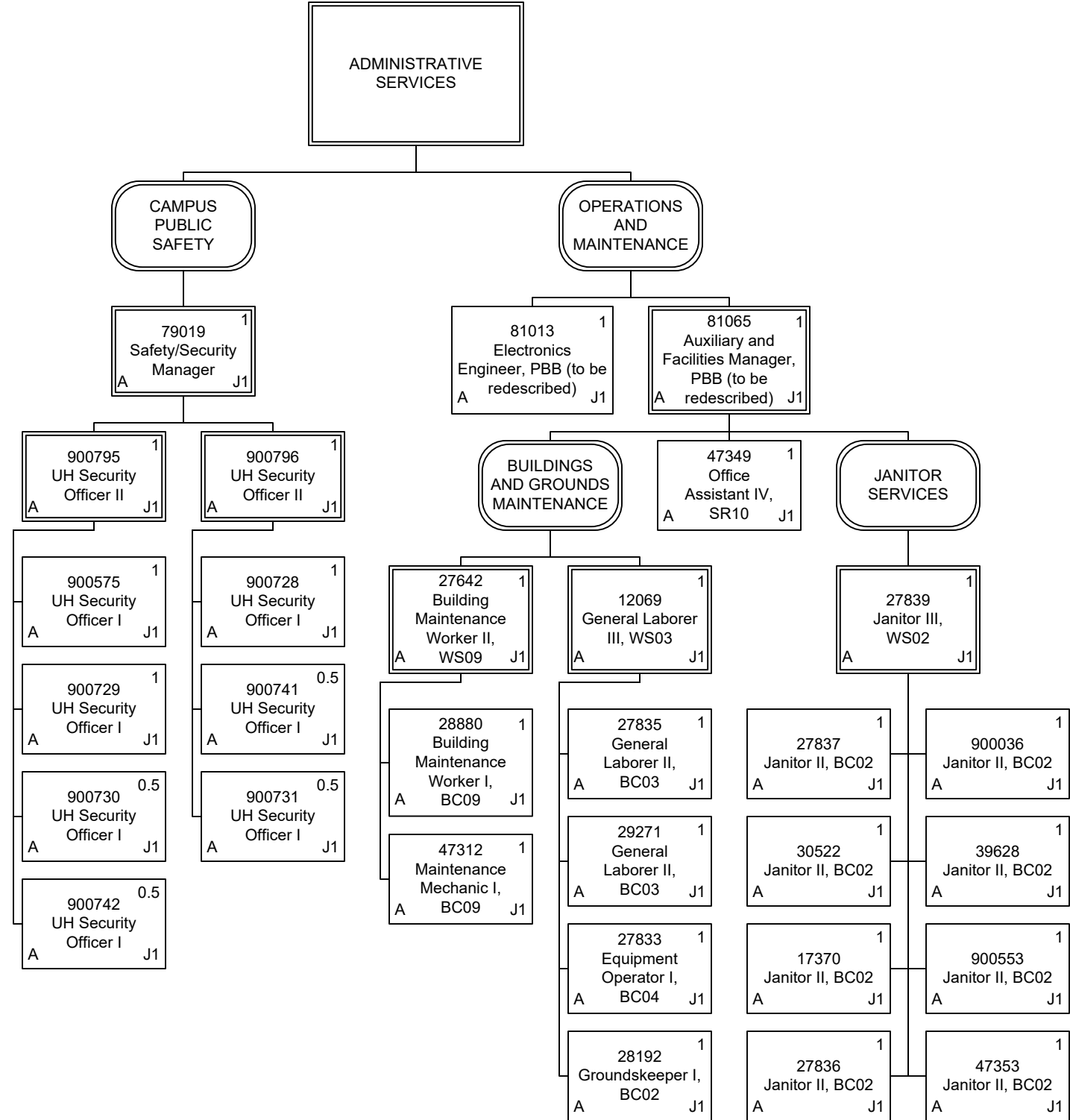
Permanent	27.00
General Fund	27.00
Grand Total	27.00



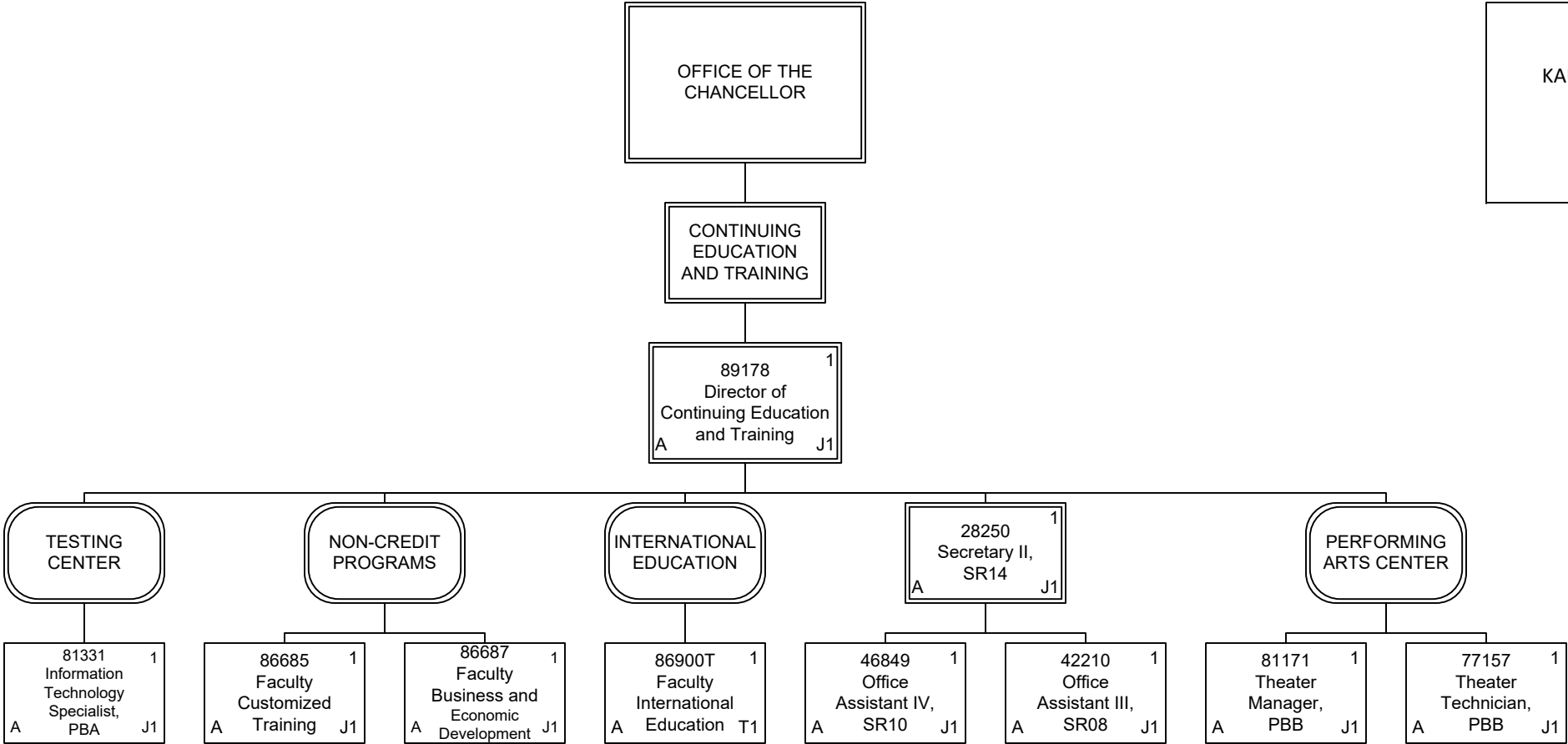
Permanent	2.00
General Fund	2.00
Grand Total	2.00



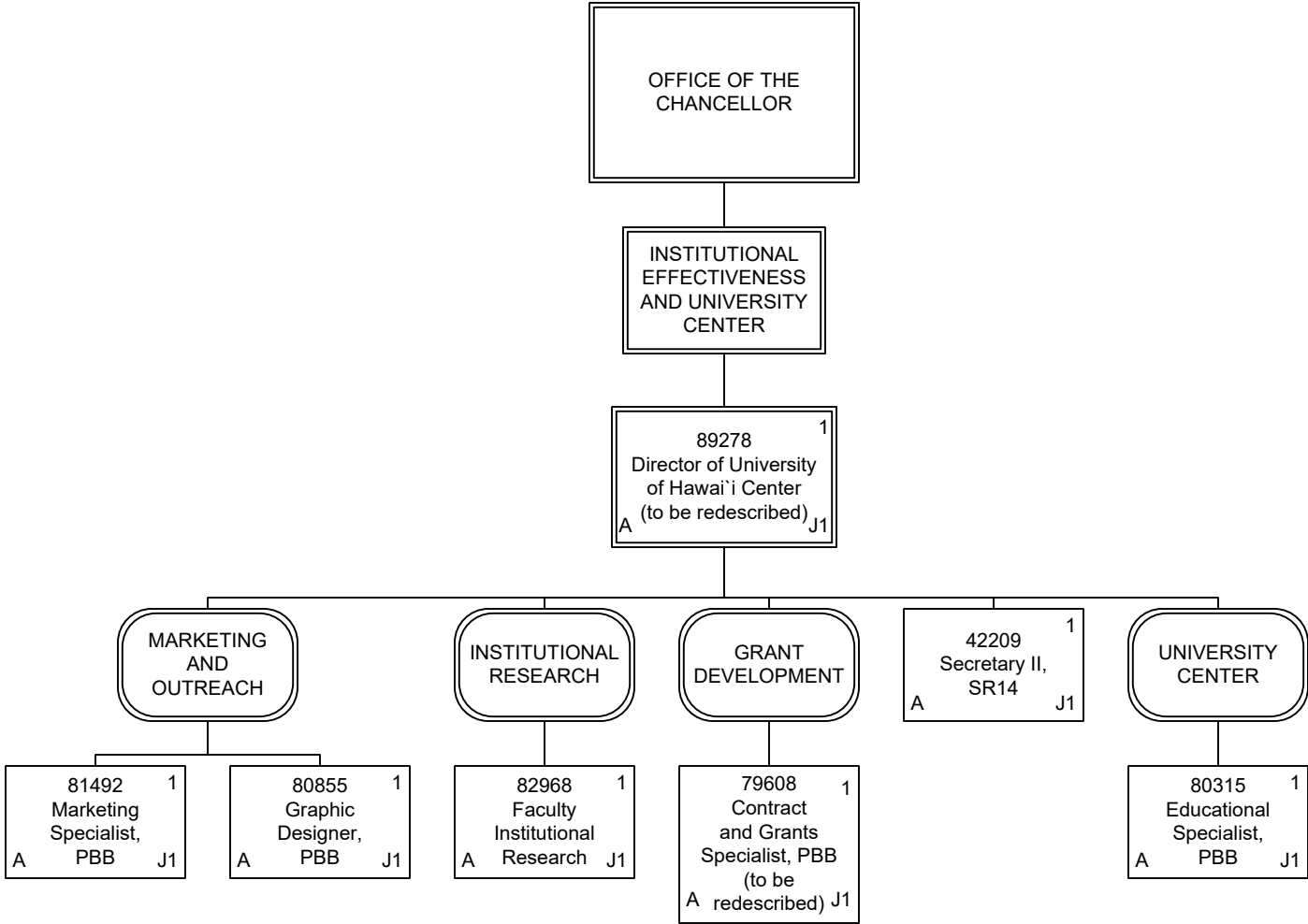
Permanent	13.00
General Fund	13.00
Grand Total	13.00



Permanent	28.00
General Fund	28.00
Grand Total	28.00



Permanent	9.00
General Fund	9.00
Temporary	1.00
General Fund	1.00
Grand Total	10.00



Permanent	7.00
General Fund	7.00
Grand Total	7.00