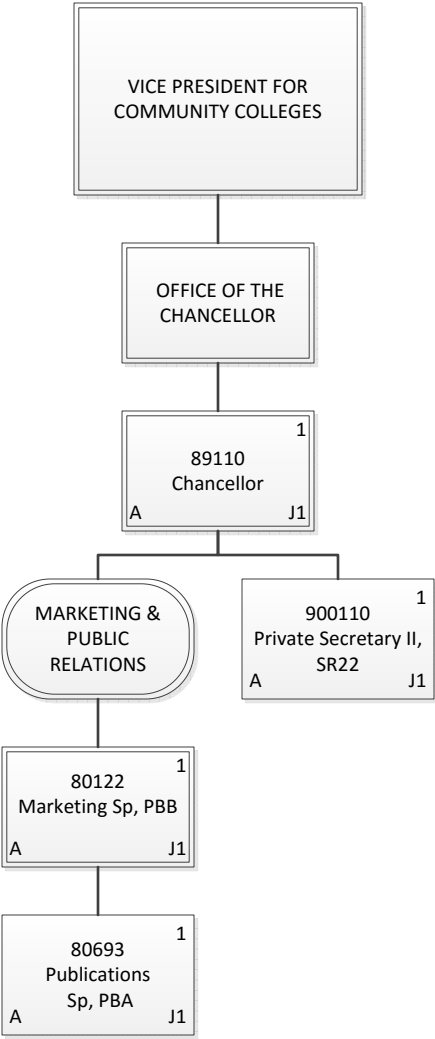


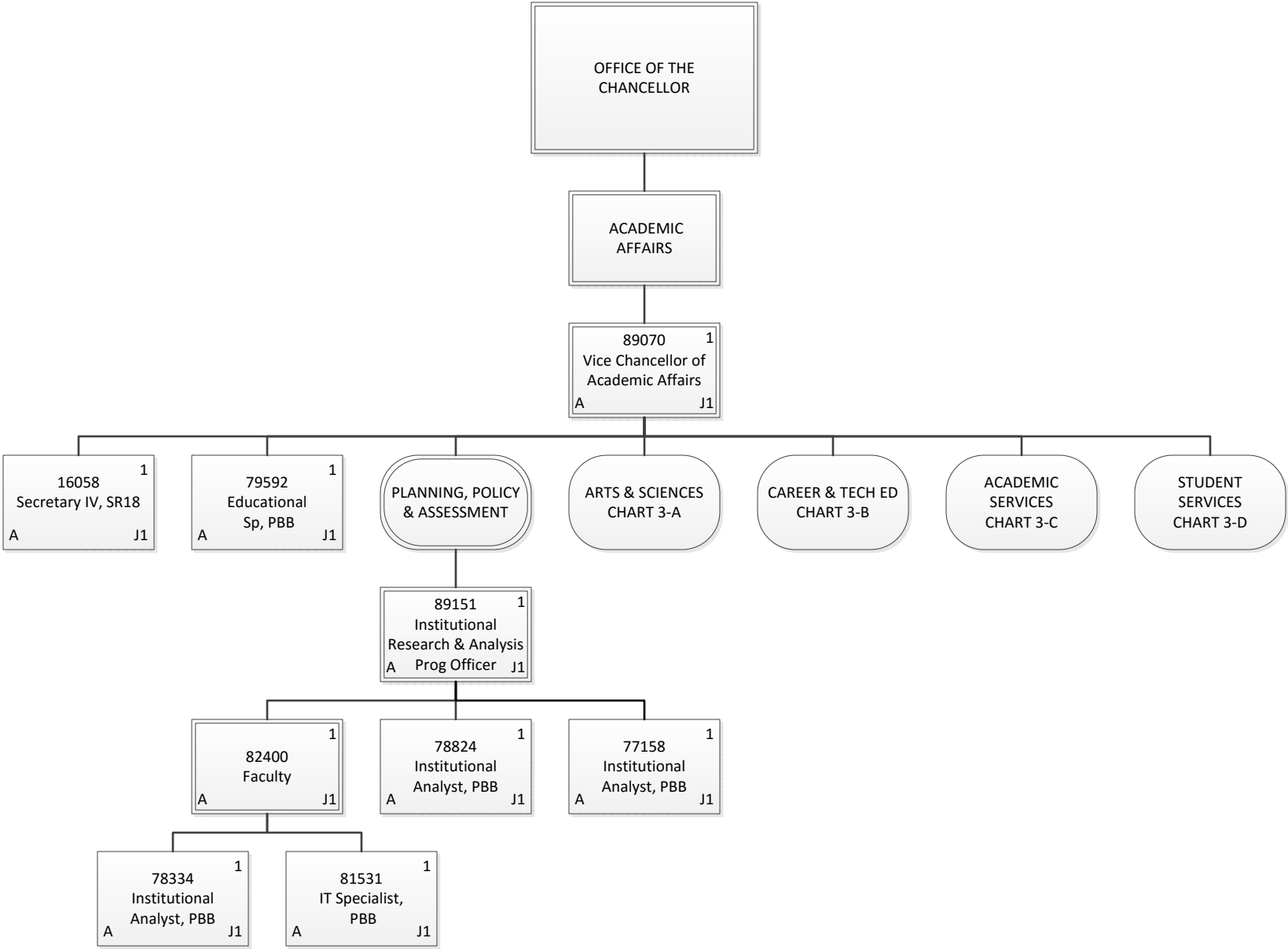
Permanent	347.00
General Fund	337.00
Special Fund	10.00
Temporary	3.00
General Fund	3.00
Grand Total	350.00

Organization Chart

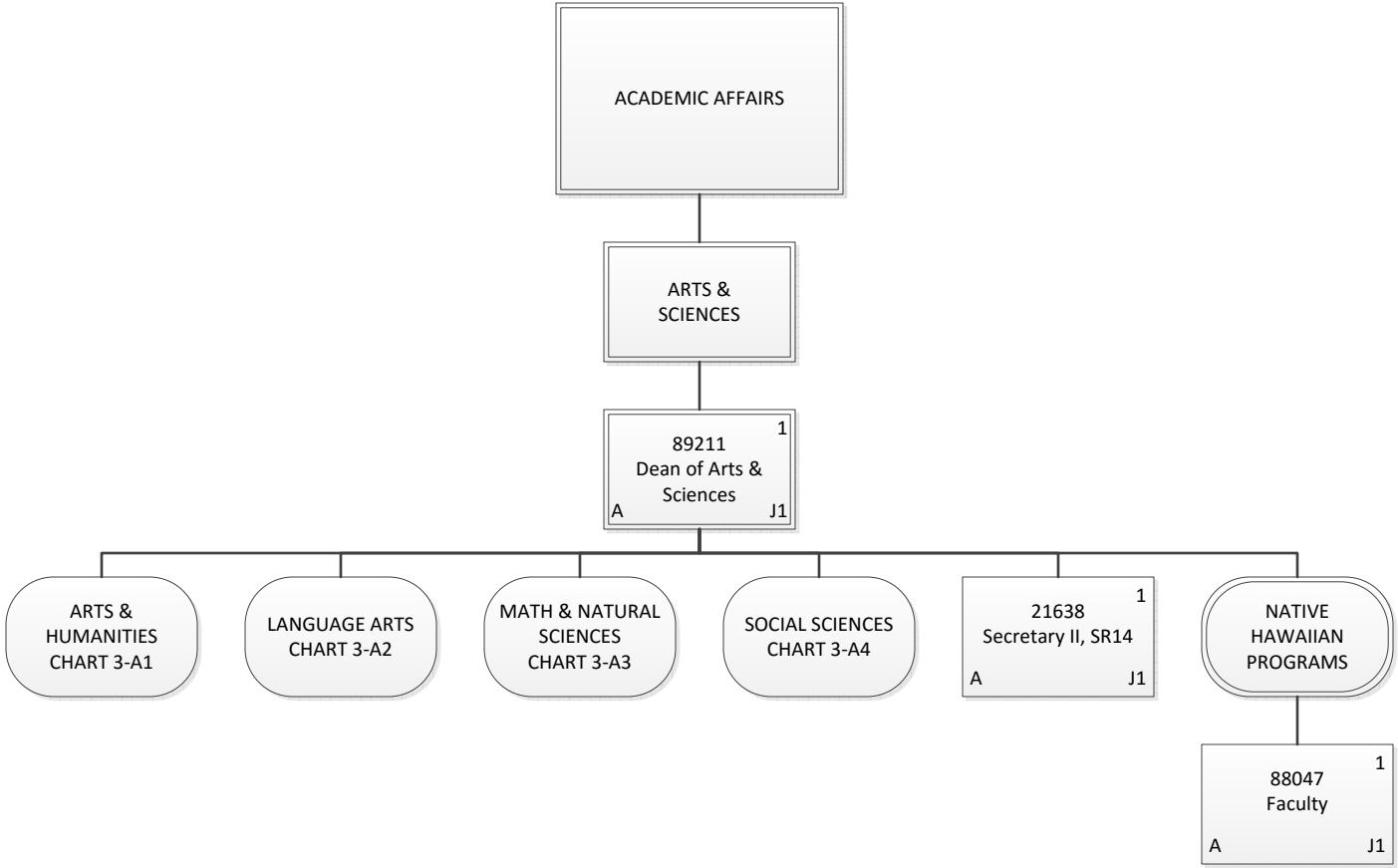
Chart 2



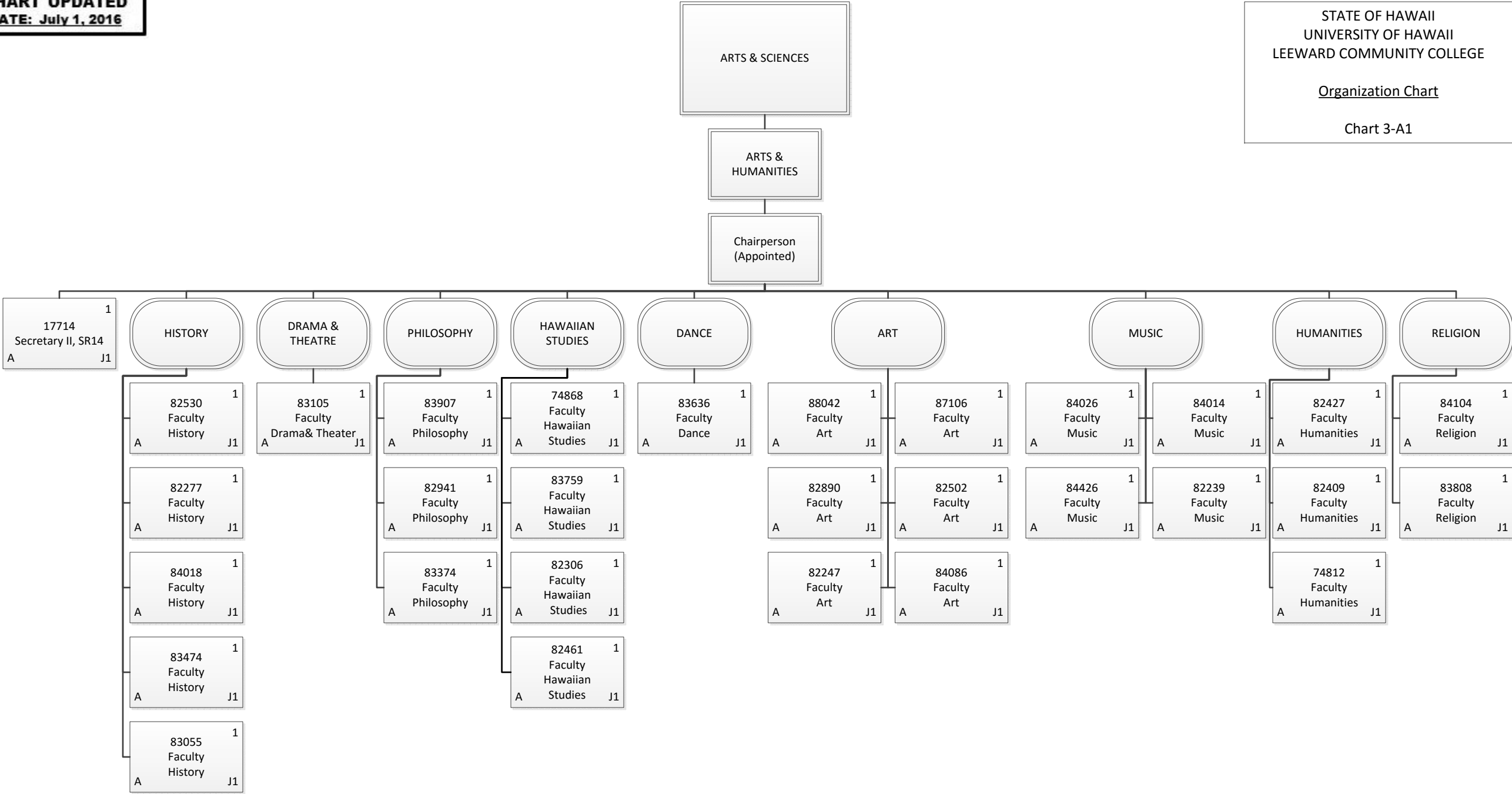
Permanent	4.00
General Fund	4.00
Grand Total	4.00



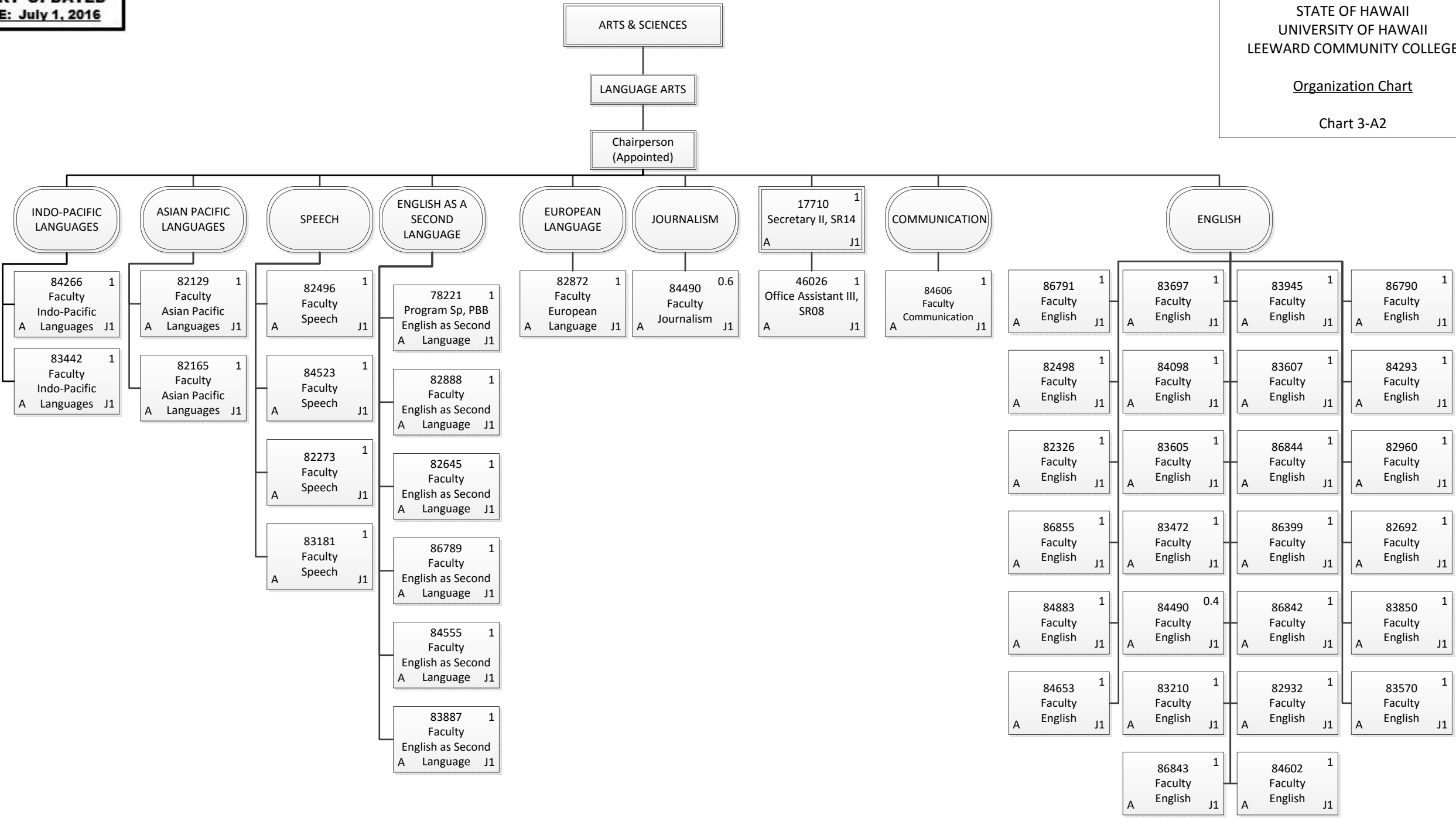
Permanent	9.00
General Fund	9.00
Grand Total	9.00



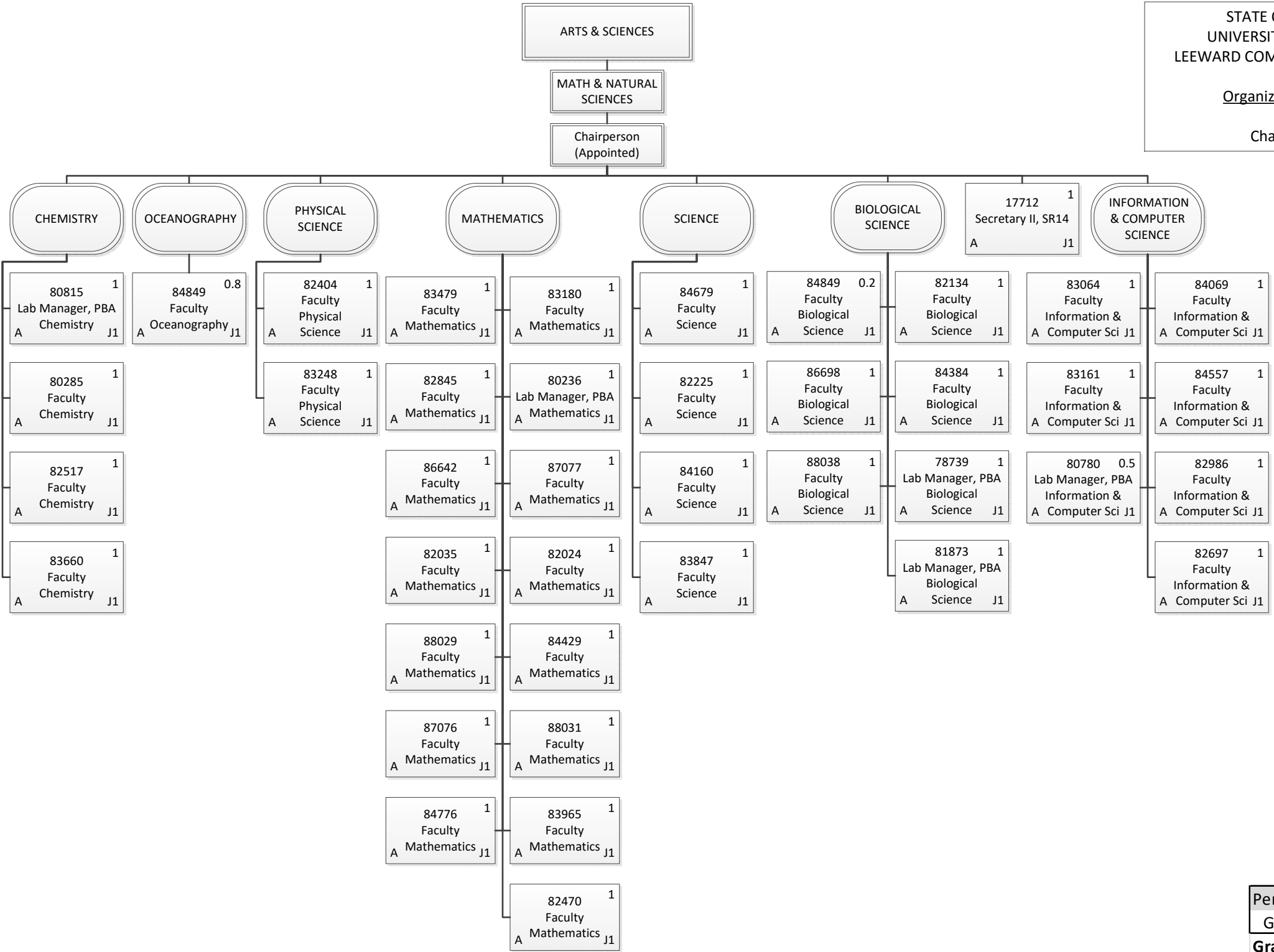
Permanent	3.00
General Fund	3.00
Grand Total	3.00



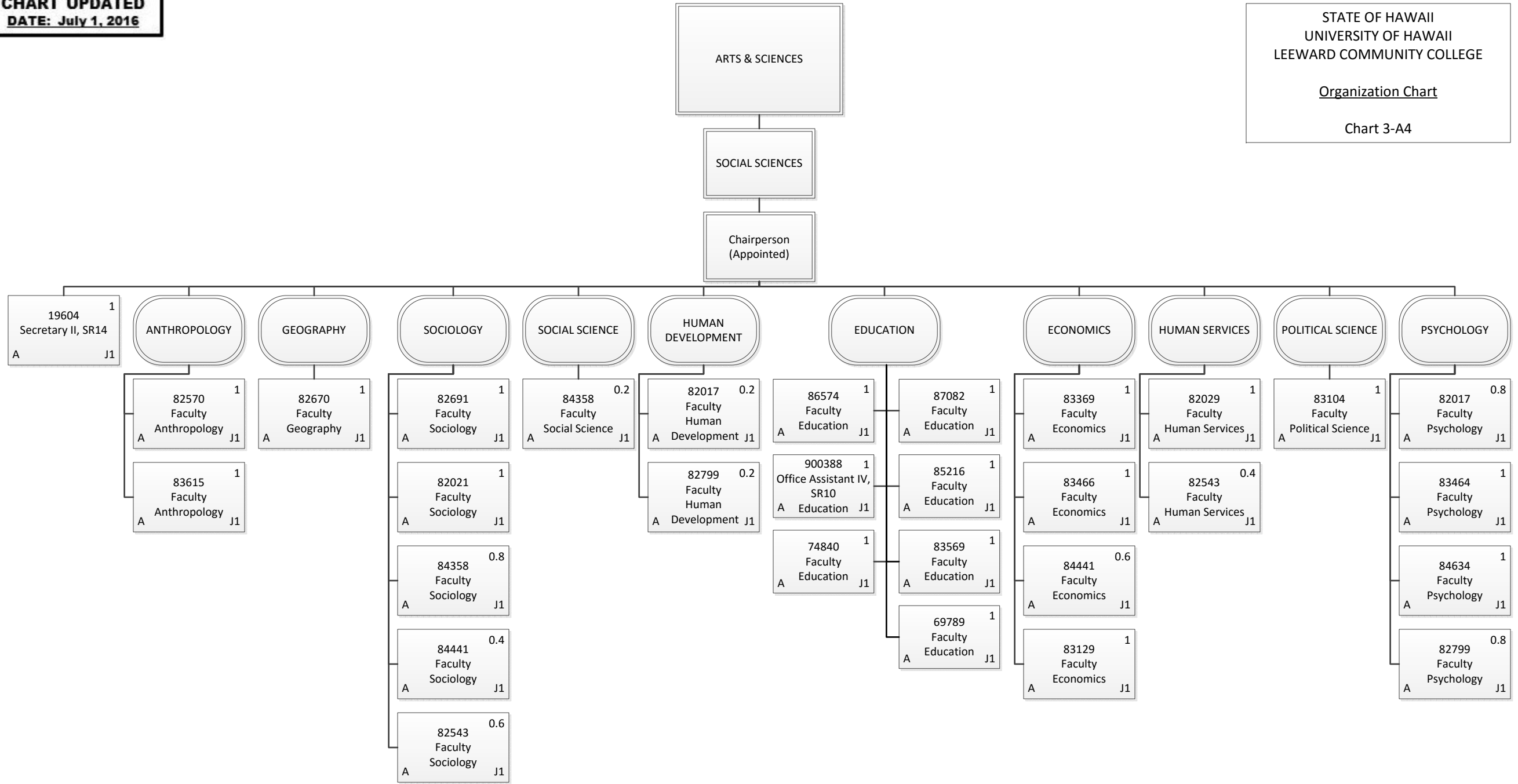
Permanent	30.00
General Fund	30.00
Grand Total	30.00



Permanent	44.00
General Fund	44.00
Grand Total	44.00



Permanent	39.50
General Fund	39.50
Grand Total	39.50

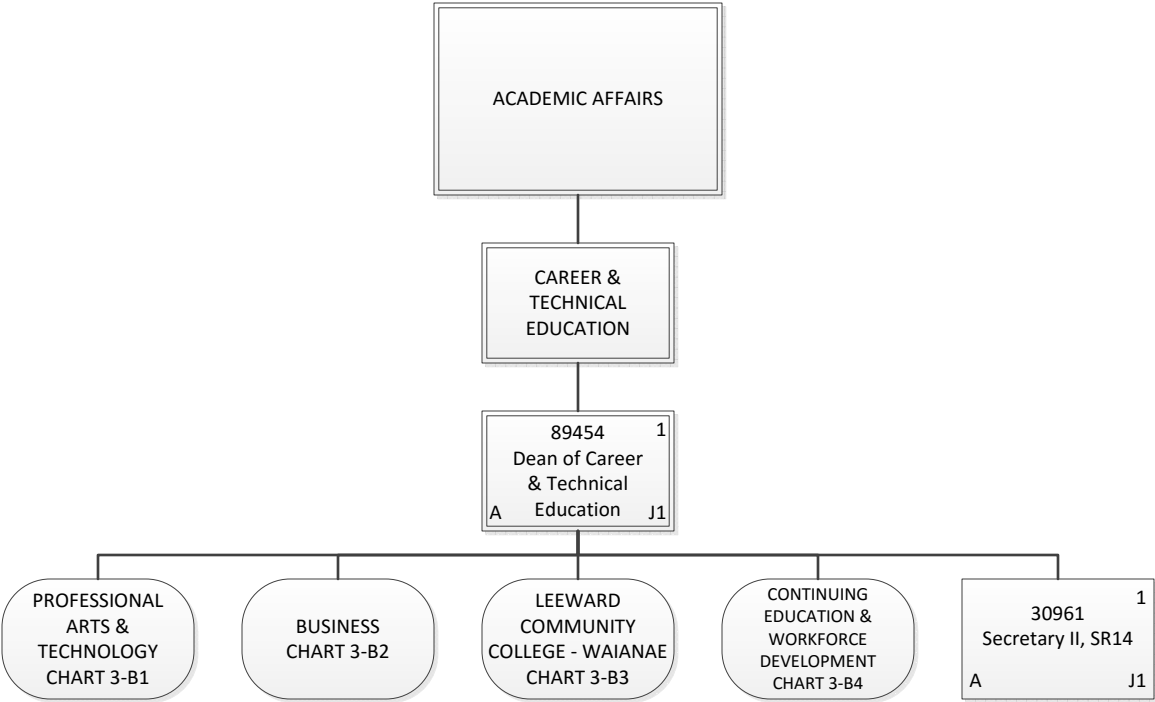


Permanent	25.00
General Fund	25.00
Grand Total	25.00



Organization Chart

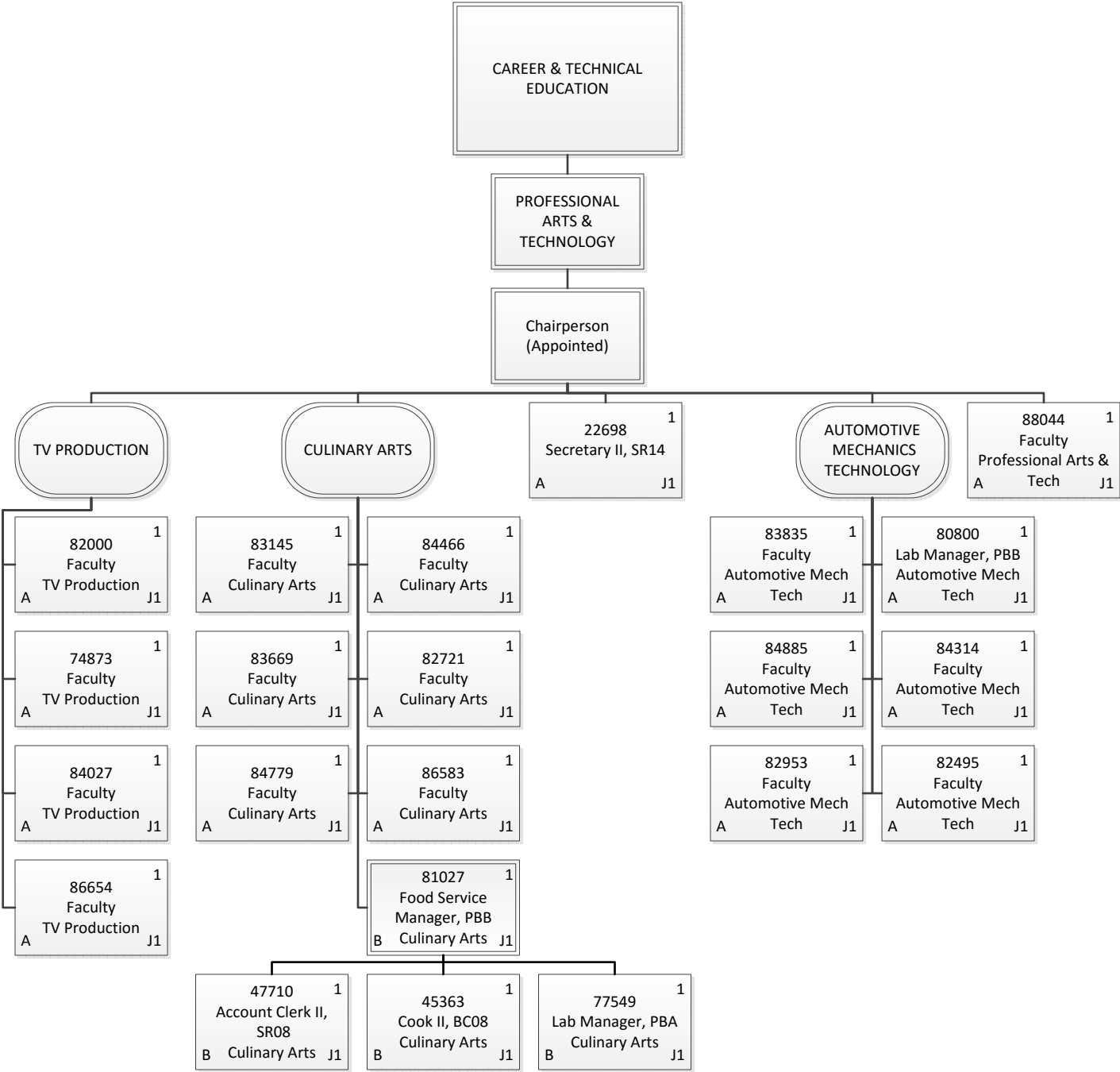
Chart 3-B



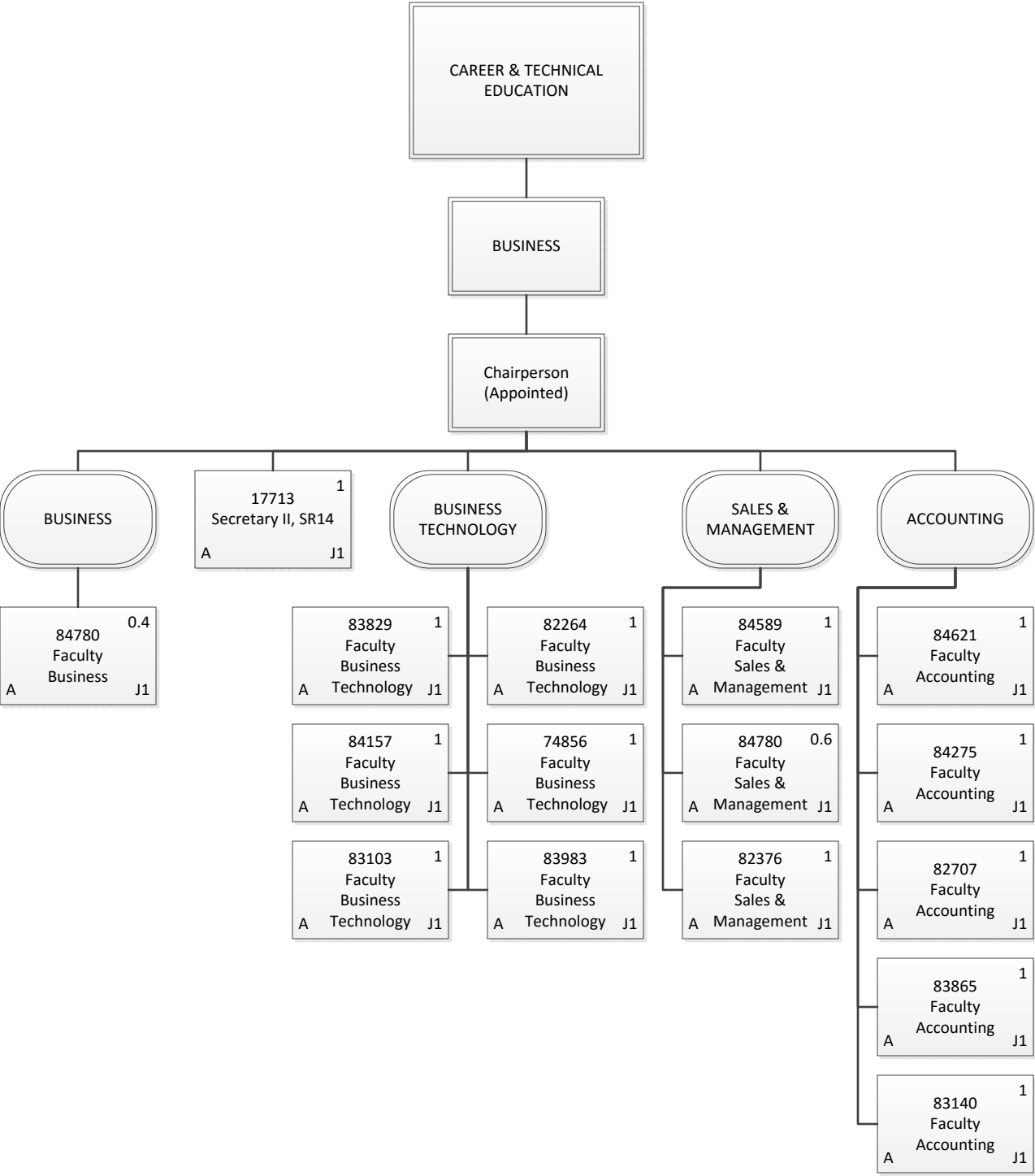
Permanent	2.00
General Fund	2.00
Grand Total	2.00

Organization Chart

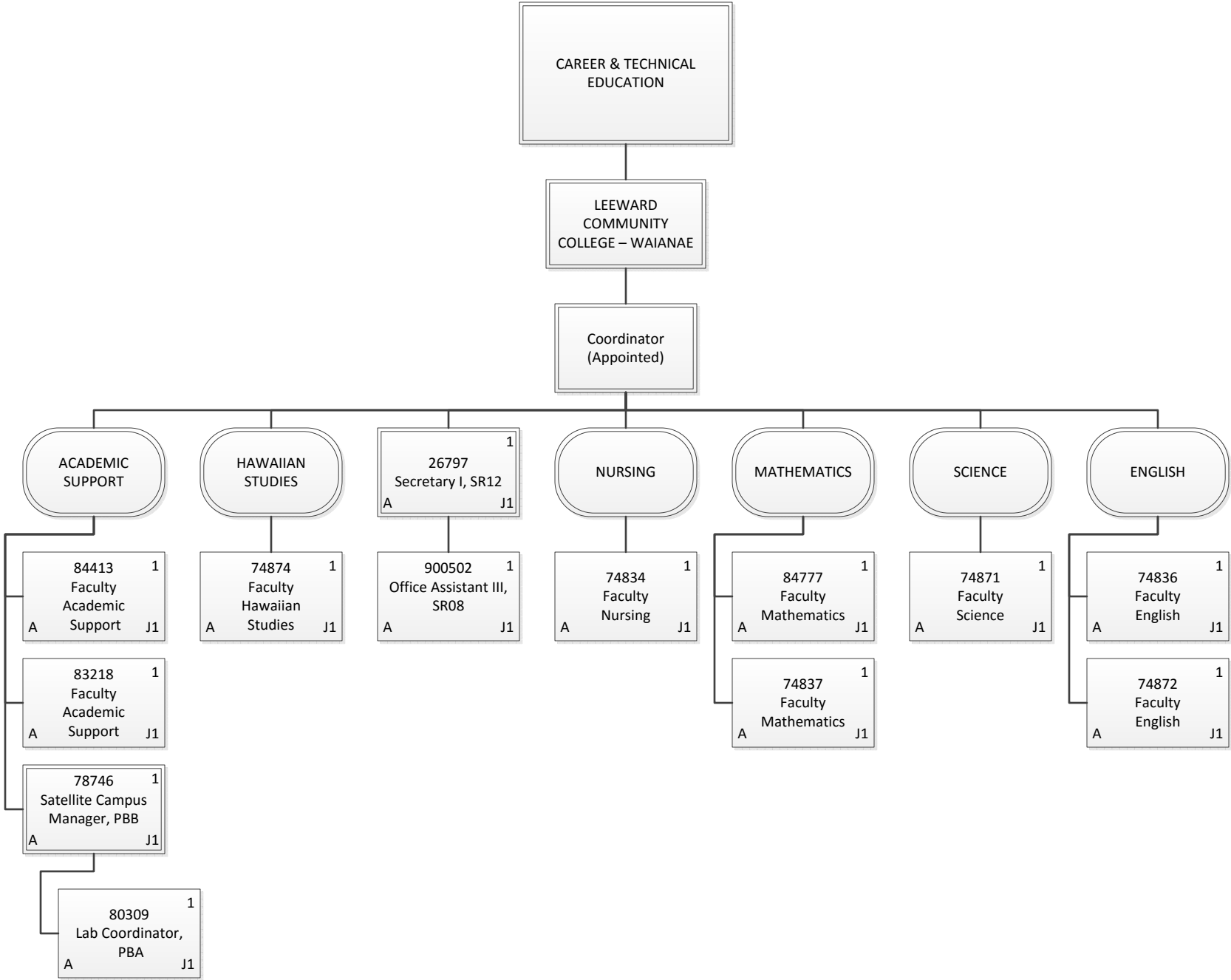
Chart 3-B1



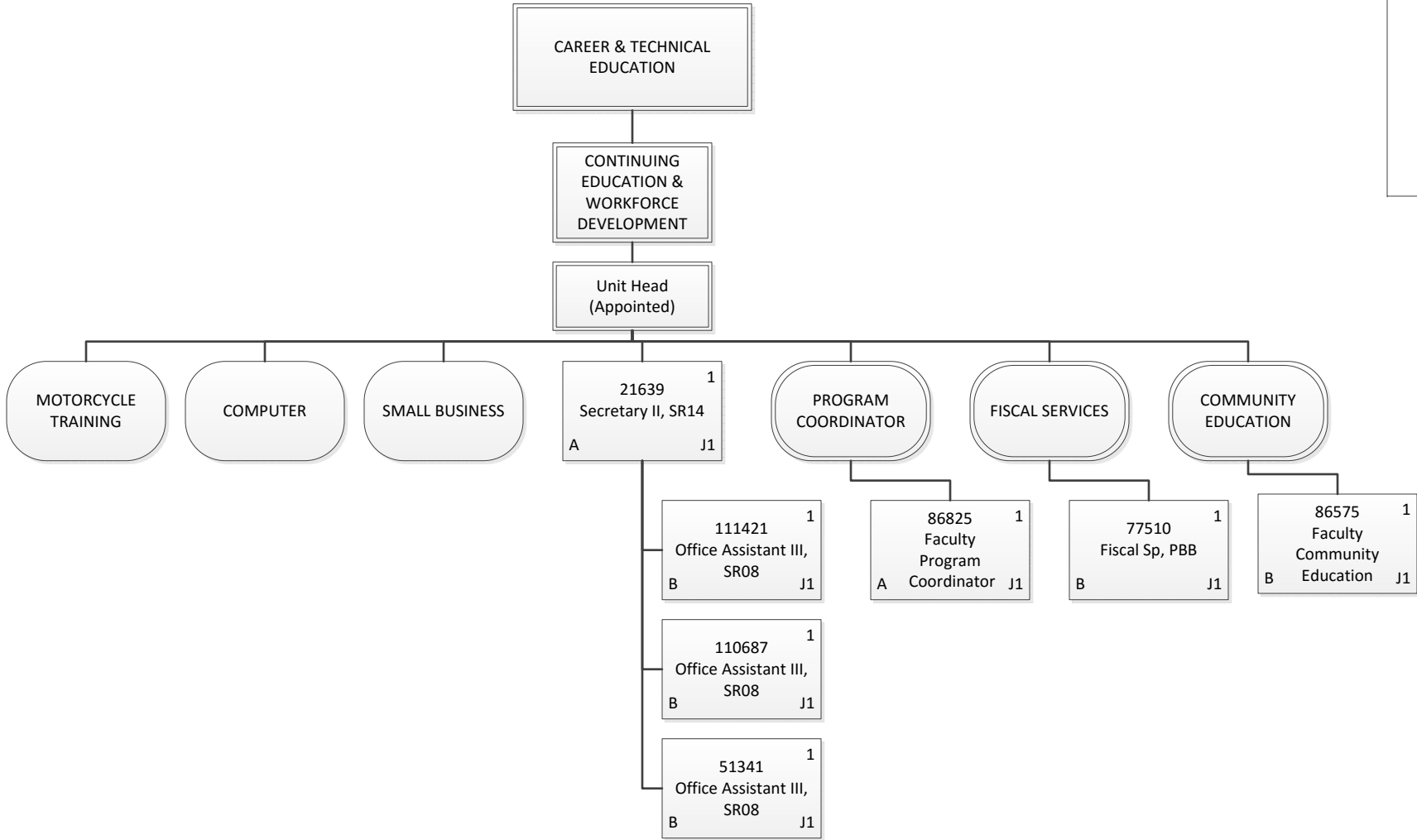
Permanent	22.00
General Fund	18.00
Special Fund	4.00
Grand Total	22.00



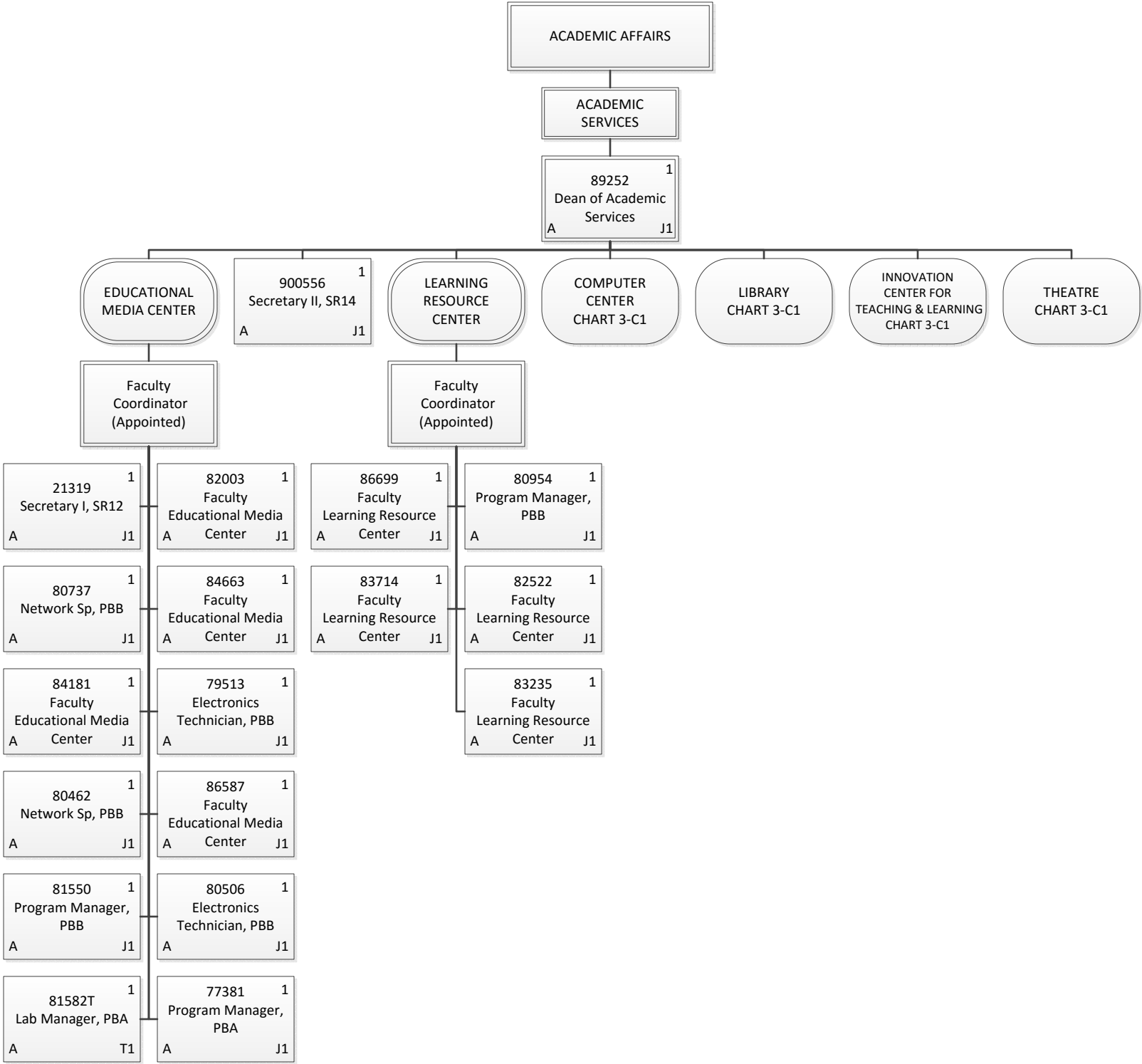
Permanent	15.00
General Fund	15.00
Grand Total	15.00



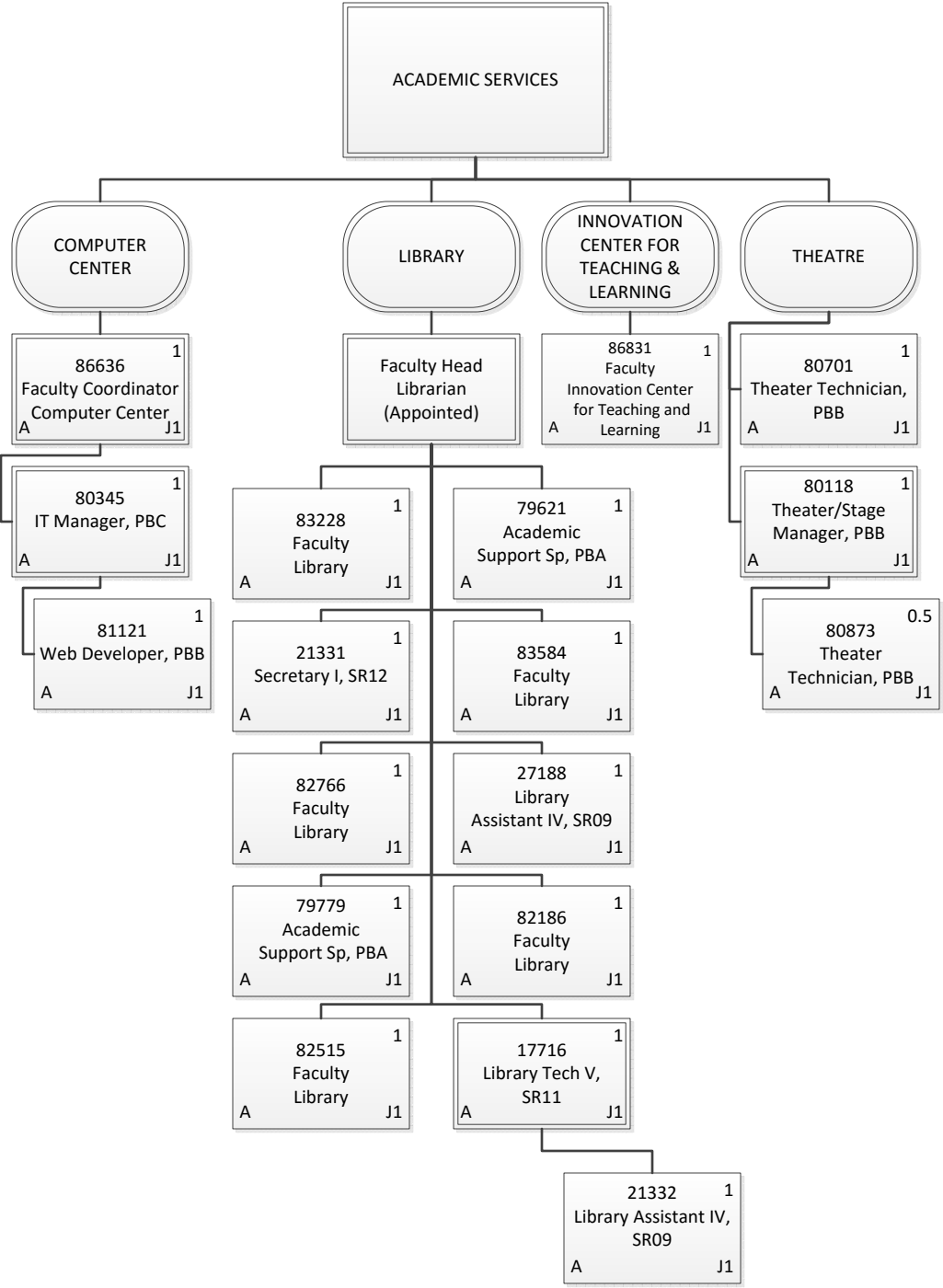
Permanent	13.00
General Fund	13.00
Grand Total	13.00



Permanent	7.00
General Fund	2.00
Special Fund	5.00
Grand Total	7.00



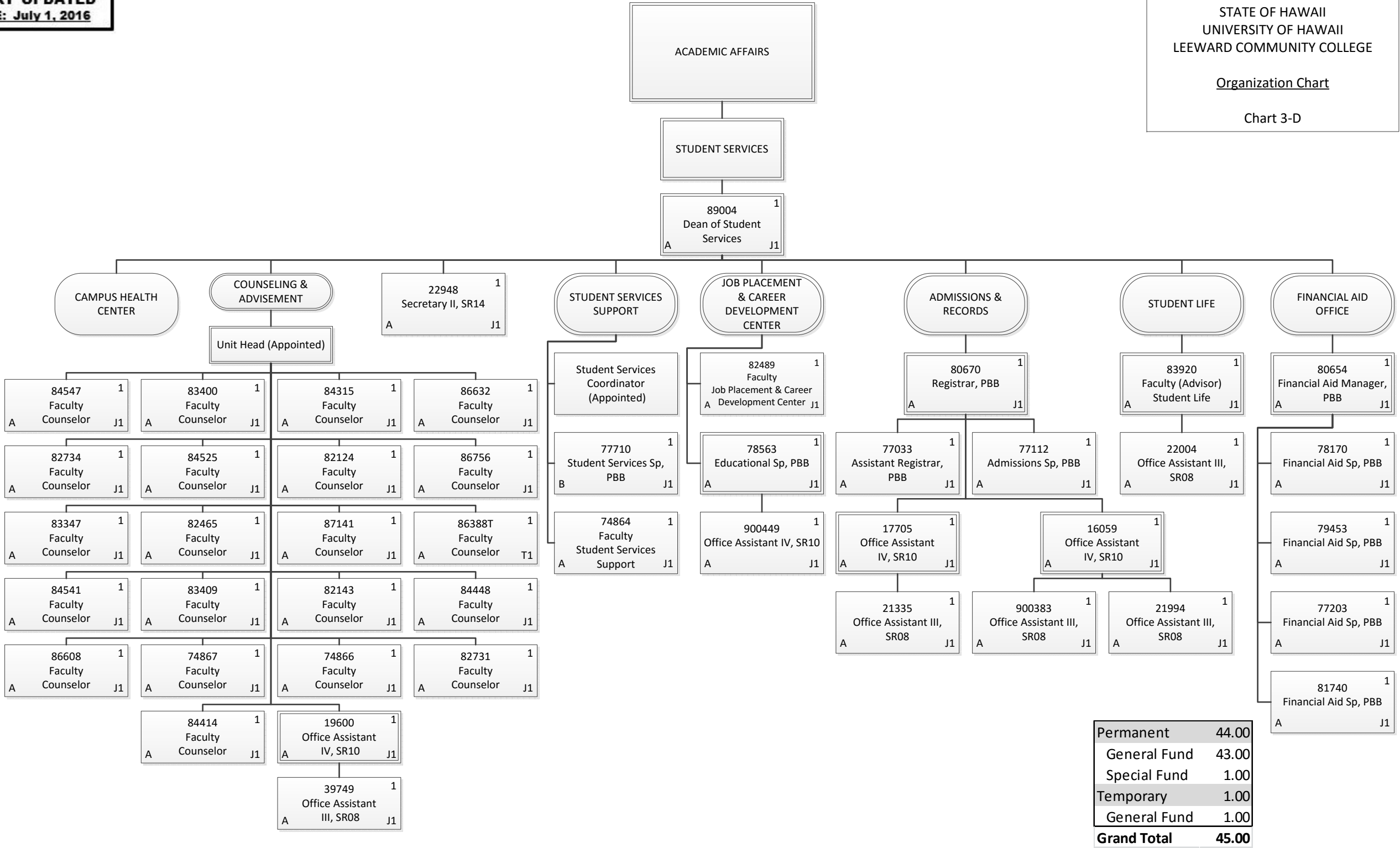
Permanent	18.00
General Fund	18.00
Temporary	1.00
General Fund	1.00
Grand Total	19.00



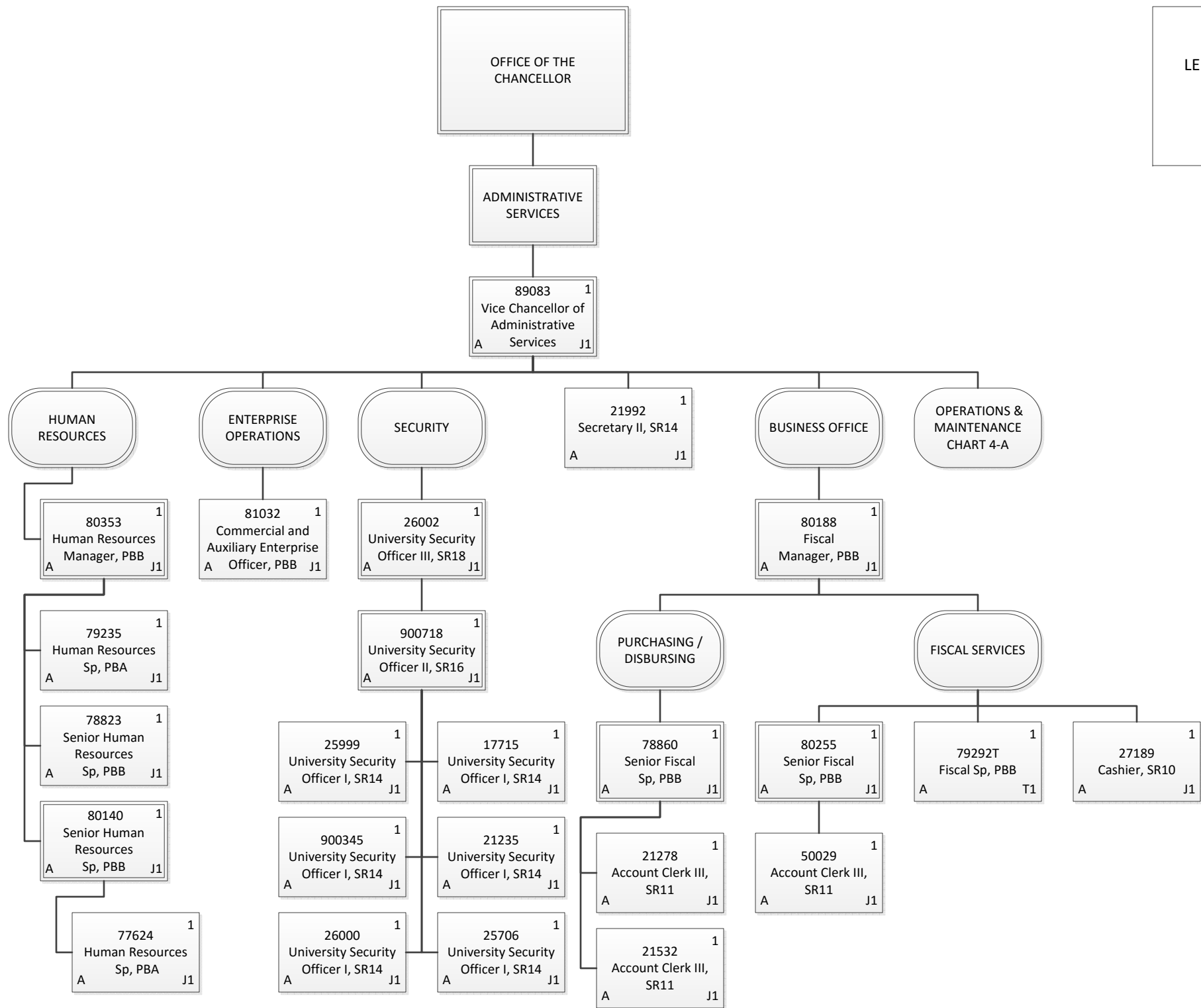
Permanent	17.50
General Fund	17.50
Grand Total	17.50

Organization Chart

Chart 3-D



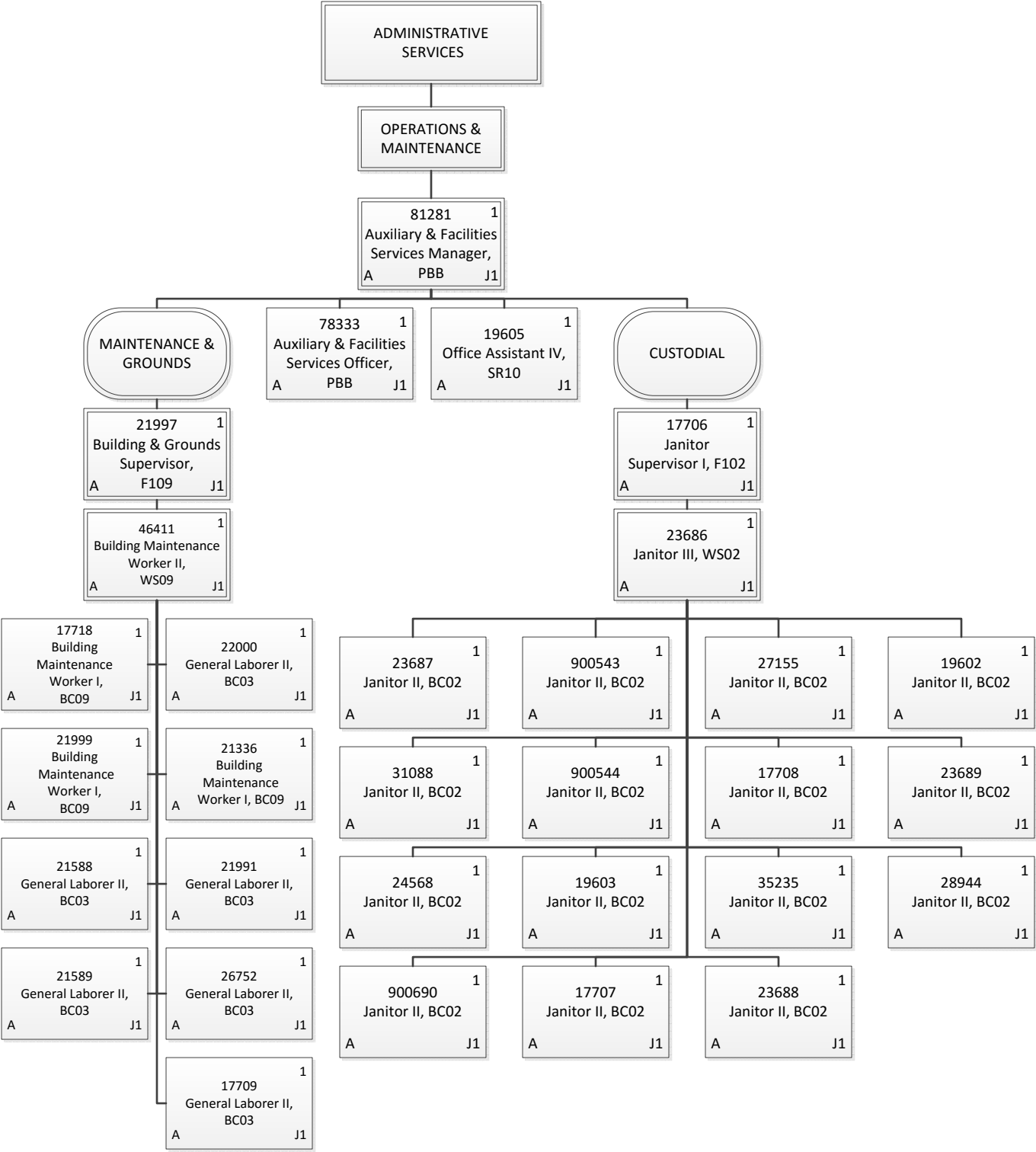




Permanent	23.00
General Fund	23.00
Temporary	1.00
General Fund	1.00
Grand Total	24.00

Organization Chart

Chart 4-A



Permanent	31.00
General Fund	31.00
Grand Total	31.00