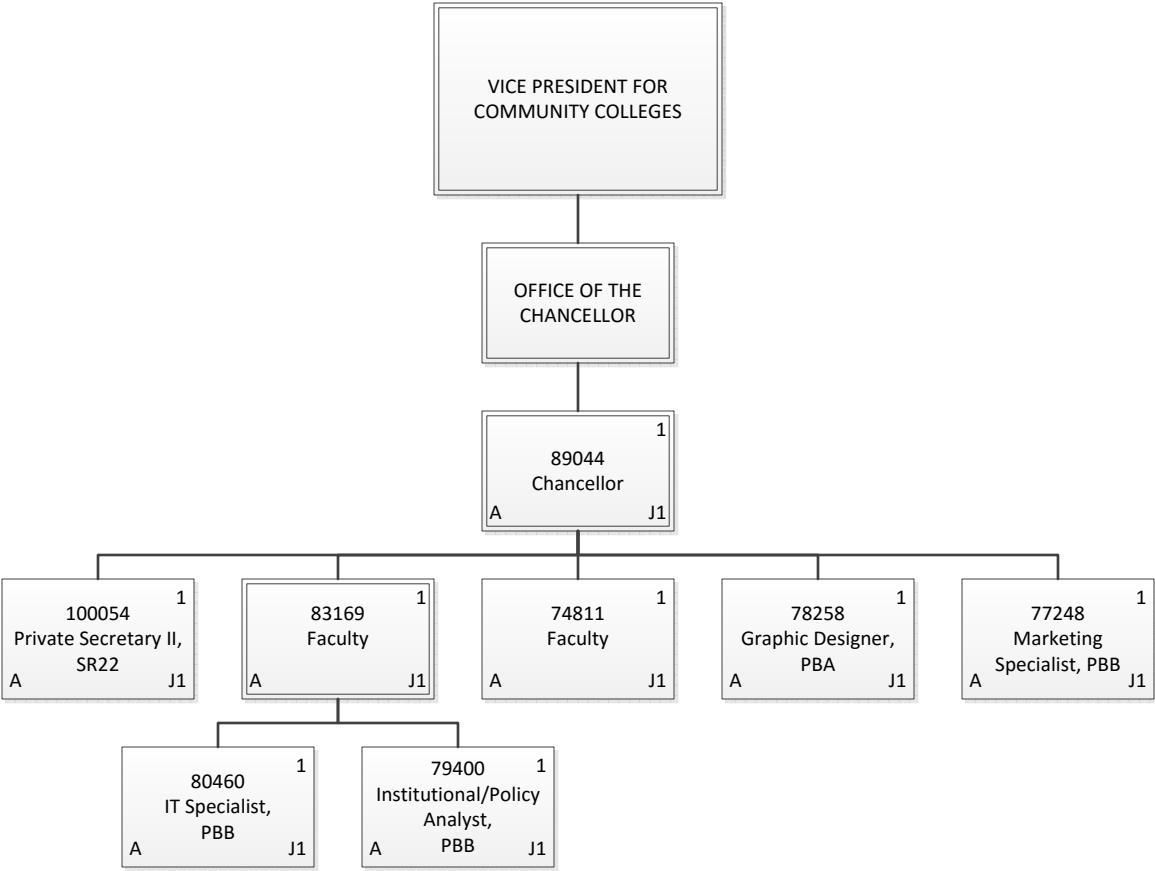


Organization Chart

Chart 1

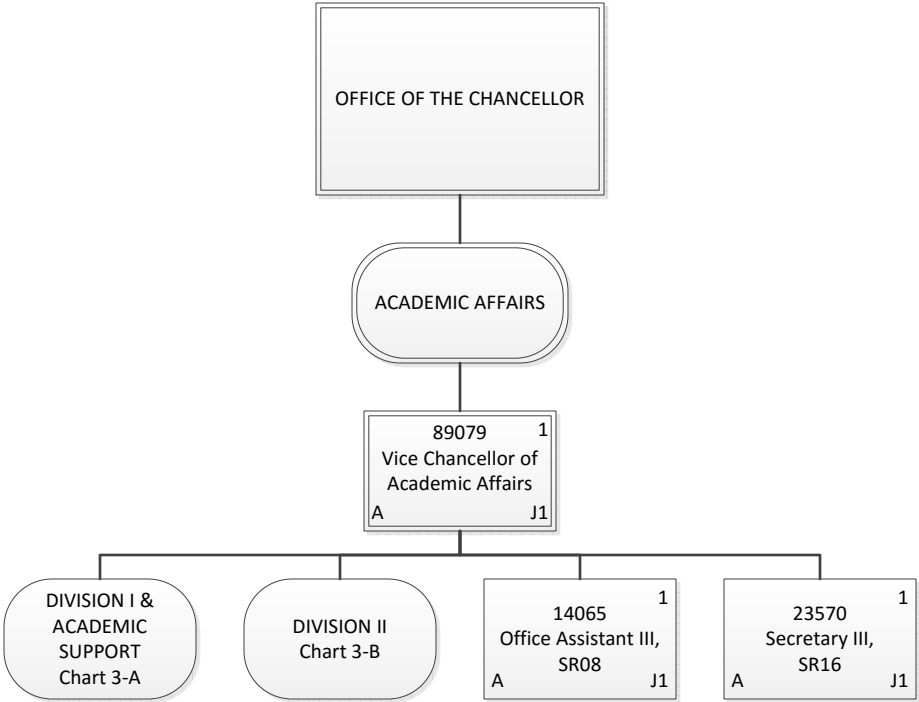
Permanent	153.50
General Fund	153.50
Temporary	5.00
General Fund	5.00
Grand Total	158.50



Permanent	8.00
General Fund	8.00
Grand Total	8.00

Organization Chart

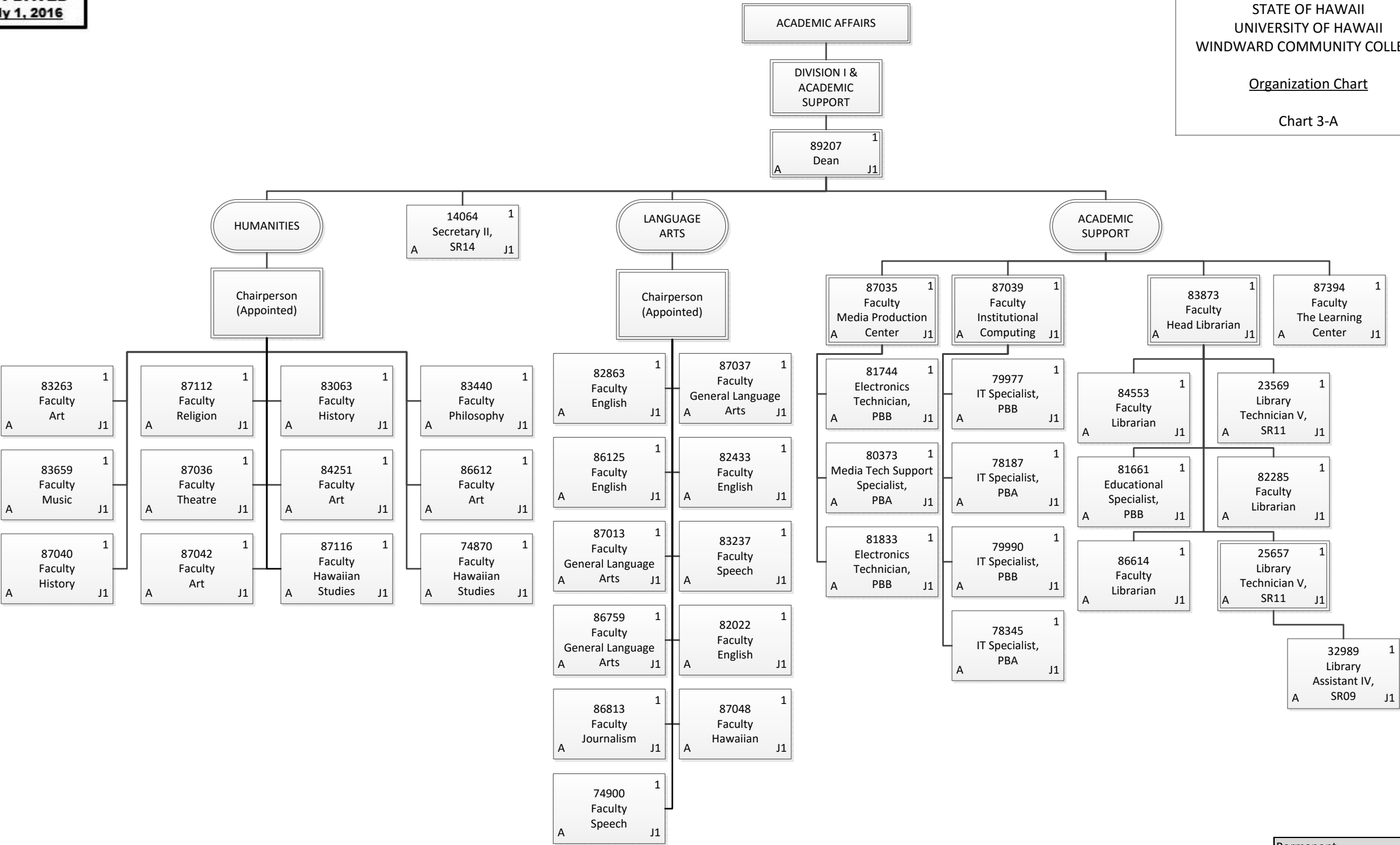
Chart 3



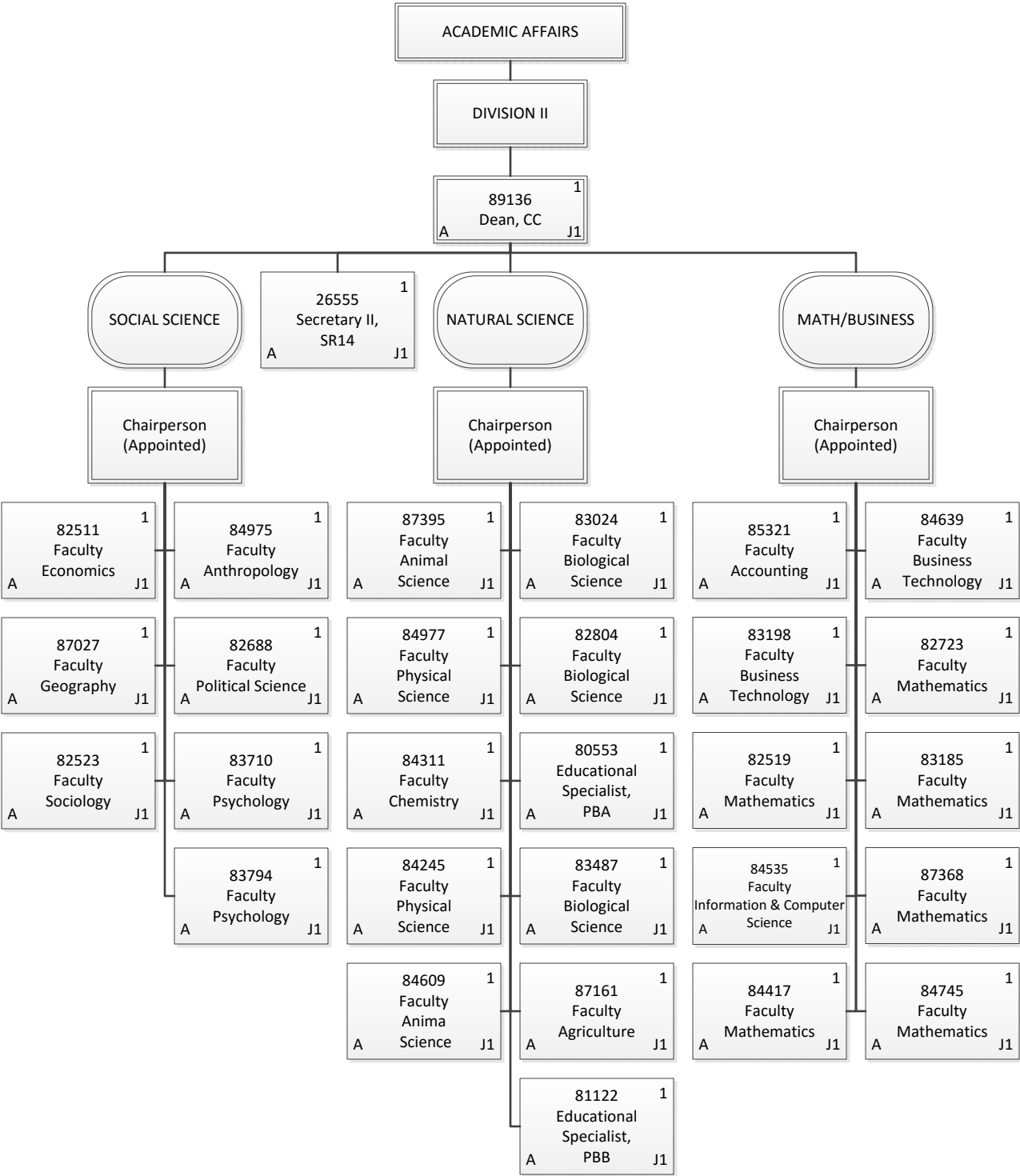
Permanent	3.00
General Fund	3.00
Grand Total	3.00

Organization Chart

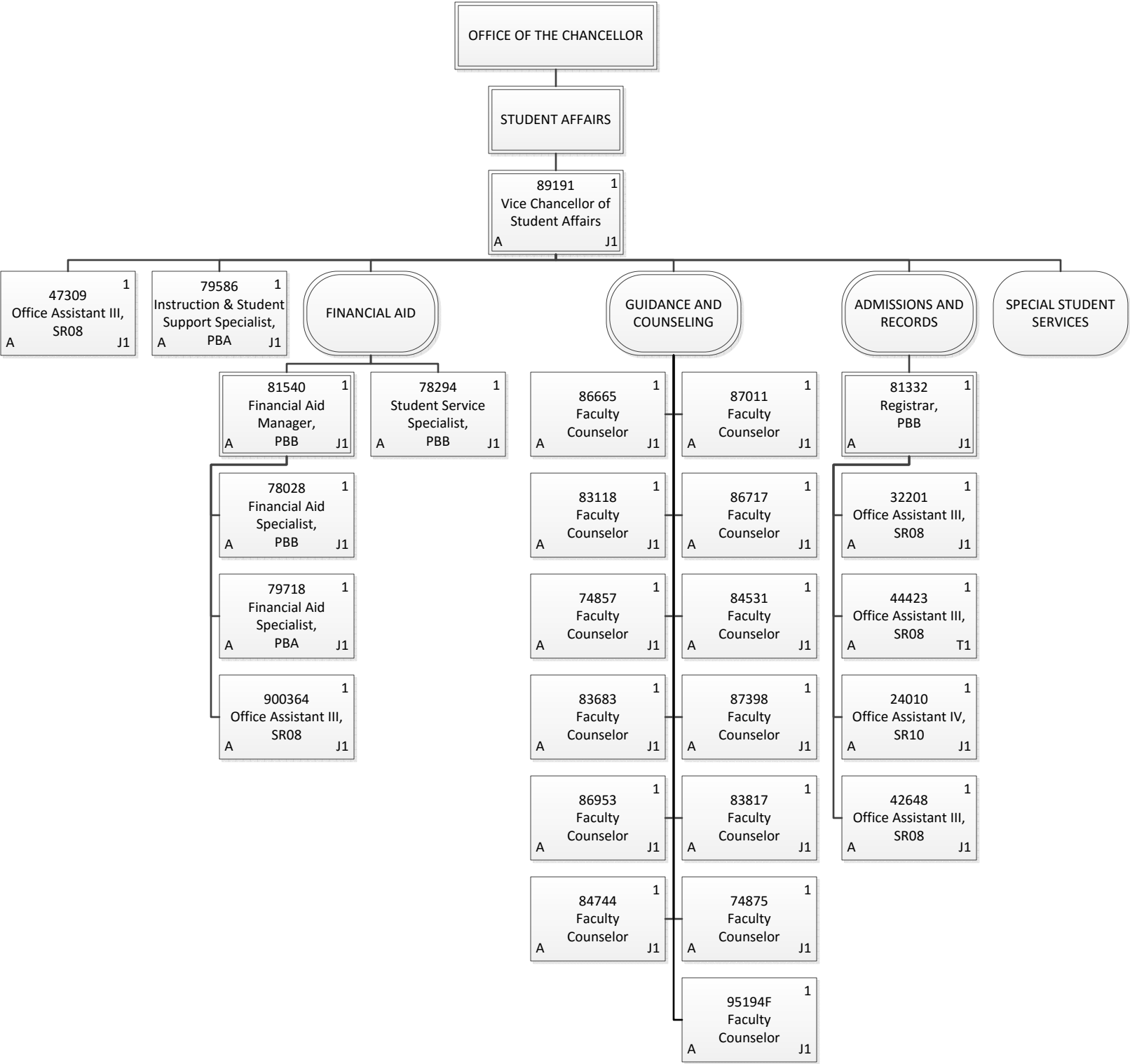
Chart 3-A



Permanent	43.00
General Fund	43.00
Grand Total	43.00



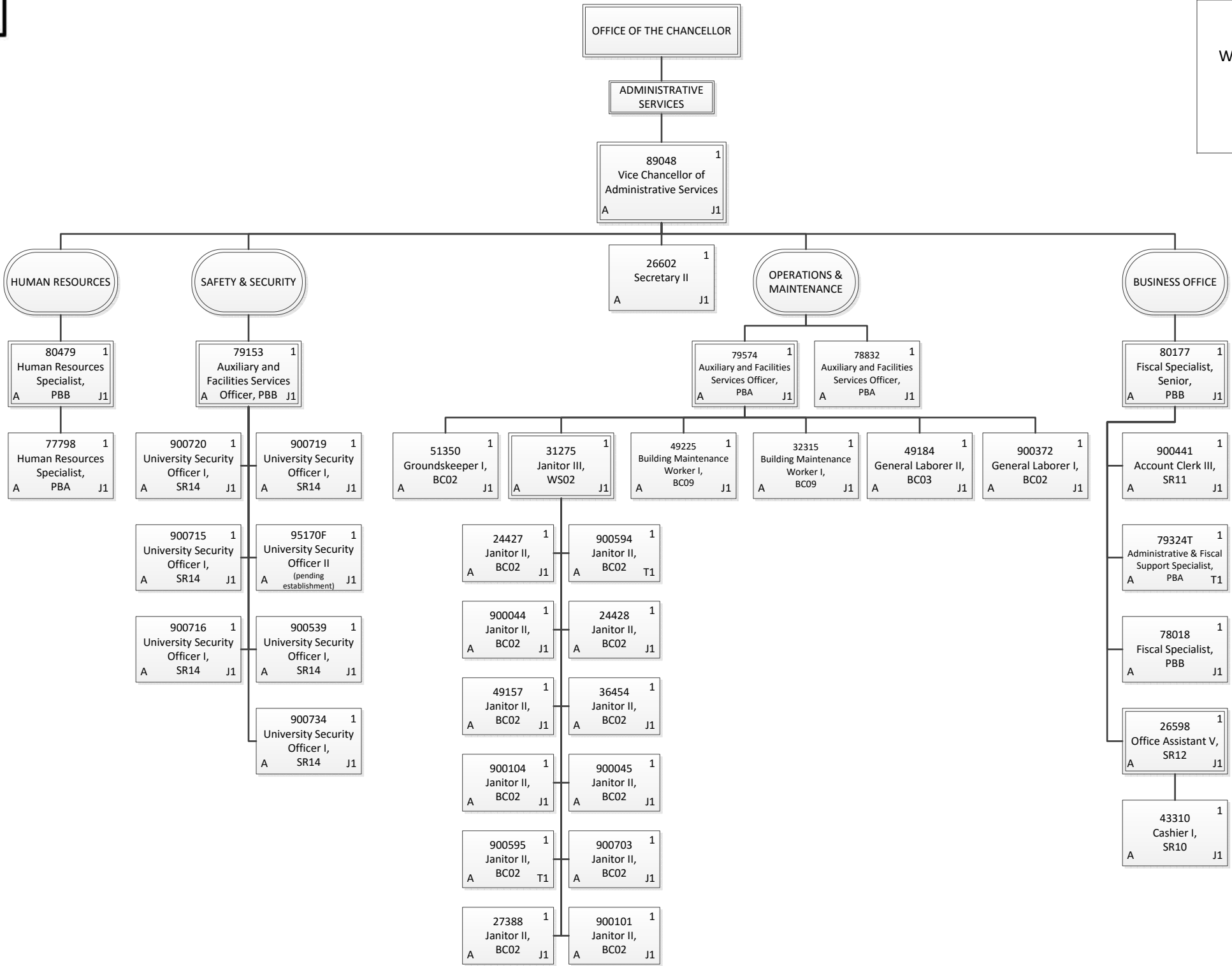
Permanent	30.00
General Fund	30.00
Grand Total	30.00



Permanent	25.00
General Fund	25.00
Temporary	1.00
General Fund	1.00
Grand Total	26.00

Organization Chart

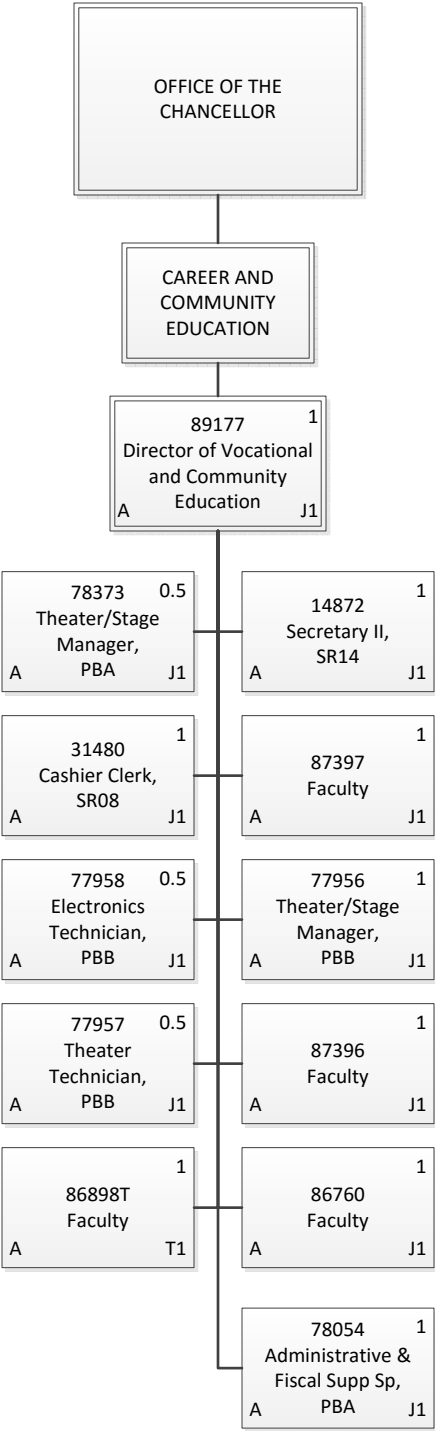
Chart 5



Permanent	35.00
General Fund	35.00
Temporary	3.00
General Fund	3.00
Grand Total	38.00

Organization Chart

Chart 6



Permanent	9.50
General Fund	9.50
Temporary	1.00
General Fund	1.00
Grand Total	10.50