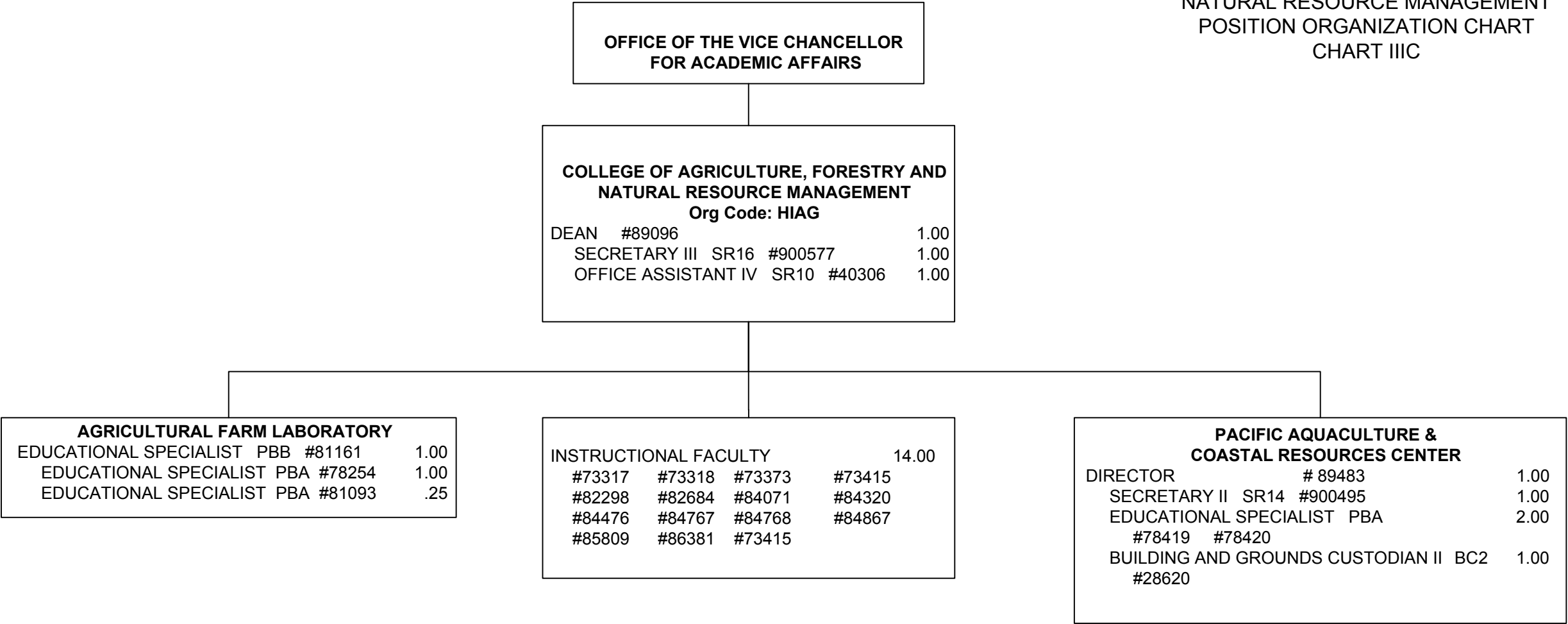
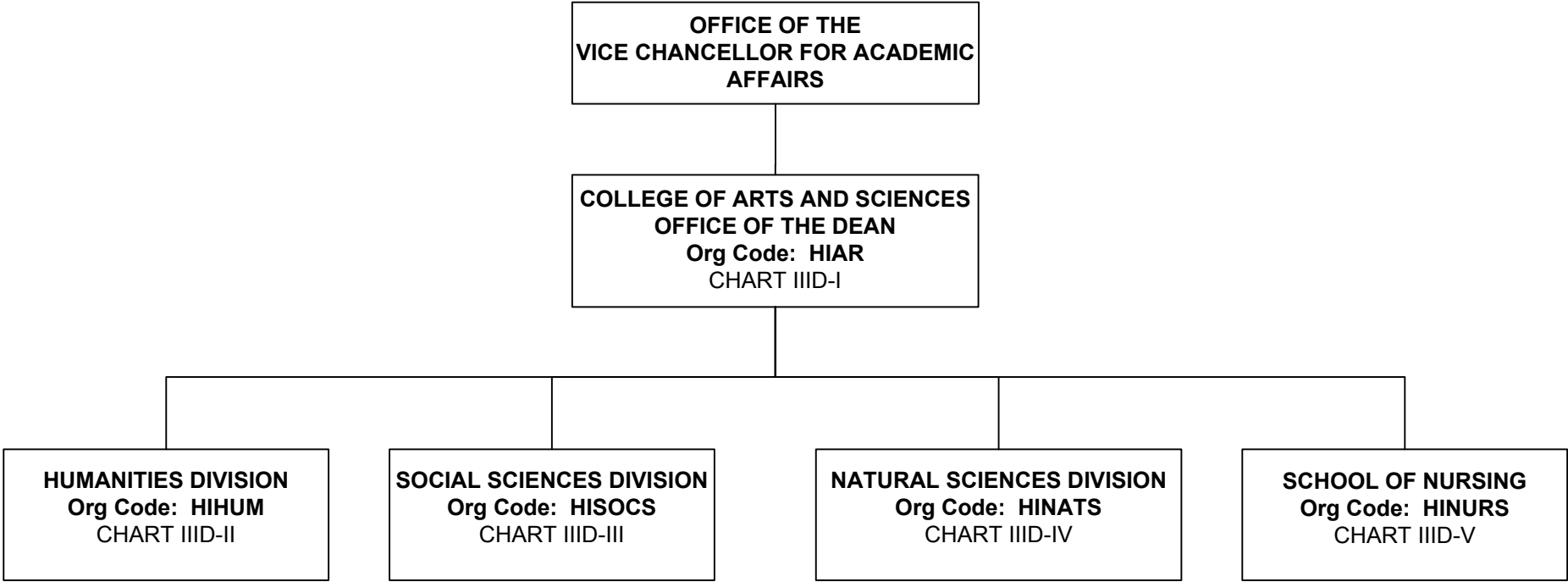
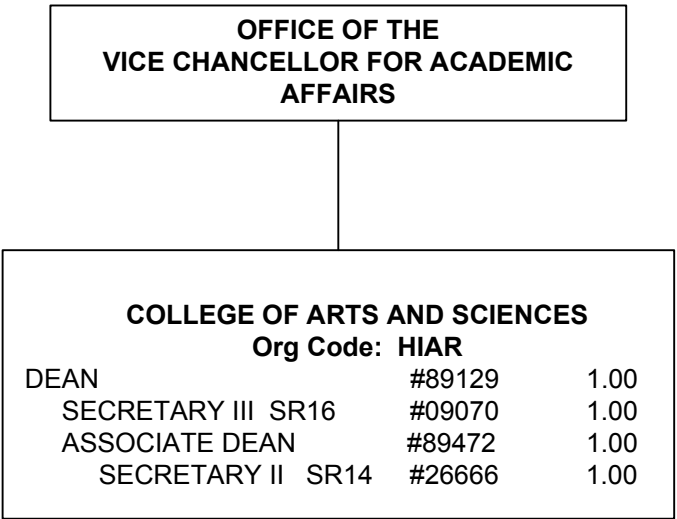


\*General Funds FTE – 1.00 (Auth. Temp.)







COLLEGE OF ARTS AND SCIENCES  
OFFICE OF THE DEAN

HUMANITIES DIVISION			
Org Code: HIHUM			
CHAIR (APPOINTED FROM FACULTY POSITIONS)			
SECRETARY II SR14	#21531		1.00
OFFICE ASSISTANT III SR8	#28618		1.00
ART	Org Code: HIART		
FACULTY: #82001 #82312 #82562 #84604			4.00
ASIAN PACIFIC LANGUAGES	Org Code: HIAPL		
FACULTY: #73407 #82832 #83971 #84038 #86365			5.00
COMMUNICATION	Org Code: HICOM		
FACULTY: #73256 #73343(S) #82764 #82900 #83158			8.00
#83655 #83784 #86411			
ENGLISH	Org Code: HIENG		
FACULTY: #73344(S) #82171 #82553 #82563			6.00
#83928 #84267			
EUROPEAN LANGUAGES FACULTY	Org code: HIEL		
FACULTY: #73346			1.00
LINGUISTICS FACULTY	Org Code: HILING		
			0.00
MUSIC	Org Code: HIMUS		
FACULTY: #82577 #84213 #84511			3.00
THEATER FACULTY:	Org Code: HITHEA		
FACULTY: #82775			1.00
PHILOSOPHY	Org Code: HIPHIL		
FACULTY: #73368(S) #82478 #82654 #84509			4.00
RELIGION	Org code: HIREL		
FACULTY: #82009 #82352			2.00

COLLEGE OF ARTS AND SCIENCES  
OFFICE OF THE DEAN

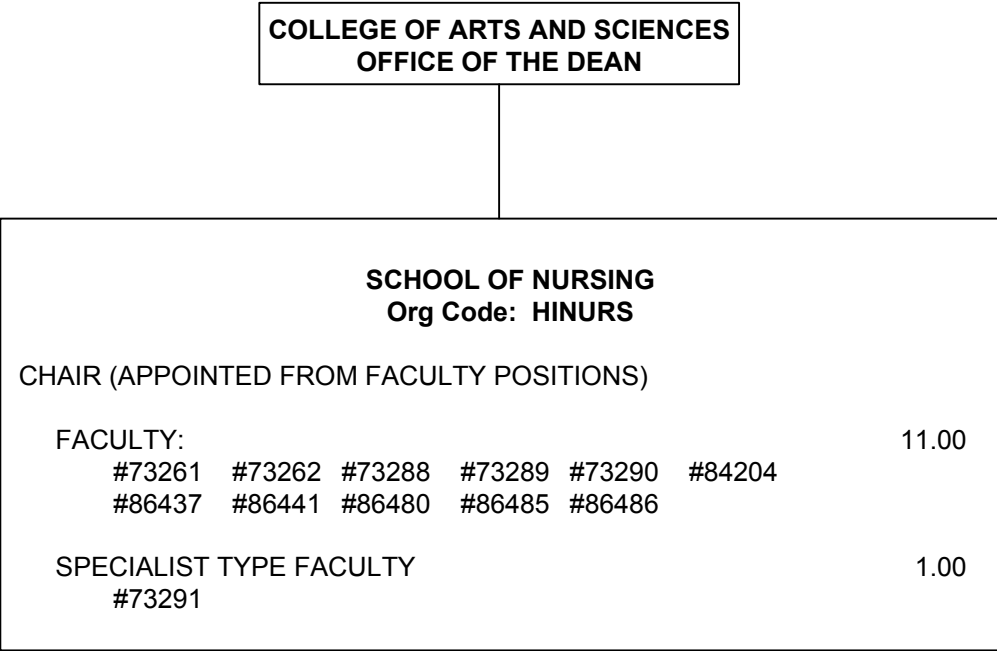
SOCIAL SCIENCES DIVISION					
Org Code: HISOCS					
CHAIR (APPOINTED FROM INSTRUCTIONAL POSITIONS)					
SECRETARY II	SR14	#18550			1.00
OFFICE ASSISTANT III	SR8	#28623			1.00
ANTHROPOLOGY	Org Code: HIANTH				
FACULTY: #73345(S)	#73372	#82214	#82556	#82557	9.00
#83005	#83555	#86481	#99616F(S)@		
EDUCATION	Org Code: HIED				
OFFICE ASSISTANT IV,	SR10	#42269+			1.00
SPECIALIST TYPE FACULTY		#73257+			1.00
FACULTY: #73301	#73464	#82179	#83049		7.00
#83596	#83791	#86541			
GEOGRAPHY	Org Code: HIGEOG				
FACULTY: #82899	#84766	#86404	#86414		4.00
HISTORY	Org Code: HIHIST				
FACULTY: #84198	#84285	#84483	#86360		4.00
HPE	Org Code: HIHPE				
FACULTY: #73367(S)	#73434	#82781	#83614	#84242	7.00
#86416	#87564				
POLITICAL SCIENCE	Org Code: HIPOLS				
FACULTY: #73356(S)	#82309	#82821	#83186	#84855	7.00
#86445	#86450				
PSYCHOLOGY	Org Code: HIPSY				
FACULTY: #73254	#73298	#73362	#82349	#82542	13.00
#82847	#82933	#83107	#83929	#83981	
#86362	#86413	#86417			
SOCIOLOGY	Org Code: HISOC				
FACULTY: #73352	#82169	#84593	#86370	#86488	5.00

@ Pending Establishment  
+ Reports to Department Chair

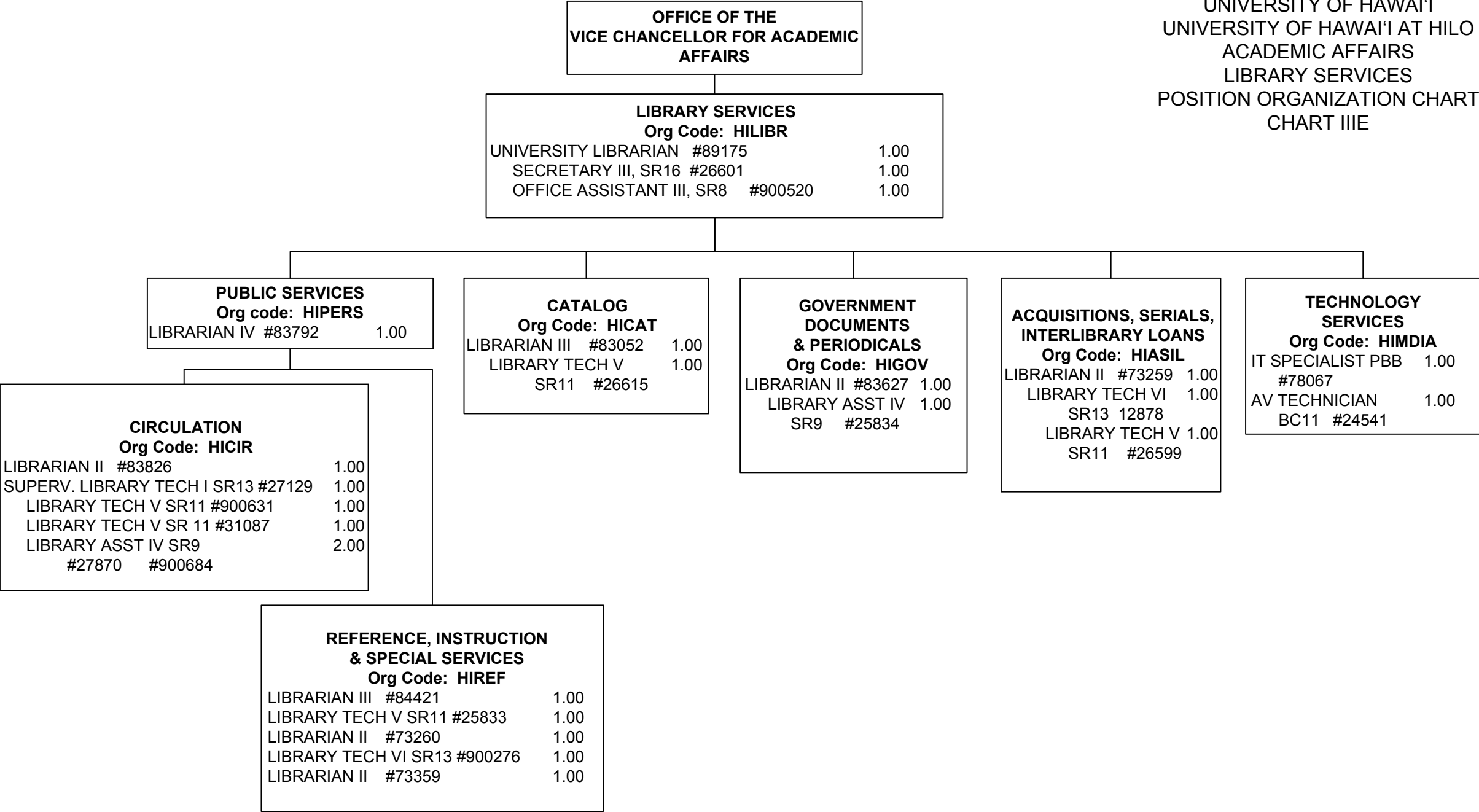


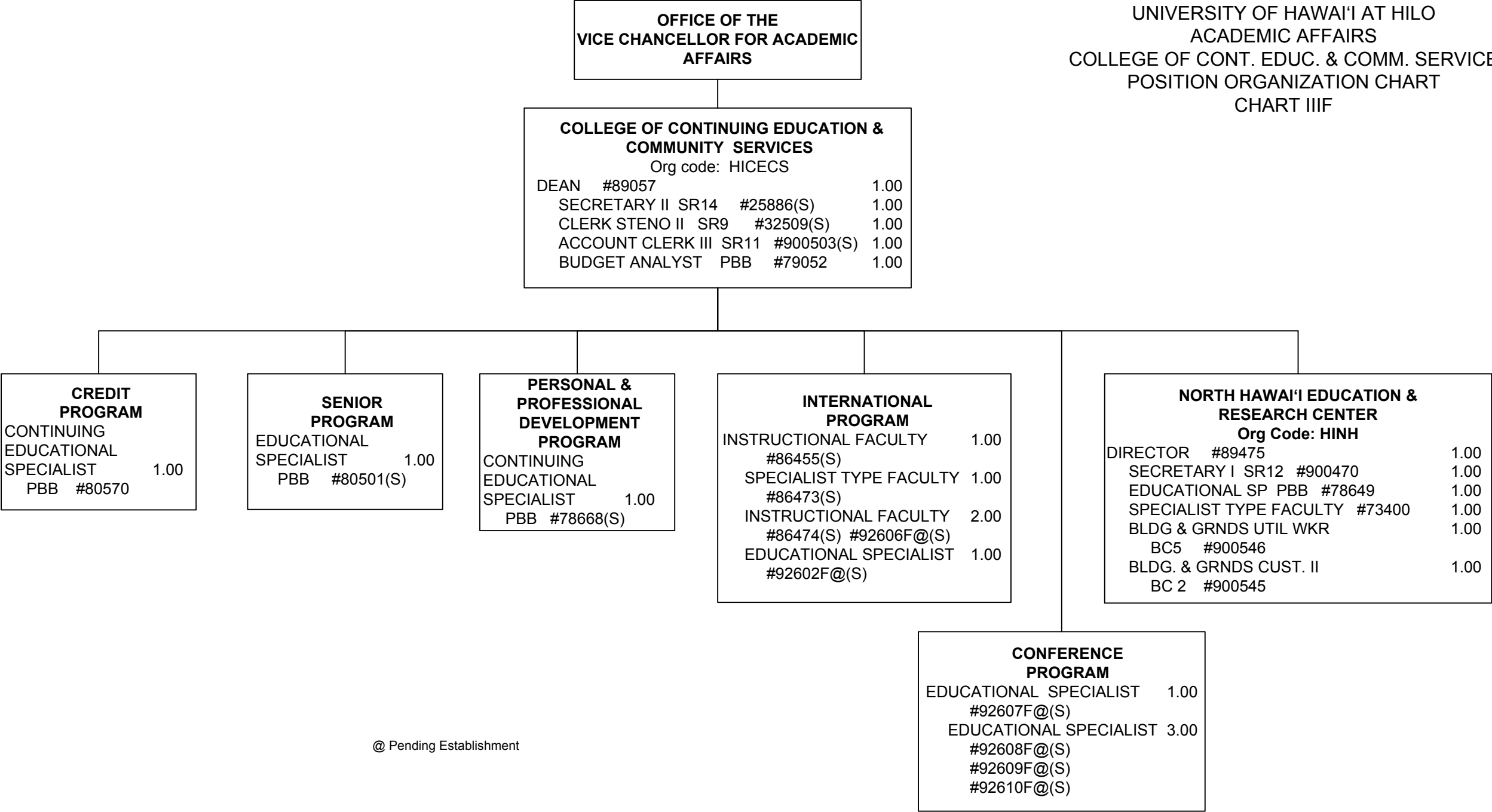
NATURAL SCIENCES DIVISION									
Org Code: HINATS									
CHAIR (APPOINTED FROM FACULTY POSITIONS)									
SECRETARY II SR14		#22484						1.00	
OFFICE ASSISTANT III SR8		#900516		#28622		2.00			
BIOLOGY		Org Code: HIBIOL							
LAB COORDINATOR PBA		#80902+						1.00	
FACULTY: #73299		#73342(S)		#73363		#73404(S)		#73435 #82111 #82322 #82643	
#82909		#83122		#83380		#83424 #83631		#84063 #86408 #99622F(S)@	
CHEMISTRY		Org Code: HICHEM							
LAB COORDINATOR PBA		#80903+						1.00	
FACULTY: #73258		#73340(S)		#73459		#82453		#82551 #82648	
#82915		#84211							
COMPUTER SCIENCE		Org Code: HICSE							
IT SPECIALIST PBB		#78643+						1.00	
FACULTY: #73371		#83269		#83648		#83782		#86449	
GEOLOGY-GEOPHYSICS		Org Code: HIGG							
EDUCATIONAL SPECIALIST PBB		#81750+						1.00	
FACULTY: #82686		#82833		#86412		#87561		4.00	
MATHEMATICS		Org Code: HIMATH							
FACULTY: #73255		#73341(S)		#73461		#73462		#82381 #82801 #83503	
#84068		#86361		#86366		#86382		#86482	
MARINE SCIENCE		Org Code: HIMARE							
EDUCATIONAL SPECIALIST PBB		#78641+		#78835+					
FACULTY: #73348		#82358		#83157		#83187		#83190 #83207 #84233	
#86439		#86483		#86540					
PHYSICS		Org Code: HIPHYS							
EDUCATIONAL SPECIALIST PBB		#80997+						1.00	
FACULTY: #73350		#83033		#83815		#86373		#86535	
#99620F(S)@		1.00							

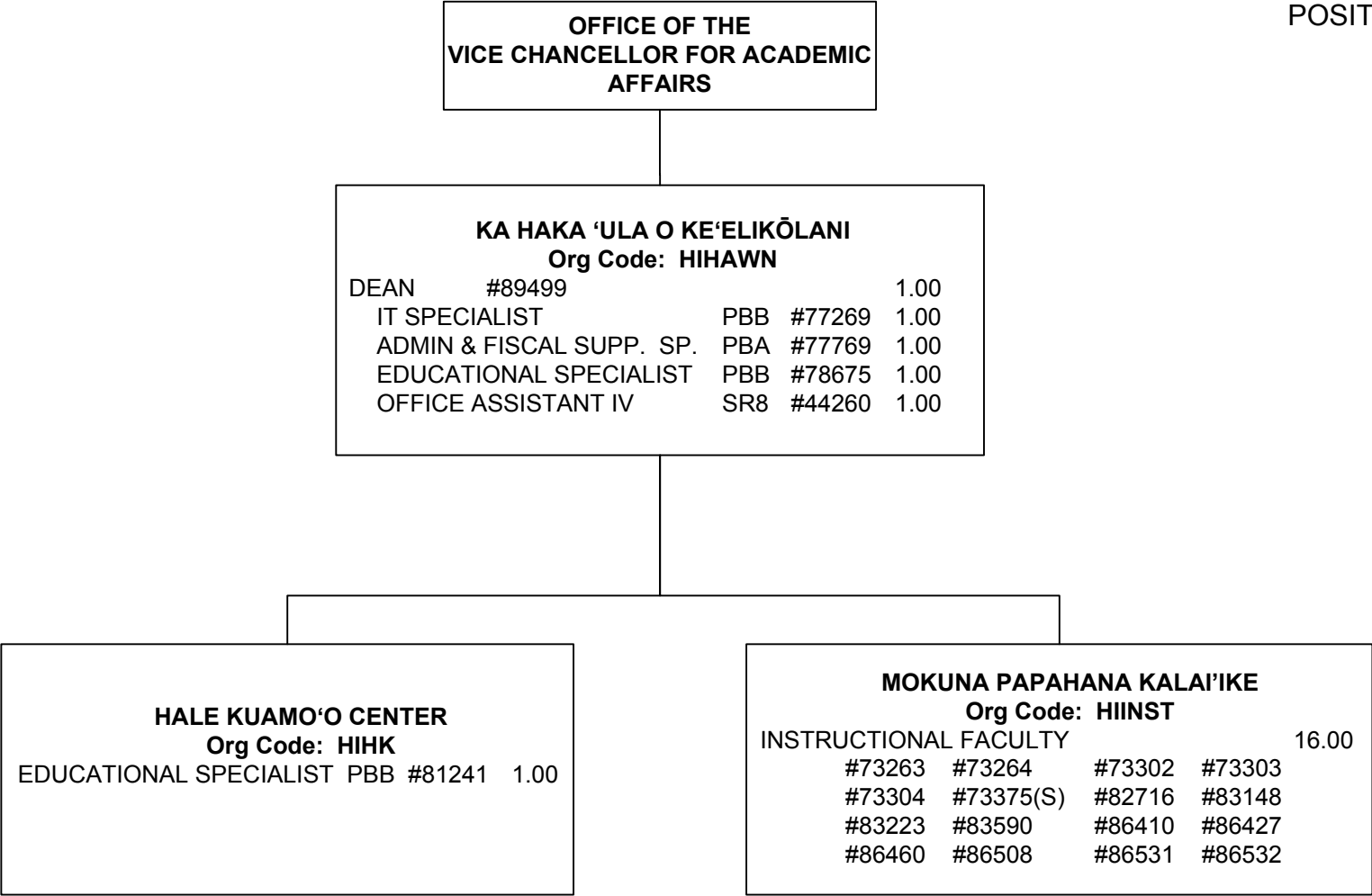
General Funds – 65.00  
Special Funds (S) – 6.00

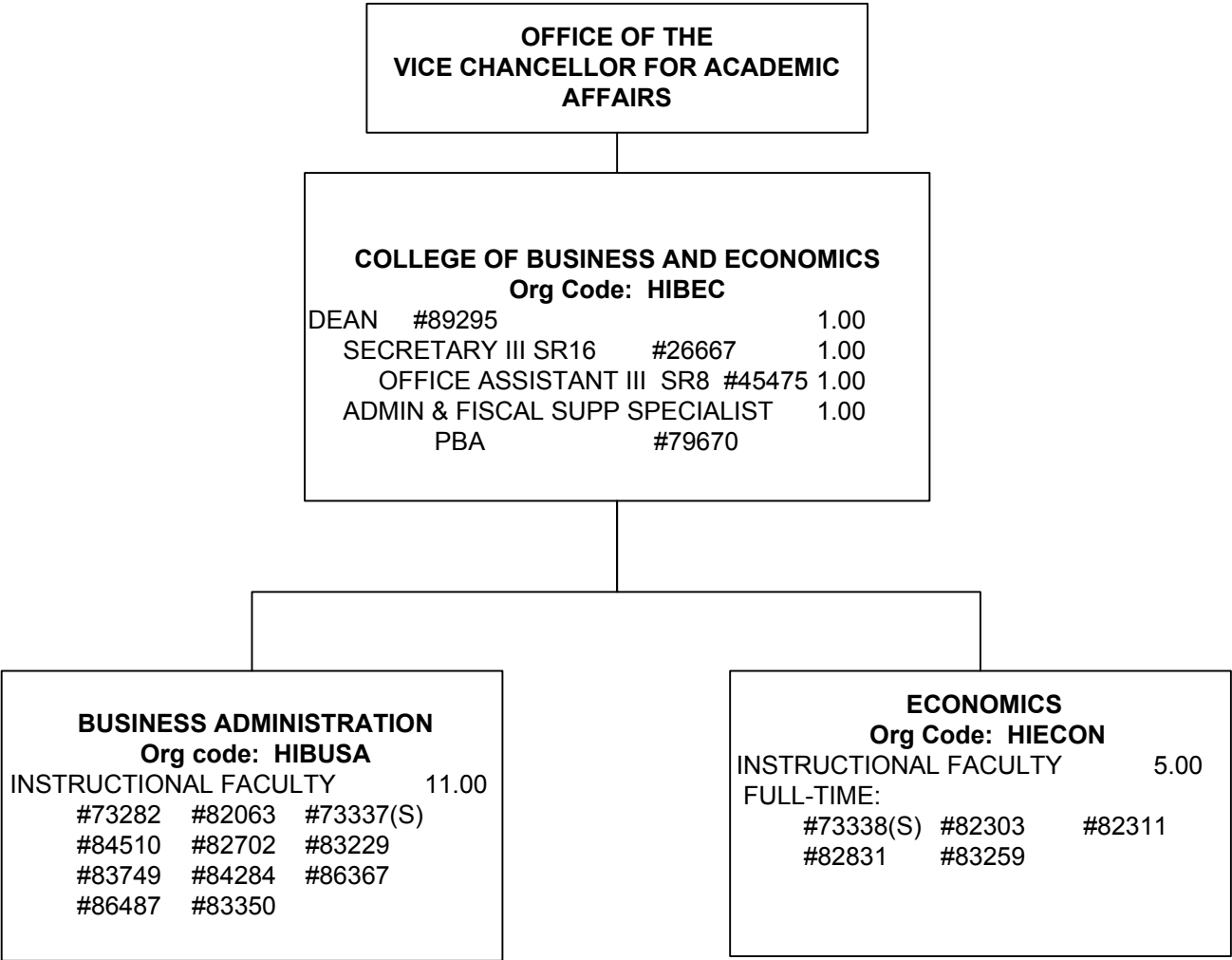


Footnote:  
Specialist Type Faculty #86409 .50



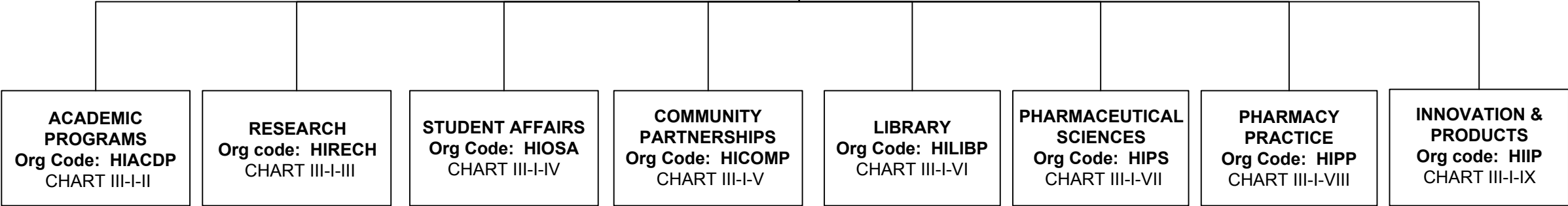






OFFICE OF THE VICE CHANCELLOR  
FOR ACADEMIC AFFAIRS

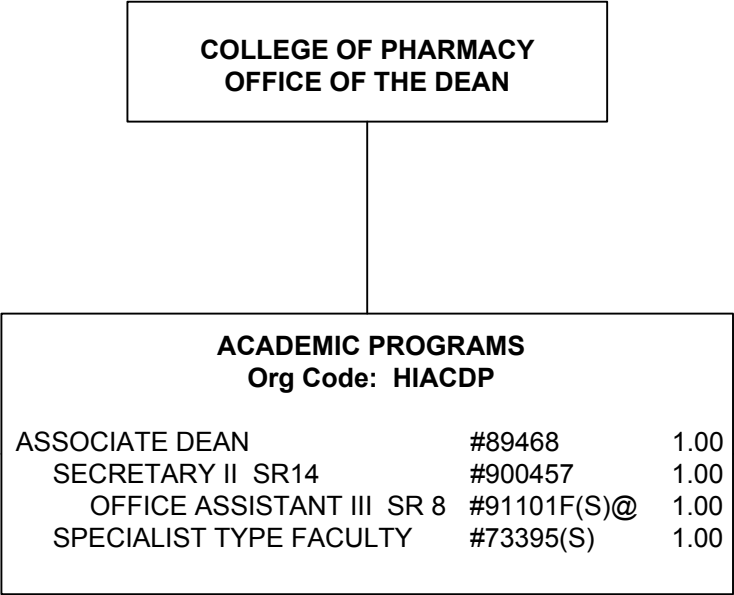
COLLEGE OF PHARMACY  
OFFICE OF THE DEAN  
Org Code: HIPHAR  
CHART III-I-I



OFFICE OF THE VICE CHANCELLOR FOR  
ACADEMIC AFFAIRS

COLLEGE OF PHARMACY				
Org Code: HIPHAR				
DEAN			#89428	1.00
SECRETARY III	SR16		#900293	1.00
OFFICE ASSISTANT III	SR8		#900525(S)	1.00
HUMAN RESOURCES SP	PBB		#79785(S)	1.00
BUDGET MANAGER	PBB		#78533(S)	1.00
ADMIN & FISCAL SUPP SP	PBA			2.00
	#77608(S)	#79128(S)		
IT SPECIALIST	PBB		#79234(S)	1.00
SPECIALIST TYPE FACULTY				2.00
	#73357(S)	#73427		





@ Pending Establishment

