

STATE OF HAWAI'I
UNIVERSITY OF HAWAI'I
UNIVERSITY OF HAWAI'I AT MĀNOA
OFFICE OF THE VICE CHANCELLOR FOR ACADEMIC AFFAIRS
COLLEGE OF ARTS AND SCIENCES
COLLEGE OF ARTS AND HUMANITIES
Organization Chart
Chart I

DEPARTMENT TOTAL: PERM TEMP
General Funds: 204.25 3.00

ADMINISTRATIVE SERVICES
Org Code: MAASAH

Admin Svcs Manager, PBC, #808281.00
Admin Officer, PBB
#78625, #812282.00
Admin Officer, PBA, #777151.00
HR Spec, PBB, #783131.00
HR Spec, PBA, #798111.00
Personnel Clerk IV, SR-11, #392271.00

CHART TOTAL: PERM TEMP
General Funds: 11.00 - -

COLLEGE OF ARTS AND HUMANITIES
OFFICE OF THE DEAN

DEPARTMENT OF AMERICAN STUDIES
Org Code: MAAMST

Chair (appointed from Instructional Faculty)	
Secretary II, SR-14, #13893	1.00
Student Svcs Spec, PBB, #79371	1.00
Instructional Faculty:	14.00
#82030, #82071, #82091, #82176, #82524, #82533, #82547, #82907, #83461, #83568, #83812, #84008, #84156, #84596	
Graduate Asst, #82180T	0.50T

STATE OF HAWAII
UNIVERSITY OF HAWAII
UNIVERSITY OF HAWAII AT MĀNOA
COLLEGE OF ARTS AND SCIENCES
COLLEGE OF ARTS AND HUMANITIES
Organization Chart
Chart II-A

CHART TOTAL:	PERM	TEMP
General Funds:	16.00	0.50

COLLEGE OF ARTS AND HUMANITIES
OFFICE OF THE DEAN

STATE OF HAWAI'I
UNIVERSITY OF HAWAI'I
UNIVERSITY OF HAWAI'I AT MĀNOA
COLLEGE OF ARTS AND SCIENCES
COLLEGE OF ARTS AND HUMANITIES
Organization Chart
Chart II-B

DEPARTMENT OF ART AND ART HISTORY		
Org Code: MAARTH		
Chair (appointed from Instructional Faculty)		
Secretary II, SR-14, #11068		1.00
Office Asst III, SR-08, #14366		1.00
Account Clerk II, SR-08, #47617		1.00
Educational Spec, PBB:		5.00
#80499, #80523, #80667, #80726, #81319		
Machinist, PBB, #81041		1.00
Associate Chair (appointed from Instructional Faculty)		
Specialist Type Faculty, #83222		1.00
Instructional Faculty:		19.00
#82067, #82142, #82187, #82275, #82445,		
#82501, #82583, #82584, #82886, #82995,		
#83230, #83315, #83323, #83588, #83752,		
#83956, #84050, #84232, #84464		
Graduate Asst:		3.00
#82514, #82601, #88120, #88152, #88242,		
#88456, #82136T		

COLLEGE OF ARTS AND HUMANITIES
OFFICE OF THE DEAN

DEPARTMENT OF HISTORY Org Code: MAHIST		
Chair (appointed from Instructional Faculty) Student Svcs Spec, PBA, #78140		1.00
Associate Chair (appointed from Instructional Faculty) Secretary I, SR-12, #15261		1.00
Director of World Civilizations Program (appointed from Instructional Faculty)		
Instructional Faculty:		29.00
#82025, #82044, #82147, #82164, #82191, #82370, #82428, #82475, #82612, #82655, #83010, #83318, #83322, #83415, #83576, #83676, #83754, #83989, #84155, #84161, #84241, #84333, #84415, #84432, #84461, #84524, #84794, #84839, #85448		
Graduate Asst:		2.50
#88030, #88323, #88329, #88342, #88547		

STATE OF HAWAI'I
UNIVERSITY OF HAWAI'I
UNIVERSITY OF HAWAI'I AT MĀNOA
COLLEGE OF ARTS AND SCIENCES
COLLEGE OF ARTS AND HUMANITIES
Organization Chart
Chart II-C

COLLEGE OF ARTS AND HUMANITIES
OFFICE OF THE DEAN

STATE OF HAWAII
UNIVERSITY OF HAWAII
UNIVERSITY OF HAWAII AT MĀNOA
COLLEGE OF ARTS AND SCIENCES
COLLEGE OF ARTS AND HUMANITIES
Organization Chart
Chart II-D

DEPARTMENT OF MUSIC
Org Code: MAMUS

Chair (appointed from Instructional Faculty)	
Secretary II, SR-14, #11959	1.00
Educational Spec, PBB:	1.50
#80381, #80866 (0.50)	
Admin & Fiscal Support Spec, PBA, #81033	1.00
Educational Spec, PBA, #81965	1.00
Associate Chair (appointed from Instructional Faculty)	
Instructional Faculty:	21.00
#82213, #82401, #82438, #82592, #82739,	
#82752, #82818, #82836, #82948, #83048,	
#83284, #83361, #83454, #83686, #84061,	
#84295, #84387, #84406, #84442, #84635,	
#85088	
Graduate Asst:	3.00
#88019, #88136, #88237, #88265, #88283,	
#88603	

CHART TOTAL:	PERM	TEMP
General Funds:	28.50	--

COLLEGE OF ARTS AND HUMANITIES
OFFICE OF THE DEAN

STATE OF HAWAII
UNIVERSITY OF HAWAII
UNIVERSITY OF HAWAII AT MĀNOA
COLLEGE OF ARTS AND SCIENCES
COLLEGE OF ARTS AND HUMANITIES
Organization Chart
Chart II-E

DEPARTMENT OF PHILOSOPHY
Org Code: MAPHIL

Chair (appointed from Instructional Faculty)	
Secretary II, SR-14, #12857	1.00
Office Asst III, SR-08, #15263	1.00
Editor, PBA, #79339	0.75
Specialist Type Faculty, #82014	
	1.00
Instructional Faculty:	
	12.00
#82156, #82325, #82350, #82474, #82558, #82877, #83165, #83316, #83528, #83554, #83663, #84419	
Graduate Asst:	
	2.50
#88184, #88213, #88388, #88487, #88507, #82132T	
	0.50T

CHART TOTAL:	PERM	TEMP
General Funds:	18.25	0.50

COLLEGE OF ARTS AND HUMANITIES
OFFICE OF THE DEAN

STATE OF HAWAII
UNIVERSITY OF HAWAII
UNIVERSITY OF HAWAII AT MĀNOA
COLLEGE OF ARTS AND SCIENCES
COLLEGE OF ARTS AND HUMANITIES
Organization Chart
Chart II-F

DEPARTMENT OF RELIGION
Org Code: MAREL

Chair (appointed from Instructional Faculty)	
Secretary II, SR-14, #15012	1.00
Instructional Faculty:	8.00
#82065, #82203, #82205, #82340, #83501	
#84056, #84089, #84168	
Graduate Asst:	3.50
#82189, #82590, #88026, #88084, #88093,	0.50T
#88282, #88556, #82123T	

CHART TOTAL:	PERM	TEMP
General Funds:	12.50	0.50

COLLEGE OF ARTS AND HUMANITIES
OFFICE OF THE DEAN

DEPARTMENT OF COMMUNICOLOGY		
Org Code: MASP		
Chair (appointed from instructional faculty)		
Secretary II, SR-14, #6732		1.00
Office Asst III, SR-08, #35122		1.00
Instructional Faculty:		9.00
#82158, #82237, #82375, #82437, #82596,		
#83777, #82504, #84579, #84859		
Graduate Asst:		1.50
#82525, #82526, #82604, #82119T		0.50T

STATE OF HAWAI'I
UNIVERSITY OF HAWAI'I
UNIVERSITY OF HAWAI'I AT MĀNOA
COLLEGE OF ARTS AND SCIENCES
COLLEGE OF ARTS AND HUMANITIES
Organization Chart
Chart II-G

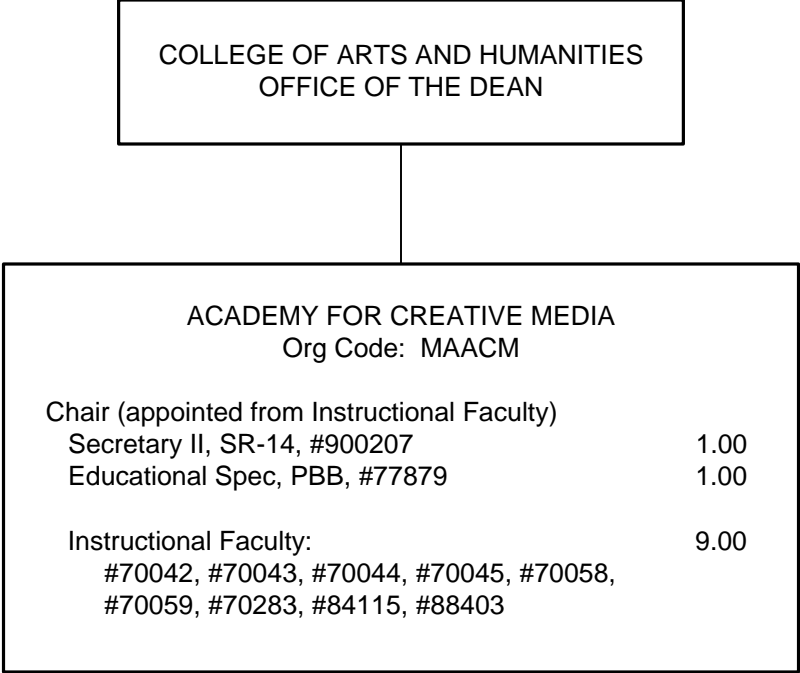
COLLEGE OF ARTS AND HUMANITIES
OFFICE OF THE DEAN

STATE OF HAWAII
UNIVERSITY OF HAWAII
UNIVERSITY OF HAWAII AT MĀNOA
COLLEGE OF ARTS AND SCIENCES
COLLEGE OF ARTS AND HUMANITIES
Organization Chart
Chart II-H

DEPARTMENT OF THEATRE AND DANCE
Org Code: MATD

Chair (appointed from Instructional Faculty)	
Secretary II, SR-14, #13647	1.00
Theater/Stage Manager, PBB, #80119	1.00
Theater Technician, PBB: #78466, #80700, #81269	3.00
Director of Dance Program (appointed from Instructional Faculty)	
Secretary I, SR-12, #19027	1.00
Instructional Faculty:	17.00
#82110, #82161, #82227, #82234, #82260, #82302, #82640, #83250, #83252, #83337, #83436, #83439, #83591, #84095, #84434, #84574, #84678	
Graduate Asst:	6.00
#82419, #82549, #82568, #88000, #88051, #88052, #88053, #88127, #88207, #88211, #88246, #88324, #82117T	0.50T

CHART TOTAL:	PERM	TEMP
General Funds:	29.00	0.50



STATE OF HAWAII
UNIVERSITY OF HAWAII
UNIVERSITY OF HAWAII AT MANOA
COLLEGE OF ARTS AND SCIENCES
COLLEGE OF ARTS AND HUMANITIES
Organization Chart
Chart II-I