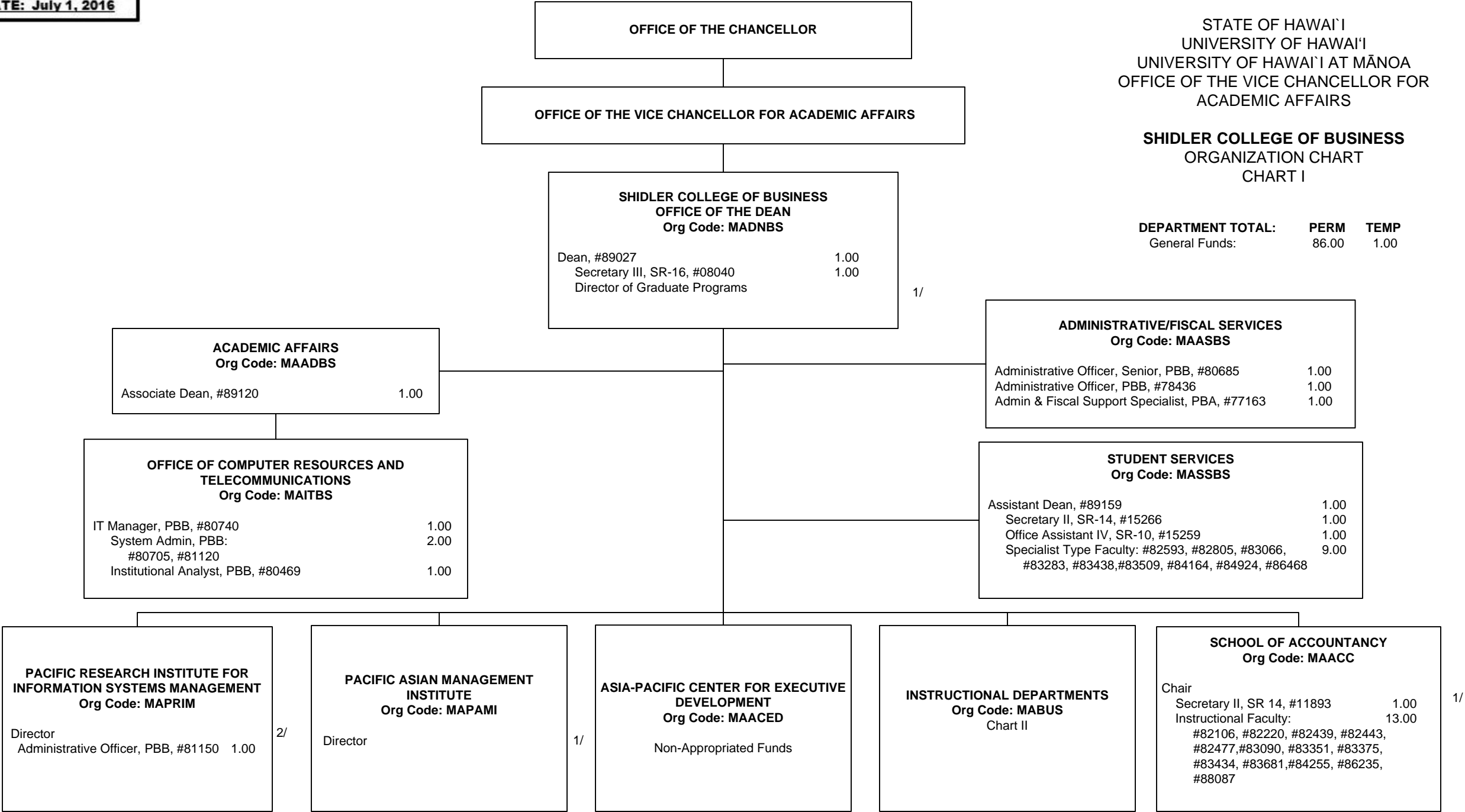


STATE OF HAWAI'I
UNIVERSITY OF HAWAI'I
UNIVERSITY OF HAWAI'I AT MĀNOA
OFFICE OF THE VICE CHANCELLOR FOR
ACADEMIC AFFAIRS

SHIDLER COLLEGE OF BUSINESS
ORGANIZATION CHART
CHART I

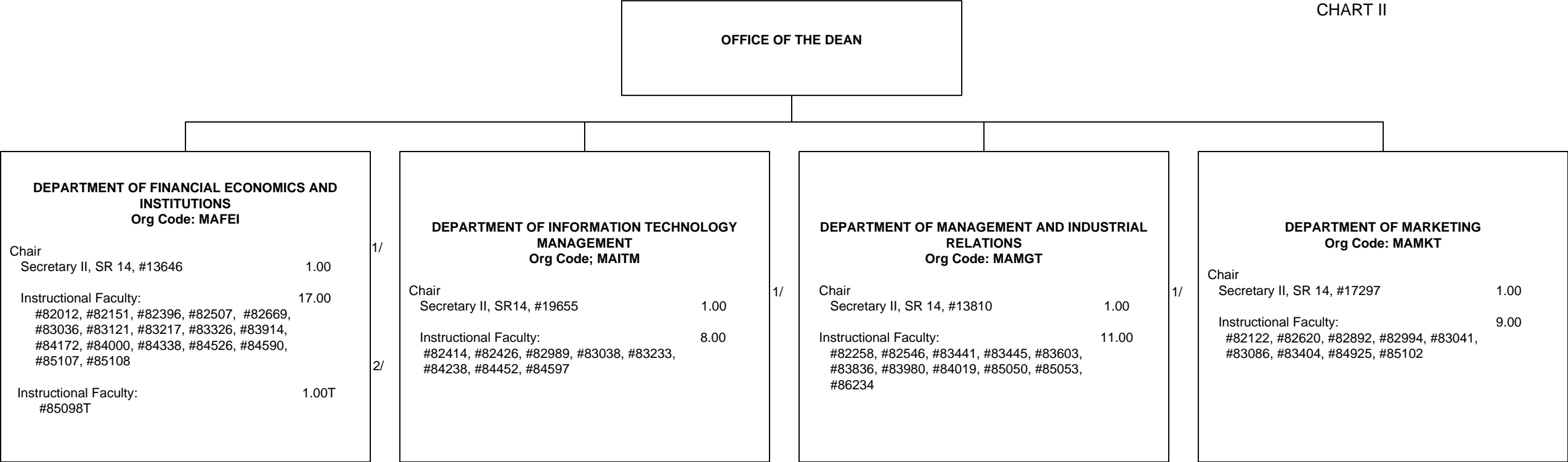
DEPARTMENT TOTAL: PERM TEMP
General Funds: 86.00 1.00



1/ Appointed from Instructional Faculty: Director of Graduate Programs in Office of the Dean; Director in Pacific Asian Management Institute; and Chair in School of Accountancy
2/ Director in Pacific Research Institution for Information Systems Management pending, to be re-established.

STATE OF HAWAI'I
UNIVERSITY OF HAWAI'I
UNIVERSITY OF HAWAI'I AT MĀNOA
OFFICE OF THE VICE CHANCELLOR FOR
ACADEMIC AFFAIRS

SHIDLER COLLEGE OF BUSINESS
INSTRUTIONAL DEPARTMENTS
ORGANIZATION CHART
CHART II



1/ All Department Chair positions appointed from Instructional Faculty.
2/ Instructional Faculty positions #85107 and #85108 pending establishment of position.