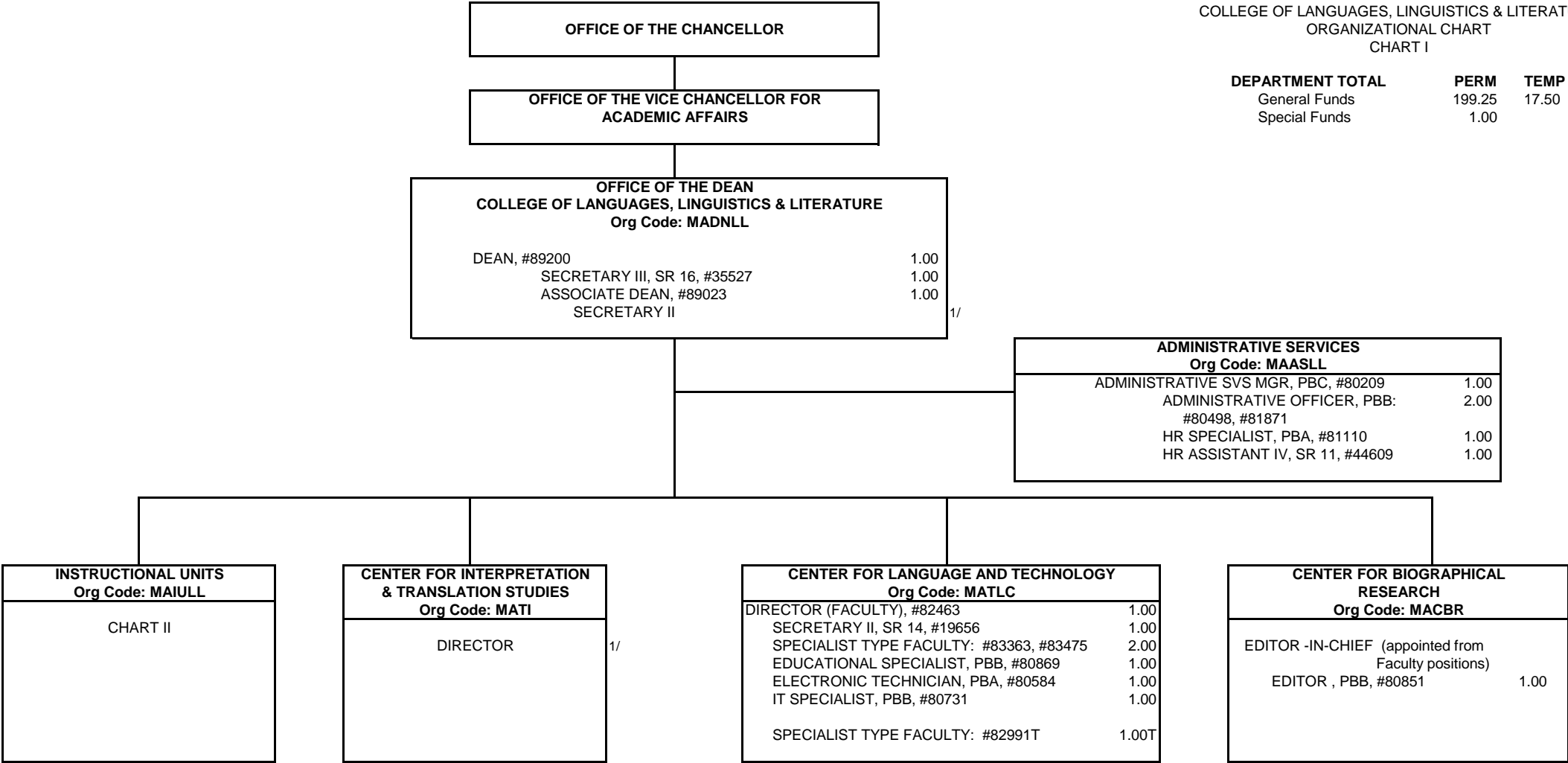


STATE OF HAWAII
UNIVERSITY OF HAWAII
UNIVERSITY OF HAWAII AT MANOA
OFFICE OF THE VICE CHANCELLOR FOR ACADEMIC AFFAIRS
COLLEGE OF LANGUAGES, LINGUISTICS & LITERATURE
ORGANIZATIONAL CHART
CHART I

DEPARTMENT TOTAL	PERM	TEMP
General Funds	199.25	17.50
Special Funds	1.00	



1/ Secretary II in the Office of the Dean for LLL and Director in Center for Interpretation & Translation Studies positions abolished, pending reorganization

CHART TOTAL	PERM	TEMP
General Funds	16.00	1.00

STATE OF HAWAII
UNIVERSITY OF HAWAII
UNIVERSITY OF HAWAII AT MANOA
COLLEGE OF LANGUAGES, LINGUISTICS & LITERATURE
INSTRUCTIONAL UNITS

ORGANIZATIONAL CHART
CHART II

