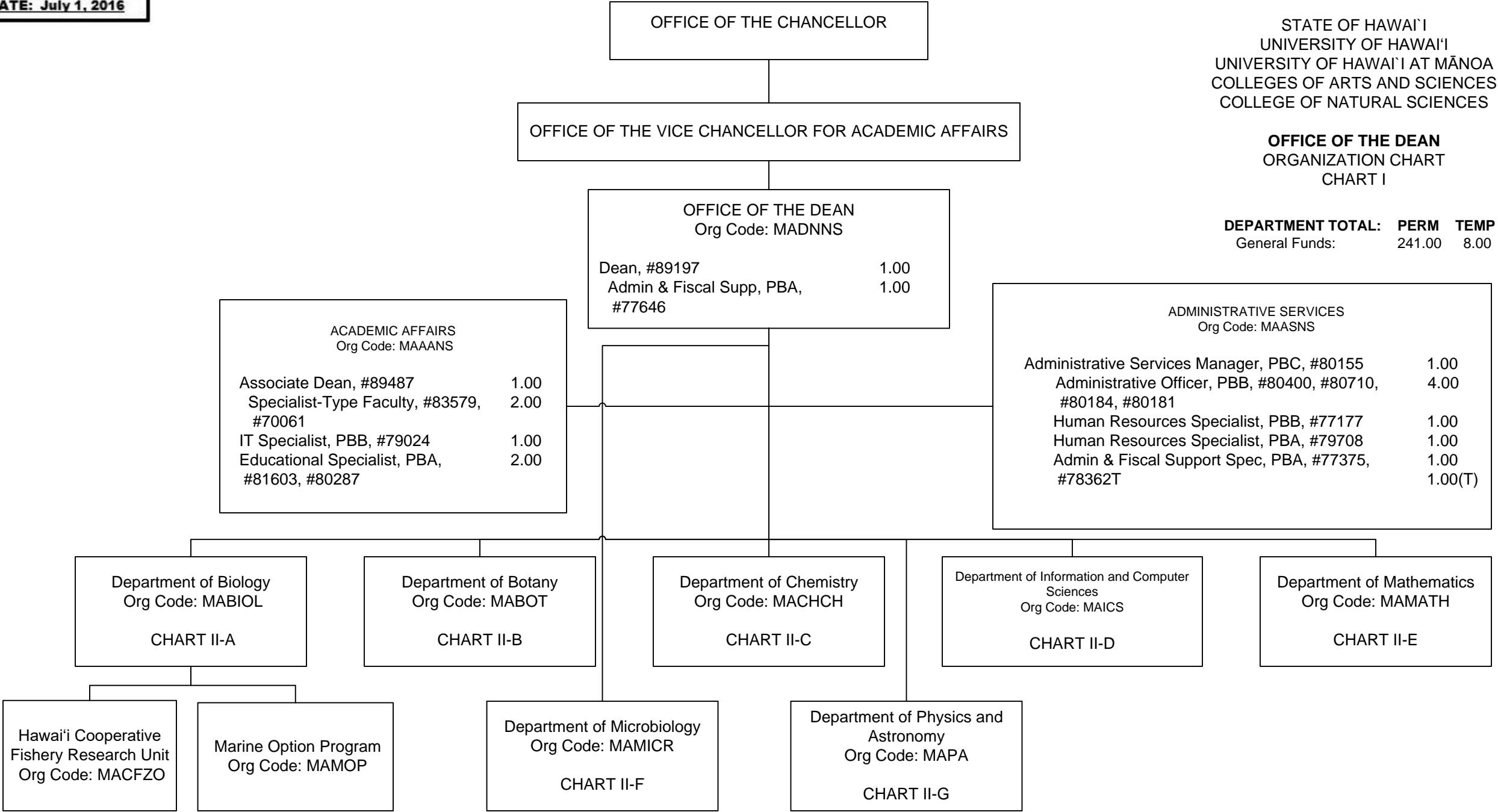


DEPARTMENT TOTAL: PERM TEMP  
General Funds: 241.00 8.00



1/ Admin & Fiscal Supp Spec, #78362T in Administrative Services is an appropriated temporary position

OFFICE OF THE DEAN

DEPARTMENT OF BIOLOGY  
Org Code: MABIOL

Chair (Appointed from Faculty Positions)  
Associate Chair of Undergraduate Education  
(Appointed from Faculty Positions)  
Associate Chair for Research and Graduate Education  
(Appointed from Faculty Positions)

Administrative Officer, PBA, #81425	1.00
Admin & Fiscal Support Spec, PBA, #80681	1.00
Program Manager, PBB, #77266	1.00
Educational Specialist, PBB, #77383, #80296, #80637, #81177	4.00
Educational Specialist, PBA, #79023, #81779	2.00

Instructional Faculty:	21.00
#82015, #82167, #82208, #82243, #82269, #82424, #82434, #83079, #83232, #83692, #83857, #83910, #83948, #84144, #84162, #84248, #84378, #84472, #85803, #88135, #88993	

Specialist-Type Faculty:	1.00
#70244	

Graduate Assistants:	8.50
#88021, #88068, #88070, #88081, #88105, #88114, #88150, #88153, #88157, #88354, #88394, #88442, #88447, #88461, #88472, #88516, #88599, #83828T, #83834T, #84249T, #84341T, #84453T, #86064T, #87056T	

1/  
1/

Hawai'i Cooperative  
Fishery Research Unit  
Org Code: MACFZO

Marine Option Program  
Org Code: MAMOP

STATE OF HAWAII  
UNIVERSITY OF HAWAII  
UNIVERSITY OF HAWAII AT MĀNOA  
COLLEGES OF ARTS AND SCIENCES  
COLLEGE OF NATURAL SCIENCES  
**DEPARTMENT OF BIOLOGY**  
POSITION ORGANIZATION CHART

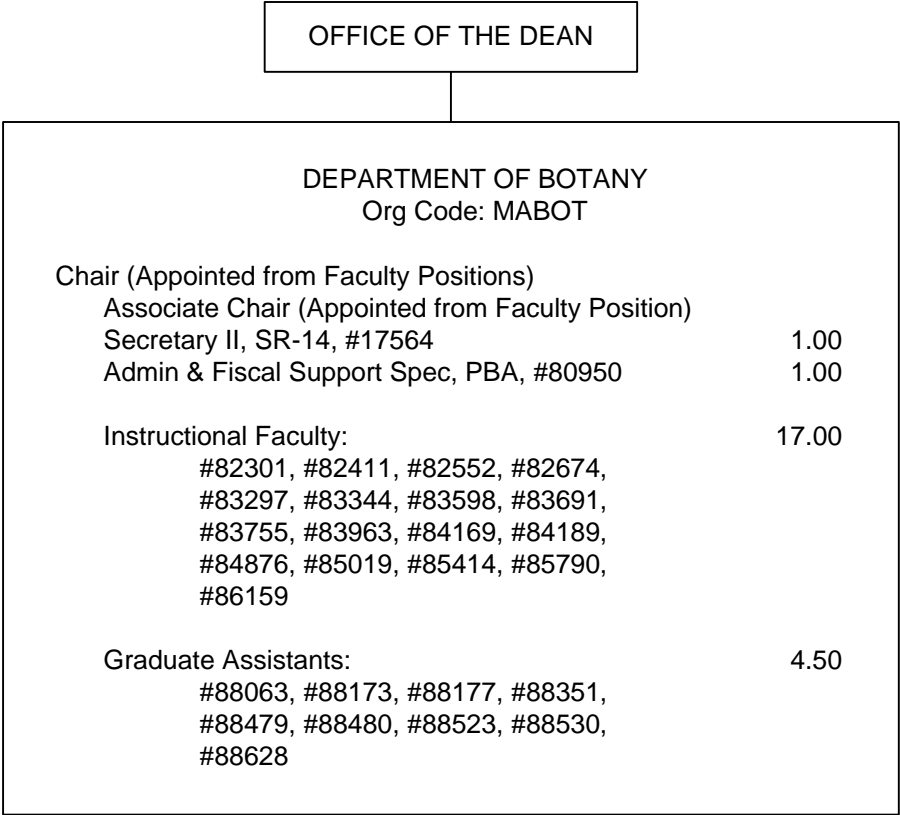
CHART II-A

<b>CHART TOTAL:</b>	<b>PERM</b>	<b>TEMP</b>
General Funds:	39.50	3.50

STATE OF HAWAI'I  
UNIVERSITY OF HAWAI'I  
UNIVERSITY OF HAWAI'I AT MĀNOA  
COLLEGES OF ARTS AND SCIENCES  
COLLEGE OF NATURAL SCIENCES

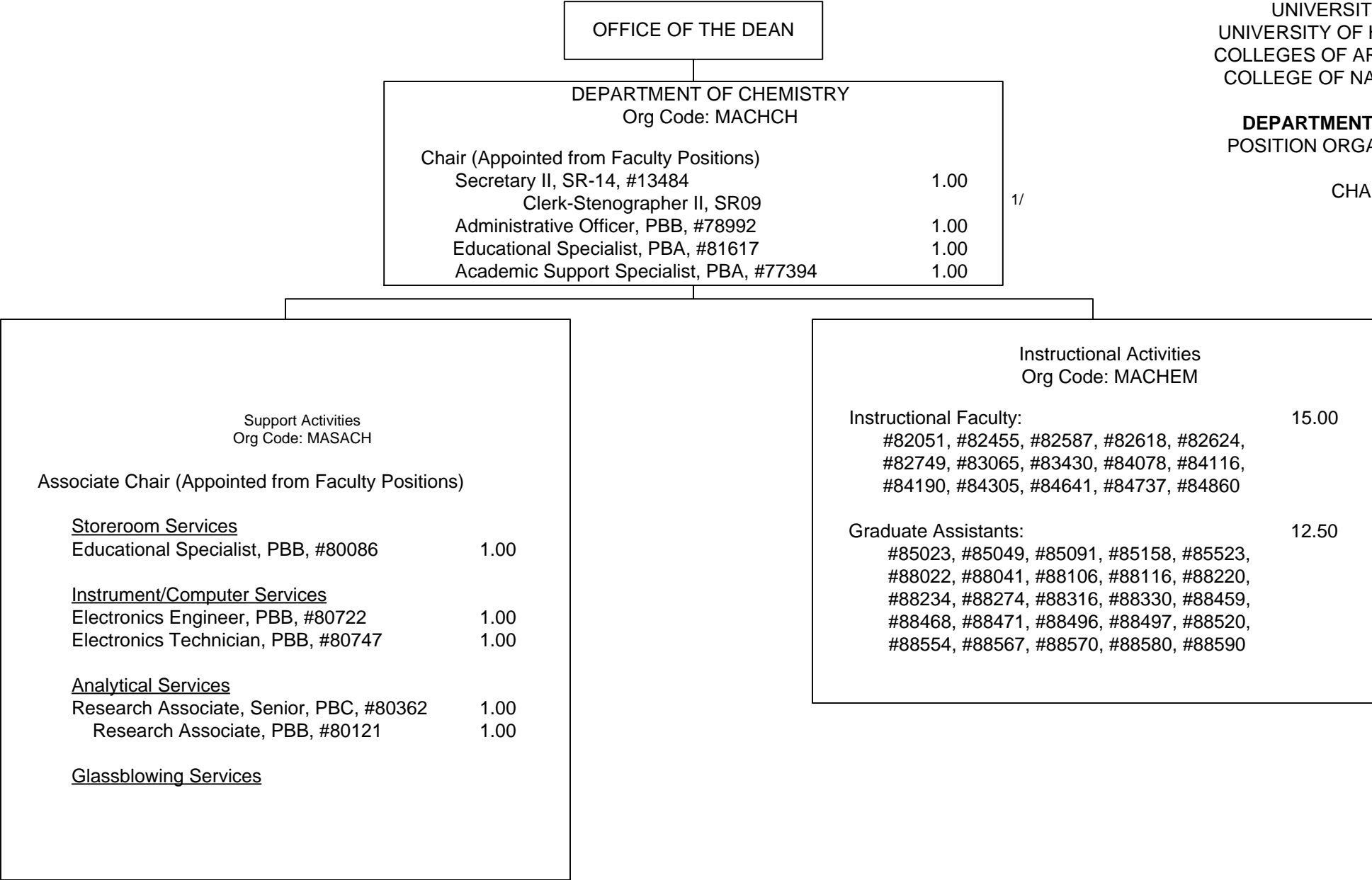
DEPARTMENT OF BOTANY  
POSITION ORGANIZATION CHART

CHART II-B



DEPARTMENT OF CHEMISTRY  
POSITION ORGANIZATION CHART

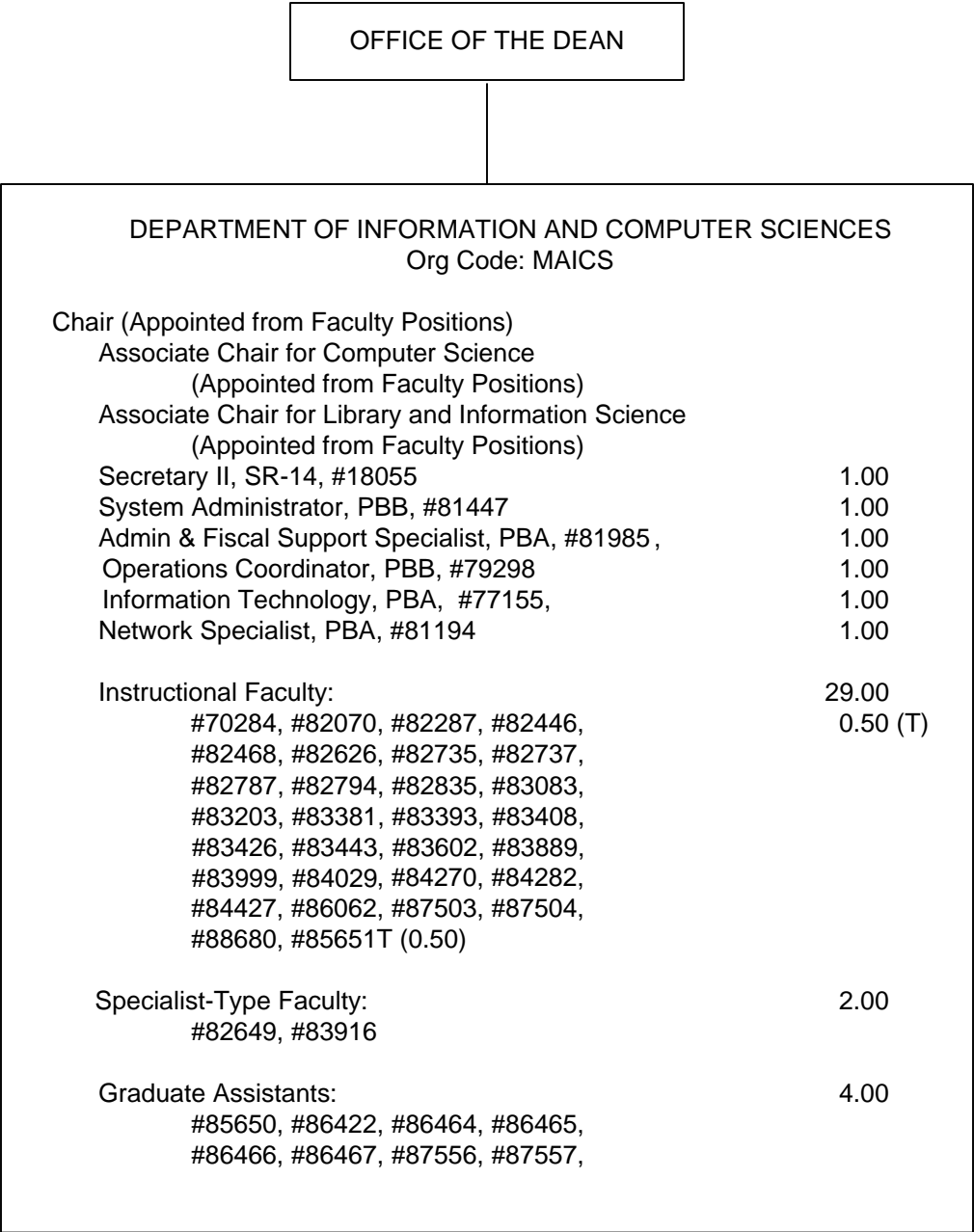
CHART II-C



1/ Clerk Steno II in Department of Chemistry abolished, pending re-establishment.

DEPARTMENT OF INFORMATION  
AND COMPUTER SCIENCES  
POSITION ORGANIZATION CHART

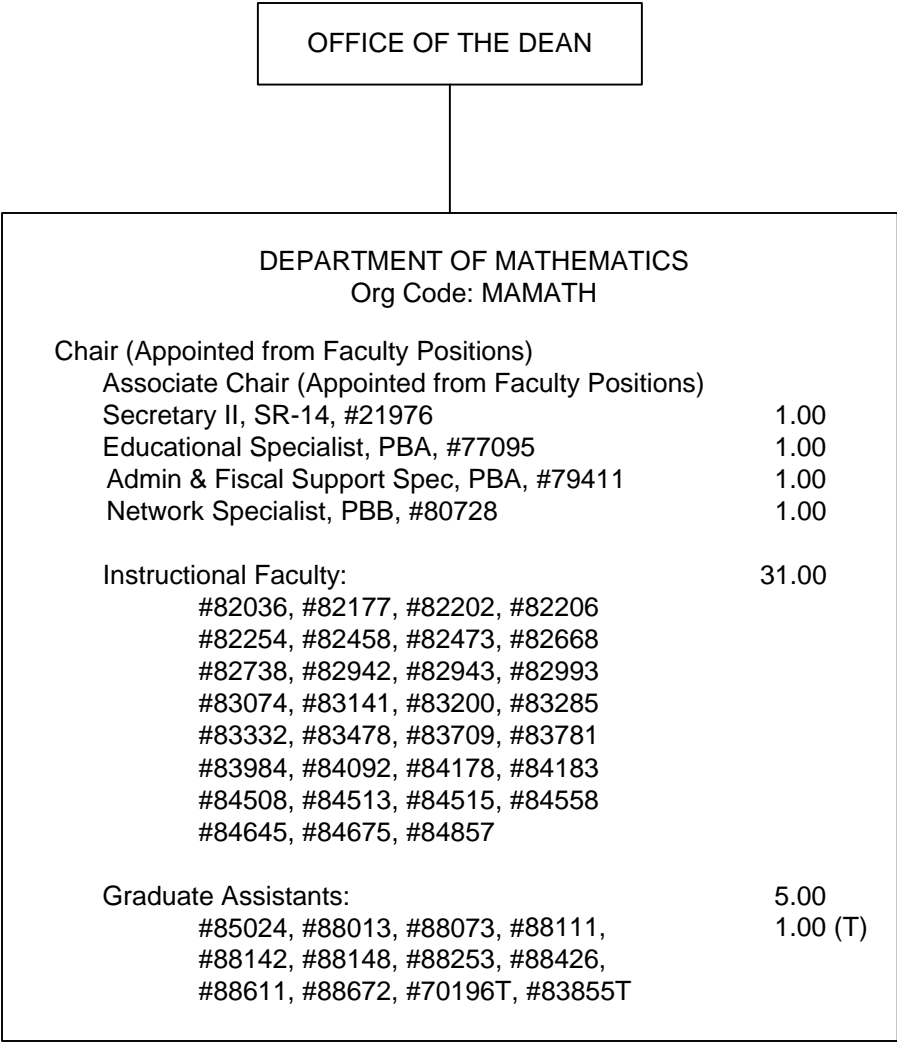
CHART II-D



1/ Instructional Faculty, #85651T is an appropriated temporary position.

DEPARTMENT OF MATHEMATICS  
POSITION ORGANIZATION CHART

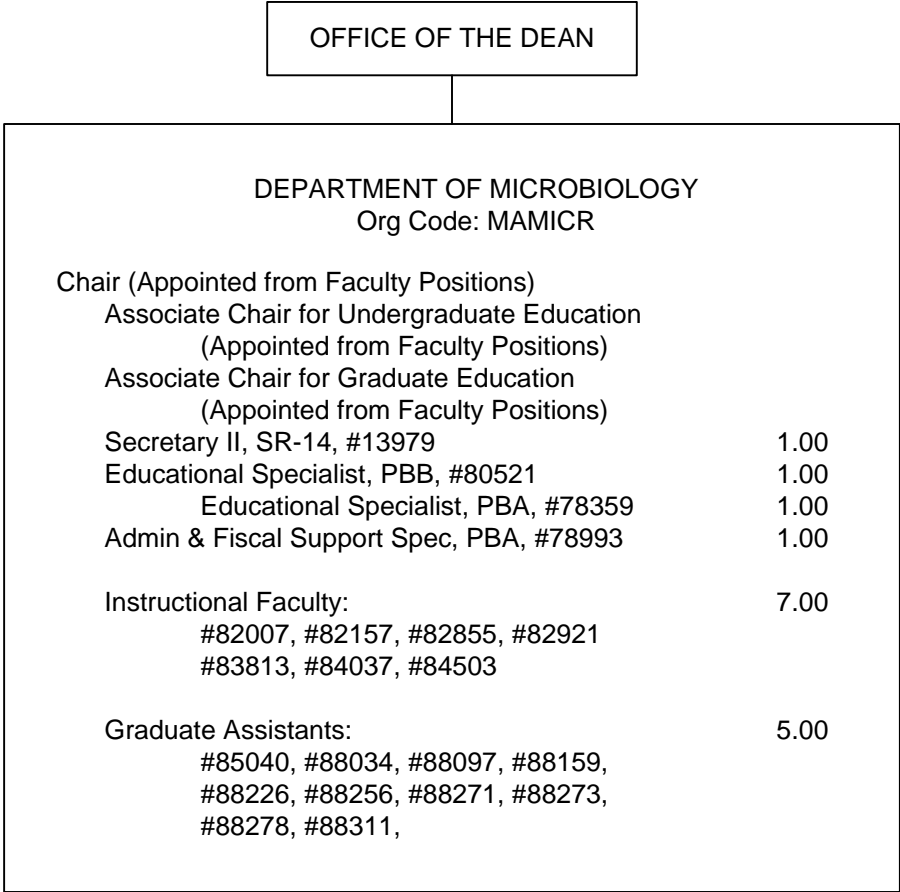
CHART II-E



STATE OF HAWAI'I  
UNIVERSITY OF HAWAI'I  
UNIVERSITY OF HAWAI'I AT MĀNOA  
COLLEGES OF ARTS AND SCIENCES  
COLLEGE OF NATURAL SCIENCES

DEPARTMENT OF MICROBIOLOGY  
POSITION ORGANIZATION CHART

CHART II-F



DEPARTMENT OF PHYSICS AND ASTRONOMY  
POSITION ORGANIZATION CHART

CHART II-G

