

STATE OF HAWAI'I

UNIVERSITY OF HAWAI'I

UNIVERSITY OF HAWAI'I AT MĀNOA

OFFICE OF THE VICE CHANCELLOR FOR

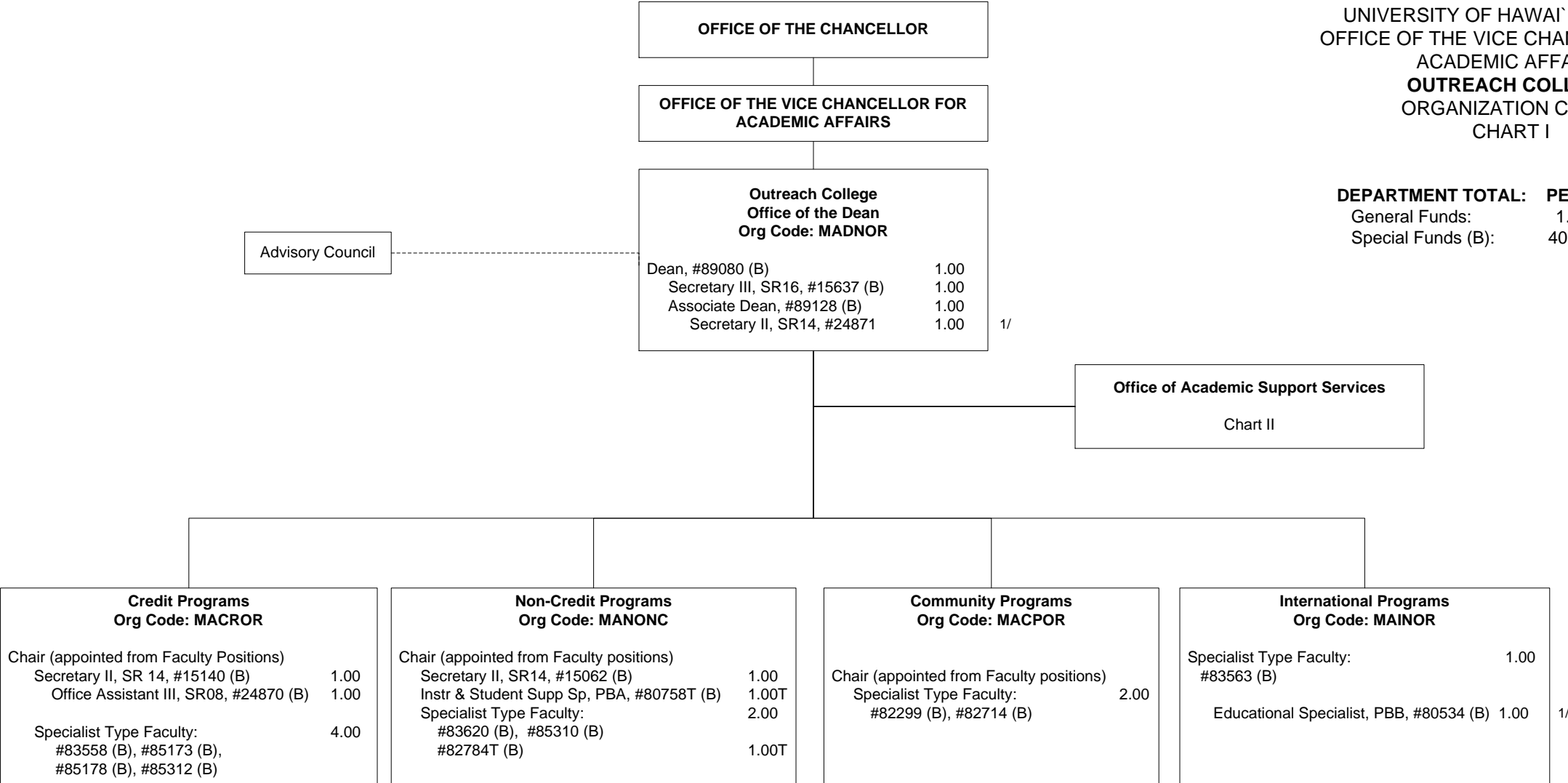
ACADEMIC AFFAIRS

OUTREACH COLLEGE

ORGANIZATION CHART

CHART I

DEPARTMENT TOTAL:	PERM	TEMP
General Funds:	1.00	- -
Special Funds (B):	40.50	2.00



1/ Secretary II in Office of the Dean and Educ Spec in International Programs abolished; pending re-establishment.

CHART TOTAL:	PERM	TEMP
General Funds	1.00	- -
Special Funds (B):	20.50	2.00

STATE OF HAWAI'I
UNIVERSITY OF HAWAI'I
UNIVERSITY OF HAWAI'I AT MĀNOA
OUTREACH COLLEGE
ORGANIZATION CHART
CHART II

