

STATE OF HAWAII

UNIVERSITY OF HAWAII

UNIVERSITY OF HAWAII AT MANOA

COLLEGES OF ARTS AND SCIENCES

COLLEGE OF SOCIAL SCIENCES

ORGANIZATIONAL CHART

CHART I

DEPARTMENT TOTAL:	PERM	TEMP
General Funds:	243.75	4.25

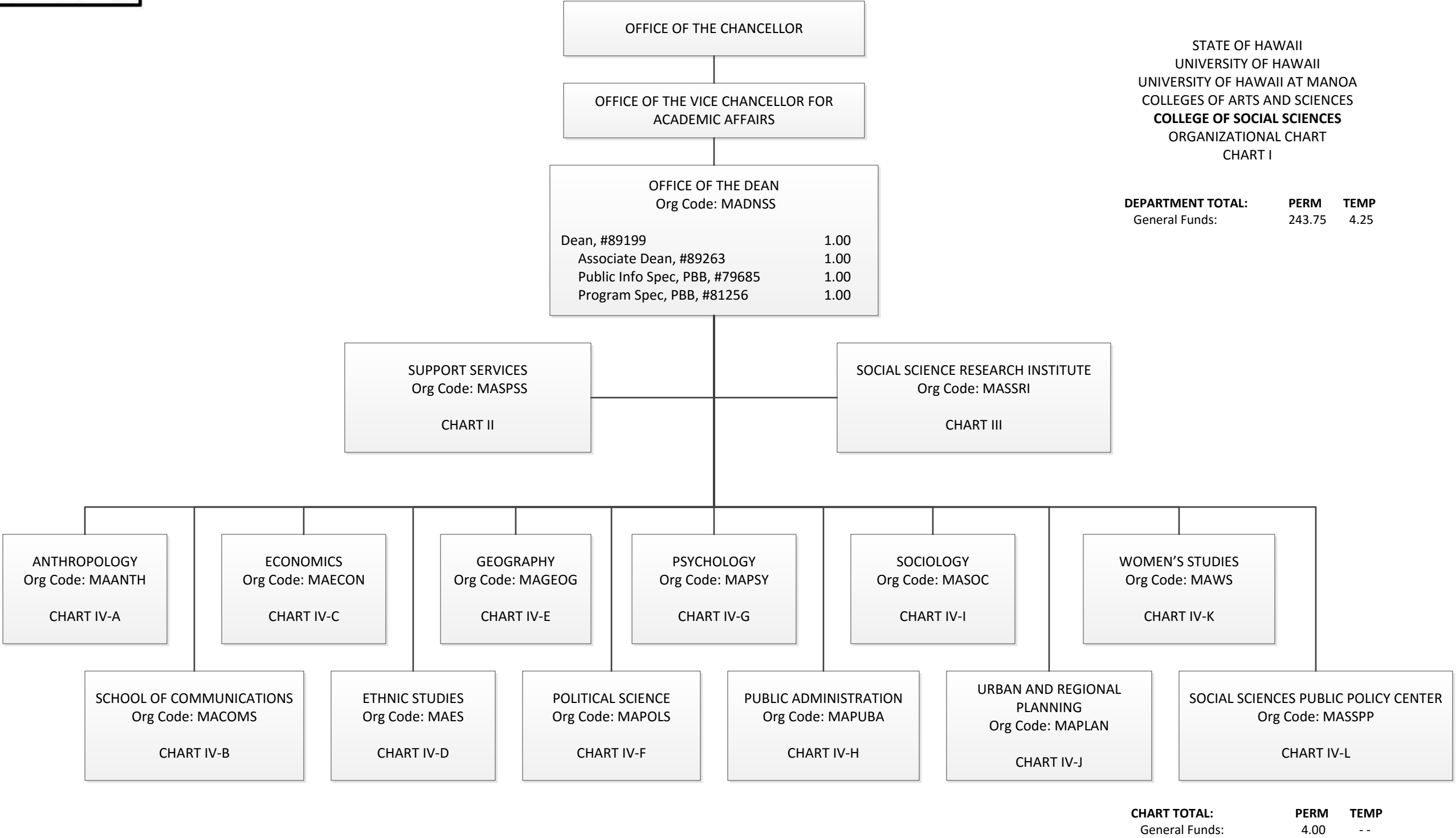
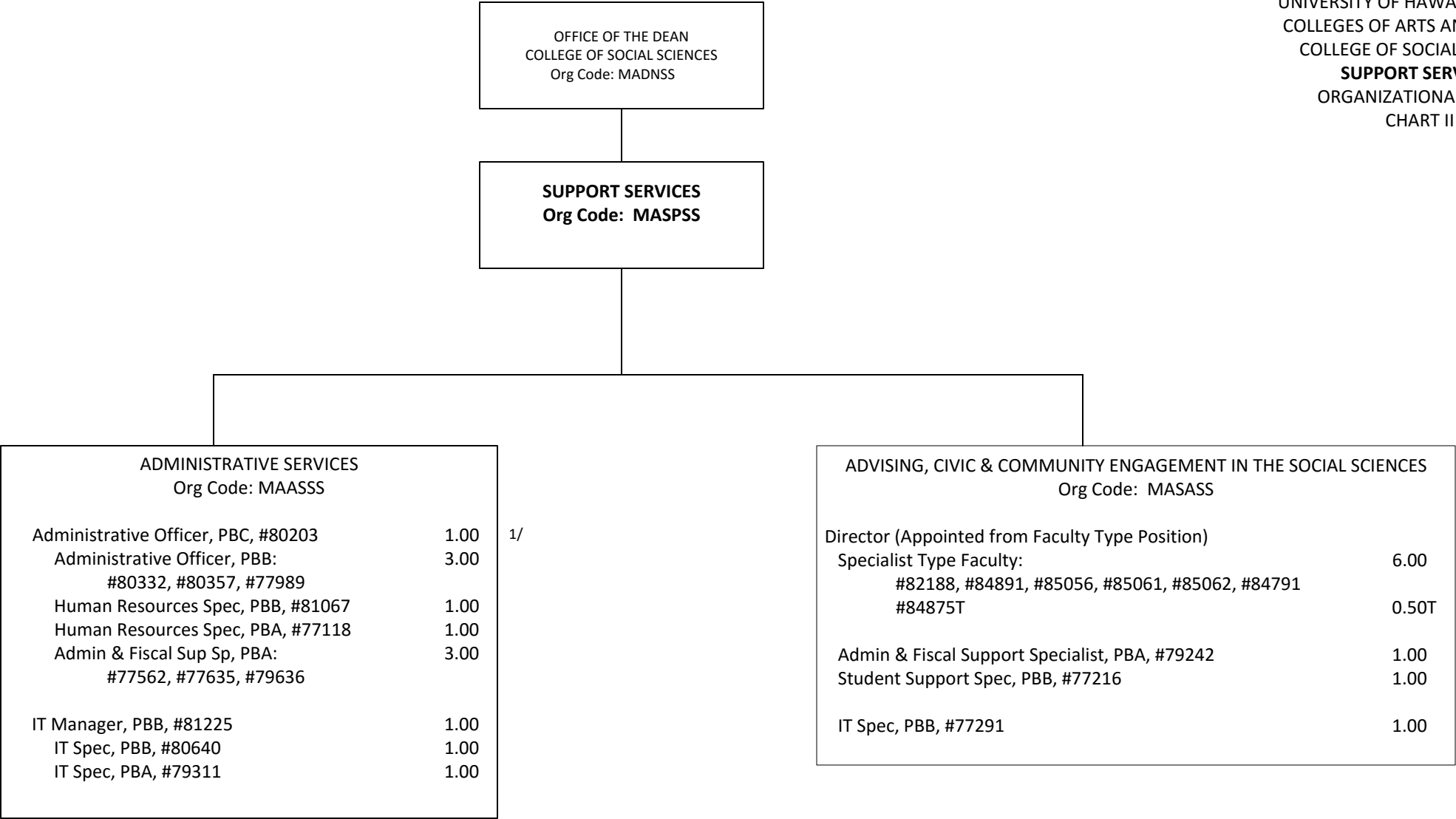


CHART TOTAL:	PERM	TEMP
General Funds:	4.00	--



1/ Admin Ofcr, #80203 in Administrative Services provides technical supervision to positions #77767, #80107, #81943 (Chart III)

STATE OF HAWAII  
UNIVERSITY OF HAWAII  
UNIVERSITY OF HAWAII AT MANOA  
COLLEGES OF ARTS AND SCIENCES  
COLLEGE OF SOCIAL SCIENCES  
**SOCIAL SCIENCE RESEARCH INSTITUTE**  
ORGANIZATIONAL CHART  
CHART III

OFFICE OF THE DEAN

SOCIAL SCIENCE RESEARCH INSTITUTE  
OFFICE OF THE DIRECTOR  
Org Code: MASSRI

Director, #862261.00  
Specialist Type Faculty:  
#88743, #88751 (0.75)1.75  
Adm & Fiscal Support Sp, PBA, #800871.00  
#80819T0.25T

FISCAL SERVICES  
Org Code: MAASRI

Administrative Officer, PBB3.00  
#77767, #80107, #81943

ECONOMIC RESEARCH ORGANIZATION  
Org Code: MARSRI

Instr Type Faculty, #84797 (0.50)0.50  
Instr Type Faculty, #848711.00  
Specialist Type Faculty:  
#84643, #84870, #857363.00  
#88133T(0.50)0.50T  
IT Specialist, PBB, #795471.00

CENTER FOR ORAL HISTORY  
Org Code: MAOHRI

Ed Specialist, PBB, #808131.00  
Research Assoc, PBB, #809351.00  
Research Assoc, PBA, #77024 (0.50)0.50

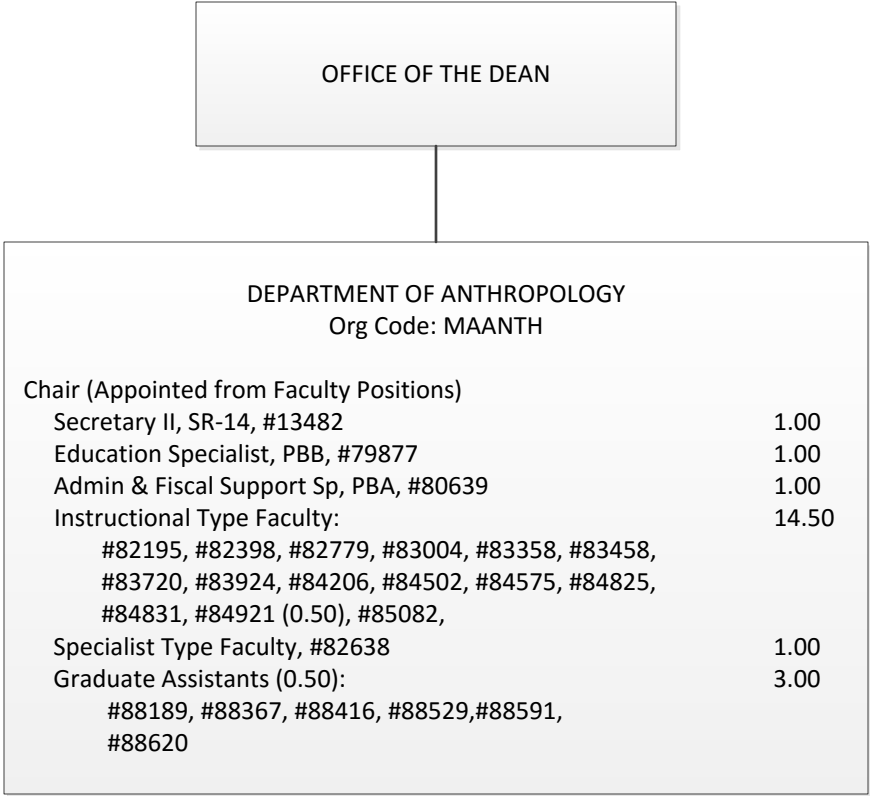
CENTER FOR YOUTH RESEARCH  
Org Code: MAYRRI

Instr Type Faculty, #84797 (0.50)0.50  
Ed Specialist, PBB, #805311.00

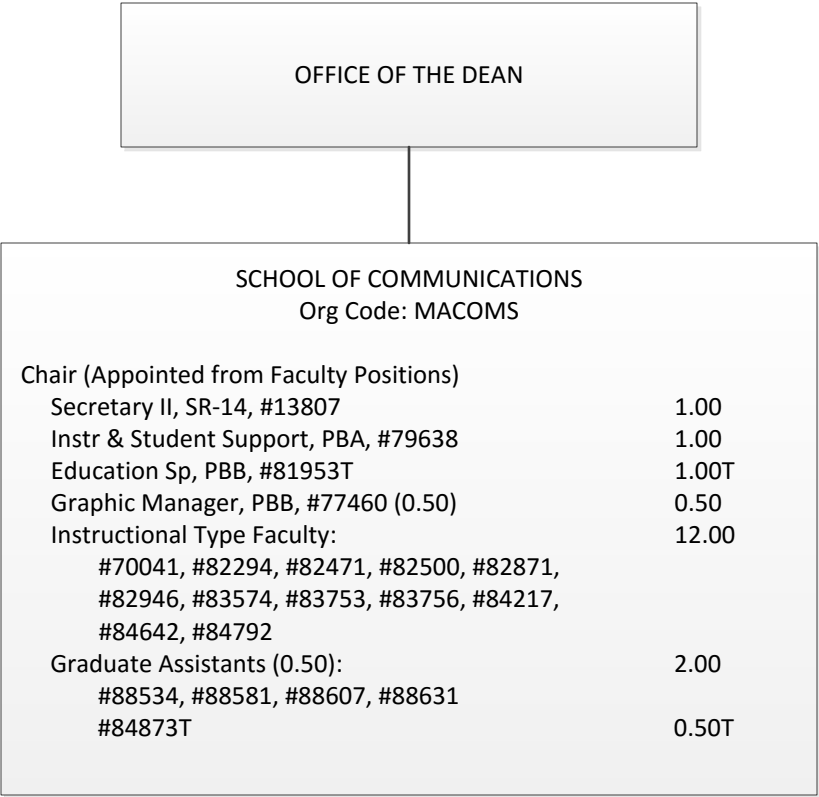
TELECOMMUNICATIONS AND SOCIAL INFORMATICS (TASI)  
RESEARCH PROGRAM / PEACESAT  
Org Code: MAPSAT

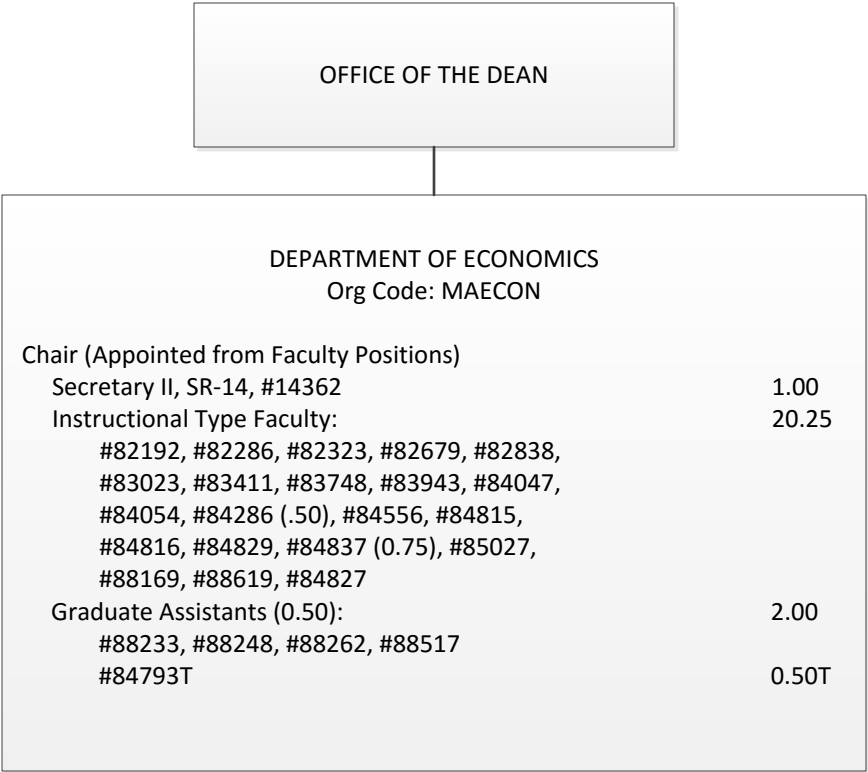
Specialist Type Faculty, #862251.00

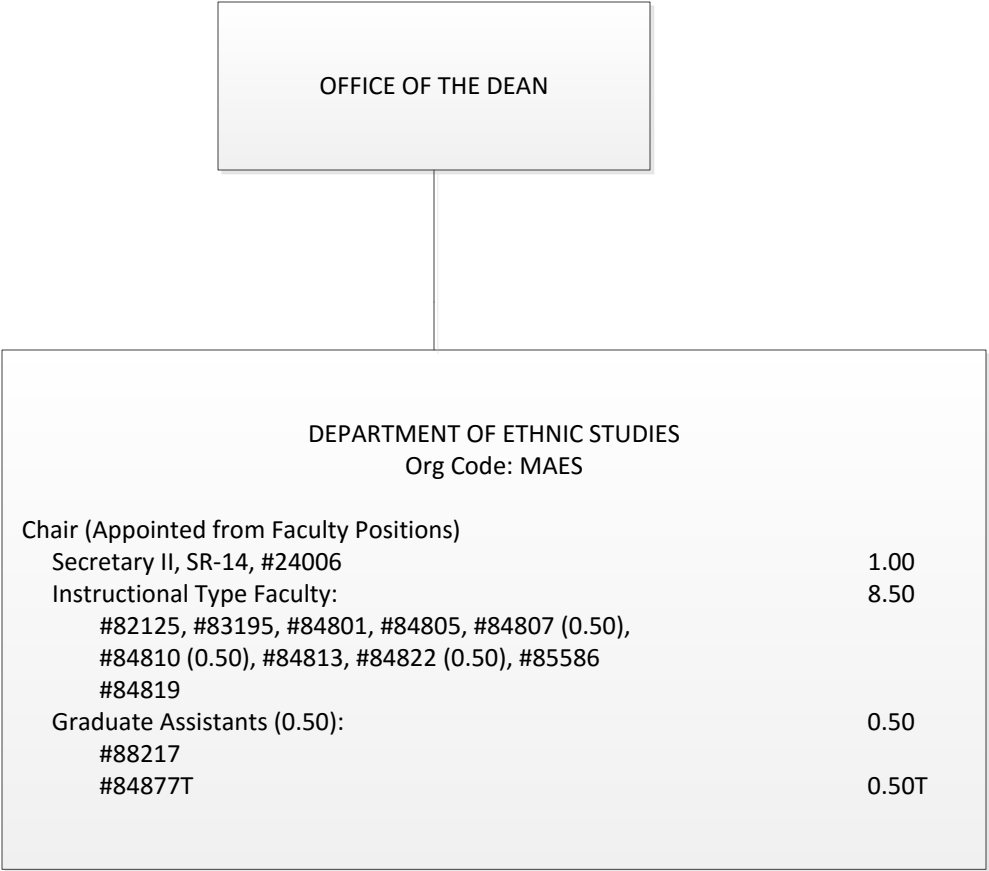
STATE OF HAWAII  
UNIVERSITY OF HAWAII  
UNIVERSITY OF HAWAII AT MANOA  
COLLEGES OF ARTS AND SCIENCES  
COLLEGE OF SOCIAL SCIENCES  
**DEPARTMENT OF ANTHROPOLOGY**  
ORGANIZATIONAL CHART  
CHART IV-A

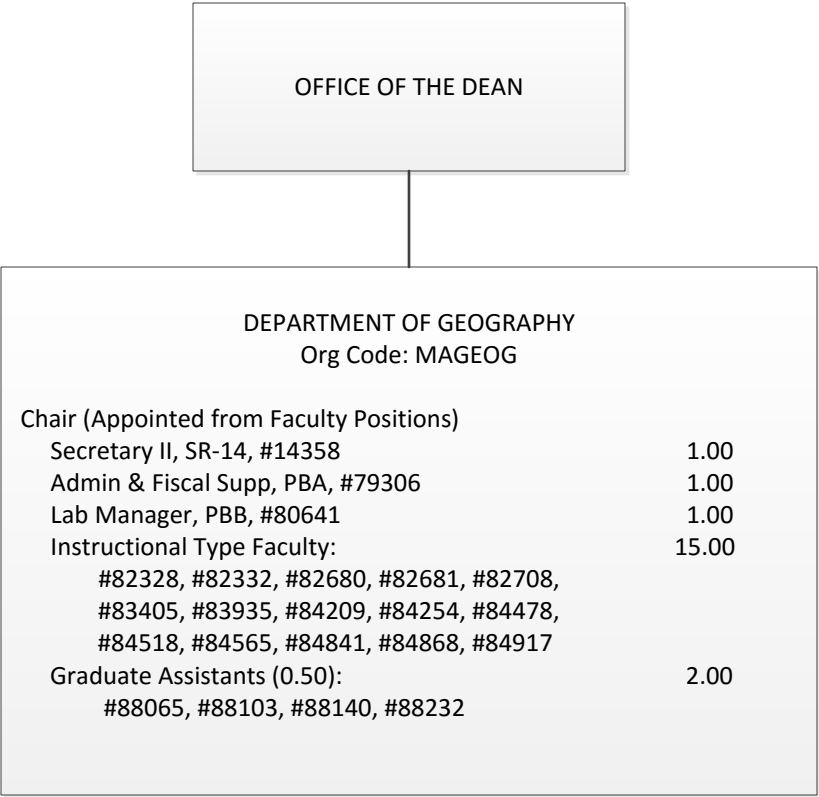


STATE OF HAWAII  
UNIVERSITY OF HAWAII  
UNIVERSITY OF HAWAII AT MANOA  
COLLEGES OF ARTS AND SCIENCES  
COLLEGE OF SOCIAL SCIENCES  
**SCHOOL OF COMMUNICATIONS**  
ORGANIZATIONAL CHART  
CHART IV-B

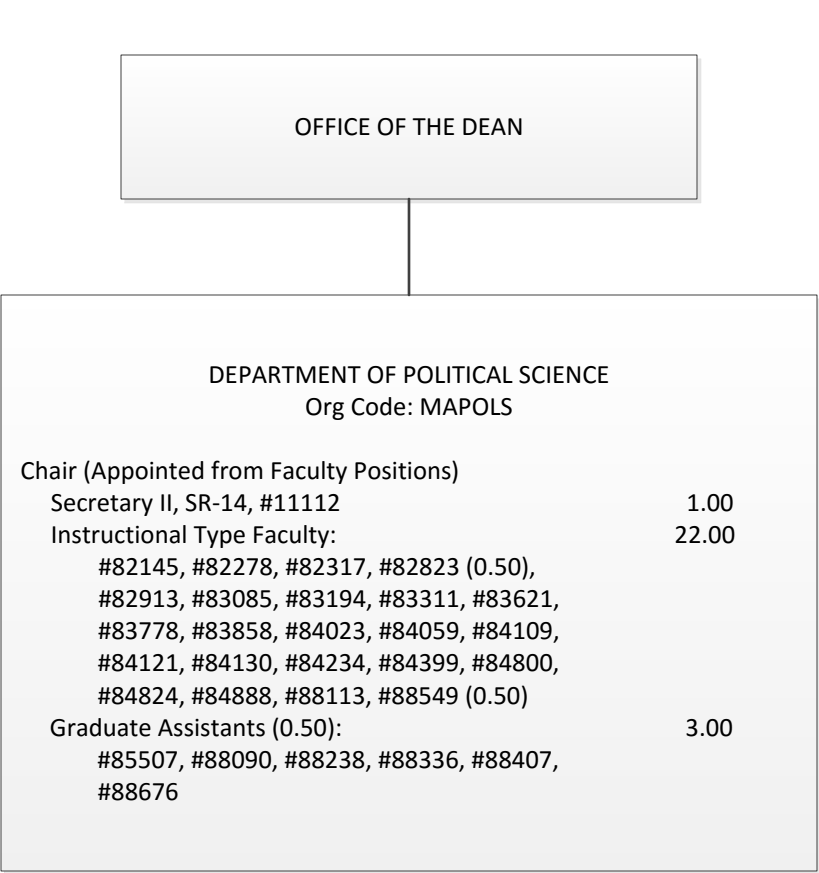


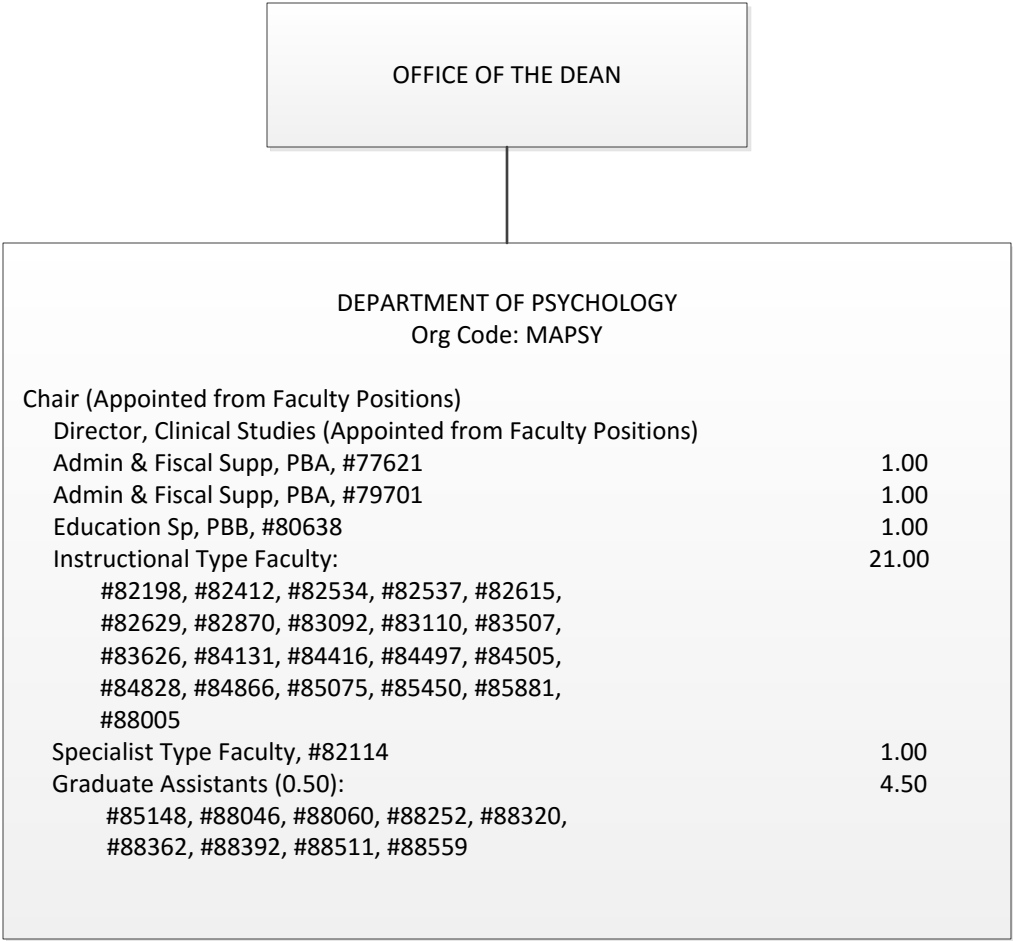




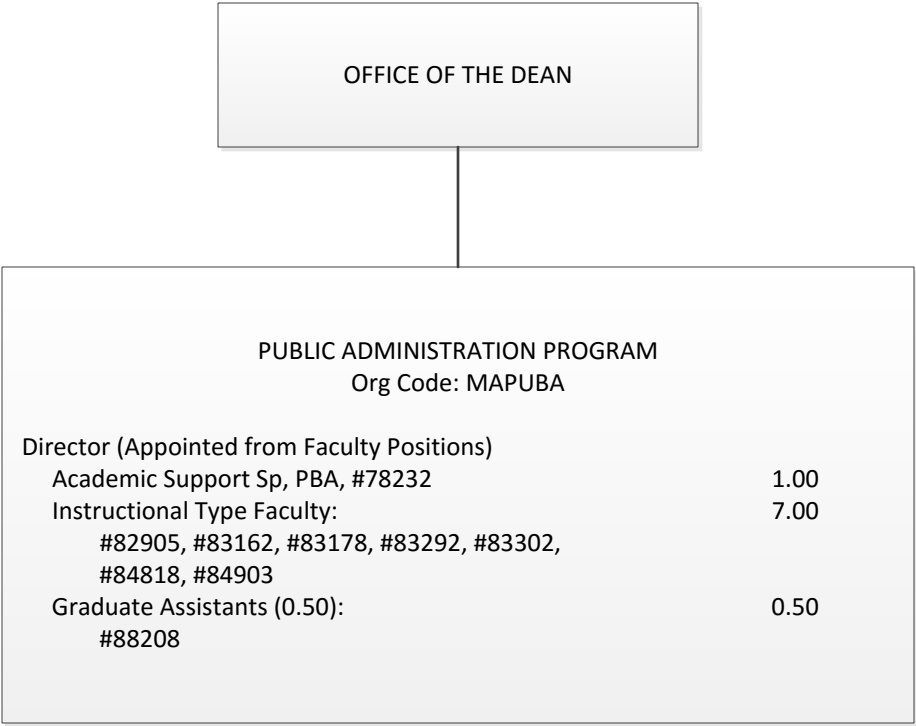


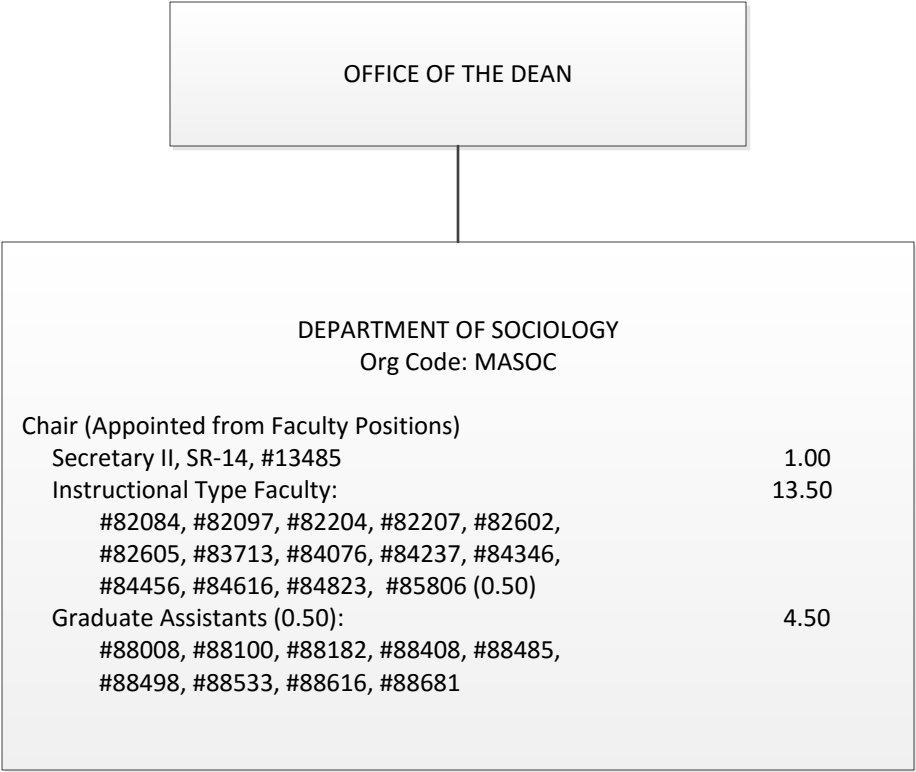




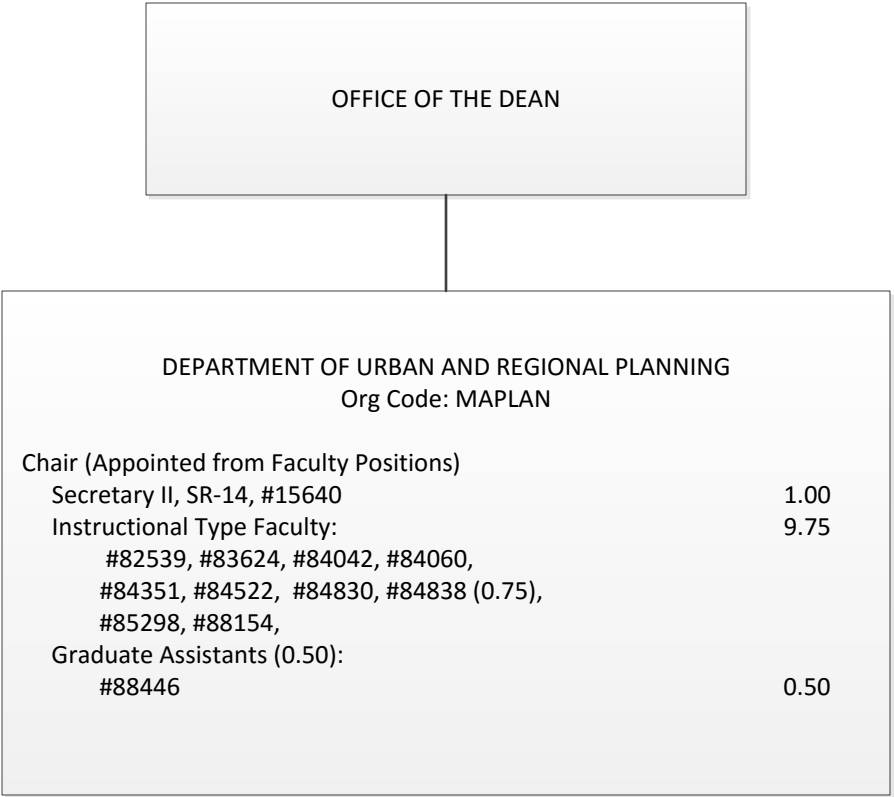


STATE OF HAWAII  
UNIVERSITY OF HAWAII  
UNIVERSITY OF HAWAII AT MANOA  
COLLEGES OF ARTS AND SCIENCES  
COLLEGE OF SOCIAL SCIENCES  
**PUBLIC ADMINISTRATION PROGRAM**  
ORGANIZATIONAL CHART  
CHART IV-H





STATE OF HAWAII  
UNIVERSITY OF HAWAII  
UNIVERSITY OF HAWAII AT MANOA  
COLLEGES OF ARTS AND SCIENCES  
COLLEGE OF SOCIAL SCIENCES  
DEPARTMENT OF URBAN AND REGIONAL PLANNING  
ORGANIZATIONAL CHART  
CHART IV-J



STATE OF HAWAII  
UNIVERSITY OF HAWAII  
UNIVERSITY OF HAWAII AT MANOA  
COLLEGES OF ARTS AND SCIENCES  
COLLEGE OF SOCIAL SCIENCES  
**DEPARTMENT OF WOMEN'S STUDIES**  
ORGANIZATIONAL CHART  
CHART IV-K

