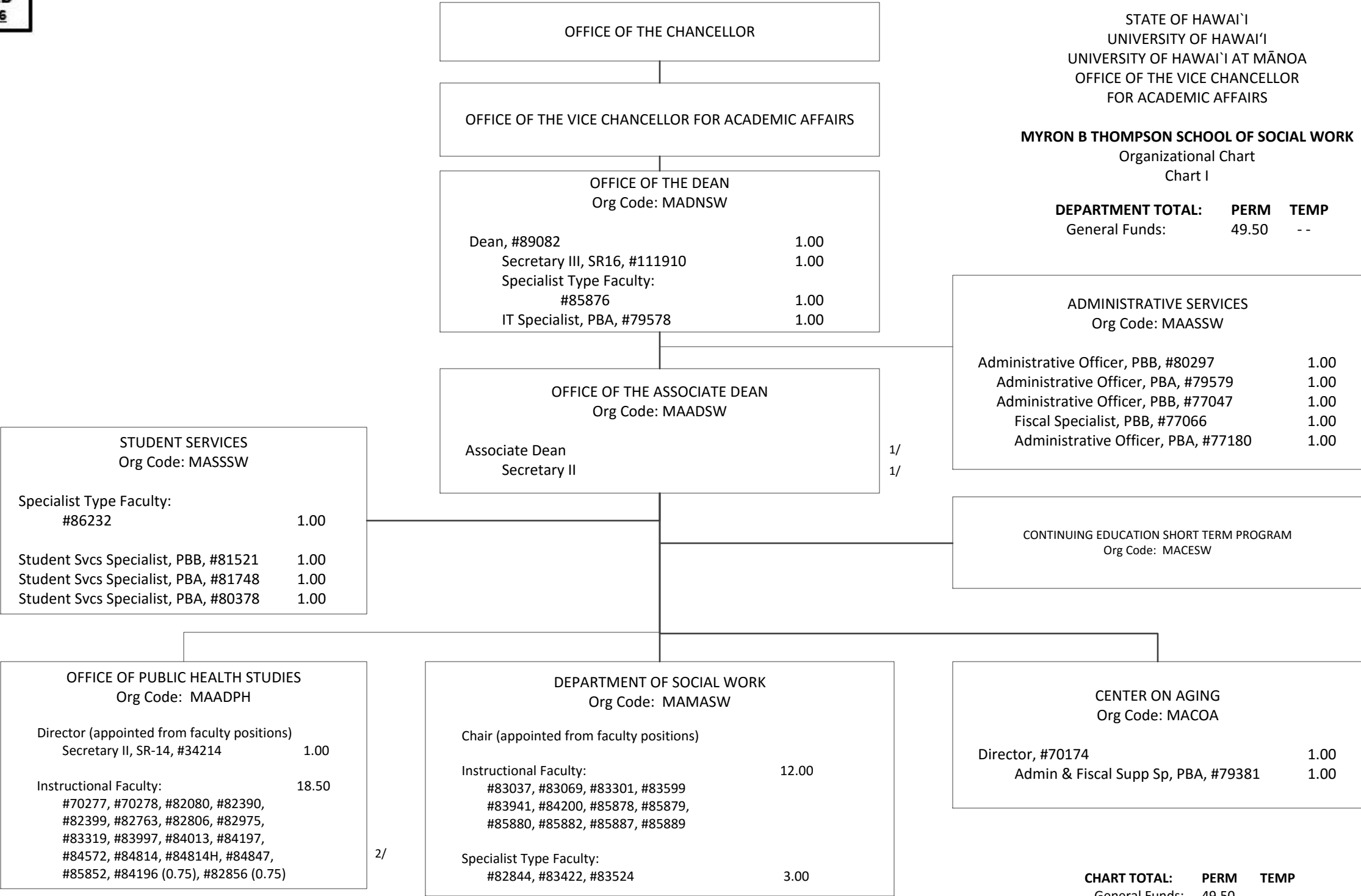


STATE OF HAWAI'I
UNIVERSITY OF HAWAI'I
UNIVERSITY OF HAWAI'I AT MĀNOA
OFFICE OF THE VICE CHANCELLOR
FOR ACADEMIC AFFAIRS

MYRON B THOMPSON SCHOOL OF SOCIAL WORK

Organizational Chart
Chart I

DEPARTMENT TOTAL:	PERM	TEMP
General Funds:	49.50	--



1/ Associate Dean and Secretary II in Office of the Associate Dean to be established.

2/ Instructional Faculty, #84814H in Office of Public Health Studies to be renumbered.

CHART TOTAL:	PERM	TEMP
General Funds:	49.50	--