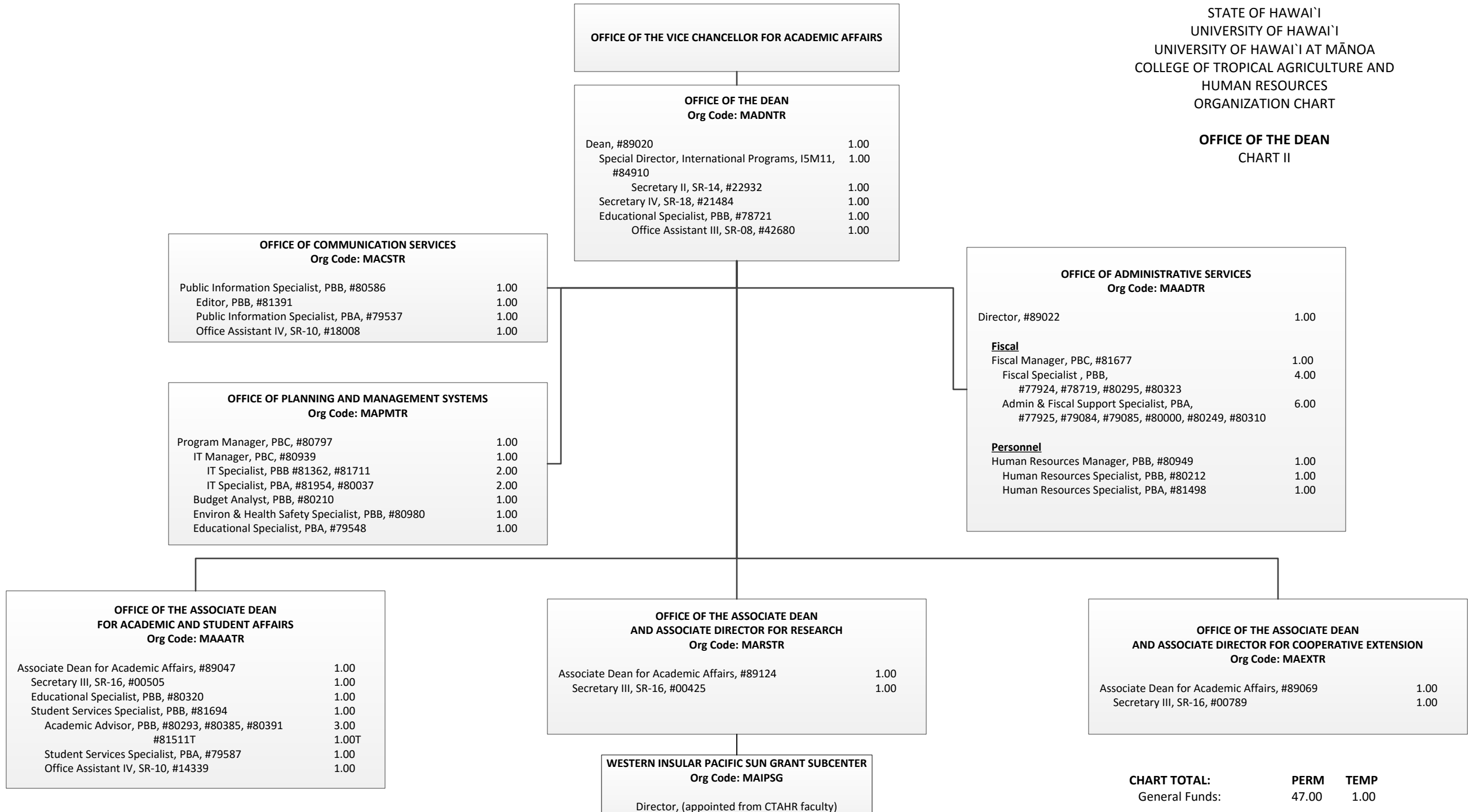


STATE OF HAWAIʻI
UNIVERSITY OF HAWAIʻI
UNIVERSITY OF HAWAIʻI AT MĀNOA
COLLEGE OF TROPICAL AGRICULTURE AND
HUMAN RESOURCES
ORGANIZATION CHART
CHART I

DEPARTMENT TOTAL:	PERM	TEMP
General Funds:	242.64	1.00

STATE OF HAWAII
UNIVERSITY OF HAWAII
UNIVERSITY OF HAWAII AT MĀNOA
COLLEGE OF TROPICAL AGRICULTURE AND
HUMAN RESOURCES
ORGANIZATION CHART

OFFICE OF THE DEAN
CHART II



OFFICE OF THE ASSOCIATE DEAN FOR
ACADEMIC AND STUDENT AFFAIRS

STATE OF HAWAI'I
UNIVERSITY OF HAWAI'I
UNIVERSITY OF HAWAI'I AT MĀNOA
COLLEGE OF TROPICAL AGRICULTURE AND
HUMAN RESOURCES
ORGANIZATION CHART

DEPARTMENT OF FAMILY AND CONSUMER SCIENCES
CHART III

DEPARTMENT OF FAMILY AND CONSUMER SCIENCES
Org Code: MAFCS

Chairperson (Appointment from among faculty positions)	
Secretary II, SR-14, #22849	1.00
Office Assistant III, SR-08, #21208	1.00
Instr & Student Support Specialist, PBA, #80784	1.00
Administrative & Fiscal Support Specialist, PBA, #78061	1.00
Graduate Assistants	2.50
#88134, #88219, #88410, #88565, #88576	
Faculty Positions	11.25
Oahu	
Instructional Faculty:	
#82094, #82336, #82866, #82869, #83525, #83553, #83690,	
#83765, #84500, #84914, #86034, #86066, #86274	
Specialist Type Faculty:	
#85421	
Agent Type Faculty:	
#82074, #84685	
Maui	
Agent Type Faculty:	
#84120, #84147	
Hawaii	
Agent Type Faculty:	
#82313, #82505	
Kauai	
Agent Type Faculty:	
#82175	

4-H OFFICE
Org Code: MA4H

Specialist Type Faculty:	1.00
#83968	

CENTER ON THE FAMILY
Org Code: MACOF

Faculty Position	4.00
Specialist, #82181	
Specialist Type Faculty:	
#82238, #84145, #84325, #84477, #85550	
Research Type Faculty:	
#83399, #84585	
Secretary II, SR-14, #46186	1.00
Administrative & Fiscal Support Spec, PBA, #81073	1.00

CHART TOTAL:	PERM	TEMP
General Funds:	24.75	--

OFFICE OF THE ASSOCIATE DEAN FOR
ACADEMIC AND STUDENT AFFAIRS

STATE OF HAWAI'I
UNIVERSITY OF HAWAI'I
UNIVERSITY OF HAWAI'I AT MĀNOA
COLLEGE OF TROPICAL AGRICULTURE AND
HUMAN RESOURCES
ORGANIZATION CHART

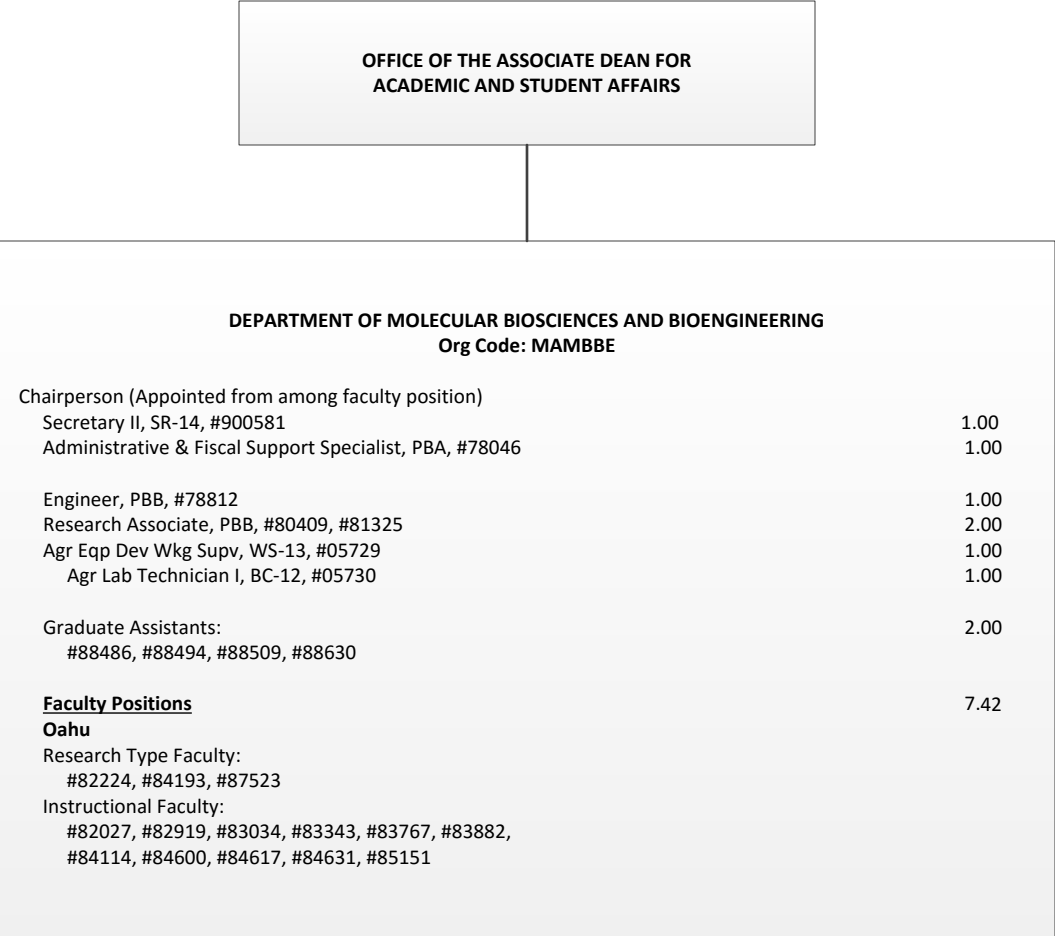
DEPARTMENT OF HUMAN NUTRITION, FOOD AND
ANIMAL SCIENCES
CHART IV

DEPARTMENT OF HUMAN NUTRITION, FOOD AND ANIMAL SCIENCES		
Org Code: MAHFAS		
Chairperson (Appointed from among faculty position)		
Secretary II, SR-14, #00400	1.00	
Office Assistant III, SR-08, #900569	1.00	
Administrative & Fiscal Support Specialist, PBA, #80386	1.00	
Research Associate, PBB, #80410	1.00	
Research Associate, PBA, #77092	1.00	
Graduate Assistants		
#88088, #88165, #88303, #88594, #88643	2.50	
Faculty Positions	17.85	
Oahu		
Specialist Type Faculty:		
#82107, #83017, #83510, #83830, #84323, #84640		
Research Type Faculty:		
#82945, #83633, #84227, #84454, #84496, #85576		
Instructional Faculty:		
#82248, #82856, #82865, #83267, #83785, #83811, #84306, #84449,		
#84512, #84919, #84920, #85556, #87443, #87552		
Agent Type Faculty:		
#84439		
Maui		
Agent Type Faculty:		
#82639, #83728		
Hawaii		
Specialist Type Faculty:		
#82090		
Agent Type Faculty:		
#84158, #84276, #84297		
Kauai		
Agent Type Faculty:		
#82363		

CHART TOTAL:	PERM	TEMP
General Funds:	25.35	--

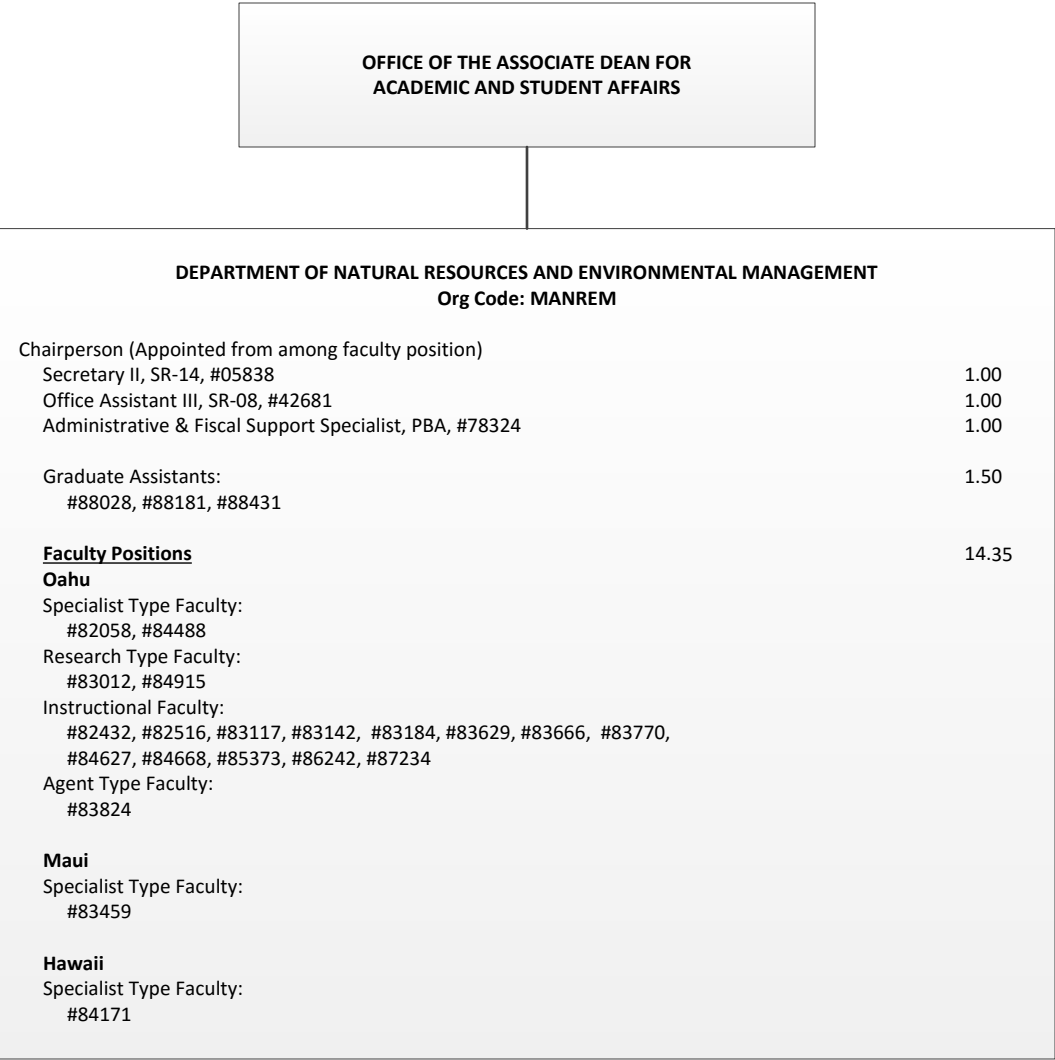
STATE OF HAWAI'I
UNIVERSITY OF HAWAI'I
UNIVERSITY OF HAWAI'I AT MĀNOA
COLLEGE OF TROPICAL AGRICULTURE AND
HUMAN RESOURCES
ORGANIZATION CHART

DEPARTMENT OF MOLECULAR BIOSCIENCES AND
BIOENGINEERING
CHART V



STATE OF HAWAI'I
UNIVERSITY OF HAWAI'I
UNIVERSITY OF HAWAI'I AT MĀNOA
COLLEGE OF TROPICAL AGRICULTURE AND
HUMAN RESOURCES
ORGANIZATION CHART

DEPARTMENT OF NATURAL RESOURCES AND
ENVIRONMENTAL MANAGEMENT
CHART VI



OFFICE OF THE ASSOCIATE DEAN FOR ACADEMIC AND STUDENT AFFAIRS		
DEPARTMENT OF PLANT AND ENVIRONMENTAL PROTECTION SCIENCES Org Code: MAPEPS		
Chairperson (Appointed from among faculty position)		
Secretary II, SR-14, #07477		1.00
Office Assistant III, SR-08, #00794, #15509		2.00
Administrative & Fiscal Support Specialist, PBA, #77864		1.00
Educational Specialist, PBB, #80250		1.00
Research Associate, PBB, #80388, #81178, #81311		3.00
Research Associate, PBA, #81313		1.00
Agr Research Technician V, SR-16, #00442		1.00
Agr Research Technician IV, SR-14, #24270		1.00
Agr Research Technician III, SR-11, #24269		1.00
Graduate Assistants: #84932, #88241		1.00
Faculty Positions		10.81
Oahu		
Specialist Type Faculty: #82550, #83320, #83513, #84006, #84321, #84911		
Research Type Faculty: #82047, #82139, #83067, #83260, #83742 #83884, #84041, #84316, #85547		
Instructional Faculty: #82976, #84138, #85510,		
Agent Type Faculty: #84489		
Maui		
Agent Type Faculty: #85530		
Hawaii		
Research Type Faculty: #83542		
Agent Type Faculty: #83462, #85538		
Kauai		
Instructional Type Faculty: #85505		
Agent Type Faculty: #82196, #83816, #97500F		

STATE OF HAWAI'I
UNIVERSITY OF HAWAI'I
UNIVERSITY OF HAWAI'I AT MĀNOA
COLLEGE OF TROPICAL AGRICULTURE AND
HUMAN RESOURCES
ORGANIZATION CHART

DEPARTMENT OF PLANT AND ENVIRONMENTAL
PROTECTION SCIENCES
CHART VII

CHART TOTAL:	PERM	TEMP
General Funds:	23.81	--

OFFICE OF THE ASSOCIATE DEAN FOR
ACADEMIC AND STUDENT AFFAIRS

STATE OF HAWAI'I
UNIVERSITY OF HAWAI'I
UNIVERSITY OF HAWAI'I AT MĀNOA
COLLEGE OF TROPICAL AGRICULTURE AND
HUMAN RESOURCES
ORGANIZATION CHART

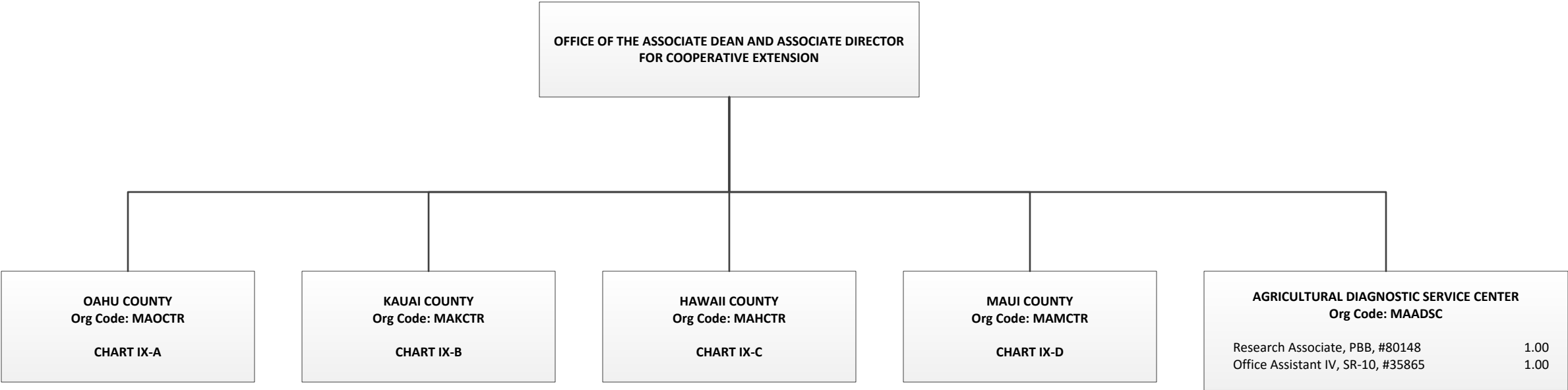
DEPARTMENT OF TROPICAL PLANT AND SOIL SCIENCES
CHART VIII

DEPARTMENT OF TROPICAL PLANT AND SOIL SCIENCES		
Org Code: MATPSS		
Chairperson (Appointed from among faculty position)		
Secretary II, SR-14, #00793		1.00
Office Assistant IV, SR-10, #00399		1.00
Administrative & Fiscal Support Specialist, PBA, #77795		1.00
Research Associate, PBB, #80270		1.00
Agr Research Technician V, SR-16, #11019		1.00
Agr Research Technician IV, SR-14, #00397, #05392, #15512		3.00
Graduate Assistants:		1.00
#88171, #88423		
<u>Faculty Positions</u>		12.46
Oahu		
Specialist Type Faculty:		
#82598, #82985, #83159, #83304, #83388, #83682, #84501, #84916, #85555		
Research Type Faculty:		
#82023, #82240, #82464, #82699, #82747, #83515, #83740, #83938, #84420, #84481, #85877, #86275		
Instructional Type Faculty:		
#83286		
Agent Type Faculty:		
#82881, #84070, #97501F		
Maui		
Agent Type Faculty:		
#83848, #84075, #85477, #87584, #97502F		
		1/
Hawaii		
Research Type Faculty:		
#84067, #84354		
Agent Type Faculty:		
#82485, #82758, #82951, #84648, #97503F		
		1/

CHART TOTAL: PERM TEMP
General Funds: 21.46 --

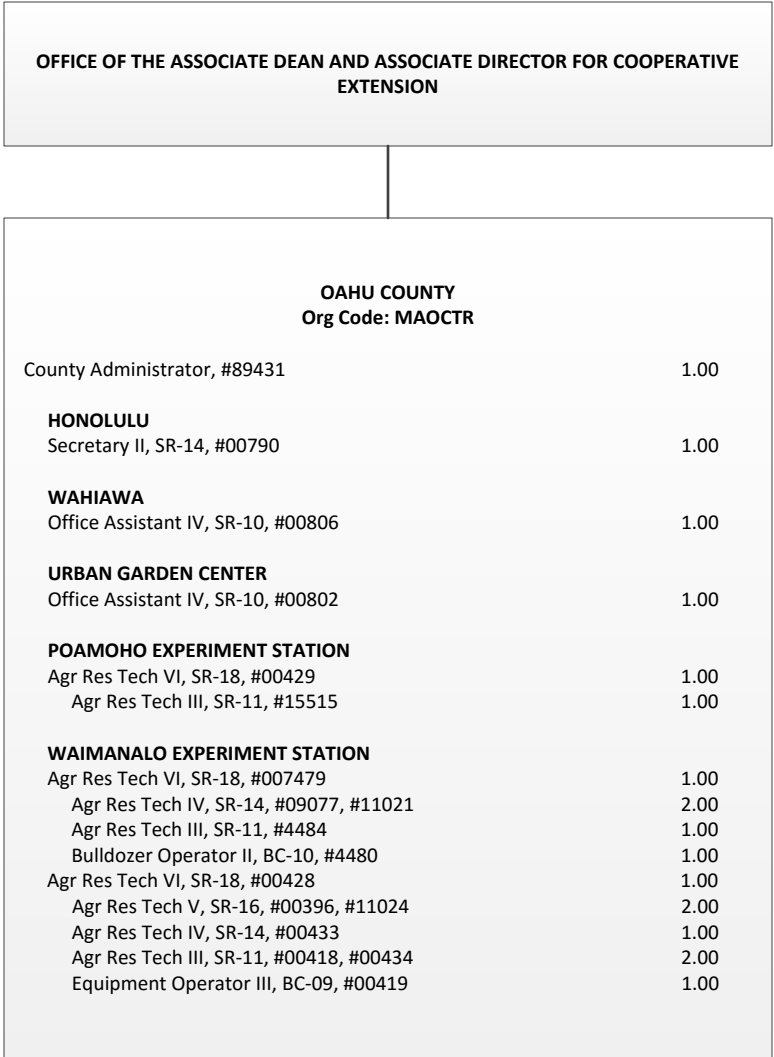
STATE OF HAWAIʻI
UNIVERSITY OF HAWAIʻI
UNIVERSITY OF HAWAIʻI AT MĀNOA
COLLEGE OF TROPICAL AGRICULTURE AND
HUMAN RESOURCES
ORGANIZATION CHART

COUNTY ADMINISTRATION
CHART IX



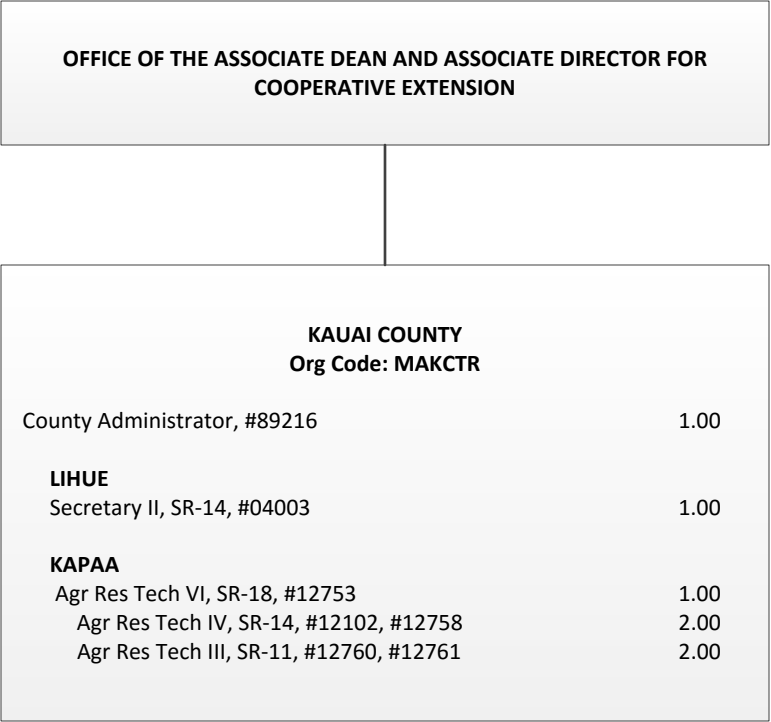
STATE OF HAWAI'I
UNIVERSITY OF HAWAI'I
UNIVERSITY OF HAWAI'I AT MĀNOA
COLLEGE OF TROPICAL AGRICULTURE AND
HUMAN RESOURCES
ORGANIZATION CHART

OAHU COUNTY
CHART IX-A



STATE OF HAWAI'I
UNIVERSITY OF HAWAI'I
UNIVERSITY OF HAWAI'I AT MĀNOA
COLLEGE OF TROPICAL AGRICULTURE AND
HUMAN RESOURCES
ORGANIZATION CHART

KAUAI COUNTY
CHART IX-B



OFFICE OF THE ASSOCIATE DEAN AND ASSOCIATE DIRECTOR FOR COOPERATIVE
EXTENSION

HAWAII COUNTY

Org Code: MAHCTR

County Administrator, #89213	1.00
KOMOHANA	
Secretary II, SR-14, #13871	1.00
Office Assistant III, SR-08, #00791	1.00
KONA	
Office Assistant IV, SR-10, #900583	1.00
KAMUELA	
Office Assistant IV, SR-10, #00799	1.00

HAWAII COUNTY TECHNICAL SUPPORT

Org Code: MAHTTR

Educational Specialist, PBB, #80311	1.00
EAST HAWAII	
Agr Res Tech VI, SR-18, #12099	1.00
WAIAKEA	
Agr Res Tech V, SR-16, #12094, #14166	2.00
Agr Res Tech IV, SR-14, #12096, #12098, #14168, #15497	4.00
Agr Res Tech III, SR-11, #12767, #17602	2.00
Building Maintenance Worker I, BC-09, #12095	1.00
VOLCANO	
Agr Res Tech V, SR-16, #13206	1.00
Agr Res Tech IV, SR-14, #12097	1.00
MALAMA-KI	
WEST HAWAII	
Agr Res Tech VI, SR-18, #13530	1.00
MEALANI	
Agr Res Tech IV, SR-14, #12100	1.00
Agr Res Tech III, SR-11, #13205, #44867, #44868	3.00
HAMAKUA	
KONA	
Agr Res Tech V, SR-16, #00409	1.00
Agr Res Tech IV, SR-14, #22912	1.00

STATE OF HAWAIʻI

UNIVERSITY OF HAWAIʻI

UNIVERSITY OF HAWAIʻI AT MĀNOA

COLLEGE OF TROPICAL AGRICULTURE AND

HUMAN RESOURCES

ORGANIZATION CHART

HAWAII COUNTY

CHART IX-C

CHART TOTAL:	PERM	TEMP
General Funds:	25.00	--

STATE OF HAWAI'I
UNIVERSITY OF HAWAI'I
UNIVERSITY OF HAWAI'I AT MĀNOA
COLLEGE OF TROPICAL AGRICULTURE AND
HUMAN RESOURCES
ORGANIZATION CHART

MAUI COUNTY
CHART IX-D

