

STATE OF HAWAII
 UNIVERSITY OF HAWAII
 UNIVERSITY OF HAWAII AT MĀNOA
**OFFICE OF THE VICE CHANCELLOR
 FOR ACADEMIC AFFAIRS**

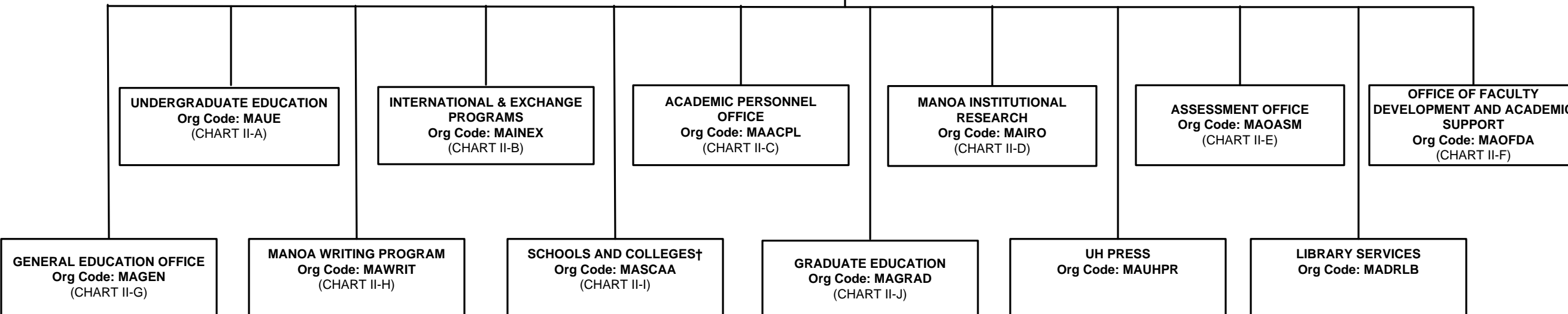
Position Organization Chart
 Chart II

OFFICE OF THE CHANCELLOR

**OFFICE OF THE VICE CHANCELLOR FOR
 ACADEMIC AFFAIRS**
Org Code: MAVCAA

Vice Chancellor for Academic Affairs, #89104	1.00
Administrative Officer, PBB, #78429	1.00
Associate Vice Chancellor for Academic Affairs, #89169	1.00
Admin & Fiscal Support Sp, PBA, #78055	1.00
IT Specialist, PBB, #78914	1.00
Academic Affairs Program Officer, #89009	1.00
Educational Spec, PBA, #79837	1.00
Academic Affairs Program Officer, #89434	1.00
Human Resources Specialist, PBC, #79166	1.00
Administrative Officer, PBB, #78229	1.00

DEPARTMENT TOTAL:	PERM	TEMP
General Funds:	111.00	1.00



† Except John A. Burns School of Medicine, William S. Richardson School of Law, and the School of Ocean and Earth Science and Technology

CHART TOTAL:	PERM	TEMP
General Funds:	10.00	--

STATE OF HAWAI'I
 UNIVERSITY OF HAWAI'I
 UNIVERSITY OF HAWAI'I AT MĀNOA
 OFFICE OF THE VICE CHANCELLOR
 FOR ACADEMIC AFFAIRS
UNDERGRADUATE EDUCATION

Position Organization Chart
 Chart II-A

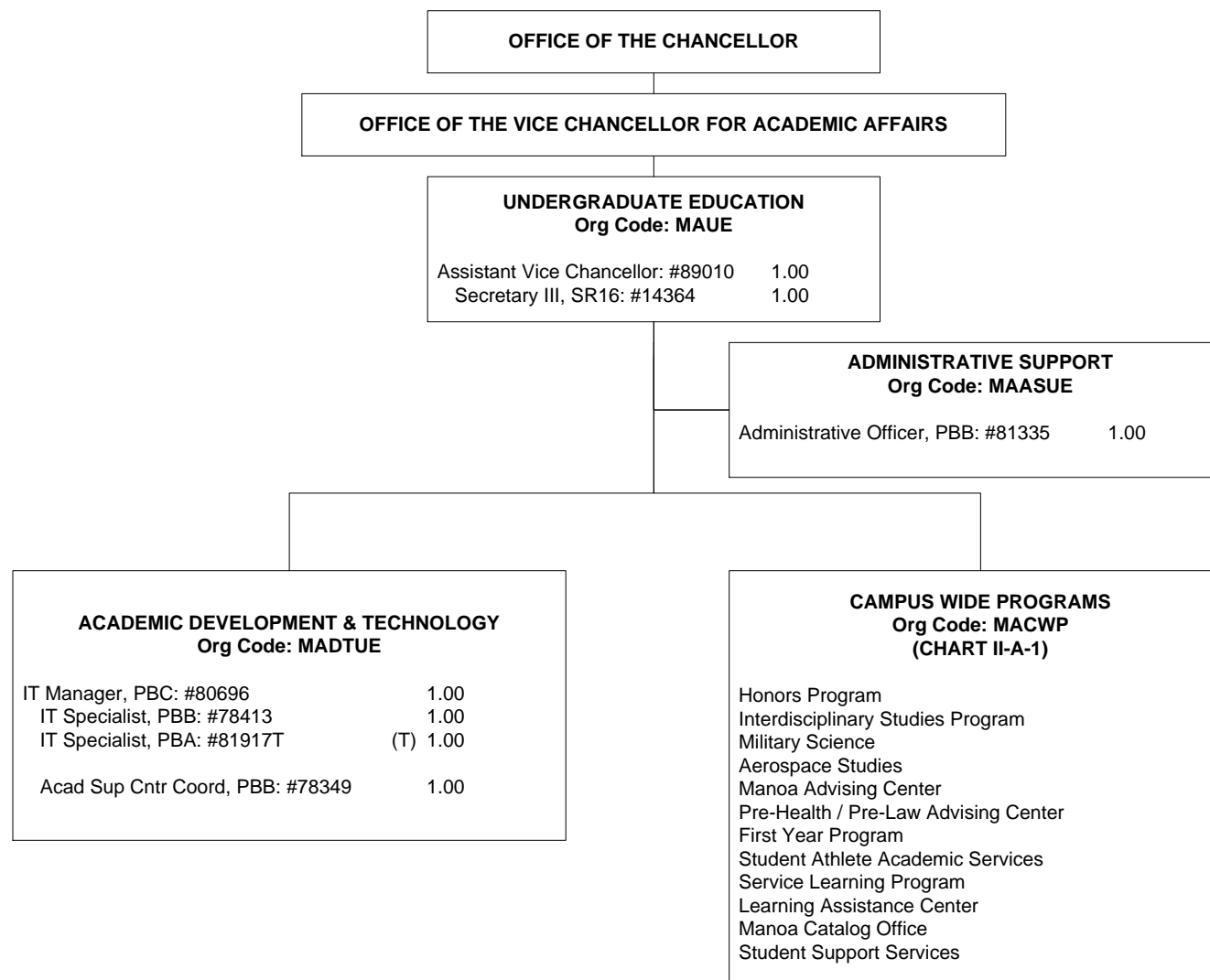
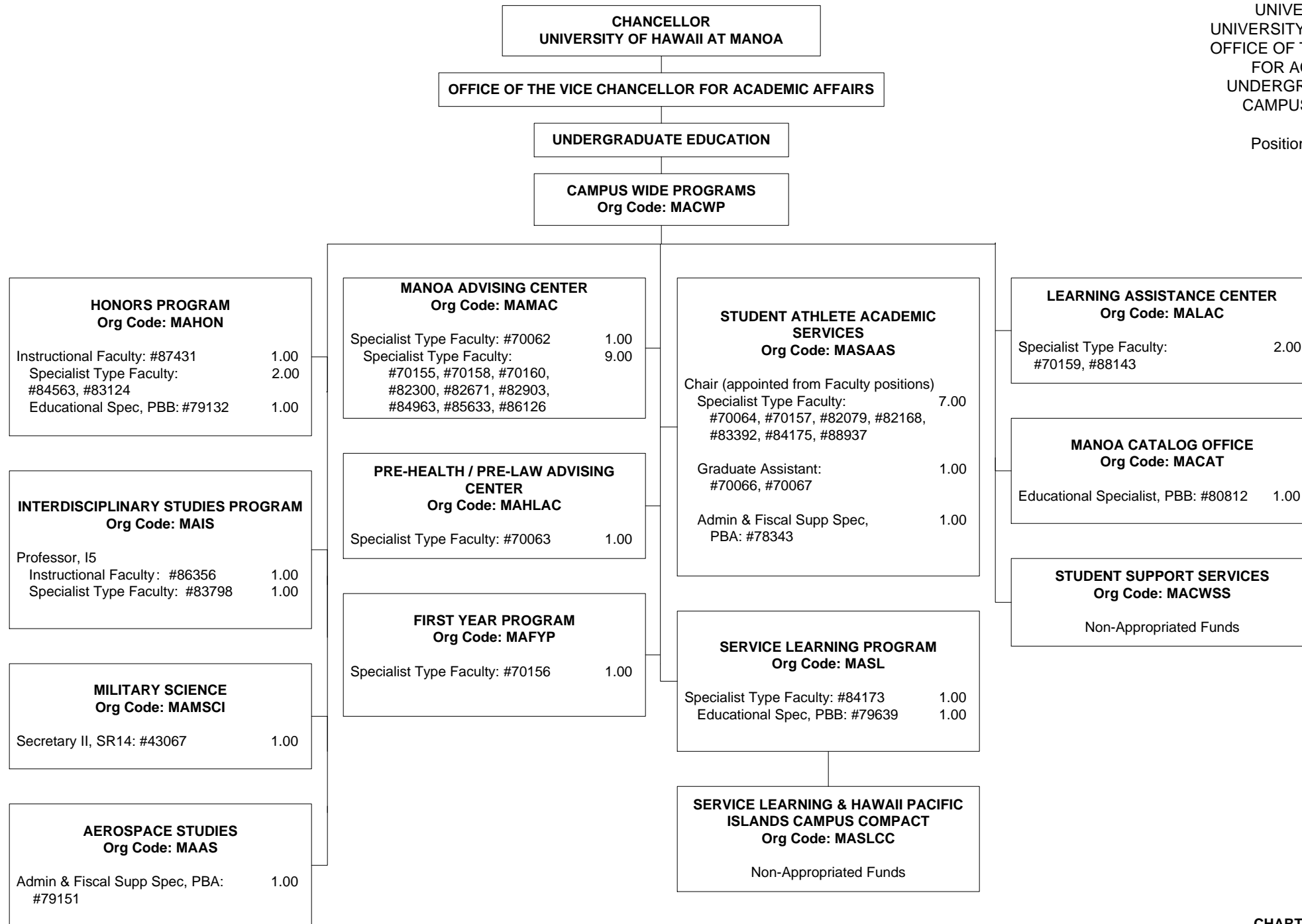
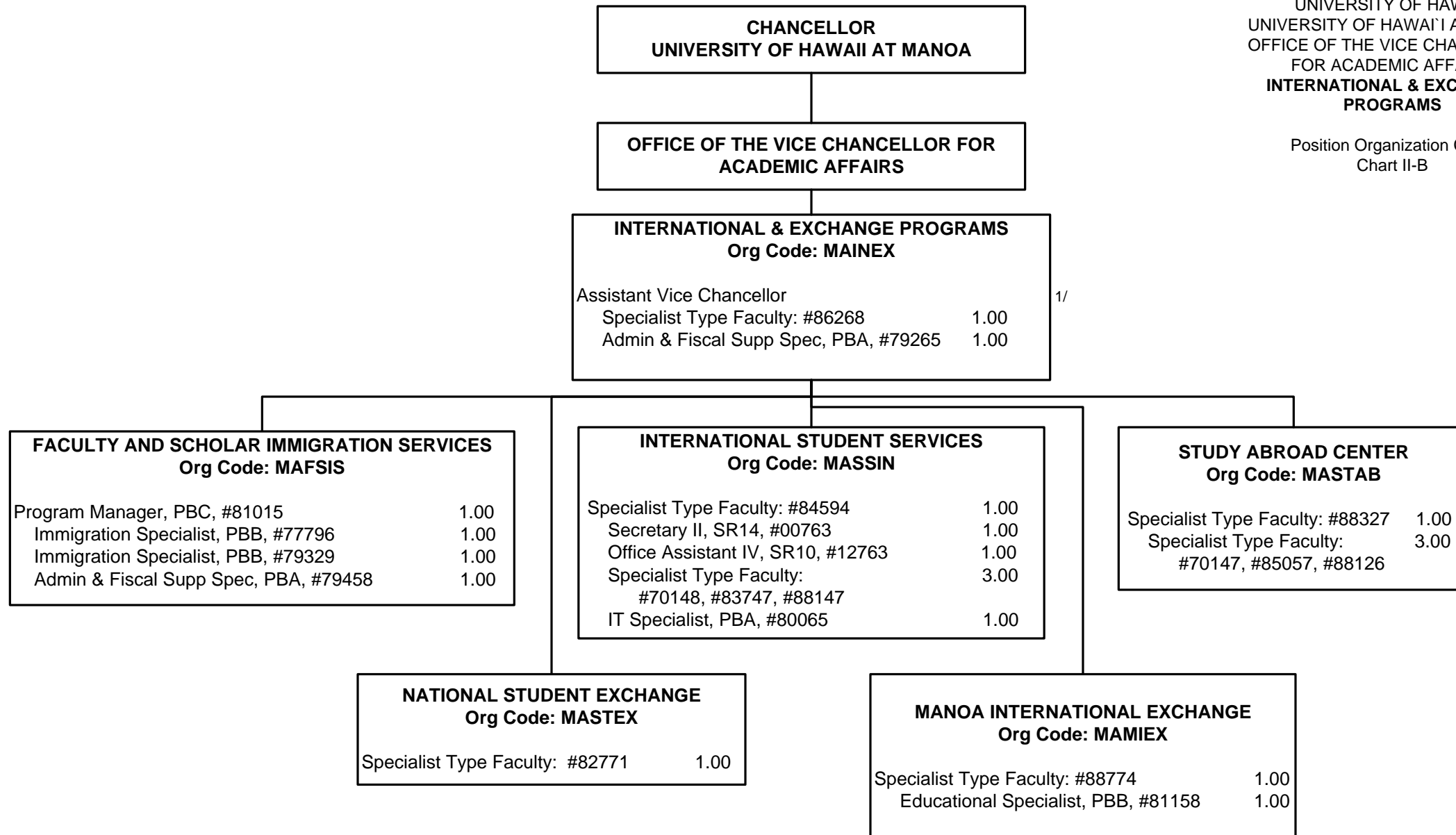


CHART TOTAL: **PERM** **TEMP**
 General Funds: 6.00 1.00

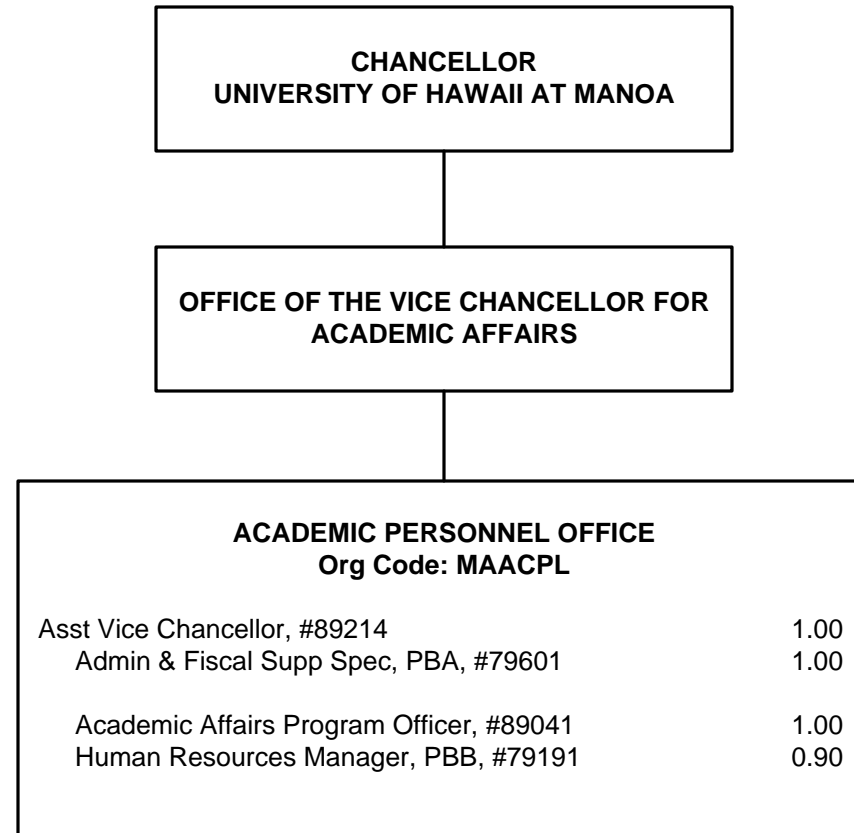


STATE OF HAWAII
 UNIVERSITY OF HAWAII
 UNIVERSITY OF HAWAII AT MĀNOA
 OFFICE OF THE VICE CHANCELLOR
 FOR ACADEMIC AFFAIRS
**INTERNATIONAL & EXCHANGE
 PROGRAMS**

Position Organization Chart
 Chart II-B



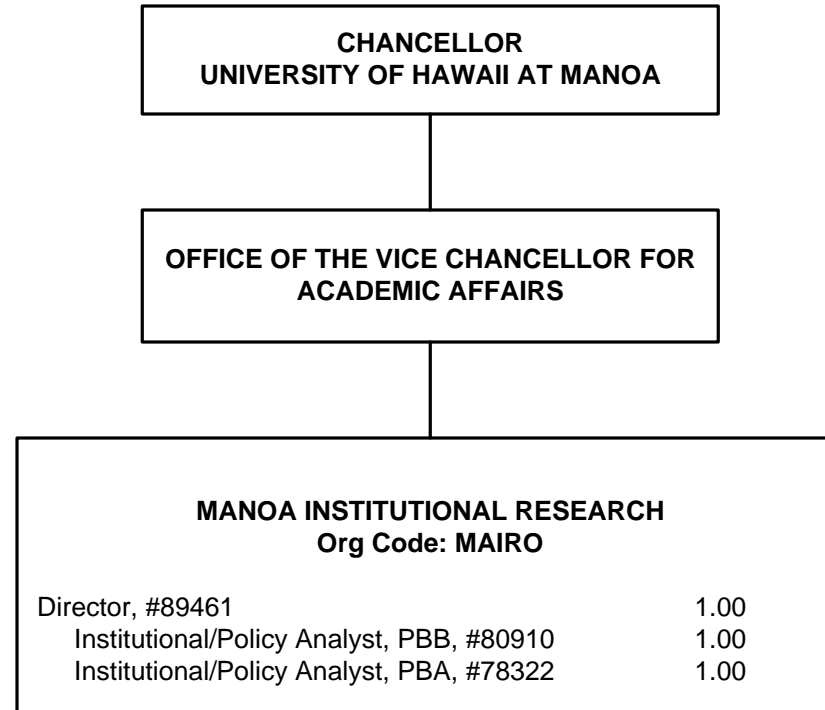
1/ Asst Vice Chancellor of International & Exchange Programs appointed from a Dean position.



STATE OF HAWAII
 UNIVERSITY OF HAWAII
 UNIVERSITY OF HAWAII AT MĀNOA
 OFFICE OF THE VICE CHANCELLOR
 FOR ACADEMIC AFFAIRS
ACADEMIC PERSONNEL OFFICE

Position Organization Chart
 Chart II-C

1/ Human Resources Mgr #79191 - 0.10 FTE from 99002F allocated; not established.

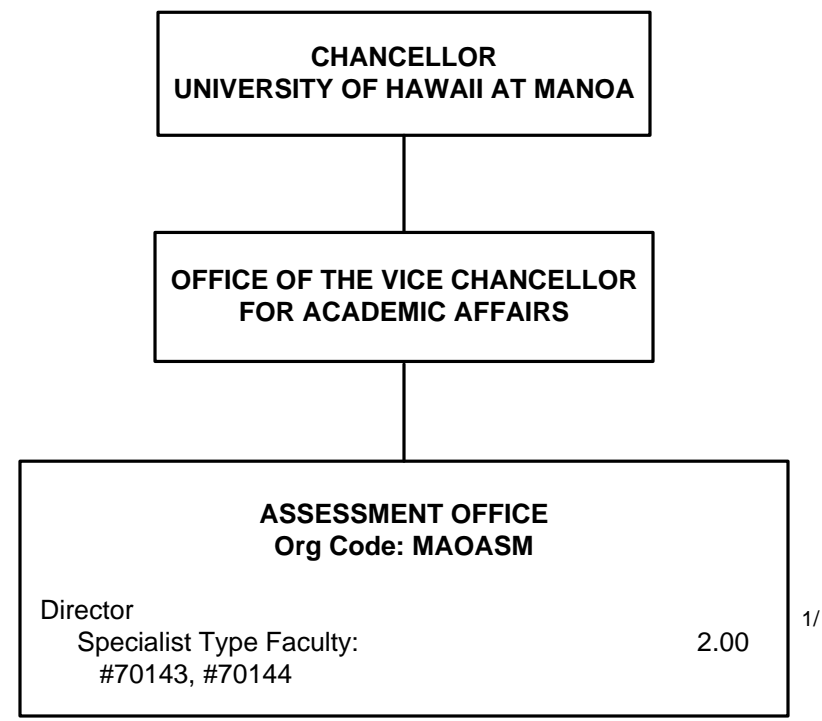


STATE OF HAWAII
 UNIVERSITY OF HAWAII
 UNIVERSITY OF HAWAII AT MĀNOA
 OFFICE OF THE VICE CHANCELLOR
 FOR ACADEMIC AFFAIRS
MĀNOA INSTITUTIONAL RESEARCH

Position Organization Chart
 Chart II-D

STATE OF HAWAII
UNIVERSITY OF HAWAII
UNIVERSITY OF HAWAII AT MĀNOA
OFFICE OF THE VICE CHANCELLOR
FOR ACADEMIC AFFAIRS
ASSESSMENT OFFICE

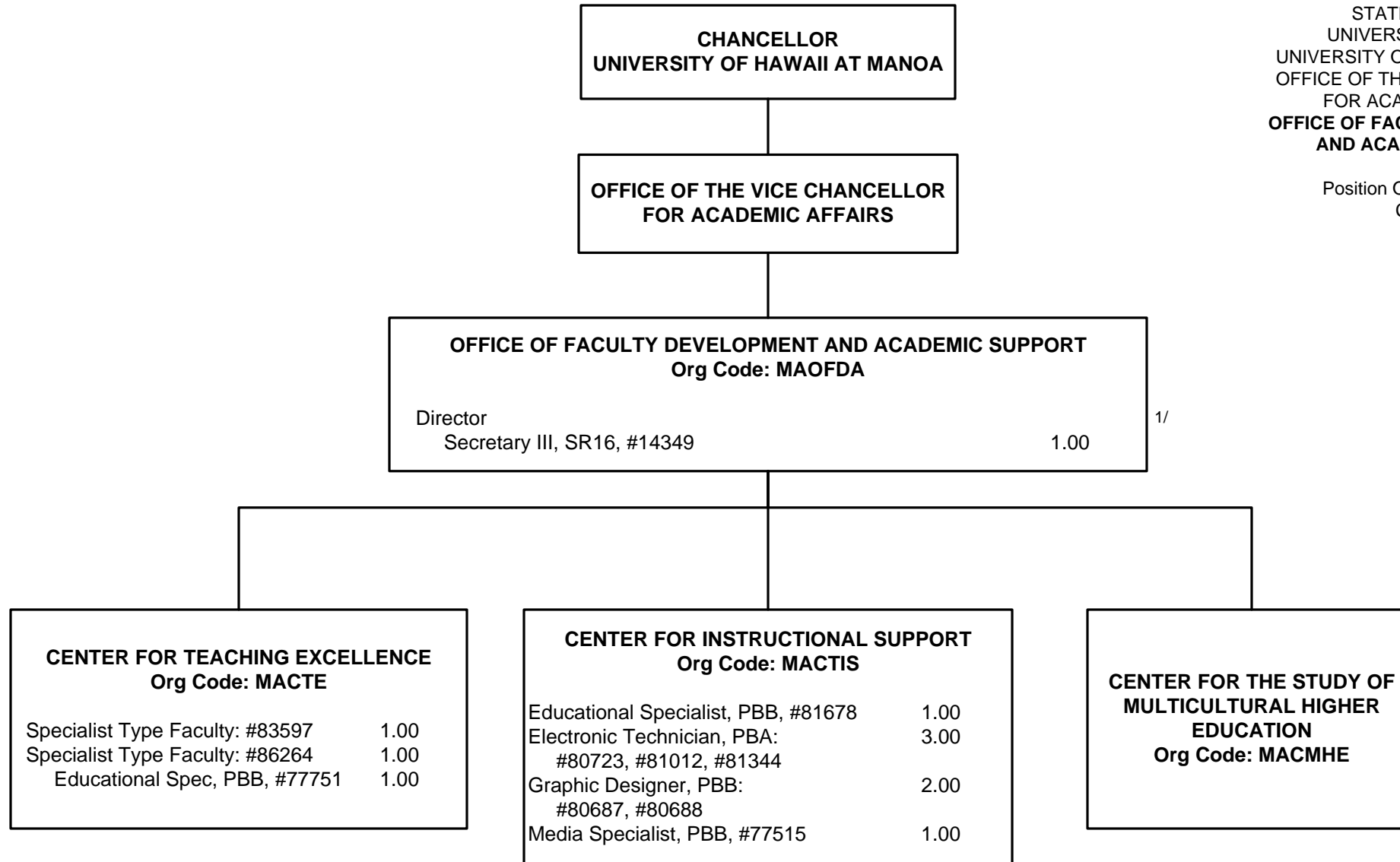
Position Organization Chart
Chart II-E



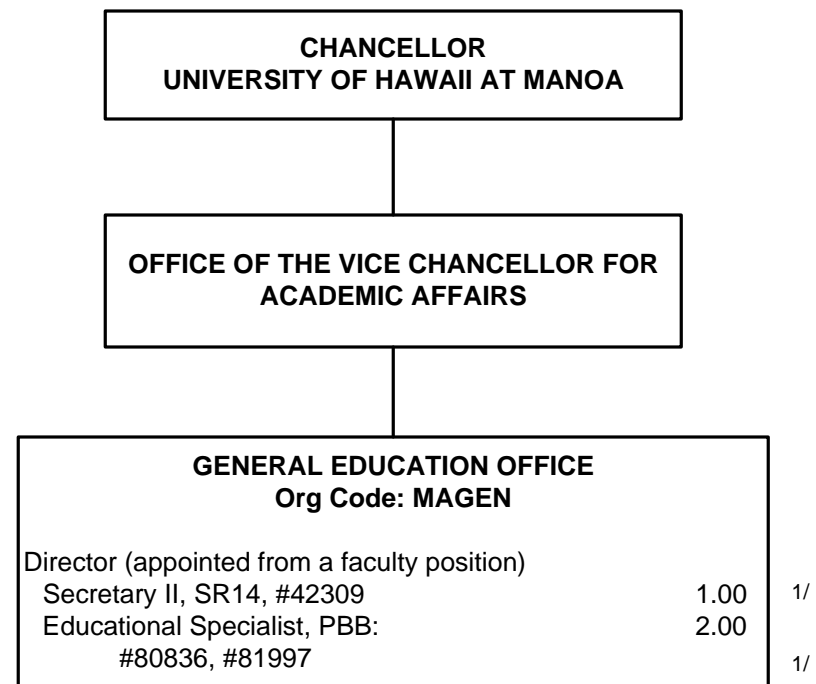
1/ Director appointed from a faculty position to oversee Assessment operations.

STATE OF HAWAII
 UNIVERSITY OF HAWAII
 UNIVERSITY OF HAWAII AT MĀNOA
 OFFICE OF THE VICE CHANCELLOR
 FOR ACADEMIC AFFAIRS
**OFFICE OF FACULTY DEVELOPMENT
 AND ACADEMIC SUPPORT**

Position Organization Chart
 Chart II-F



1/ Director appointed from a faculty position to oversee OFDAS operations.



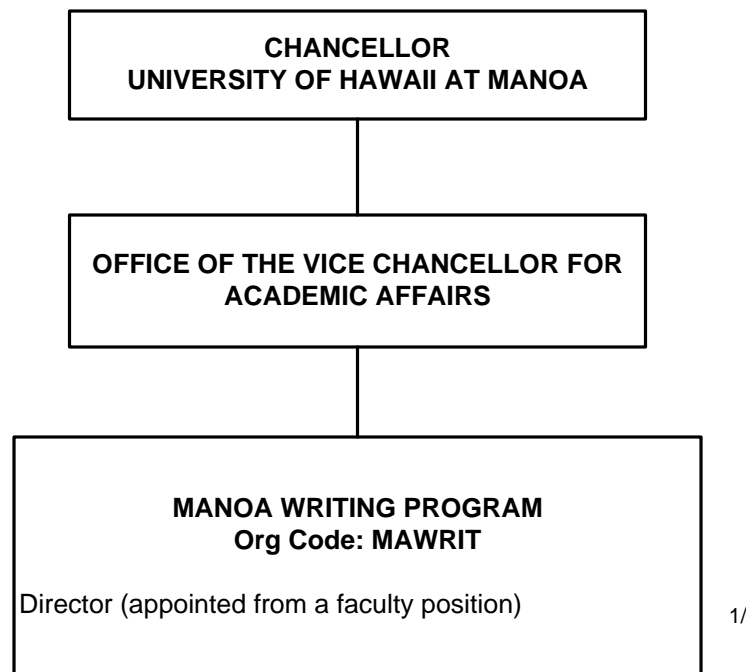
STATE OF HAWAII
 UNIVERSITY OF HAWAII
 UNIVERSITY OF HAWAII AT MĀNOA
 OFFICE OF THE VICE CHANCELLOR
 FOR ACADEMIC AFFAIRS
GENERAL EDUCATION OFFICE

Position Organization Chart
 Chart II-G

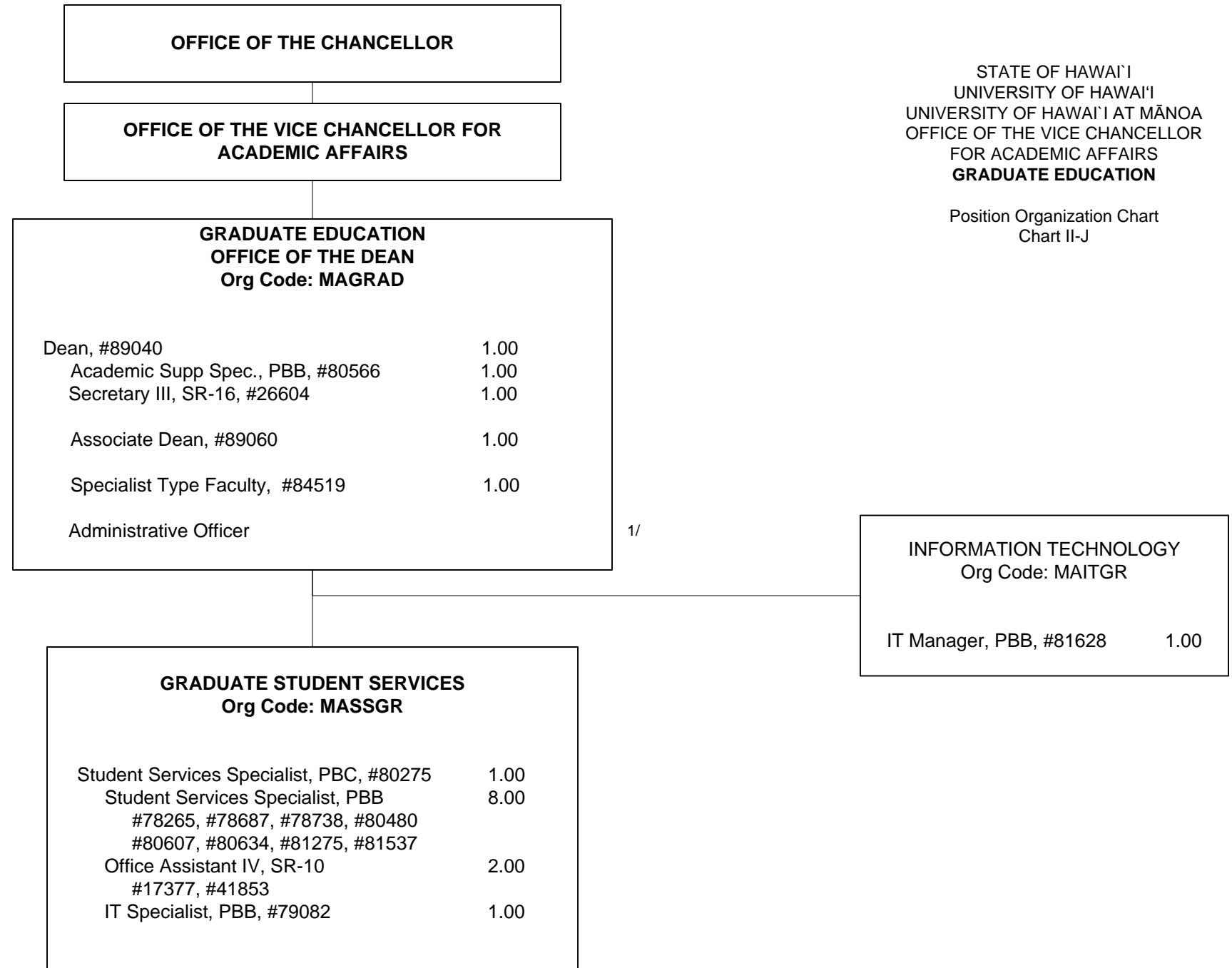
1/ Secretary II, #42309 and Educ Spec, #81997 partially support the Mānoa Writing Program.

STATE OF HAWAII
UNIVERSITY OF HAWAII
UNIVERSITY OF HAWAII AT MĀNOA
OFFICE OF THE VICE CHANCELLOR
FOR ACADEMIC AFFAIRS
MĀNOA WRITING PROGRAM

Position Organization Chart
Chart II-H



1/ Positions in the General Education Office partially support this Office: Secretary II, SR14, #42309 and Educational Specialists, PBB, #80836, #81997. Primary supervisor is General Education Office Director.



1/ Administrative Officer in Office of the Dean position number and count to be requested.