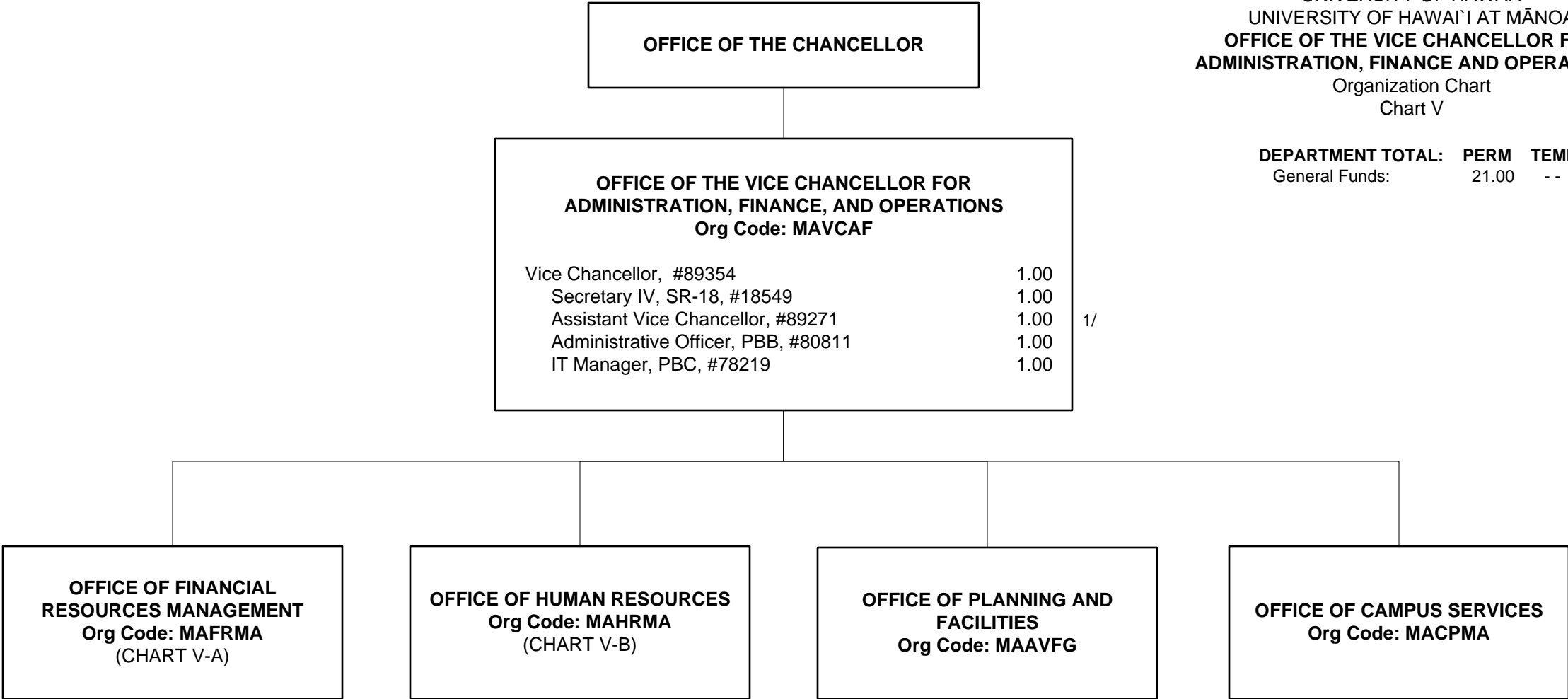
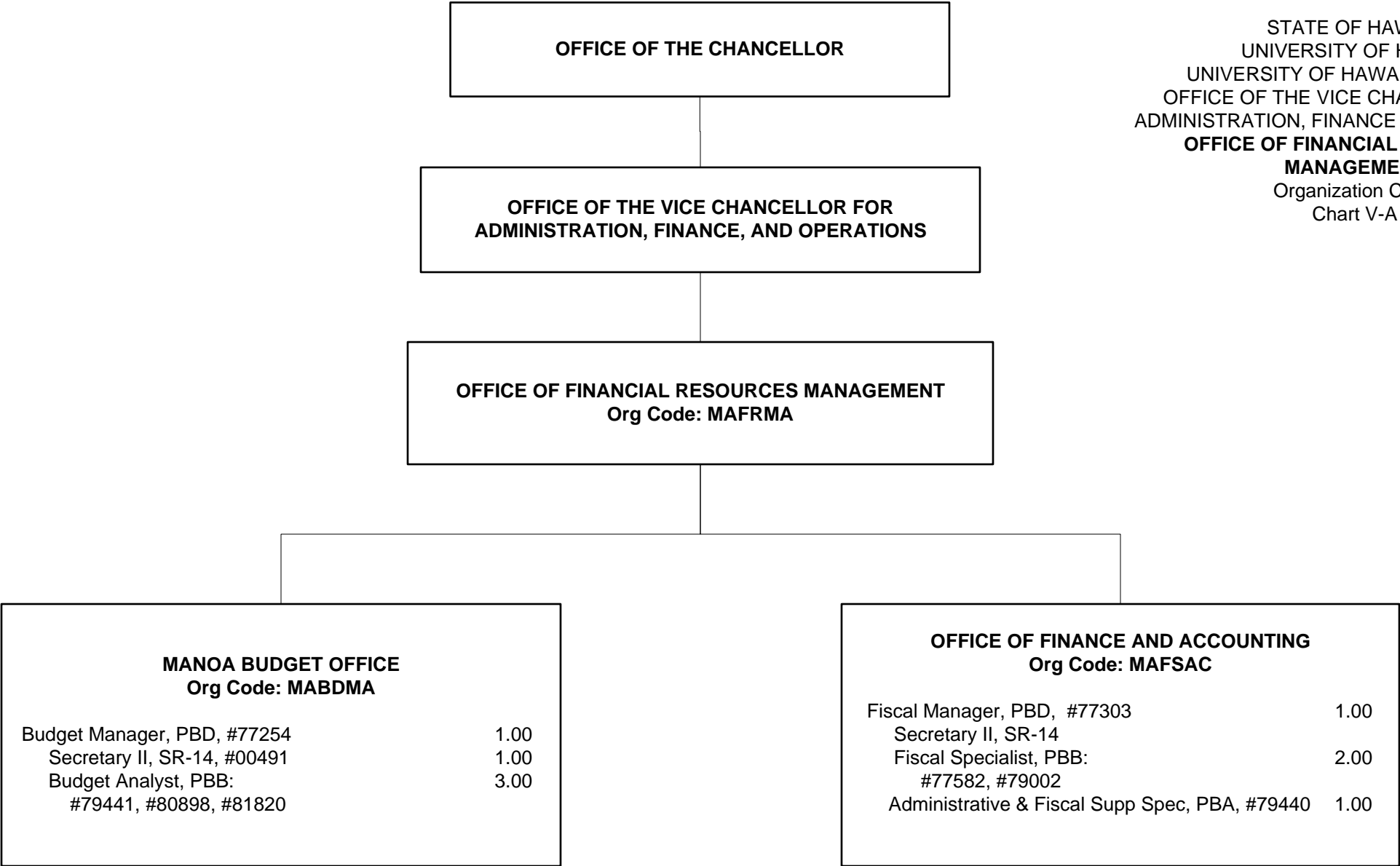


STATE OF HAWAI'I
UNIVERSITY OF HAWAI'I
UNIVERSITY OF HAWAI'I AT MĀNOA
OFFICE OF THE VICE CHANCELLOR FOR
ADMINISTRATION, FINANCE AND OPERATIONS
Organization Chart
Chart V

DEPARTMENT TOTAL: PERM TEMP
General Funds: 21.00 - -

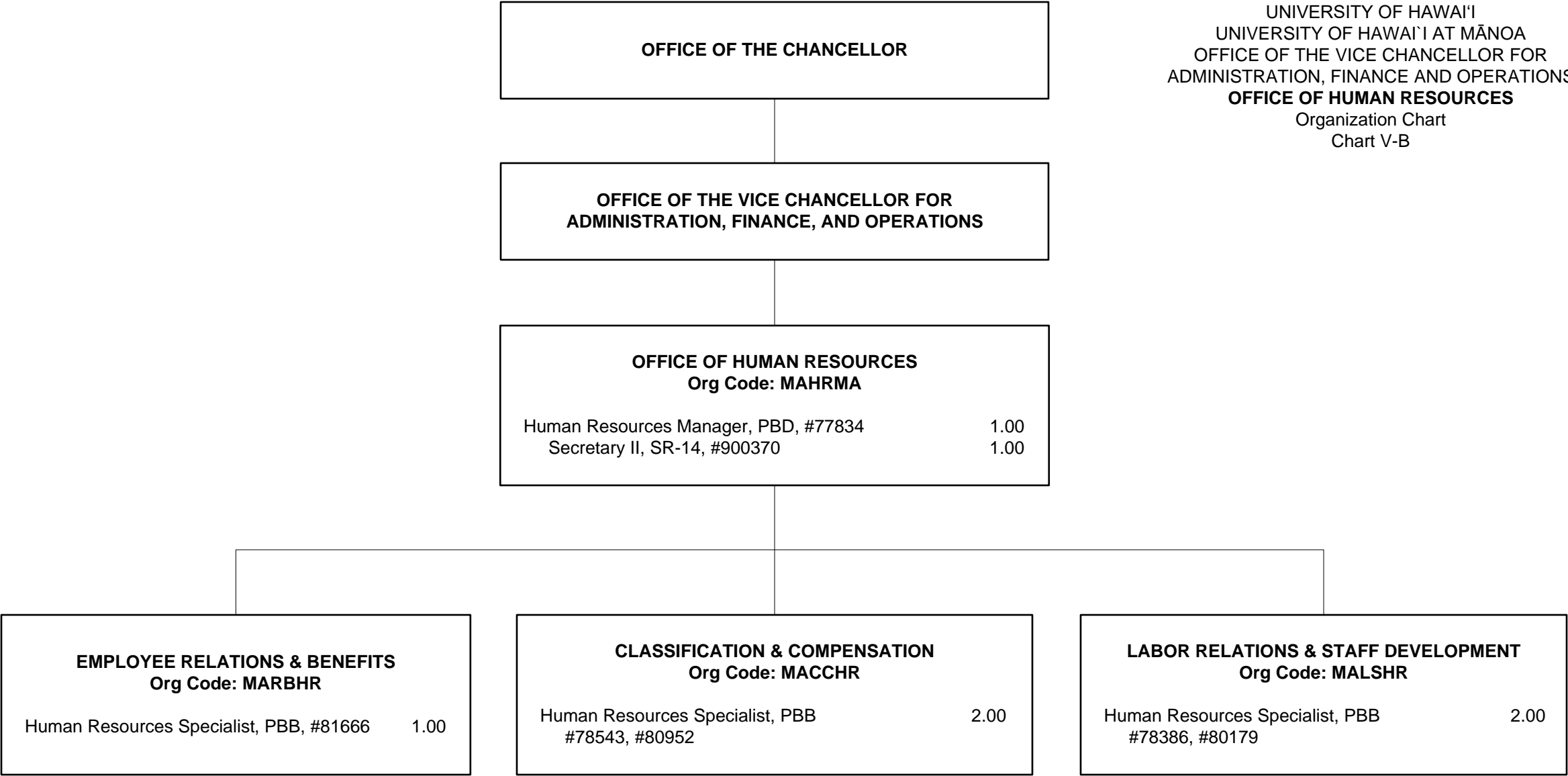


1/ Assistant Vice Chancellor, #89271 to be redescribed



STATE OF HAWAI'I
UNIVERSITY OF HAWAI'I
UNIVERSITY OF HAWAI'I AT MĀNOA
OFFICE OF THE VICE CHANCELLOR FOR
ADMINISTRATION, FINANCE AND OPERATIONS
**OFFICE OF FINANCIAL RESOURCES
MANAGEMENT**
Organization Chart
Chart V-A

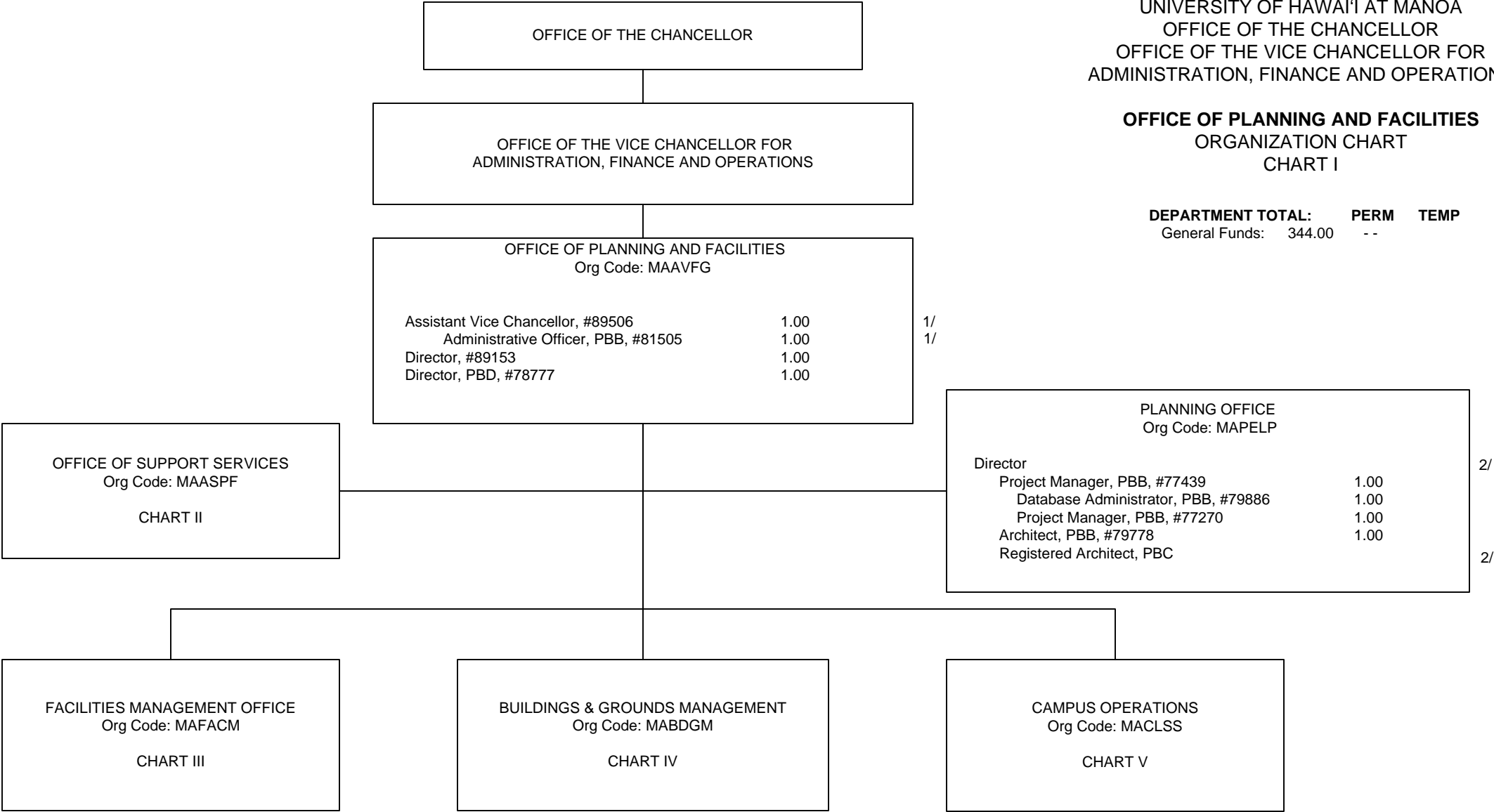
1/ Secretary II - new, pending approval



STATE OF HAWAI'I
UNIVERSITY OF HAWAI'I
UNIVERSITY OF HAWAI'I AT MĀNOA
OFFICE OF THE CHANCELLOR
OFFICE OF THE VICE CHANCELLOR FOR
ADMINISTRATION, FINANCE AND OPERATIONS

OFFICE OF PLANNING AND FACILITIES
ORGANIZATION CHART
CHART I

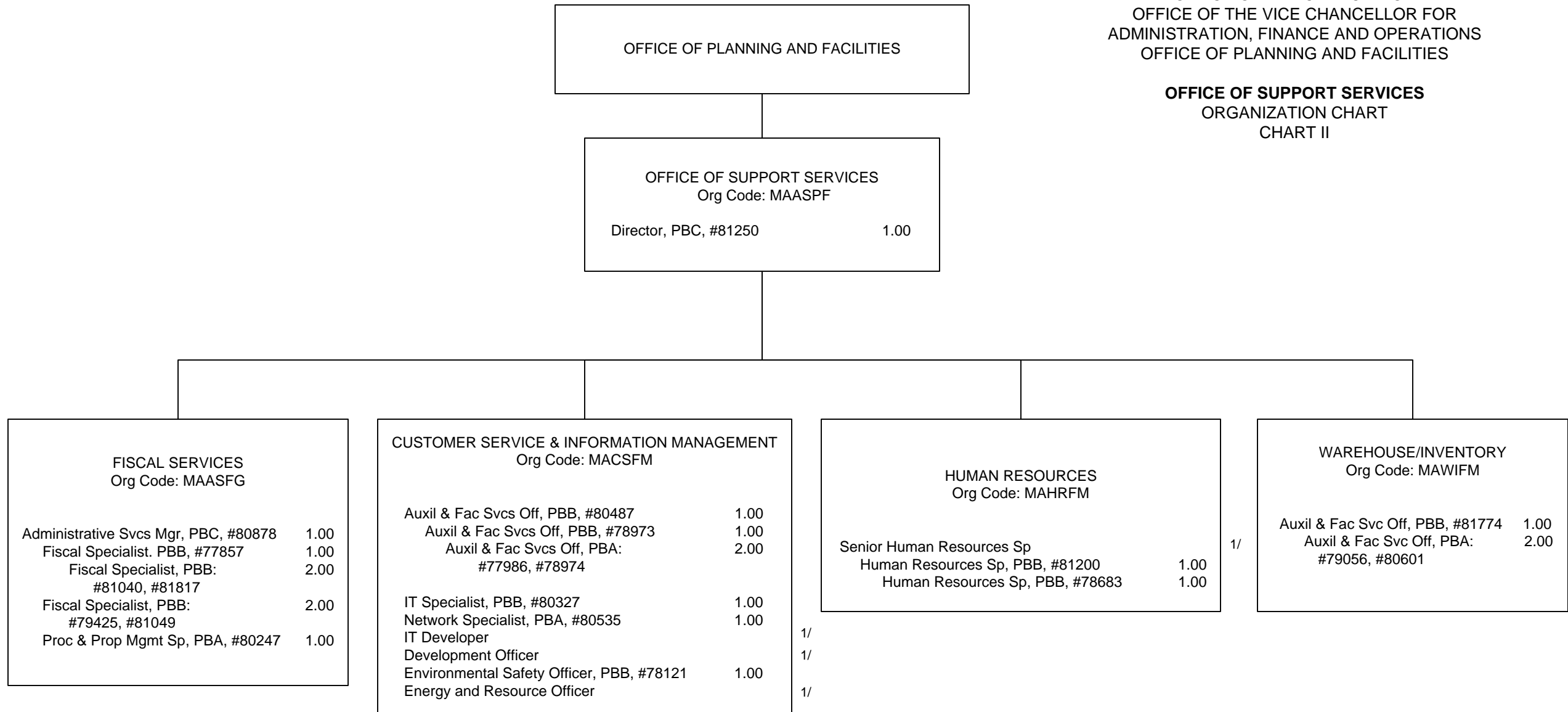
DEPARTMENT TOTAL: PERM TEMP
General Funds: 344.00 - -



1/ Asst Vice Chancellor, #89506 and Admin Ofcr, #81505 in Office of Planning and Facilities to be re-described.
2/ Director and Registered Architect positions in Planning Office are new, pending approval.

STATE OF HAWAII
UNIVERSITY OF HAWAI'I AT MĀNOA
OFFICE OF THE CHANCELLOR
OFFICE OF THE VICE CHANCELLOR FOR
ADMINISTRATION, FINANCE AND OPERATIONS
OFFICE OF PLANNING AND FACILITIES

OFFICE OF SUPPORT SERVICES
ORGANIZATION CHART
CHART II



1/ New, pending approval:

- IT Developer, Development Officer, and Energy and Resource Officer positions in Customer Service & Information Management; and
- Senior Human Resources Spec position in Human Resources.

CHART TOTAL:
General Funds:

PERM TEMP
20.00 - -

STATE OF HAWAII

UNIVERSITY OF HAWAI'I AT MĀNOA

OFFICE OF THE CHANCELLOR

OFFICE OF THE VICE CHANCELLOR FOR

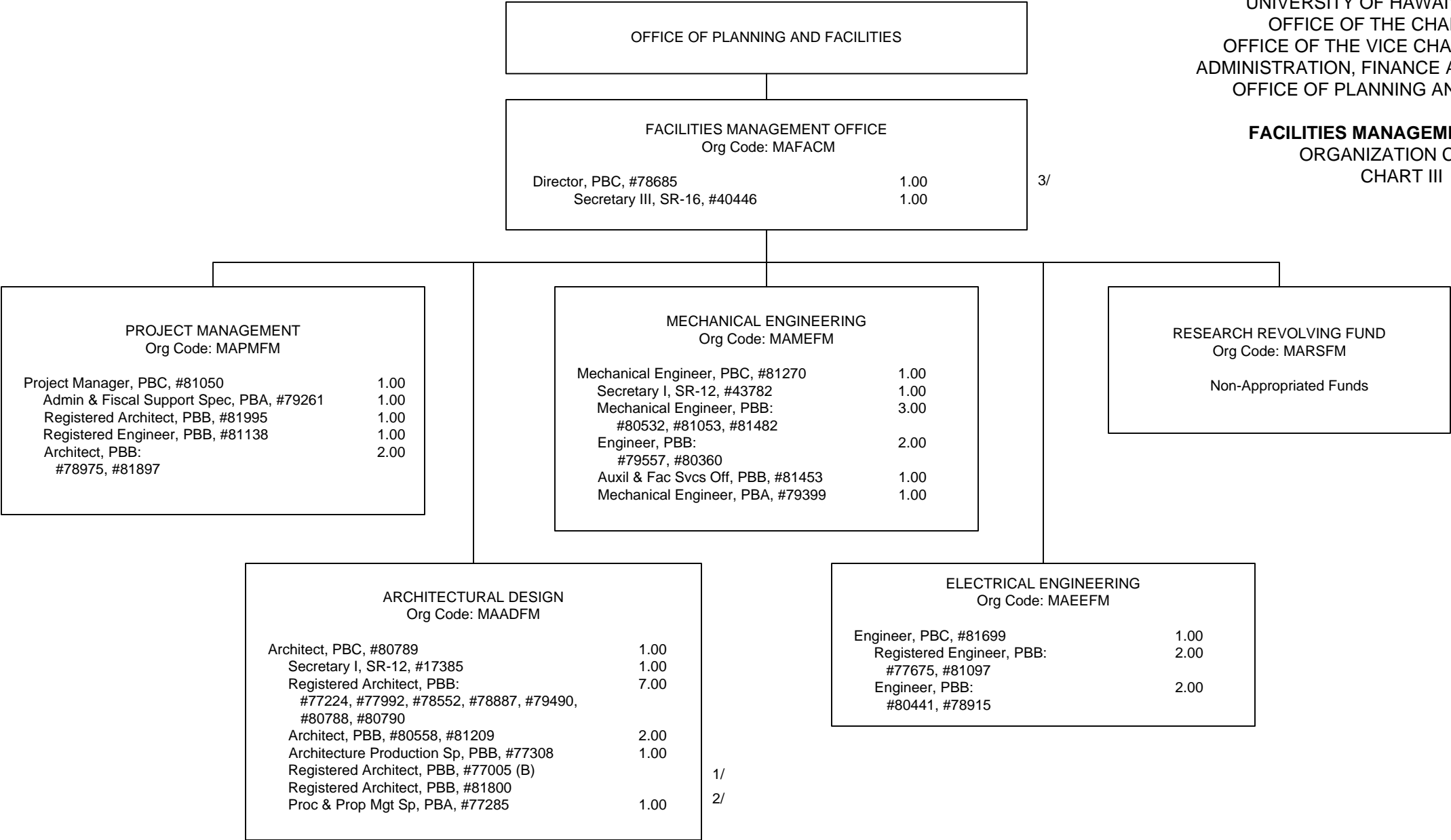
ADMINISTRATION, FINANCE AND OPERATIONS

OFFICE OF PLANNING AND FACILITIES

FACILITIES MANAGEMENT OFFICE

ORGANIZATION CHART

CHART III



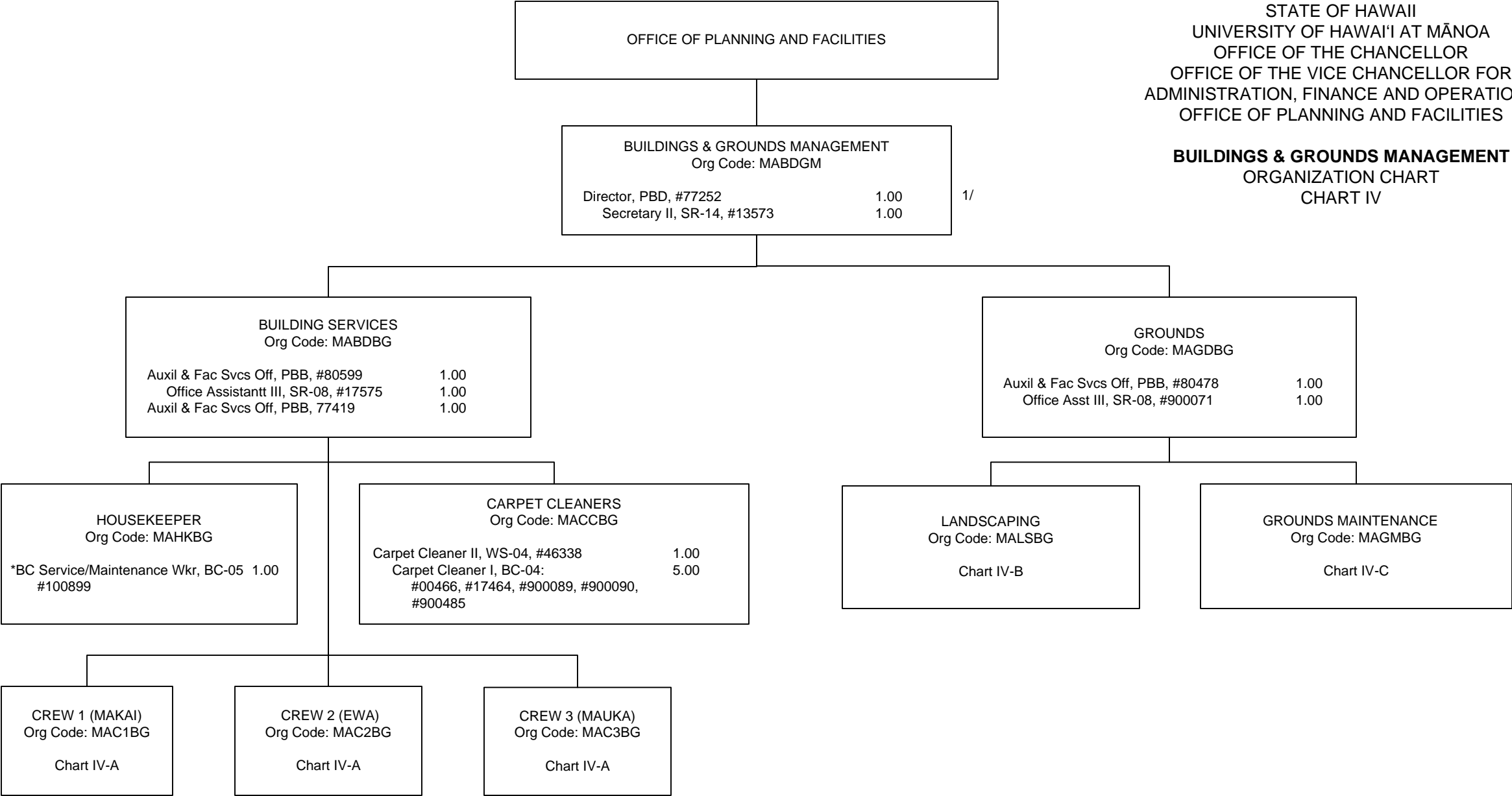
1/ Registered Architect, #77055 in Architectural Design not included in our position count, position belongs to and funded by Student Housing.

2/ Registered Architect, #81800 in Architectural Design not included in our position count, position belongs to and funded by EEO/AA.

3/ Director, #78685 in Facilities Management Office to be re-described.

STATE OF HAWAII
UNIVERSITY OF HAWAII AT MĀNOA
OFFICE OF THE CHANCELLOR
OFFICE OF THE VICE CHANCELLOR FOR
ADMINISTRATION, FINANCE AND OPERATIONS
OFFICE OF PLANNING AND FACILITIES

BUILDINGS & GROUNDS MANAGEMENT
ORGANIZATION CHART
CHART IV



1/ Director, #77252 functional code: Auxil & Fac Svcs Mgr

BUILDINGS & GROUNDS MANAGEMENT
Org Code: MABDGM

BUILDING SERVICES
Org Code: MABDBG

STATE OF HAWAII
UNIVERSITY OF HAWAII AT MĀNOA
OFFICE OF THE CHANCELLOR
OFFICE OF THE VICE CHANCELLOR FOR
ADMINISTRATION, FINANCE AND OPERATIONS
OFFICE OF PLANNING AND FACILITIES

BUILDINGS & GROUNDS MANAGEMENT
BUILDING SERVICES
ORGANIZATION CHART
CHART IV-A

CREW 1 (MAKAI)
Org Code: MAC1BG

Janitor Supervisor II, F2-02, #22325	1.00
Janitor III, WS-02, #46220	1.00
Janitor II, BC-02: #13689, #36758, #46222, #51275, #110441, #900048	6.00
Janitor III, WS-02, #40100	1.00
Janitor II, BC-02, #00449, #08060, #9093, #13523, #17465, #21629, #900488	7.00
Janitor III, WS-02, #27233	1.00
Janitor II, BC-02: #11987, #12912, #18575, #21212, #21214, #27238, #51278, #111641	8.00
Janitor III, WS-02, #00457	1.00
Janitor II, BC-02: #00459, #12914, #13698, #22331, #35866	5.00
Janitor III, WS-02, #51274	1.00
Janitor II, BC-02: #08445, #11076, #12907, #21213, #32624, #35867, #35869, #51276	8.00
Janitor III, WS-02, #13515	1.00
Janitor II, BC-02: #05843, #08444, #12491, #12903, #12908, #13688, #21633, #27234, #46245	9.00

CREW 2 (EWA)
Org Code: MAC2BG

Janitor Supervisor II, F2-02, #8053	1.00
Janitor III, WS-02, #13517	1.00
Janitor II, BC-02: #08442, #11984, #12489, #12492, #21210, #22334, #32625, #36226, #46484	9.00
Janitor III, WS-02, #13518	1.00
Janitor II, BC-02: #13525, #22330, #32621, #32626, #44090, #110668	6.00
Janitor III, WS-02, #40097	1.00
Janitor II, BC-02: #08061, #10105, #13524, #13696, #36757, #38808, #46246, #900046	8.00
Janitor III, WS-02, #35813	1.00
Janitor II, BC-02: #00448, #13528, #21211, #21630, #36228, #40096, #51277	7.00
Janitor III, WS-02, #13516	1.00
Janitor II, BC-02: #03594, #05844, #11080, #11990, #15460, #21634, #46223	7.00
Janitor III, WS-02, #11078	1.00
Janitor II, BC-02: #11077, #13697, #18573, #21627, #21631, #36759, #51279, #110439, #900047	9.00

CREW 3 (MAUKA)
Org Code: MAC3BG

Janitor Supervisor II, F2-02, #10099	1.00
Janitor III, WS-02, #12910	1.00
Janitor II, BC-02: #04882, #12905, #22323, #32623, #47533, #110442 #900049	7.00
Janitor III, WS-02, #47536	1.00
Janitor II, BC-02: #00460, #00461, #12904, #13527, #13690, #17467 #27237, #27239, #31772, #900004	10.00
Janitor III, WS-02, #21215	1.00
Janitor II, BC-02: #00465, #08059, #08062, #09090, #10104, #11988, #12909 #13521, #21632, #22328, #36227	11.00
Janitor III, WS-02, #40099	1.00
Janitor II, BC-02: #00453, #00458, #11081, #11083, #12916, #22329, #27235, #27240, #47534	9.00
Janitor III, WS-02, #14601	1.00
Janitor II, BC-02: #11079, #11084, #13520, #13699, #18572, #22946, #47532	7.00
Janitor III, WS-02, #14600	1.00
Janitor II, BC-02: #00452, #00462, #09089, #11991	4.00

CHART TOTAL: PERM TEMP
General Funds: 158.00 - -

STATE OF HAWAII

UNIVERSITY OF HAWAI'I AT MĀNOA

OFFICE OF THE CHANCELLOR

OFFICE OF THE VICE CHANCELLOR FOR

ADMINISTRATION, FINANCE AND OPERATIONS

OFFICE OF PLANNING AND FACILITIES

BUILDINGS & GROUNDS MANAGEMENT

GROUNDS

LANDSCAPING

ORGANIZATION CHART

CHART IV-B

GROUNDS

Org Code: MAGDBG

LANDSCAPING

Org Code: MALSBG

Maintenance & Repair Supvr I, F1-09, #45703

1.00

PESTICIDE CONTROL

Org Code: MAPCBG

Chemical Treatment Worker II, BC-07, #32633

1.00

IRRIGATION

Org Code: MAIRBG

Sprinkler System Repairer, BC-05:

#111862, #900065

2.00

LABOR SUPPORT

Org Code: MALABG

General Labor I, BC-02, #900064

1.00

MASON

Org Code: MAMSBG

Mason I, BC-10, #900552

1.00

TREE TRIMMER

Org Code: MATTBG

Tree Trimmer/Truck Driver, BC-05: 2.00

#08071, #47593

Tree Trimmer, BC-07: 2.00

#900078, #900079

REFUSE

Org Code: MARFBG

Heavy Truck Driver, BC-07: 2.00

#11074, #49296

Refuse Collector, BC-05: 2.00

#08058, #11075

EQUIPMENT SUPPORT

Org Code: MAESBG

Street Sweeper Operator, BC-09, #21333 1.00

Equipment Operator III, BC-09: 3.00

#00829, #05845, #46218

Mechanical Repair Worker, BC-09, #46219 1.00

Mechanic Repair Helper, BC-05, #08055 1.00

NURSERY

Org Code: MASRBG

Nursery Worker II, WS-05, #48951 1.00

Nursery Worker I, BC-05: 3.00

#07475, #46193, #47571

CHART TOTAL:

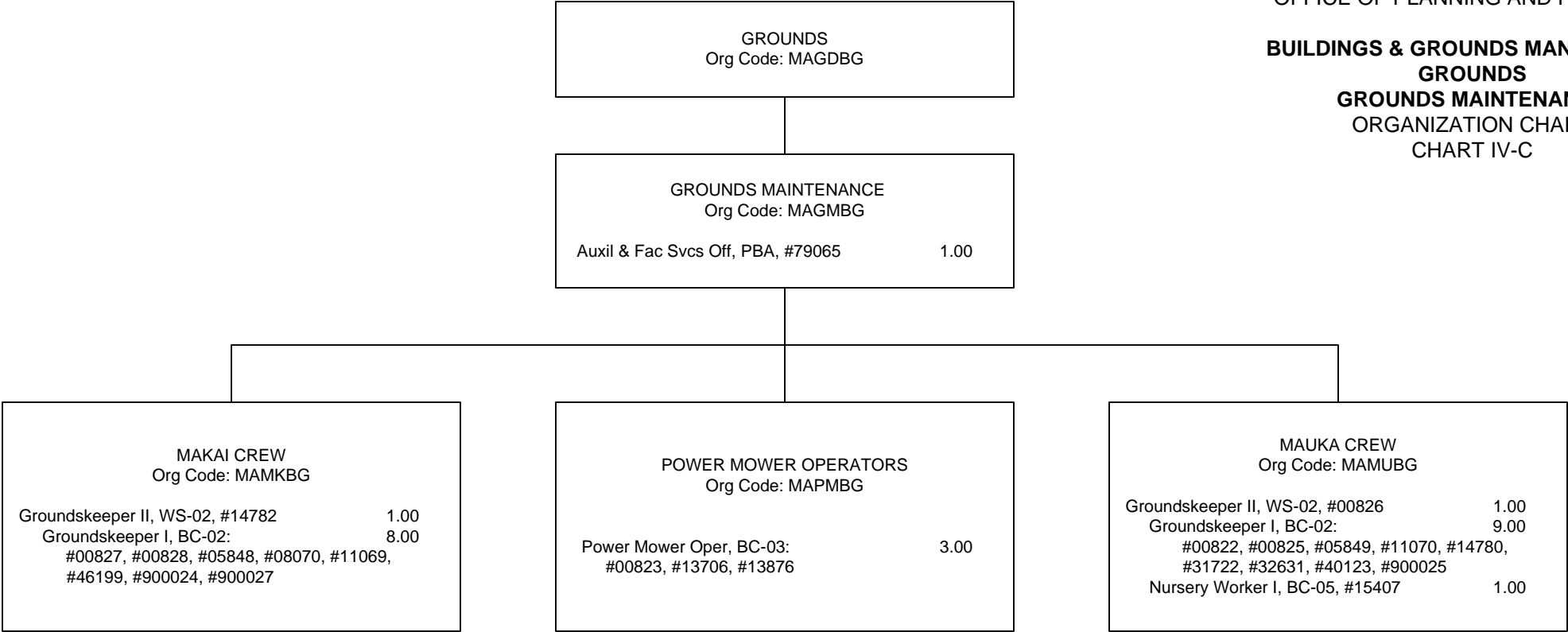
General Funds:

PERM TEMP

24.00 - -

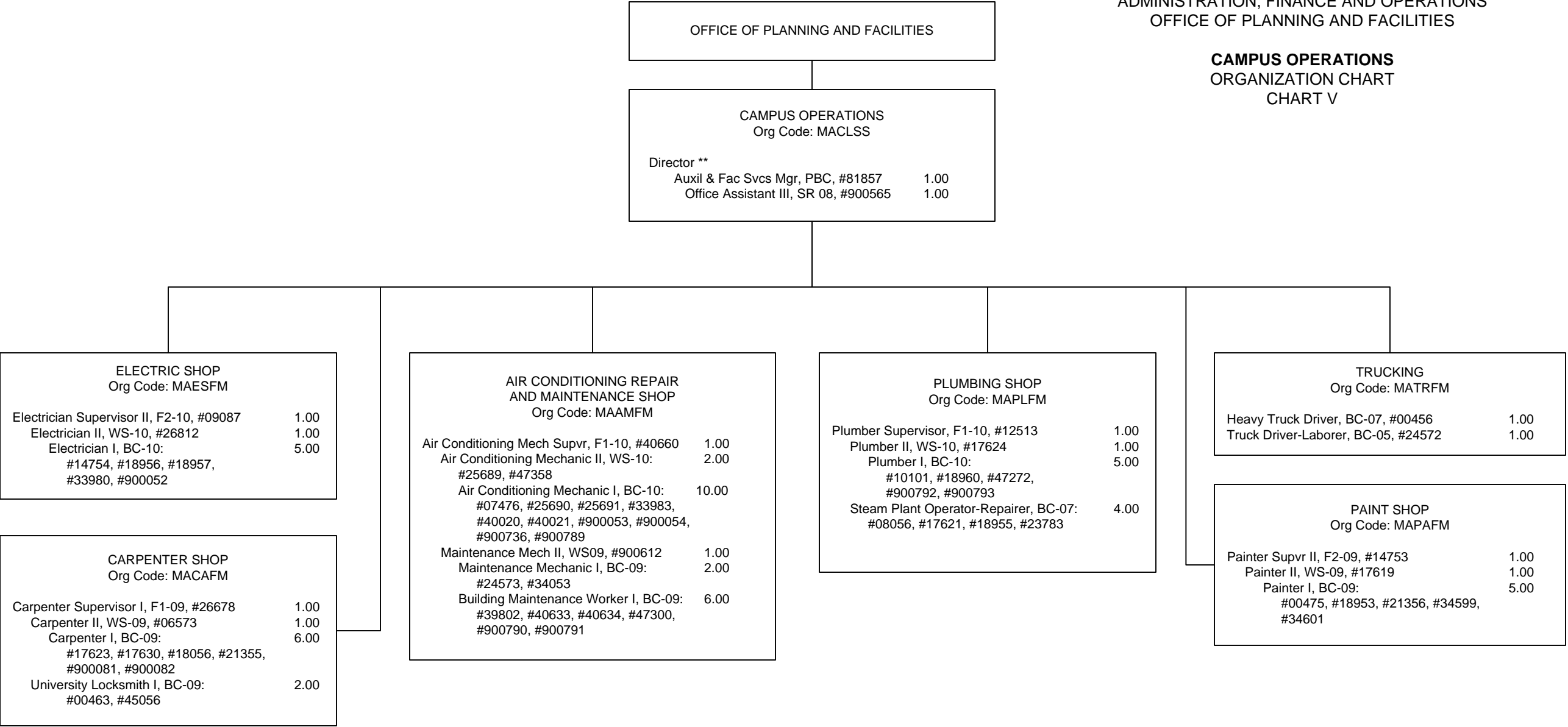
STATE OF HAWAII
UNIVERSITY OF HAWAI'I AT MĀNOA
OFFICE OF THE CHANCELLOR
OFFICE OF THE VICE CHANCELLOR FOR
ADMINISTRATION, FINANCE AND OPERATIONS
OFFICE OF PLANNING AND FACILITIES

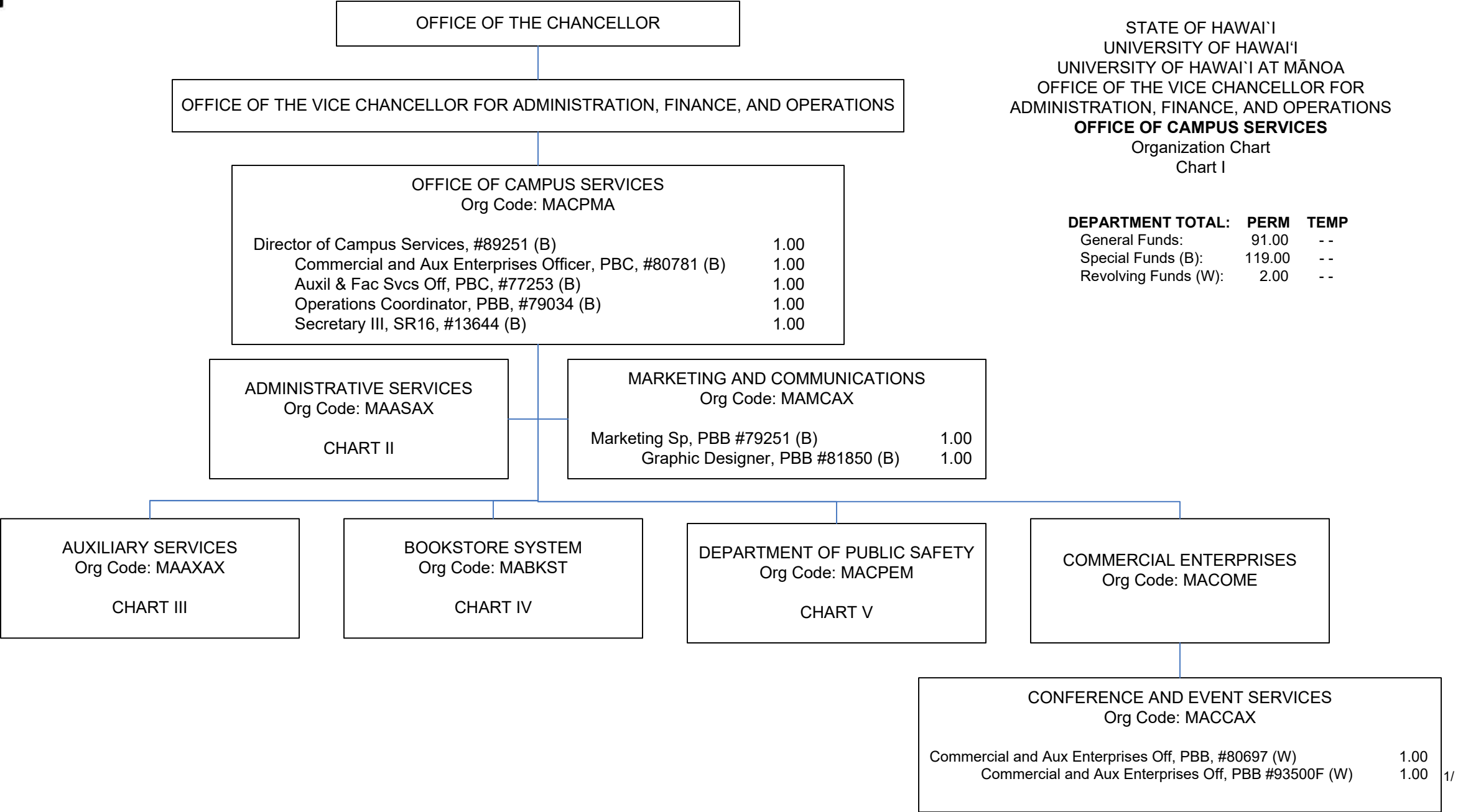
BUILDINGS & GROUNDS MANAGEMENT
GROUNDS
GROUNDS MAINTENANCE
ORGANIZATION CHART
CHART IV-C



STATE OF HAWAII
UNIVERSITY OF HAWAI'I AT MĀNOA
OFFICE OF THE CHANCELLOR
OFFICE OF THE VICE CHANCELLOR FOR
ADMINISTRATION, FINANCE AND OPERATIONS
OFFICE OF PLANNING AND FACILITIES

CAMPUS OPERATIONS
ORGANIZATION CHART
CHART V





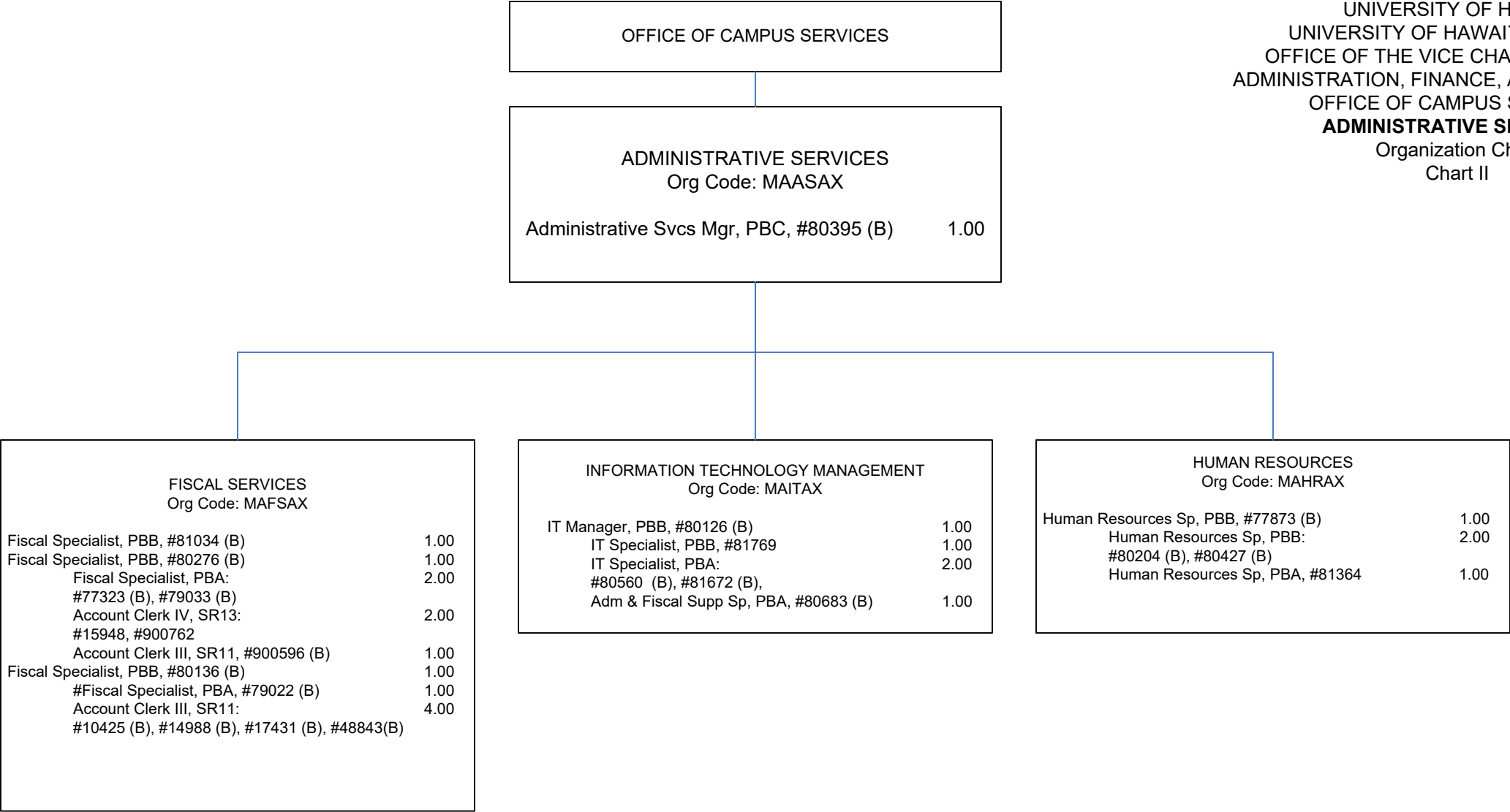
STATE OF HAWAI'I
UNIVERSITY OF HAWAI'I
UNIVERSITY OF HAWAI'I AT MĀNOA
OFFICE OF THE VICE CHANCELLOR FOR
ADMINISTRATION, FINANCE, AND OPERATIONS
OFFICE OF CAMPUS SERVICES
Organization Chart
Chart I

DEPARTMENT TOTAL:	PERM	TEMP
General Funds:	91.00	--
Special Funds (B):	119.00	--
Revolving Funds (W):	2.00	--

1/ To be established

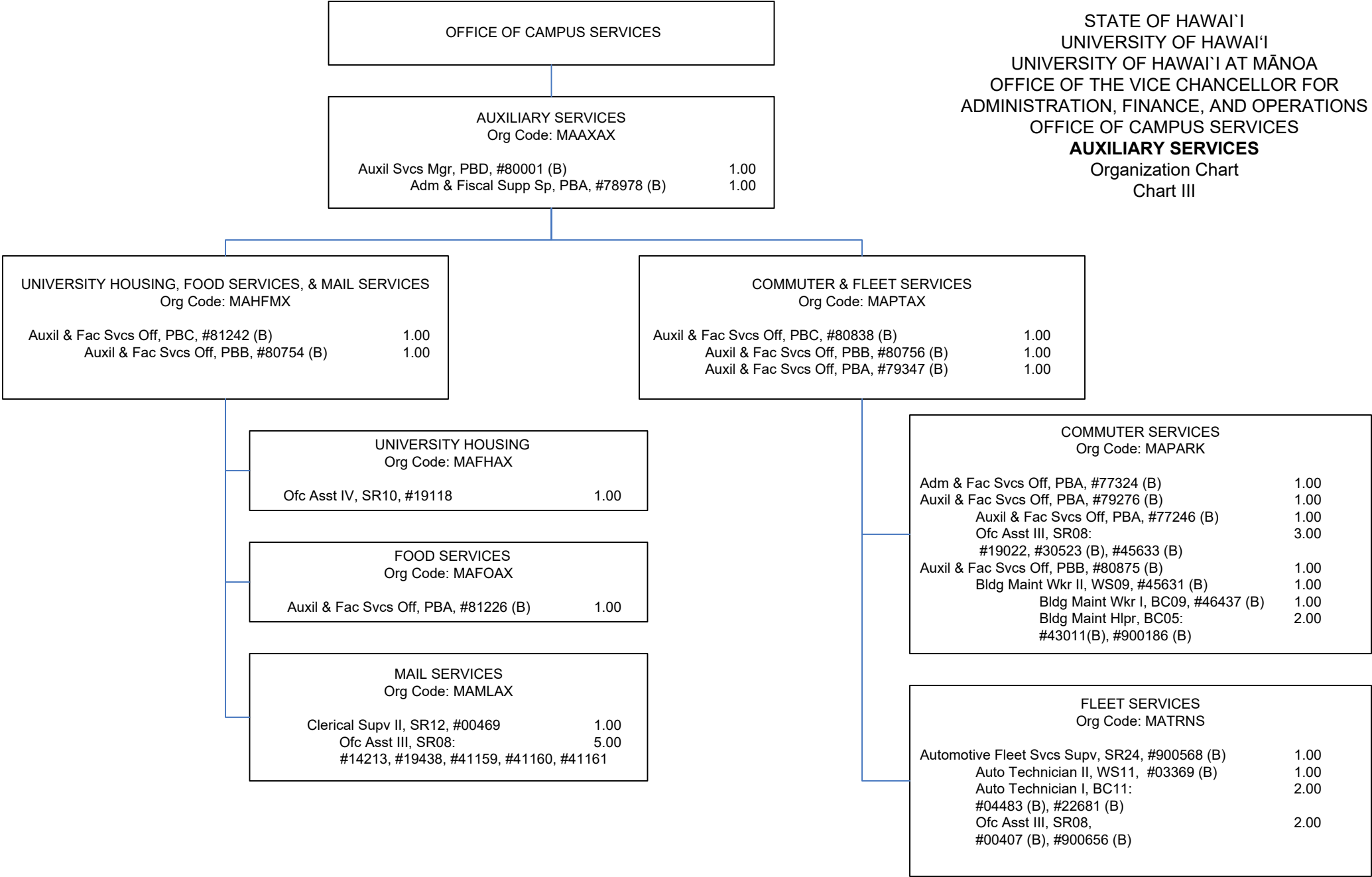
CHART TOTAL:	PERM	TEMP
Special Funds (B):	7.00	--
Revolving Funds (W):	2.00	--

STATE OF HAWAI'I
UNIVERSITY OF HAWAI'I
UNIVERSITY OF HAWAI'I AT MĀNOA
OFFICE OF THE VICE CHANCELLOR FOR
ADMINISTRATION, FINANCE, AND OPERATIONS
OFFICE OF CAMPUS SERVICES
ADMINISTRATIVE SERVICES
Organization Chart
Chart II



(B) Special fund positions abolished but retained position count: #14867, #79035, #900127

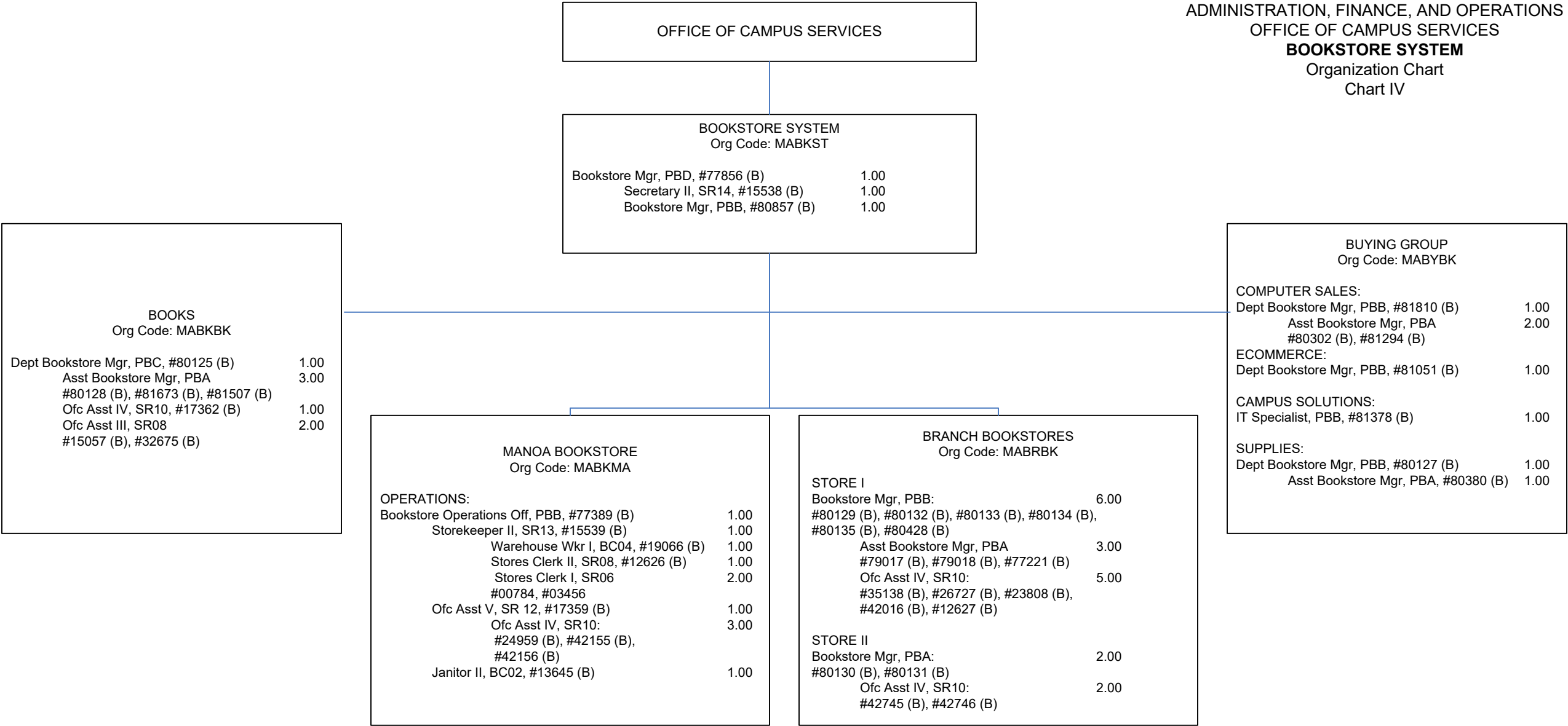
CHART TOTAL:	PERM	TEMP
General Funds:	4.00	--
Special Funds (B):	22.00	--



(B) Special fund position abolished but retained count: #12979

CHART TOTAL:	PERM	TEMP
General Funds:	8.00	--
Special Funds (B):	25.00	--

STATE OF HAWAI'I
UNIVERSITY OF HAWAI'I
UNIVERSITY OF HAWAI'I AT MĀNOA
OFFICE OF THE VICE CHANCELLOR FOR
ADMINISTRATION, FINANCE, AND OPERATIONS
OFFICE OF CAMPUS SERVICES
BOOKSTORE SYSTEM
Organization Chart
Chart IV



(B) Special Funds Positions, CS RIF 08-15-95: #94356F, #06801, #13945, #17357, #17358, #17361, #19065, #24637
(B) Special Funds Positions, CS RIF 07-14-98: #18089, #22931, #27887
(B) Special fund positions abolished but retained count: #13642, #13643, #13944, #17356, #17360, #23809, #27876, #27843, #47164, #17651

CHART TOTAL:	PERM	TEMP
General Funds:	2.00	--
Special Funds (B):	65.00	--

OFFICE OF CAMPUS SERVICES		
DEPARTMENT OF PUBLIC SAFETY Org Code: MACPEM		
Auxil & Fac Svc Mgr, PBD, #80477		1.00
Safety/Security Sp, PBB, #78184, #78327, #78865, #79691, #79836		5.00
Admin & Fiscal Support Sp, PBA, #81244		1.00
Office Assistant III, SR08, #45894		1.00
Auxil & Fac Svc Off, PBB, #81195, #81189		2.00
University Security Off II, SR16, #03574, #13852, #39544, #48514, #111648, #900578, #900697, #900745, #900761		9.00
University Security Off I, SR14, #03575, #13542, #13851, #22487, #24542, #24575, #24576, #28608, #28609, #28610, #28611, #29174, #30526, #36659, #36660, #36661, #36667, #36668, #39488, #39489, #39491, #39492, #39493, #45375, #48515, #48516, #49280, #49281, #49282, #110514, #900313, #900314, #900316, #900318, #900319, #900320, #900566, #900755, #900756, #900757, #900758, #900759, #900760, #900764, #900765, #900766, #900767, #900768, #900769, #900770, #900771, #900772, #900773, #900774, #900775, #900776, #900777, #900778		58.00