

OFFICE OF THE CHANCELLOR

OFFICE OF THE VICE CHANCELLOR FOR STUDENTS  
Org Code: MAVCS

Vice Chancellor for Students, #89325	1.00
Operations Coordinator, PBB, #79316	1.00
Associate Vice Chancellor, #89309	1.00
Secretary III, SR16, #14337	1.00
Assistant Vice Chancellor, #89133	1.00
Assistant Vice Chancellor, #89479	1.00
Specialist Type Faculty: #82637, #83035, #82630	3.00
IT Specialist, PBB, #78217	1.00
Web Developer, PBB, #78218	1.00
IT Specialist, PBA, #78462	1.00
Director of Student Affairs, #89298	1.00

1/  
2/  
3/

STATE OF HAWAII  
UNIVERSITY OF HAWAII  
UNIVERSITY OF HAWAII AT MĀNOA  
OFFICE OF THE VICE CHANCELLOR FOR  
STUDENTS

ORGANIZATION CHART  
Chart IV

DEPARTMENT TOTAL:	PERM	TEMP
General Funds:	191.00	4.00
Special Funds (B):	96.00	--
Revolving Funds (W):	18.25	--

ADMINISTRATIVE SERVICES OFFICE  
Org Code: MAASVS

Administrative Svcs Mgr, PBC, #80146	1.00
Fiscal Specialist, PBB, #78065	1.00
Administrative Officer, PBB, #80089	1.00
Human Resources Specialist, PBB, #81879	1.00
Human Resources Asst V, SR13, #44556	1.00

OFFICE OF THE DEAN OF STUDENTS  
Org Code: MADNST

STUDENT LIFE &  
DEVELOPMENT  
Org Code: MASLD  
(Chart IV-A)

MĀNOA CAREER  
CENTER  
Org Code: MAMCC  
(Chart IV-B)

COUNSELING &  
STUDENT  
DEVELOPMENT  
Org Code: MADRCL  
(Chart IV-D)

UNIVERSITY HEALTH  
SERVICES  
Org Code: MADRHW  
(Chart IV-E)

JUDICIAL AFFAIRS  
Org Code: MAJDAF  
(Chart IV-F)

STUDENT HOUSING  
SERVICES  
Org Code: MASHS  
(Chart IV-G)

STUDENT EQUITY, EXCELLENCE, AND DIVERSITY  
Org Code: MASEED  
(Chart IV-C)

CHILDREN'S CENTER  
Org Code: MACC  
(Chart IV-C)

COLLEGE  
OPPORTUNITIES  
PROGRAM  
Org Code: MACOP  
(Chart IV-C)

KOKUA  
Org Code: MAKOKU  
(Chart IV-C)

OFFICE OF  
MULTICULTURAL  
STUDENT SERVICES  
Org Code: MAMULT  
(Chart IV-C)

WOMEN'S CENTER  
Org Code: MAWC  
(Chart IV-C)

ENROLLMENT MANAGEMENT  
Org Code: MAEM  
(Chart IV-H)

OFFICE OF  
ADMISSIONS  
Org Code: MAOAEM  
(Chart IV-H)

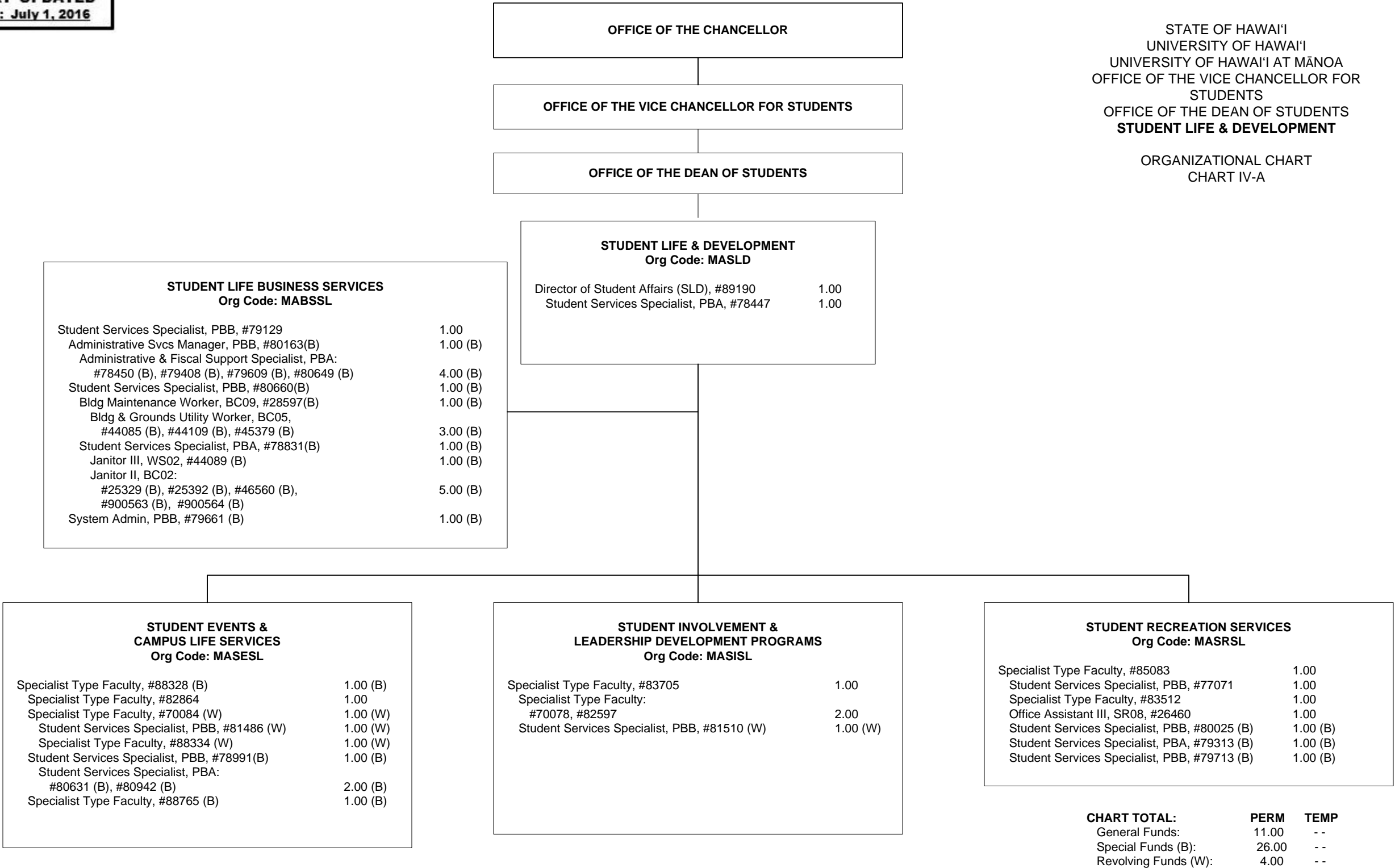
OFFICE OF  
REGISTRAR  
Org Code: MARGEM  
(Chart IV-H)

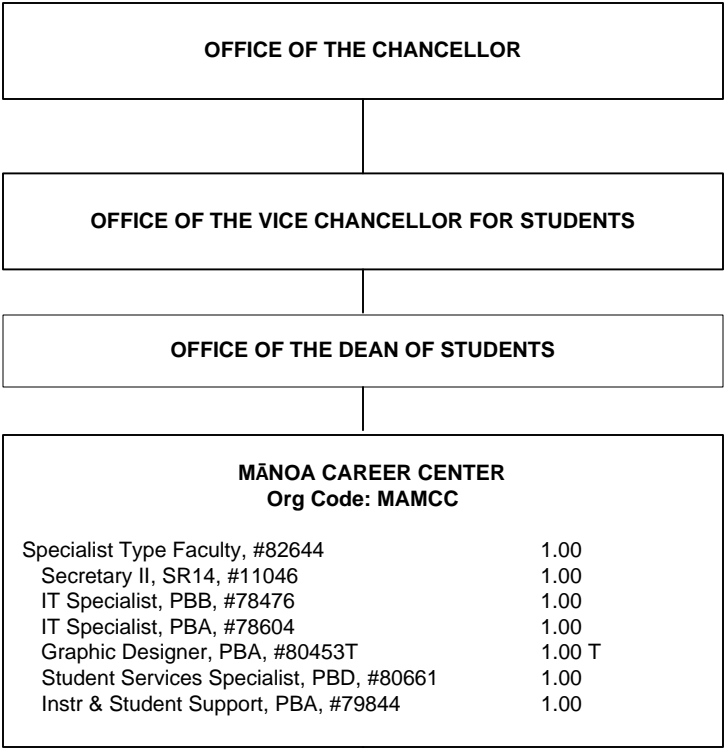
FINANCIAL AID  
SERVICES  
Org Code: MAFAEM  
(Chart IV-H)

INFORMATION AND  
COMPUTER SERVICES  
Org Code: MAITEM  
(Chart IV-H)

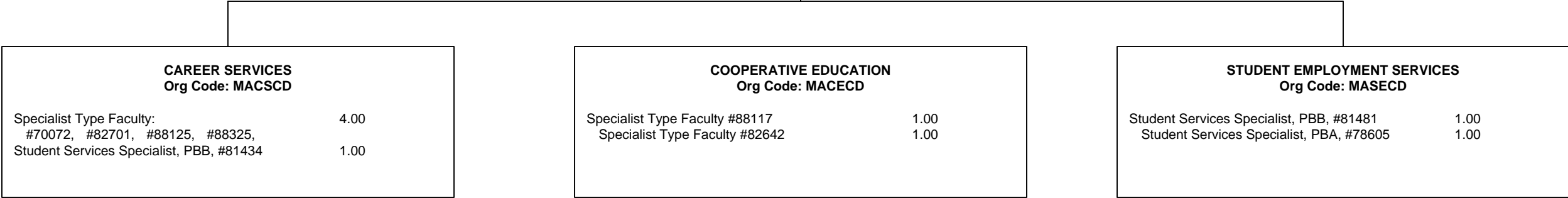
1/ Associate Vice Chancellor, #89309 in OVCS also serves as Dean of Students.  
2/ Assistant Vice Chancellor, #89133 in OVCS also serves as Enrollment Management and Director.  
3/ Assistant Vice Chancellor, #89479 in OVCS also serves as Director of SEED.

CHART TOTAL:	PERM	TEMP
General Funds:	18.00	--

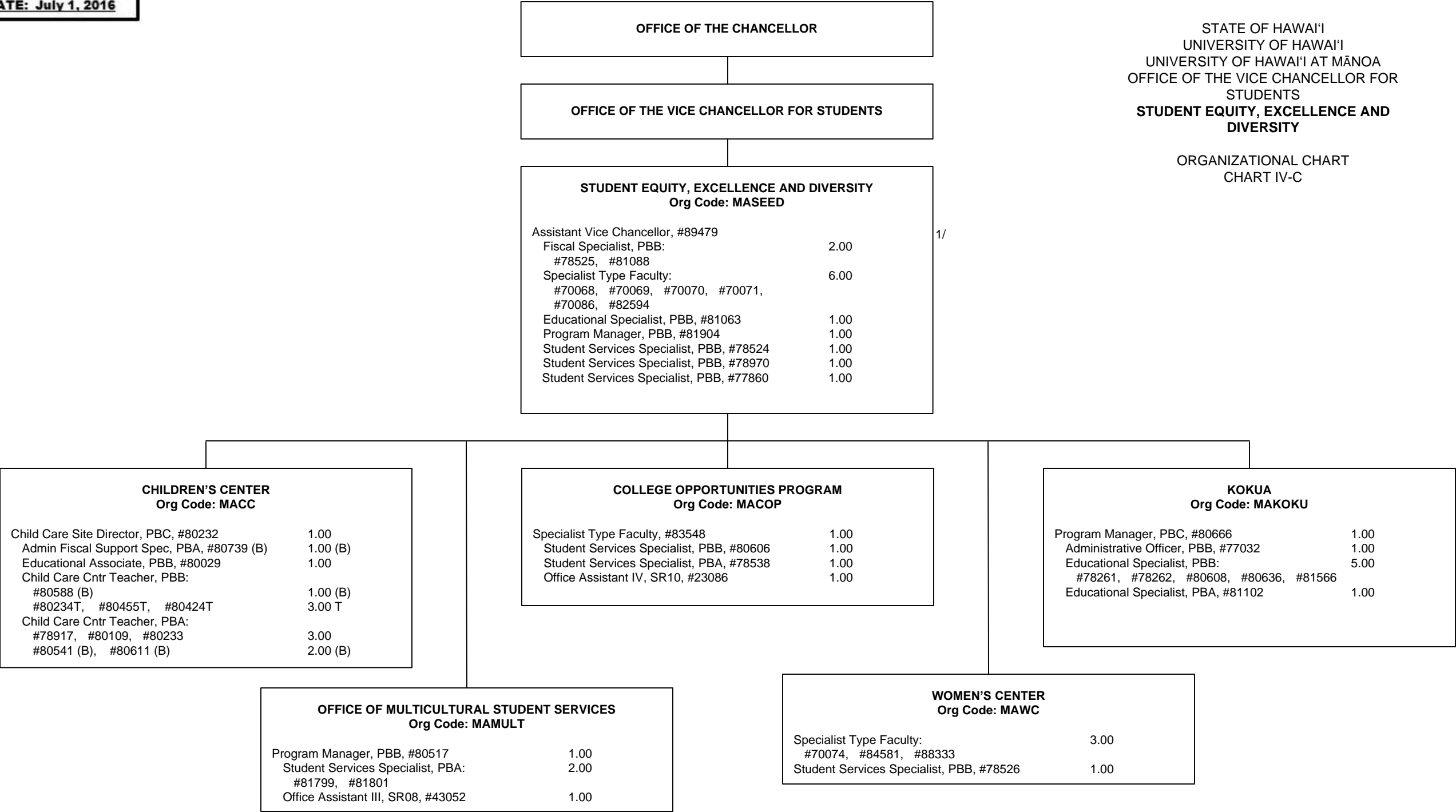




STATE OF HAWAI'I  
UNIVERSITY OF HAWAI'I  
UNIVERSITY OF HAWAI'I AT MĀNOA  
OFFICE OF THE VICE CHANCELLOR FOR STUDENTS  
OFFICE OF THE DEAN OF STUDENTS  
**MĀNOA CAREER CENTER**  
  
ORGANIZATIONAL CHART  
CHART IV-B



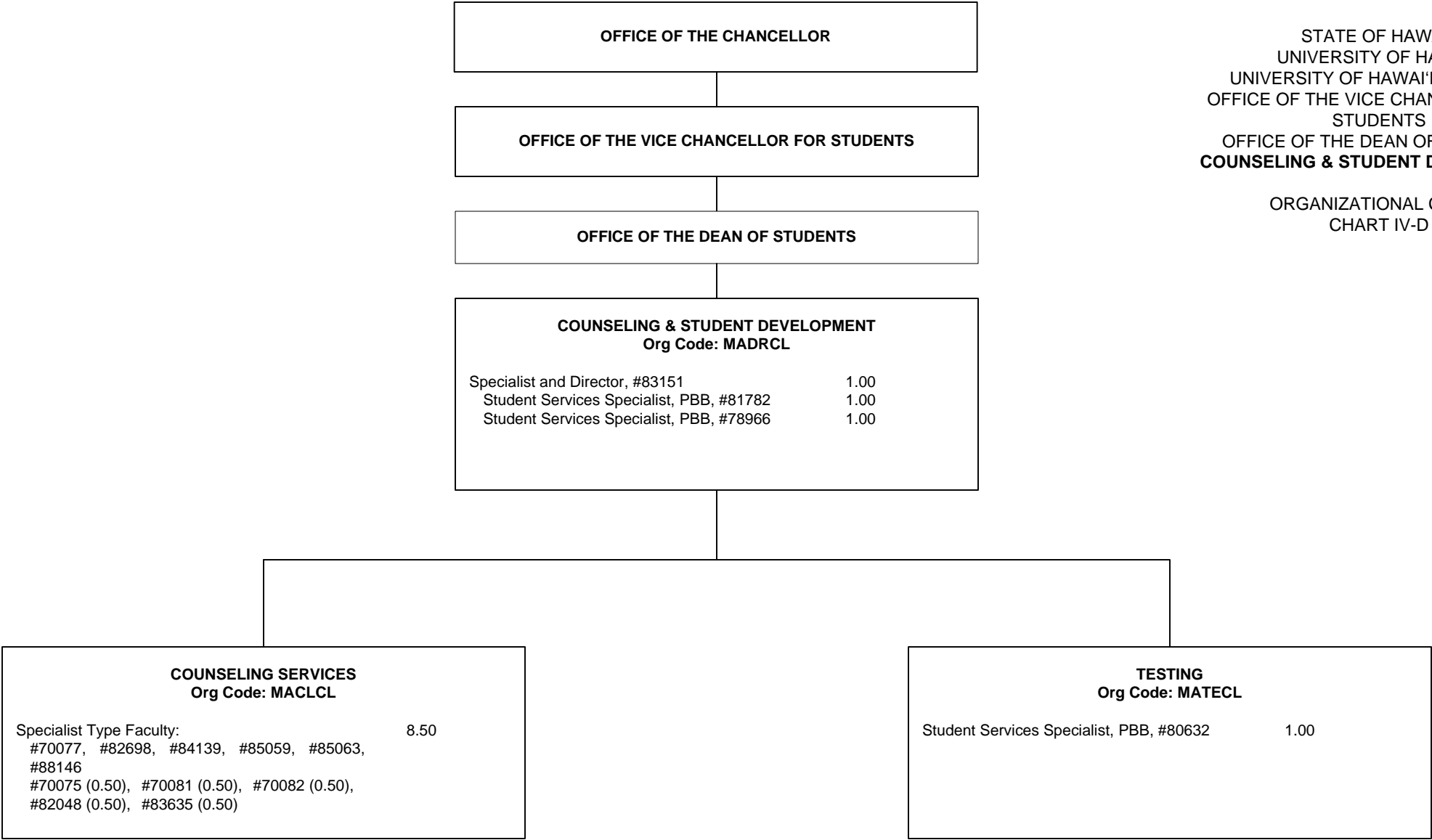
1/ Student Services Spec, #80661 in Mānoa Career Center pending reclassification.



1/ Assistant Vice Chancellor, #89479 in Student, Equity, Excellence and Diversity position count reflected on Chart IV

Abolished position #70073 (1.00 FTE)

CHART TOTAL:	PERM	TEMP
General Funds:	39.00	3.00
Special Funds (B):	4.00	- -



STATE OF HAWAI'I  
UNIVERSITY OF HAWAI'I  
UNIVERSITY OF HAWAI'I AT MĀNOA  
OFFICE OF THE VICE CHANCELLOR FOR STUDENTS  
OFFICE OF THE DEAN OF STUDENTS  
**COUNSELING & STUDENT DEVELOPMENT**

ORGANIZATIONAL CHART  
CHART IV-D

OFFICE OF THE CHANCELLOR

OFFICE OF THE VICE CHANCELLOR FOR STUDENTS

OFFICE OF THE DEAN OF STUDENTS

UNIVERSITY HEALTH SERVICES  
Org Code: MADRHW  
  
Specialist and Director, #823411.00

ADMINISTRATIVE SUPPORT  
Org Code: MAASHW  
  
Specialist Type Faculty, #835391.00  
Secretary II, SR14, #153531.00  
Fiscal Specialist, PBB, #796461.00  
Admin & Fiscal Support Sp, PBA, #797151.00  
Office Assistant IV, SR10, #25410 (W)1.00 (W)  
Cashier I, SR10, #112430 (W)1.00 (W)

HEALTH EDUCATION AND PROMOTION  
Org Code: MAHPHW  
  
Specialist Type Faculty:2.00  
#70079, #88317

MEDICAL STAFF  
Org Code: MAMSHW  
  
Advanced Practice Registered Nurse II, SR28, #41706 (W)1.00 (W)  
Specialist Type Faculty:2.00 (W)  
#83261 (0.50) (W), #83397 (0.50) (W),  
#84576 (0.50) (W), #84576A (0.50) (W)

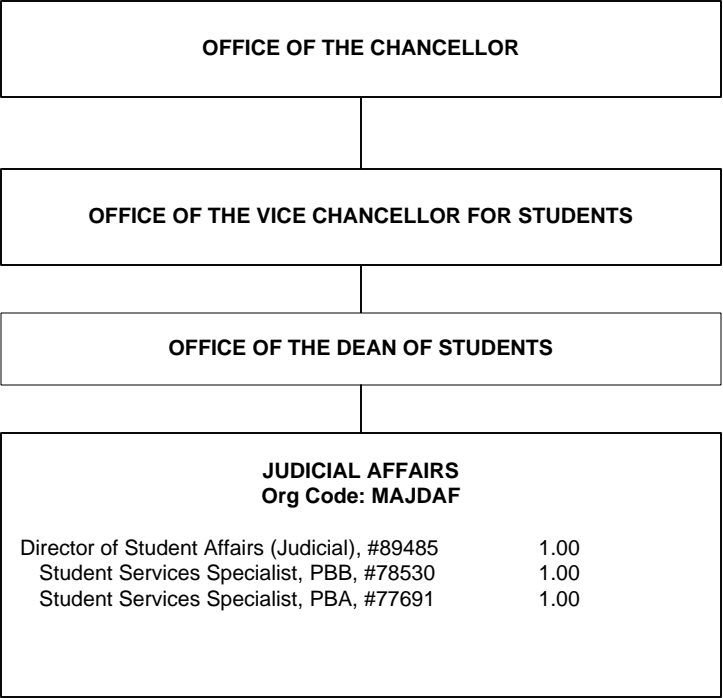
NURSING STAFF  
Org Code: MANSHW  
  
Registered Nurse IV, SR22, #10312 (W)1.00 (W)  
Registered Nurse III, SR20:4.00 (W)  
#13615 (W), #13616 (W), #18091 (W),  
#22672 (W)

LABORATORY  
Org Code: MALBHW  
  
Medical Technologist, PBA, #806711.00

PHARMACY  
Org Code: MAPHHW  
  
Pharmacist, PBC:  
#78521 (0.50)0.50  
#81877 (0.25) (W)0.25 (W)

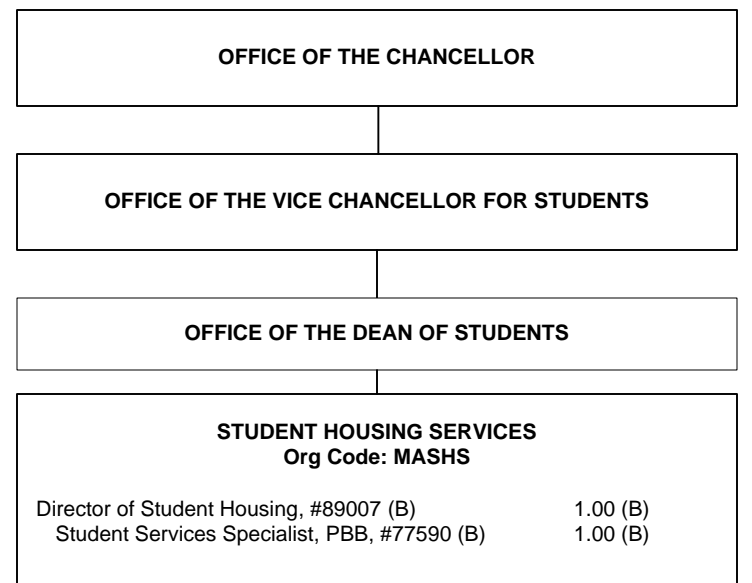
STATE OF HAWAI'I  
UNIVERSITY OF HAWAI'I  
UNIVERSITY OF HAWAI'I AT MĀNOA  
OFFICE OF THE VICE CHANCELLOR FOR STUDENTS  
OFFICE OF THE DEAN OF STUDENTS  
UNIVERSITY HEALTH SERVICES  
  
ORGANIZATIONAL CHART  
CHART IV-E

CHART TOTAL:	PERM	TEMP
General Funds:	8.50	--
Revolving Funds (W):	10.25	--



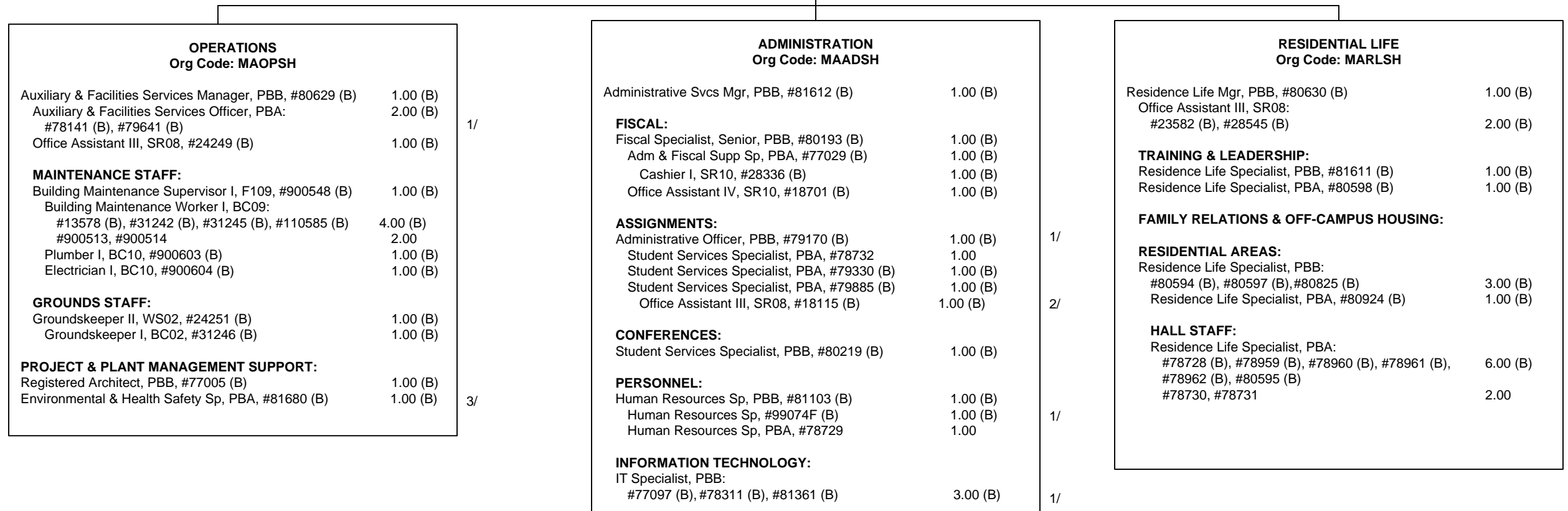
STATE OF HAWAI'I  
UNIVERSITY OF HAWAI'I  
UNIVERSITY OF HAWAI'I AT MĀNOA  
OFFICE OF THE VICE CHANCELLOR FOR  
STUDENTS  
OFFICE OF THE DEAN OF STUDENTS  
JUDICIAL AFFAIRS

ORGANIZATIONAL CHART  
CHART IV-F



STATE OF HAWAII  
UNIVERSITY OF HAWAII  
UNIVERSITY OF HAWAII AT MĀNOA  
OFFICE OF THE VICE CHANCELLOR FOR  
STUDENTS  
OFFICE OF THE DEAN OF STUDENTS  
**STUDENT HOUSING SERVICES**

ORGANIZATIONAL CHART  
CHART IV-G



1/ Pending establishment:

Student Svcs Spec #77590 in Student Housing Svcs; Aux & Fac Svcs Ofcr #79641 in Operations; and Admin Ofcr, #79170, HR Spec, #99074F, and IT Spec, #77097 in Administration.

2/ Ofc Asst III, #18115 abolished, to be redescribed/re-established.

3/ Environ & Health Safety Spec, #81680 supervised by Environmental Health & Safety.

New reallocated positions to be established (99075F-99093F) 19.00 FTE (B)

**CHART TOTAL:**

General Funds:

Special Funds (B):

**PERM**

6.00

66.00

TEMP

- -

— —



OFFICE OF THE CHANCELLOR

OFFICE OF THE VICE CHANCELLOR FOR STUDENTS

ENROLLMENT MANAGEMENT  
Org Code: MAEM

Assistant Vice Chancellor, #89133  
Admin & Fiscal Support Sp, PBA, #77488 1.00  
Administrative Officer, PBB, #78674 1.00  
Account Clerk III, SR-11  
Admissions Specialist, PBB, #80096 1.00

2/

1/

INFORMATION AND COMPUTER SERVICES  
Org Code: MAITEM

IT Manager, PBB, #80018 1.00  
IT Specialist, PBB: 3.00  
#78228, #80017, #81134

OFFICE OF ADMISSIONS  
Org Code: MAOAEM

Admissions Manager, PBC, #81154 1.00  
Secretary II, SR14, #14866 1.00  
Clerk Supervisor III, SR14, #00748 1.00  
Office Assistant IV, SR10: 6.00  
#12842, #13495, #13496, #18009, #26538,  
#900015  
Office Assistant III, SR8, #900016 1.00  
Admissions Specialist, PBB: 5.00  
#78658, #80626, #81071, #81414, #81734  
Admissions Specialist, PBB, #80625 1.00  
Office Assistant IV, SR10, #11496 1.00  
Admissions Specialist, PBB, #80530 1.00  
Admissions Specialist, PBB, #78660 1.00  
Admissions Specialist, PBA: 6.00  
#77518, #77519, #77520, #77521, #77885,  
#78659  
Admissions Specialist, PBB, #78406 1.00  
Admissions Specialist, PBA, #79845 1.00  
Office Assistant IV, SR10: 4.00  
#15501, #40004, #40005, #900159  
  
Admissions Manager, PBC, #80463 1.00  
Admissions Specialist, PBB: 6.00  
#78215, #78702, #78703, #78716, #78825  
#78826,  
Admissions Specialist, PBA, #78105 1.00  
Admin & Fiscal Support Sp, PBA, #78827 1.00

OFFICE OF THE REGISTRAR  
Org Code: MARGEM

Registrar, PBC, #81614 1.00  
  
Registrar, Assistant, PBB, #80658 1.00  
Registrar, Assistant, PBA, #79064 (W) 1.00 (W)  
Student Services Specialist, PBA: 2.00  
#78405, #78657  
  
Registrar, Assistant, PBA, #78828 1.00  
Office Assistant IV, SR10: 5.00  
#00750, #14864, #15502, #21430, #40006 1.00 (W)  
#14865(W)  
Office Assistant III, SR8: 2.00 (W)  
#13494 (W), #26539 (W)  
  
Scheduler, SR20, #05837 1.00  
Office Assistant, IV, SR10, #13959 1.00

FINANCIAL AID SERVICES  
Org Code: MAFAEM

Financial Aid Manager, PBC, #77250 1.00  
  
Financial Aid Specialist, PBB, #81913 1.00  
  
Financial Aid Specialist, PBB: 8.00  
#77044, #78226, #78227, #80717, #80922  
#81151, #81607, #81609  
  
Financial Aid Specialist, PBA: 9.00  
#78224, #78225, #78245, #78760, #78761,  
#78951, #80052, #81606, #81608

CHART TOTAL: PERM TEMP  
General Funds: 78.00 --  
Revolving Funds (W): 4.00 --

1/ Acct Clerk III in Enrollment Management is a new position approved in 2/17/05 reorg; position number to be determined.  
2/ Assistant Vice Chancellor, #89133 position count reflected on Chart IV.