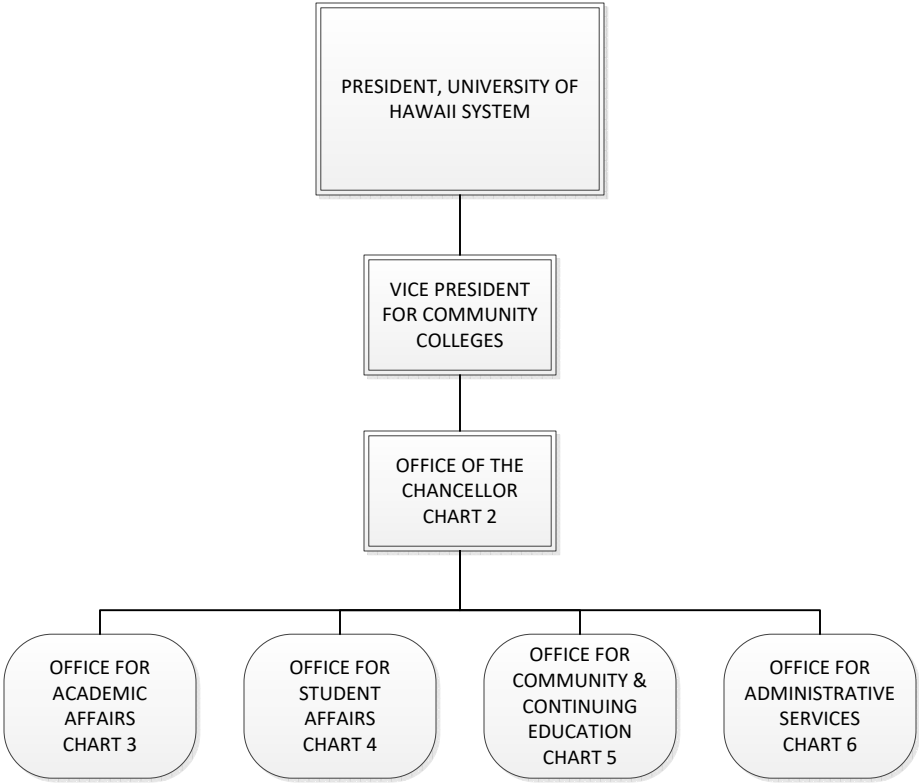
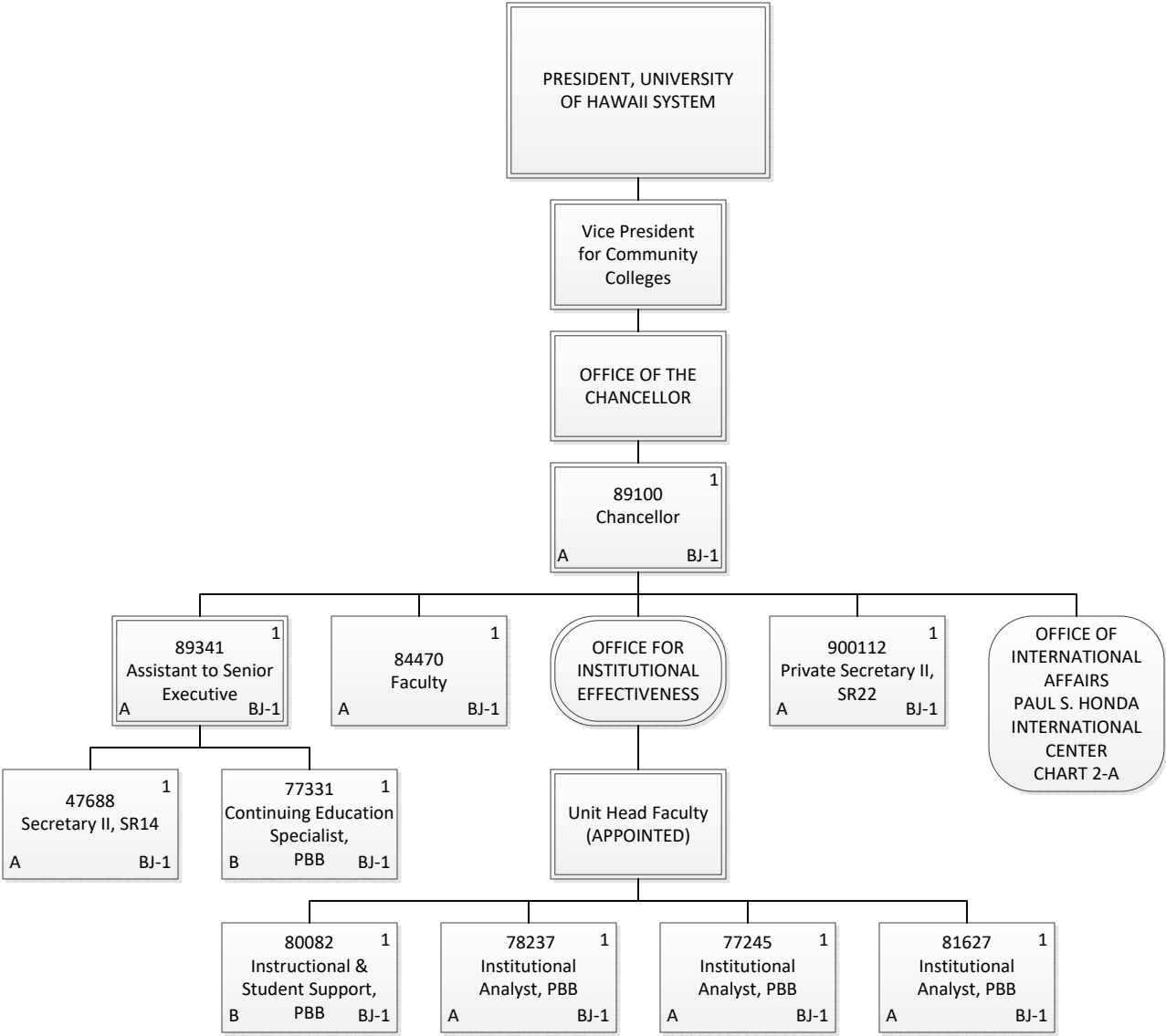


CHART UPDATED
DATE: July 1, 2017



Permanent	411.00
General Funds	394.00
Special Funds	17.00
Temporary	29.00
General Funds	29.00
Grand Total	440.00



Permanent	10.00
General Funds	8.00
Special Funds	2.00
Grand Total	10.00

OFFICE OF THE CHANCELLOR

OFFICE OF
INTERNATIONAL
AFFAIRS
PAUL S. HONDA
INTERNATIONAL
CENTER

Unit Head Faculty
(APPOINTED)

827761
Faculty
B BJ-1

837451
Faculty
A BJ-1

814551
Academic Support,
PBA
B BJ-1

789671
Educational
Specialist, PBB
A BJ-1

87611T1
Faculty
A BT-1

77229T1
Educational
Specialist, PBB
A BT-1

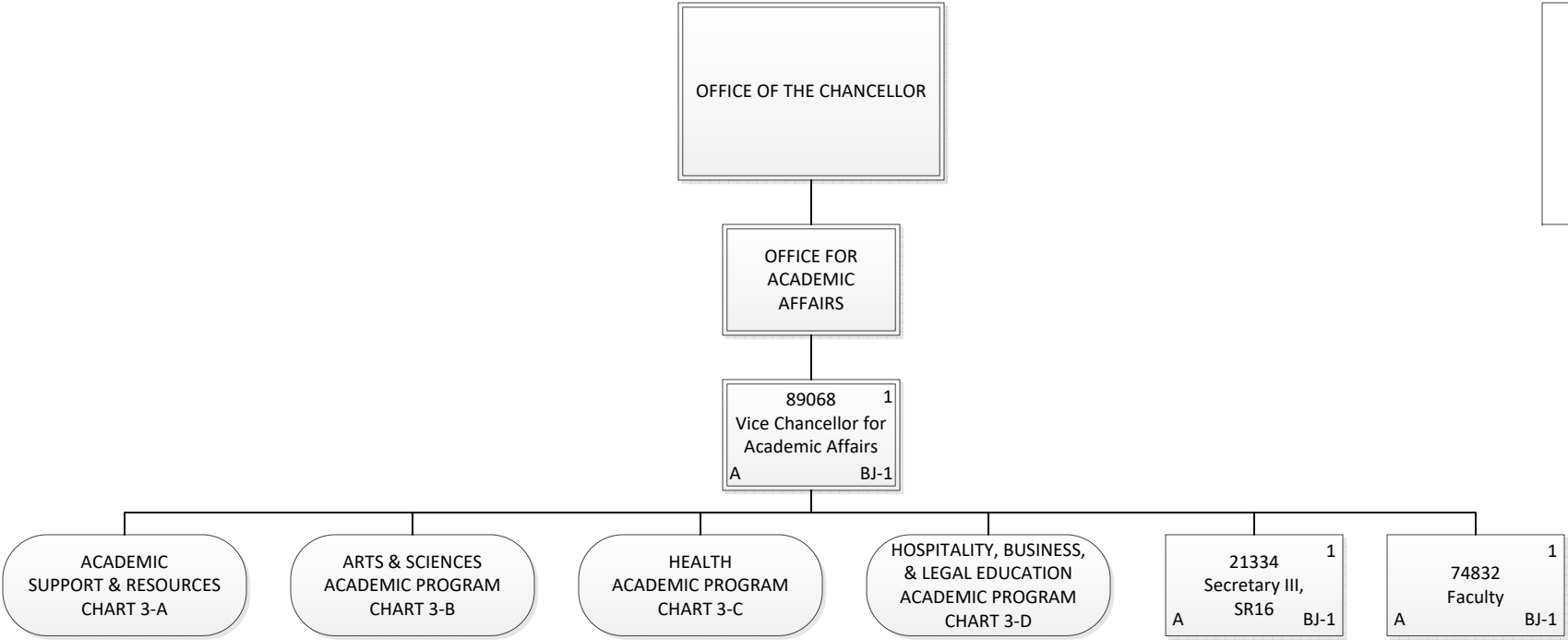
88035T1
Faculty
A BT-1

782481
Educational
Specialist, PBB
A BJ-1

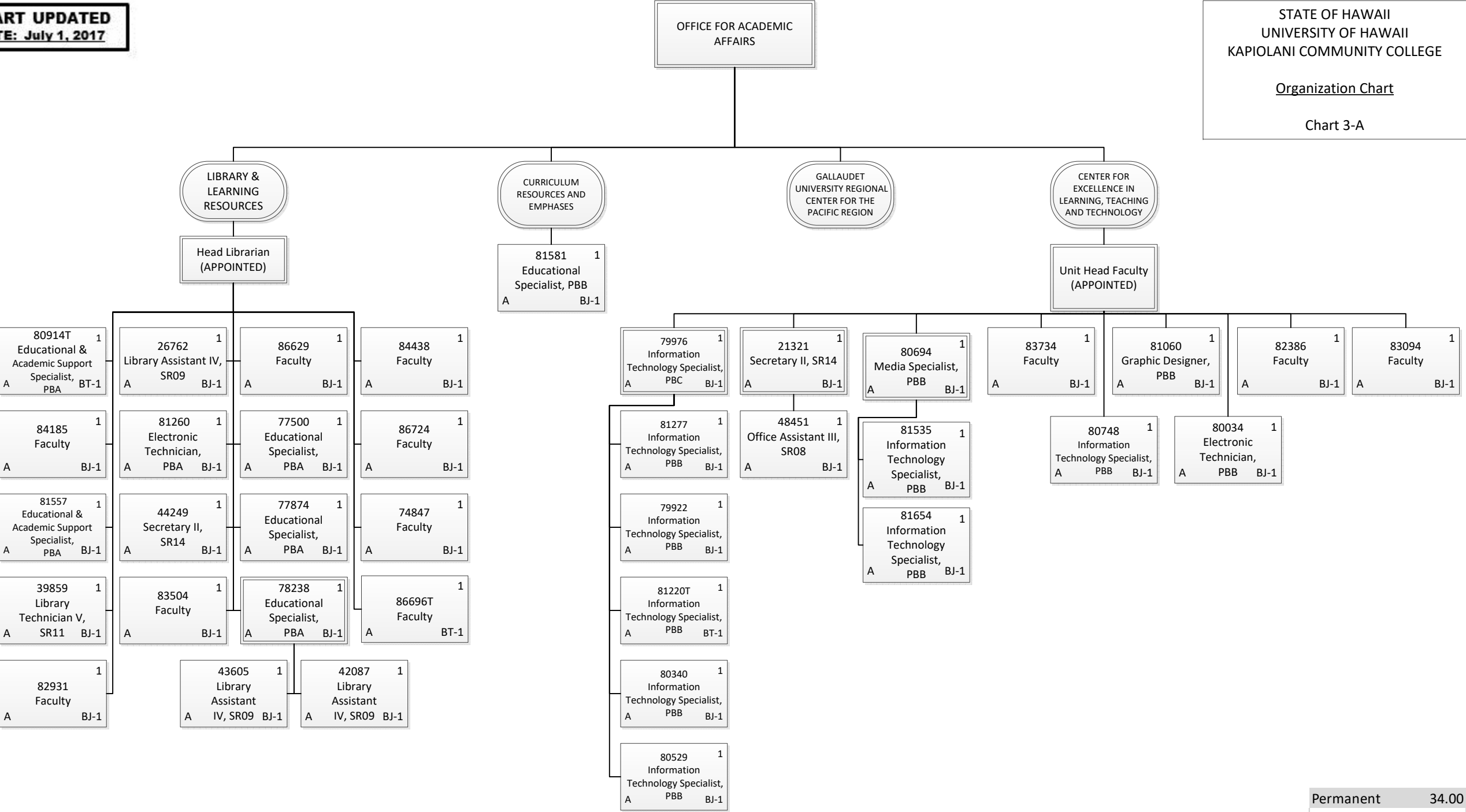
807781
Educational
Specialist,
PBB
B BJ-1

79714T1
Educational
Specialist, PBB
A BT-1

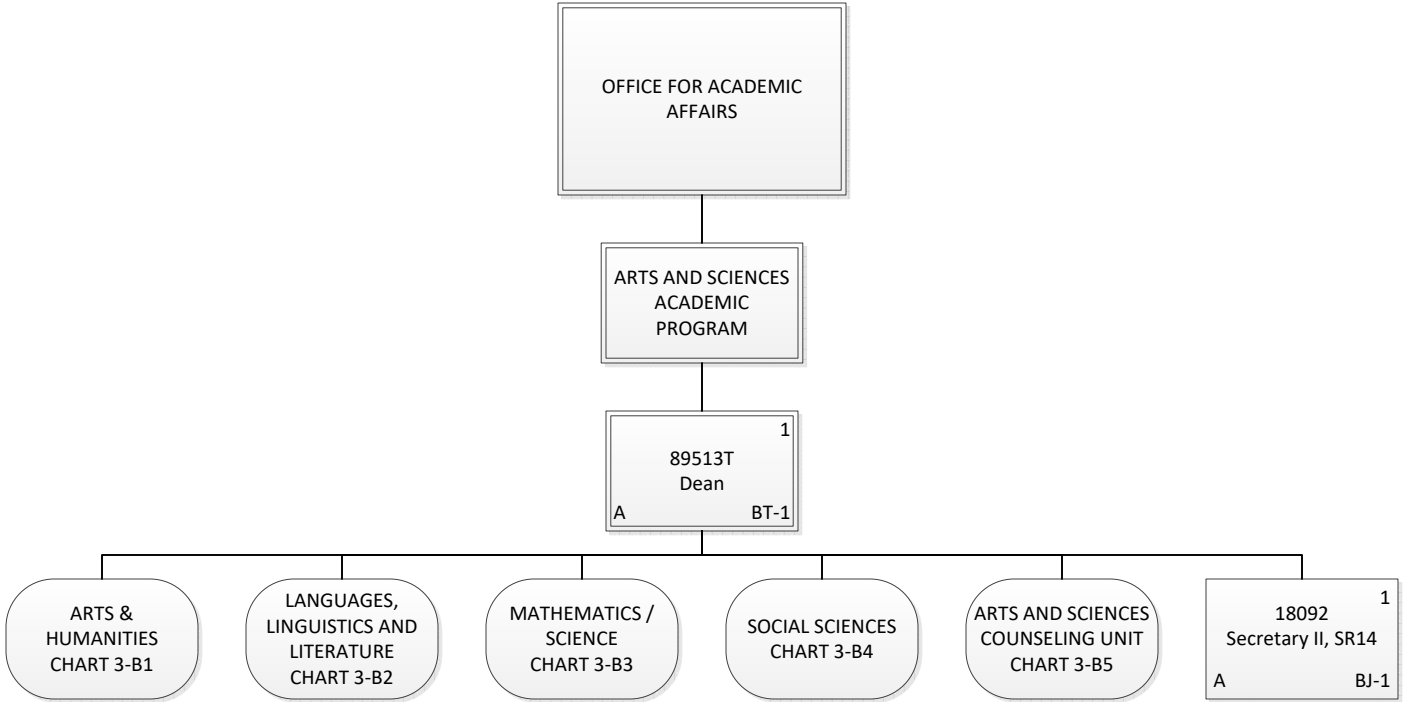
Permanent	6.00
General Funds	3.00
Special Funds	3.00
Temporary	4.00
General Funds	4.00
Grand Total	10.00



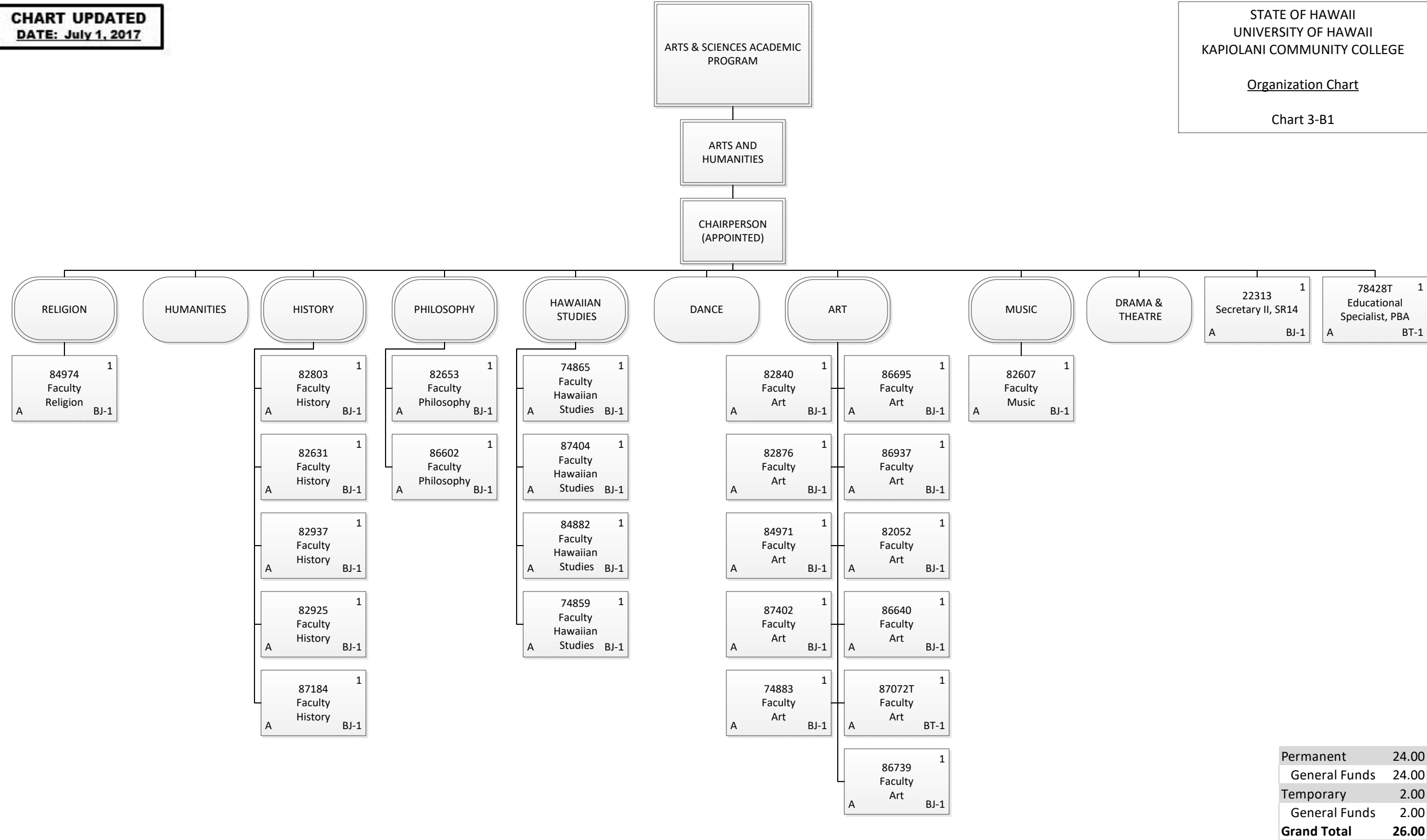
Permanent	3.00
General Funds	3.00
Grand Total	3.00

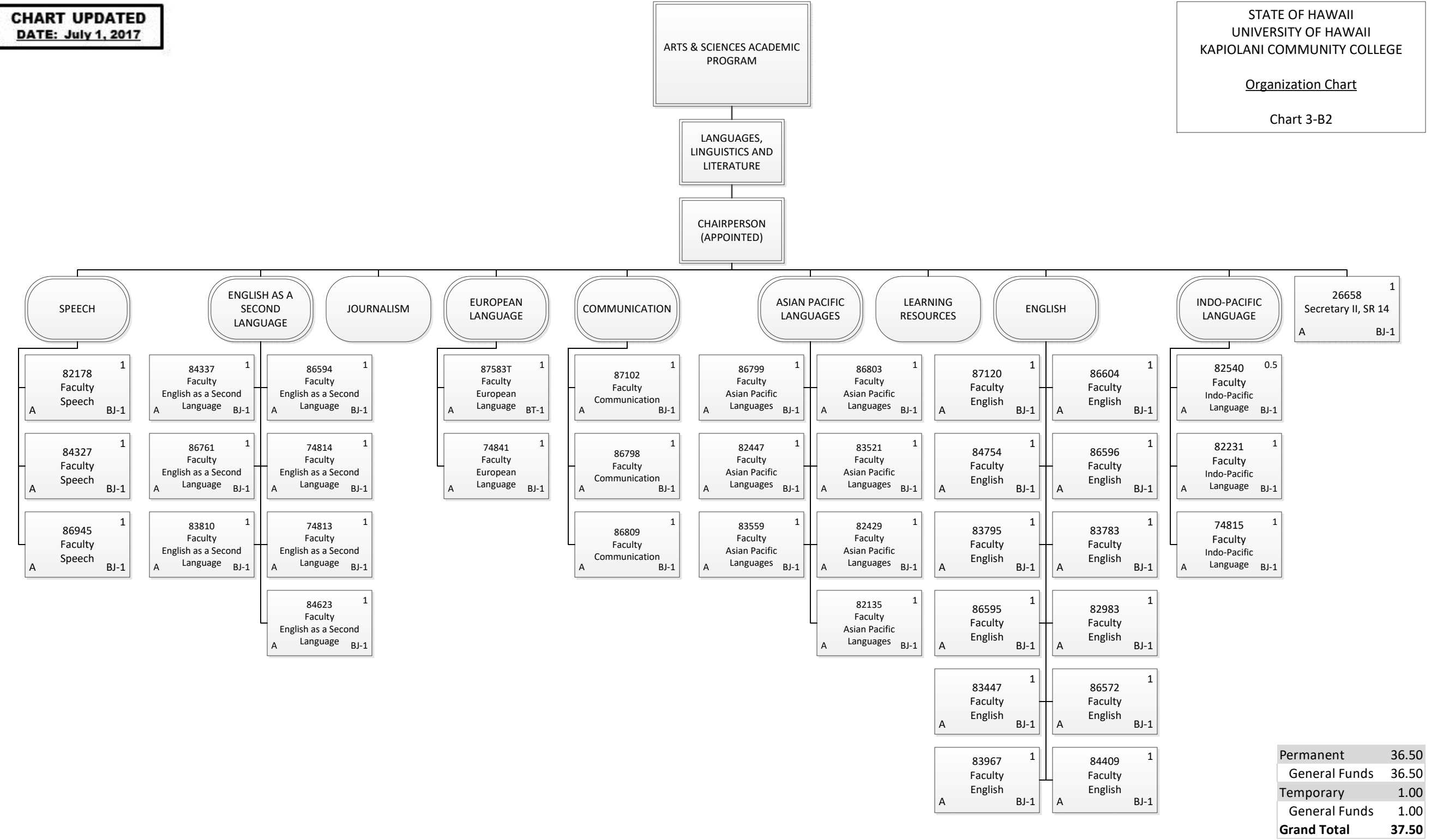


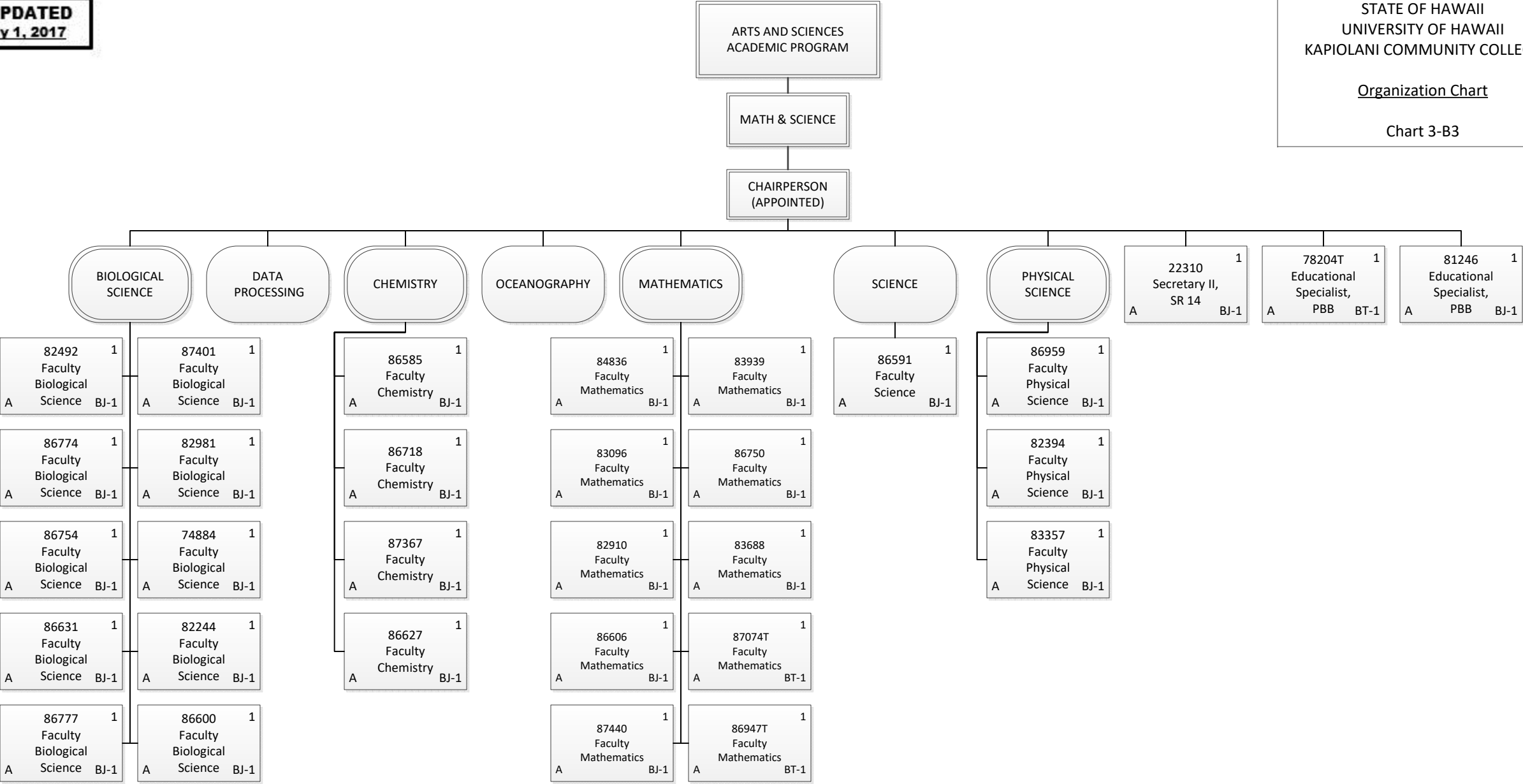
Permanent	34.00
General Funds	34.00
Temporary	3.00
General Funds	3.00
Grand Total	37.00



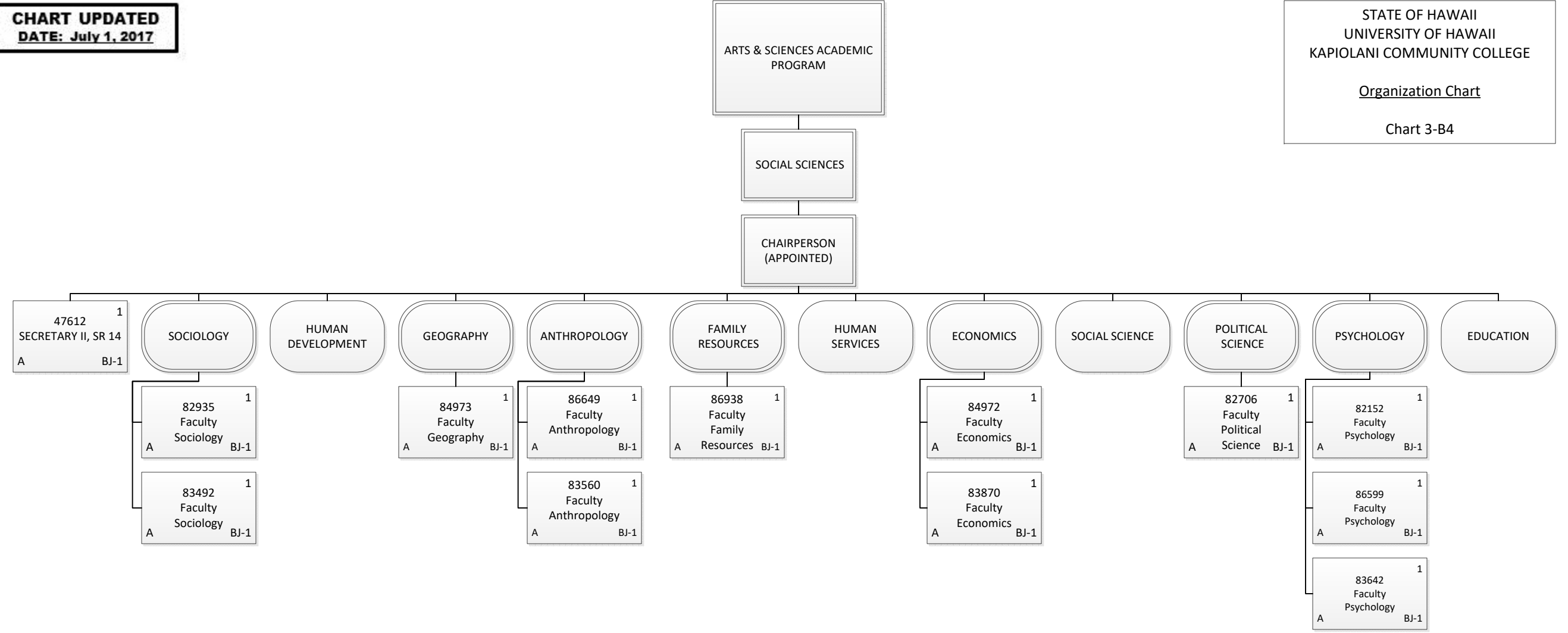
Permanent	1.00
General Funds	1.00
Temporary	1.00
General Funds	1.00
Grand Total	2.00



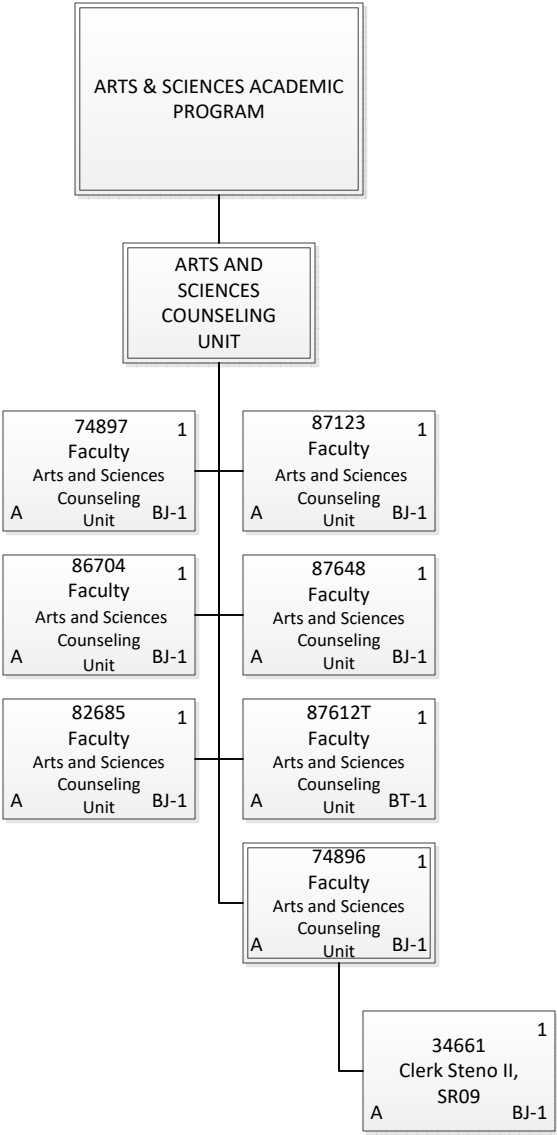




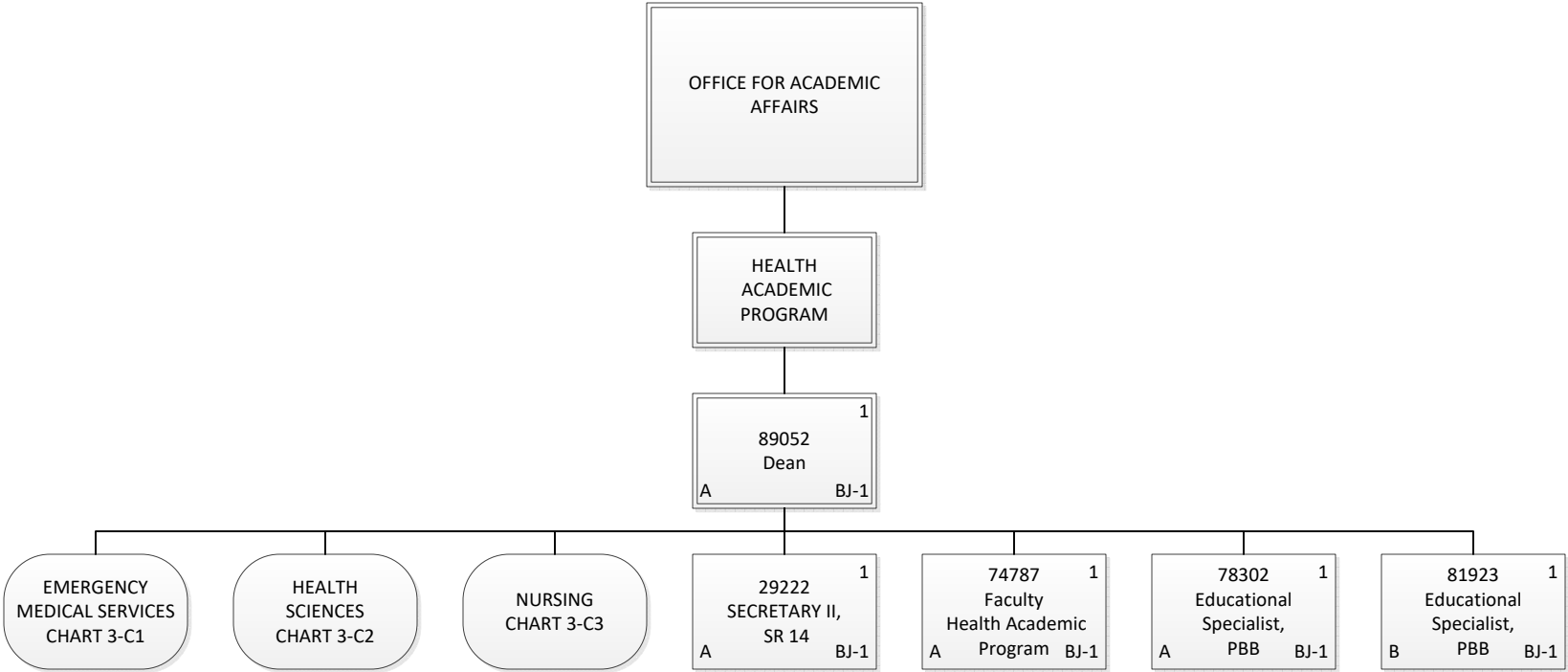
Permanent	28.00
General Funds	28.00
Temporary	3.00
General Funds	3.00
Grand Total	31.00



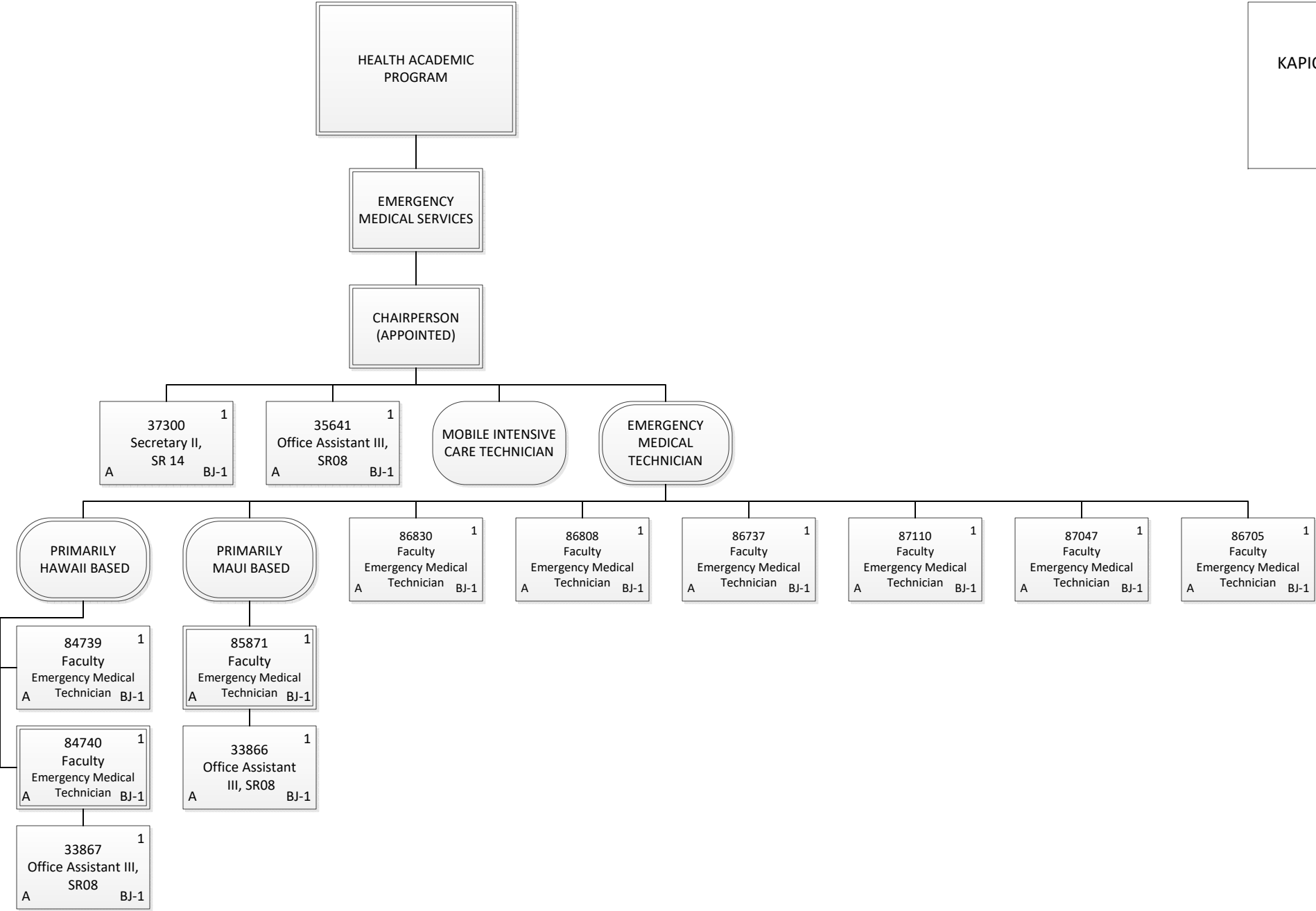
Permanent	13.00
General Funds	13.00
Grand Total	13.00



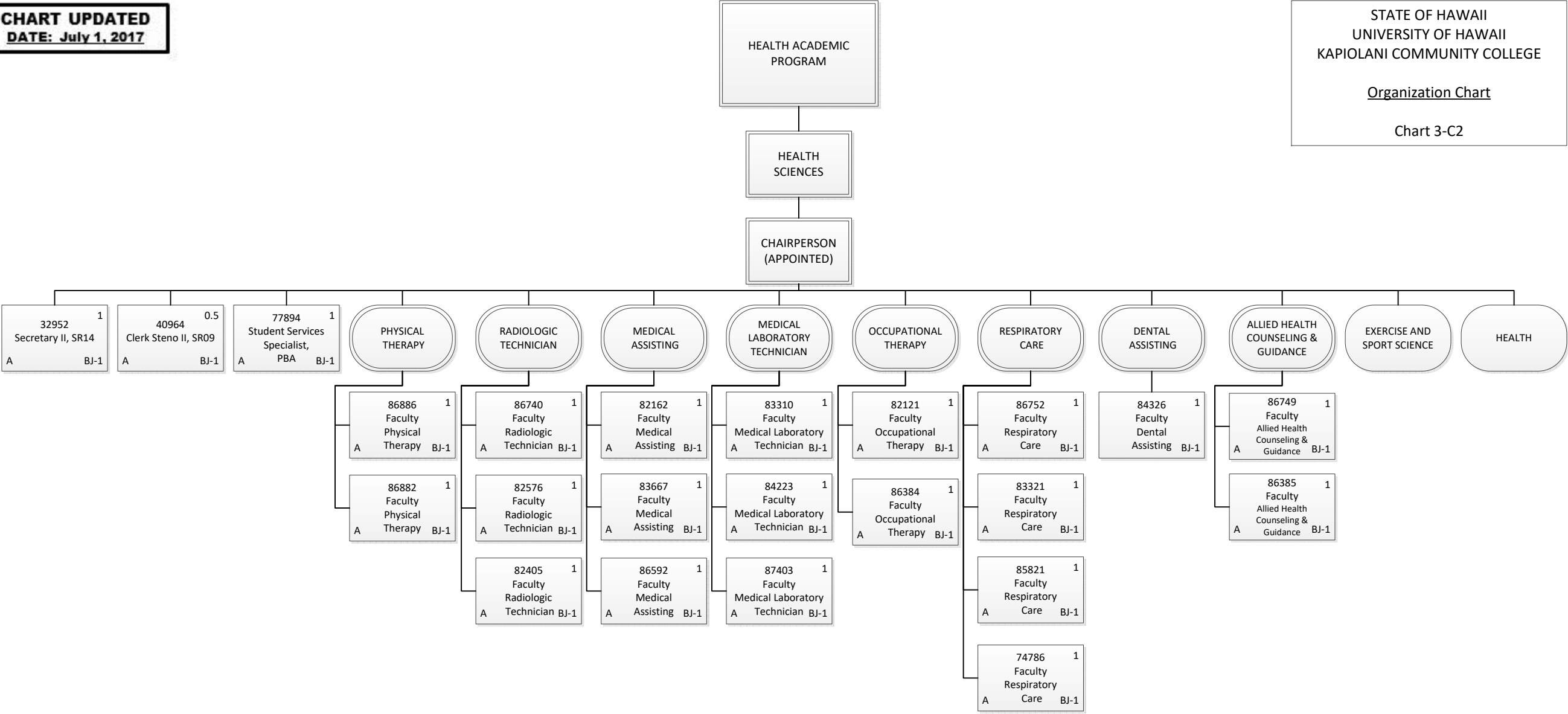
Permanent	7.00
General Funds	7.00
Temporary	1.00
General Funds	1.00
Grand Total	8.00



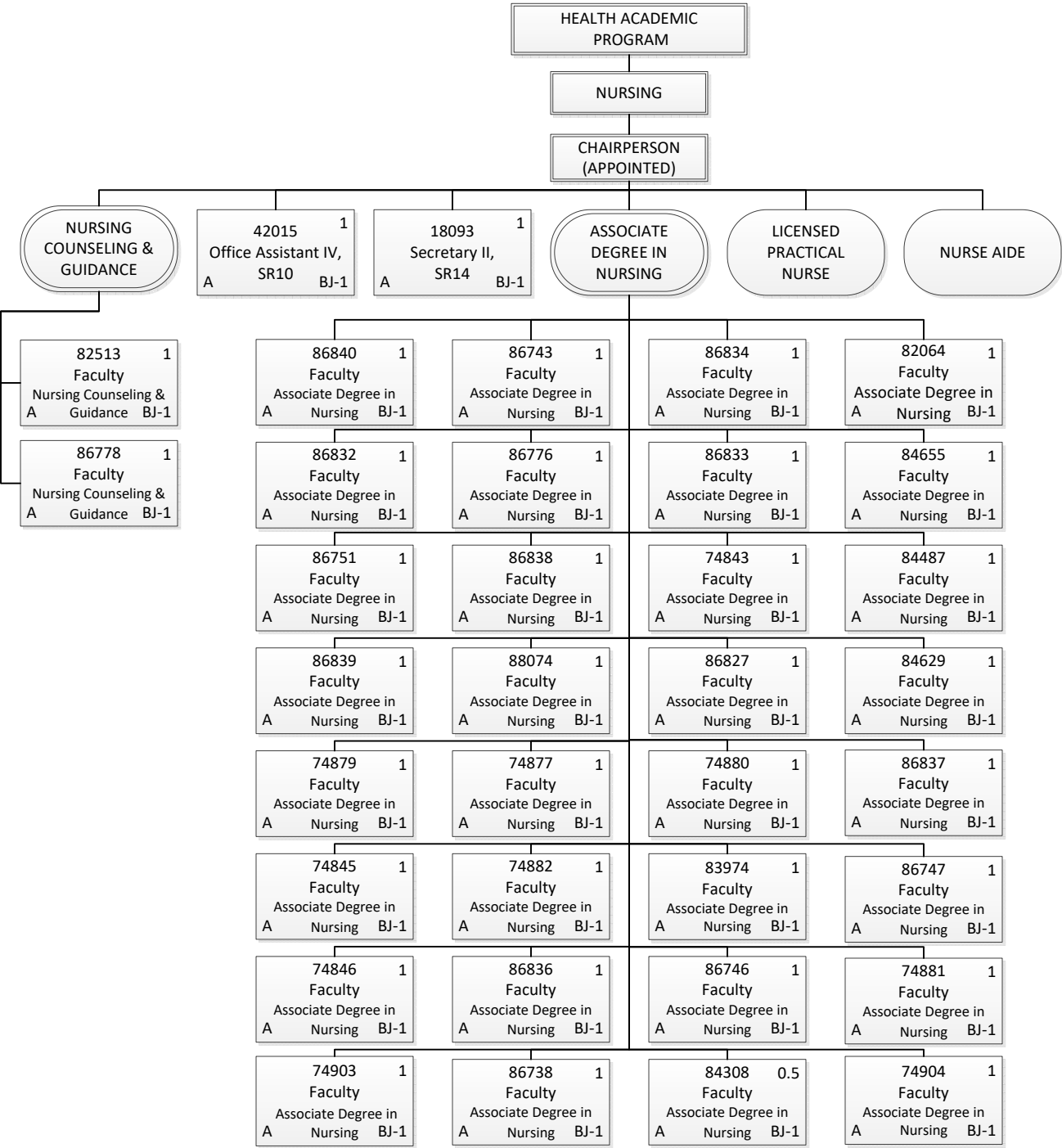
Permanent	5.00
General Funds	4.00
Special Funds	1.00
Grand Total	5.00



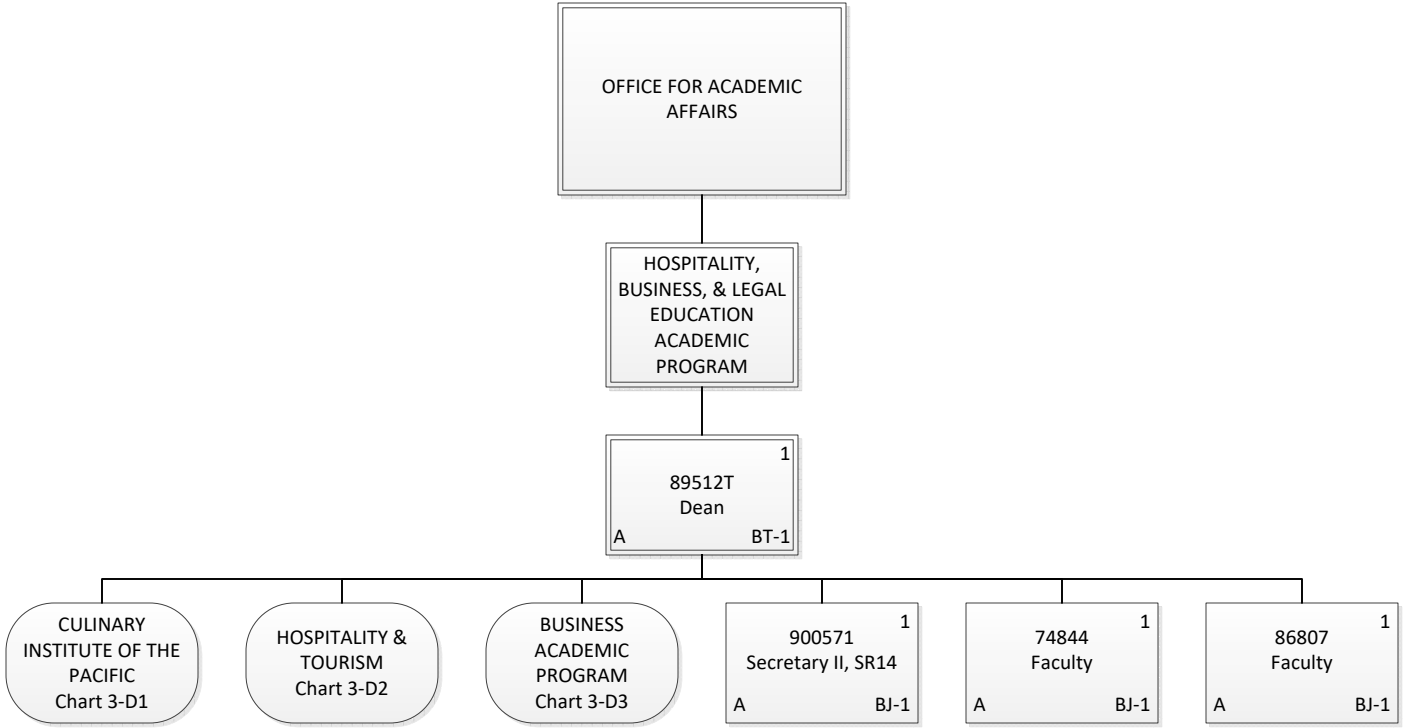
Permanent	13.00
General Funds	13.00
Grand Total	13.00



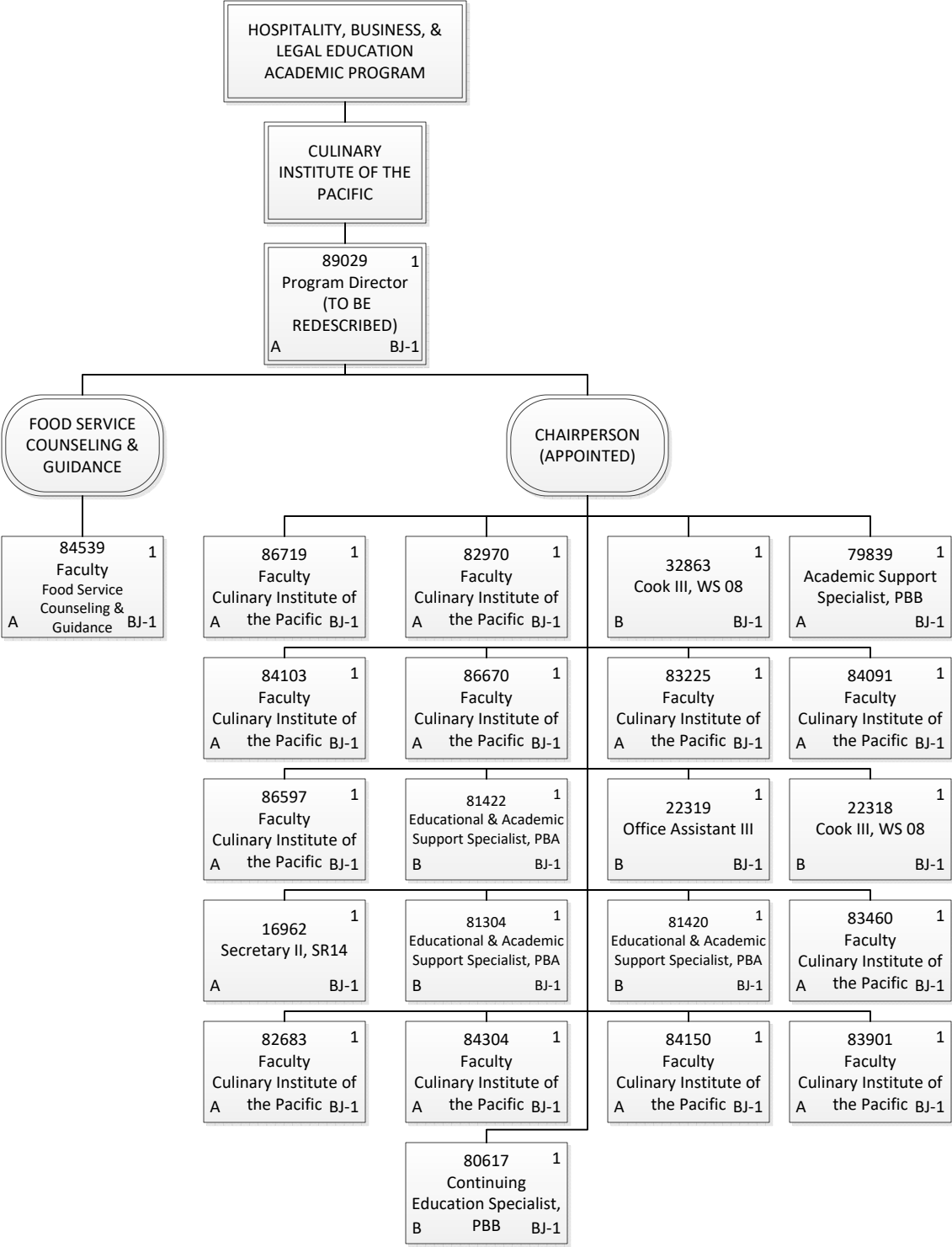
Permanent	22.50
General Funds	22.50
Grand Total	22.50



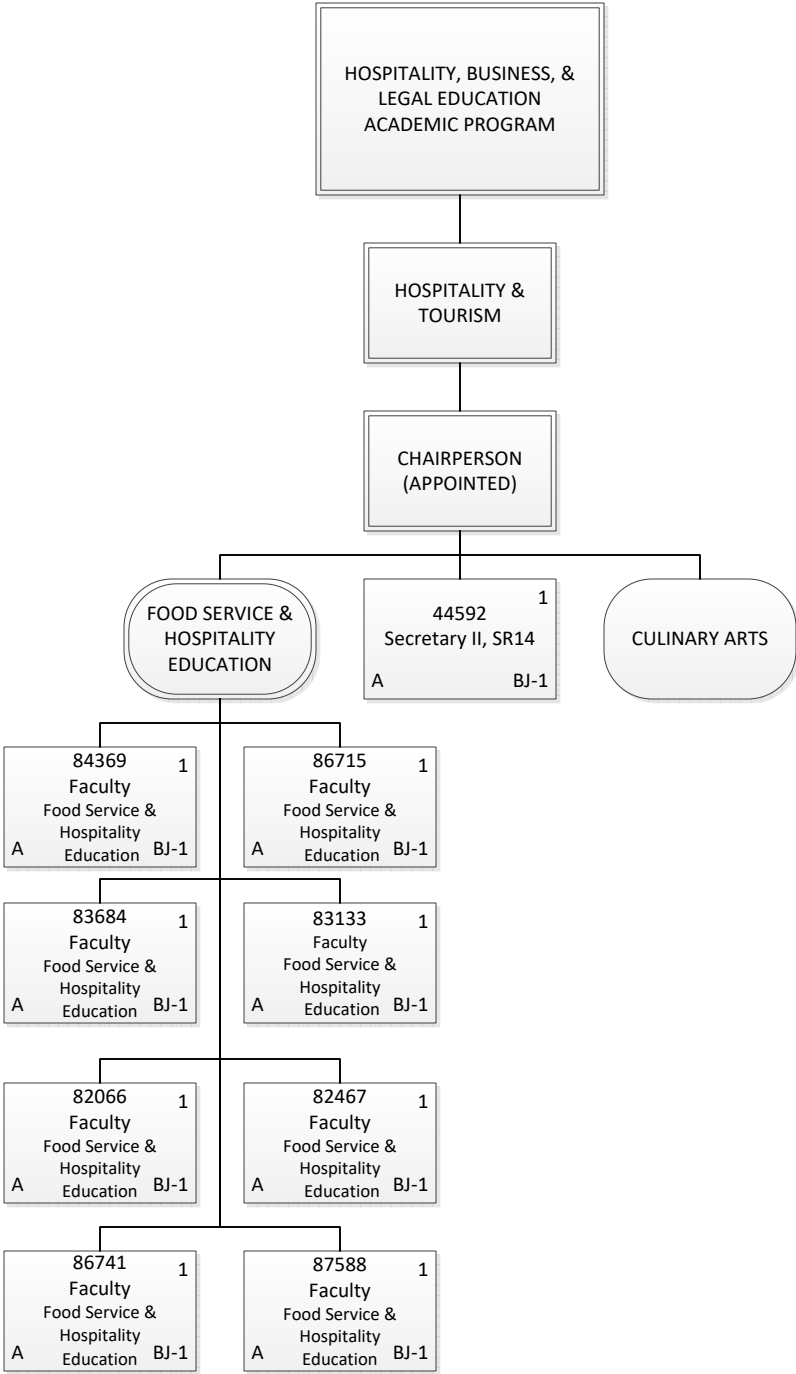
Permanent	35.50
General Funds	35.50
Grand Total	35.50



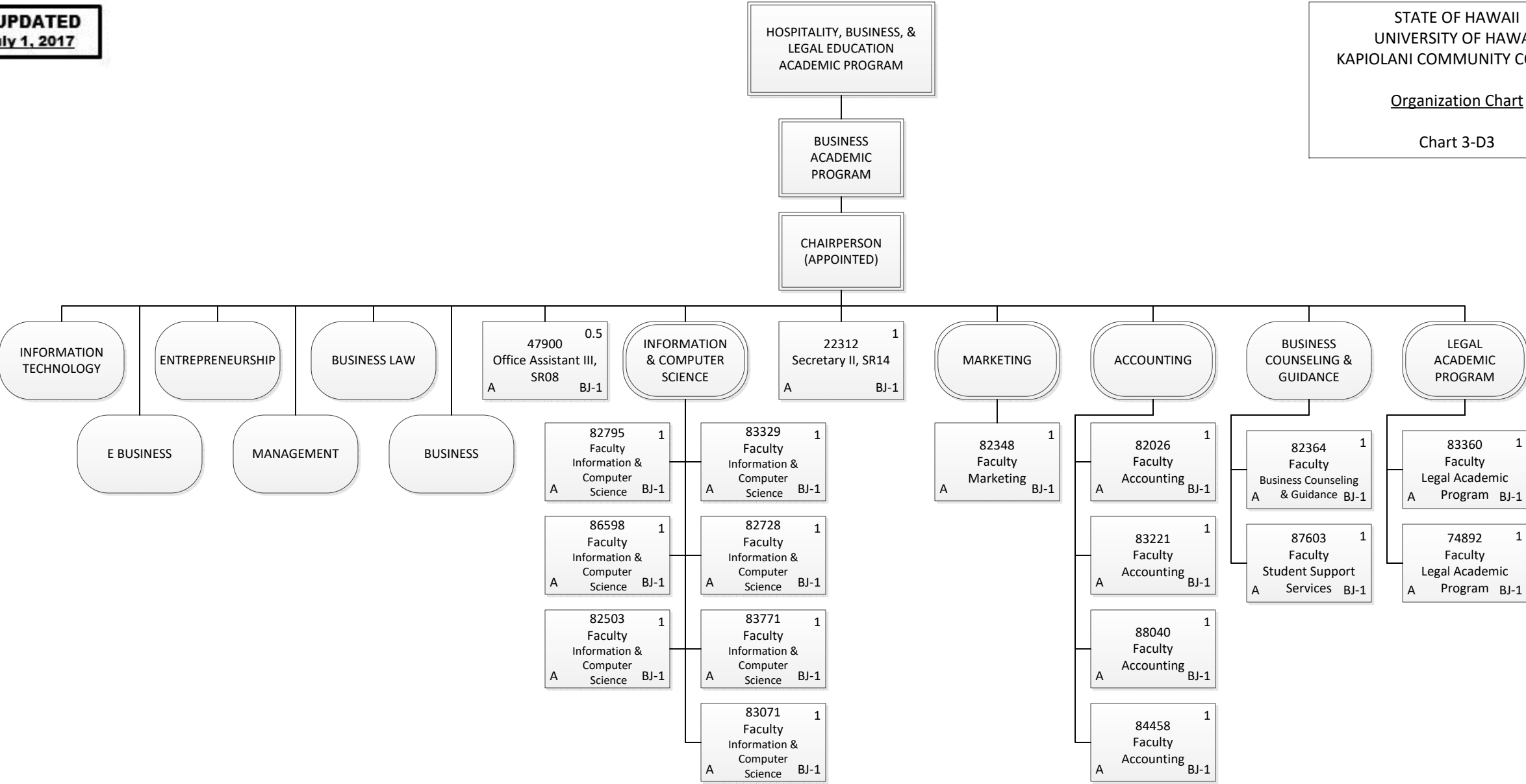
Permanent	3.00
General Funds	3.00
Temporary	1.00
General Funds	1.00
Grand Total	4.00



Permanent	23.00
General Funds	16.00
Special Funds	7.00
Grand Total	23.00

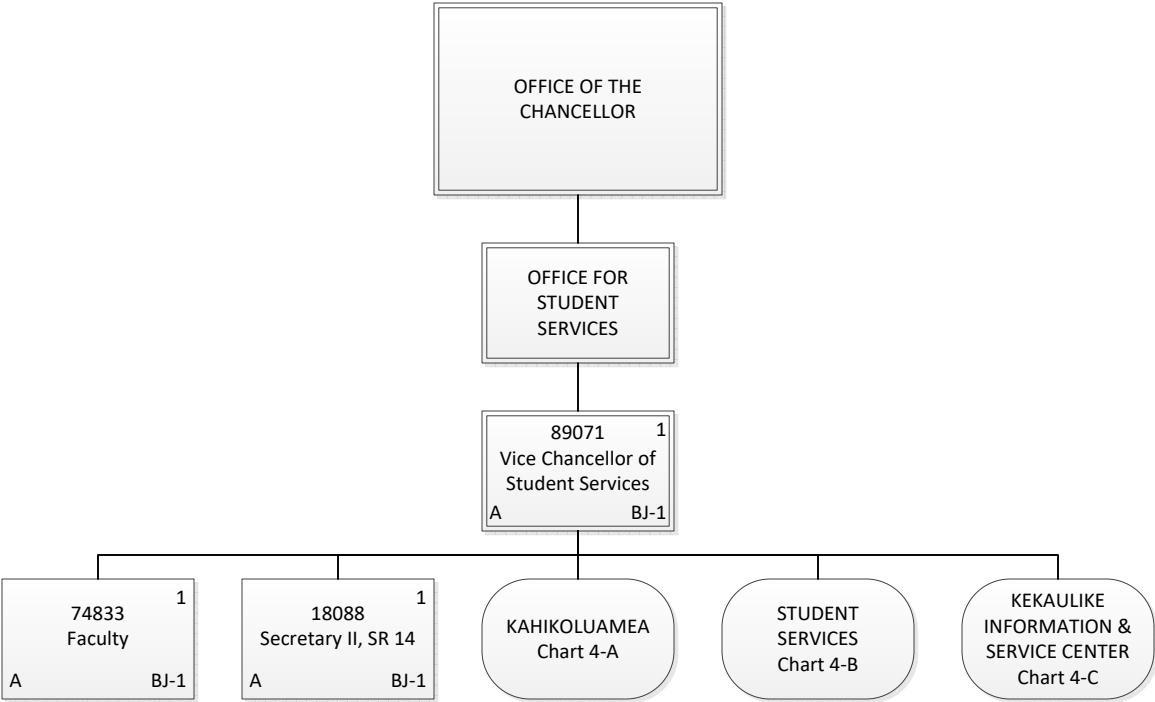


Permanent	9.00
General Funds	9.00
Grand Total	9.00



Permanent	17.50
General Funds	17.50
Grand Total	17.50

CHART UPDATED
DATE: July 1, 2017

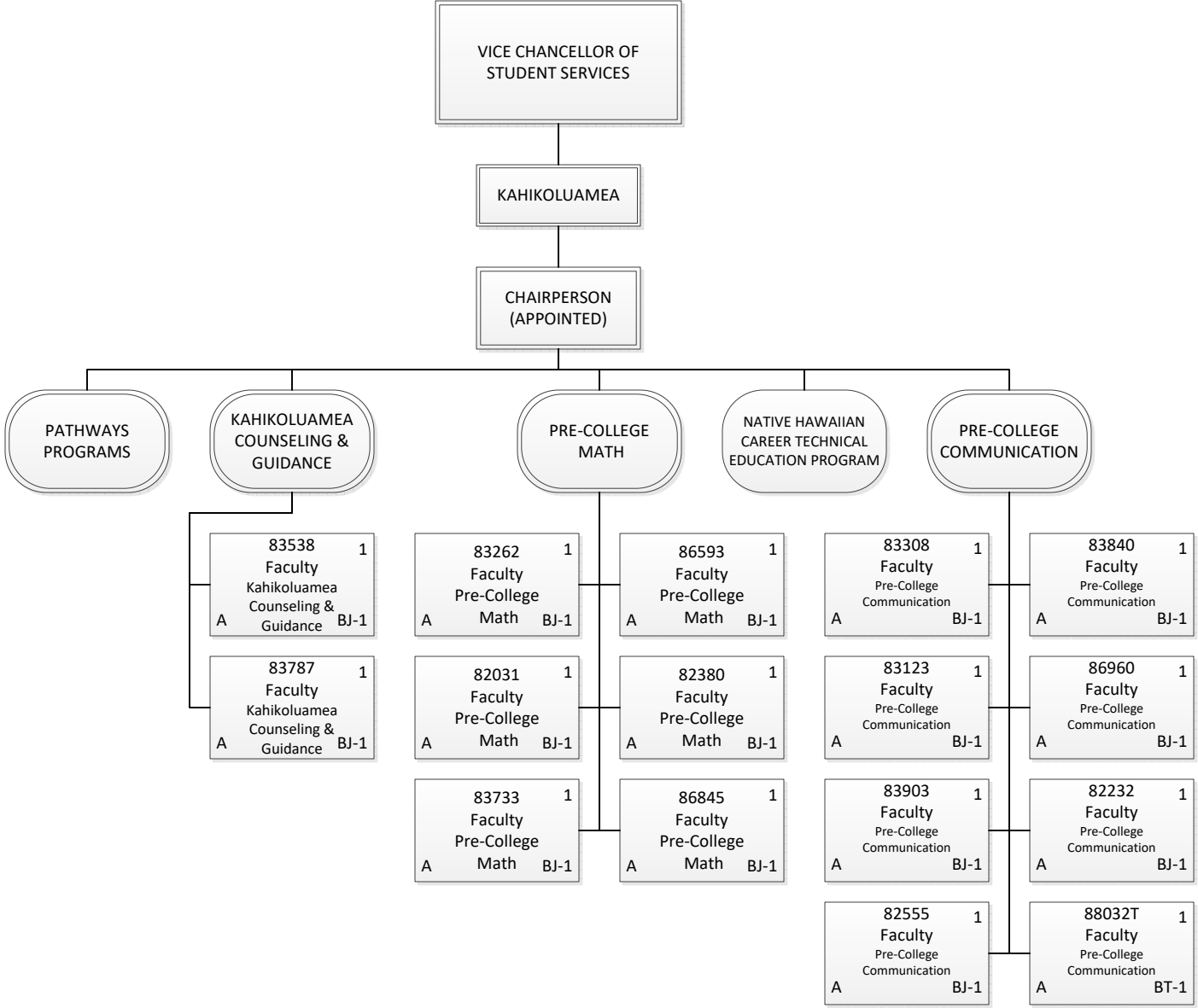


STATE OF HAWAII
UNIVERSITY OF HAWAII
KAPIOLANI COMMUNITY COLLEGE

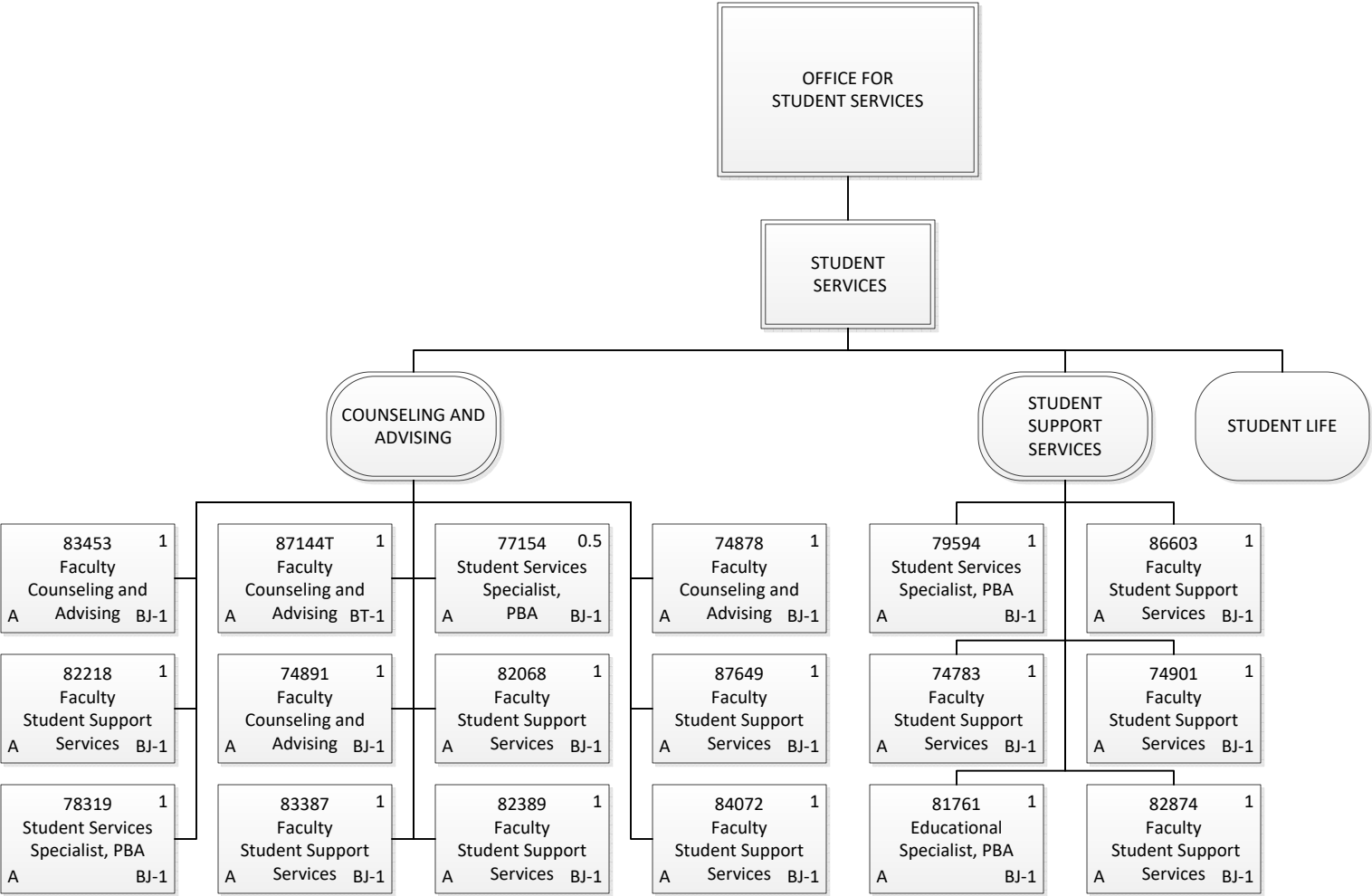
Organization Chart

Chart 4

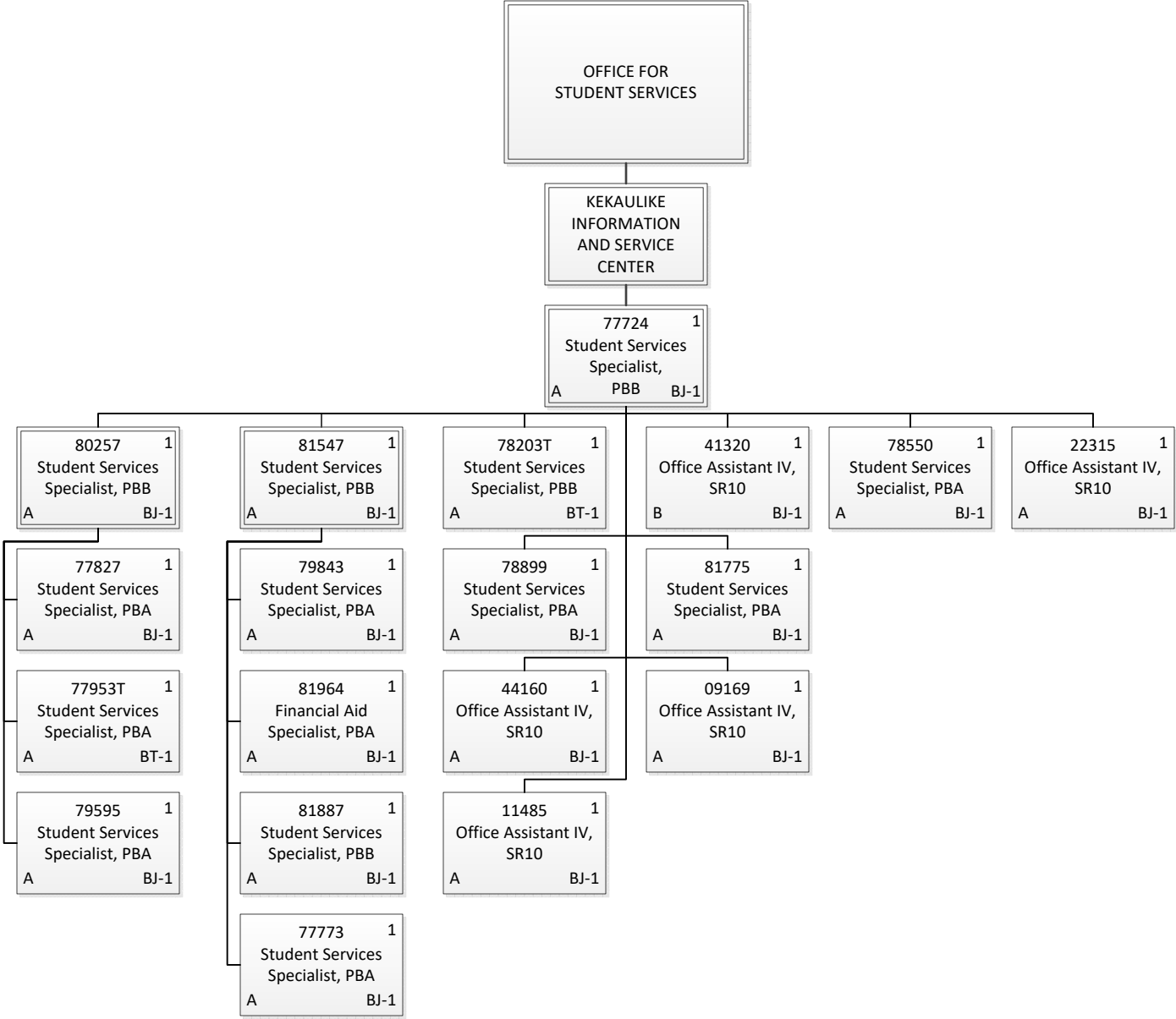
Permanent	3.00
General Funds	3.00
Grand Total	3.00



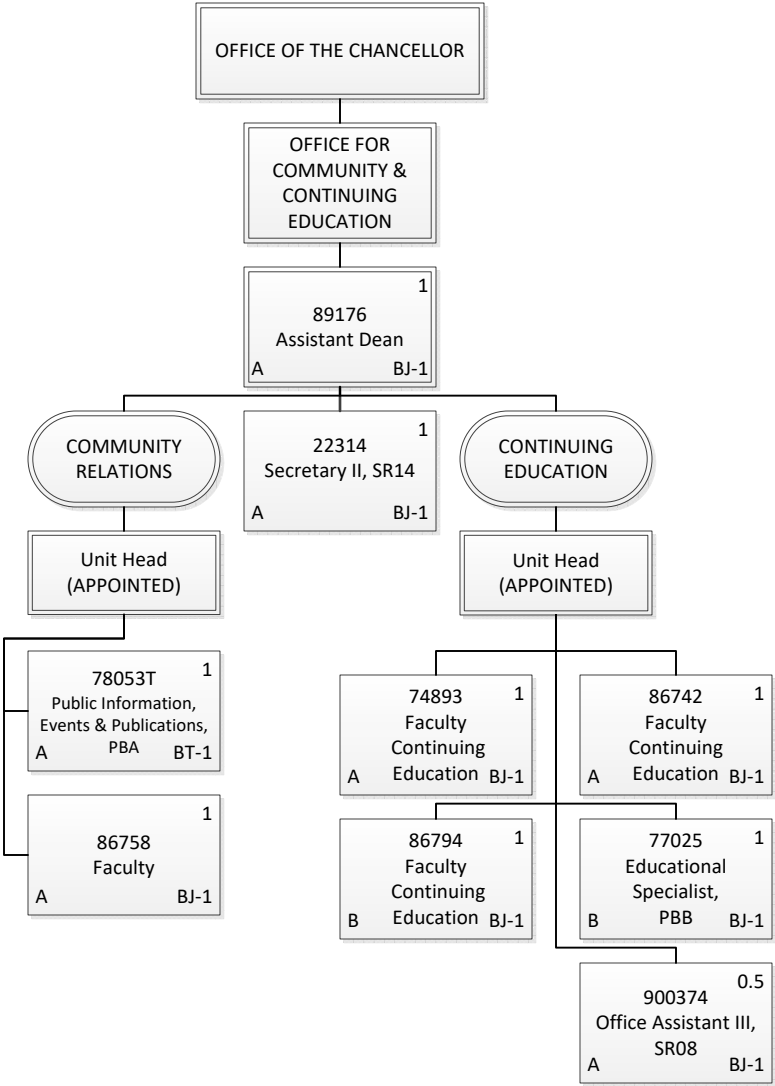
Permanent	15.00
General Funds	15.00
Temporary	1.00
General Funds	1.00
Grand Total	16.00



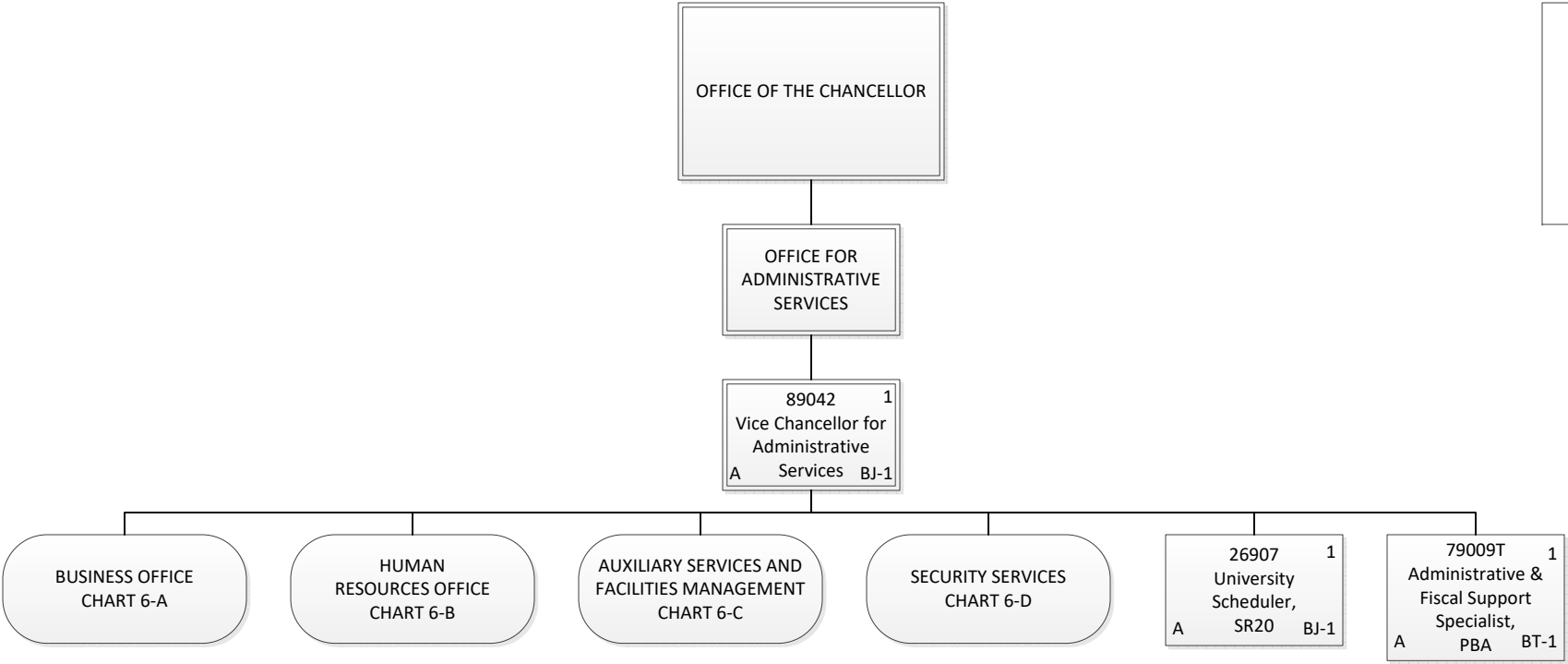
Permanent	16.50
General Funds	16.50
Temporary	1.00
General Funds	1.00
Grand Total	17.50



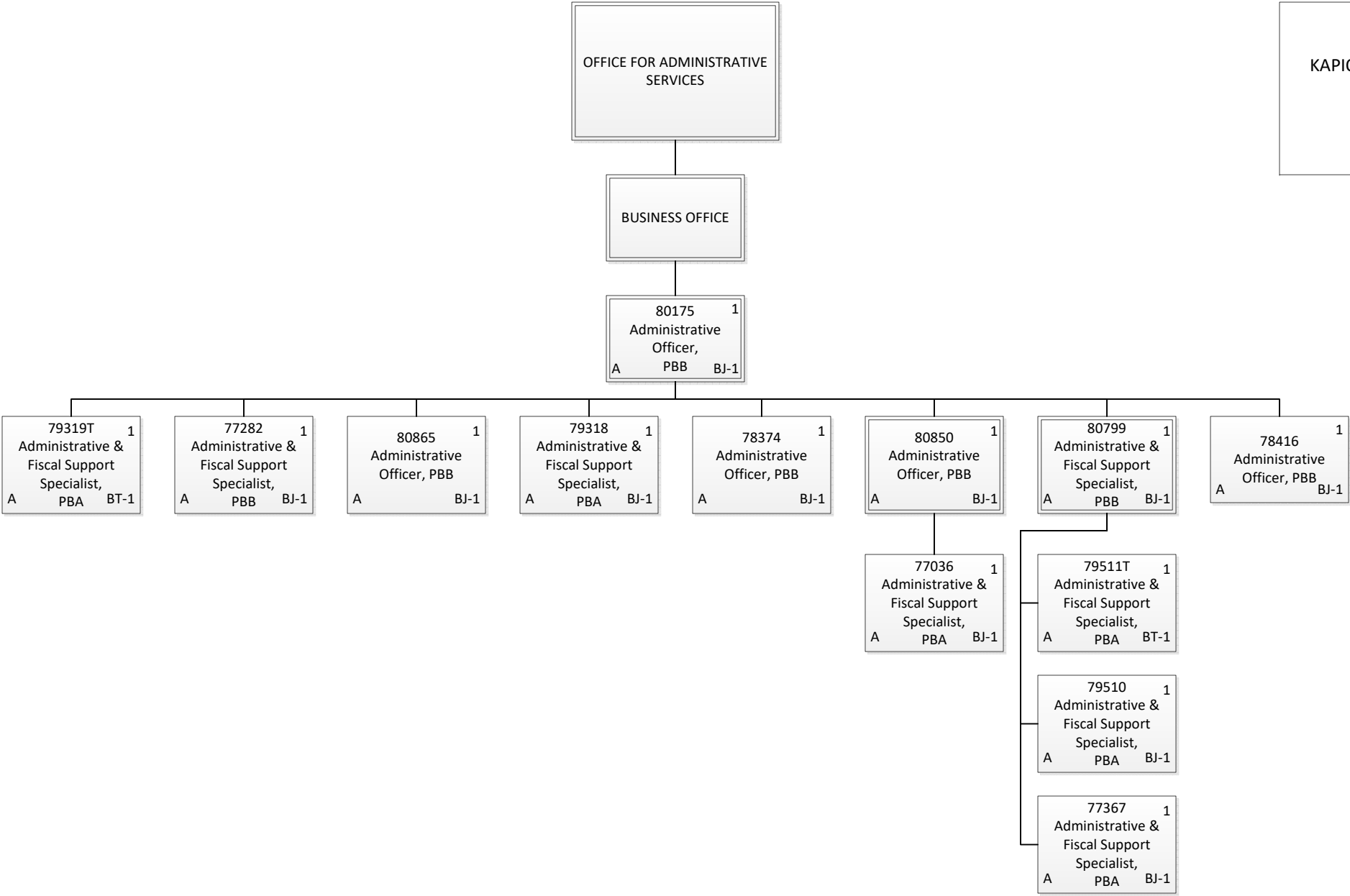
Permanent	17.00
General Funds	16.00
Special Funds	1.00
Temporary	2.00
General Funds	2.00
Grand Total	19.00



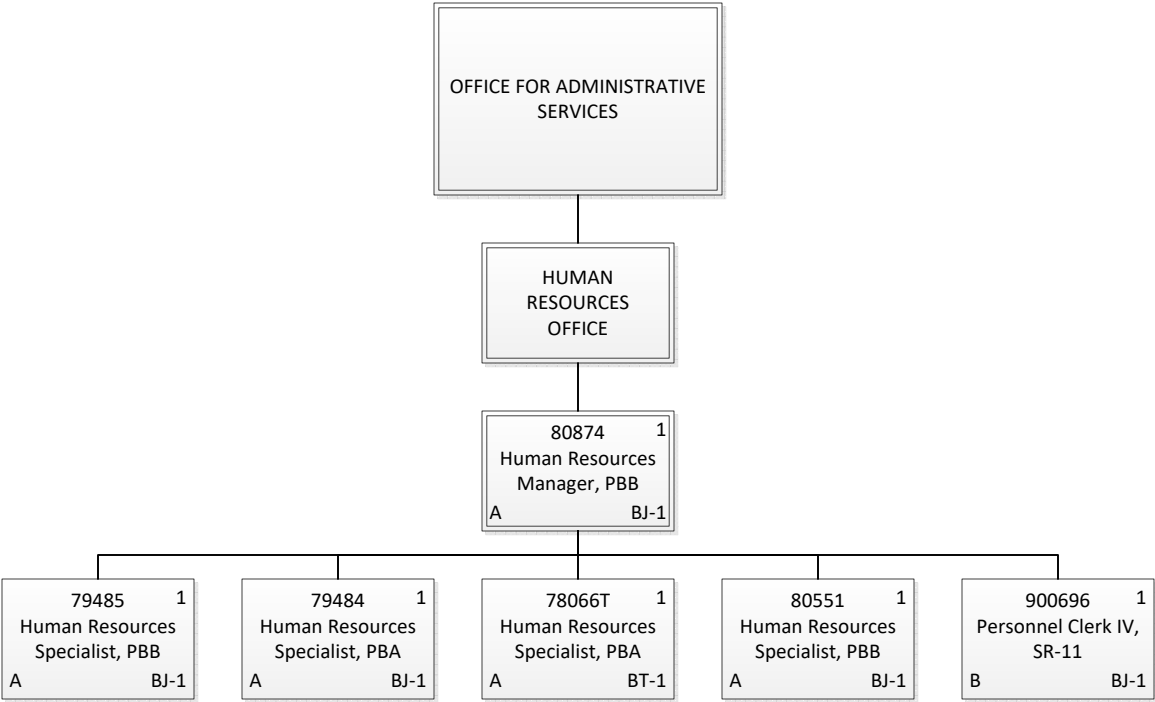
Permanent	7.50
General Funds	5.50
Special Funds	2.00
Temporary	1.00
General Funds	1.00
Grand Total	8.50



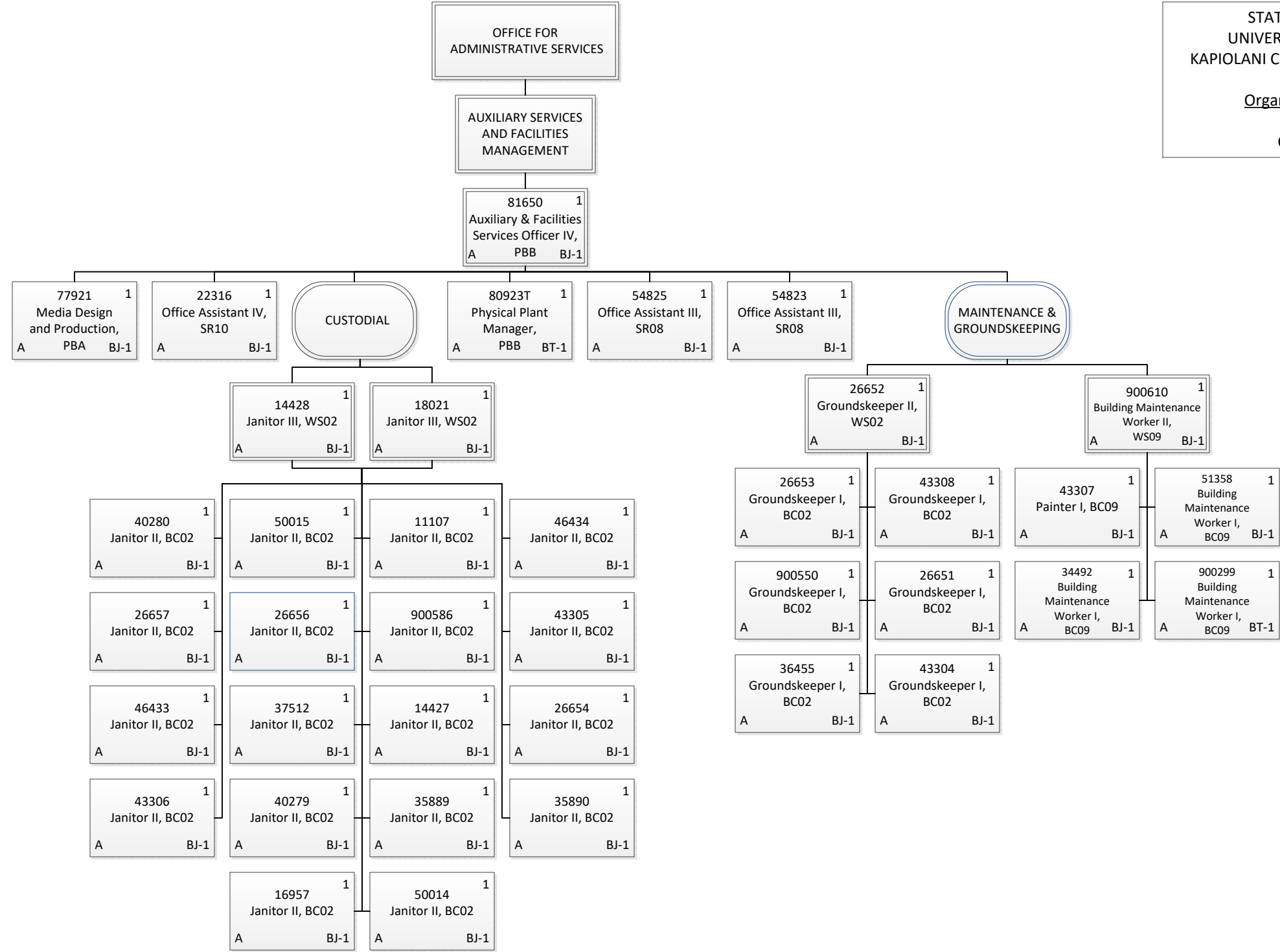
Permanent	2.00
General Funds	2.00
Temporary	1.00
General Funds	1.00
Grand Total	3.00



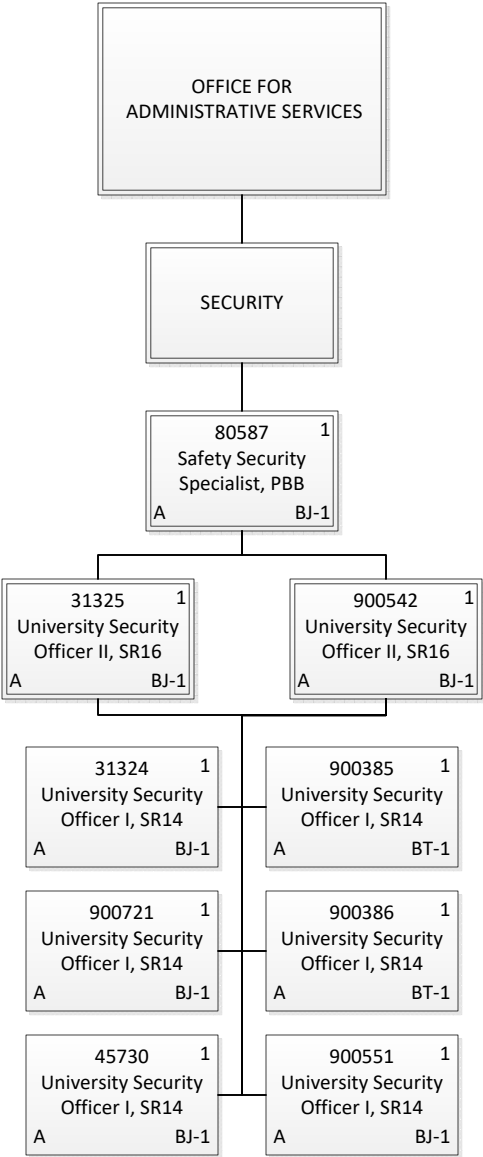
Permanent	11.00
General Funds	11.00
Temporary	2.00
General Funds	2.00
Grand Total	13.00



Permanent	5.00
General Funds	4.00
Special Funds	1.00
Temporary	1.00
General Funds	1.00
Grand Total	6.00



Permanent	36.00
General Funds	36.00
Temporary	2.00
General Funds	2.00
Grand Total	38.00



Permanent	7.00
General Funds	7.00
Temporary	2.00
General Funds	2.00
Grand Total	9.00