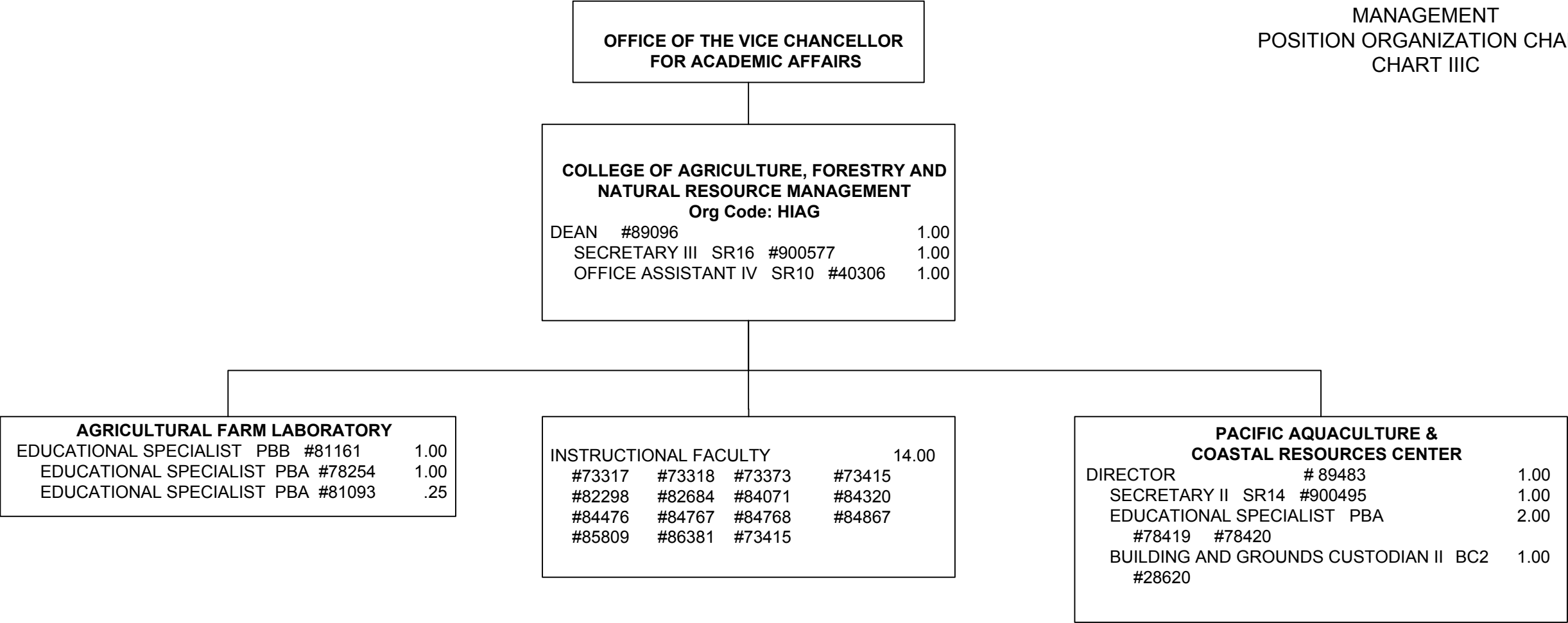
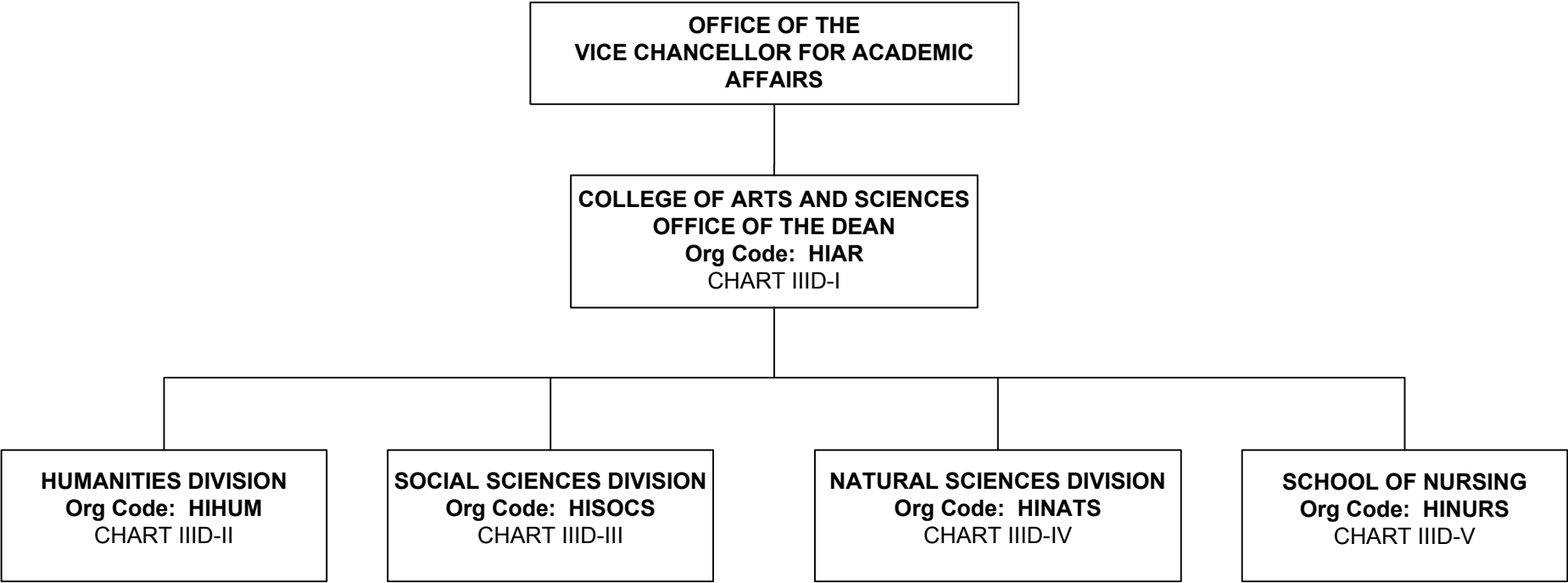
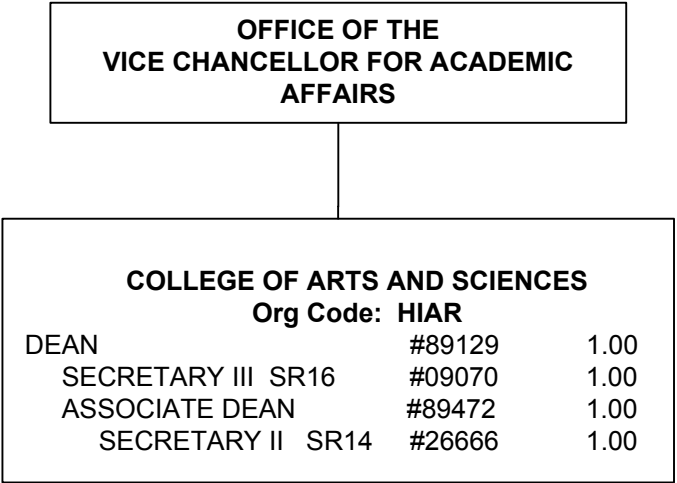


*General Funds FTE – 1.00 (Auth. Temp.)







| | | | | |
|--|-----------|-----------|--------|---------------------------------|
| HUMANITIES DIVISION | | | | |
| Org Code: HIHUM | | | | |
| CHAIR (APPOINTED FROM FACULTY POSITIONS) | | | | |
| SECRETARY II | SR14 | #21531 | | 1.00 |
| OFFICE ASSISTANT III | SR8 | #28618 | | 1.00 |
| ART Org Code: HIART | | | | |
| FACULTY: | #82001 | #82303 | #82312 | #82562 #84604 5.00 |
| ASIAN PACIFIC LANGUAGES Org Code: HIAPL | | | | |
| FACULTY: | #73407 | #82832 | #83971 | #84038 #86365 5.00 |
| COMMUNICATION Org Code: HICOM | | | | |
| FACULTY: | #73256 | #73343(S) | #82764 | #82900 #83158 #83655 8.00 |
| | #83784 | #86411 | | |
| ENGLISH Org Code: HIENG | | | | |
| FACULTY: | #73344(S) | #82171 | #82553 | #82563 #83928 #84267 6.00 |
| EUROPEAN LANGUAGES FACULTY Org code: HIEL | | | | |
| FACULTY: | #73346 | | | 1.00 |
| PERFORMING ARTS Org Code: HIMUS | | | | |
| FACULTY: | #82775 | #84213 | #84511 | 3.00 |
| PHILOSOPHY Org Code: HIPHIL | | | | |
| FACULTY: | #73368(S) | #82478 | #82352 | #82654 #84509 5.00 |

Faculty #84499 1.00

CAS-Humanities

COLLEGE OF ARTS AND SCIENCES
OFFICE OF THE DEAN

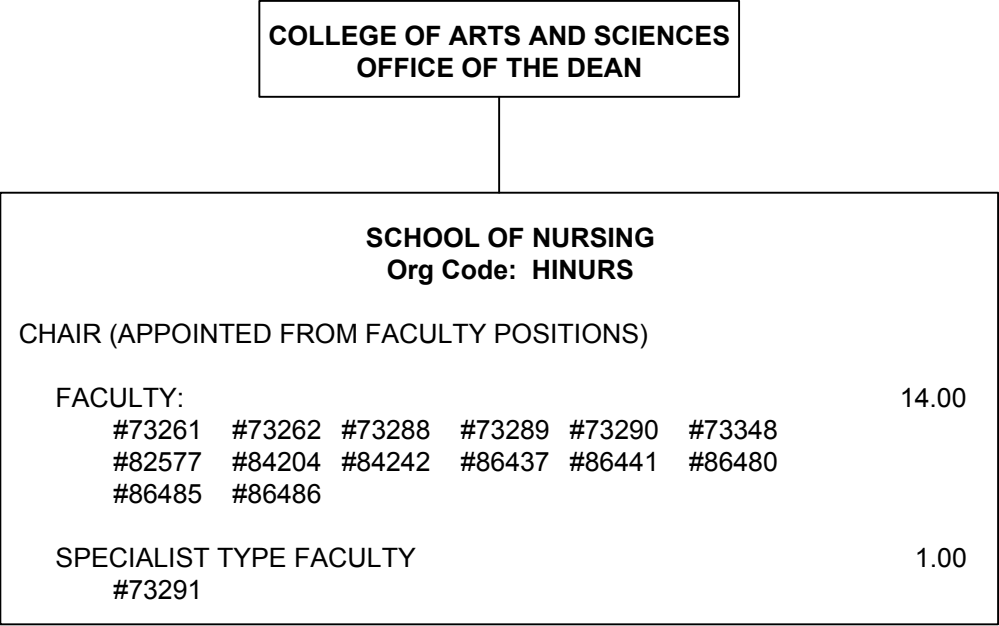
| SOCIAL SCIENCES DIVISION | | | | | | |
|--|------------------|---------|-------------|--------|--------|--------|
| Org Code: HISOCS | | | | | | |
| CHAIR (APPOINTED FROM FACULTY POSITIONS) | | | | | | |
| SECRETARY II | SR14 | #18550 | | | | 1.00 |
| OFFICE ASSISTANT III | SR8 | #28623 | | | | 1.00 |
| | | | | | | |
| ANTHROPOLOGY | Org Code: HIANTH | | | | | |
| FACULTY: #73345(S) | #73372 | #82214 | #82557 | #83005 | #83555 | 9.00 |
| | #86481 | #86488 | #99616F(S)@ | | | |
| | | | | | | |
| SCHOOL OF EDUCATION | Org Code: HIED | | | | | |
| OFFICE ASSISTANT IV | SR10 | #42269+ | | | | 1.00 |
| FACULTY: #73301 | #73464 | #82179 | #83049 | #83596 | #83791 | 7.00 |
| | | | | | #86541 | |
| | | | | | | |
| GEOGRAPHY | Org Code: HIGEOG | | | | | |
| FACULTY: #82899 | #83107 | #84766 | #86404 | #86414 | | 5.00 |
| | | | | | | |
| HISTORY | Org Code: HIHIST | | | | | |
| FACULTY: #82009 | #82556 | #84198 | #84285 | #84483 | #86360 | 6.00 |
| | | | | | | |
| KINESIOLOGY AND EXERCISE SCIENCE | Org Code: HIHPE | | | | | |
| FACULTY: #73367(S) | #73434 | #82781 | #83614 | #86416 | #87564 | 6.00 |
| | | | | | | |
| POLITICAL SCIENCE | Org Code: HIPOLS | | | | | |
| FACULTY: #73356(S) | #82309 | #82821 | #83186 | #84855 | | 7.00 |
| | #86445 | #86450 | | | | |
| | | | | | | |
| PSYCHOLOGY | Org Code: HIPSY | | | | | |
| FACULTY: #73254 | #73298 | #73362 | #82349 | #82542 | #82847 | 12.00 |
| | #82933 | #83929 | #83981 | #86362 | #86413 | #86417 |
| | | | | | | |
| SOCIOLOGY | Org Code: HISOC | | | | | |
| FACULTY: #73352 | #82169 | #84593 | #86370 | | | 4.00 |

@ Pending Establishment
+ Reports to Department Chair

COLLEGE OF ARTS AND SCIENCES
OFFICE OF THE DEAN

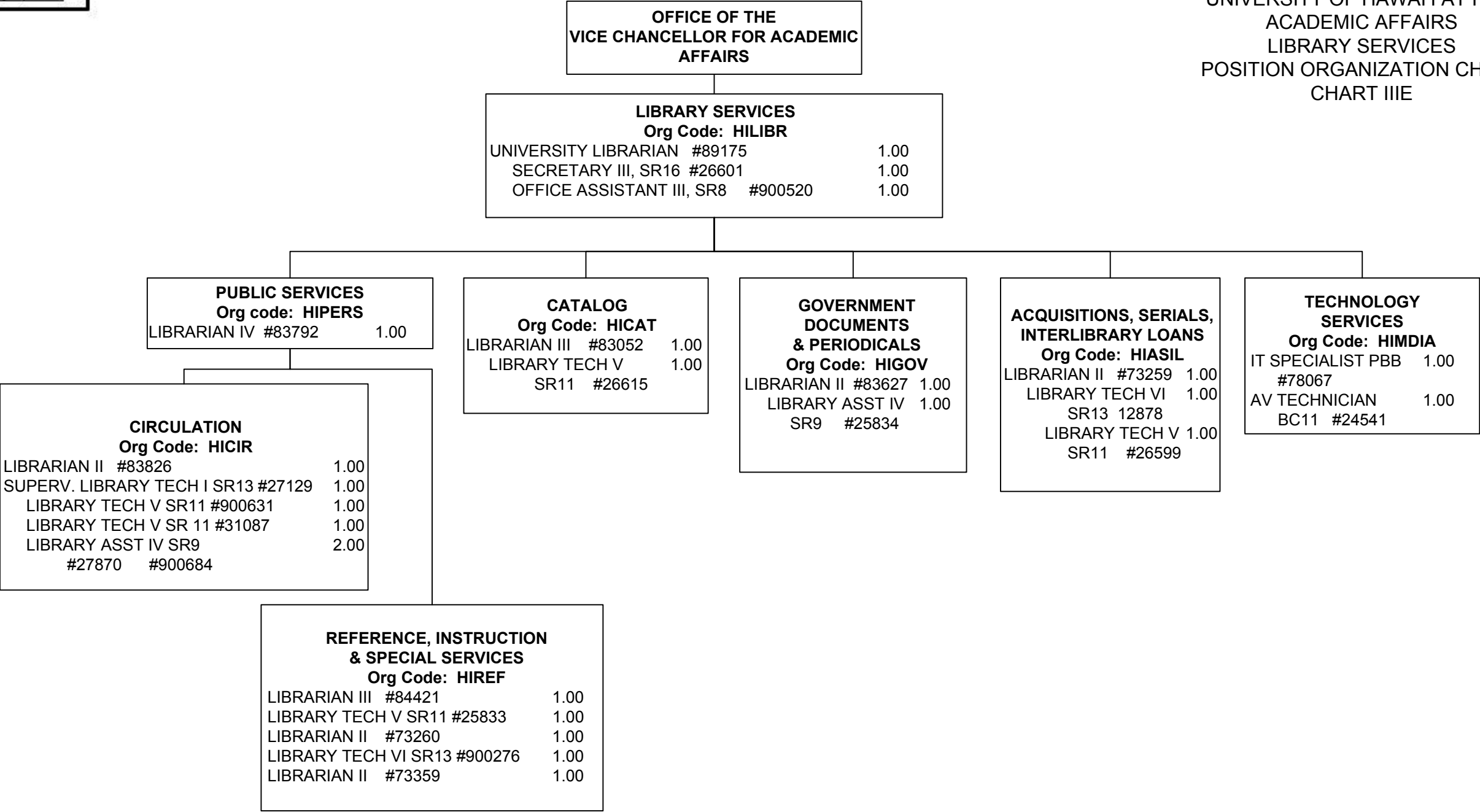
| NATURAL SCIENCES DIVISION | | | | | | | | | |
|--|--------|-----------|--------|-----------|---------|---------|-------------|--------|-------|
| Org Code: HINATS | | | | | | | | | |
| CHAIR (APPOINTED FROM FACULTY POSITIONS) | | | | | | | | | |
| SECRETARY II | SR14 | | | | #22484 | | | | 1.00 |
| OFFICE ASSISTANT III | SR8 | | | | #28622 | #900516 | | | 2.00 |
| BIOLOGY Org Code: HIBIOL | | | | | | | | | |
| LAB COORDINATOR | PBA | | | | #80902+ | | | | 1.00 |
| FACULTY: | #73299 | #73342(S) | #73363 | #73404(S) | #73435 | #82111 | #82322 | #82643 | 15.00 |
| | #82909 | #83122 | #83380 | #83424 | #83631 | #86408 | #99622F(S)@ | | |
| CHEMISTRY Org Code: HICHEM | | | | | | | | | |
| LAB COORDINATOR | PBA | | | | #80903+ | | | | 1.00 |
| FACULTY: | #73258 | #73340(S) | #73459 | #82453 | #82551 | #82648 | #82915 | #84211 | 8.00 |
| COMPUTER SCIENCE Org Code: HICSE | | | | | | | | | |
| IT SPECIALIST | PBB | | | | #78643+ | | | | 1.00 |
| FACULTY: | #73257 | #73371 | #83269 | #83648 | #83782 | #86449 | | | 6.00 |
| GEOLOGY-GEOPHYSICS Org Code: HIGG | | | | | | | | | |
| EDUCATIONAL SPECIALIST | PBB | | | | #81750+ | | | | 1.00 |
| FACULTY: | #82686 | #82833 | #86412 | #87561 | | | | | 4.00 |
| MARINE SCIENCE Org Code: HIMARE | | | | | | | | | |
| EDUCATIONAL SPECIALIST | PBB | | | | #78641+ | #78835+ | | | 2.00 |
| FACULTY: | #82358 | #83157 | #83187 | #83190 | #83207 | #84233 | #86439 | | 9.00 |
| | #86483 | #86540 | | | | | | | |
| MATHEMATICS Org Code: HIMATH | | | | | | | | | |
| FACULTY: | #73255 | #73341(S) | #73461 | #73462 | #82381 | #82801 | #83503 | | 13.00 |
| | #84063 | #84068 | #86361 | #86366 | #86382 | #86482 | | | |
| PHYSICS AND ASTRONOMY Org Code: HIPHYS | | | | | | | | | |
| EDUCATIONAL SPECIALIST | PBB | | | | #80997+ | | | | 1.00 |
| FACULTY: | #73350 | #83033 | #83815 | #86373 | #86535 | | | | 5.00 |
| #99620F(S)@ | | | | | | | | | 1.00 |

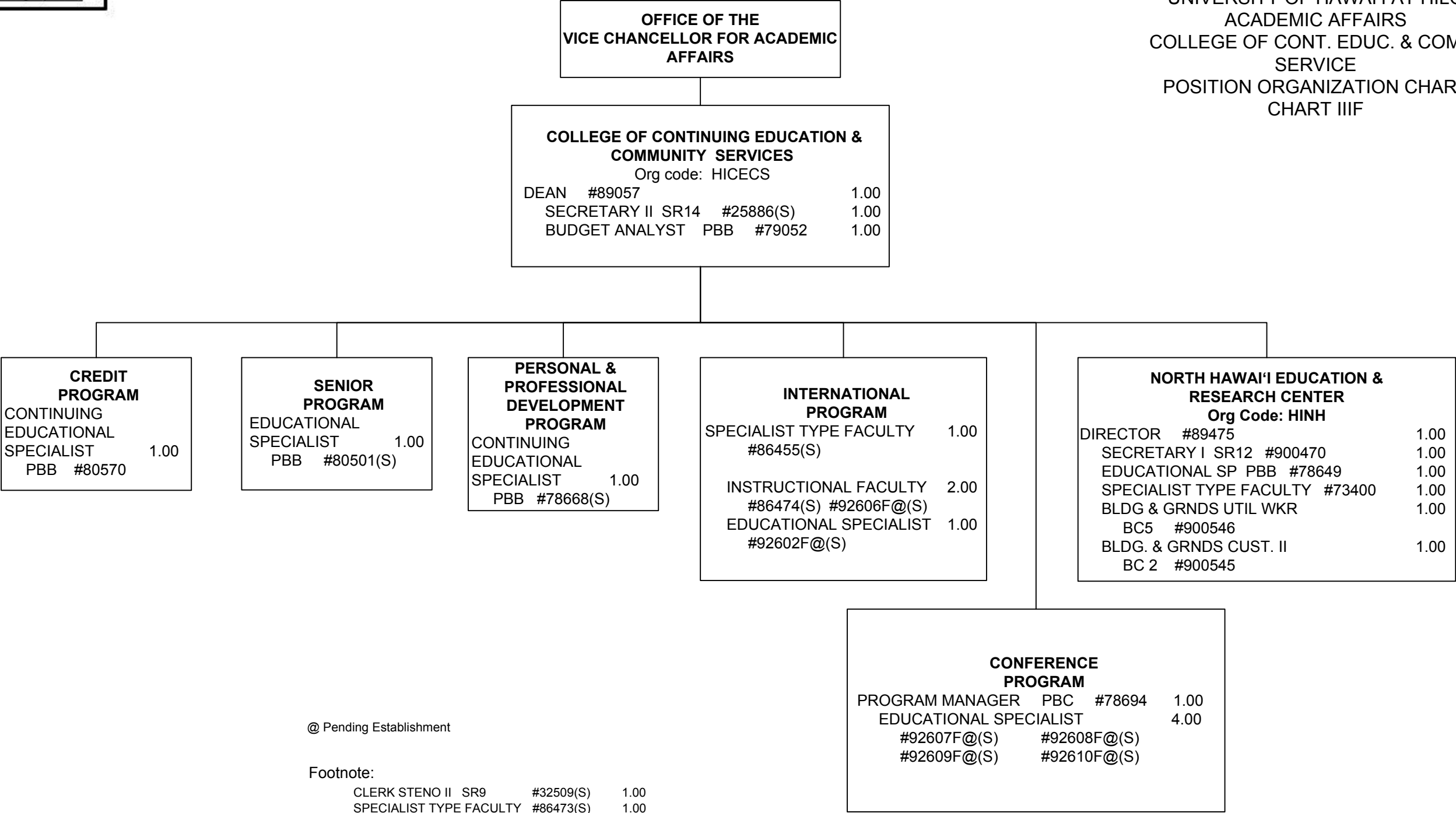
@ Pending Establishment
+ Reports to Department Chairs



Footnote:

Specialist Type Faculty #86409 .50

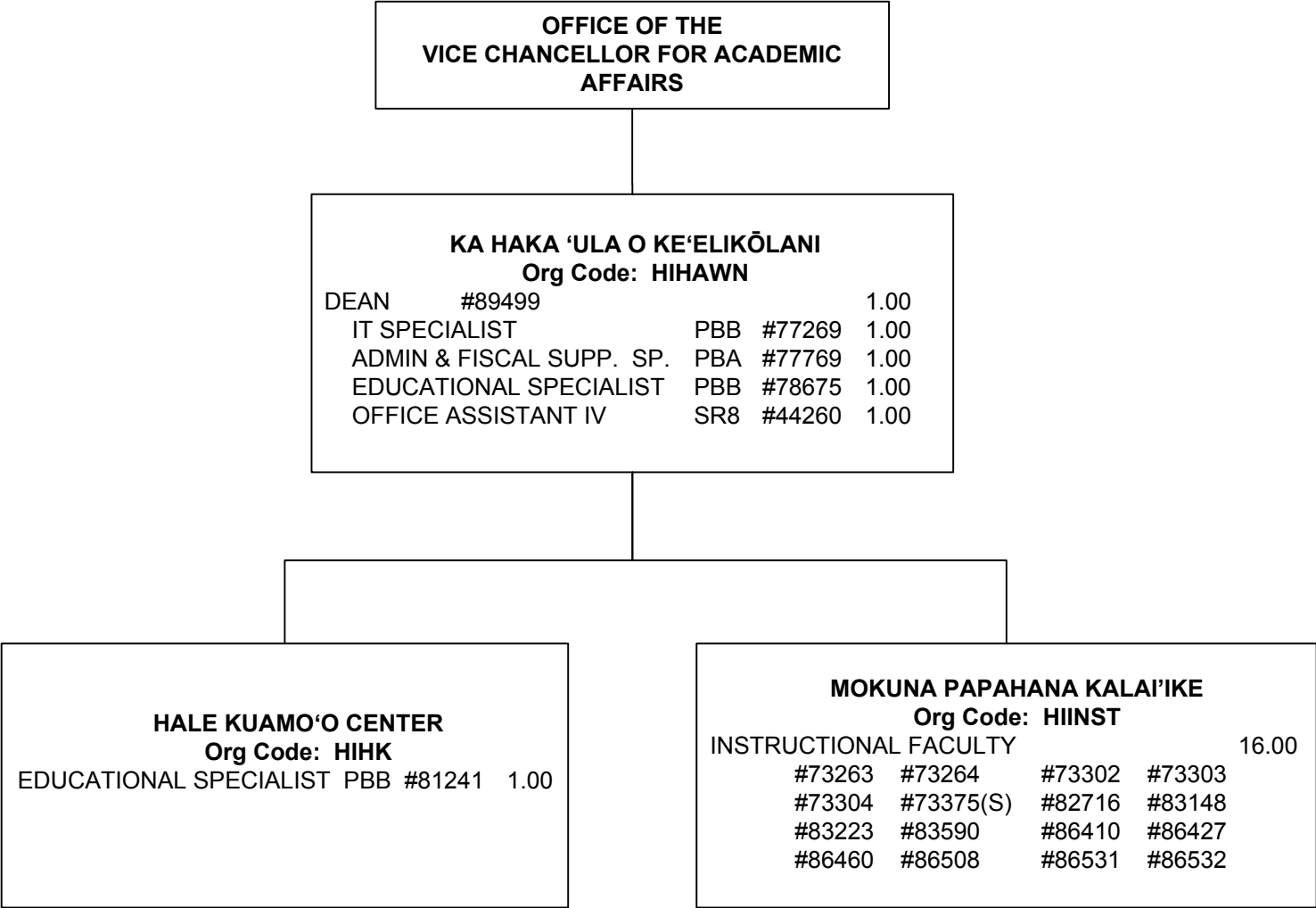


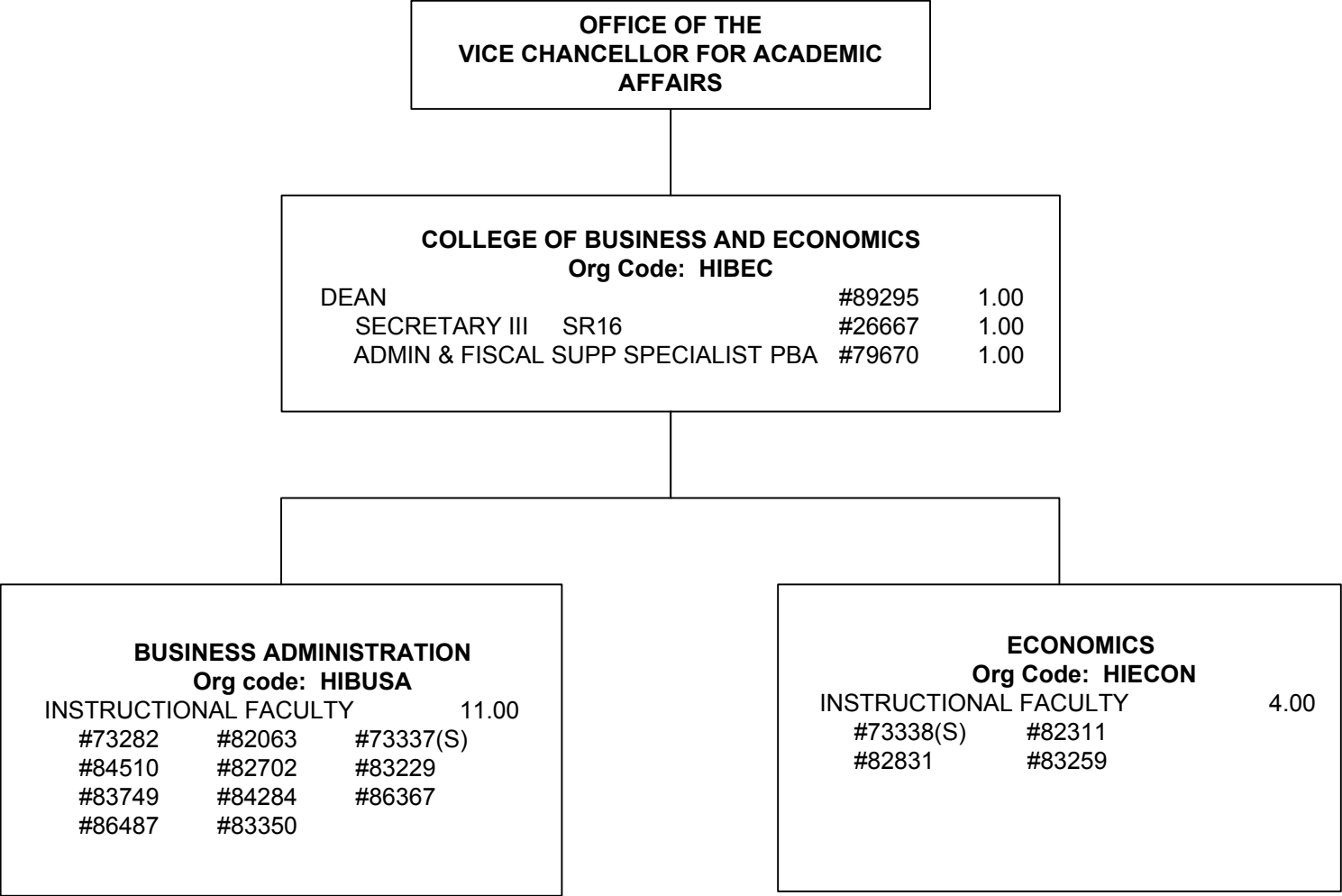


@ Pending Establishment

Footnote:

| | | | |
|-------------------------|-----------|------------|------|
| CLERK STENO II | SR9 | #32509(S) | 1.00 |
| SPECIALIST TYPE FACULTY | #86473(S) | | 1.00 |
| ACCOUNT CLERK III | SR11 | #900503(S) | 1.00 |

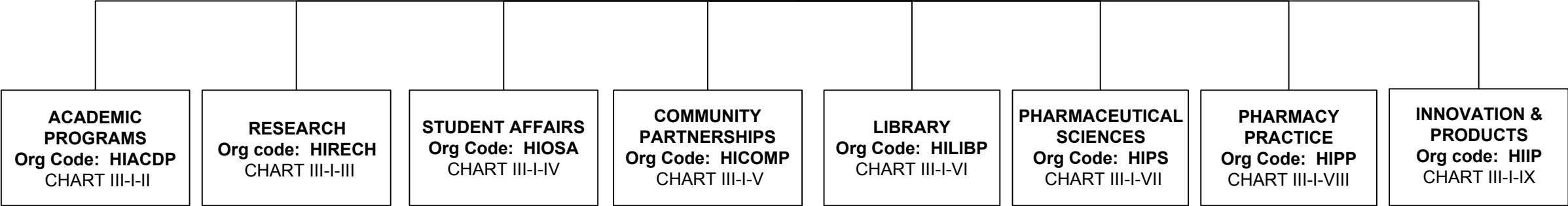


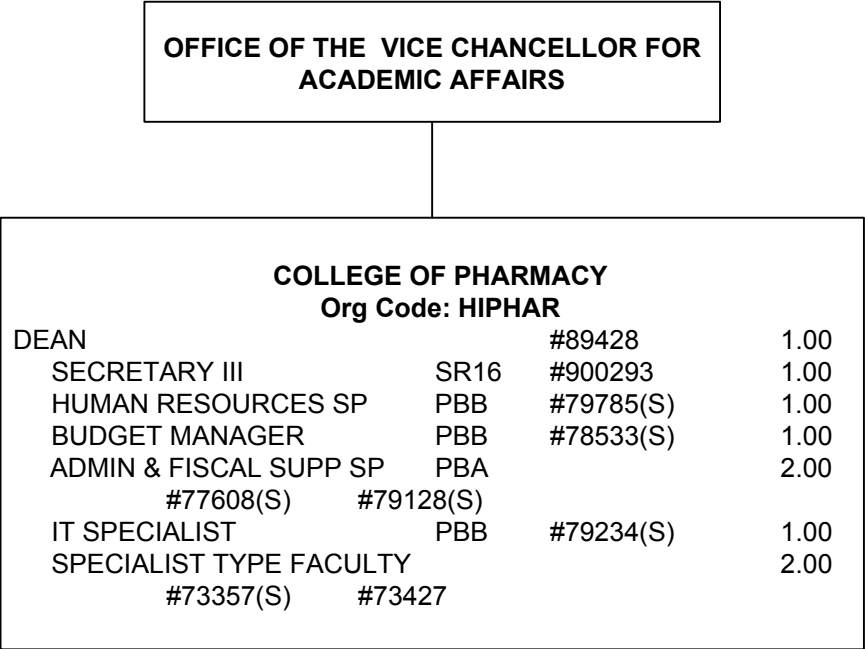


Footnote:
OFFICE ASSISTANT III SR8 #45475 1.00

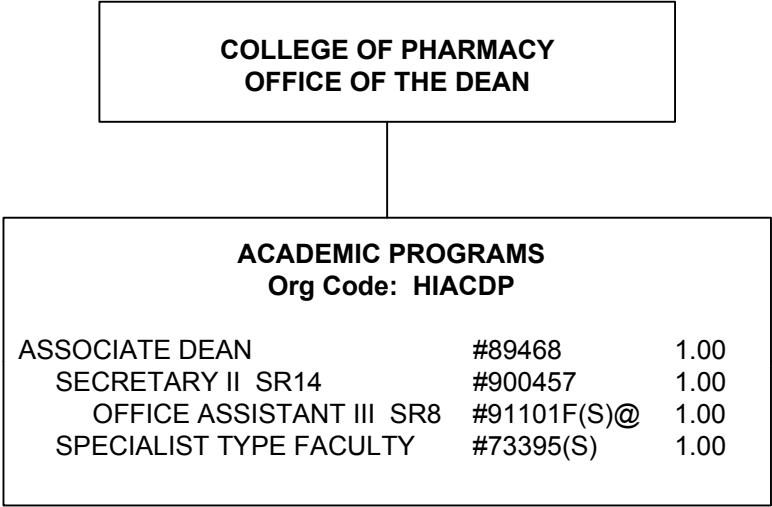
**OFFICE OF THE VICE CHANCELLOR
FOR ACADEMIC AFFAIRS**

**COLLEGE OF PHARMACY
OFFICE OF THE DEAN
Org Code: HIPHAR
CHART III-I-I**

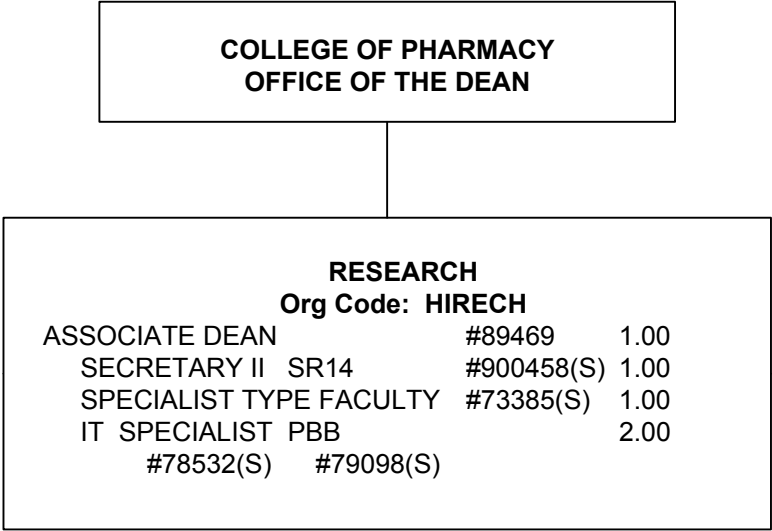


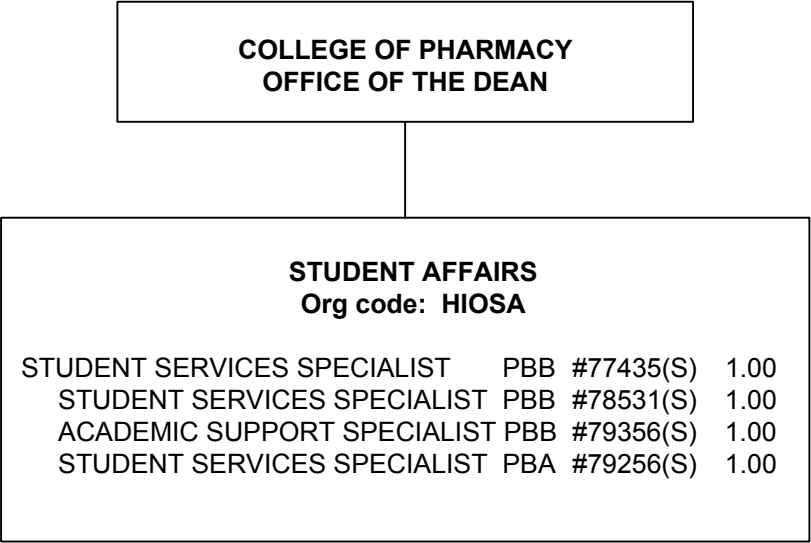


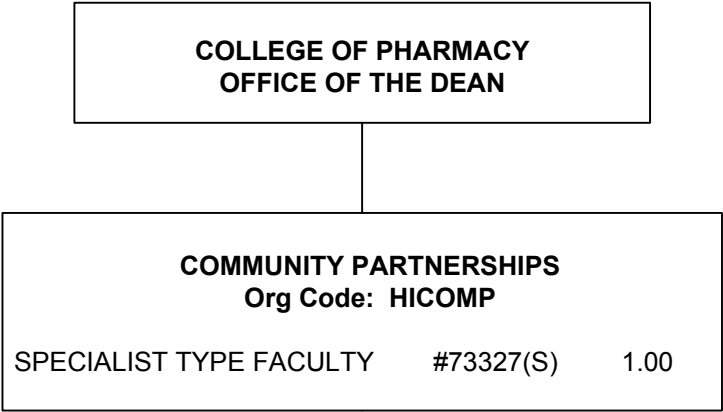
Footnote:
OFFICE ASSISTANT III SR8 #900525(S) 1.00

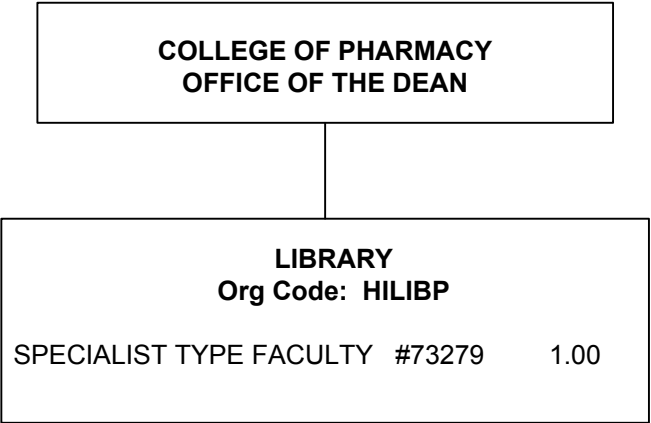


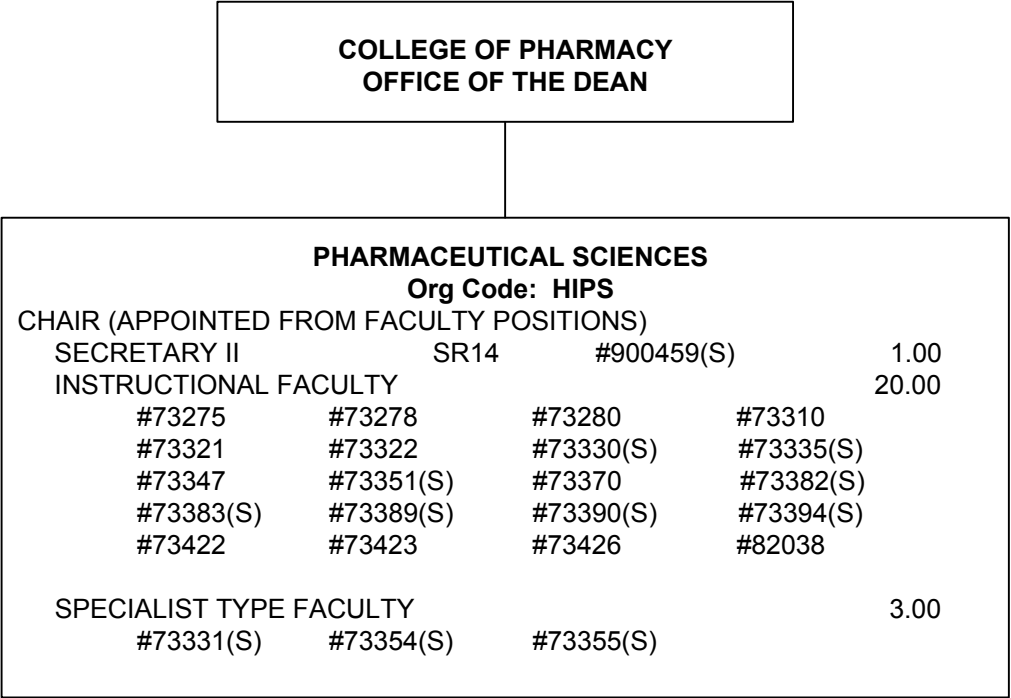
@ Pending Establishment











Footnote:

OFFICE ASSISTANT III SR8 #900633(S) 1.00

