

STATE OF HAWAIʻI

UNIVERSITY OF HAWAIʻI

UNIVERSITY OF HAWAIʻI AT MĀNOA

OFFICE OF THE VICE CHANCELLOR FOR ACADEMIC AFFAIRS

COLLEGES OF ARTS AND SCIENCES

COLLEGE OF ARTS AND HUMANITIES

Organization Chart

Chart I

DEPARTMENT TOTAL: PERM TEMP

General Funds: 197.25 3.00

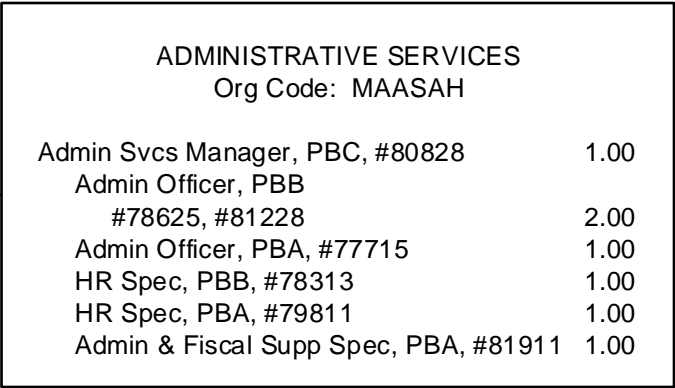
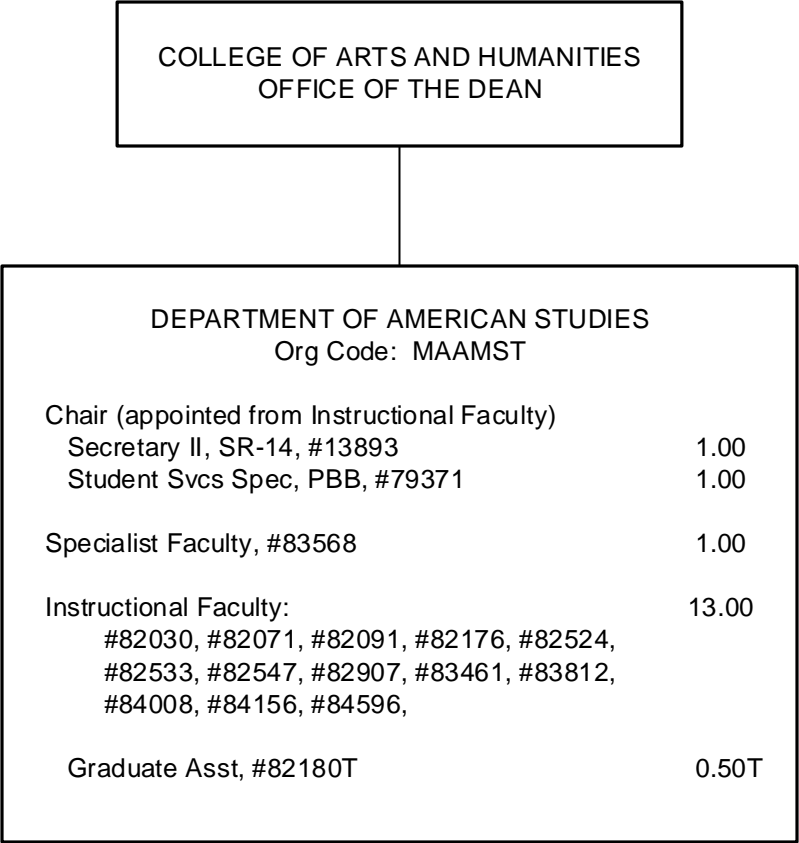


CHART TOTAL: PERM TEMP

General Funds: 11.00 - -

STATE OF HAWAII
UNIVERSITY OF HAWAII
UNIVERSITY OF HAWAII AT MĀNOA
OFFICE OF THE VICE CHANCELLOR FOR ACADEMIC AFFAIRS
COLLEGES OF ARTS AND SCIENCES
COLLEGE OF ARTS AND HUMANITIES
DEPARTMENT OF AMERICAN STUDIES
Organization Chart
Chart II-A



COLLEGE OF ARTS AND HUMANITIES

OFFICE OF THE DEAN

DEPARTMENT OF ART AND ART HISTORY

Org Code: MAARTH

| | | |
|--|--|-------|
| Chair (appointed from Instructional Faculty) | | |
| Admin & Fiscal Supp Spec, PBA, #77525 | | 1.00 |
| Office Asst III, SR-08, #14366 | | 1.00 |
| Account Clerk II, SR-08, #47617 | | 1.00 |
| Educational Spec, PBB: | | 5.00 |
| #80499, #80523, #80667, #80726, #81319 | | |
| | | |
| Machinist, PBB, #81041 | | 1.00 |
| | | |
| Associate Chair (appointed from Instructional Faculty) | | |
| | | |
| Specialist Faculty, #83222 | | 1.00 |
| | | |
| Instructional Faculty: | | 19.00 |
| #82067, #82142, #82187, #82275, #82445, | | |
| #82501, #82583, #82584, #82886, #82995, | | |
| #83230, #83315, #83323, #83588, #83752, | | |
| #83956, #84050, #84232, #84464 | | |
| | | |
| Graduate Asst: | | 3.00 |
| #82514, #82601, #88120, #88152, #88242, | | 0.50T |
| #88456, #82136T | | |

STATE OF HAWAI'I

UNIVERSITY OF HAWAI'I

UNIVERSITY OF HAWAI'I AT MĀNOA

OFFICE OF THE VICE CHANCELLOR FOR ACADEMIC AFFAIRS

COLLEGES OF ARTS AND SCIENCES

COLLEGE OF ARTS AND HUMANITIES

DEPARTMENT OF ART AND ART HISTORY

Organization Chart

Chart II-B

COLLEGE OF ARTS AND HUMANITIES
OFFICE OF THE DEAN

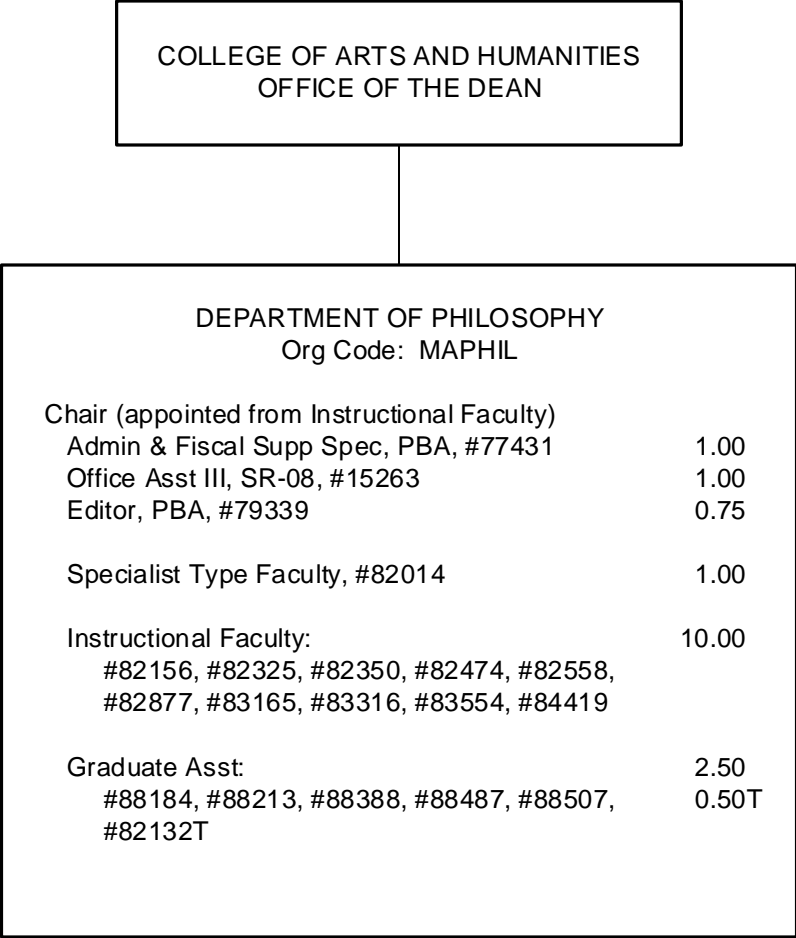
STATE OF HAWAIʻI
UNIVERSITY OF HAWAIʻI
UNIVERSITY OF HAWAIʻI AT MĀNOA
OFFICE OF THE VICE CHANCELLOR FOR ACADEMIC AFFAIRS
COLLEGES OF ARTS AND SCIENCES
COLLEGE OF ARTS AND HUMANITIES
DEPARTMENT OF HISTORY
Organization Chart
Chart II-C

| | | |
|---|-------|--|
| DEPARTMENT OF HISTORY Org Code: MAHIST | | |
| Chair (appointed from Instructional Faculty) | | |
| Student Svcs Spec, PBA, #78140 | 1.00 | |
| Associate Chair (appointed from Instructional Faculty) | | |
| Secretary I, SR-12, #15261 | 1.00 | |
| Director of World Civilizations Program (appointed from Instructional Faculty) | | |
| Instructional Faculty: | 29.00 | |
| #82025, #82044, #82147, #82164, #82191, #82370, #82428, #82475, #82612, #82655, #83010, #83318, #83322, #83415, #83576, #83676, #83754, #83989, #84155, #84161, #84241, #84333, #84415, #84432, #84461, #84524, #84794, #84839, #85448 | | |
| Graduate Asst: | 2.50 | |
| #88030, #88323, #88329, #88342, #88547 | | |

COLLEGE OF ARTS AND HUMANITIES
OFFICE OF THE DEAN

| DEPARTMENT OF MUSIC | | |
|--|--|-------|
| Org Code: MAMUS | | |
| Chair (appointed from Instructional Faculty) | | |
| Secretary II, SR-14, #11959 | | 1.00 |
| Educational Spec, PBB: | | 1.50 |
| #80381, #80866 (0.50) | | |
| Admin & Fiscal Support Spec, PBA, #81033 | | 1.00 |
| Educational Spec, PBA, #81965 | | 1.00 |
| Associate Chair (appointed from Instructional Faculty) | | |
| Instructional Faculty: | | 20.00 |
| #82213, #82401, #82438, #82592, #82739, | | |
| #82752, #82818, #82836, #82948, #83048, | | |
| #83284, #83361, #83454, #83686, #84061, | | |
| #84387, #84406, #84442, #84635, #85088 | | |
| Graduate Asst: | | 3.00 |
| #88019, #88136, #88237, #88265, #88283, | | |
| #88603 | | |

STATE OF HAWAI'I
UNIVERSITY OF HAWAI'I
UNIVERSITY OF HAWAI'I AT MĀNOA
OFFICE OF THE VICE CHANCELLOR FOR ACADEMIC AFFAIRS
COLLEGES OF ARTS AND SCIENCES
COLLEGE OF ARTS AND HUMANITIES
DEPARTMENT OF MUSIC
Organization Chart
Chart II-D



STATE OF HAWAIʻI
UNIVERSITY OF HAWAIʻI
UNIVERSITY OF HAWAIʻI AT MĀNOA
OFFICE OF THE VICE CHANCELLOR FOR ACADEMIC AFFAIRS
COLLEGES OF ARTS AND SCIENCES
COLLEGE OF ARTS AND HUMANITIES
DEPARTMENT OF PHILOSOPHY
Organization Chart
Chart II-E

COLLEGE OF ARTS AND HUMANITIES
OFFICE OF THE DEAN

| | | |
|---|-------|--|
| DEPARTMENT OF RELIGION Org Code: MAREL | | |
| Chair (appointed from Instructional Faculty) | | |
| Secretary II, SR-14, #15012 | 1.00 | |
| Instructional Faculty: | 6.00 | |
| #82065, #82203, #82205, #82340, #84056, #84089 | | |
| Graduate Asst: | 3.50 | |
| #82189, #82590, #88026, #88084, #88093, #88282, #88556, #82123T | 0.50T | |

STATE OF HAWAIʻI
UNIVERSITY OF HAWAIʻI
UNIVERSITY OF HAWAIʻI AT MĀNOA
OFFICE OF THE VICE CHANCELLOR FOR ACADEMIC AFFAIRS
COLLEGES OF ARTS AND SCIENCES
COLLEGE OF ARTS AND HUMANITIES
DEPARTMENT OF RELIGION
Organization Chart
Chart II-F

COLLEGE OF ARTS AND HUMANITIES
OFFICE OF THE DEAN

| | |
|--|-------|
| DEPARTMENT OF COMMUNICOLOGY | |
| Org Code: MASP | |
| Chair (appointed from instructional faculty) | |
| Secretary II, SR-14, #6732 | 1.00 |
| Office Asst III, SR-08, #35122 | 1.00 |
| Instructional Faculty: | 9.00 |
| #82158, #82237, #82375, #82437, #82596, | |
| #83777, #82504, #84579, #84859 | |
| Graduate Asst: | 1.50 |
| #82525, #82526, #82604, #82119T | 0.50T |

STATE OF HAWAIʻI
UNIVERSITY OF HAWAIʻI
UNIVERSITY OF HAWAIʻI AT MĀNOA
OFFICE OF THE VICE CHANCELLOR FOR ACADEMIC AFFAIRS
COLLEGES OF ARTS AND SCIENCES
COLLEGE OF ARTS AND HUMANITIES
DEPARTMENT OF COMMUNICOLOGY
Organization Chart
Chart II-G

COLLEGE OF ARTS AND HUMANITIES

OFFICE OF THE DEAN

| | | |
|--|--|-------|
| DEPARTMENT OF THEATRE AND DANCE | | |
| Org Code: MATD | | |
| Chair (appointed from Instructional Faculty) | | |
| Secretary II, SR-14, #13647 | | 1.00 |
| Theater/Stage Manager, PBB, #80119 | | 1.00 |
| Theater Technician, PBB: | | 3.00 |
| #78466, #80700, #81269 | | |
| Director of Dance Program | | |
| (appointed from Instructional Faculty) | | |
| Admin & Fiscal Supp Spec, PBA, #77076 | | 1.00 |
| Instructional Faculty: | | 17.00 |
| #82110, #82161, #82227, #82234, #82260, | | |
| #82302, #82640, #83250, #83252, #83337, | | |
| #83436, #83439, #83591, #84095, #84434, | | |
| #84574, #84678 | | |
| Graduate Asst: | | 6.00 |
| #82419, #82549, #82568, #88000, #88051, | | 0.50T |
| #88052, #88053, #88127, #88207, #88211, | | |
| #88246, #88324, #82117T | | |

STATE OF HAWAI'I

UNIVERSITY OF HAWAI'I

UNIVERSITY OF HAWAI'I AT MĀNOA

OFFICE OF THE VICE CHANCELLOR FOR ACADEMIC AFFAIRS

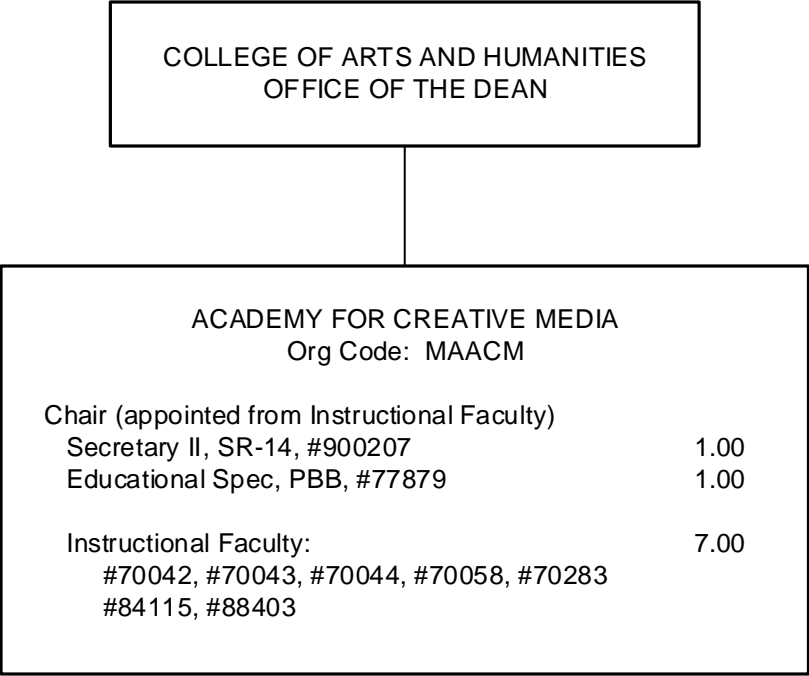
COLLEGES OF ARTS AND SCIENCES

COLLEGE OF ARTS AND HUMANITIES

DEPARTMENT OF THEATRE AND DANCE

Organization Chart

Chart II-H



STATE OF HAWAIʻI
UNIVERSITY OF HAWAIʻI
UNIVERSITY OF HAWAIʻI AT MĀNOA
OFFICE OF THE VICE CHANCELLOR FOR ACADEMIC AFFAIRS
COLLEGES OF ARTS AND SCIENCES
COLLEGE OF ARTS AND HUMANITIES
ACADEMY FOR CREATIVE MEDIA
Organization Chart
Chart II-I