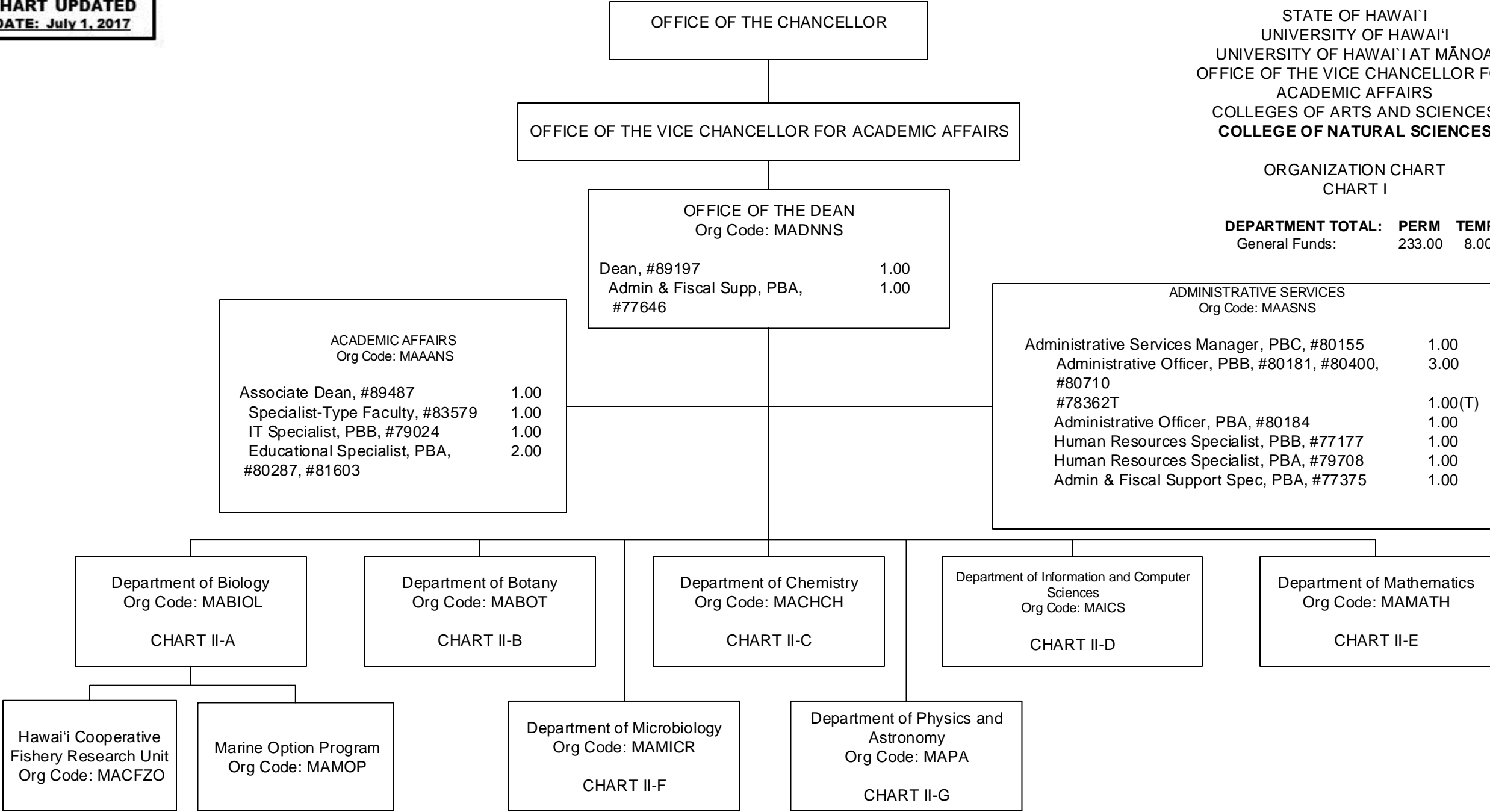
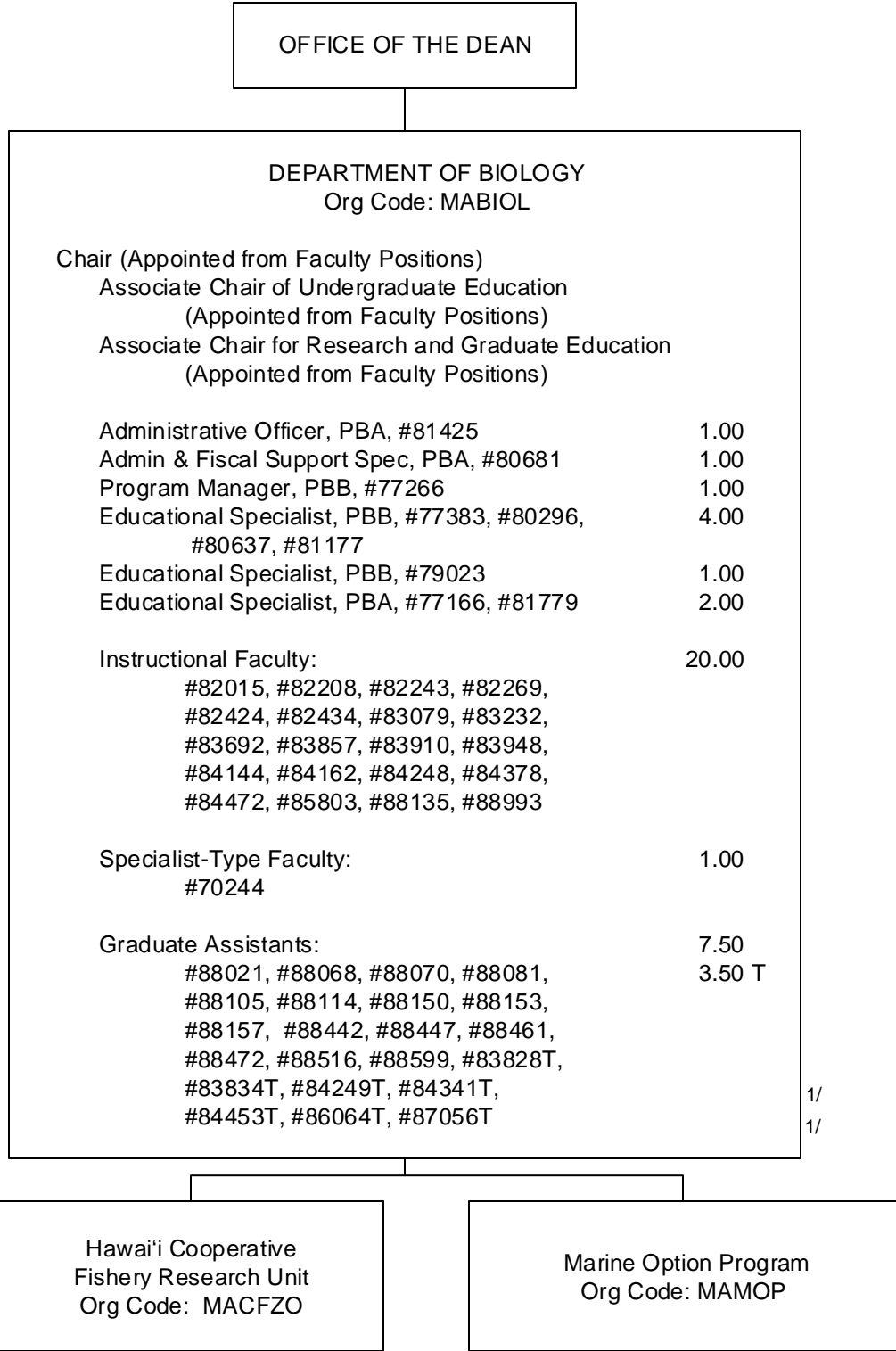


ORGANIZATION CHART
CHART I

DEPARTMENT TOTAL: PERM TEMP
General Funds: 233.00 8.00



1/ Admin & Fiscal Supp Spec, #78362T in Administrative Services is an appropriated temporary position



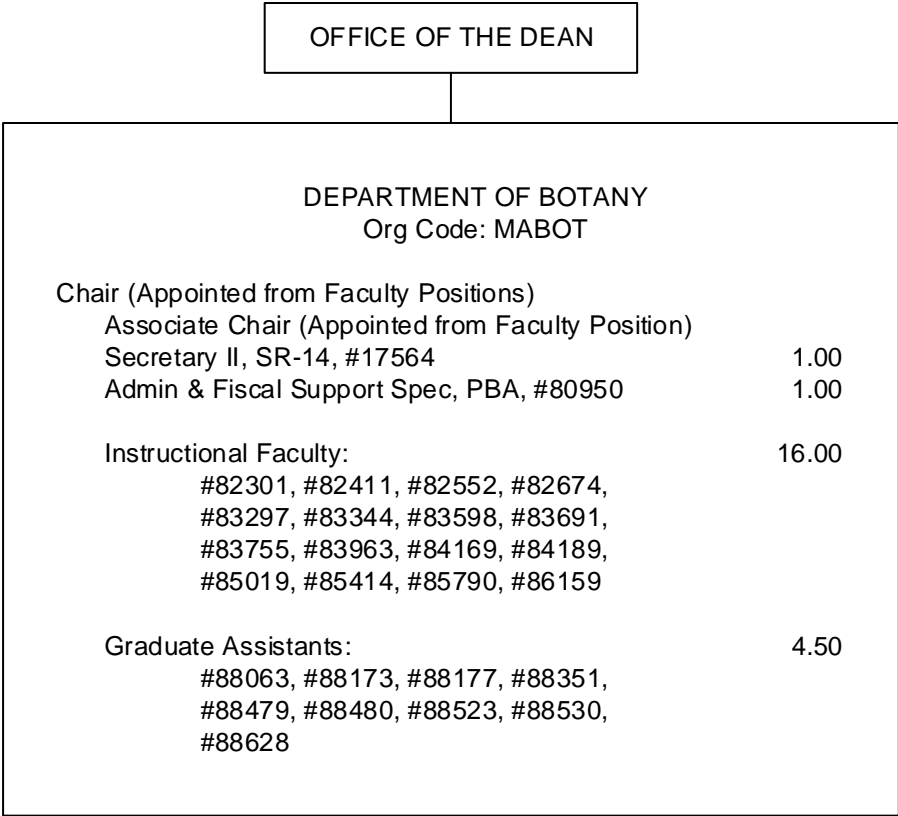
STATE OF HAWAI'I
UNIVERSITY OF HAWAI'I
UNIVERSITY OF HAWAI'I AT MĀNOA
OFFICE OF THE VICE CHANCELLOR FOR
ACADEMIC AFFAIRS
COLLEGES OF ARTS AND SCIENCES
COLLEGE OF NATURAL SCIENCES

DEPARTMENT OF BIOLOGY
POSITION ORGANIZATION CHART

CHART II-A

CHART TOTAL:	PERM	TEMP
General Funds:	38.50	3.50

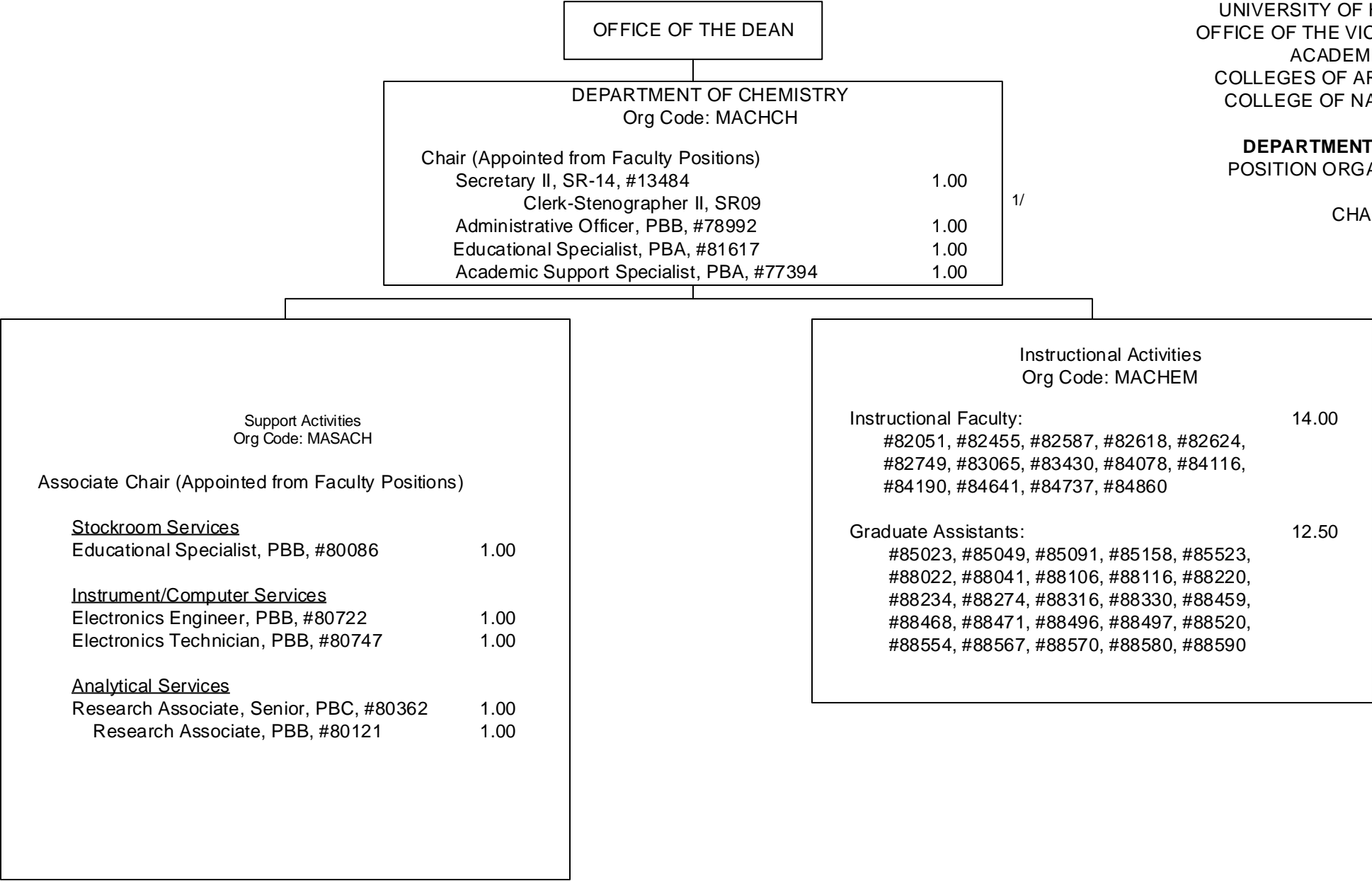
1/ Graduate Asst, #83828T, #83834T, #84249T, #84341T, #84453T, #86064T, #87056T are appropriated temporary positions.



STATE OF HAWAII
UNIVERSITY OF HAWAII
UNIVERSITY OF HAWAII AT MANOA
OFFICE OF THE VICE CHANCELLOR FOR
ACADEMIC AFFAIRS
COLLEGES OF ARTS AND SCIENCES
COLLEGE OF NATURAL SCIENCES

DEPARTMENT OF CHEMISTRY
POSITION ORGANIZATION CHART

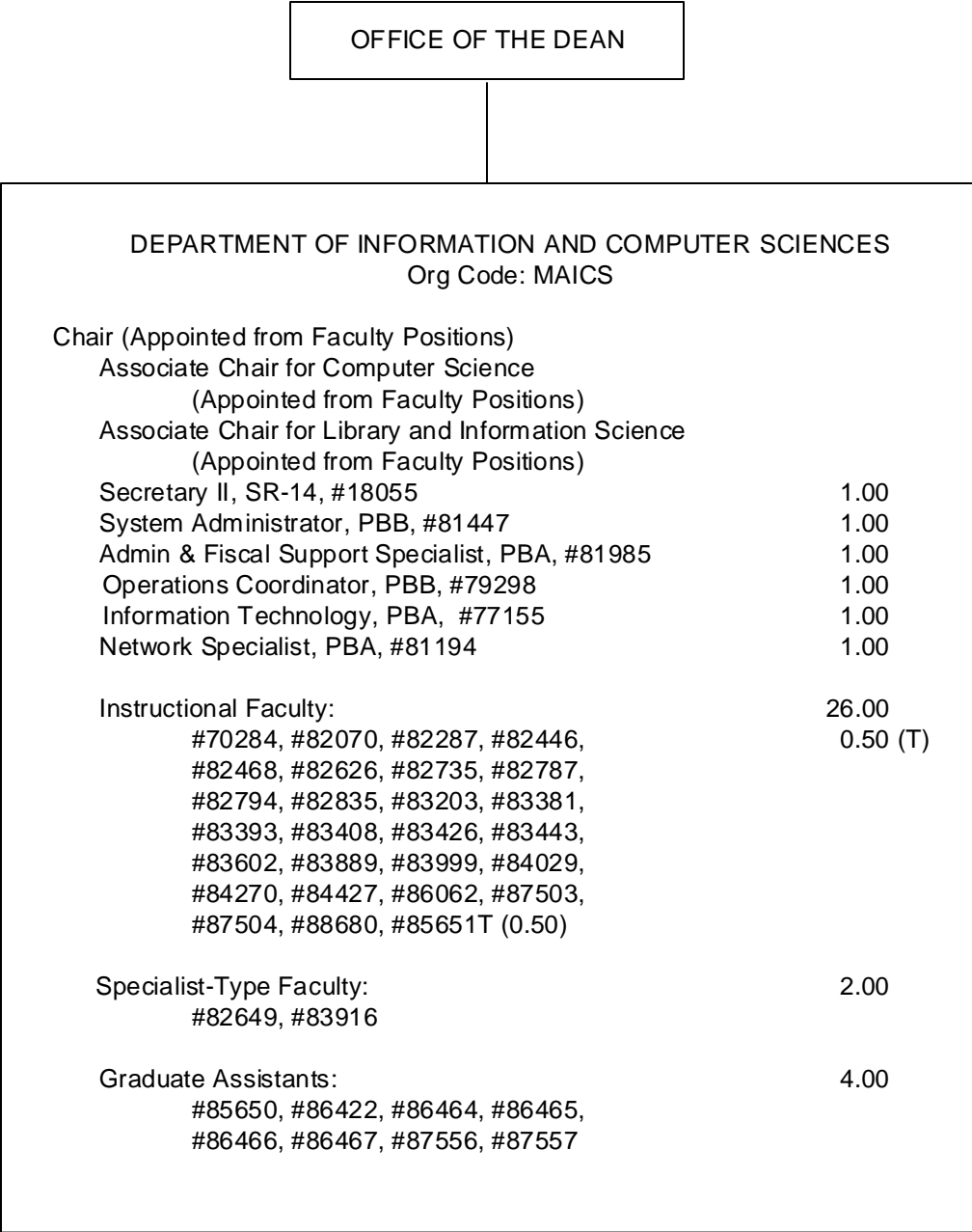
CHART II-C



1/ Clerk Steno II in Department of Chemistry abolished, pending re-establishment.

DEPARTMENT OF INFORMATION
AND COMPUTER SCIENCES
POSITION ORGANIZATION CHART

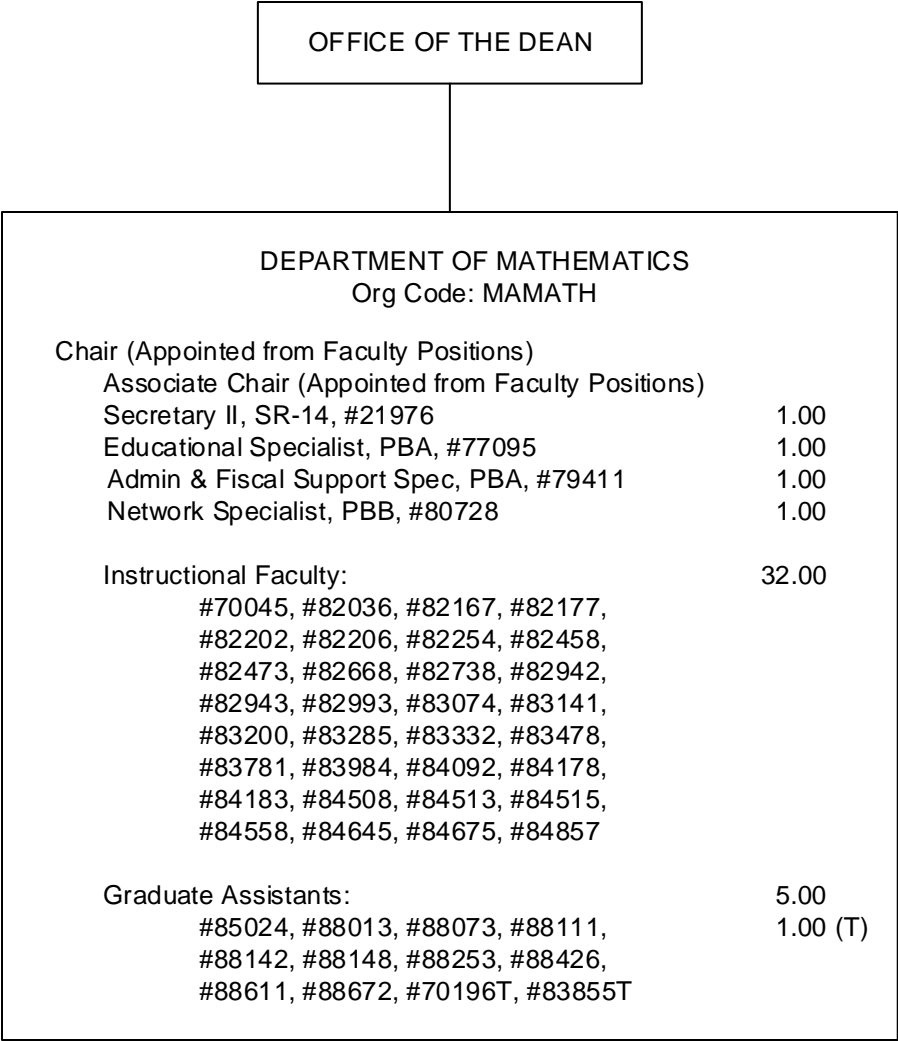
CHART II-D



1/ Instructional Faculty, #85651T is an appropriated temporary position.

DEPARTMENT OF MATHEMATICS
POSITION ORGANIZATION CHART

CHART II-E



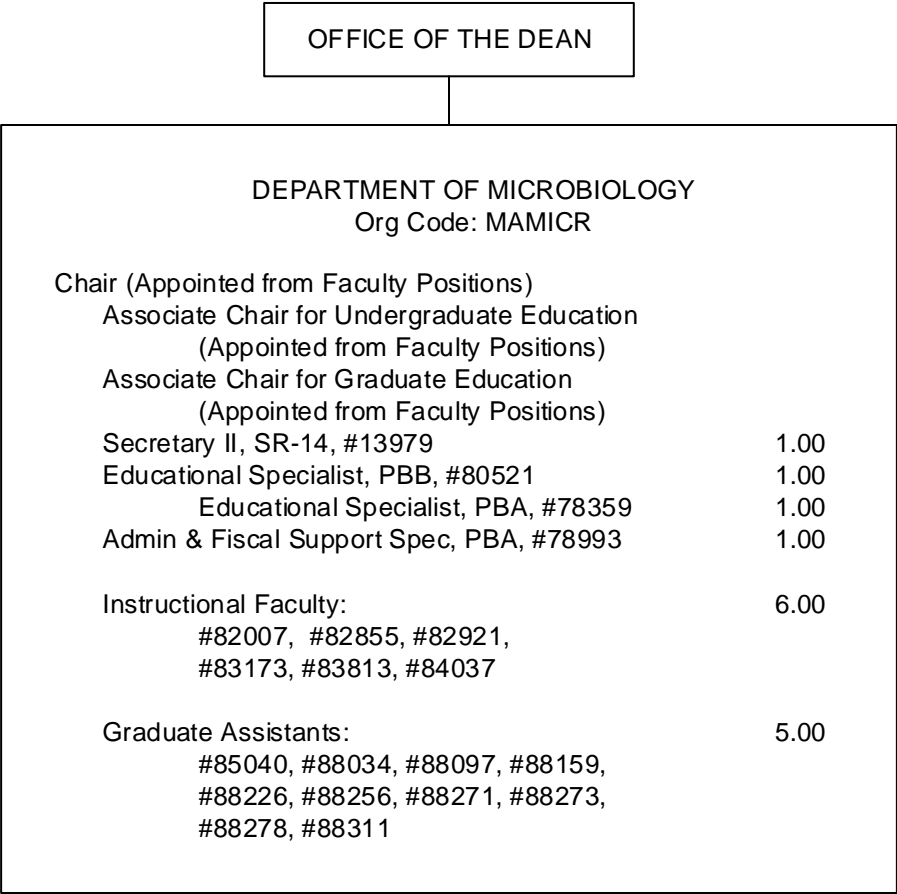


CHART II-F

DEPARTMENT OF PHYSICS AND ASTRONOMY
POSITION ORGANIZATION CHART

CHART II-G

