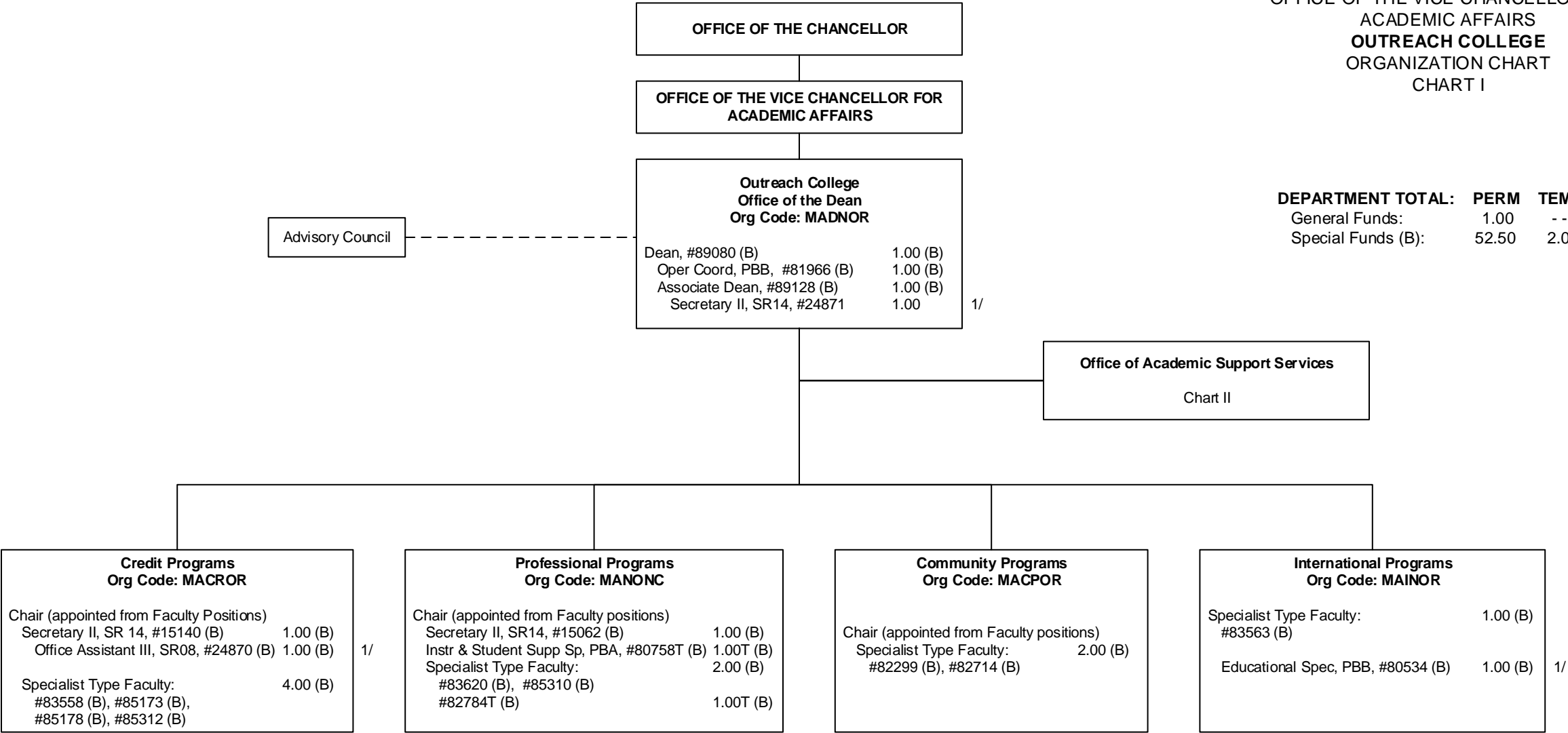


STATE OF HAWAI'I
UNIVERSITY OF HAWAI'I
UNIVERSITY OF HAWAI'I AT MĀNOA
OFFICE OF THE VICE CHANCELLOR FOR
ACADEMIC AFFAIRS
OUTREACH COLLEGE
ORGANIZATION CHART
CHART I



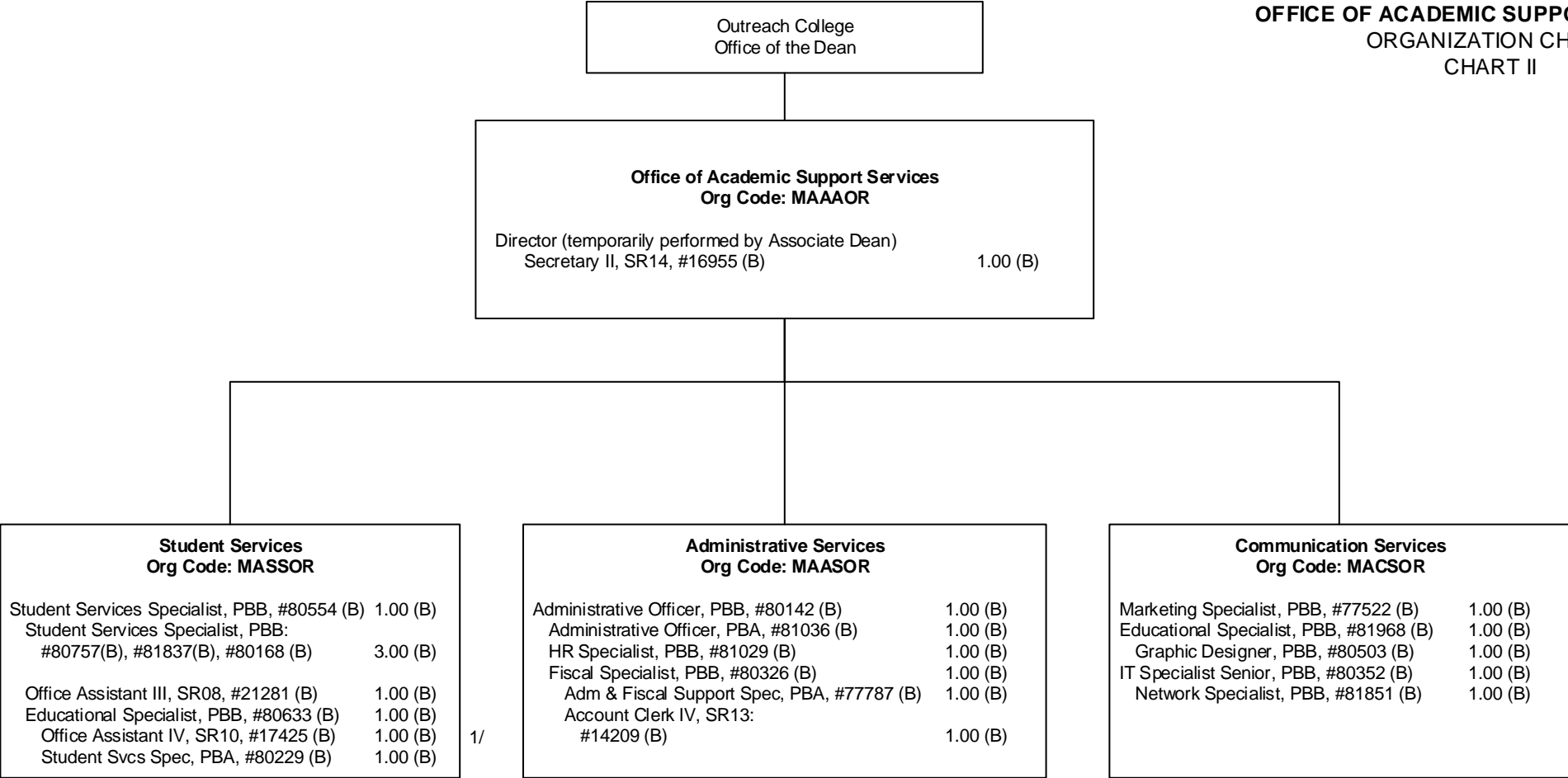
DEPARTMENT TOTAL:	PERM	TEMP
General Funds:	1.00	- -
Special Funds (B):	52.50	2.00

1/ Secretary II, Office Assistant III and Educ Spec abolished, pending establishment.

Reallocated positions pending establishment 12.00 (B) FTE: 12454 (B), 85311 (B), 89066 (B), 94025F (B), 94527F (B), 99034F (0.50) (B) – 99047F (0.50) (B)

Abolished special fund positions: 10110 (B), 13854 (B), 21626 (B), 39572 (B), 42936 (0.50) (B)

CHART TOTAL:	PERM	TEMP
General Funds:	1.00	- -
Special Funds (B):	32.50	2.00



1/ Office Assistant IV abolished, pending establishment.