

DEPARTMENT TOTAL:	PERM	TEMP
General Funds:	238.25	4.25

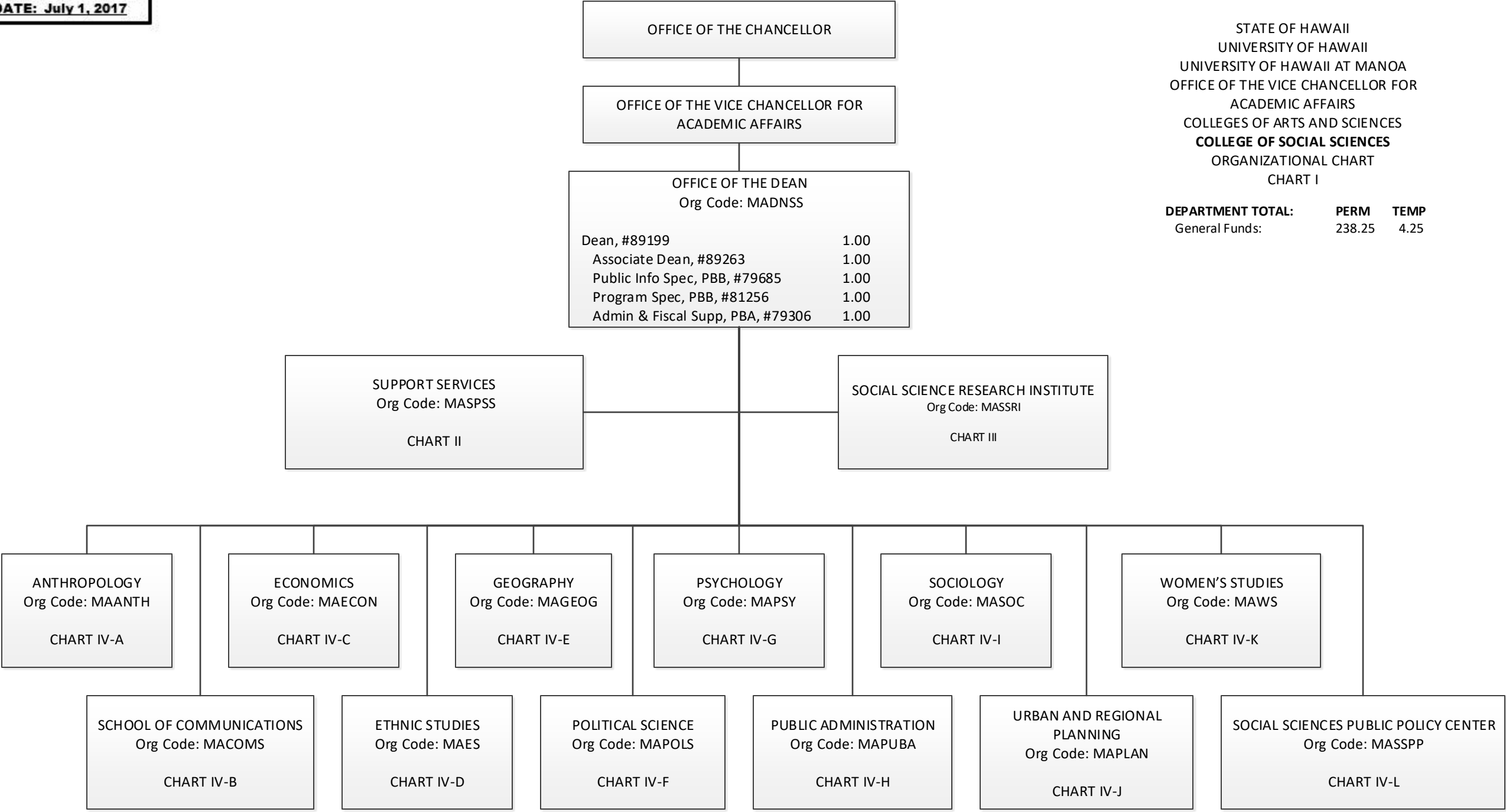


CHART TOTAL:	PERM	TEMP
General Funds:	5.00	--



OFFICE OF THE DEAN

SOCIAL SCIENCE RESEARCH INSTITUTE

OFFICE OF THE DIRECTOR

Org Code: MASSRI

Director, #862261.00

Specialist Type Faculty:

#88743, #88751 (0.75)1.75

Adm & Fiscal Support Sp, PBA, #800871.00

#80819T (0.25)0.25T

1/

FISCAL SERVICES

Org Code: MAASRI

Administrative Officer, PBB3.00

#77767, #80107, #81943

Admin & Fiscal Support Sp, PBA, #774651.00

ECONOMIC RESEARCH ORGANIZATION

Org Code: MARSRI

Instr Type Faculty, #84797 (0.50)0.50

Instr Type Faculty, #848711.00

Specialist Type Faculty:

#84643, #84870, #88744 (0.50)2.50

#88133T(0.50)0.50T

IT Specialist, PBB, #795471.00

CENTER FOR ORAL HISTORY

Org Code: MAOHRI

Ed Specialist, PBB, #808131.00

Research Assoc, PBB, #809351.00

Research Assoc, PBA, #77024 (0.50)0.50

CENTER FOR YOUTH RESEARCH

Org Code: MAYRRI

Instr Type Faculty, #84797 (0.50)0.50

Ed Specialist, PBB, #805311.00

TELECOMMUNICATIONS AND SOCIAL INFORMATICS (TASI)

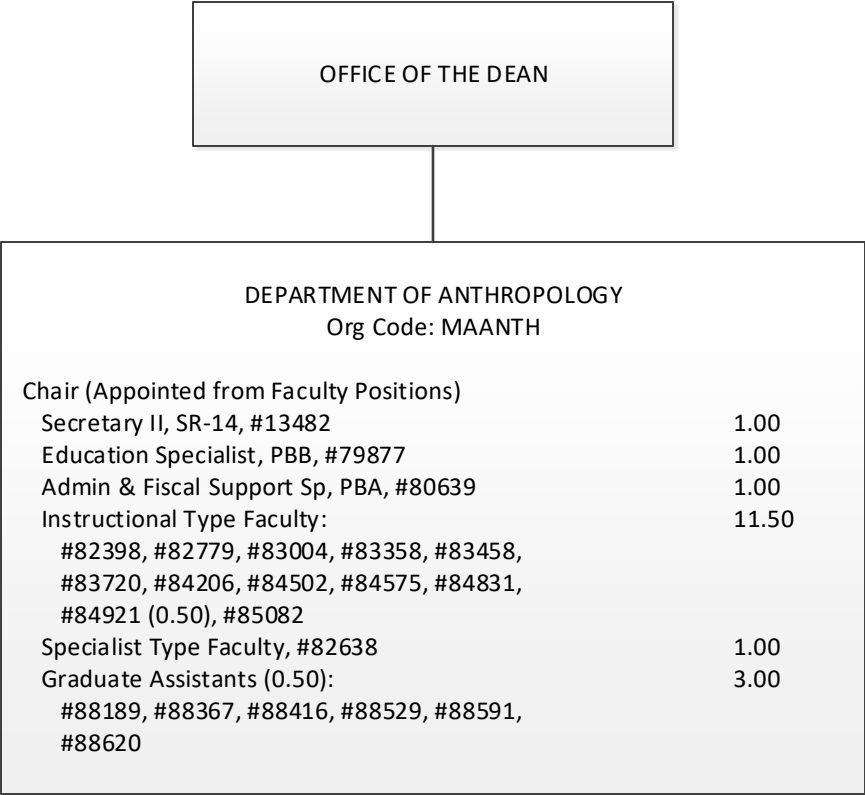
RESEARCH PROGRAM / PACIFIC HEALTH INFORMATICS AND

DATA CENTER (PHIDC)

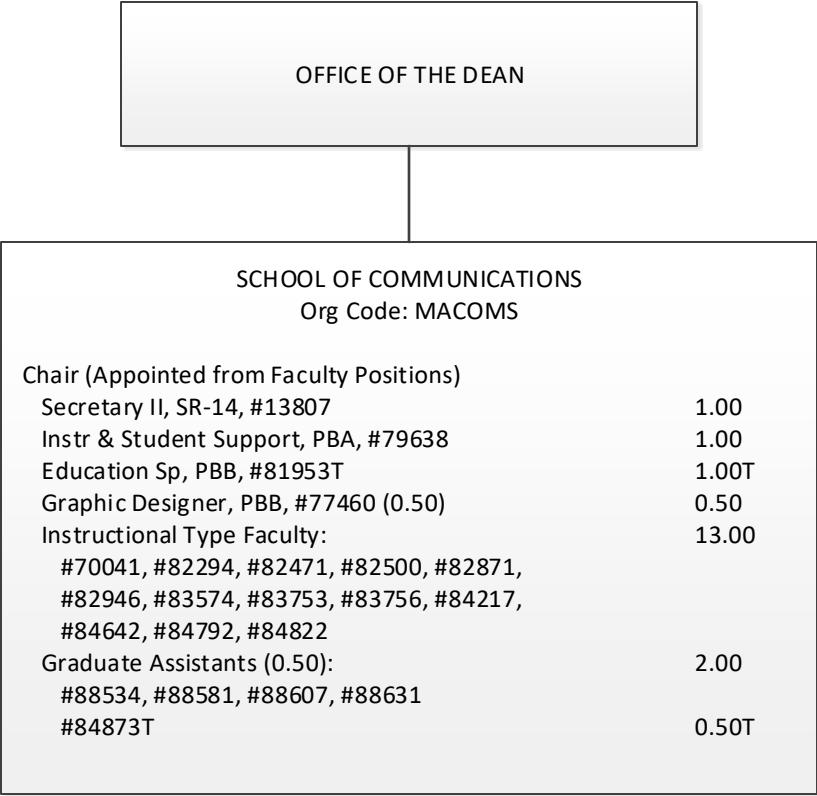
Org Code: MAPSAT

Specialist Type Faculty, #83924, #862252.00

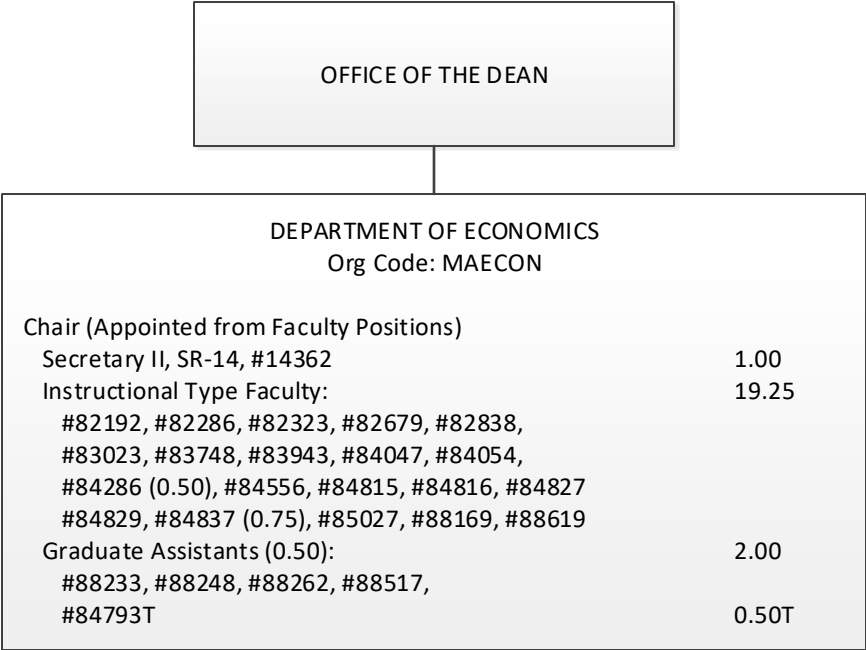
1/ #80819T abolished, to be established

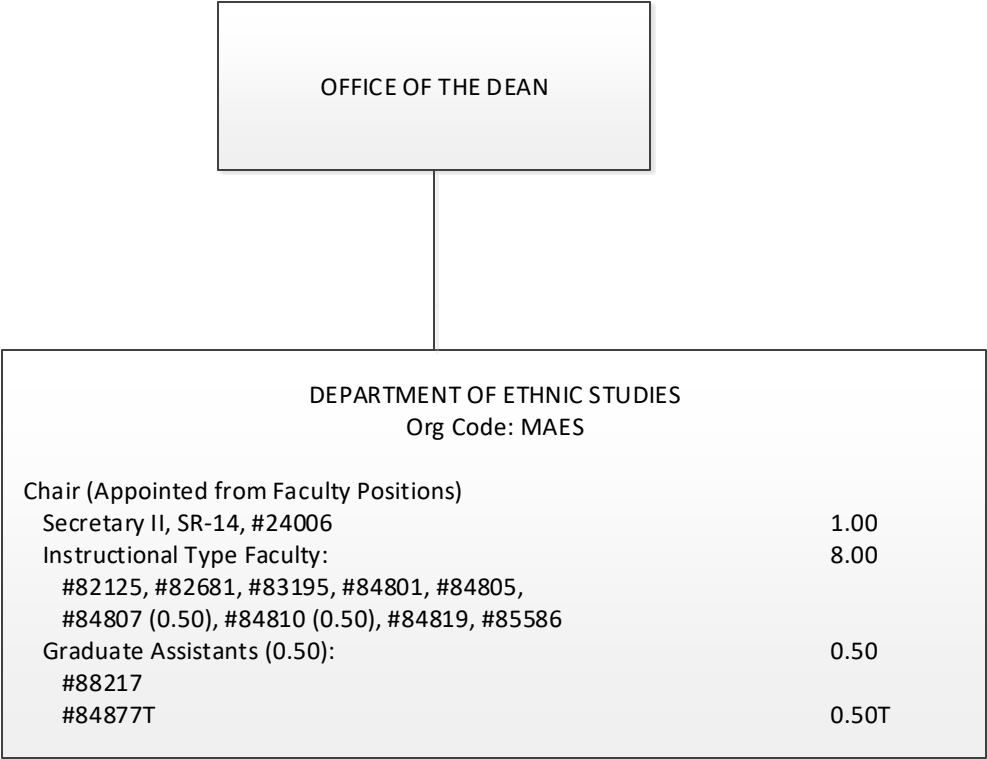


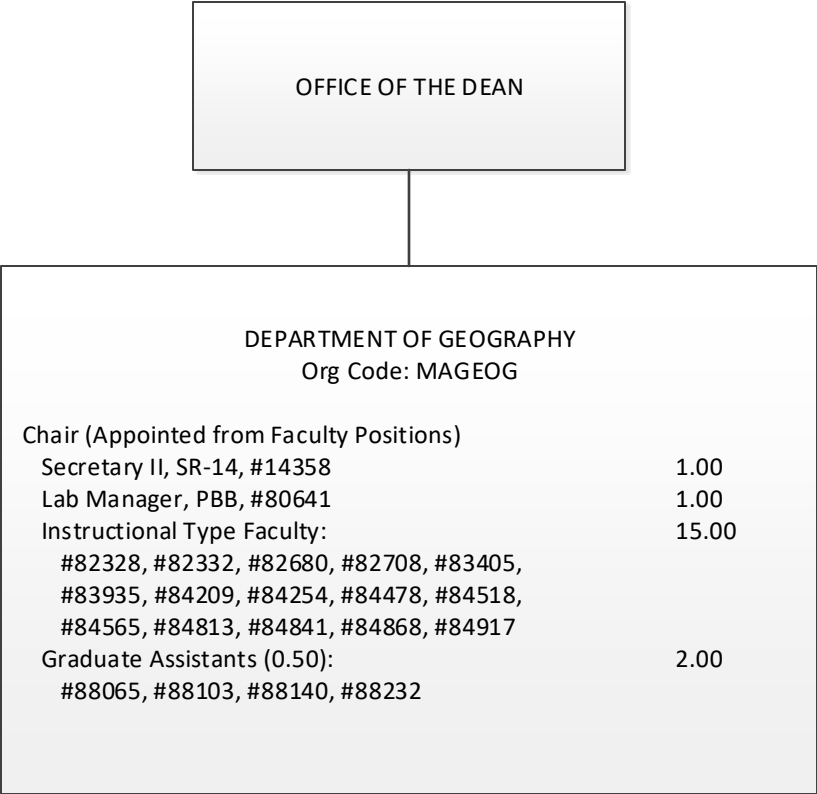
STATE OF HAWAII
UNIVERSITY OF HAWAII
UNIVERSITY OF HAWAII AT MANOA
OFFICE OF THE VICE CHANCELLOR FOR
ACADEMIC AFFAIRS
COLLEGES OF ARTS AND SCIENCES
COLLEGE OF SOCIAL SCIENCES
DEPARTMENT OF ANTHROPOLOGY
ORGANIZATIONAL CHART
CHART IV-A

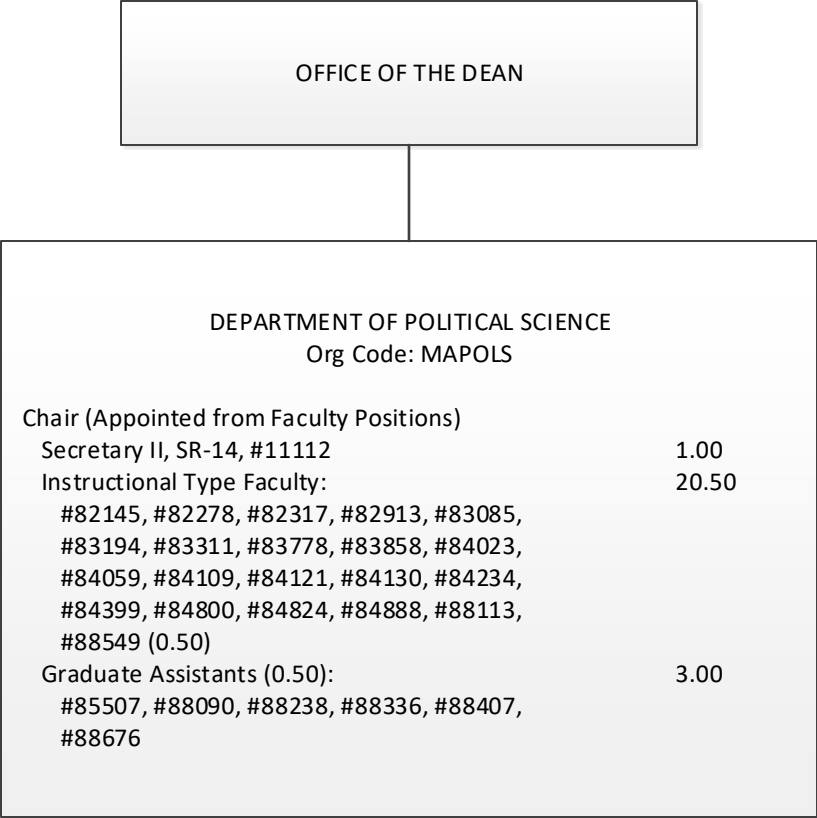


STATE OF HAWAII
UNIVERSITY OF HAWAII
UNIVERSITY OF HAWAII AT MANOA
OFFICE OF THE VICE CHANCELLOR FOR
ACADEMIC AFFAIRS
COLLEGES OF ARTS AND SCIENCES
COLLEGE OF SOCIAL SCIENCES
SCHOOL OF COMMUNICATIONS
ORGANIZATIONAL CHART
CHART IV-B

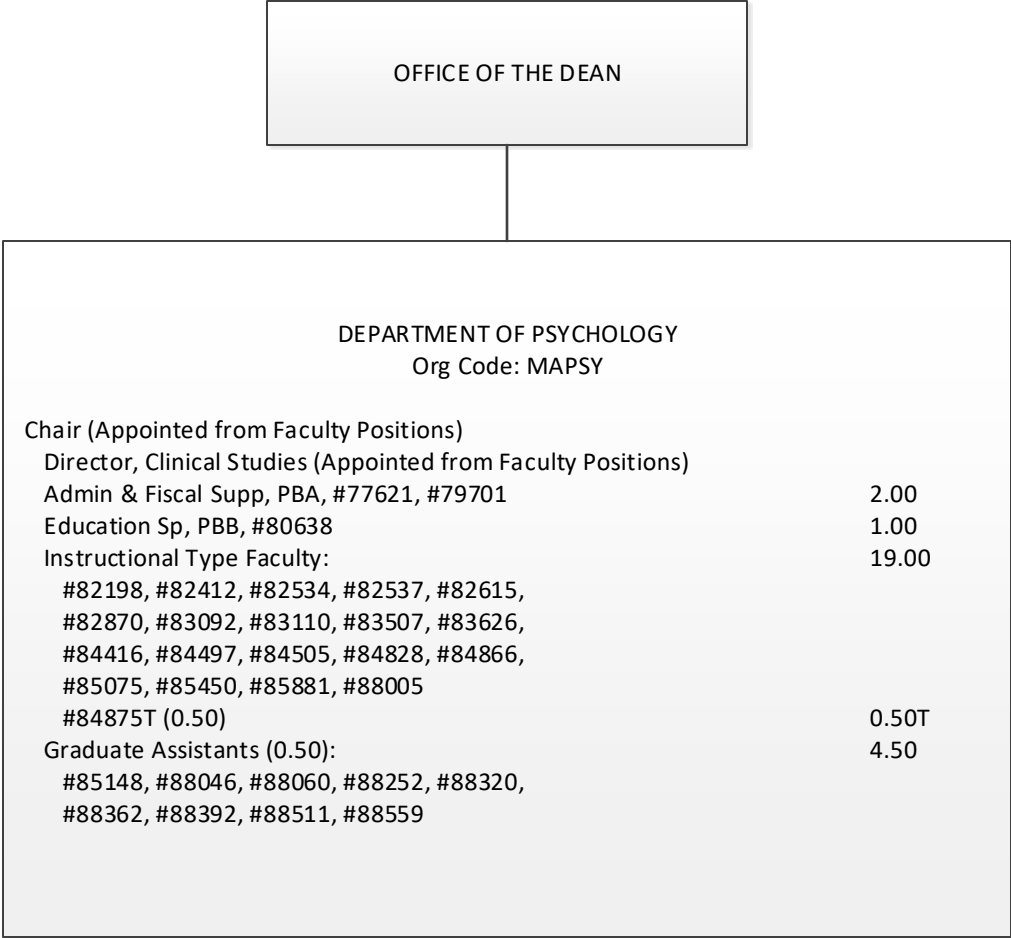


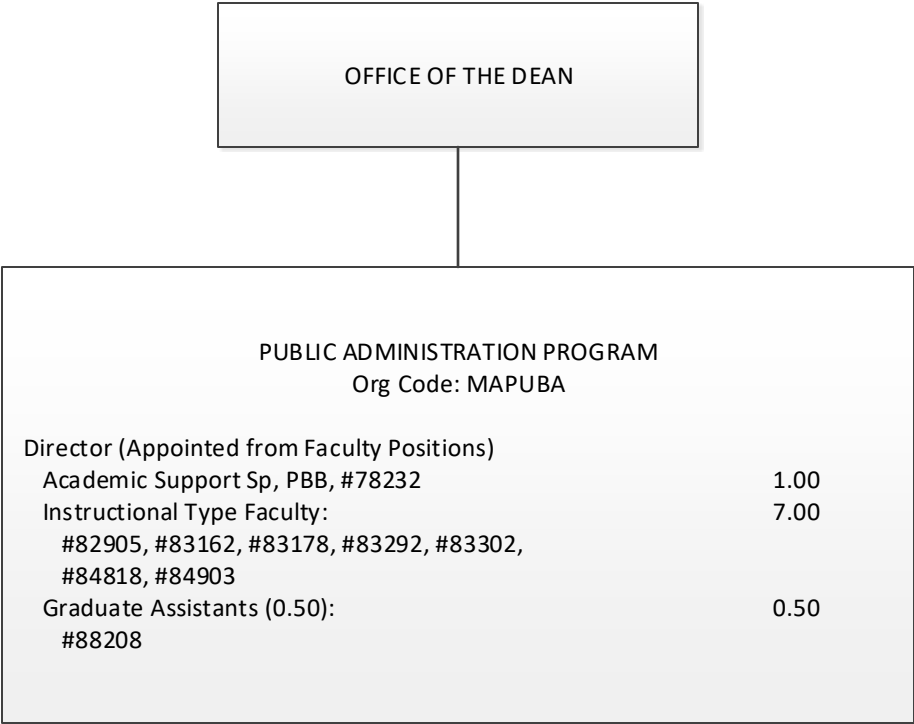


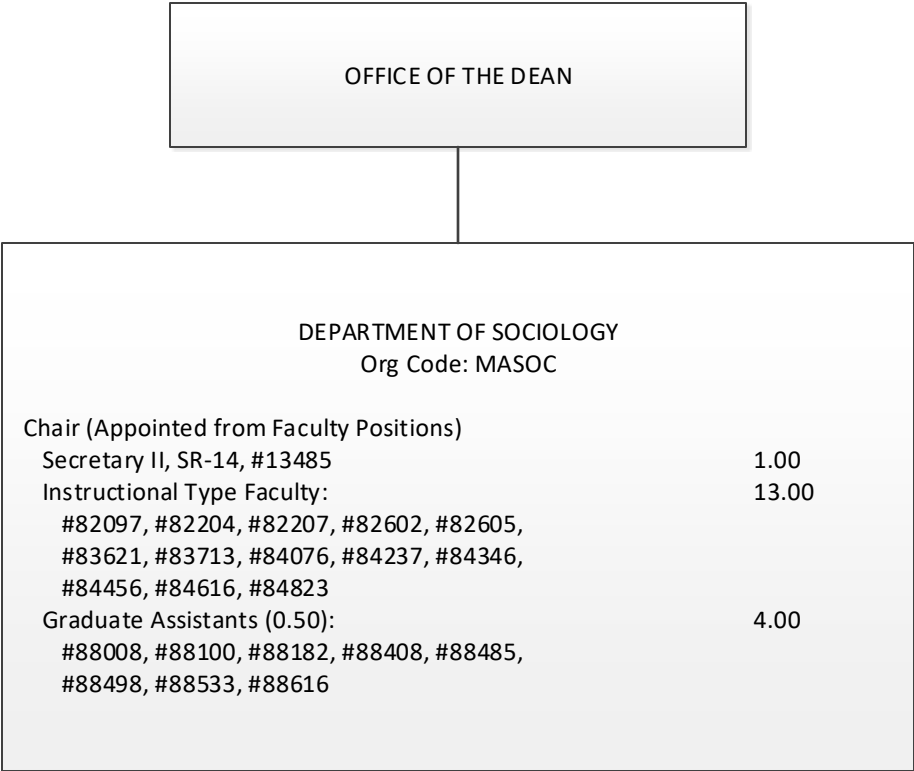




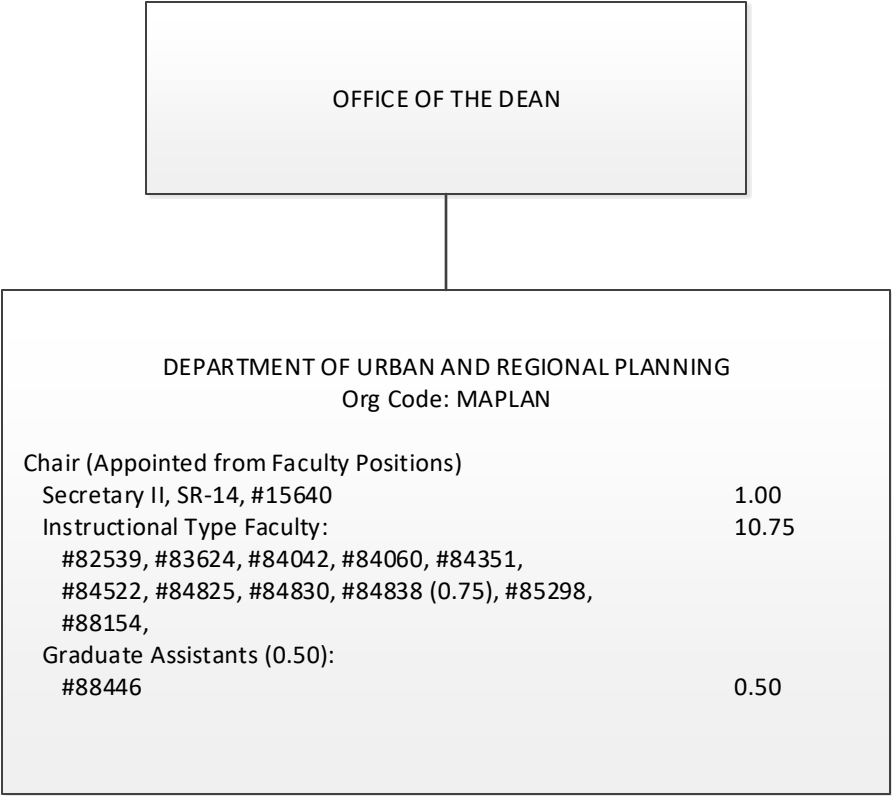
STATE OF HAWAII
UNIVERSITY OF HAWAII
UNIVERSITY OF HAWAII AT MANOA
OFFICE OF THE VICE CHANCELLOR FOR
ACADEMIC AFFAIRS
COLLEGES OF ARTS AND SCIENCES
COLLEGE OF SOCIAL SCIENCES
DEPARTMENT OF POLITICAL SCIENCE
ORGANIZATIONAL CHART
CHART IV-F







STATE OF HAWAII
UNIVERSITY OF HAWAII
UNIVERSITY OF HAWAII AT MANOA
OFFICE OF THE VICE CHANCELLOR FOR
ACADEMIC AFFAIRS
COLLEGES OF ARTS AND SCIENCES
COLLEGE OF SOCIAL SCIENCES
DEPARTMENT OF URBAN AND REGIONAL PLANNING
ORGANIZATIONAL CHART
CHART IV-J



STATE OF HAWAII
UNIVERSITY OF HAWAII
UNIVERSITY OF HAWAII AT MANOA
OFFICE OF THE VICE CHANCELLOR FOR
ACADEMIC AFFAIRS
COLLEGES OF ARTS AND SCIENCES
COLLEGE OF SOCIAL SCIENCES
DEPARTMENT OF WOMEN’S STUDIES
ORGANIZATIONAL CHART
CHART IV-K

