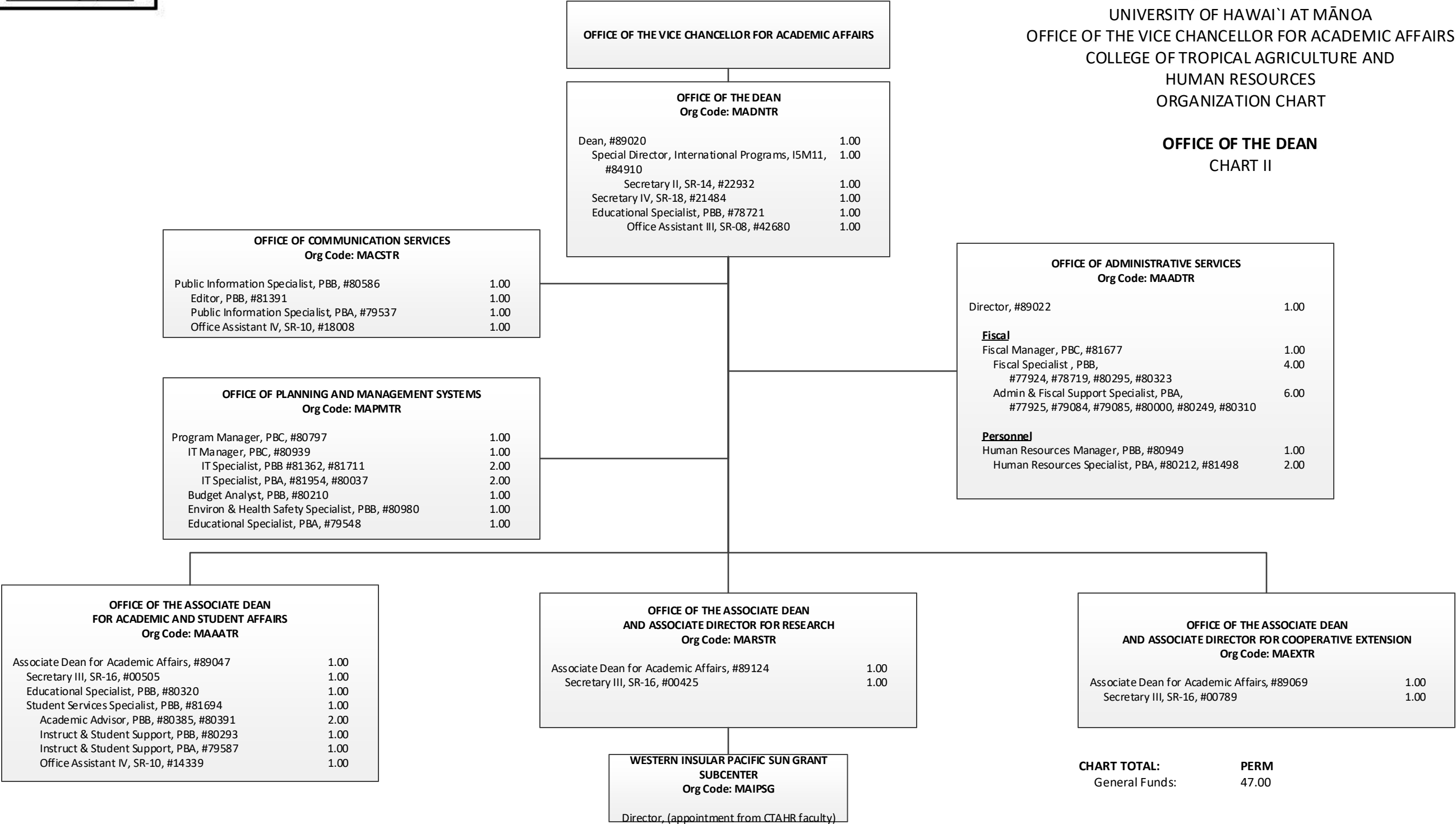


STATE OF HAWAI'I  
UNIVERSITY OF HAWAI'I  
UNIVERSITY OF HAWAI'I AT MĀNOA  
OFFICE OF THE VICE CHANCELLOR FOR ACADEMIC AFFAIRS  
COLLEGE OF TROPICAL AGRICULTURE AND  
HUMAN RESOURCES  
ORGANIZATION CHART

OFFICE OF THE DEAN  
CHART II



STATE OF HAWAI`I  
UNIVERSITY OF HAWAI`I  
UNIVERSITY OF HAWAI`I AT MĀNOA  
OFFICE OF THE VICE CHANCELLOR FOR ACADEMIC AFFAIRS  
COLLEGE OF TROPICAL AGRICULTURE AND  
HUMAN RESOURCES  
ORGANIZATION CHART

DEPARTMENT OF FAMILY AND CONSUMER SCIENCES  
CHART III

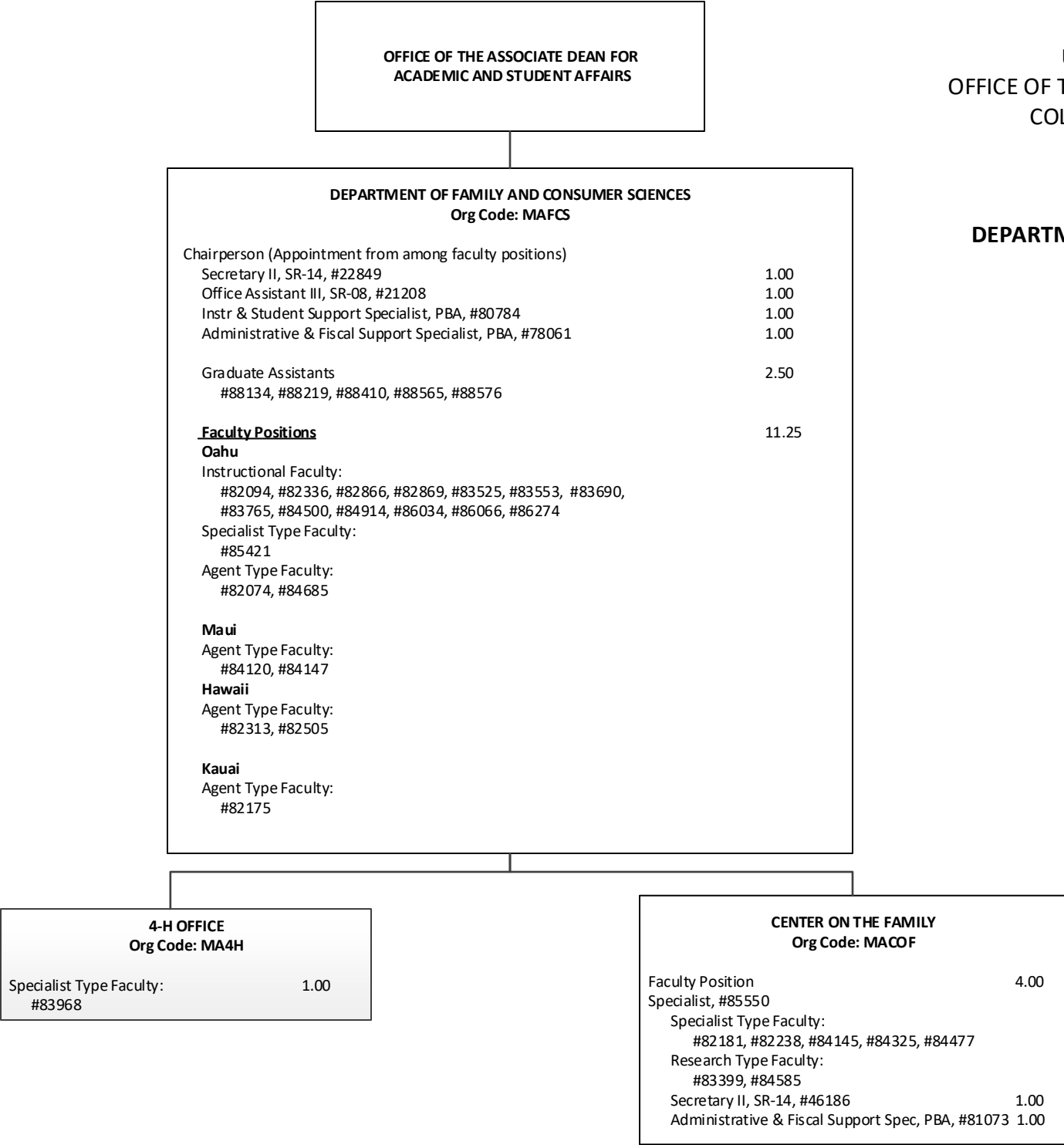


CHART TOTAL:	PERM	TEMP
General Funds:	24.75	--

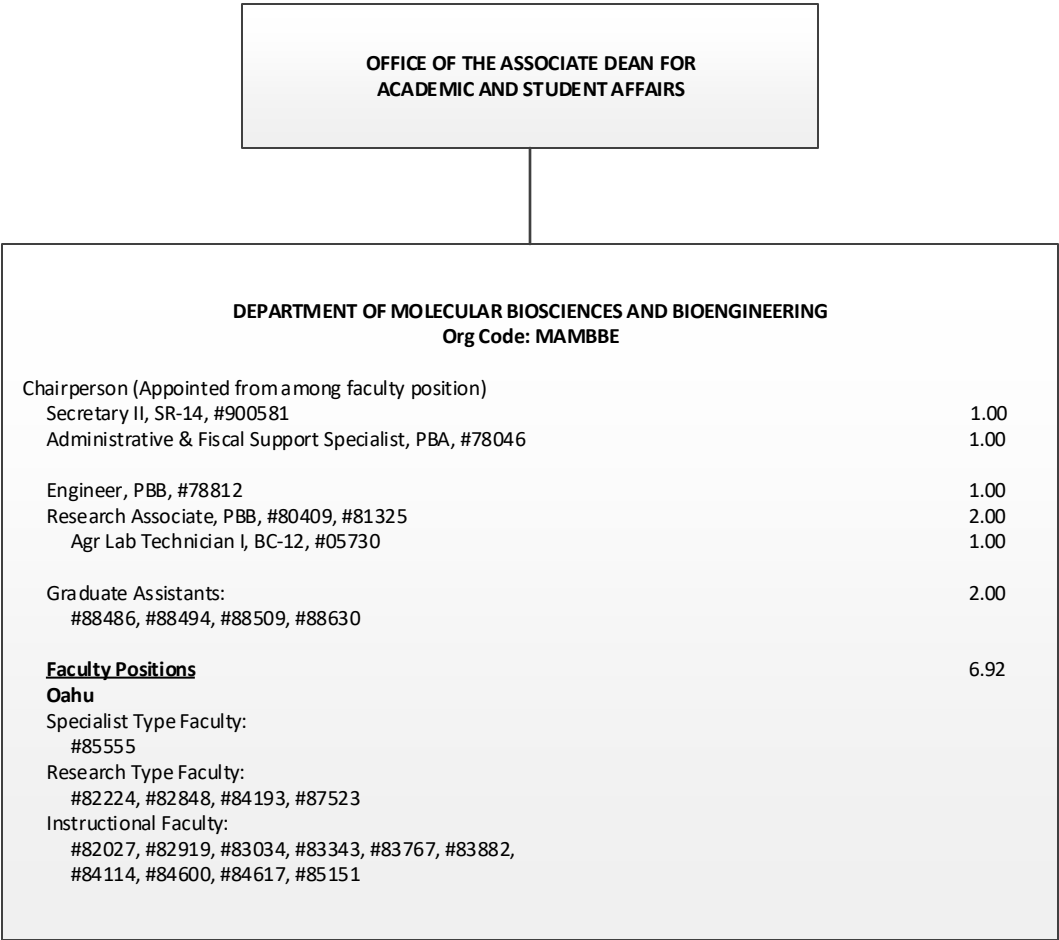
OFFICE OF THE ASSOCIATE DEAN FOR  
ACADEMIC AND STUDENT AFFAIRS

STATE OF HAWAI`I  
UNIVERSITY OF HAWAI`I  
UNIVERSITY OF HAWAI`I AT MĀNOA  
OFFICE OF THE VICE CHANCELLOR FOR ACADEMIC AFFAIRS  
COLLEGE OF TROPICAL AGRICULTURE AND  
HUMAN RESOURCES  
ORGANIZATION CHART

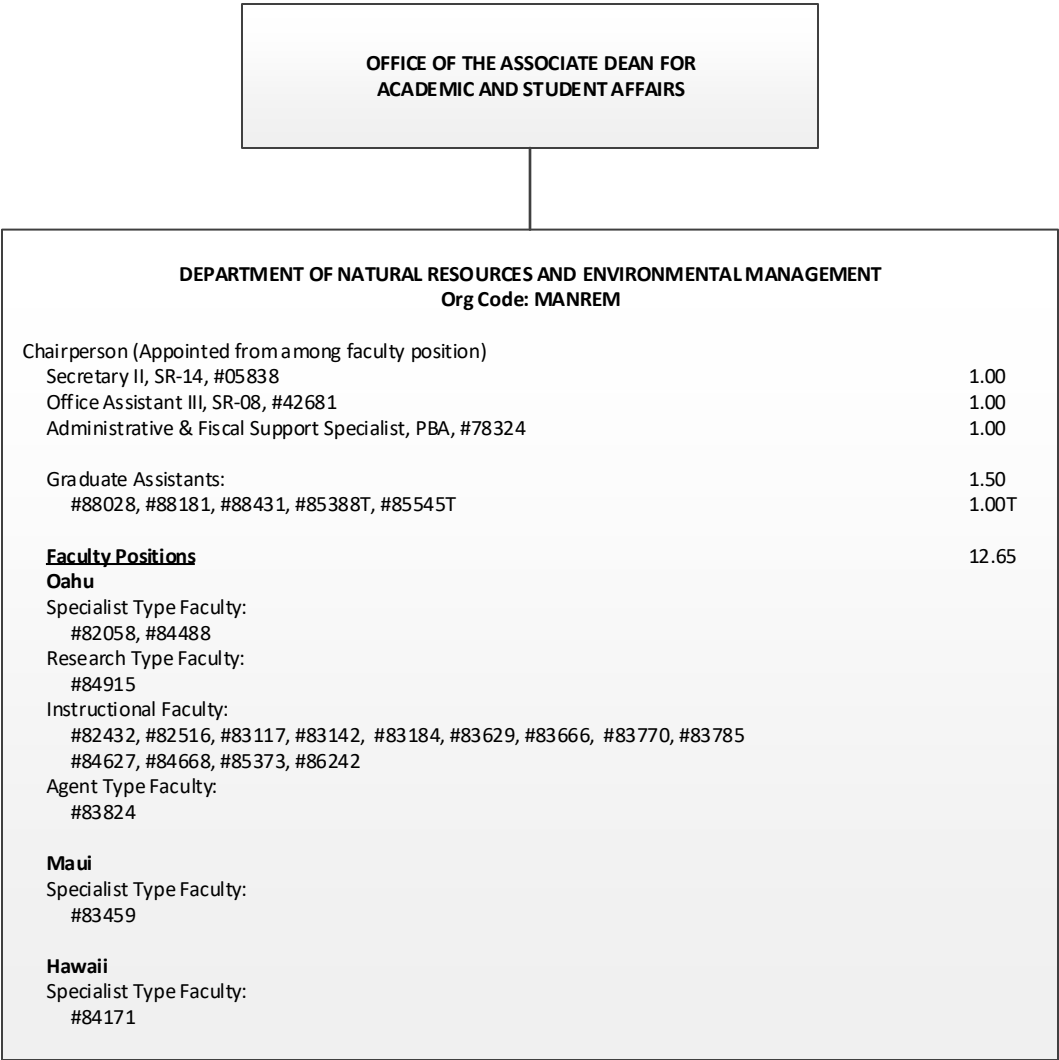
DEPARTMENT OF HUMAN NUTRITION, FOOD AND  
ANIMAL SCIENCES  
CHART IV

DEPARTMENT OF HUMAN NUTRITION, FOOD AND ANIMAL SCIENCES		
Org Code: MAHFAS		
Chairperson (Appointed from among faculty position)		
Secretary II, SR-14, #00400		1.00
Office Assistant III, SR-08, #900569		1.00
Administrative & Fiscal Support Specialist, PBA, #80386		1.00
Research Associate, PBB, #80410		1.00
Research Associate, PBA, #77092		1.00
Graduate Assistants		2.50
#88088, #88165, #88303, #88594, #88643		
<b>Faculty Positions</b>		16.15
<b>Oahu</b>		
Specialist Type Faculty:		
#82107, #83017, #83510, #83830, #84323, #84640		
Research Type Faculty:		
#82945, #83633, #84227, #84454, #84496, #85576		
Instructional Faculty:		
#82248, #82856, #82865, #83012, #83267, #83811, #84306, #84449,		
#84512, #84919, #84920, #85556, #87552		
Agent Type Faculty:		
#84439		
<b>Maui</b>		
Agent Type Faculty:		
#82639, #83728		
<b>Hawaii</b>		
Specialist Type Faculty:		
#82090		
Agent Type Faculty:		
#84158, #84276, #84297		
<b>Kauai</b>		
Agent Type Faculty:		
#82363		

DEPARTMENT OF MOLECULAR BIOSCIENCES AND  
BIOENGINEERING  
CHART V



DEPARTMENT OF NATURAL RESOURCES AND  
ENVIRONMENTAL MANAGEMENT  
CHART VI



OFFICE OF THE ASSOCIATE DEAN FOR ACADEMIC AND STUDENT AFFAIRS		
DEPARTMENT OF PLANT AND ENVIRONMENTAL PROTECTION SCIENCES Org Code: MAPEPS		
Chairperson (Appointed from among faculty position)		
Secretary II, SR-14, #07477		1.00
Office Assistant III, SR-08, #00794, #15509		2.00
Administrative & Fiscal Support Specialist, PBA, #77864		1.00
Educational Specialist, PBB, #80250		1.00
Research Associate, PBB, #80388, #81178, #81311		3.00
Research Associate, PBA, #81313		1.00
Agr Research Technician V, SR-16, #00442		1.00
Agr Research Technician IV, SR-14, #24270		1.00
Agr Research Technician III, SR-11, #24269		1.00
Graduate Assistants: #84932, #88241		1.00
<u>Faculty Positions</u>		10.91
Oahu		
Specialist Type Faculty: #83320, #83513, #84006, #84321, #84911		
Research Type Faculty: #82047, #82139, #83067, #83260, #83742 #83884, #84041, #84316, #85547		
Instructional Faculty: #82976, #84138, #85510		
Agent Type Faculty: #84489		
Maui		
Agent Type Faculty: #85530		
Hawaii		
Agent Type Faculty: #82196, #83462, #85538		
Kauai		
Instructional Type Faculty: #85505		
Agent Type Faculty: #83816, #85410		

DEPARTMENT OF PLANT AND ENVIRONMENTAL  
PROTECTION SCIENCES  
CHART VII

OFFICE OF THE ASSOCIATE DEAN FOR  
ACADEMIC AND STUDENT AFFAIRS

STATE OF HAWAI`I  
UNIVERSITY OF HAWAI`I  
UNIVERSITY OF HAWAI`I AT MĀNOA  
OFFICE OF THE VICE CHANCELLOR FOR ACADEMIC AFFAIRS  
COLLEGE OF TROPICAL AGRICULTURE AND  
HUMAN RESOURCES  
ORGANIZATION CHART

DEPARTMENT OF TROPICAL PLANT AND SOIL SCIENCES		
Org Code: MATPSS		
Chairperson (Appointed from among faculty position)		
Secretary II, SR-14, #00793		1.00
Office Assistant IV, SR-10, #00399		1.00
Administrative & Fiscal Support Specialist, PBA, #77795		1.00
Research Associate, PBB, #80270		1.00
Agr Research Technician V, SR-16, #11019		1.00
Agr Research Technician IV, SR-14, #00397, #05392, #15512		3.00
Graduate Assistants: #88171, #88423		1.00
<b>Faculty Positions</b>		13.76
<b>Oahu</b>		
Specialist Type Faculty: #82598, #82985, #83159, #83304, #83388, #83682, #84501, #84916		
Research Type Faculty: #82023, #82464, #82699, #82747, #83515, #83740, #83938, #84420, #84481, #85877, #86275		
Instructional Type Faculty: #83286		
Agent Type Faculty: #82881, #84070, #85435		
<b>Maui</b>		
Agent Type Faculty: #83848, #84075, #85477, #87584, #85459		
<b>Hawaii</b>		
Research Type Faculty: #84067, #84354		
Agent Type Faculty: #82485, #82758, #82951, #84648, #85440		

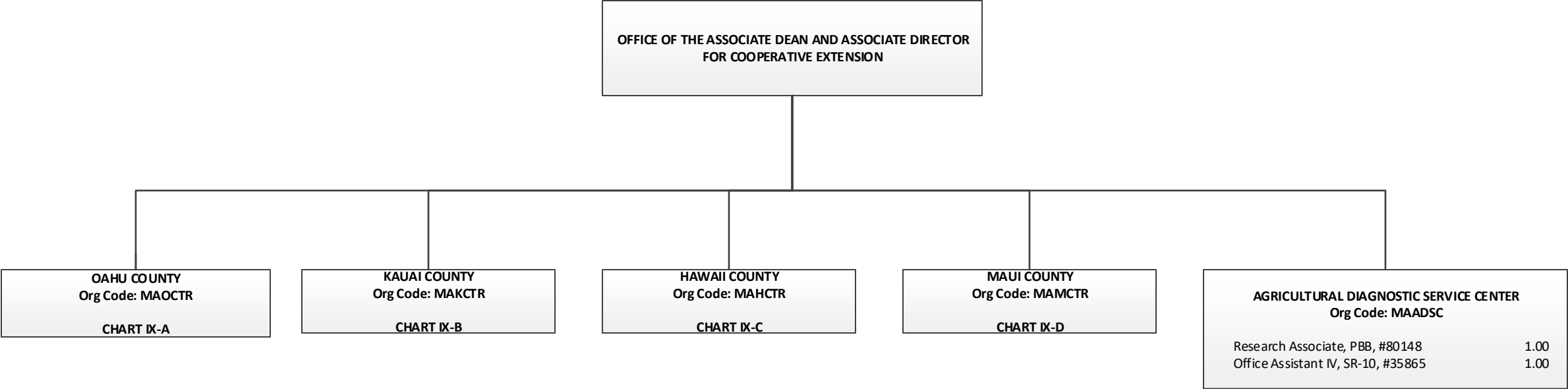
DEPARTMENT OF TROPICAL PLANT AND SOIL SCIENCES  
CHART VIII

CHART TOTAL:	PERM	TEMP
General Funds:	22.76	--



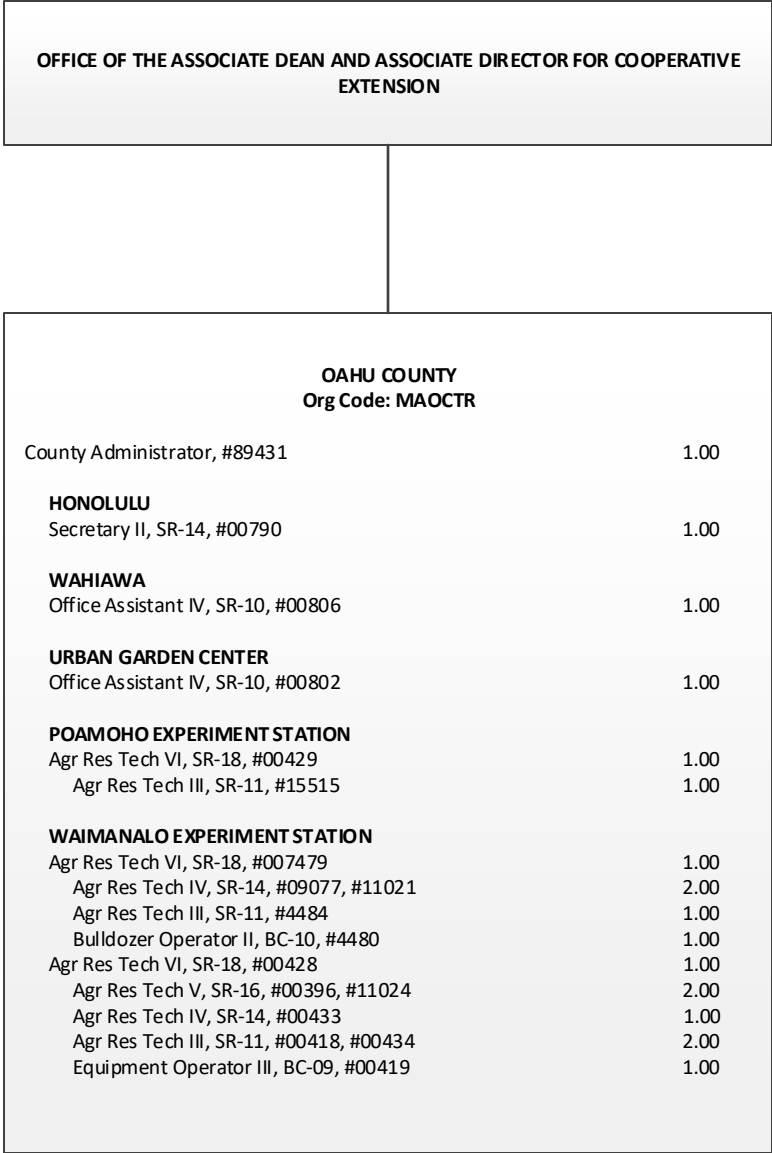
STATE OF HAWAIʻI  
UNIVERSITY OF HAWAIʻI  
UNIVERSITY OF HAWAIʻI AT MĀNOA  
OFFICE OF THE VICE CHANCELLOR FOR ACADEMIC AFFAIRS  
COLLEGE OF TROPICAL AGRICULTURE AND  
HUMAN RESOURCES  
ORGANIZATION CHART

COUNTY ADMINISTRATION  
CHART IX



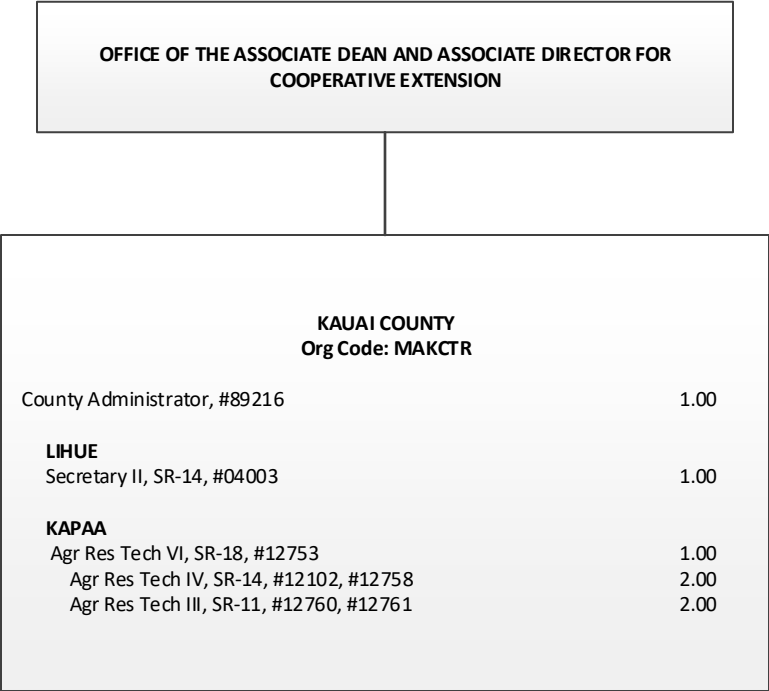
STATE OF HAWAI`I  
UNIVERSITY OF HAWAI`I  
UNIVERSITY OF HAWAI`I AT MĀNOA  
OFFICE OF THE VICE CHANCELLOR FOR ACADEMIC AFFAIRS  
COLLEGE OF TROPICAL AGRICULTURE AND  
HUMAN RESOURCES  
ORGANIZATION CHART

OAHU COUNTY  
CHART IX-A



STATE OF HAWAI`I  
UNIVERSITY OF HAWAI`I  
UNIVERSITY OF HAWAI`I AT MĀNOA  
OFFICE OF THE VICE CHANCELLOR FOR ACADEMIC AFFAIRS  
COLLEGE OF TROPICAL AGRICULTURE AND  
HUMAN RESOURCES  
ORGANIZATION CHART

KAUAI COUNTY  
CHART IX-B



OFFICE OF THE ASSOCIATE DEAN AND ASSOCIATE DIRECTOR FOR COOPERATIVE  
EXTENSION

STATE OF HAWAI`I  
UNIVERSITY OF HAWAI`I  
UNIVERSITY OF HAWAI`I AT MĀNOA  
OFFICE OF THE VICE CHANCELLOR FOR ACADEMIC AFFAIRS  
COLLEGE OF TROPICAL AGRICULTURE AND  
HUMAN RESOURCES  
ORGANIZATION CHART

HAWAII COUNTY  
CHART IX-C

HAWAII COUNTY  
Org Code: MAHCTR

County Administrator, #89213	1.00
<b>KOMOHANA</b>	
Secretary II, SR-14, #13871	1.00
Office Assistant III, SR-08, #00791	1.00
<b>KONA</b>	
Office Assistant IV, SR-10, #900583	1.00
<b>KAMUELA</b>	
Office Assistant IV, SR-10, #00799	1.00

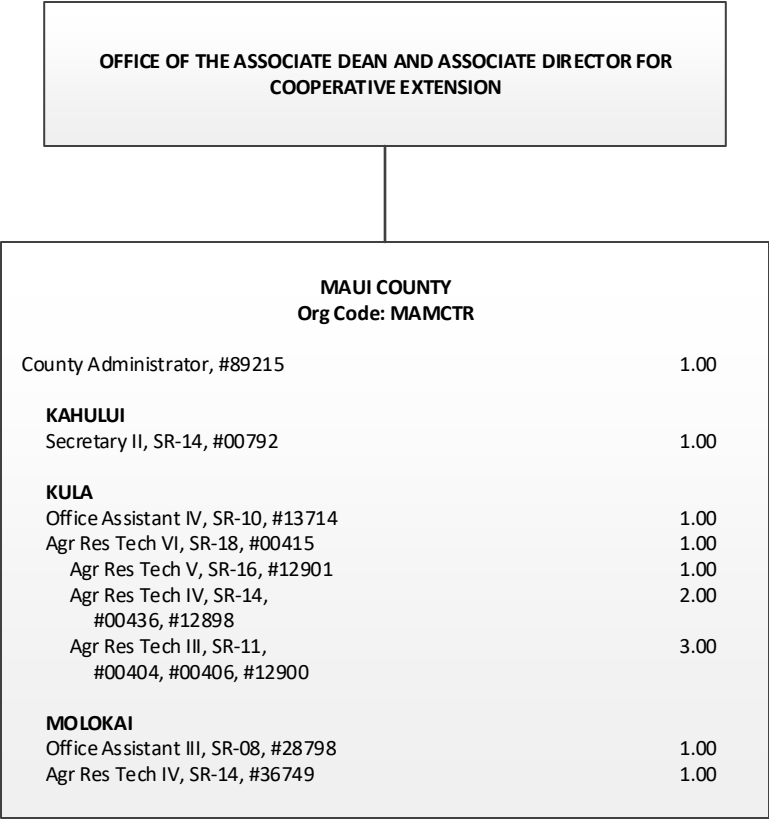
HAWAII COUNTY TECHNICAL SUPPORT  
Org Code: MAHTTR

Educational Specialist, PBB, #80311	1.00
<b>EAST HAWAII</b>	
Agr Res Tech VI, SR-18, #12099	1.00
<b>WAIAKEA</b>	
Agr Res Tech V, SR-16, #14166	1.00
Agr Res Tech IV, SR-14, #12096, #12098, #14168, #15497	4.00
Agr Res Tech III, SR-11, #17602	1.00
Building Maintenance Worker I, BC-09, #12095	1.00
<b>VOLCANO</b>	
Agr Res Tech V, SR-16, #13206	1.00
Agr Res Tech IV, SR-14, #12097	1.00
<b>MALAMA-KI</b>	
<b>WEST HAWAII</b>	
Agr Res Tech VI, SR-18, #13530	1.00
<b>MEALANI</b>	
Agr Res Tech V, SR-16, #12094	1.00
Agr Res Tech IV, SR-14, #12100	1.00
Agr Res Tech III, SR-11, #13205, #44867, #44868	3.00
<b>HAMAKUA</b>	
<b>KONA</b>	
Agr Res Tech V, SR-16, #00409	1.00
Agr Res Tech III, SR-11, #22912	1.00

CHART TOTAL:	PERM	TEMP
General Funds:	24.00	--

STATE OF HAWAI`I  
UNIVERSITY OF HAWAI`I  
UNIVERSITY OF HAWAI`I AT MĀNOA  
OFFICE OF THE VICE CHANCELLOR FOR ACADEMIC AFFAIRS  
COLLEGE OF TROPICAL AGRICULTURE AND  
HUMAN RESOURCES  
ORGANIZATION CHART

MAUI COUNTY  
CHART IX-D



1/

CHART TOTAL:	PERM	TEMP
General Funds:	13.00	--