

STATE OF HAWAI'I  
UNIVERSITY OF HAWAI'I  
UNIVERSITY OF HAWAI'I AT MĀNOA  
OFFICE OF THE VICE CHANCELLOR  
FOR ACADEMIC AFFAIRS

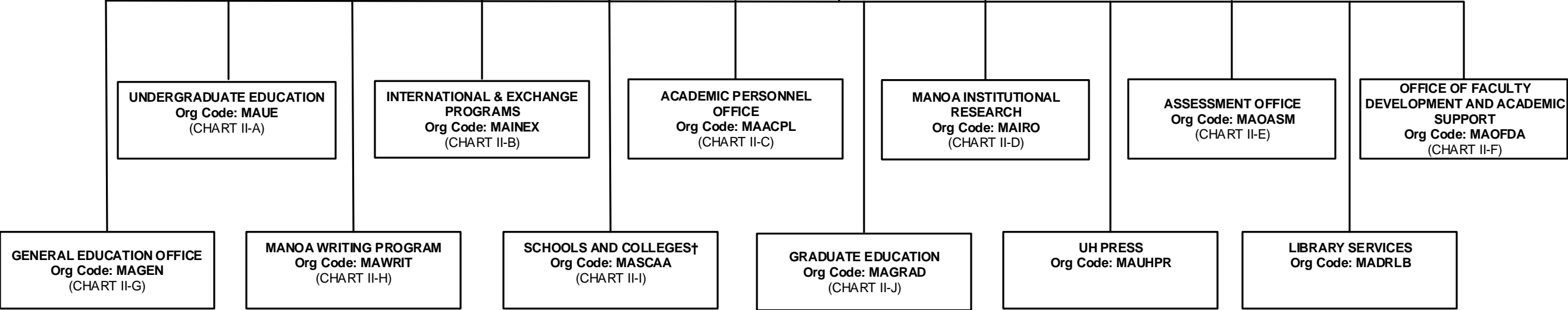
Position Organization Chart  
Chart II

DEPARTMENT TOTAL:	PERM	TEMP
General Funds:	111.00	2.00

OFFICE OF THE CHANCELLOR

OFFICE OF THE VICE CHANCELLOR FOR  
ACADEMIC AFFAIRS  
Org Code: MAVCAA

Vice Chancellor for Academic Affairs, #89104	1.00
Administrative Officer, PBB, #78429	1.00
Associate Vice Chancellor for Academic Affairs, #89169	1.00
Admin & Fiscal Support Sp, PBA, #78055	1.00
IT Specialist, PBB, #78914	1.00
Academic Affairs Program Officer, #89009	1.00
Educational Spec, PBB, #79837	1.00
Academic Affairs Program Officer, #89434	1.00
Human Resources Specialist, PBC, #79166	1.00
Administrative Officer, PBB, #78229	1.00

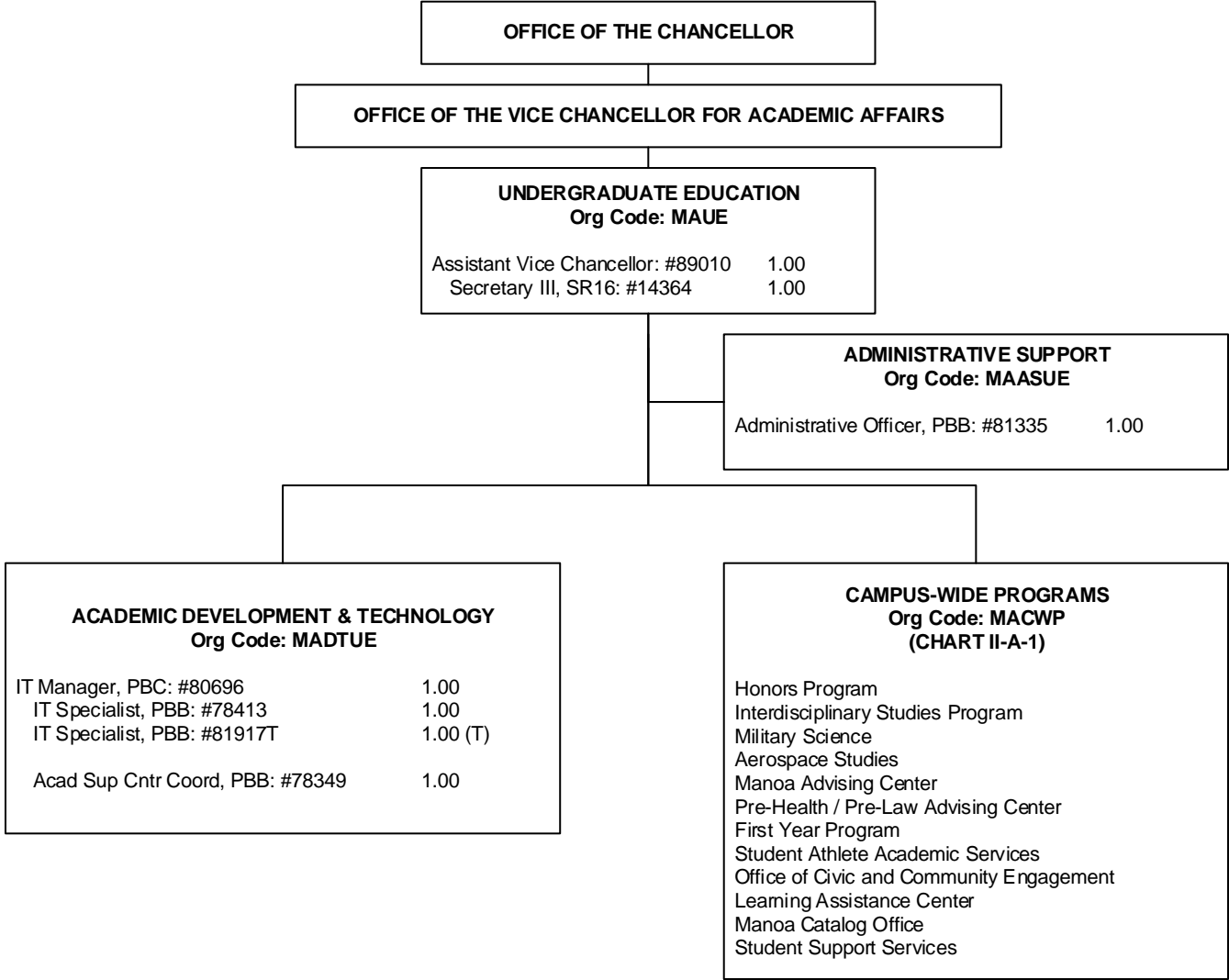


† Except John A. Burns School of Medicine, William S. Richardson School of Law, and the School of Ocean and Earth Science and Technology

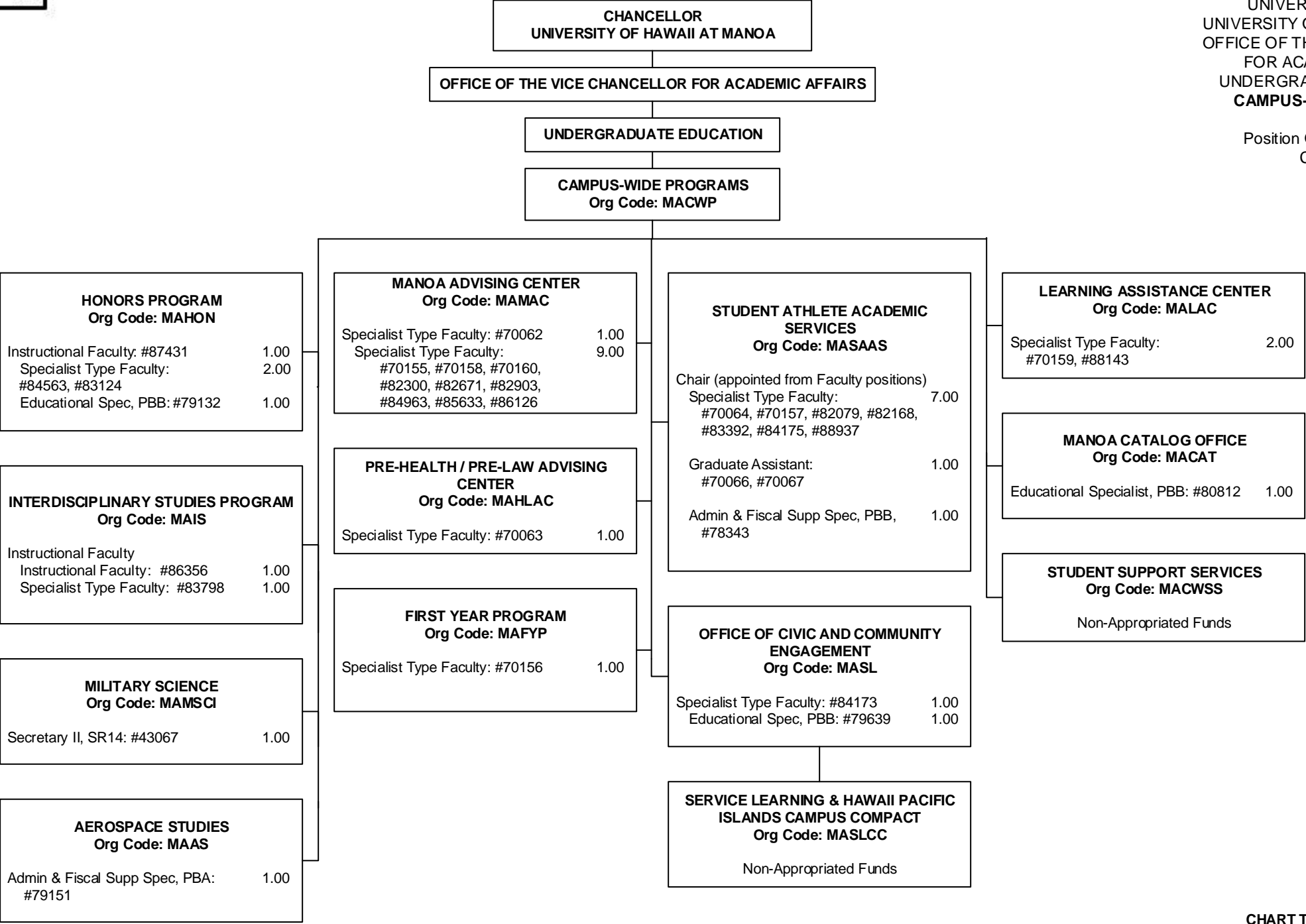
CHART TOTAL:	PERM	TEMP
General Funds:	10.00	--

STATE OF HAWAI'I  
UNIVERSITY OF HAWAI'I  
UNIVERSITY OF HAWAI'I AT MĀNOA  
OFFICE OF THE VICE CHANCELLOR  
FOR ACADEMIC AFFAIRS  
UNDERGRADUATE EDUCATION

Position Organization Chart  
Chart II-A



Position Organization Chart  
Chart II-A-1



STATE OF HAWAI'I

UNIVERSITY OF HAWAI'I

UNIVERSITY OF HAWAI'I AT MĀNOA

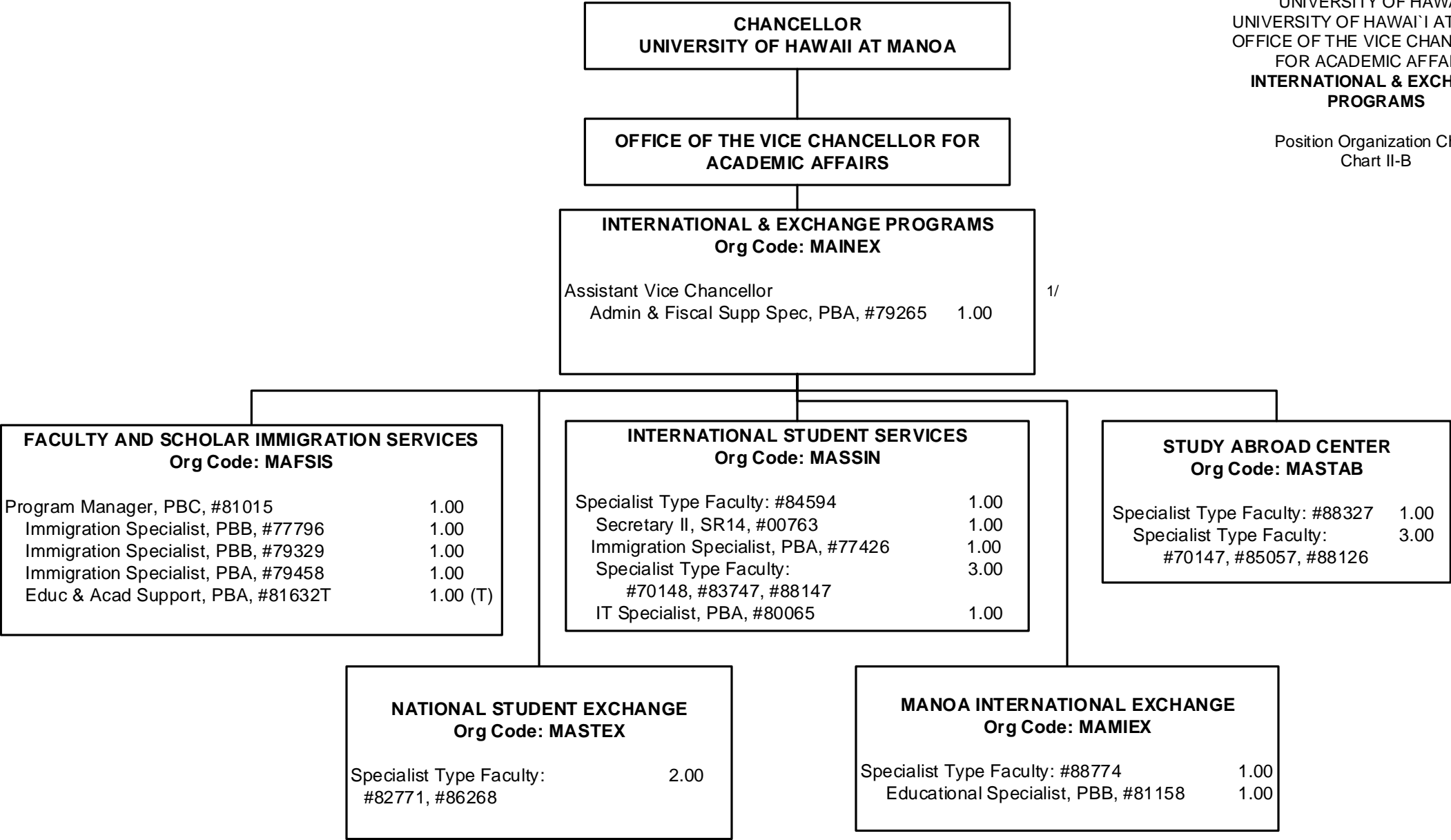
OFFICE OF THE VICE CHANCELLOR

FOR ACADEMIC AFFAIRS

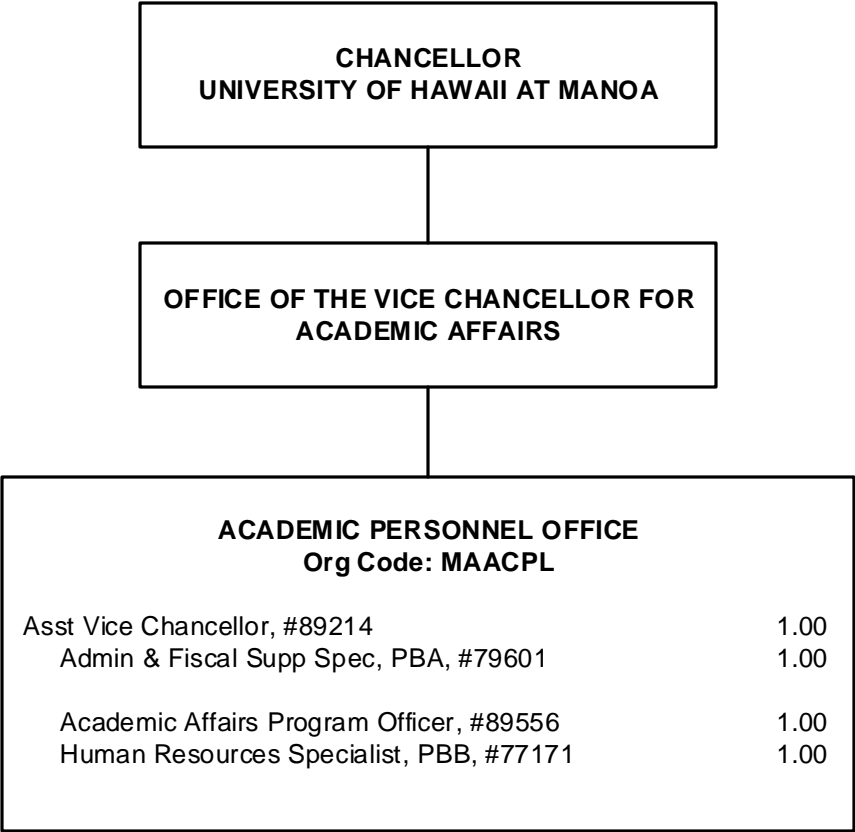
INTERNATIONAL & EXCHANGE

PROGRAMS

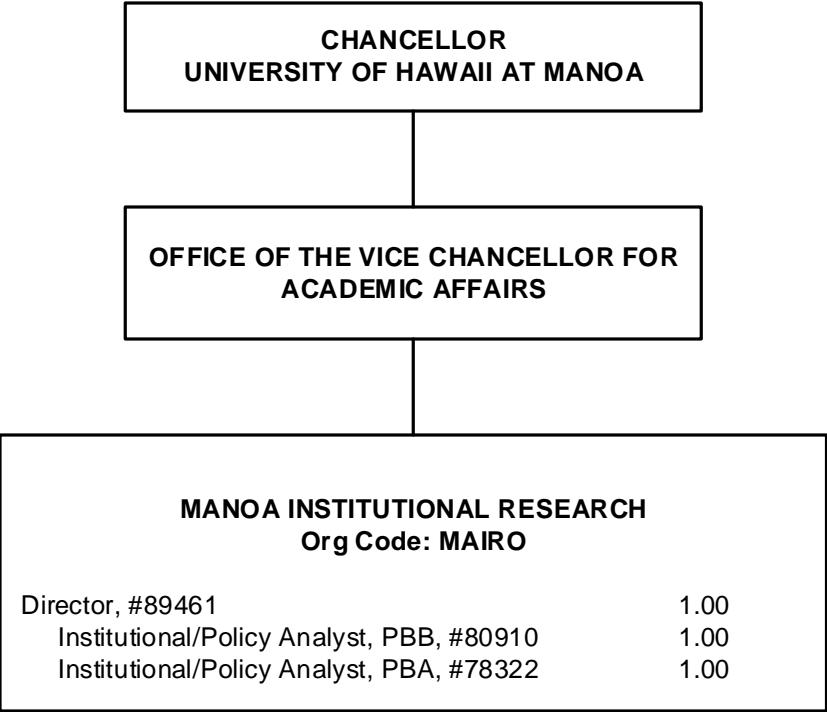
Position Organization Chart  
Chart II-B



1/ Asst Vice Chancellor of International & Exchange Programs appointed from a Dean position.

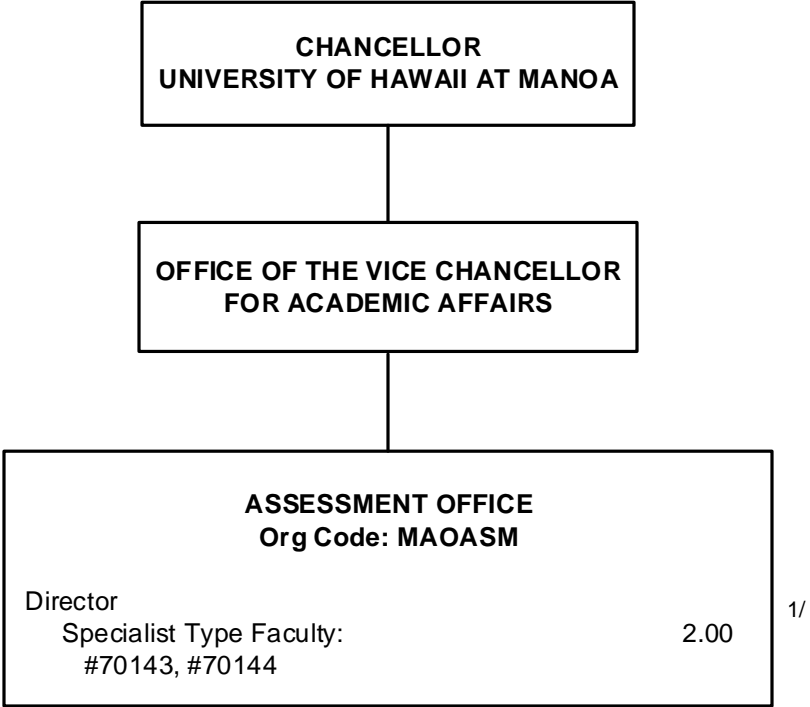


STATE OF HAWAI'I  
UNIVERSITY OF HAWAI'I  
UNIVERSITY OF HAWAI'I AT MĀNOA  
OFFICE OF THE VICE CHANCELLOR  
FOR ACADEMIC AFFAIRS  
**ACADEMIC PERSONNEL OFFICE**  
  
Position Organization Chart  
Chart II-C



STATE OF HAWAI'I  
UNIVERSITY OF HAWAI'I  
UNIVERSITY OF HAWAI'I AT MĀNOA  
OFFICE OF THE VICE CHANCELLOR  
FOR ACADEMIC AFFAIRS  
MĀNOA INSTITUTIONAL RESEARCH

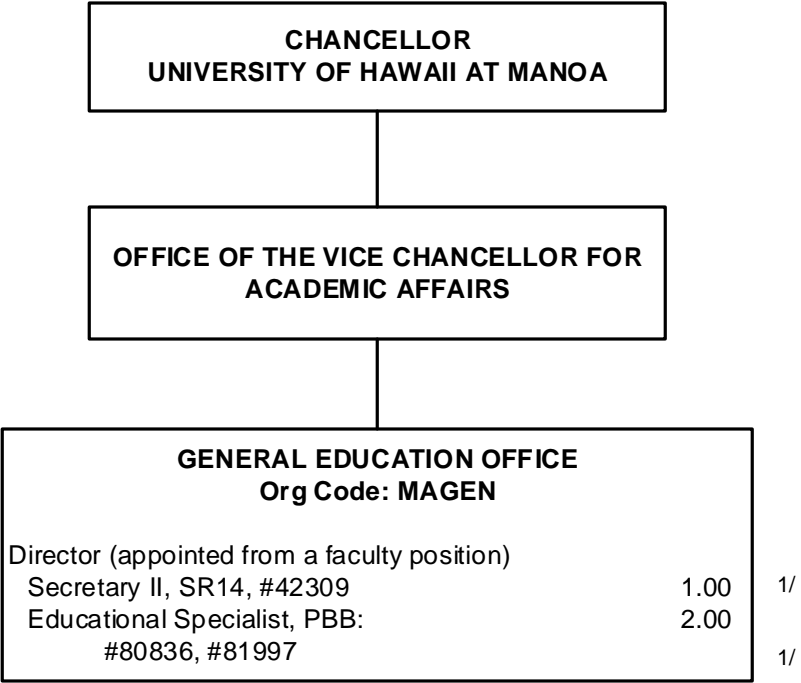
Position Organization Chart  
Chart II-D



STATE OF HAWAI'I  
UNIVERSITY OF HAWAI'I  
UNIVERSITY OF HAWAI'I AT MĀNOA  
OFFICE OF THE VICE CHANCELLOR  
FOR ACADEMIC AFFAIRS  
**ASSESSMENT OFFICE**

Position Organization Chart  
Chart II-E

1/ Director appointed from a faculty position to oversee Assessment operations.

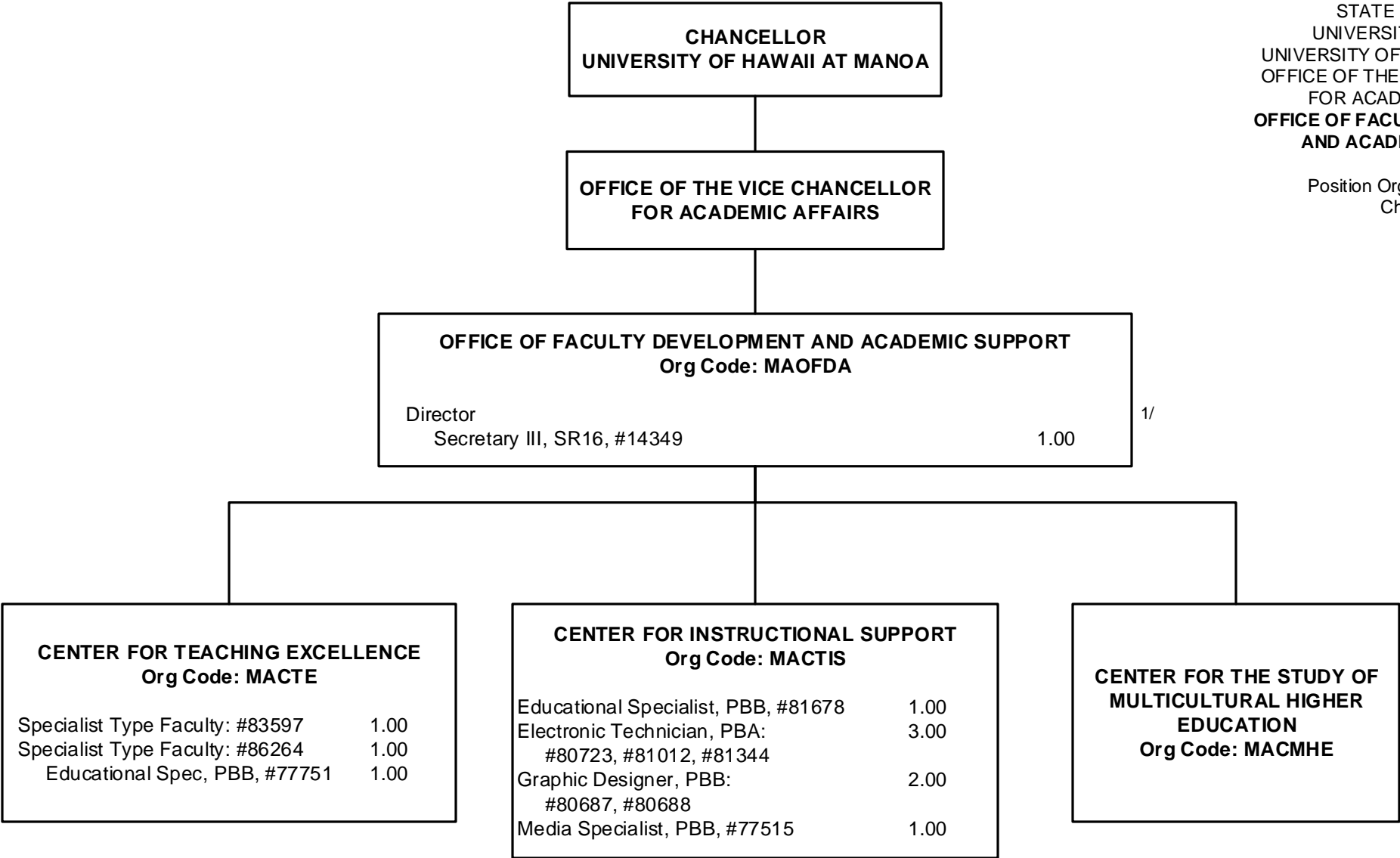


STATE OF HAWAI'I  
UNIVERSITY OF HAWAI'I  
UNIVERSITY OF HAWAI'I AT MĀNOA  
OFFICE OF THE VICE CHANCELLOR  
FOR ACADEMIC AFFAIRS  
GENERAL EDUCATION OFFICE

Position Organization Chart  
Chart II-G

1/ Secretary II, #42309 and Educ Spec, #81997 partially support the Mānoa Writing Program.

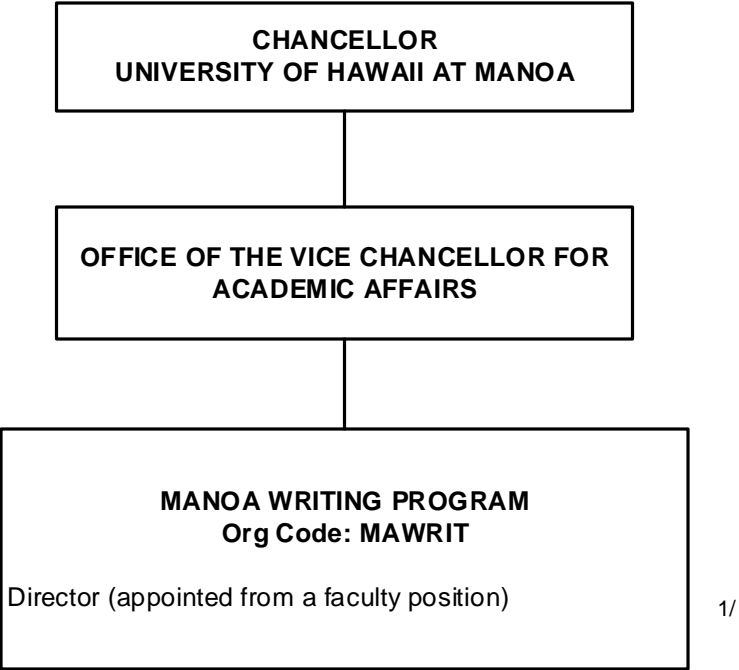




STATE OF HAWAI'I  
UNIVERSITY OF HAWAI'I  
UNIVERSITY OF HAWAI'I AT MĀNOA  
OFFICE OF THE VICE CHANCELLOR  
FOR ACADEMIC AFFAIRS  
OFFICE OF FACULTY DEVELOPMENT  
AND ACADEMIC SUPPORT

Position Organization Chart  
Chart II-F

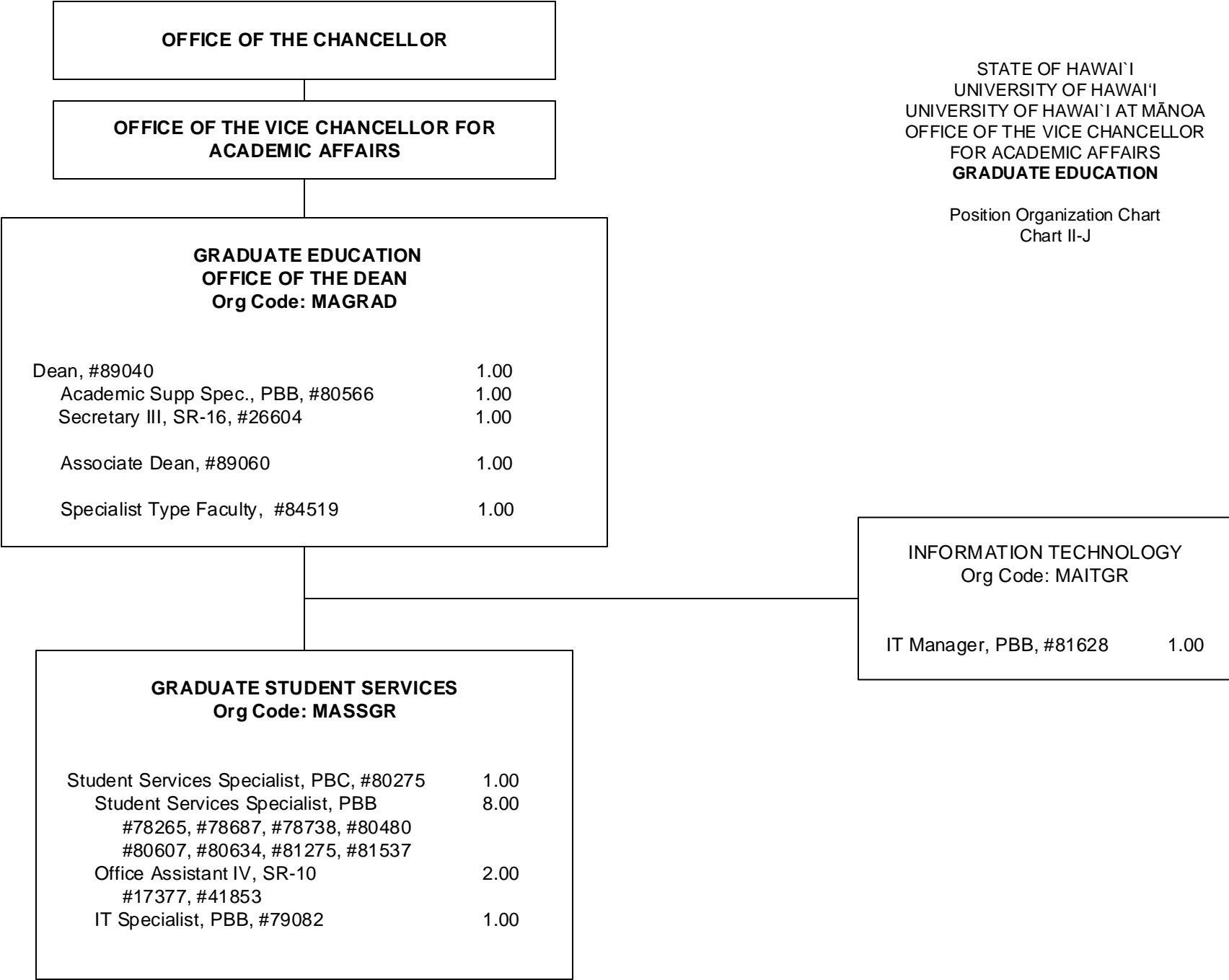
1/ Director appointed from a faculty position to oversee OFDAS operations.



STATE OF HAWAI'I  
UNIVERSITY OF HAWAI'I  
UNIVERSITY OF HAWAI'I AT MĀNOA  
OFFICE OF THE VICE CHANCELLOR  
FOR ACADEMIC AFFAIRS  
**MĀNOA WRITING PROGRAM**

Position Organization Chart  
Chart II-H

1/ Positions in the General Education Office partially support this Office: Secretary II, SR14, #42309 and Educational Specialists, PBB, #80836, #81997. Primary supervisor is General Education Office Director.



STATE OF HAWAI'I  
UNIVERSITY OF HAWAI'I  
UNIVERSITY OF HAWAI'I AT MĀNOA  
OFFICE OF THE VICE CHANCELLOR  
FOR ACADEMIC AFFAIRS  
**GRADUATE EDUCATION**

Position Organization Chart  
Chart II-J