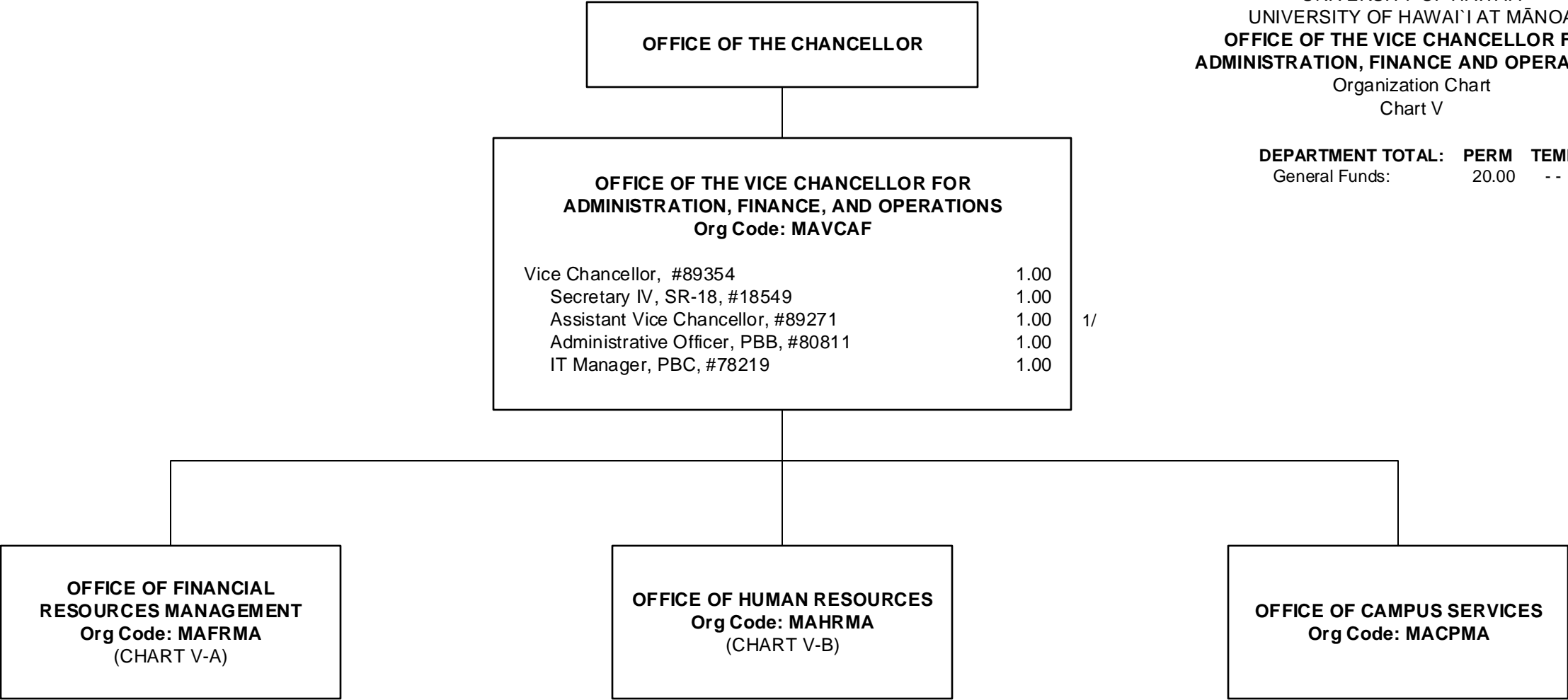


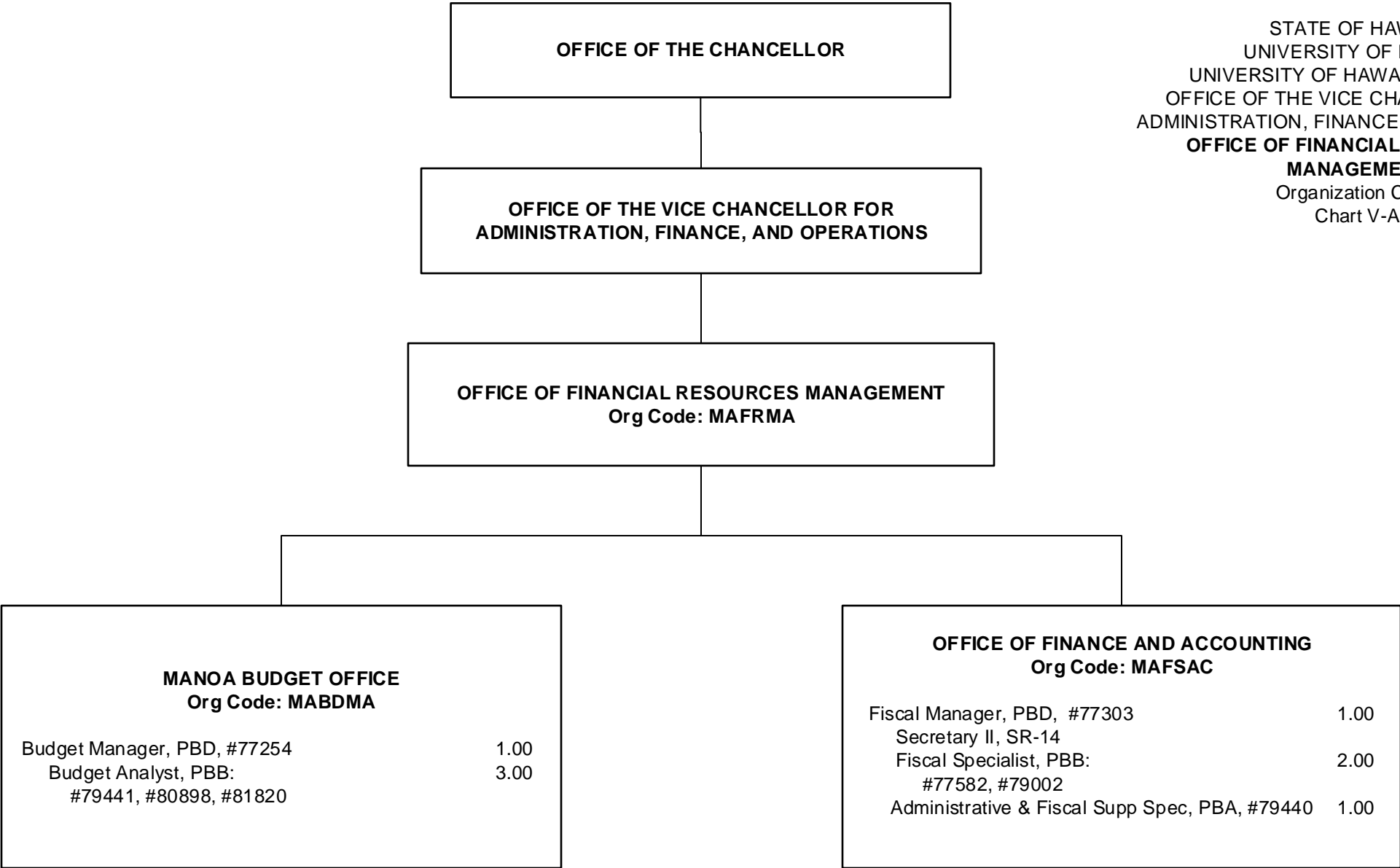
STATE OF HAWAII  
UNIVERSITY OF HAWAII  
UNIVERSITY OF HAWAII AT MĀNOA  
OFFICE OF THE VICE CHANCELLOR FOR  
ADMINISTRATION, FINANCE AND OPERATIONS  
Organization Chart  
Chart V

DEPARTMENT TOTAL:	PERM	TEMP
General Funds:	20.00	- -



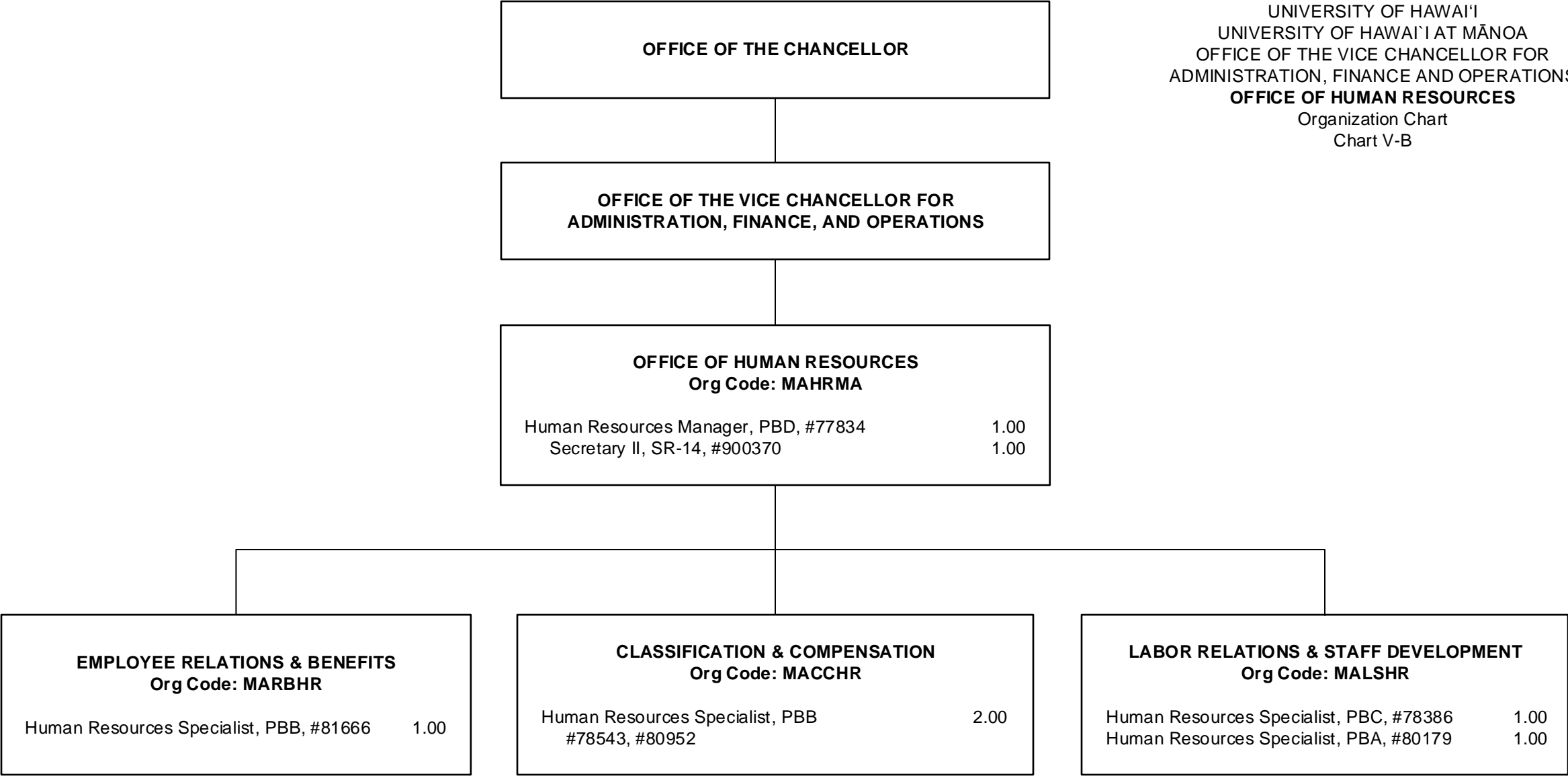
1/ Assistant Vice Chancellor, #89271 to be redescribed

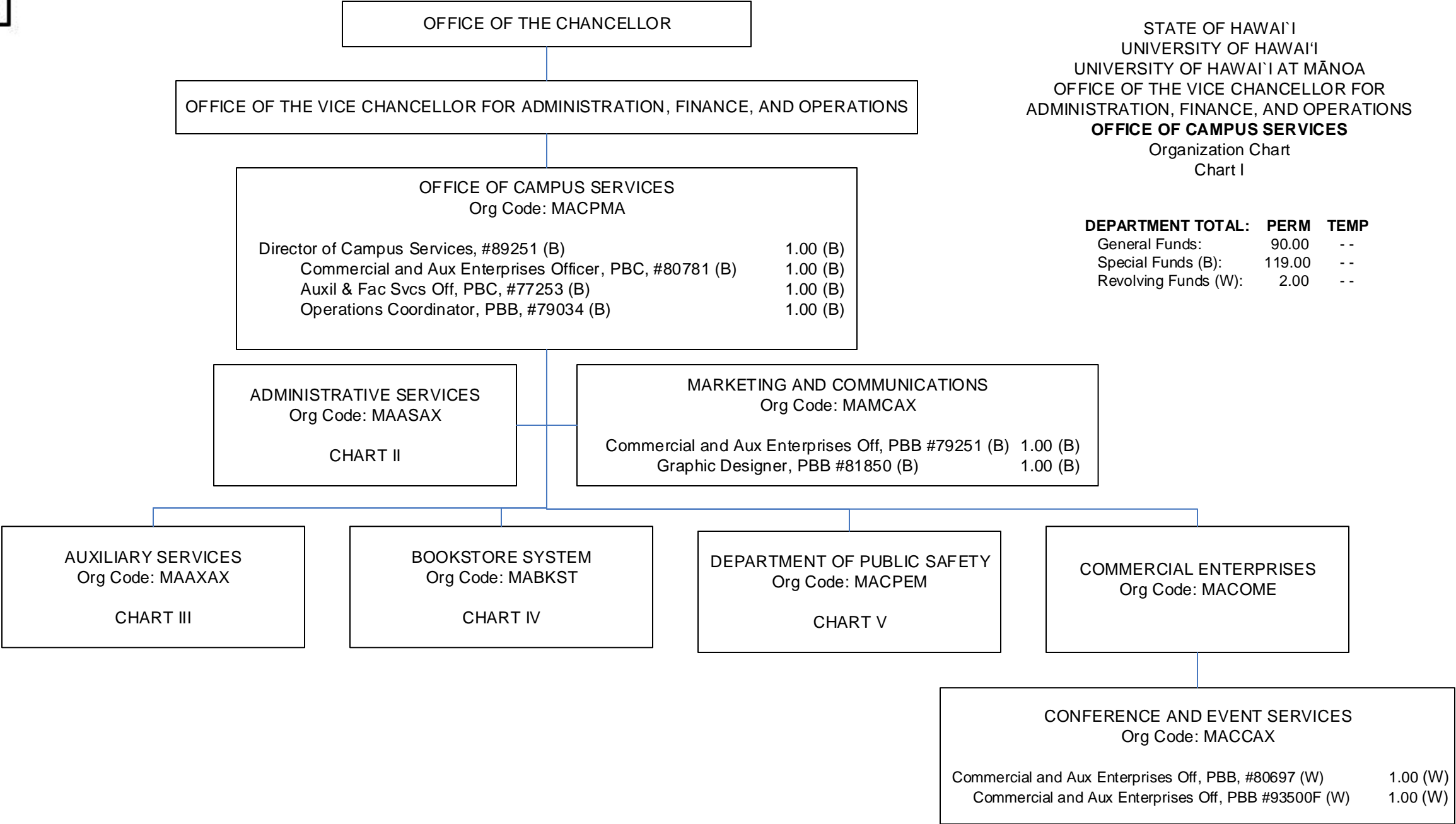
CHART TOTAL:	PERM	TEMP
General Funds:	5.00	- -



STATE OF HAWAI'I  
UNIVERSITY OF HAWAI'I  
UNIVERSITY OF HAWAI'I AT MĀNOA  
OFFICE OF THE VICE CHANCELLOR FOR  
ADMINISTRATION, FINANCE AND OPERATIONS  
**OFFICE OF FINANCIAL RESOURCES  
MANAGEMENT**  
Organization Chart  
Chart V-A

1/ Secretary II - new, pending approval





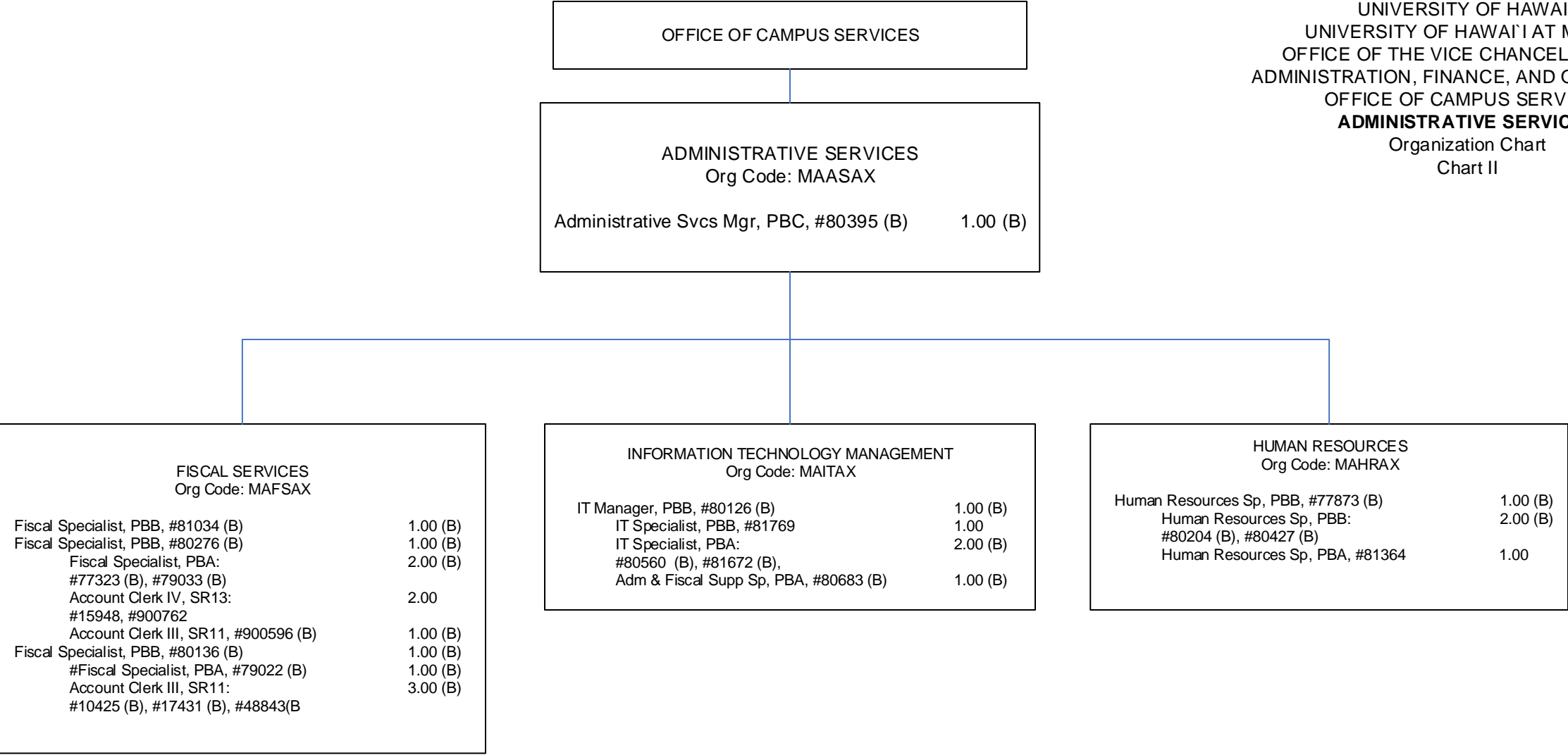
STATE OF HAWAI'I  
UNIVERSITY OF HAWAI'I  
UNIVERSITY OF HAWAI'I AT MĀNOA  
OFFICE OF THE VICE CHANCELLOR FOR  
ADMINISTRATION, FINANCE, AND OPERATIONS  
**OFFICE OF CAMPUS SERVICES**  
Organization Chart  
Chart I

DEPARTMENT TOTAL:	PERM	TEMP
General Funds:	90.00	--
Special Funds (B):	119.00	--
Revolving Funds (W):	2.00	--

1/ To be established  
(B) Special fund position abolished but retained count: #13644

CHART TOTAL:	PERM	TEMP
Special Funds (B):	7.00	--
Revolving Funds (W):	2.00	--

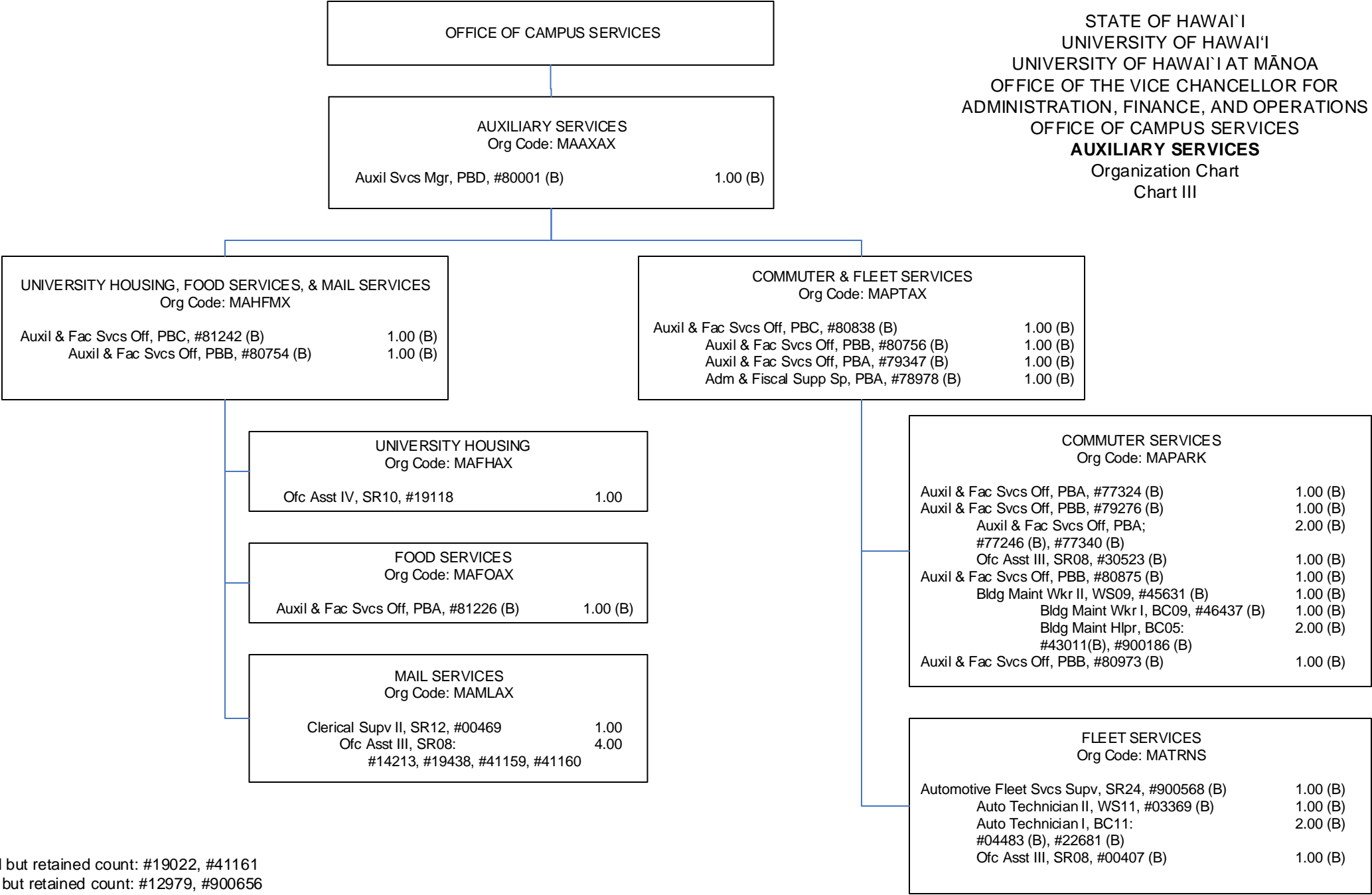
STATE OF HAWAI'I  
UNIVERSITY OF HAWAI'I  
UNIVERSITY OF HAWAI'I AT MĀNOA  
OFFICE OF THE VICE CHANCELLOR FOR  
ADMINISTRATION, FINANCE, AND OPERATIONS  
OFFICE OF CAMPUS SERVICES  
**ADMINISTRATIVE SERVICES**  
Organization Chart  
Chart II



(B) Special fund positions abolished but retained position count: #14867, #14988, #900127

CHART TOTAL:	PERM	TEMP
General Funds:	4.00	--
Special Funds (B):	21.00	--

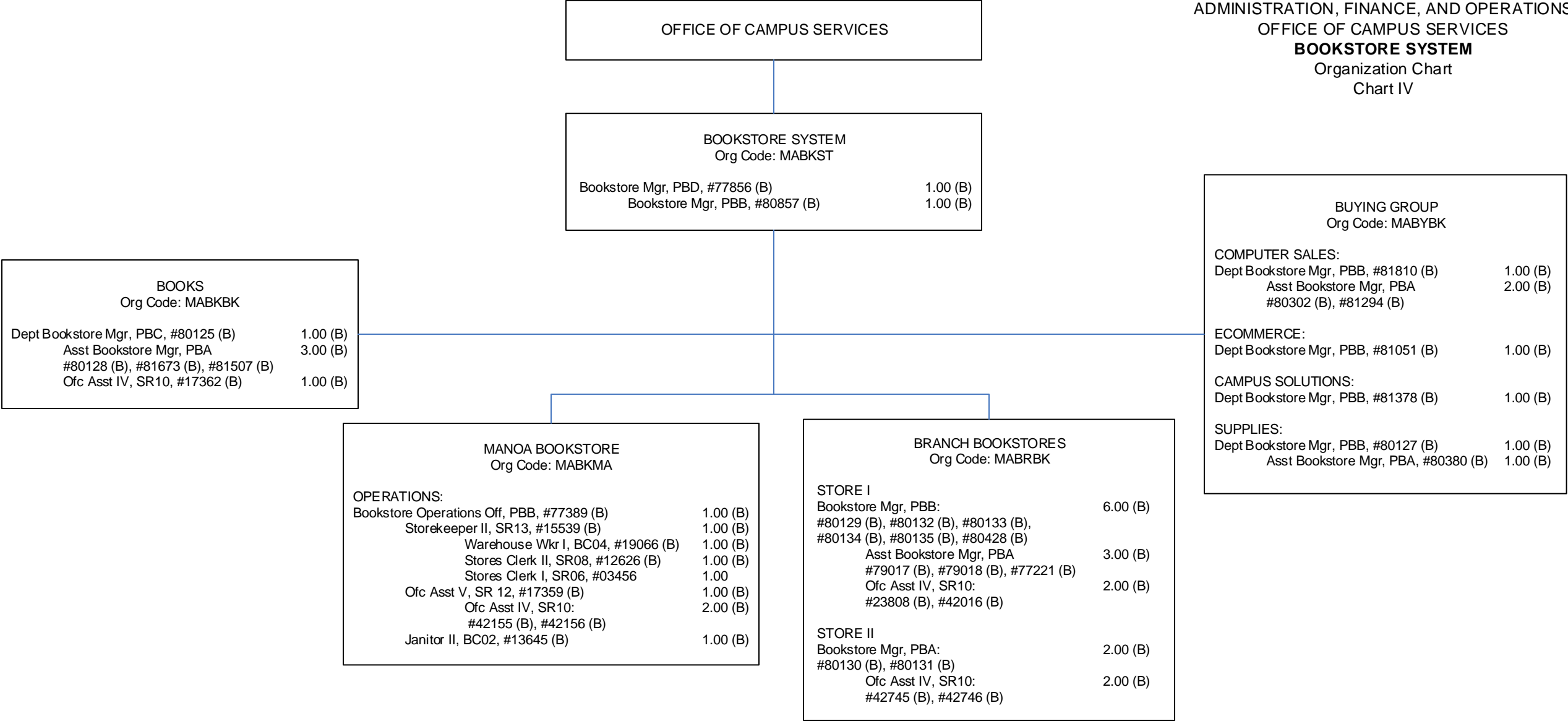
STATE OF HAWAII  
UNIVERSITY OF HAWAII  
UNIVERSITY OF HAWAII AT MĀNOA  
OFFICE OF THE VICE CHANCELLOR FOR  
ADMINISTRATION, FINANCE, AND OPERATIONS  
OFFICE OF CAMPUS SERVICES  
**AUXILIARY SERVICES**  
Organization Chart  
Chart III



(A) General fund position abolished but retained count: #19022, #41161  
(B) Special fund position abolished but retained count: #12979, #900656

CHART TOTAL:	PERM	TEMP
General Funds:	8.00	--
Special Funds (B):	26.00	--

STATE OF HAWAI'I  
UNIVERSITY OF HAWAI'I  
UNIVERSITY OF HAWAI'I AT MĀNOA  
OFFICE OF THE VICE CHANCELLOR FOR  
ADMINISTRATION, FINANCE, AND OPERATIONS  
OFFICE OF CAMPUS SERVICES  
**BOOKSTORE SYSTEM**  
Organization Chart  
Chart IV



(B) Special fund positions abolished but retained count: #06801, #12627, #13642, #13643, #13944, #13945, #15057, #15538, #17356, #17357, #17358, #17360, #17361, #18089, #19065, #22931, #23809, #24637, #24959, #26727, #27876, #27843, #27887, #32675, #35138, #47164, #17651, #94356F

CHART TOTAL:	PERM	TEMP
General Funds:	1.00	--
Special Funds (B):	65.00	--

OFFICE OF CAMPUS SERVICES		
DEPARTMENT OF PUBLIC SAFETY Org Code: MACPEM		
Auxil & Fac Svc Mgr, PBD, #80477		1.00
Safety/Security Sp, PBB, #79691, #78327, #79836		3.00
Admin & Fiscal Support Sp, PBA, #81244, #81709		2.00
Auxil & Fac Svcs Off, PBC, #81189		1.00
Safety/Security Sp, PBB, #78184, #78865		2.00
Auxil & Fac Svc Off, PBB, #81195		1.00
University Security Off II, SR16,		9.00
#03574, #13852, #39544, #48514, #111648, #900578,		
#900697, #900745, #900761		
University Security Off I, SR14,		58.00
#03575, #13542, #13851, #22487, #24542, #24575,		
#24576, #28608, #28609, #28610, #28611, #29174,		
#30526, #36659, #36660, #36661, #36667, #36668,		
#39488, #39489, #39491, #39492, #39493, #45375,		
#48515, #48516, #49280, #49281, #49282, #110514,		
#900313, #900314, #900316, #900318, #900319, #900320,		
#900566, #900755, #900756, #900757, #900758, #900759,		
#900760, #900764, #900765, #900766, #900767, #900768,		
#900769, #900770, #900771, #900772, #900773, #900774,		
#900775, #900776, #900777, #900778,		