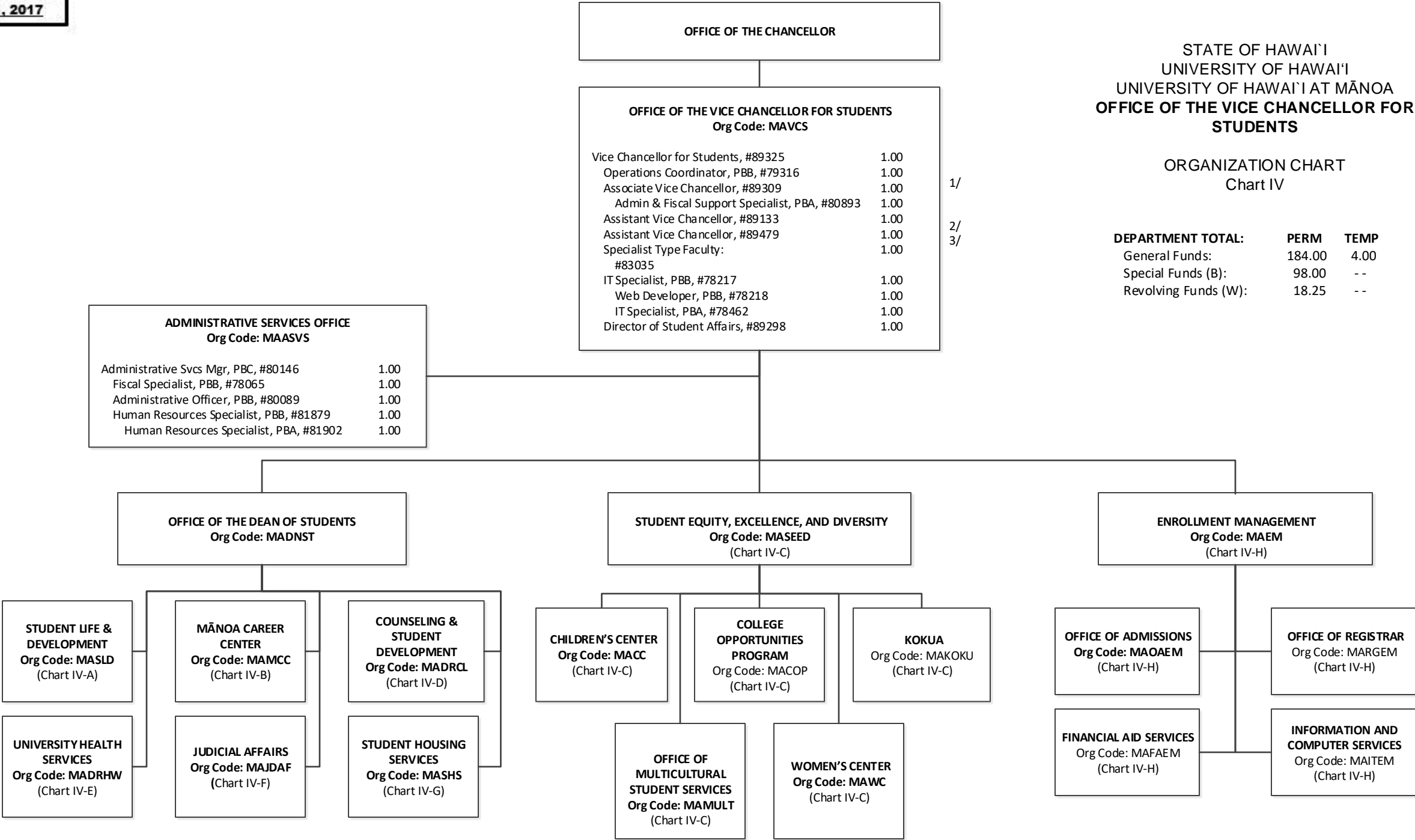


STATE OF HAWAI'I
UNIVERSITY OF HAWAI'I
UNIVERSITY OF HAWAI'I AT MĀNOA
OFFICE OF THE VICE CHANCELLOR FOR
STUDENTS

ORGANIZATION CHART
Chart IV

DEPARTMENT TOTAL:	PERM	TEMP
General Funds:	184.00	4.00
Special Funds (B):	98.00	--
Revolving Funds (W):	18.25	--

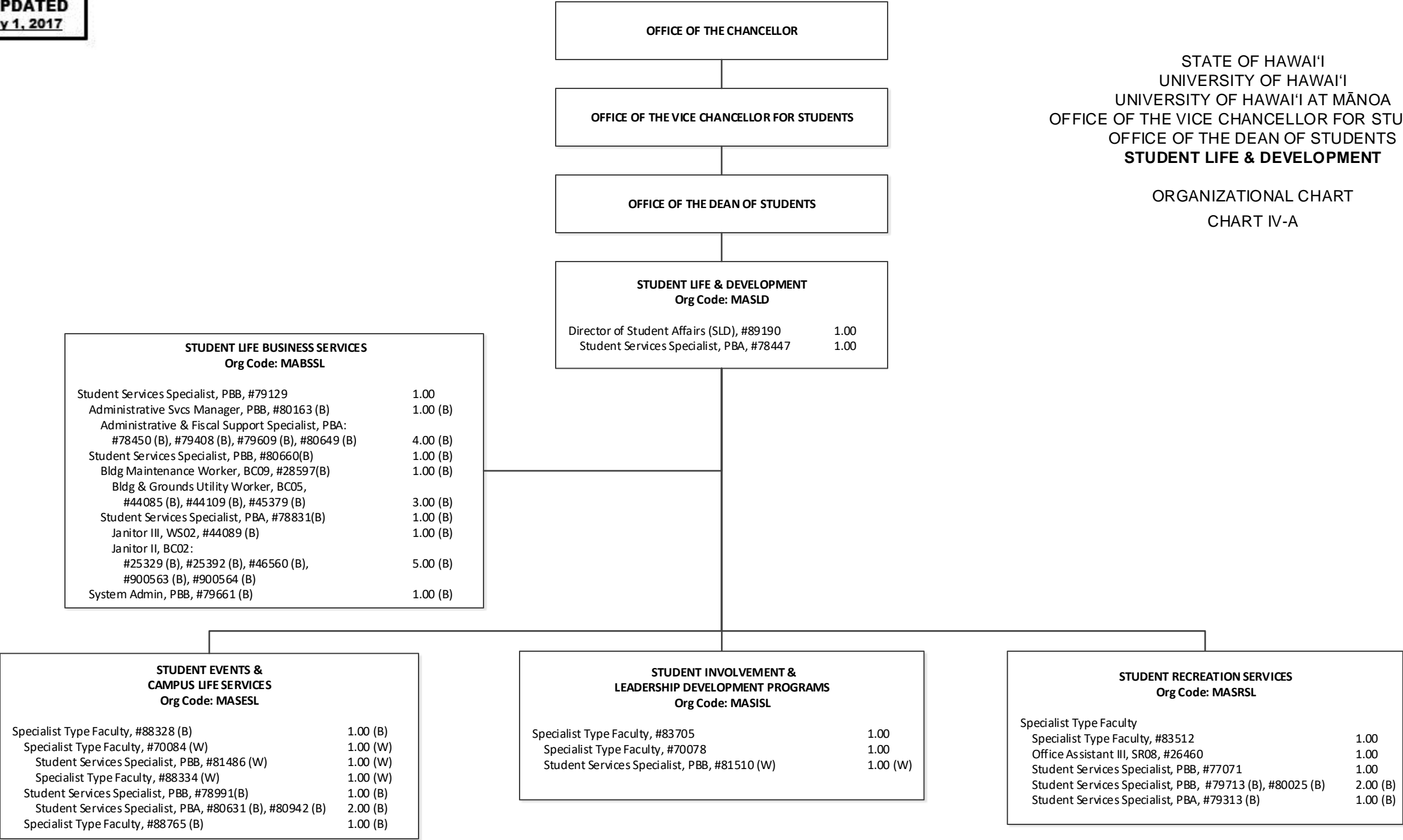


1/ Associate Vice Chancellor, #89309 in OVCS also serves as Dean of Students
2/ Assistant Vice Chancellor, #89133 in OVCS also serves as Enrollment Management and Director
3/ Assistant Vice Chancellor, #89479 in OVCS also serves as Director of SEED

CHART TOTAL:	PERM	TEMP
General Funds:	16.00	--

STATE OF HAWAI'I
UNIVERSITY OF HAWAI'I
UNIVERSITY OF HAWAI'I AT MĀNOA
OFFICE OF THE VICE CHANCELLOR FOR STUDENTS
OFFICE OF THE DEAN OF STUDENTS
STUDENT LIFE & DEVELOPMENT

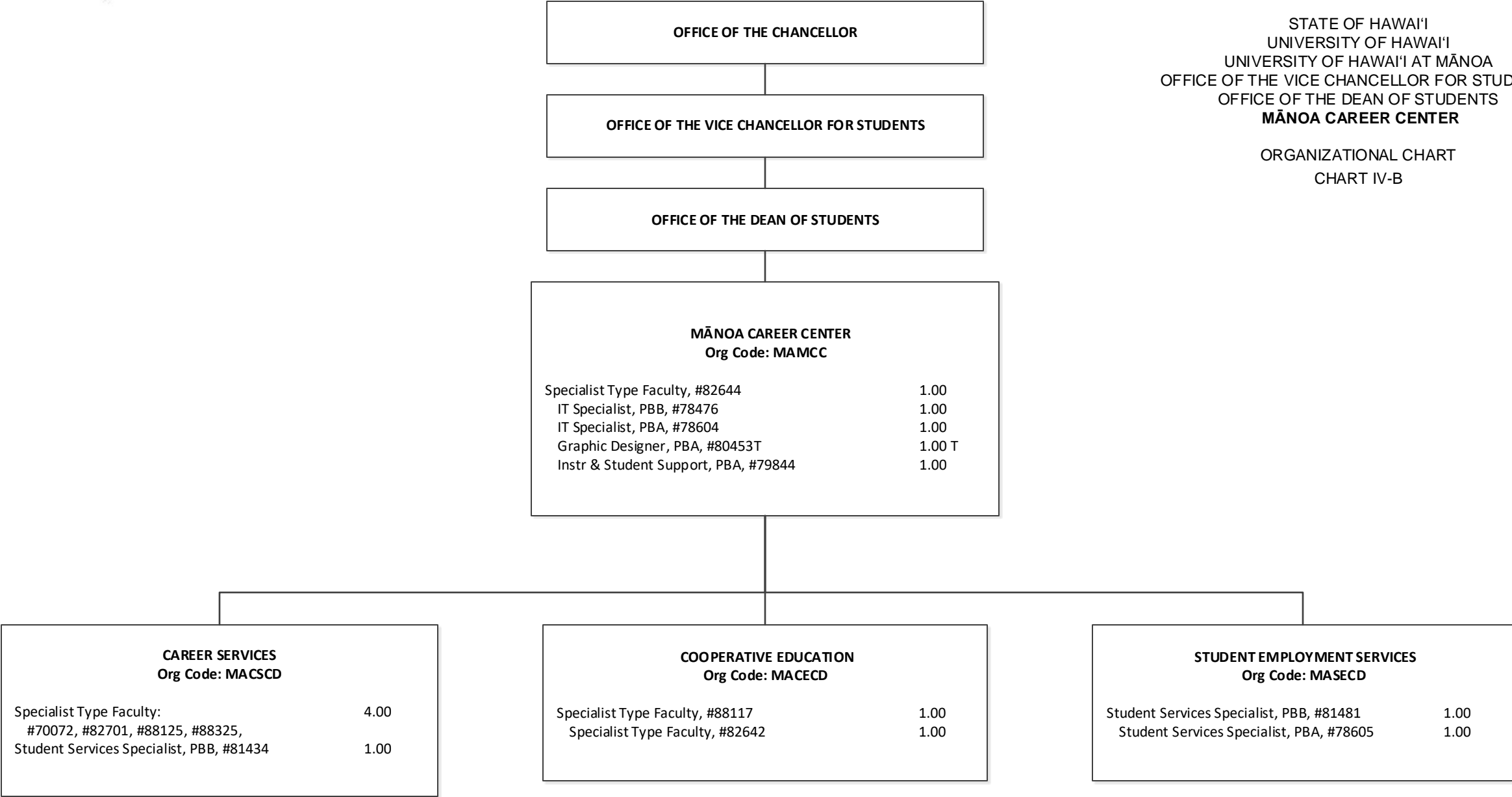
ORGANIZATIONAL CHART
CHART IV-A



1/

1/ Specialist Type Faculty, #85083 in Student Recreation Services swept into Chancellor's Pool 12/02/2016

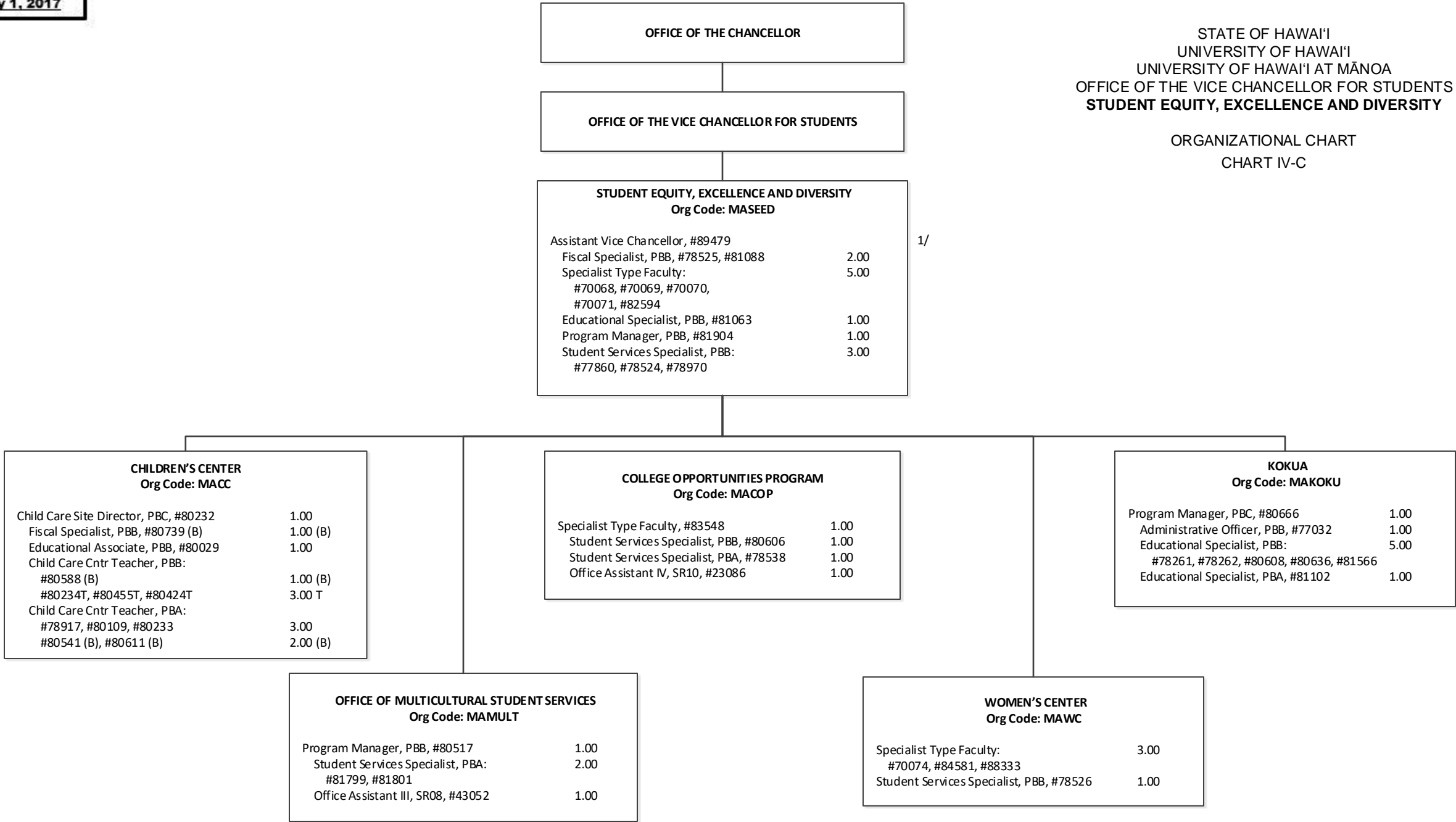
CHART TOTAL:	PERM	TEMP
General Funds:	8.00	--
Special Funds (B):	26.00	--
Revolving Funds (W):	4.00	--



Abolished position #11046 (1.00 FTE)

STATE OF HAWAI'I
UNIVERSITY OF HAWAI'I
UNIVERSITY OF HAWAI'I AT MĀNOA
OFFICE OF THE VICE CHANCELLOR FOR STUDENTS
STUDENT EQUITY, EXCELLENCE AND DIVERSITY

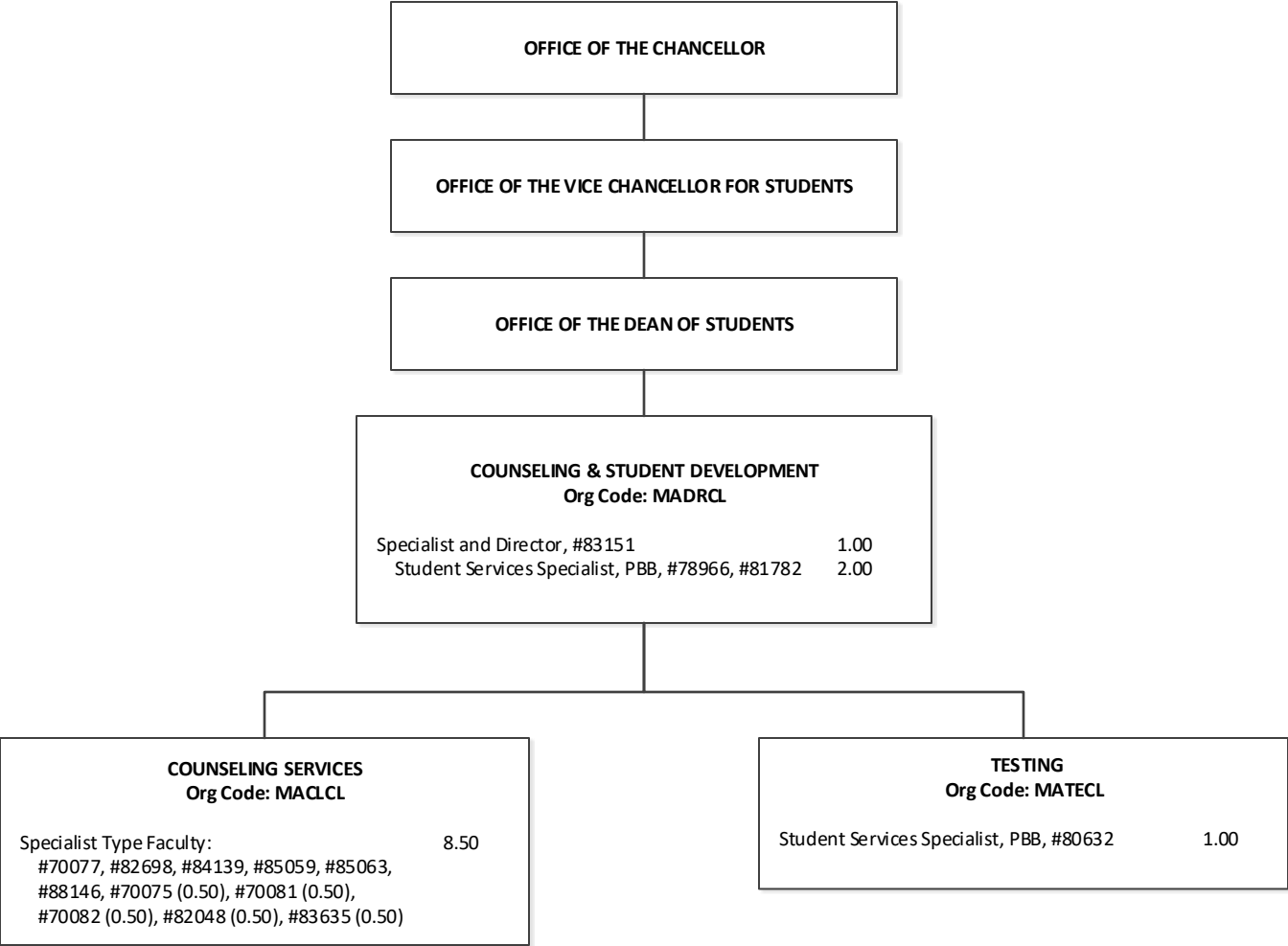
ORGANIZATIONAL CHART
CHART IV-C



1/ Assistant Vice Chancellor, #89479 in Student, Equity, Excellence and Diversity position count reflected on Chart IV

Abolished position #70073 (1.00 FTE)

CHART TOTAL:	PERM	TEMP
General Funds:	38.00	3.00
Special Funds (B):	4.00	- -



STATE OF HAWAI'I
UNIVERSITY OF HAWAI'I
UNIVERSITY OF HAWAI'I AT MĀNOA
OFFICE OF THE VICE CHANCELLOR FOR STUDENTS
OFFICE OF THE DEAN OF STUDENTS
COUNSELING & STUDENT DEVELOPMENT

ORGANIZATIONAL CHART
CHART IV-D

STATE OF HAWAI'I
UNIVERSITY OF HAWAI'I
UNIVERSITY OF HAWAI'I AT MĀNOA
OFFICE OF THE VICE CHANCELLOR FOR STUDENTS
OFFICE OF THE DEAN OF STUDENTS
UNIVERSITY HEALTH SERVICES

ORGANIZATIONAL CHART
CHART IV-E

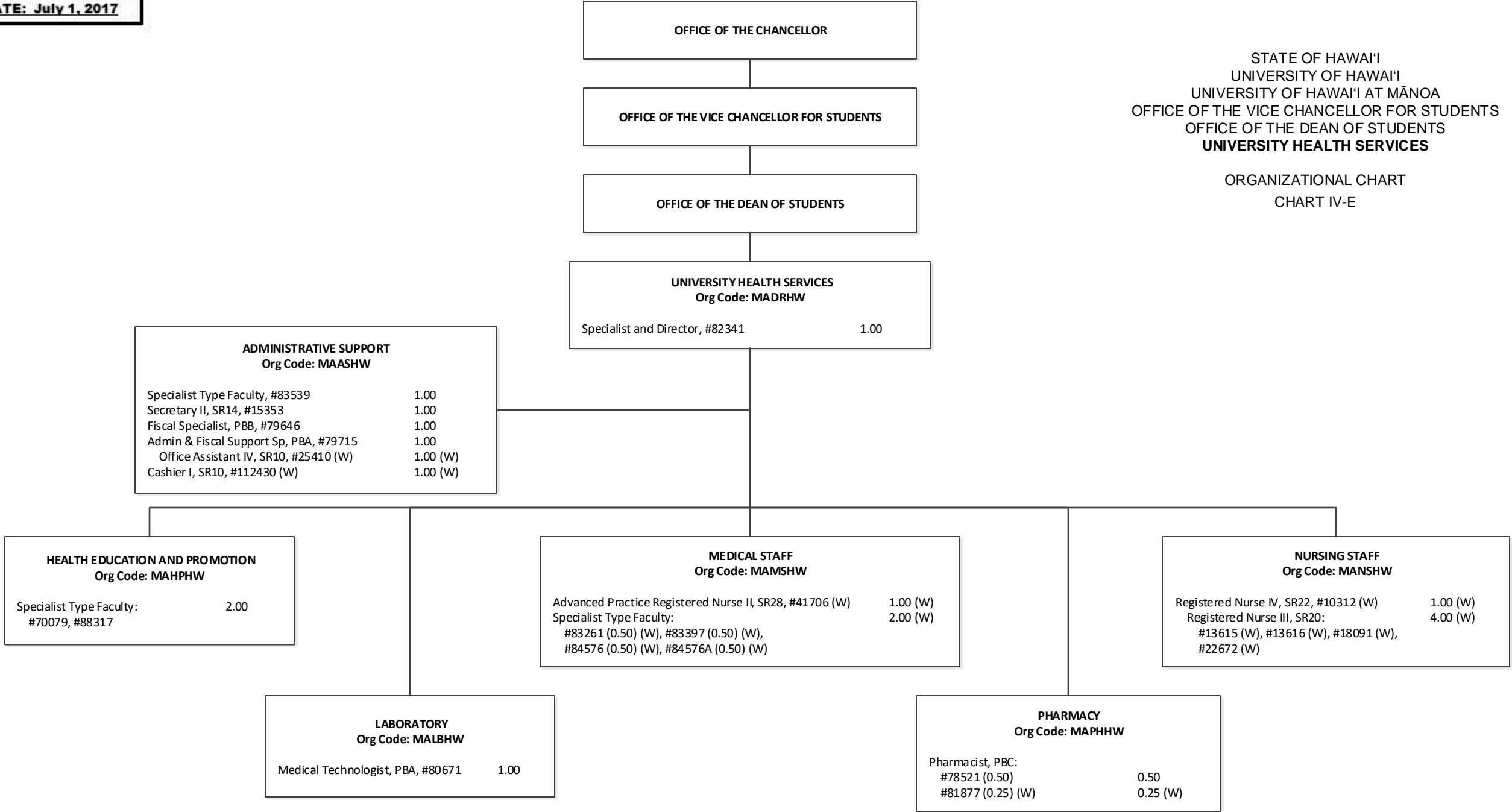
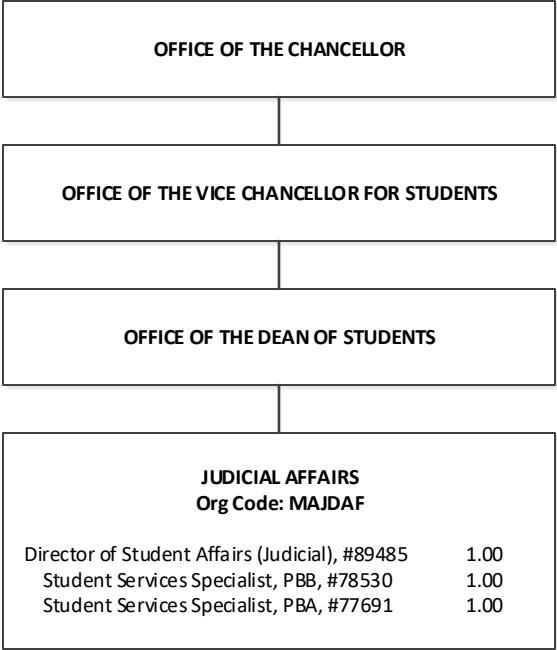


CHART TOTAL:	PERM	TEMP
General Funds:	8.50	--
Revolving Funds (W):	10.25	--

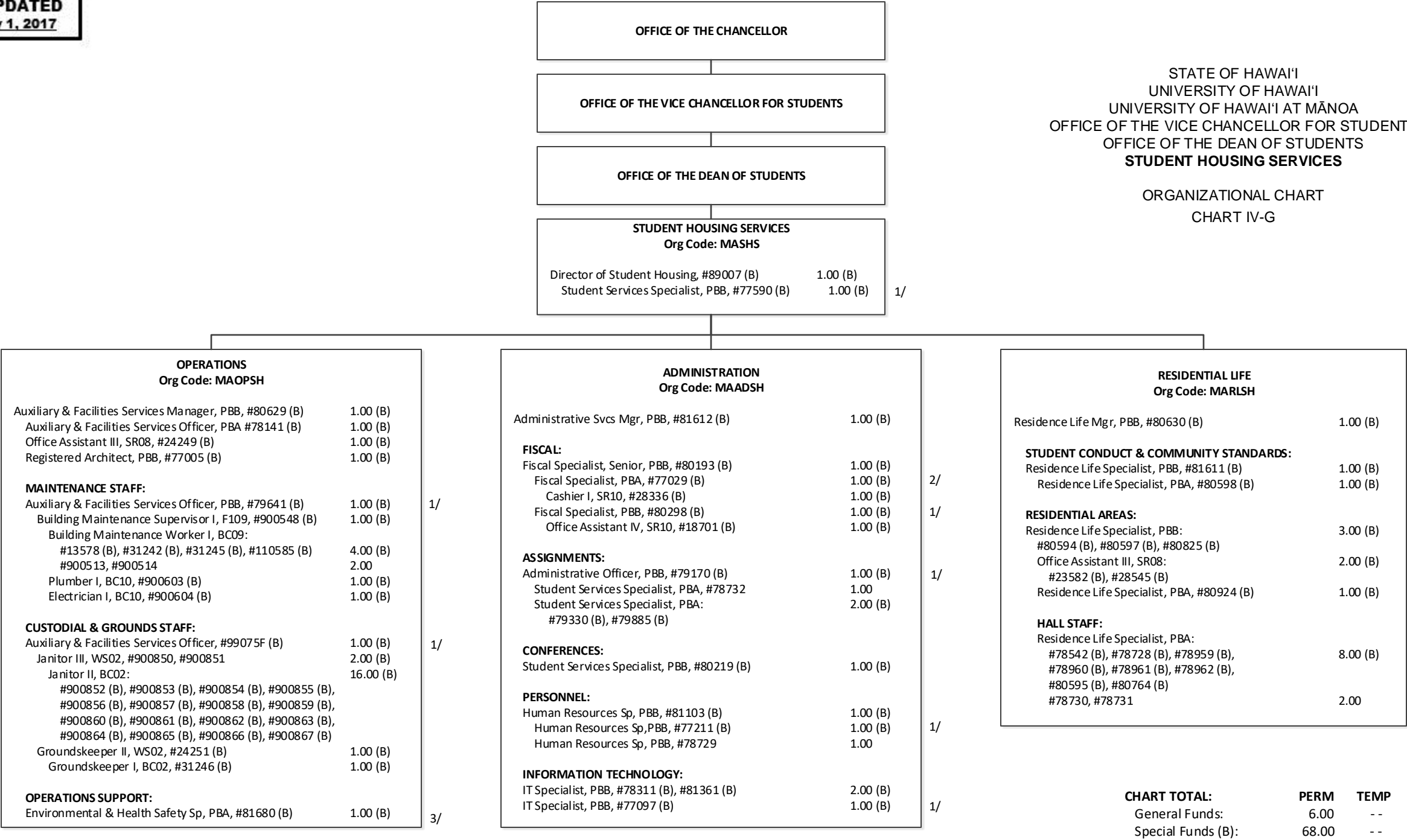


STATE OF HAWAI'I
UNIVERSITY OF HAWAI'I
UNIVERSITY OF HAWAI'I AT MĀNOA
OFFICE OF THE VICE CHANCELLOR FOR STUDENTS
OFFICE OF THE DEAN OF STUDENTS
JUDICIAL AFFAIRS

ORGANIZATIONAL CHART
CHART IV-F

STATE OF HAWAI'I
UNIVERSITY OF HAWAI'I
UNIVERSITY OF HAWAI'I AT MĀNOA
OFFICE OF THE VICE CHANCELLOR FOR STUDENTS
OFFICE OF THE DEAN OF STUDENTS
STUDENT HOUSING SERVICES

ORGANIZATIONAL CHART
CHART IV-G



1/ Pending establishment: Student Services Specialist #77590 in Student Housing Services; Auxiliary & Facilities Services Officer #79641 & #99075F in Operations;
Fiscal Specialist #80298, Administrative Officer, #79170, Human Resources Sp, #77211 & IT Specialist #77097 in Administration

2/ To be redescribed: Fiscal Specialist #77029

3/ Supervised by Environmental Health & Safety

STATE OF HAWAI'I
UNIVERSITY OF HAWAI'I
UNIVERSITY OF HAWAI'I AT MĀNOA
OFFICE OF THE VICE CHANCELLOR FOR STUDENTS
ENROLLMENT MANAGEMENT

ORGANIZATIONAL CHART
CHART IV-H

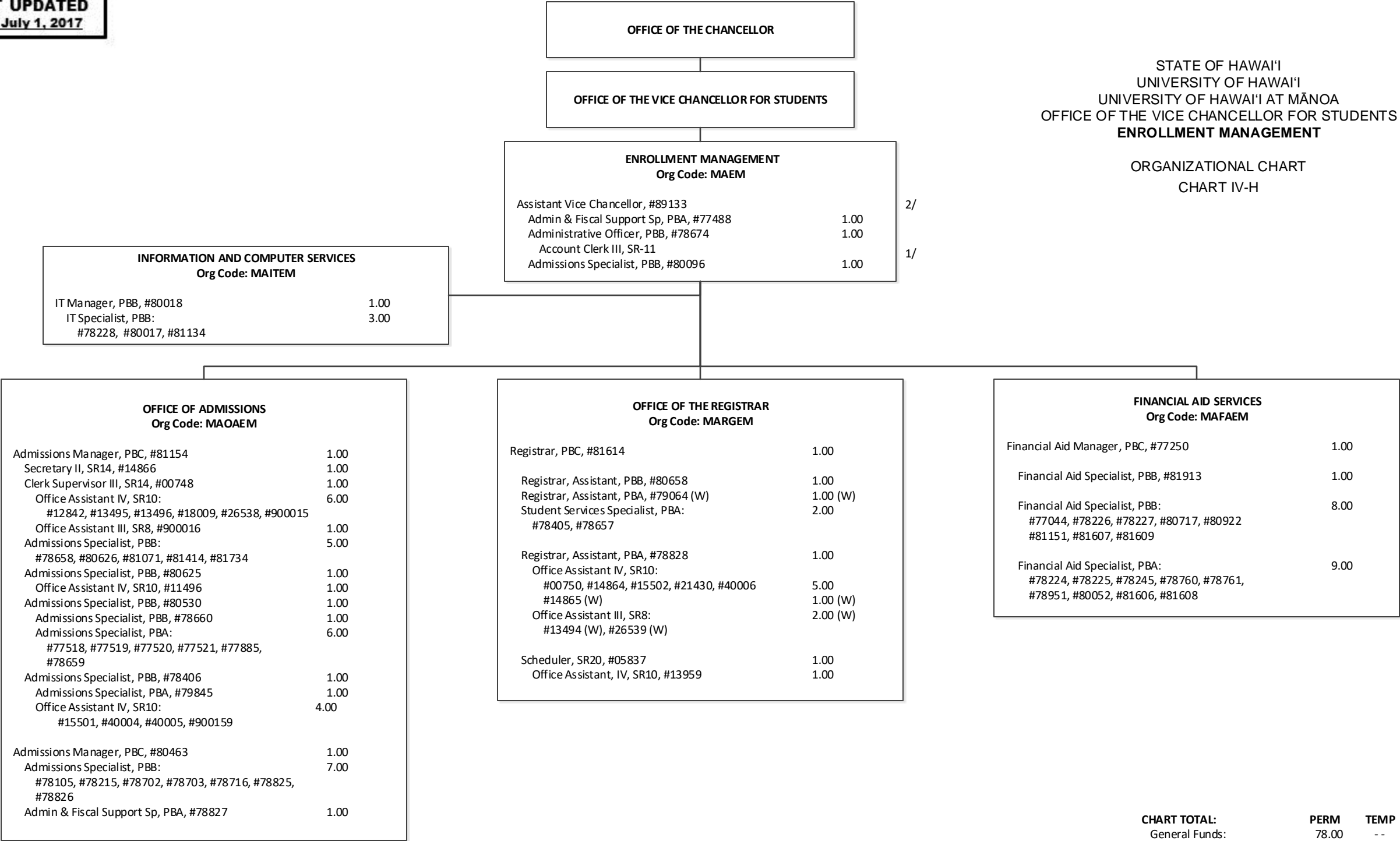


CHART TOTAL:	PERM	TEMP
General Funds:	78.00	--
Revolving Funds (W):	4.00	--

1/ Acct Clerk III in Enrollment Management is a new position approved in 2/17/05 reorg; position number to be determined
2/ Assistant Vice Chancellor, #89133 position count reflected on Chart IV