

STATE OF HAWAI'I

UNIVERSITY OF HAWAI'I

UNIVERSITY OF HAWAI'I AT MĀNOA

OFFICE OF THE VICE CHANCELLOR FOR RESEARCH

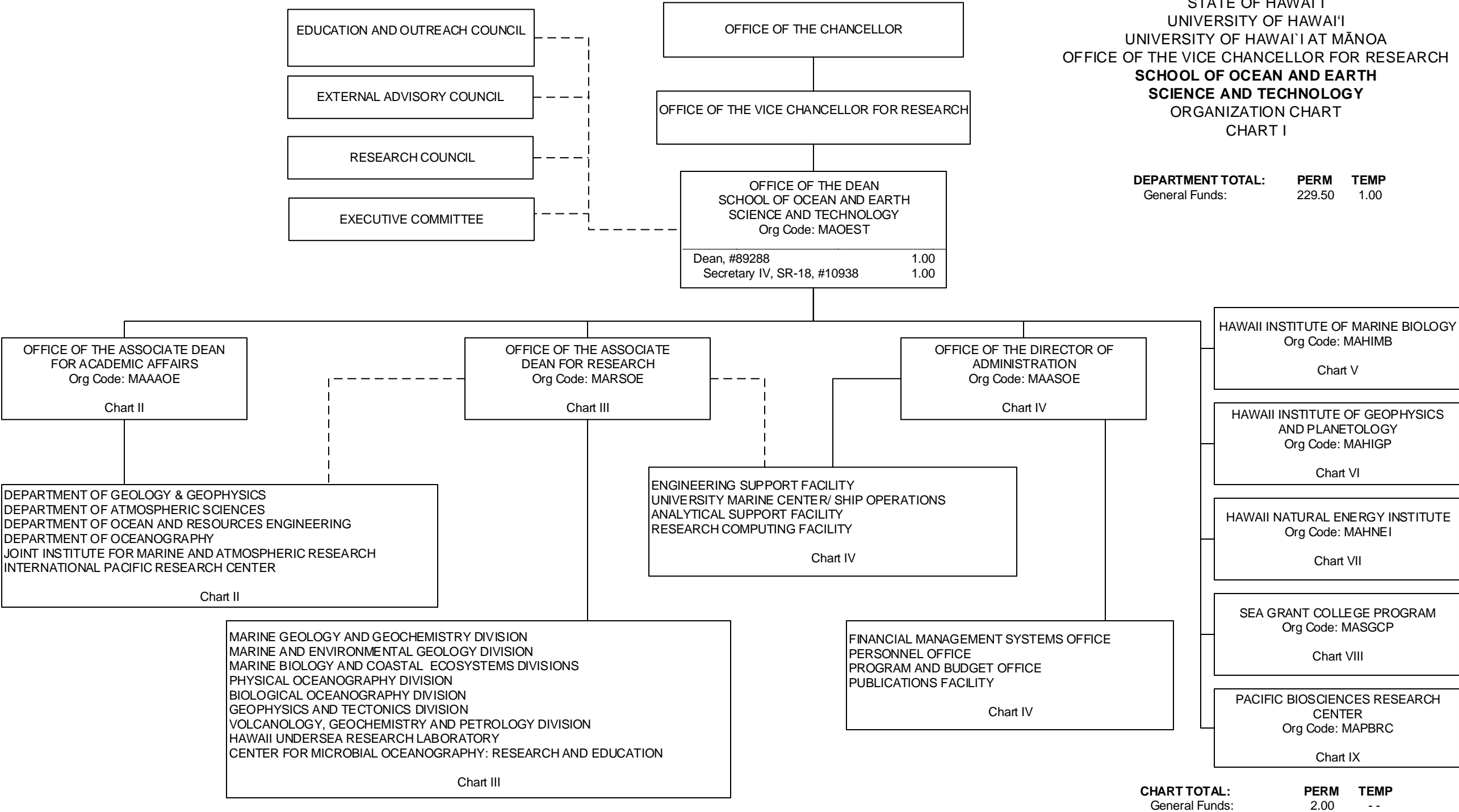
SCHOOL OF OCEAN AND EARTH

SCIENCE AND TECHNOLOGY

ORGANIZATION CHART

CHART I

DEPARTMENT TOTAL:	PERM	TEMP
General Funds:	229.50	1.00

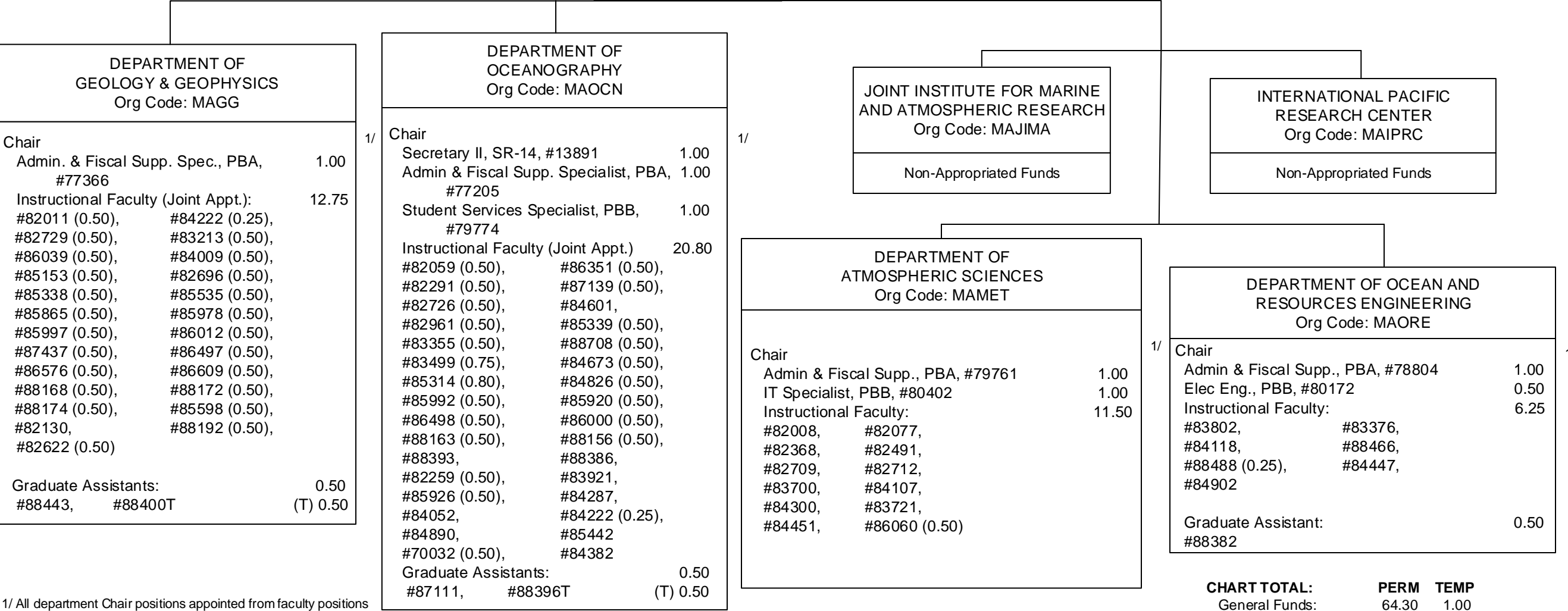


OFFICE OF THE DEAN  
SCHOOL OF OCEAN AND EARTH  
SCIENCE AND TECHNOLOGY

OFFICE OF THE ASSOCIATE DEAN FOR ACADEMIC AFFAIRS Org Code: MAAAOE	
Assoc. Dean, #89267	1.00
Admin & Fiscal Supp. Spec., PBA, #77722	1.00
Student Svcs Spec., PBB, #78897	1.00
Student Svcs Spec., PBA, #77286	1.00

STATE OF HAWAI'I  
UNIVERSITY OF HAWAI'I  
UNIVERSITY OF HAWAI'I AT MĀNOA  
OFFICE OF THE VICE CHANCELLOR FOR RESEARCH  
SCHOOL OF OCEAN AND EARTH  
SCIENCE AND TECHNOLOGY

OFFICE OF THE ASSOCIATE DEAN FOR  
ACADEMIC AFFAIRS  
ORGANIZATION CHART  
CHART II



OFFICE OF THE DEAN  
SCHOOL OF OCEAN AND EARTH SCIENCE  
AND TECHNOLOGY

STATE OF HAWAII  
UNIVERSITY OF HAWAII  
UNIVERSITY OF HAWAII AT MĀNOA  
OFFICE OF THE VICE CHANCELLOR FOR RESEARCH  
SCHOOL OF OCEAN AND EARTH  
SCIENCE AND TECHNOLOGY

OFFICE OF THE ASSOCIATE DEAN FOR RESEARCH  
ORGANIZATION CHART  
CHART III

OFFICE OF THE  
ASSOCIATE DEAN FOR RESEARCH  
Org Code: MARSOE

Assoc. Dean, #890531.00

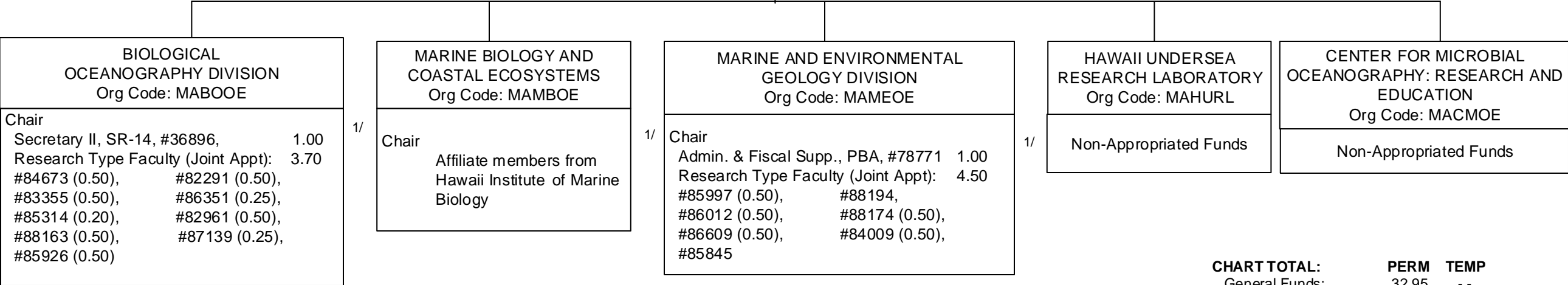
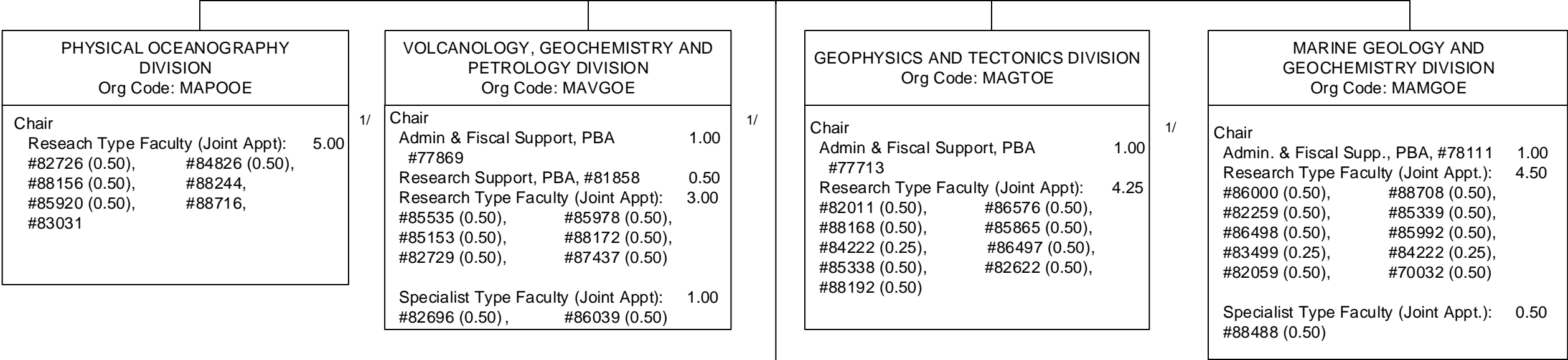


CHART TOTAL: PERM TEMP  
General Funds: 32.95 - -

1/ All department Chair positions appointed from faculty positions

STATE OF HAWAIʻI

UNIVERSITY OF HAWAIʻI

UNIVERSITY OF HAWAIʻI AT MĀNOA

OFFICE OF THE VICE CHANCELLOR FOR RESEARCH

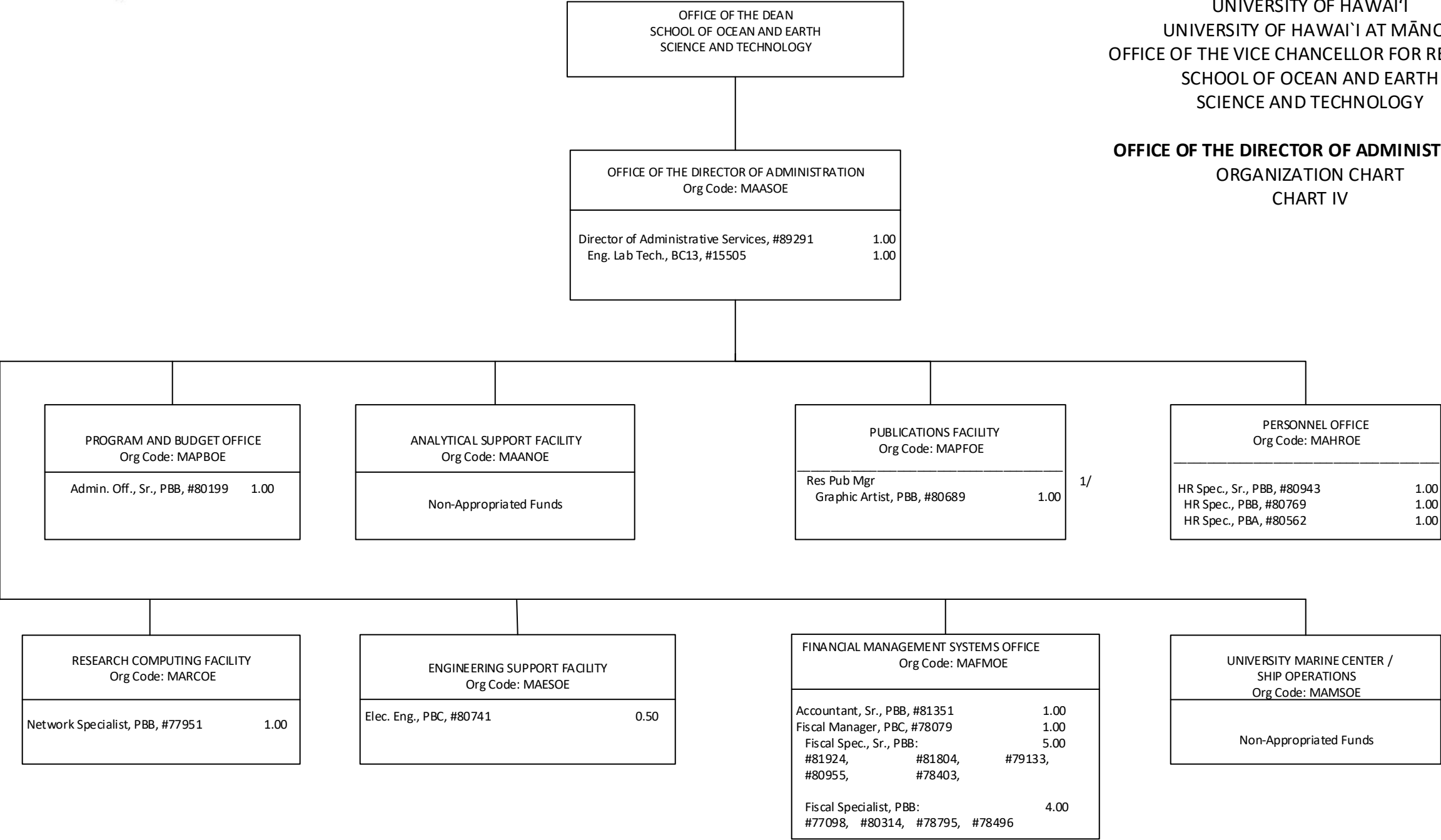
SCHOOL OF OCEAN AND EARTH

SCIENCE AND TECHNOLOGY

OFFICE OF THE DIRECTOR OF ADMINISTRATION

ORGANIZATION CHART

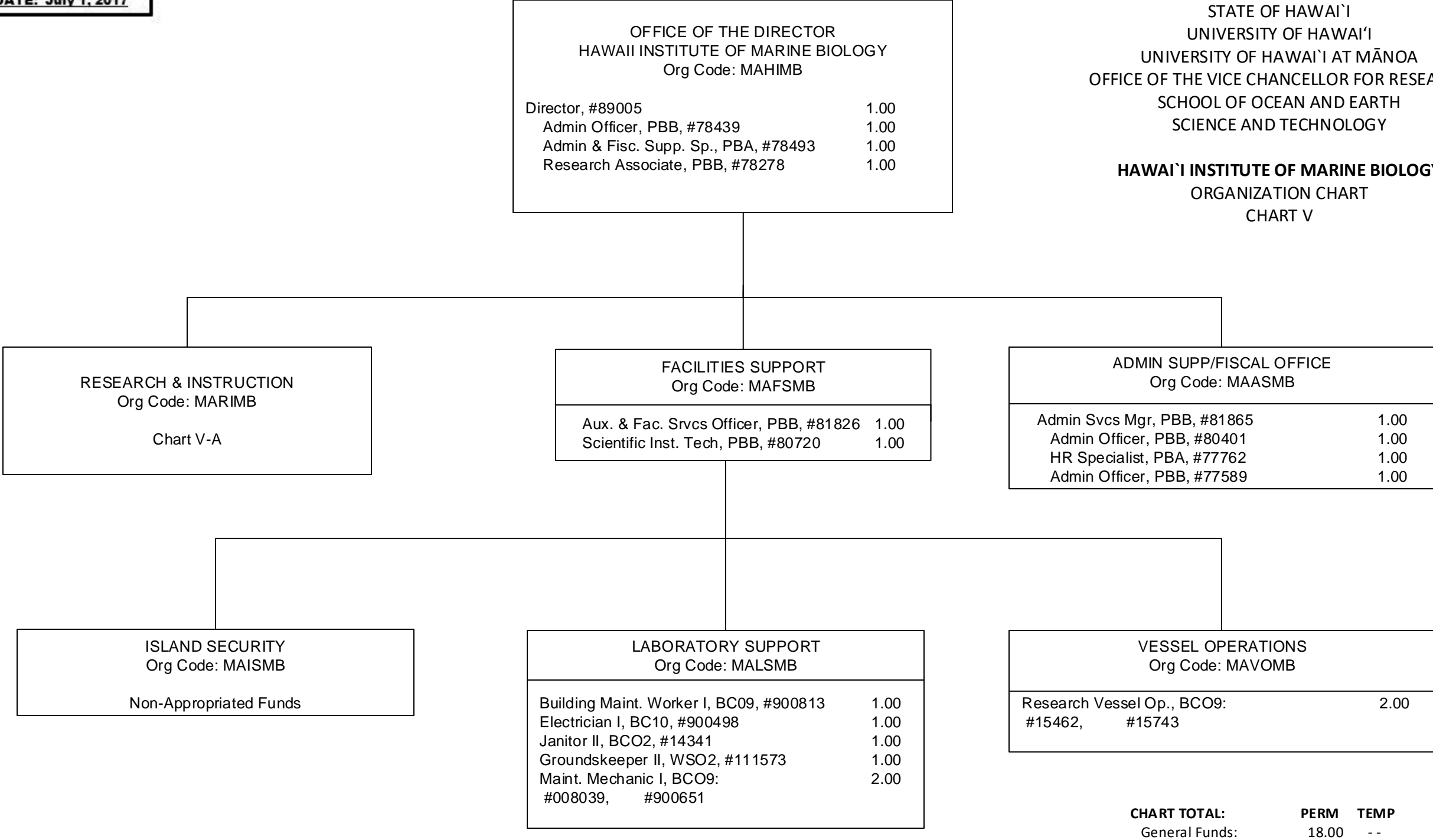
CHART IV



1/ Pending establishment of Res Pub Mgr in Publications Facility

STATE OF HAWAIʻI  
UNIVERSITY OF HAWAIʻI  
UNIVERSITY OF HAWAIʻI AT MĀNOA  
OFFICE OF THE VICE CHANCELLOR FOR RESEARCH  
SCHOOL OF OCEAN AND EARTH  
SCIENCE AND TECHNOLOGY

HAWAIʻI INSTITUTE OF MARINE BIOLOGY  
ORGANIZATION CHART  
CHART V



OFFICE OF THE DIRECTOR  
HAWAII INSTITUTE OF MARINE BIOLOGY

STATE OF HAWAIʻI  
UNIVERSITY OF HAWAIʻI  
UNIVERSITY OF HAWAIʻI AT MĀNOA  
OFFICE OF THE VICE CHANCELLOR FOR RESEARCH  
SCHOOL OF OCEAN AND EARTH  
SCIENCE AND TECHNOLOGY  
HAWAIʻI INSTITUTE OF MARINE BIOLOGY

RESEARCH & INSTRUCTION  
ORGANIZATION CHART  
CHART V-A

RESEARCH & INSTRUCTION  
Org Code: MARIMB

Specialist Type Faculty: 3.00  
#88730, #86035,  
#86043

AQUACULTURE  
Org Code: MAAQMB

Non-Appropriated Funds

PLANKTON INVESTIGATIONS  
Org Code: MAPIMB

Research Type Faculty: 1.00  
#82166

FISHERIES INVESTIGATIONS  
Org Code: MAFIMB

Research Type Faculty: 2.00  
#86051, #88167

BEHAVIORAL STUDIES  
Org Code: MABSMB

Research Type Faculty: 1.00  
#86024

BIOCHEMICAL STUDIES  
Org Code: MABCMB

Research Type Faculty: 4.00  
#84260, #82717,  
#82595, #84080

SUMMER INSTITUTE  
Org Code: MASIMB

Non-Appropriated Funds

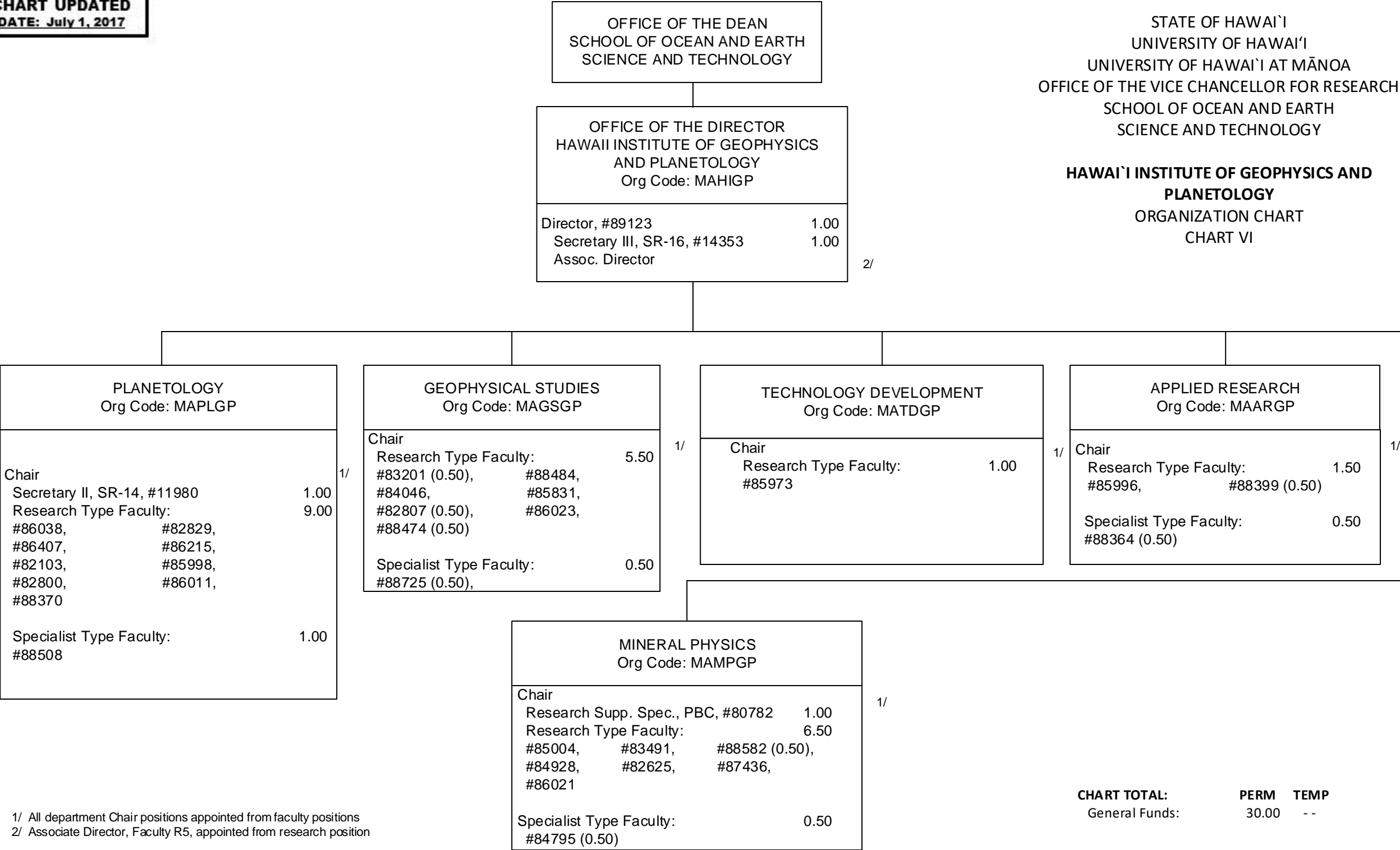
CORAL ECOLOGY  
Org Code: MACEMB

Research Type Faculty: 3.00  
#86041, #86036,  
#70112

Graduate Assistant: 0.50  
#88206

FISH ENDOCRINOLOGY  
Org Code: MAFEMB

Research Type Faculty: 1.00  
#84127

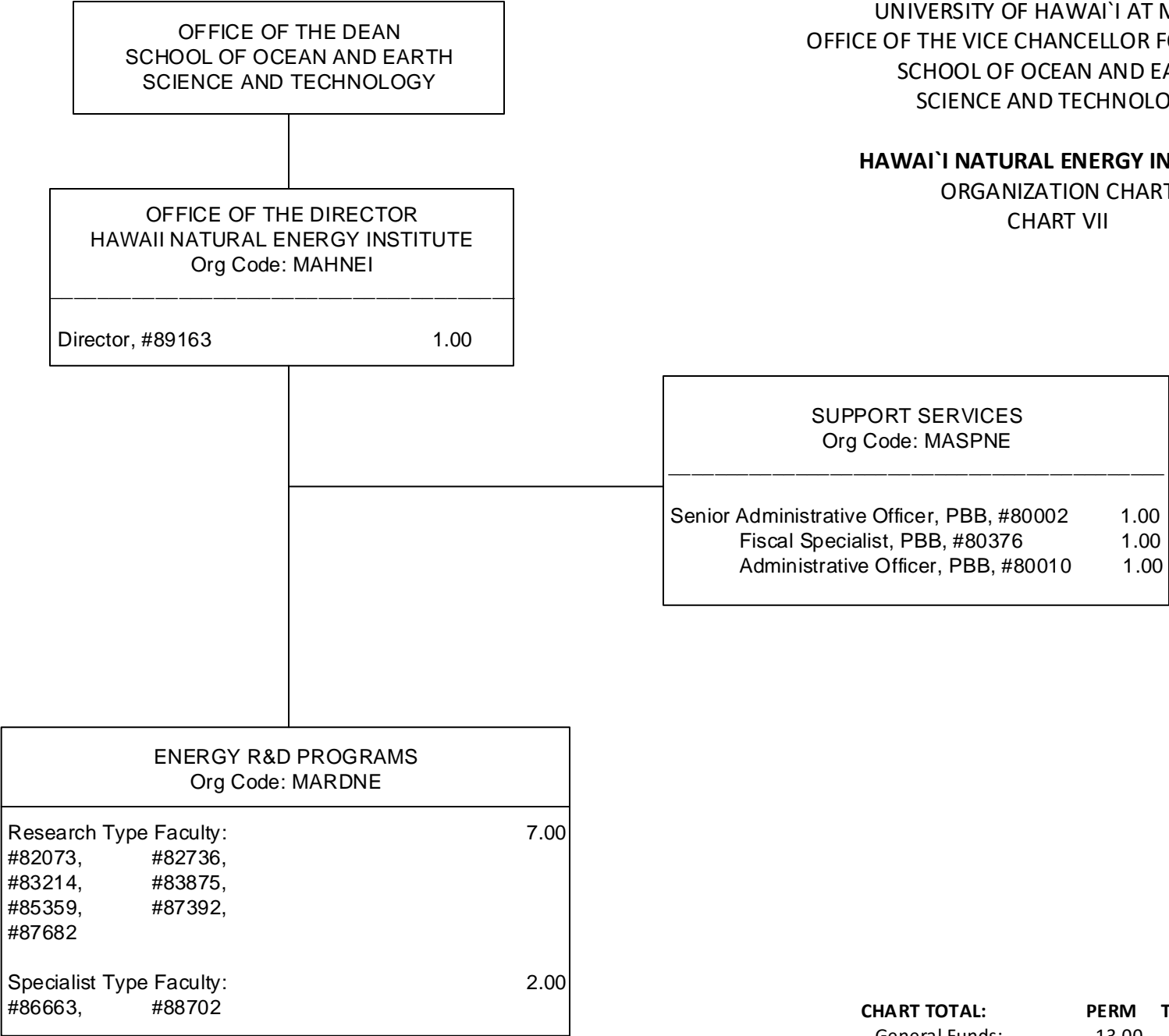


1/ All department Chair positions appointed from faculty positions

2/ Associate Director, Faculty R5, appointed from research position

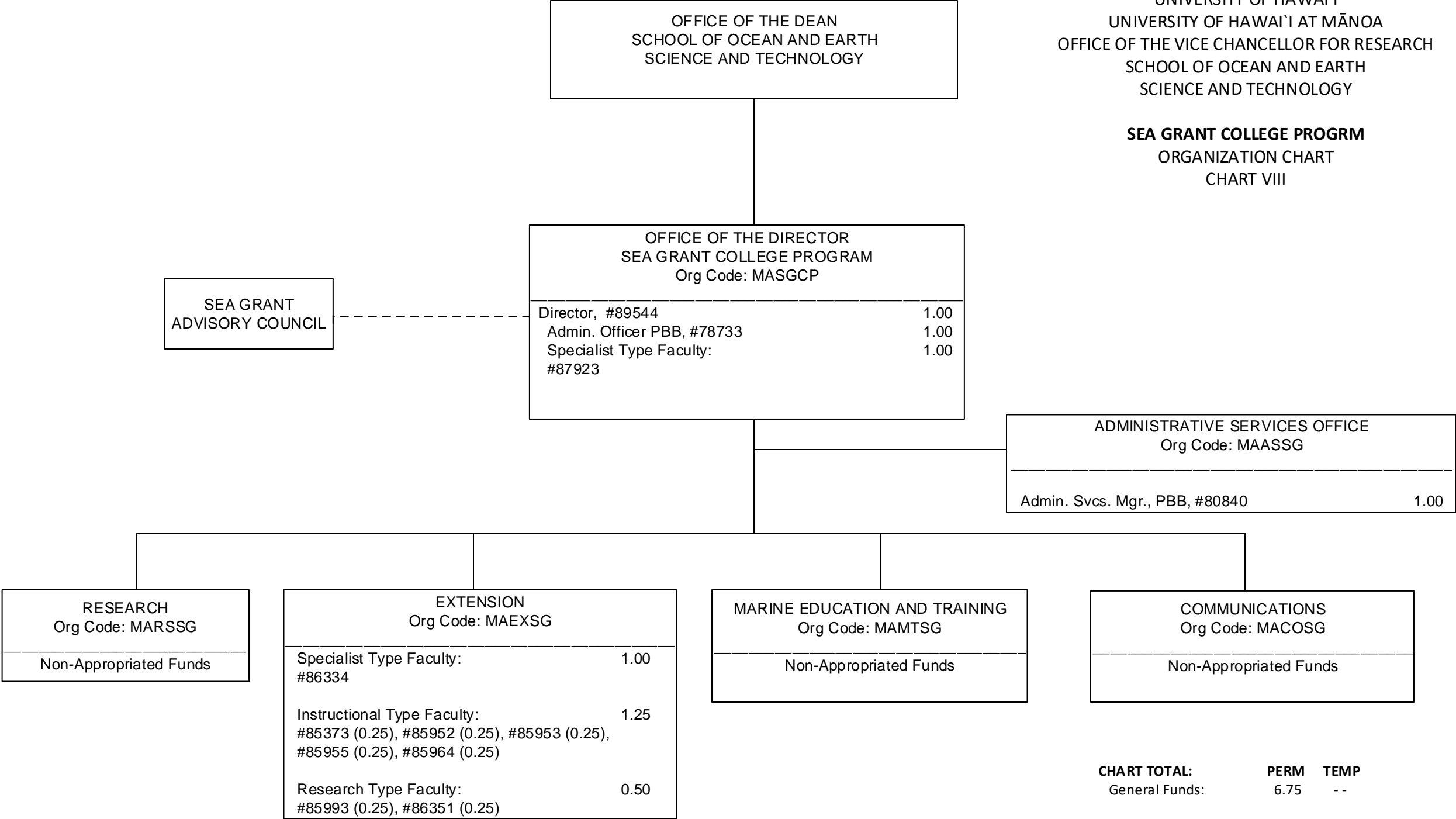
STATE OF HAWAIʻI  
UNIVERSITY OF HAWAIʻI  
UNIVERSITY OF HAWAIʻI AT MĀNOA  
OFFICE OF THE VICE CHANCELLOR FOR RESEARCH  
SCHOOL OF OCEAN AND EARTH  
SCIENCE AND TECHNOLOGY

HAWAIʻI NATURAL ENERGY INSTITUTE  
ORGANIZATION CHART  
CHART VII





SEA GRANT COLLEGE PROGRAM  
ORGANIZATION CHART  
CHART VIII



OFFICE OF THE DEAN  
SCHOOL OF OCEAN AND EARTH SCIENCE AND TECHNOLOGY

STATE OF HAWAI'I  
UNIVERSITY OF HAWAI'I  
UNIVERSITY OF HAWAI'I AT MĀNOA  
OFFICE OF THE VICE CHANCELLOR FOR RESEARCH  
SCHOOL OF OCEAN AND EARTH  
SCIENCE AND TECHNOLOGY

PACIFIC BIOSCIENCES RESEARCH CENTER  
ORGANIZATION CHART  
CHART IX

OFFICE OF THE DIRECTOR PACIFIC BIOSCIENCES RESEARCH CENTER Org Code: MAPBRC		
Director, #89024		1.00
Operations Coordinator, PBB, #81906		1.00

ADMINISTRATIVE & SUPPORT SERVICES Org Code: MAASPB		
Fiscal Specialist, PBB, #80198		1.00
Admin & Fiscal Support Sp, PBA, #81853		1.00
Human Resources Sp, PBB, #81957		1.00
Fiscal Specialist, PBB, #77462		1.00
Fiscal Specialist, PBB, #80718		1.00

RESEARCH DIVISION Org Code: MARSPB		
Instructional Faculty:		3.00
#82826,      #86178(0.50),      #86180(0.50), #83295		
Research Type Faculty:		7.50
#82743,      #83789,      #83868 #86170,      #86197,      #86201 #87490,      #82659(0.50)		
Specialist Type Faculty:		2.00
#86185,      #86186		
IT Specialist, PBB, #80742		1.00
Marine Laboratory Supervisor, PBB, #80753		1.00
Research Associate, PBC, #78788		1.00
Research Associate, PBA #80956,      #81766		2.00
Administrative Officer, PBB, #78497		1.00
Secretary II, SR-14, #15262,      #15464		2.00