

STATE OF HAWAII
UNIVERSITY OF HAWAII
UNIVERSITY OF HAWAII AT MANOA
OFFICE OF THE VICE CHANCELLOR FOR ACADEMIC AFFAIRS
UNIVERSITY OF HAWAII PRESS
ORGANIZATIONAL CHART
CHART I

DEPARTMENT TOTAL:	PERM	TEMP
General Funds:	9.00	--
Revolving Funds (W):	8.00	--

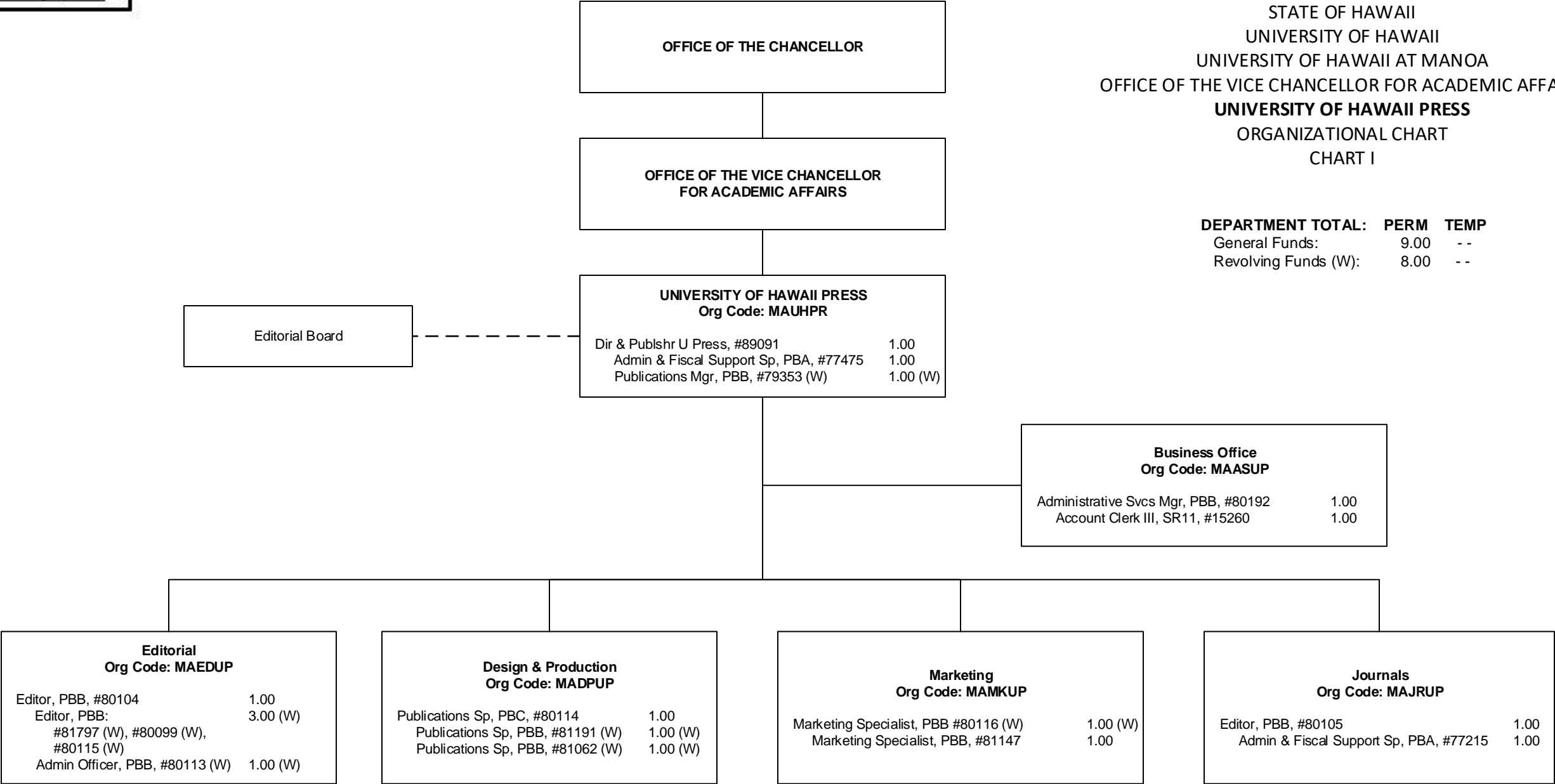


CHART TOTAL:	PERM	TEMP
General Funds:	9.00	--
Revolving Funds (W):	8.00	--