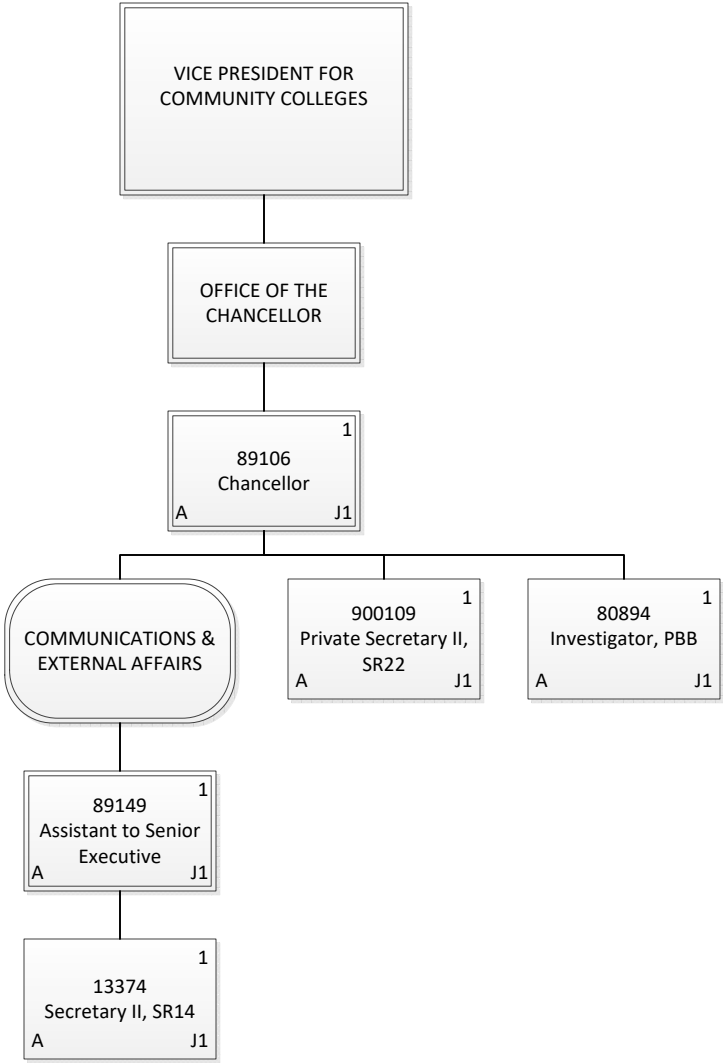


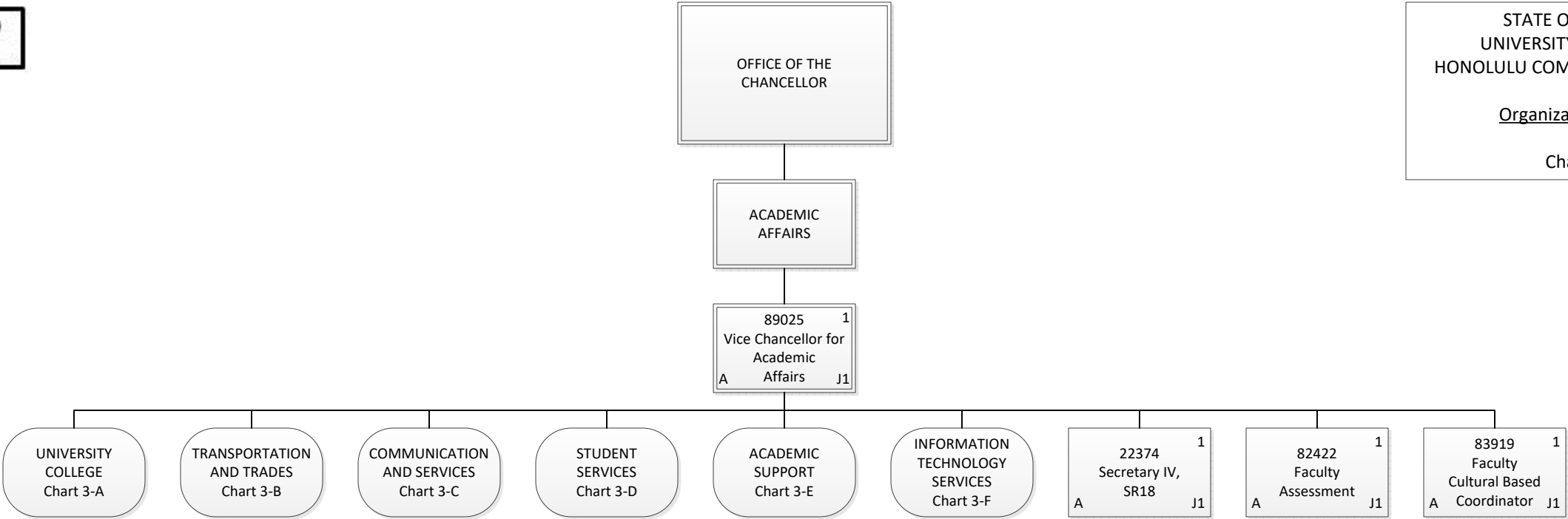
Organization Chart

Chart 1

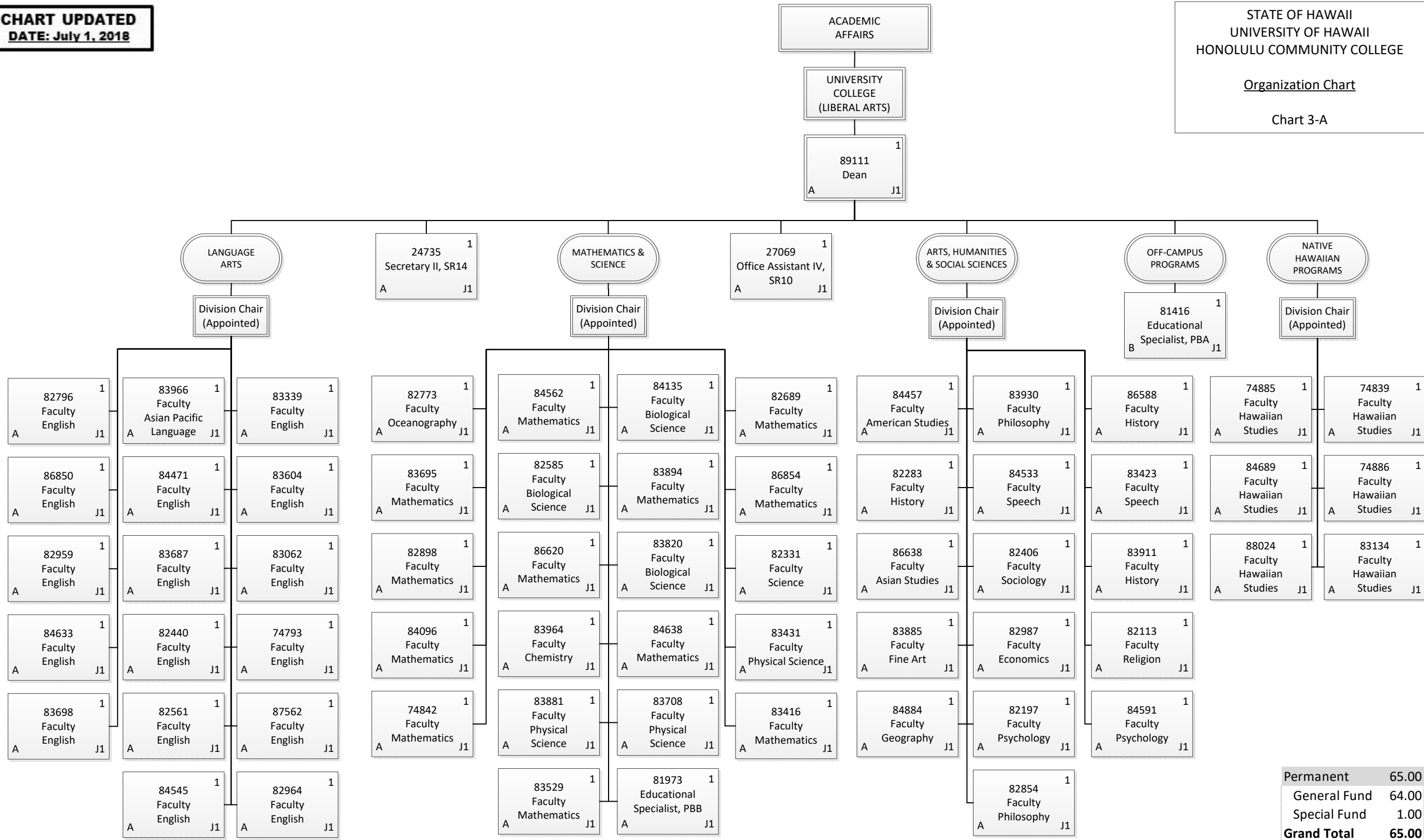
Permanent	330.00
General Fund	325.00
Special Fund	5.00
Temporary	5.00
General Fund	5.00
Grand Total	335.00



Permanent	5.00
General Fund	5.00
Grand Total	5.00



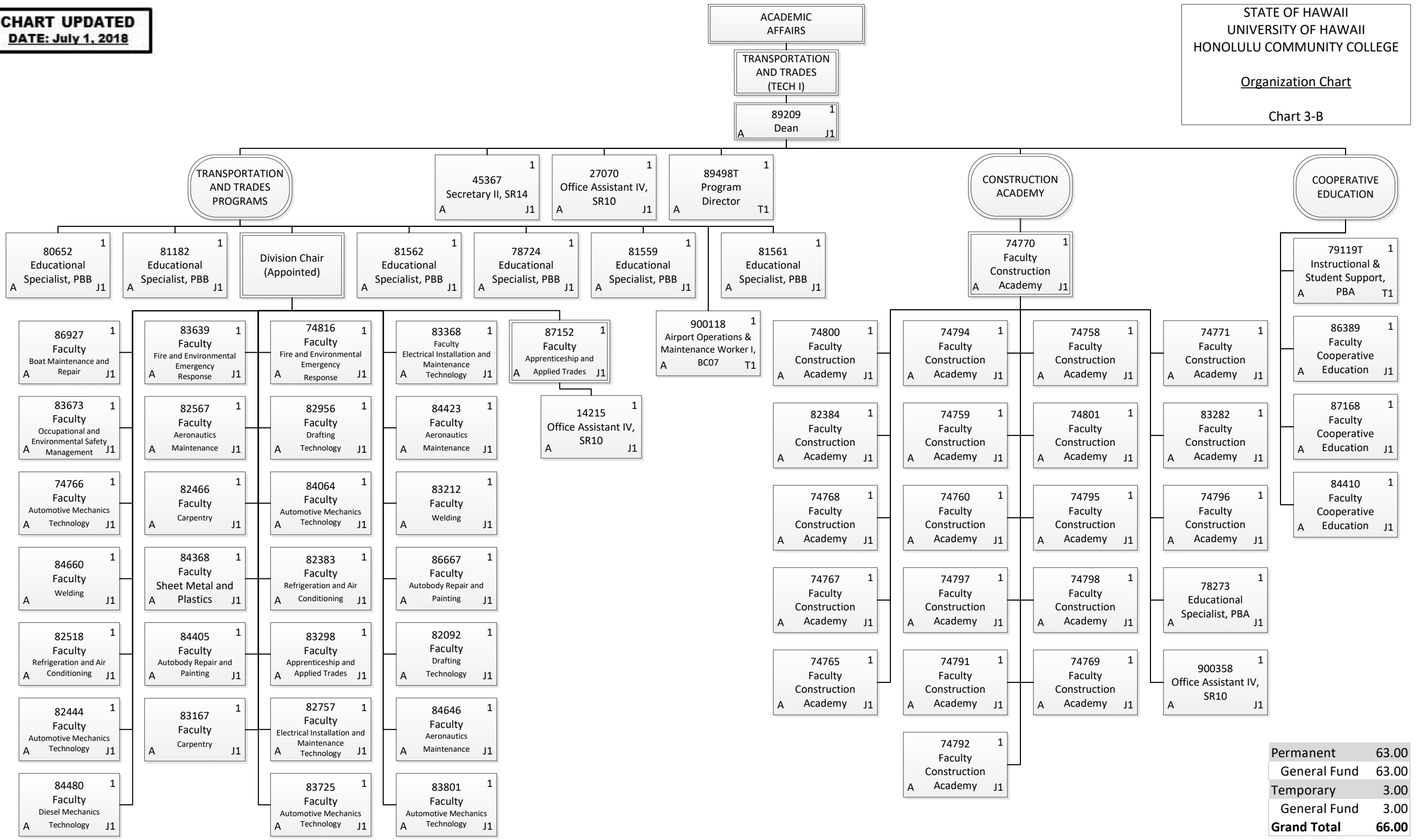
Permanent	4.00
General Fund	4.00
Grand Total	4.00

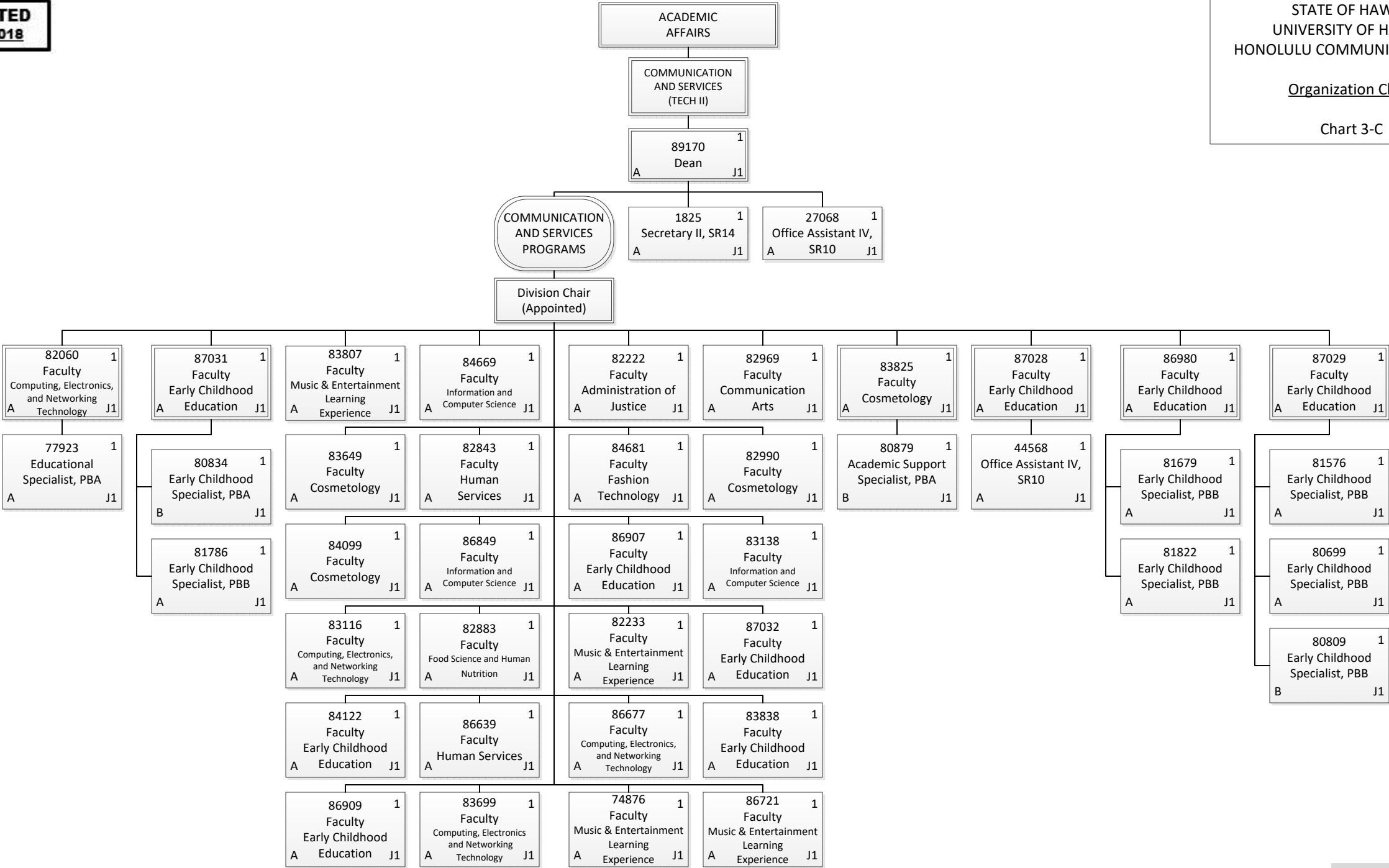


Permanent	65.00
General Fund	64.00
Special Fund	1.00
Grand Total	65.00

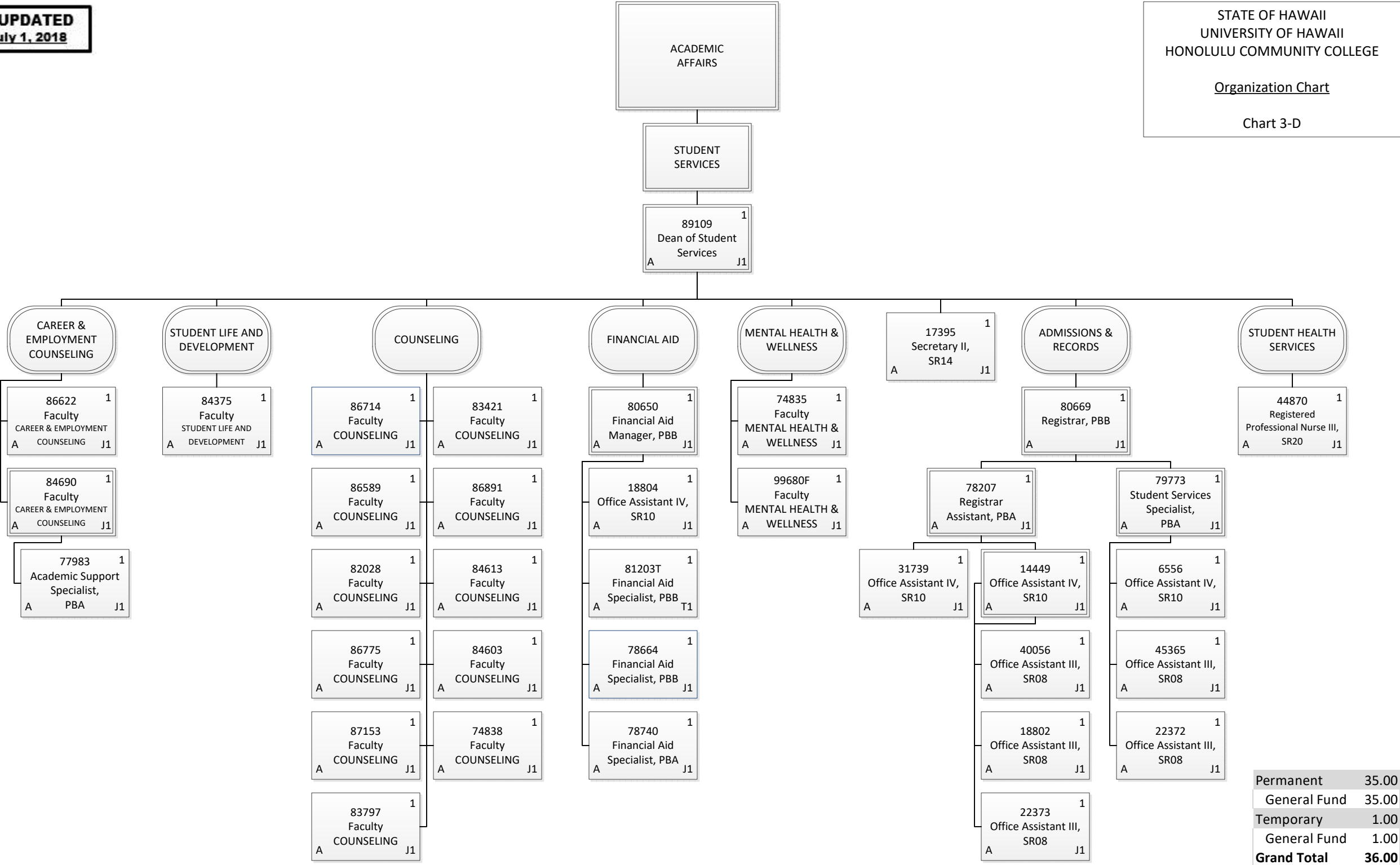
Organization Chart

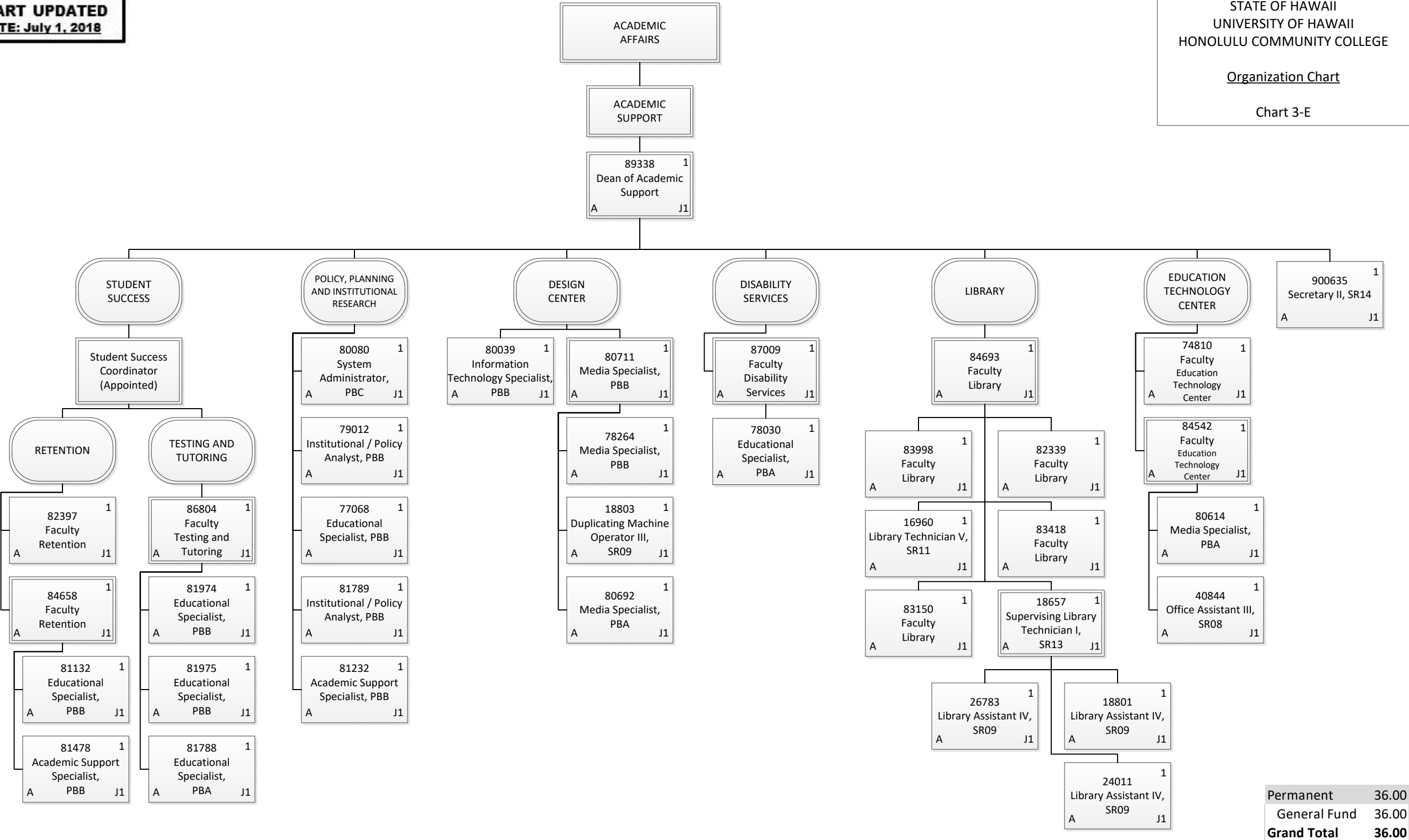
Chart 3-B

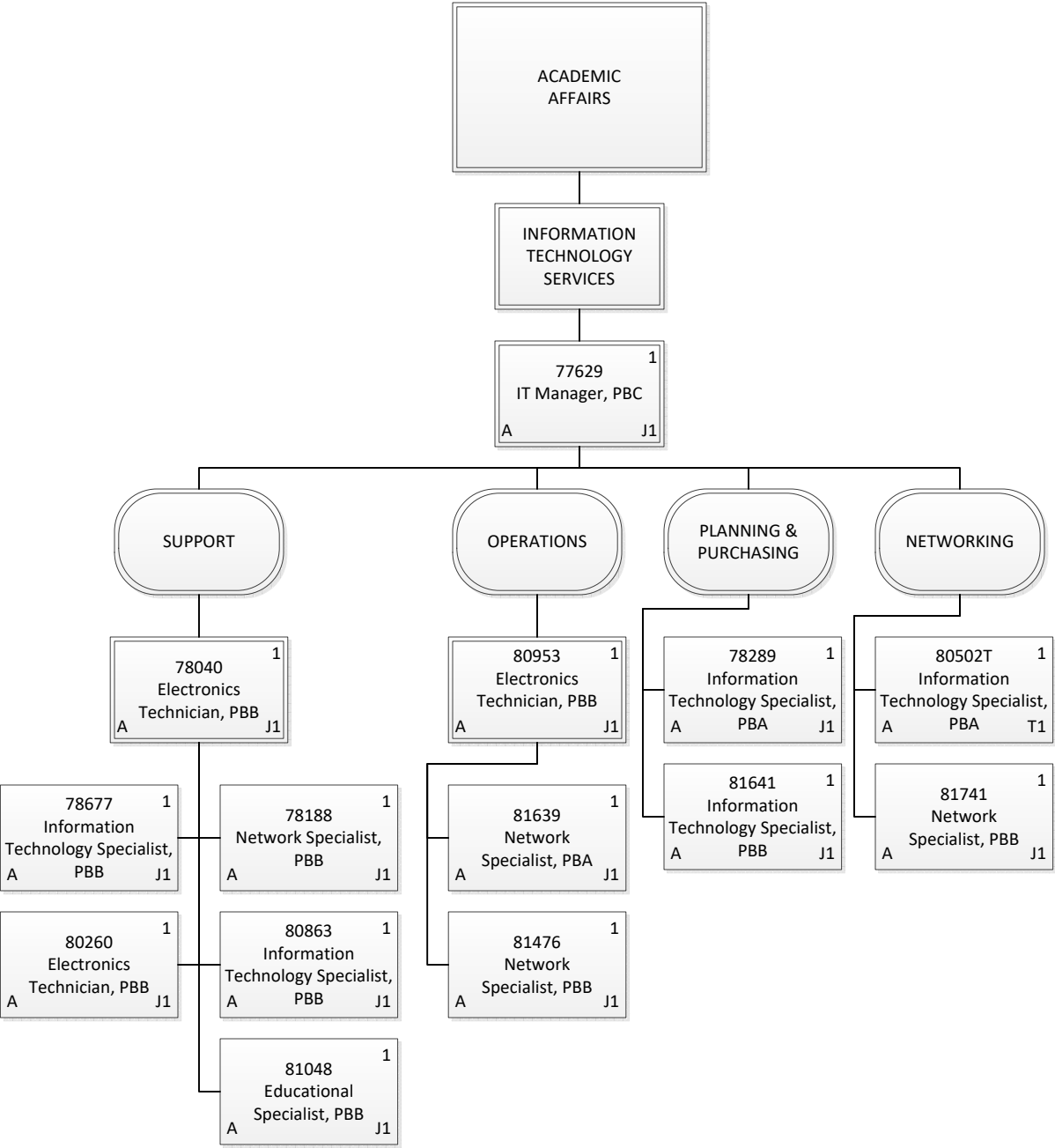




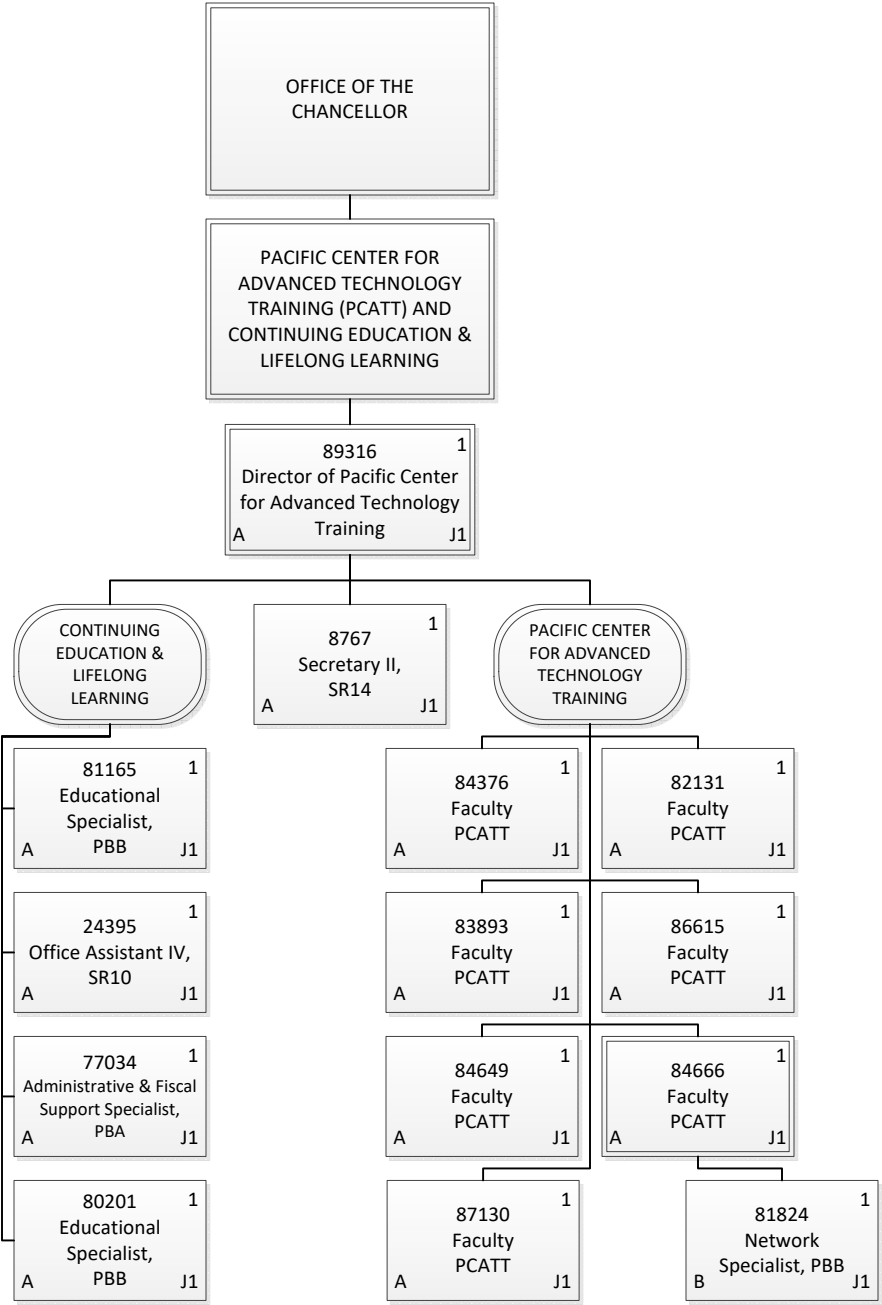
Permanent	43.00
General Fund	40.00
Special Fund	3.00
Grand Total	43.00



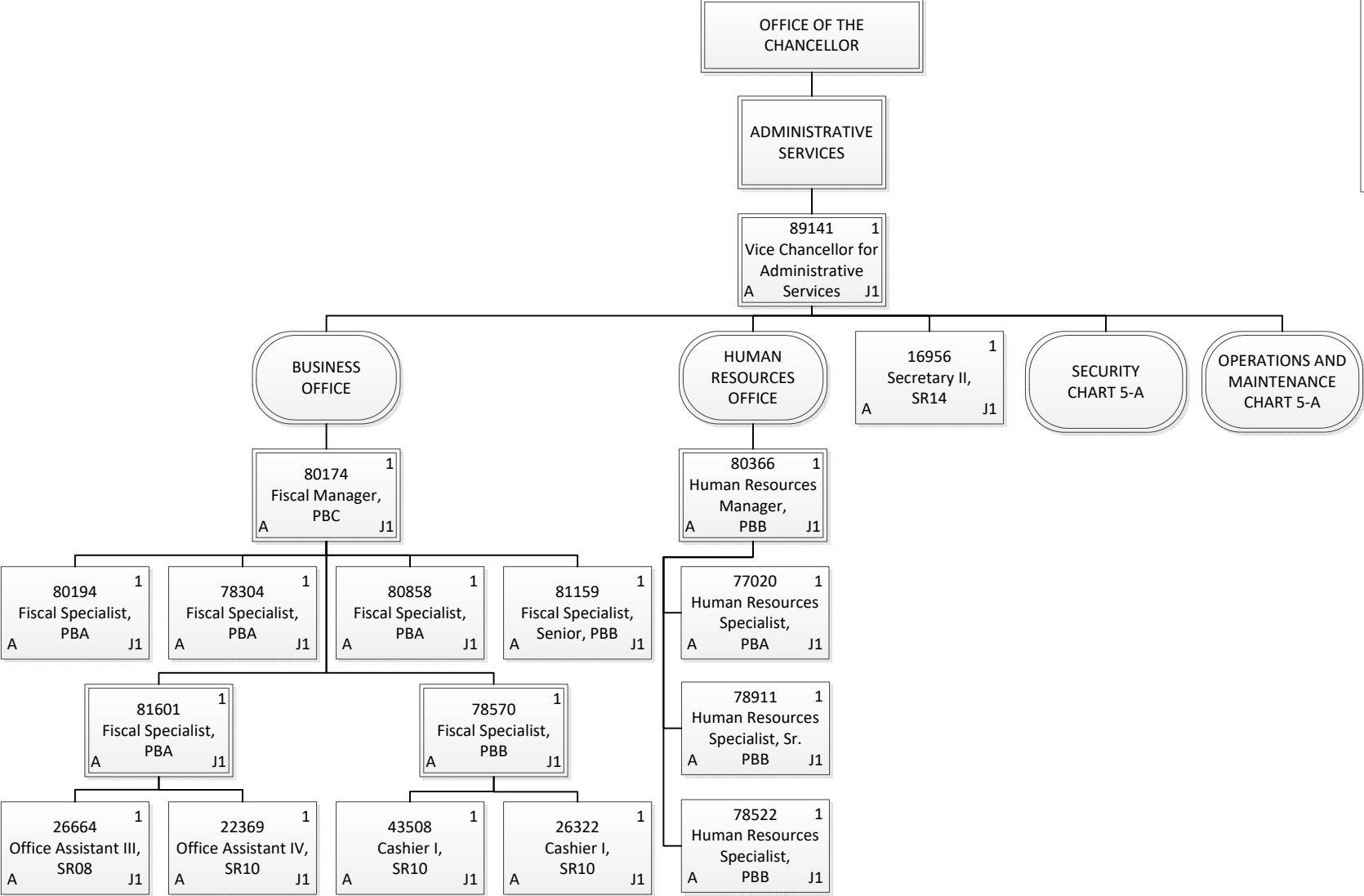




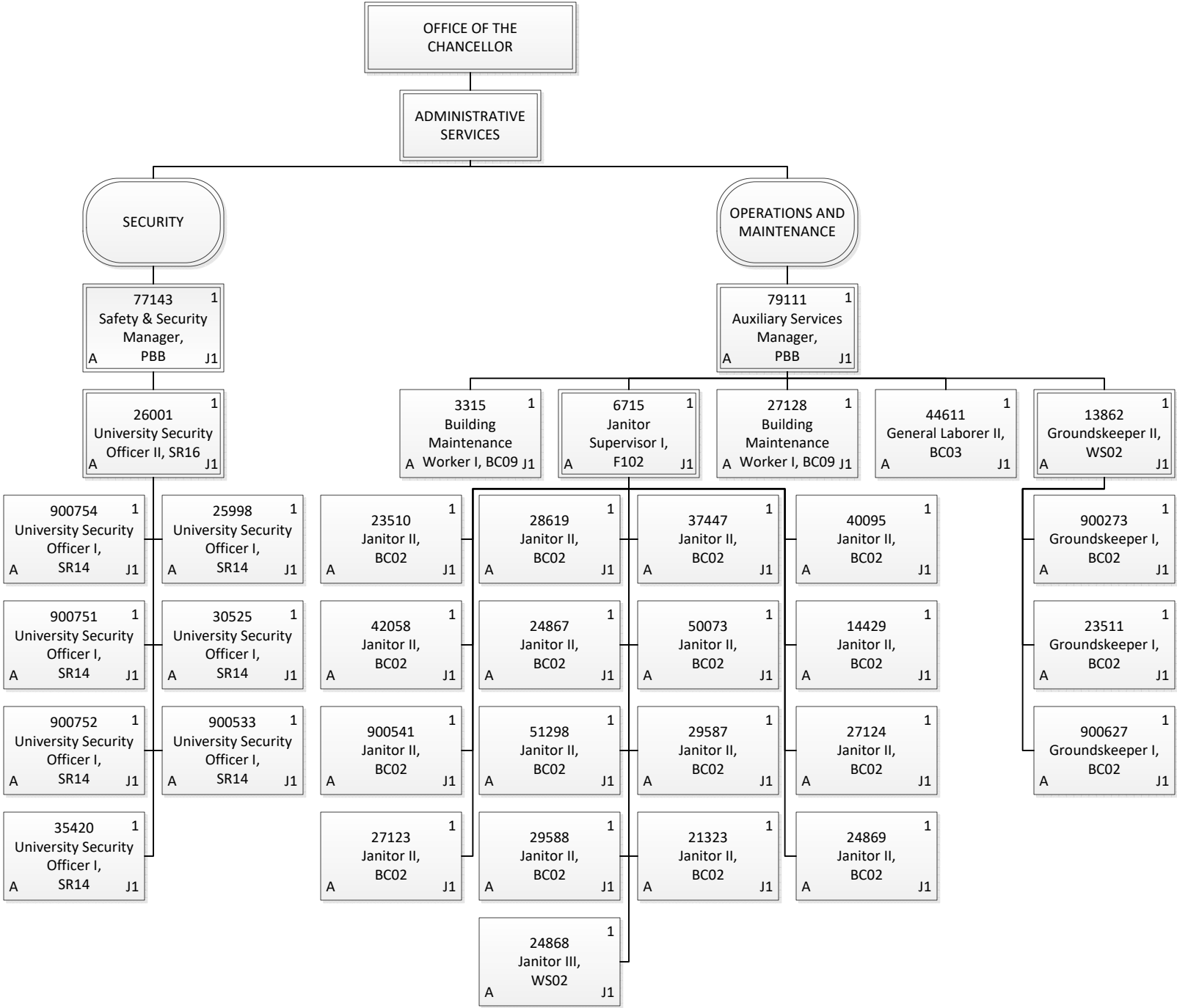
Permanent	13.00
General Fund	13.00
Temporary	1.00
General Fund	1.00
Grand Total	14.00



Permanent	14.00
General Fund	13.00
Special Fund	1.00
Grand Total	14.00



Permanent	17.00
General Fund	17.00
Grand Total	17.00



Permanent	35.00
General Fund	35.00
Grand Total	35.00