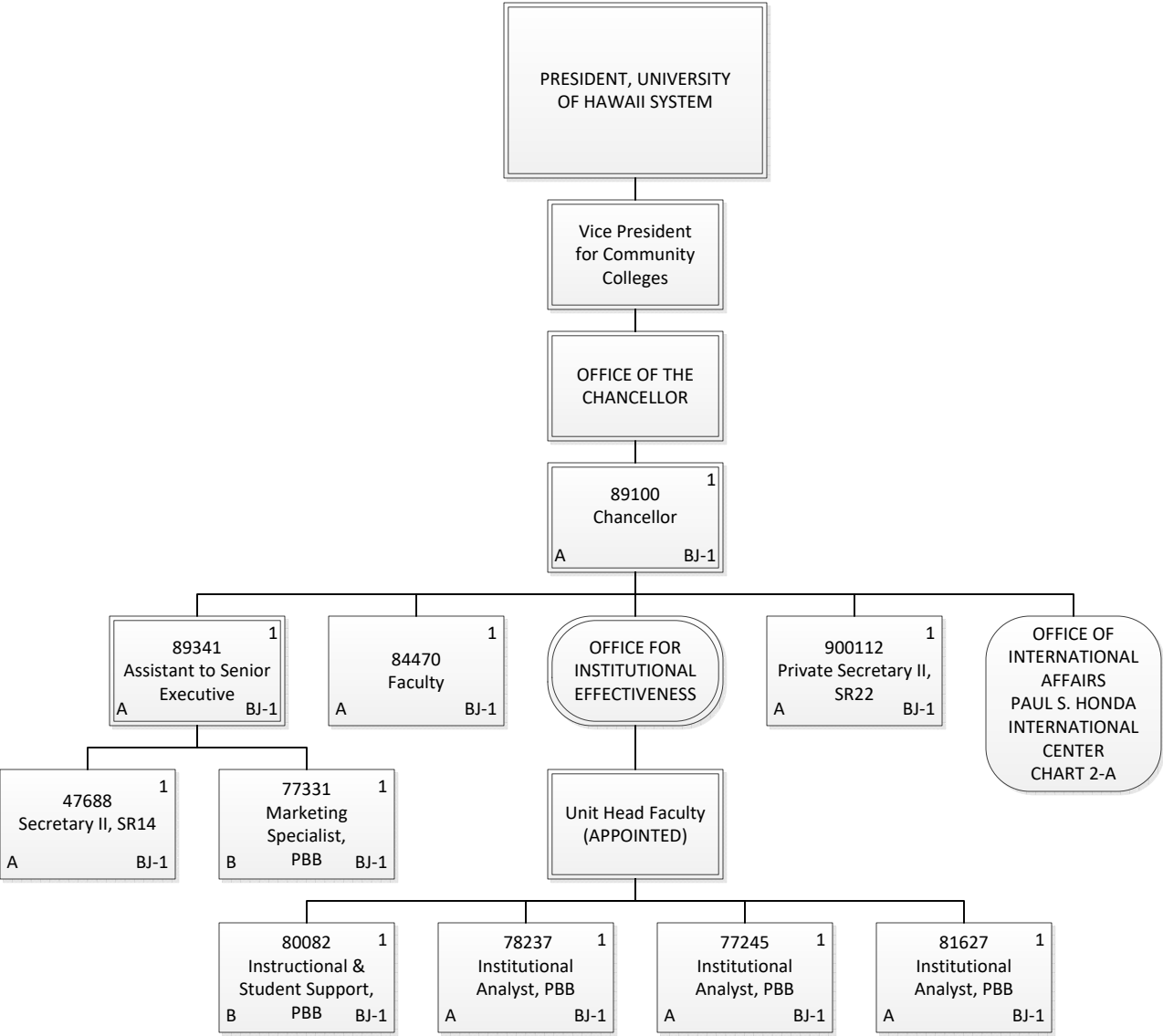


Permanent	410.00
General Funds	395.00
Special Funds	15.00
Temporary	29.00
General Funds	29.00
Grand Total	439.00



Permanent	10.00
General Funds	8.00
Special Funds	2.00
Grand Total	10.00

OFFICE OF THE CHANCELLOR

OFFICE OF  
INTERNATIONAL  
AFFAIRS  
PAUL S. HONDA  
INTERNATIONAL  
CENTER

Unit Head Faculty  
(APPOINTED)

827761  
Faculty  
B BJ-1

837451  
Faculty  
A BJ-1

814551  
Academic Support,  
PBA BJ-1  
B

789671  
Educational  
Specialist, PBB BJ-1  
A

87611T1  
Faculty  
A BT-1

77229T1  
Educational  
Specialist, PBB BT-1  
A

88035T1  
Faculty  
A BT-1

782481  
Educational  
Specialist, PBB BJ-1  
A

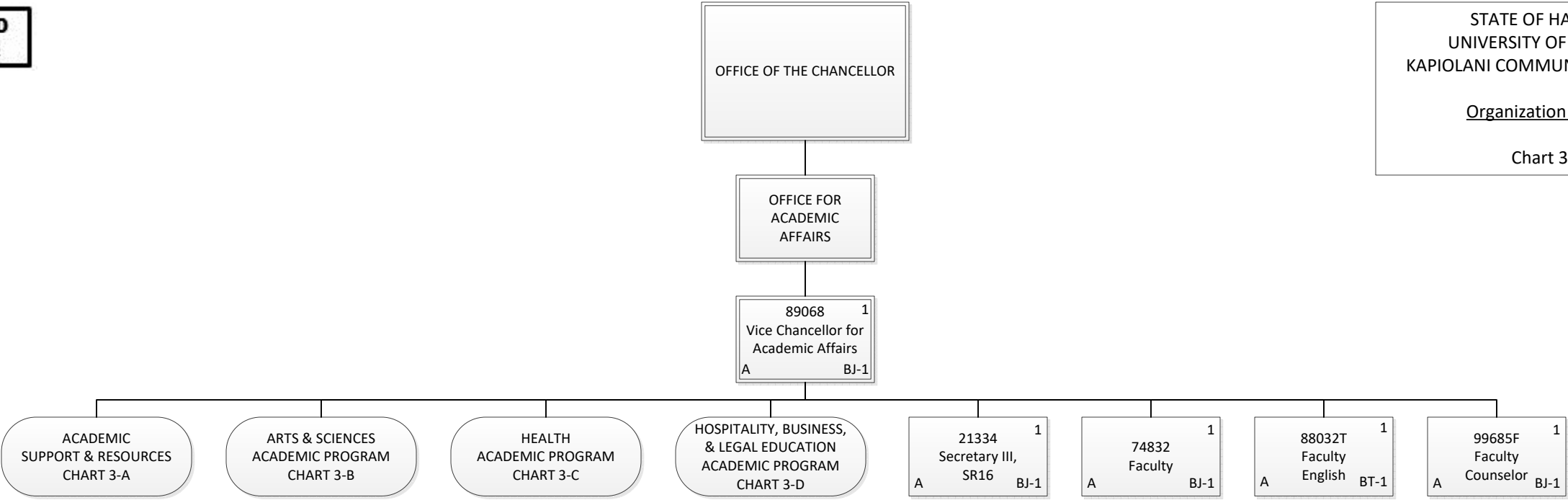
807781  
Educational  
Specialist,  
PBB BJ-1  
B

79714T1  
Educational  
Specialist, PBB BT-1  
A

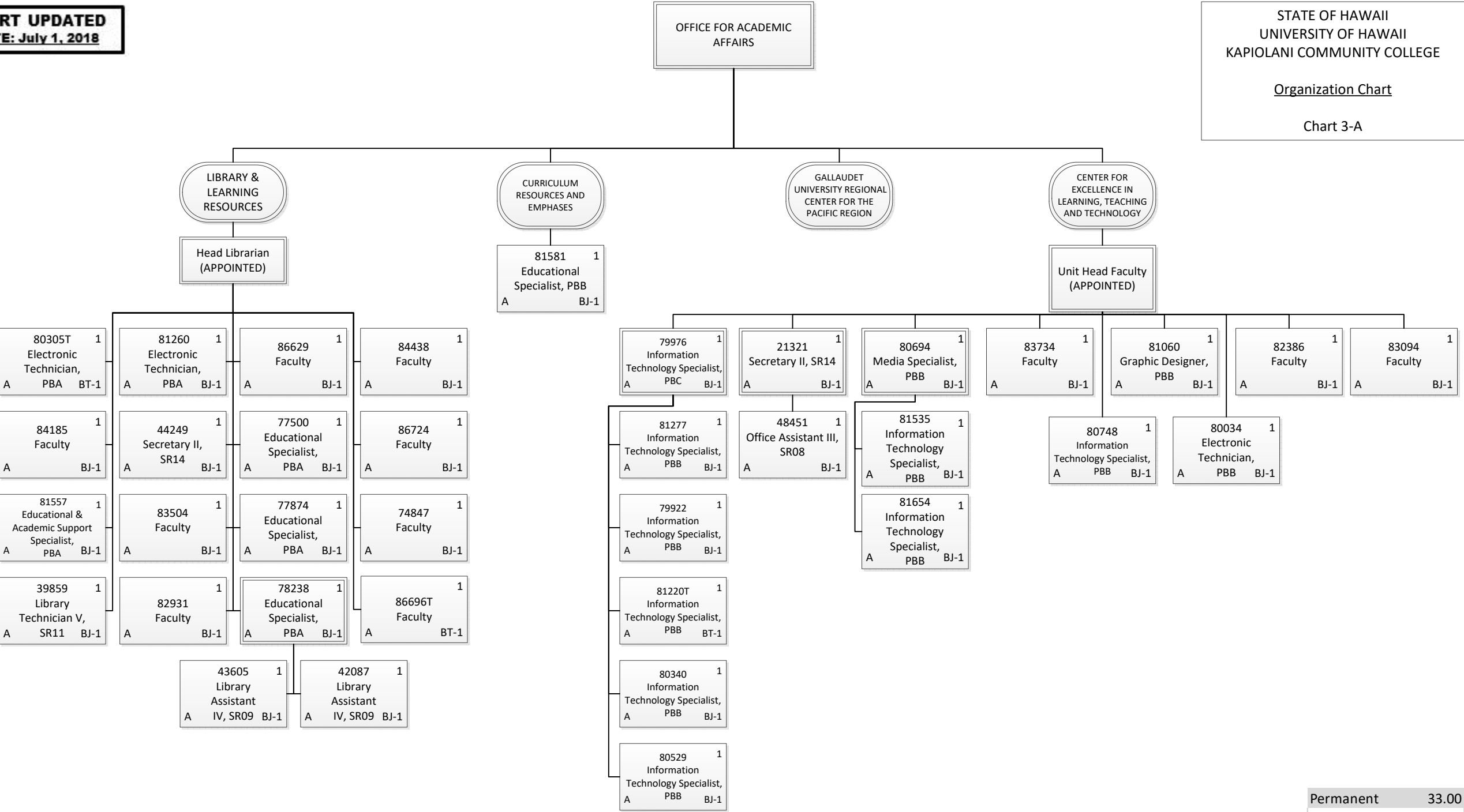
Permanent	6.00
General Funds	3.00
Special Funds	3.00
Temporary	4.00
General Funds	4.00
Grand Total	10.00

Organization Chart

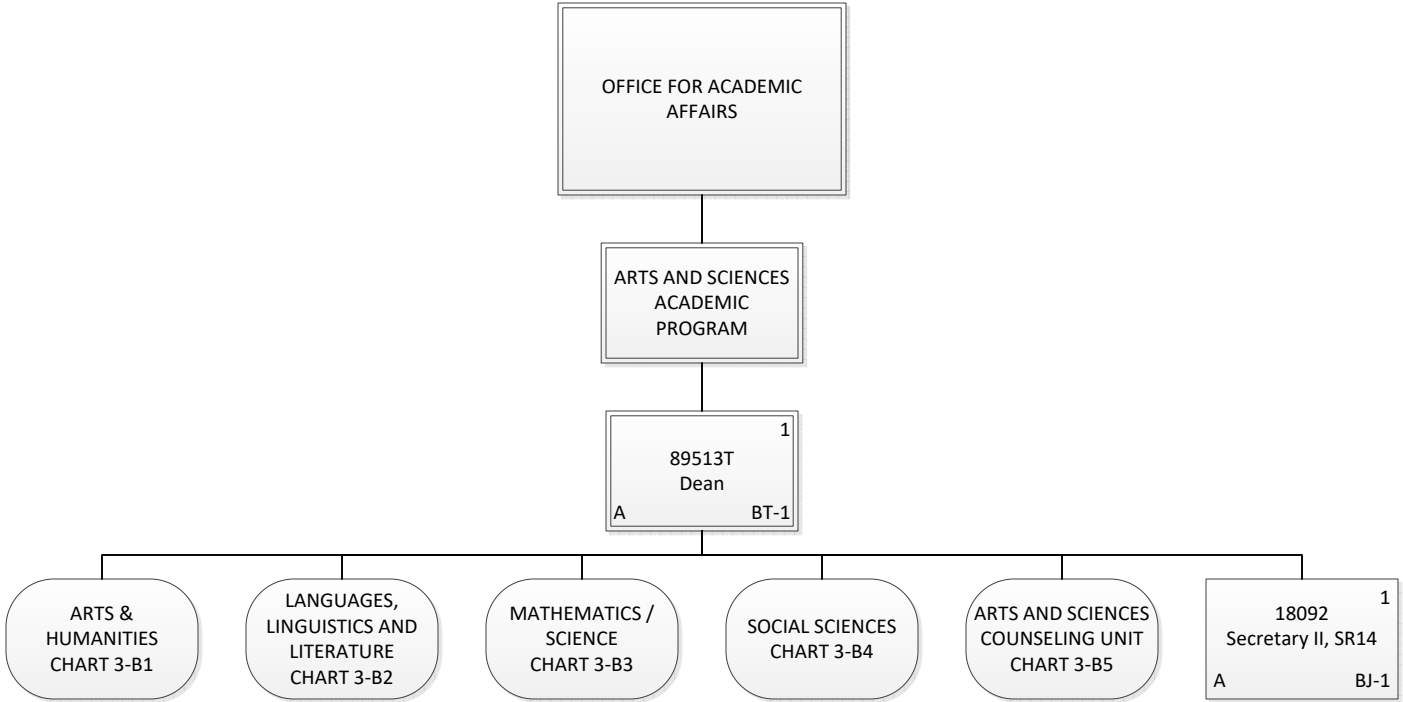
Chart 3



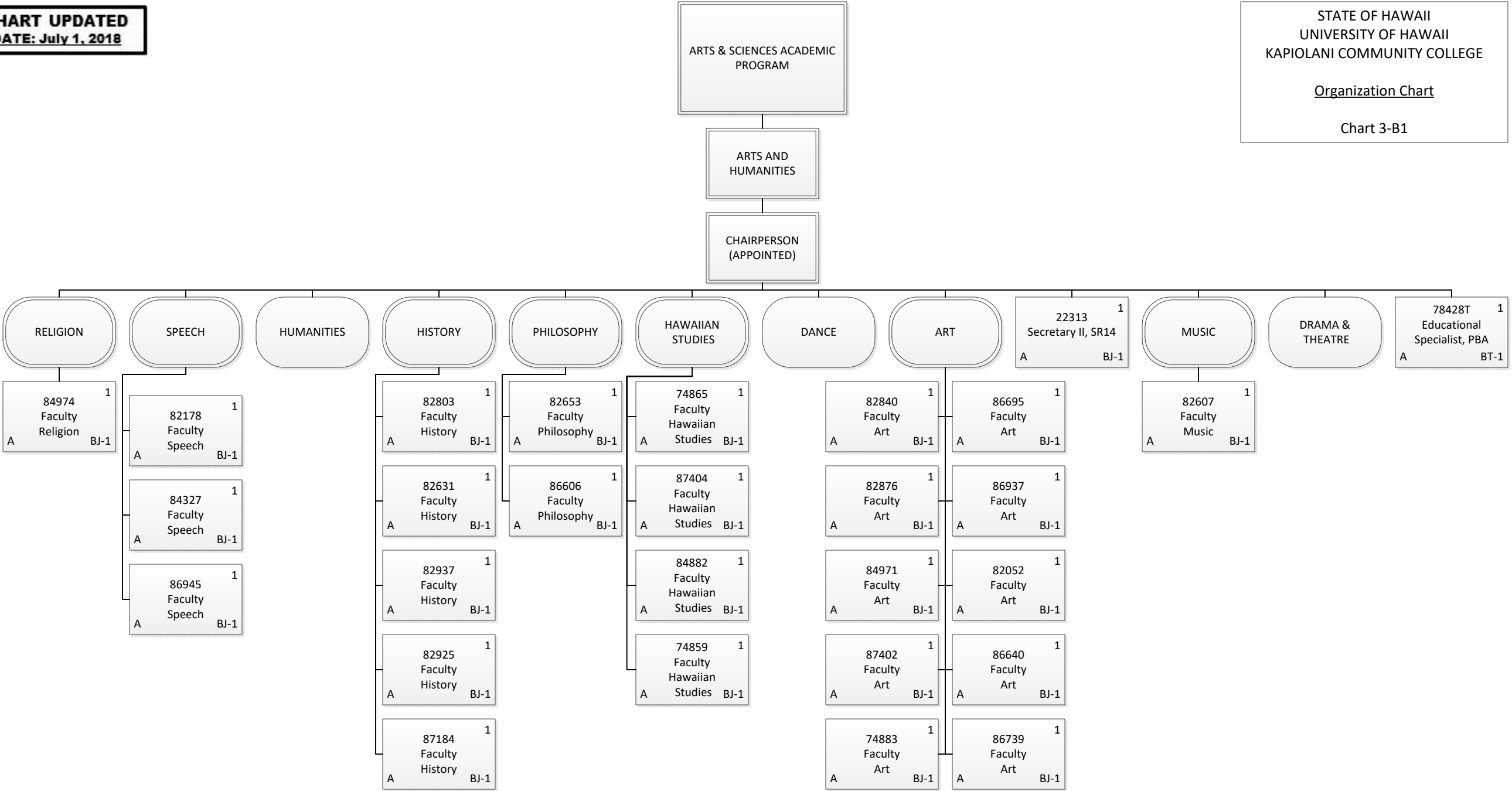
Permanent	4.00
General Funds	4.00
Temporary	1.00
General Funds	1.00
Grand Total	5.00



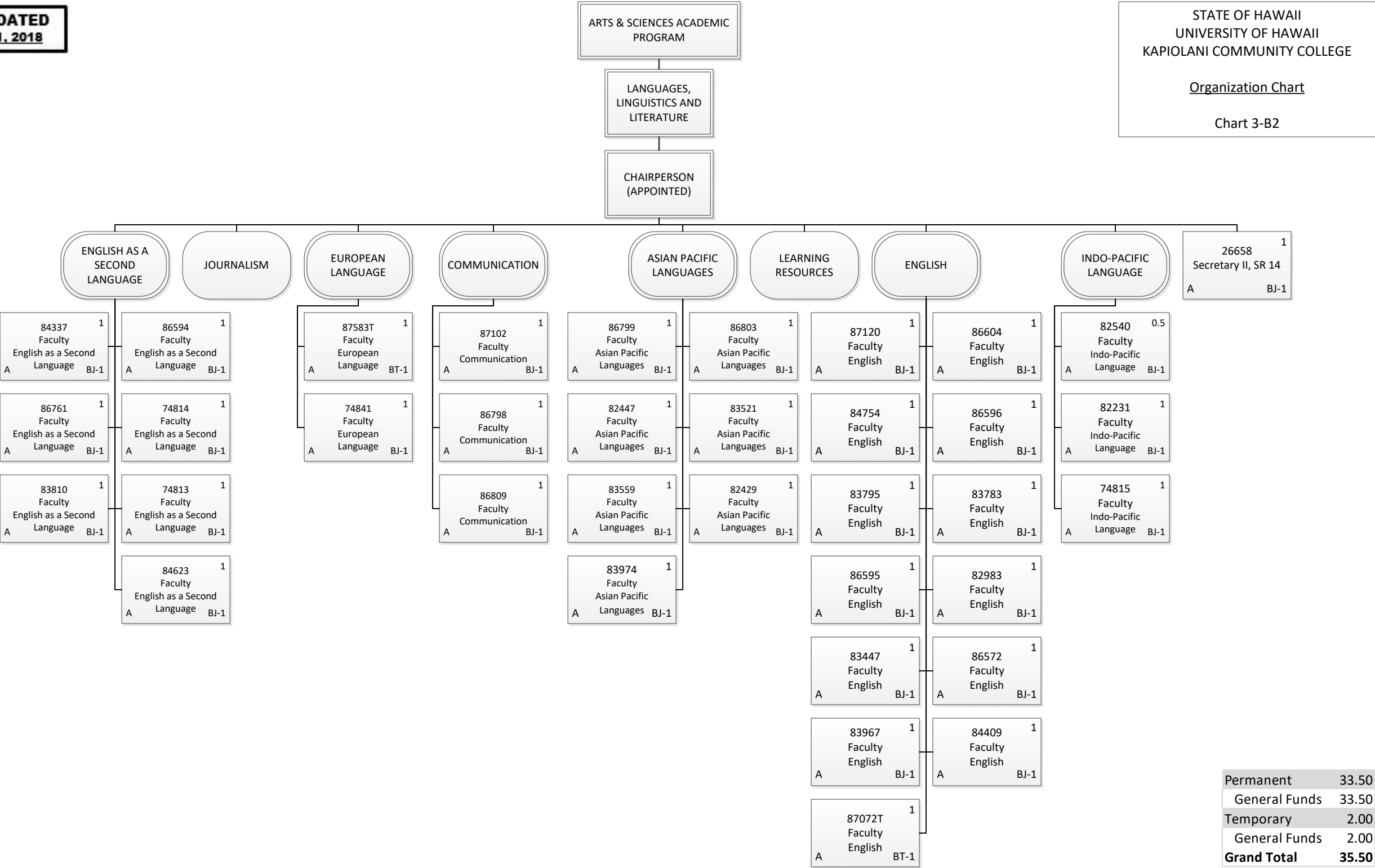
Permanent	33.00
General Funds	33.00
Temporary	3.00
General Funds	3.00
Grand Total	36.00



Permanent	1.00
General Funds	1.00
Temporary	1.00
General Funds	1.00
Grand Total	2.00



Permanent	27.00
General Funds	27.00
Temporary	1.00
General Funds	1.00
Grand Total	28.00



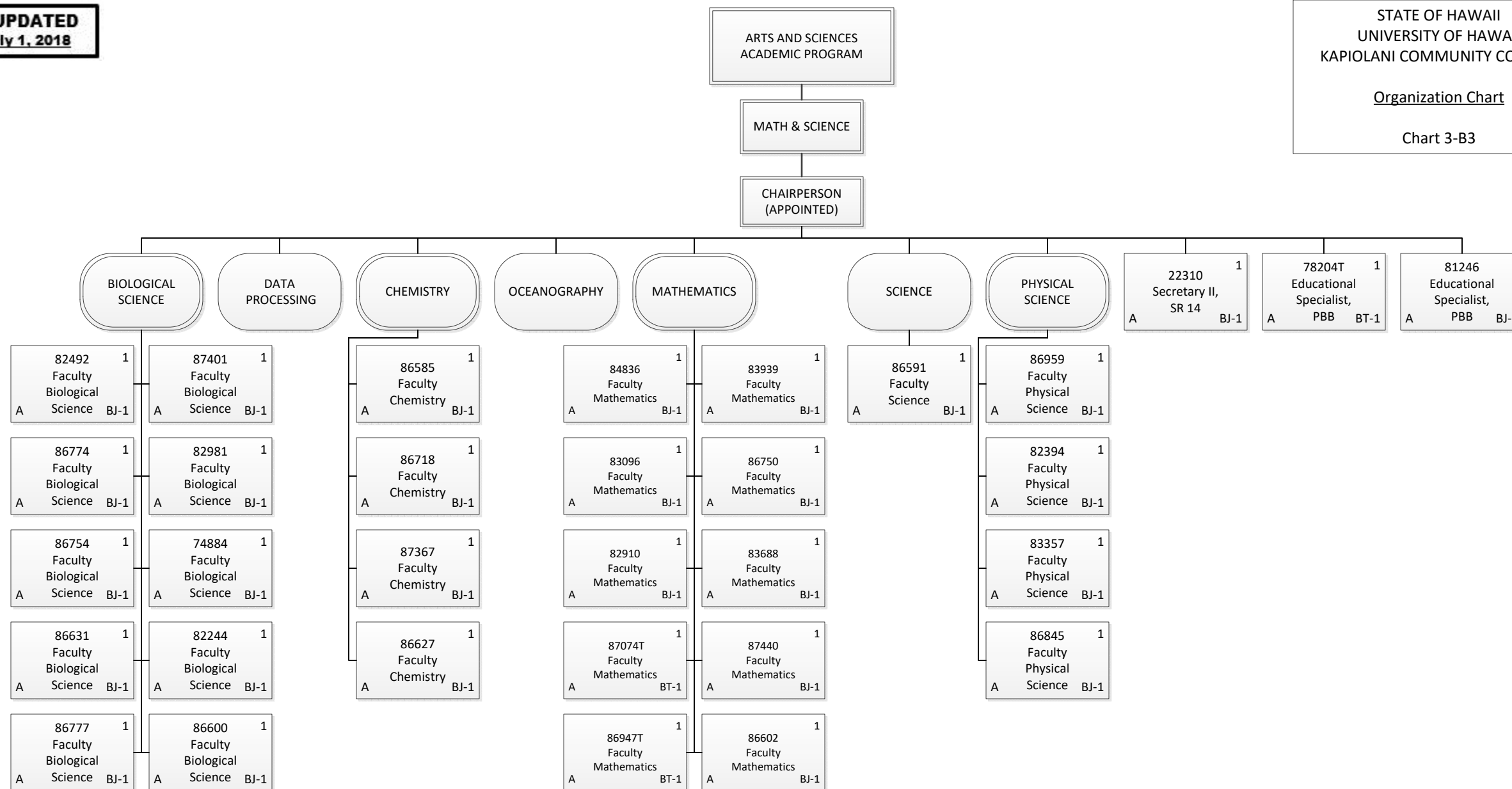


Organization Chart

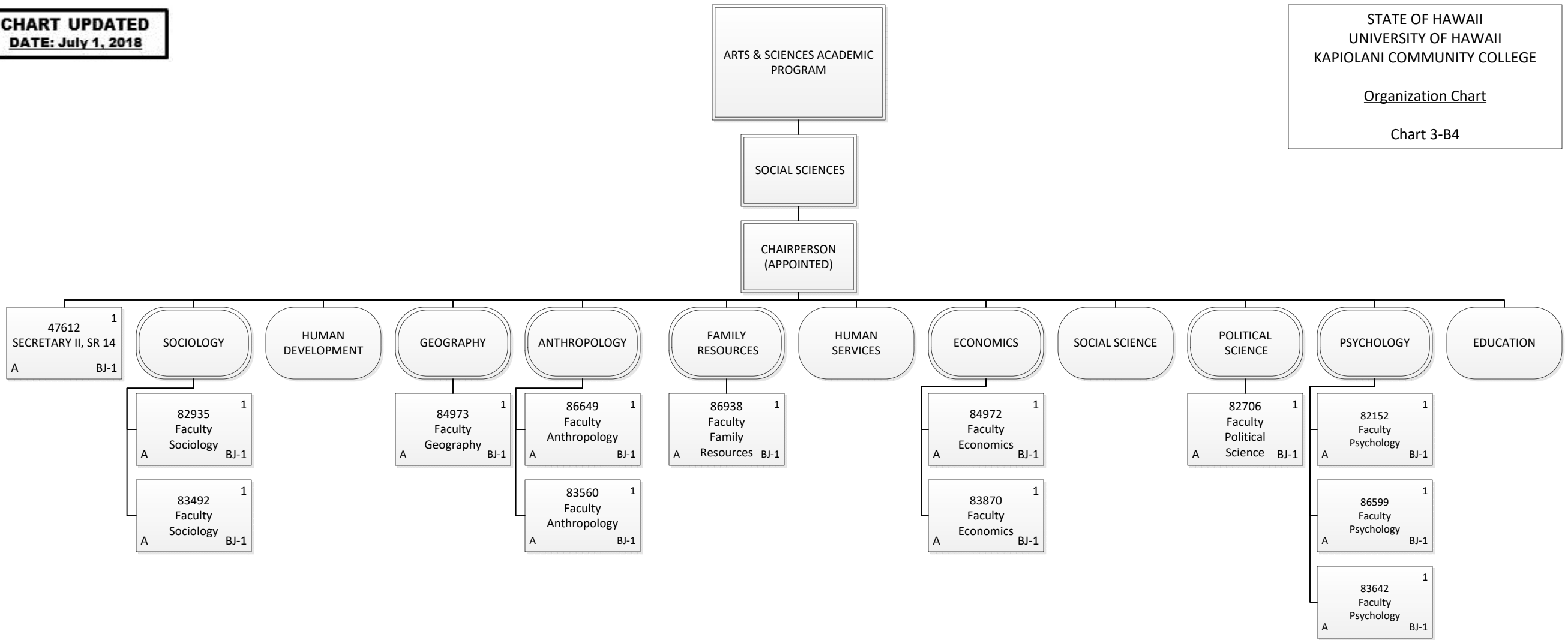
Chart 3-B3

Organization Chart

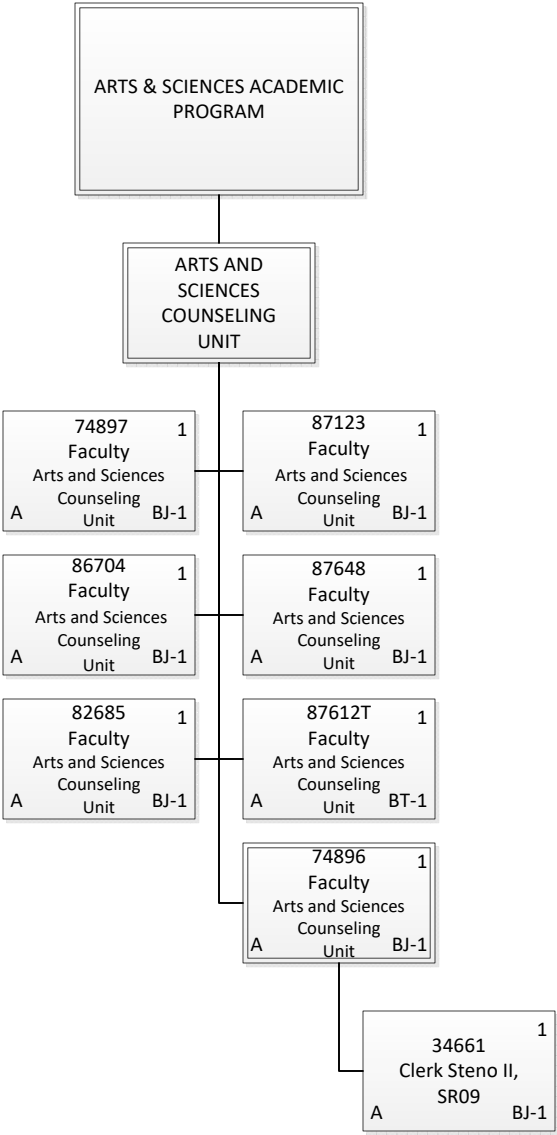
Chart 3-B3



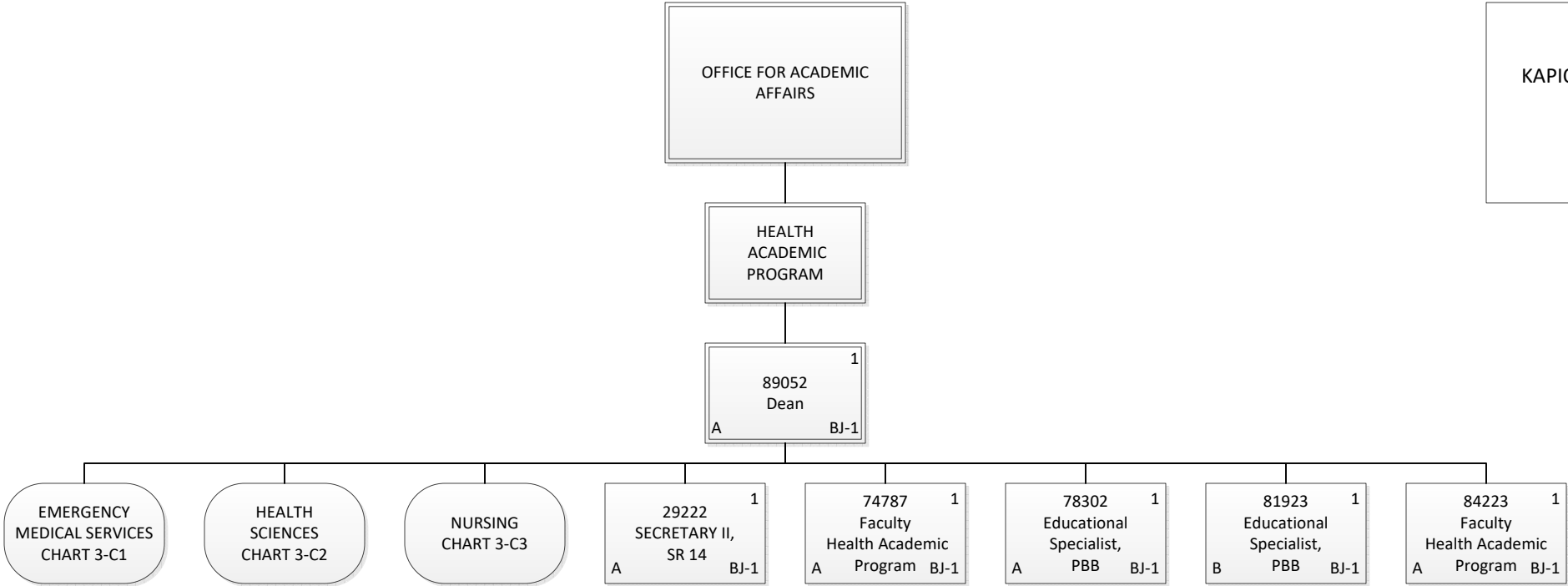
Permanent	29.00
General Funds	29.00
Temporary	3.00
General Funds	3.00
<b>Grand Total</b>	<b>32.00</b>



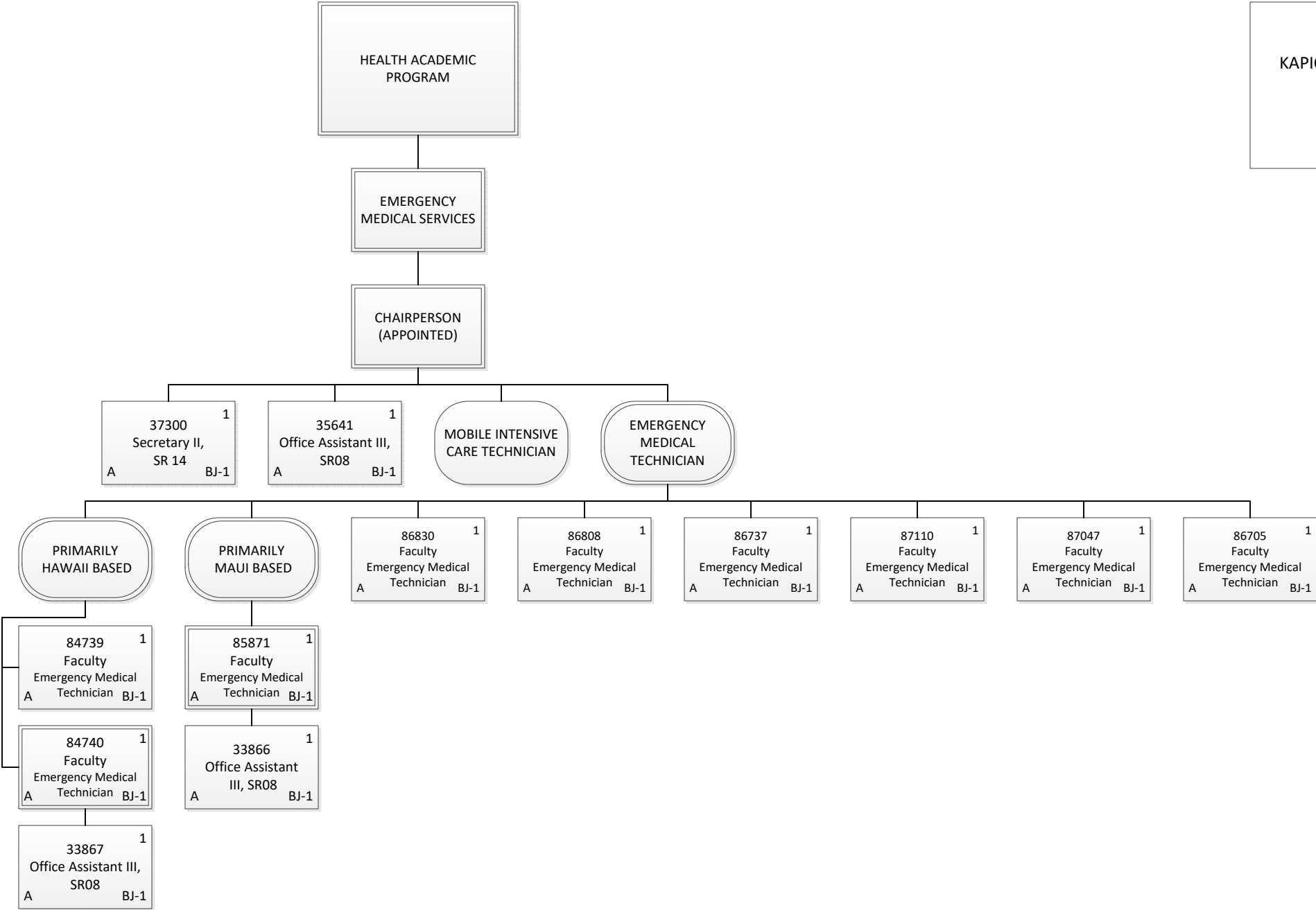
Permanent	13.00
General Funds	13.00
Grand Total	13.00



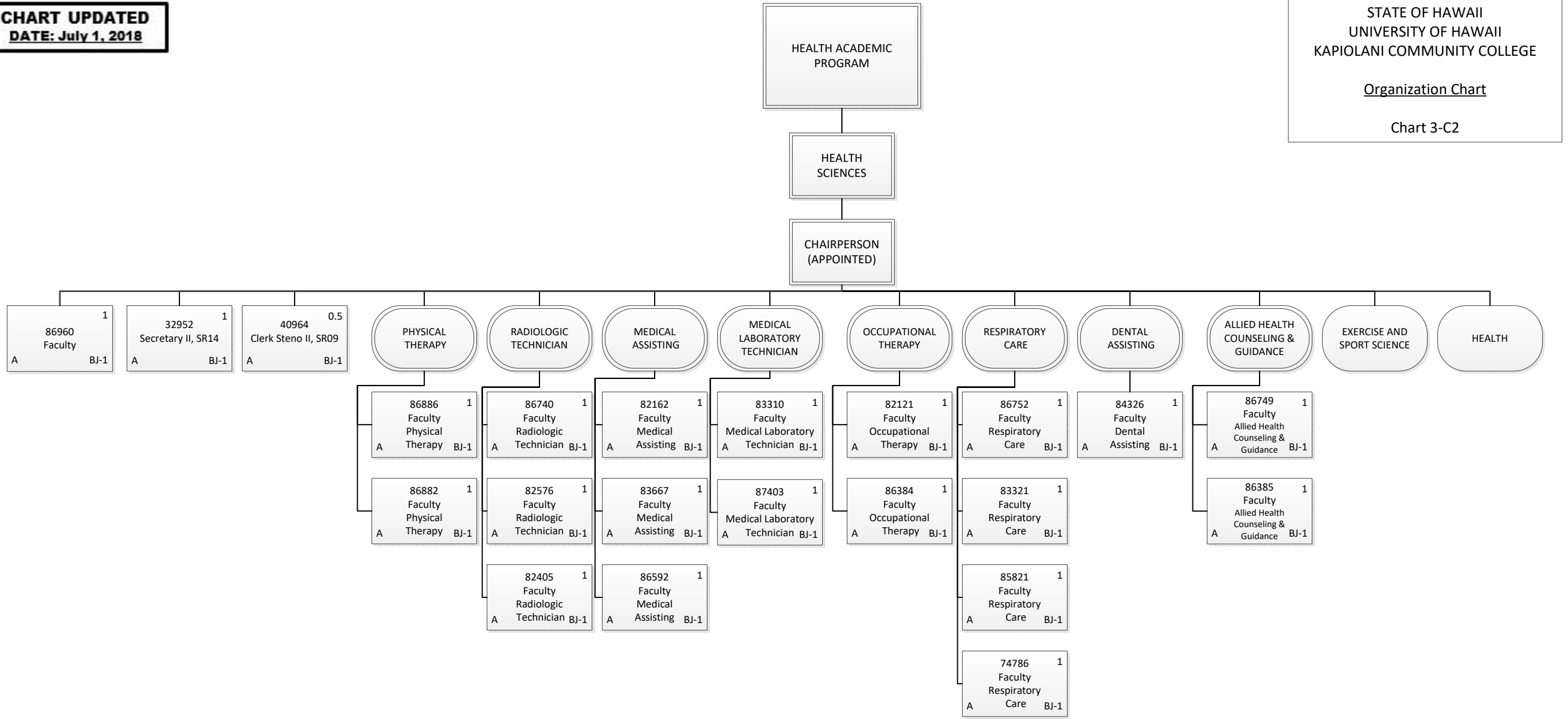
Permanent	7.00
General Funds	7.00
Temporary	1.00
General Funds	1.00
Grand Total	8.00



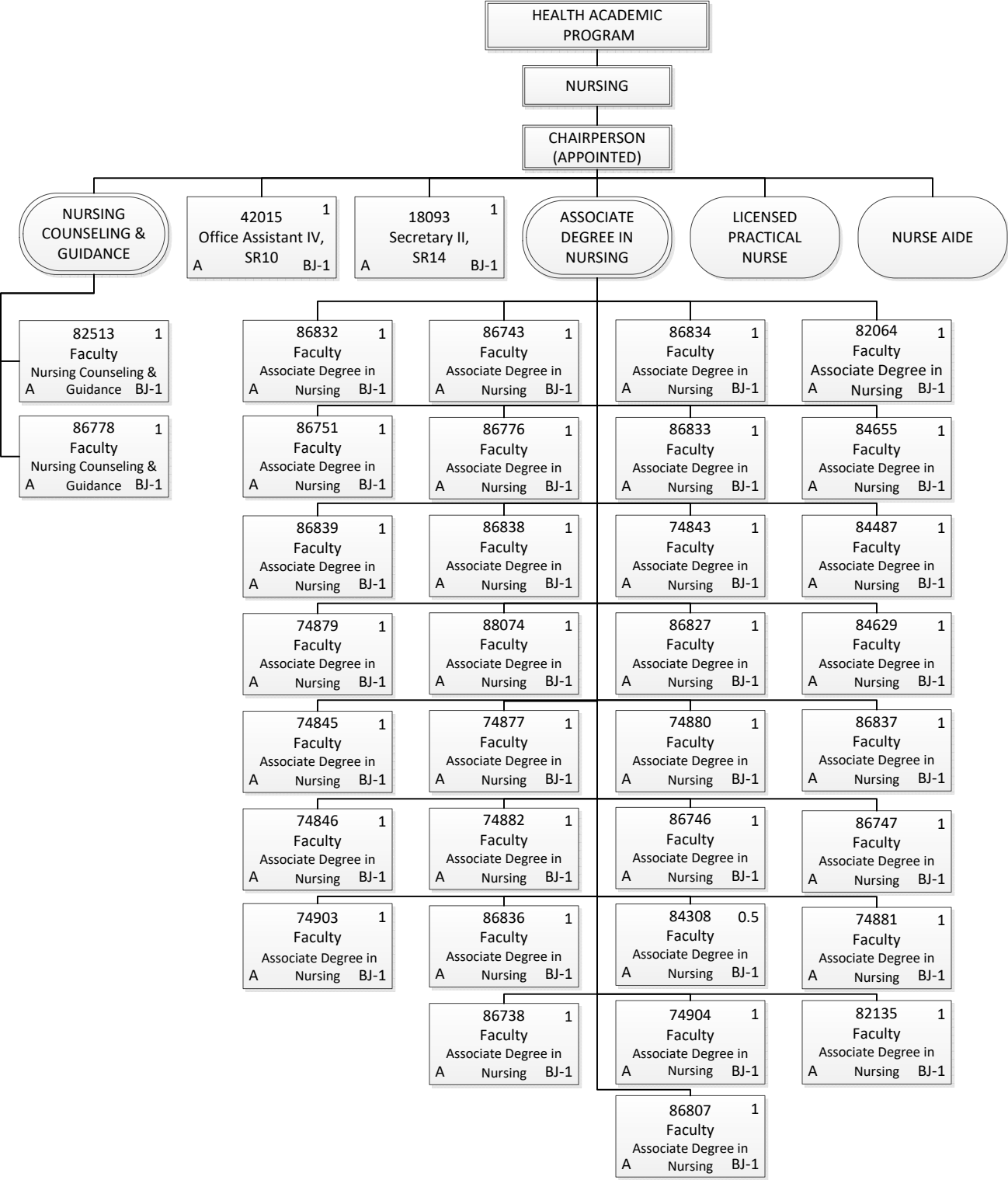
Permanent	6.00
General Funds	5.00
Special Funds	1.00
Grand Total	6.00



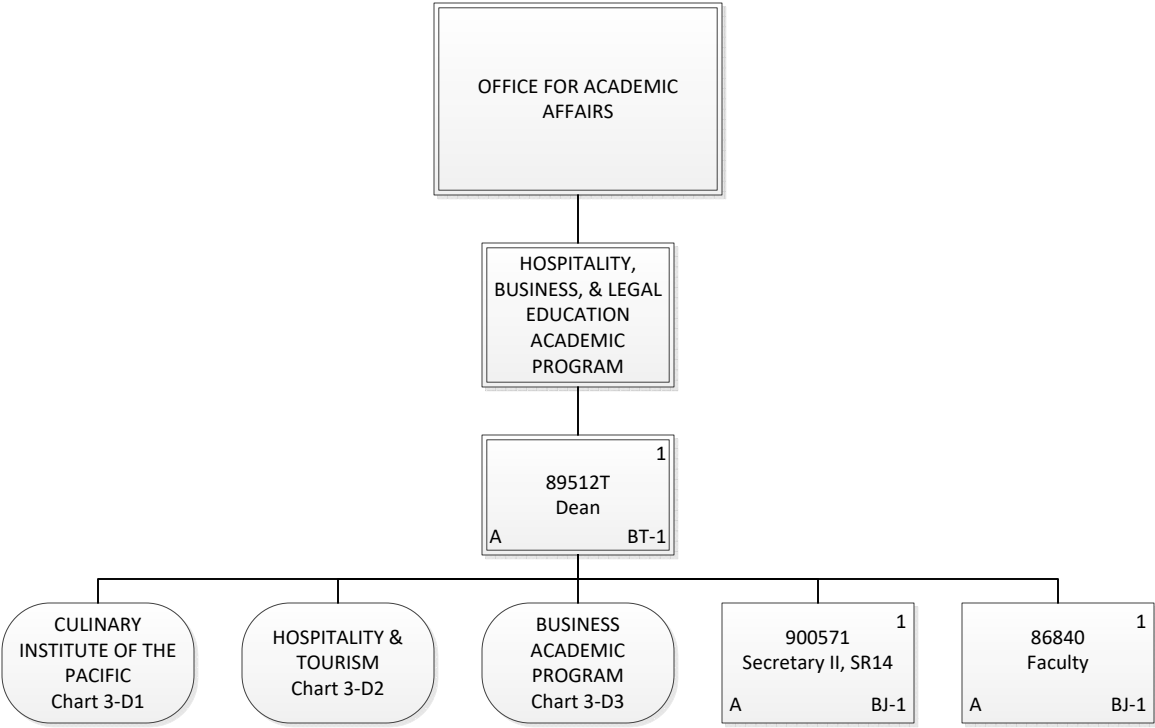
Permanent	13.00
General Funds	13.00
Grand Total	13.00



Permanent	21.50
General Funds	21.50
<b>Grand Total</b>	<b>21.50</b>

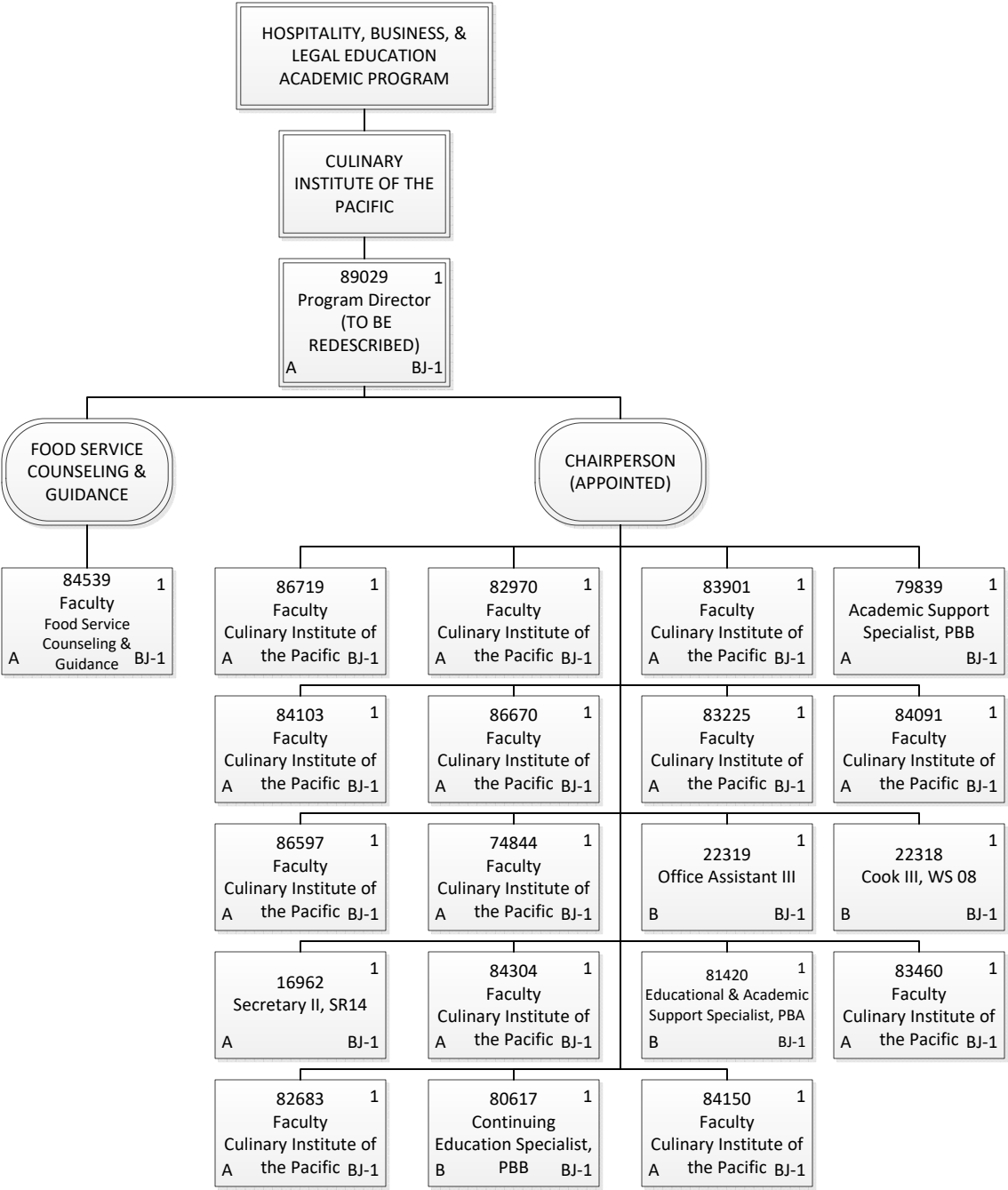


Permanent	35.50
General Funds	35.50
Grand Total	35.50

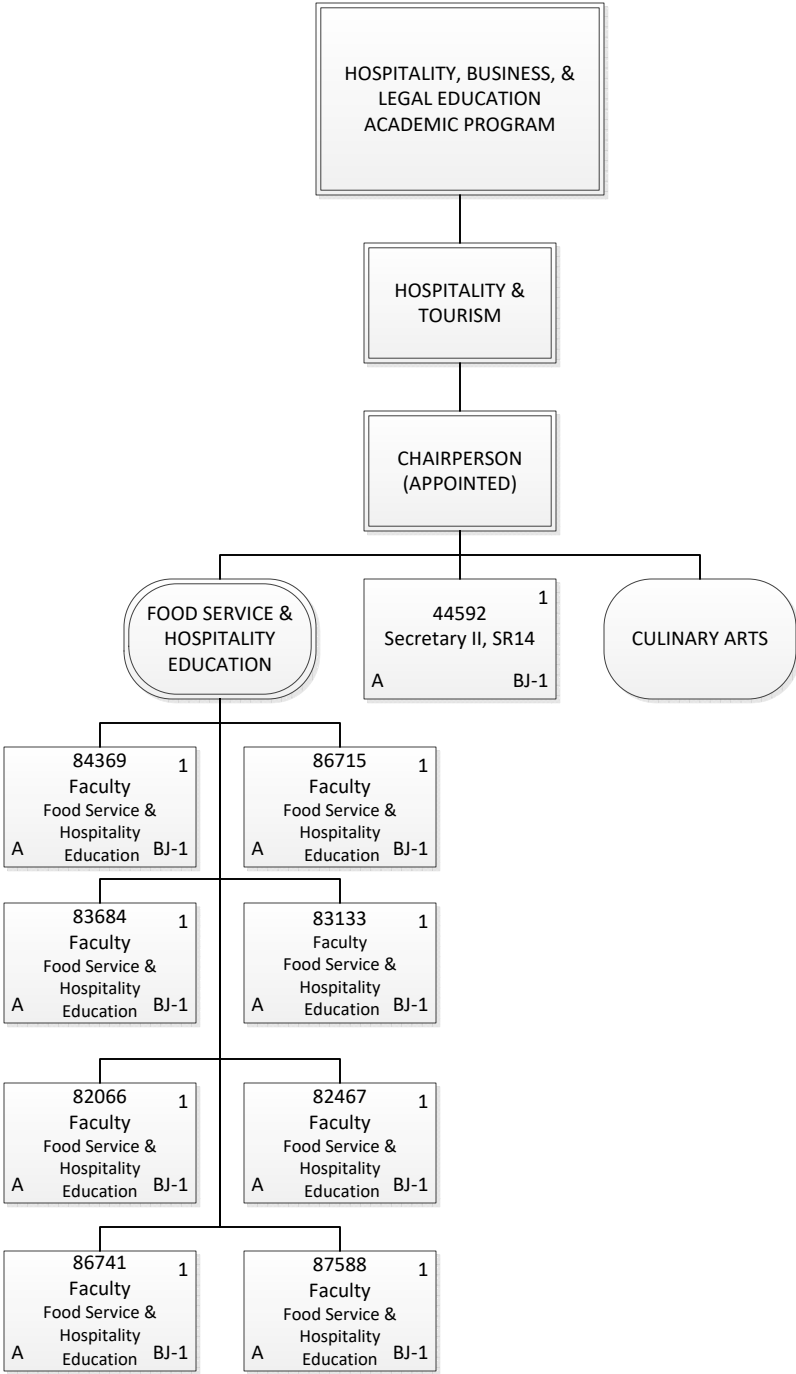


Permanent	2.00
General Funds	2.00
Temporary	1.00
General Funds	1.00
Grand Total	3.00

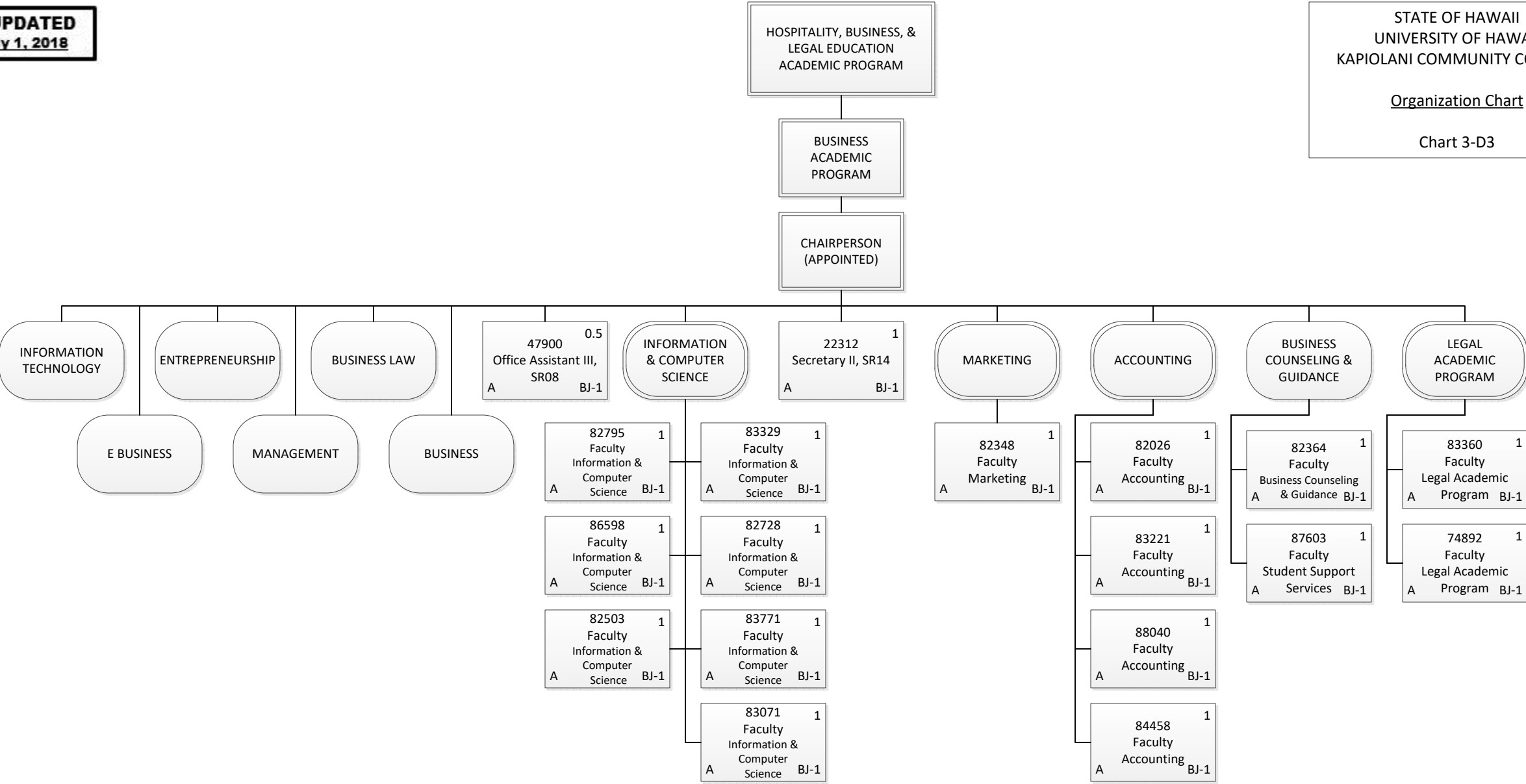




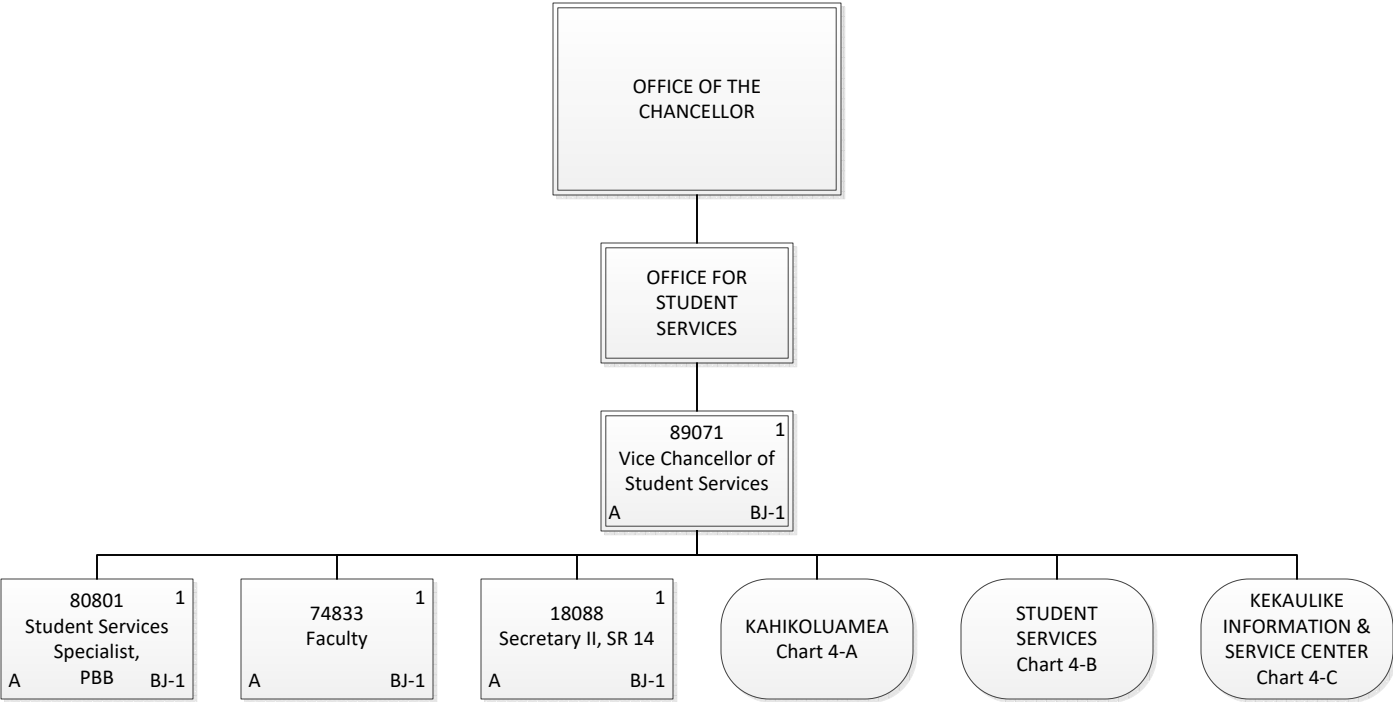
Permanent	21.00
General Funds	17.00
Special Funds	4.00
Grand Total	21.00



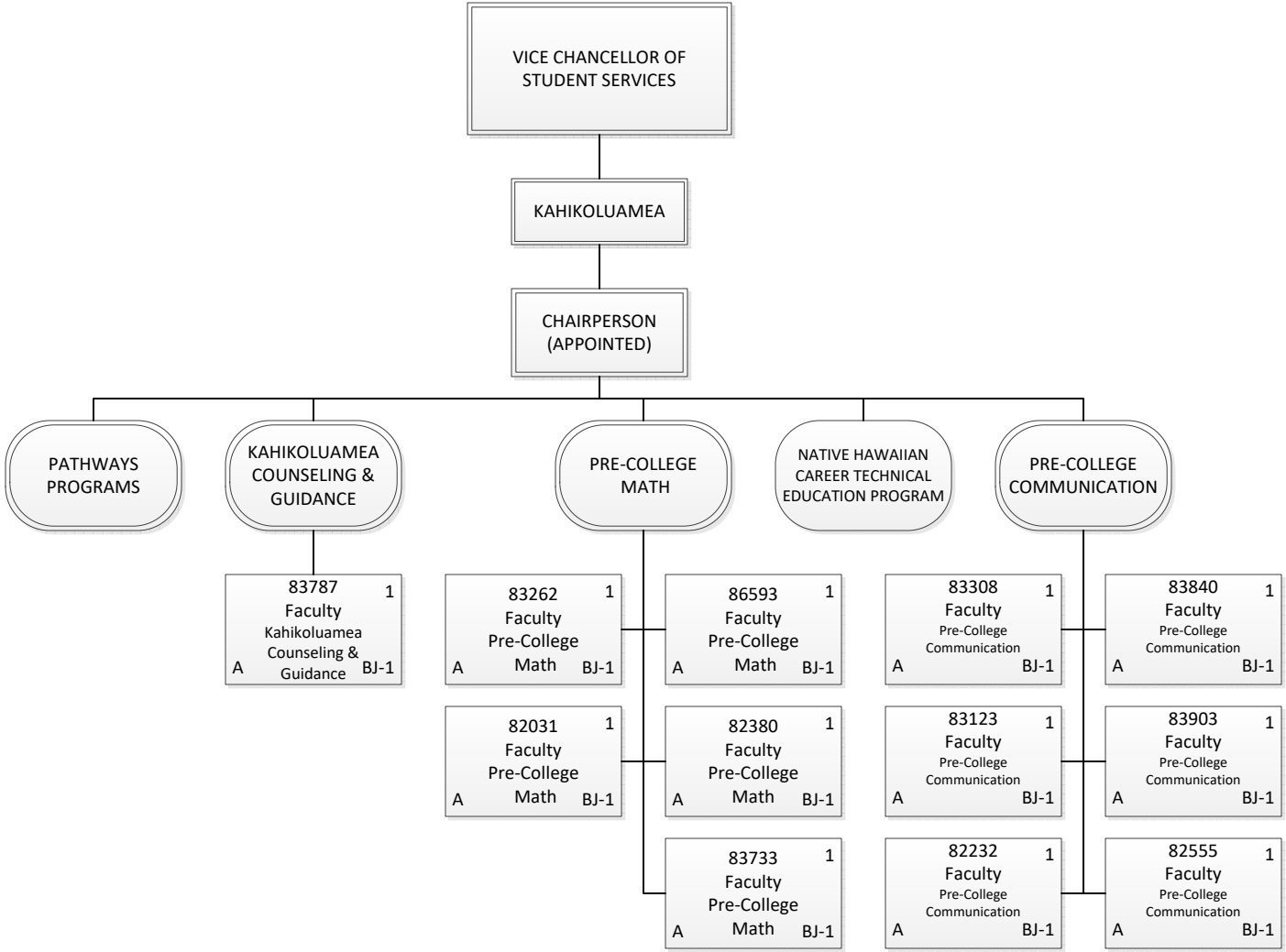
Permanent	9.00
General Funds	9.00
Grand Total	9.00



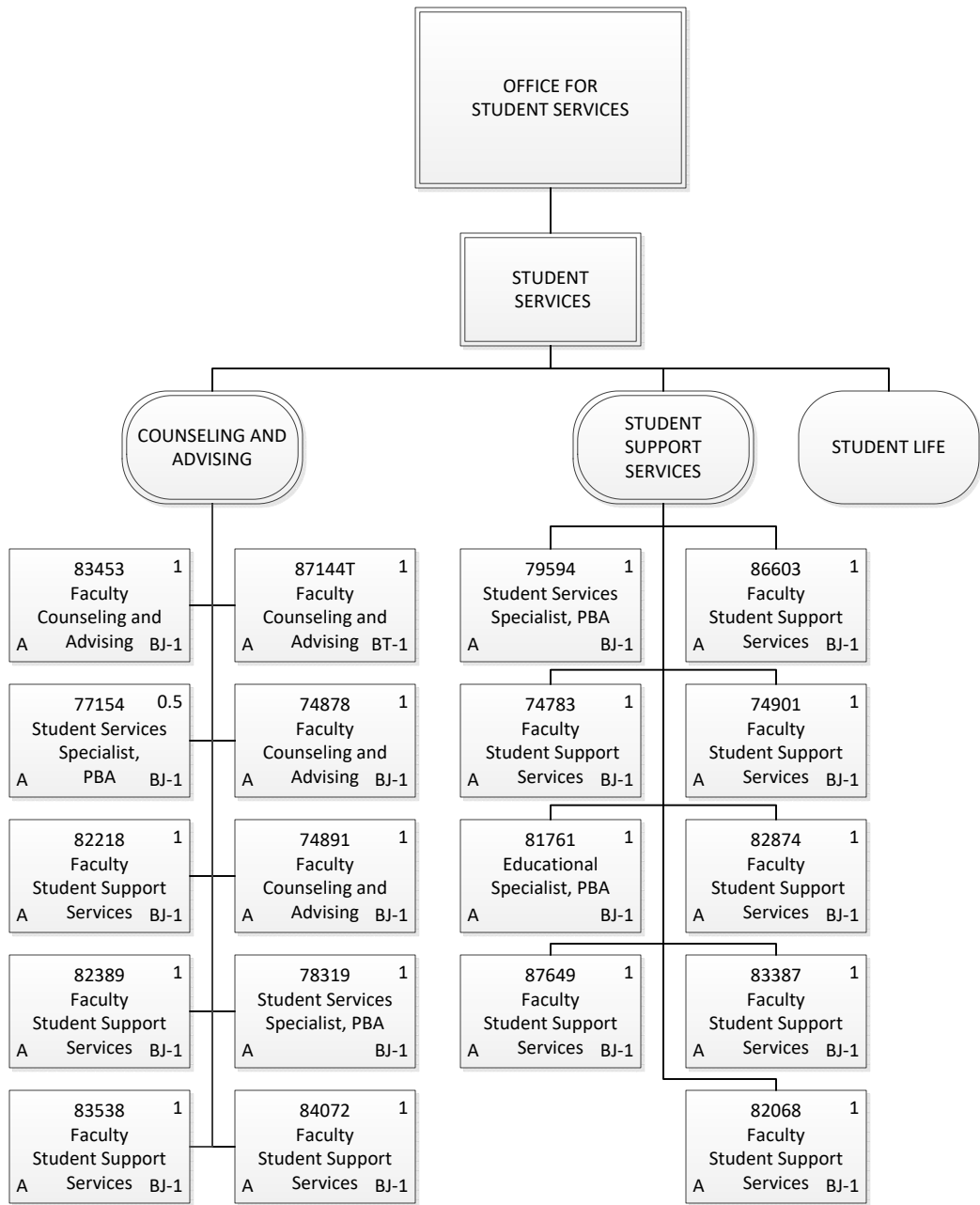
Permanent	17.50
General Funds	17.50
Grand Total	17.50



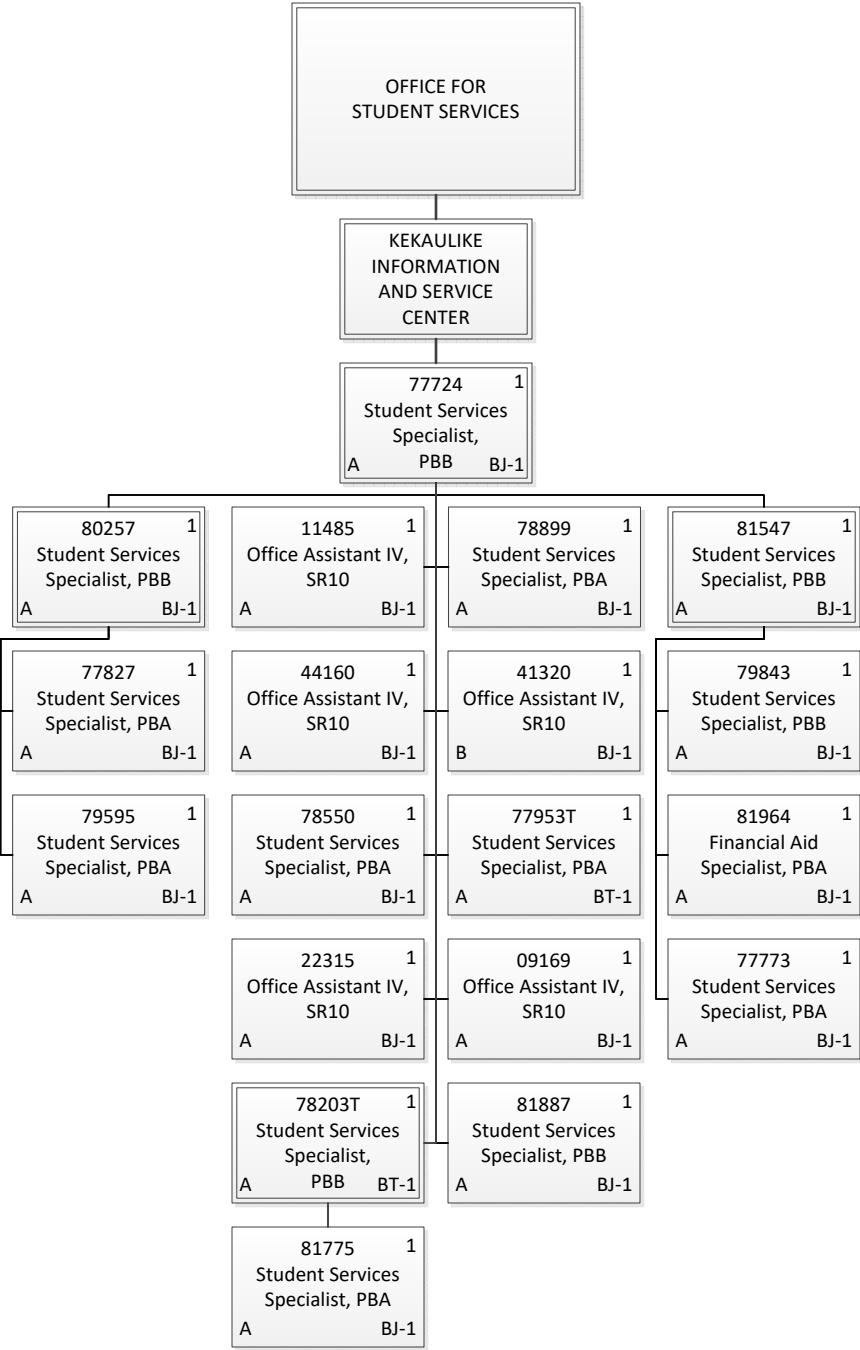
Permanent	4.00
General Funds	4.00
Grand Total	4.00



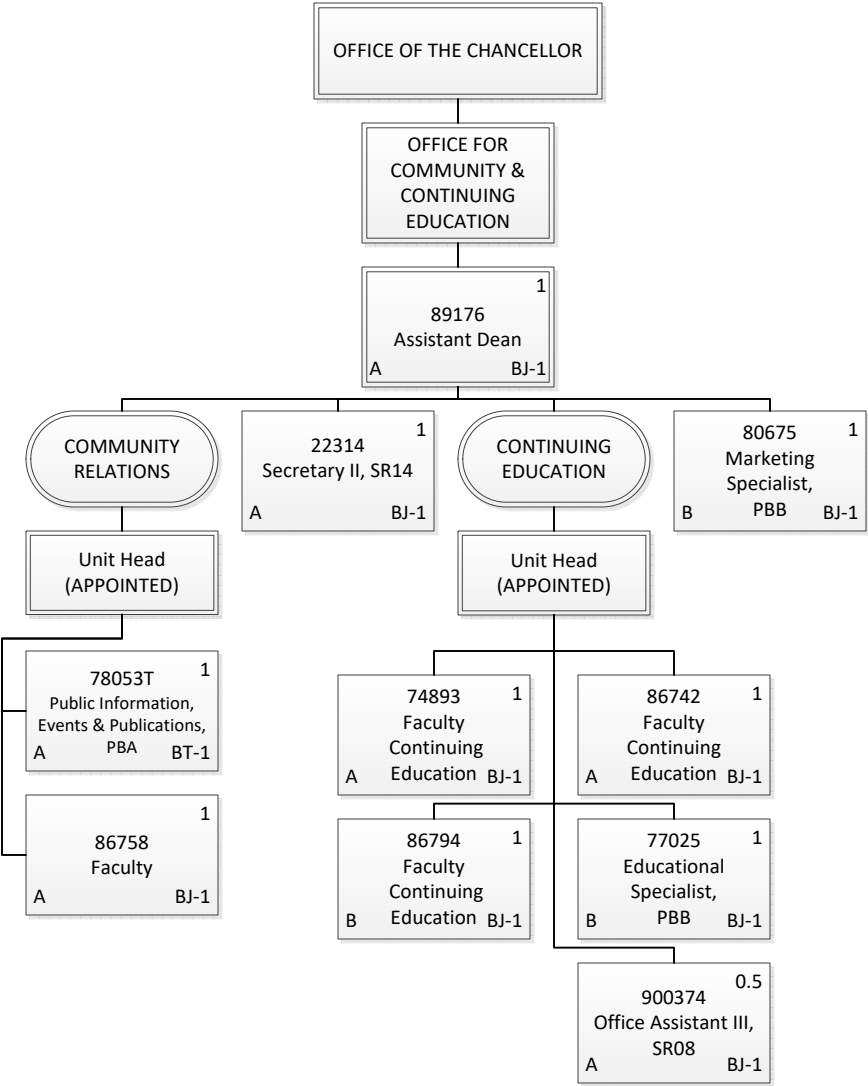
Permanent	12.00
General Funds	12.00
Grand Total	12.00



Permanent	17.50
General Funds	17.50
Temporary	1.00
General Funds	1.00
Grand Total	18.50

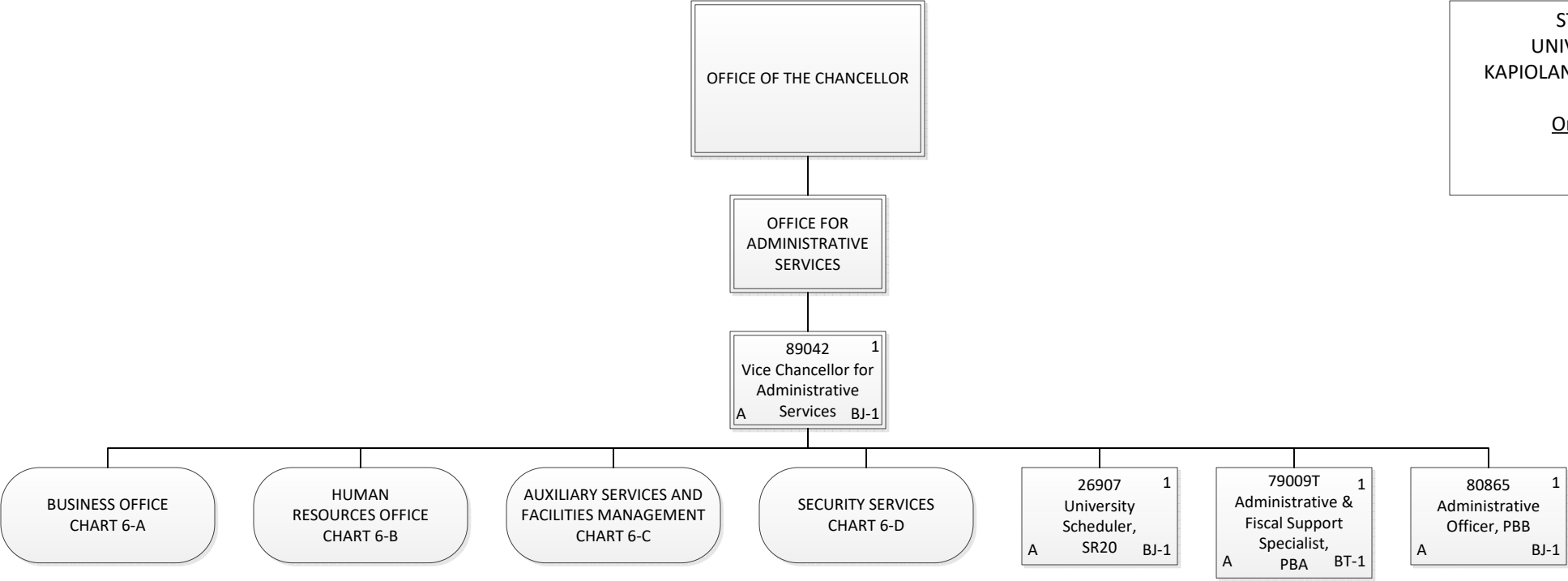


Permanent	17.00
General Funds	16.00
Special Funds	1.00
Temporary	2.00
General Funds	2.00
Grand Total	19.00

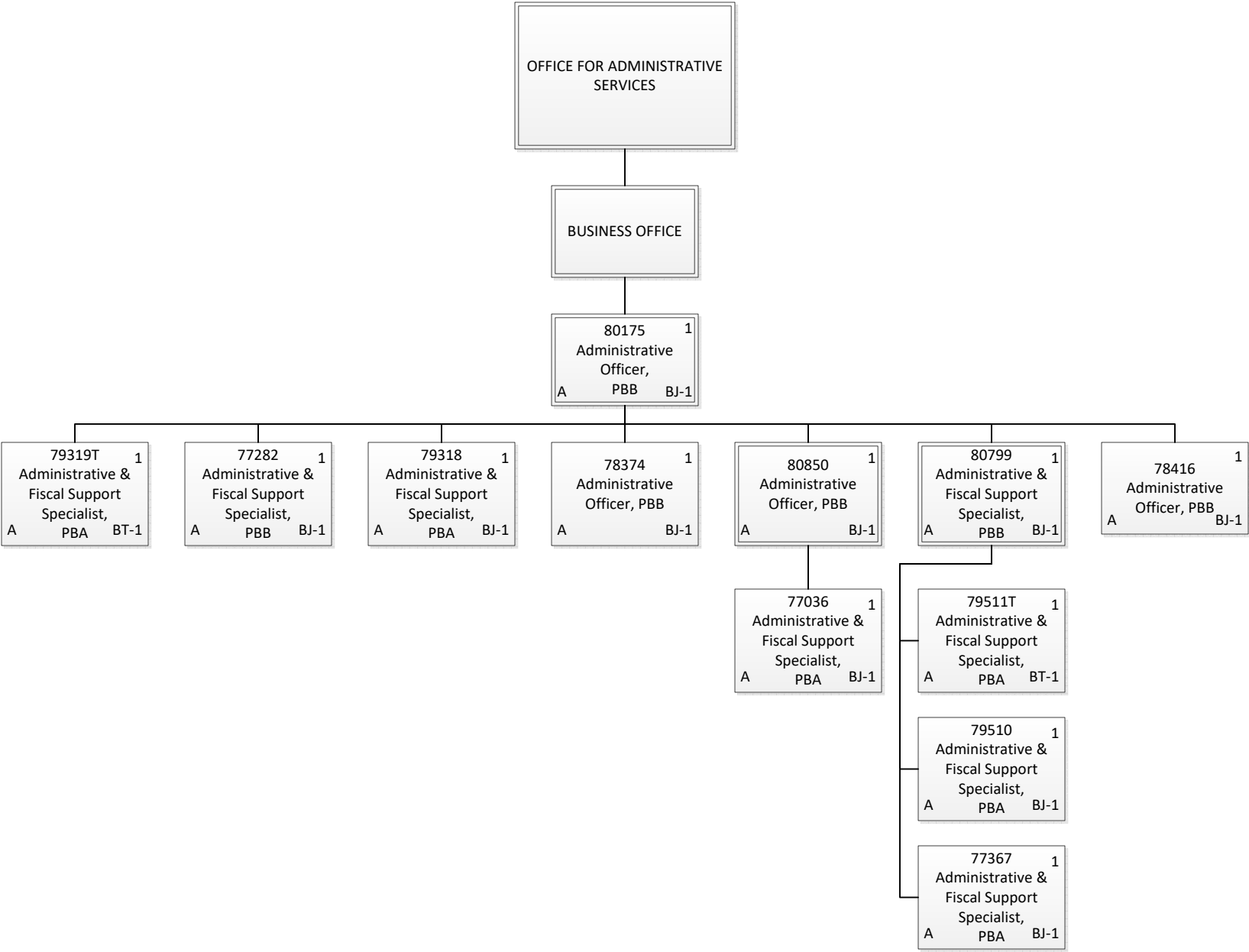


Permanent	8.50
General Funds	5.50
Special Funds	3.00
Temporary	1.00
General Funds	1.00
Grand Total	9.50

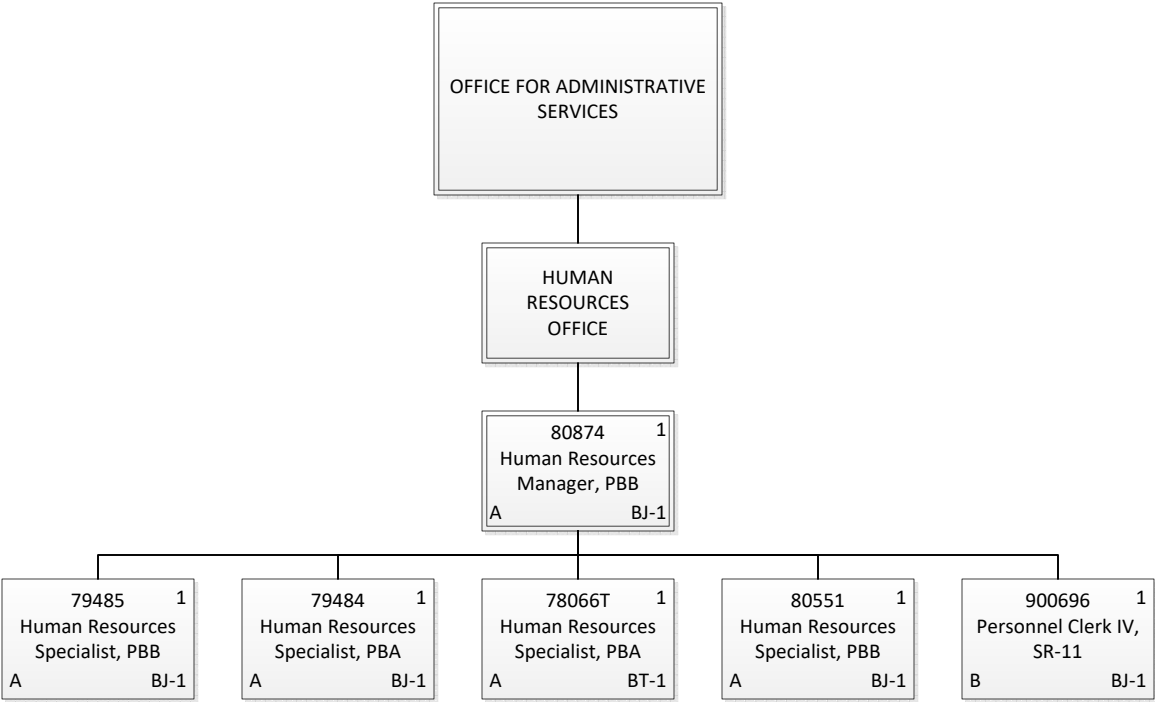




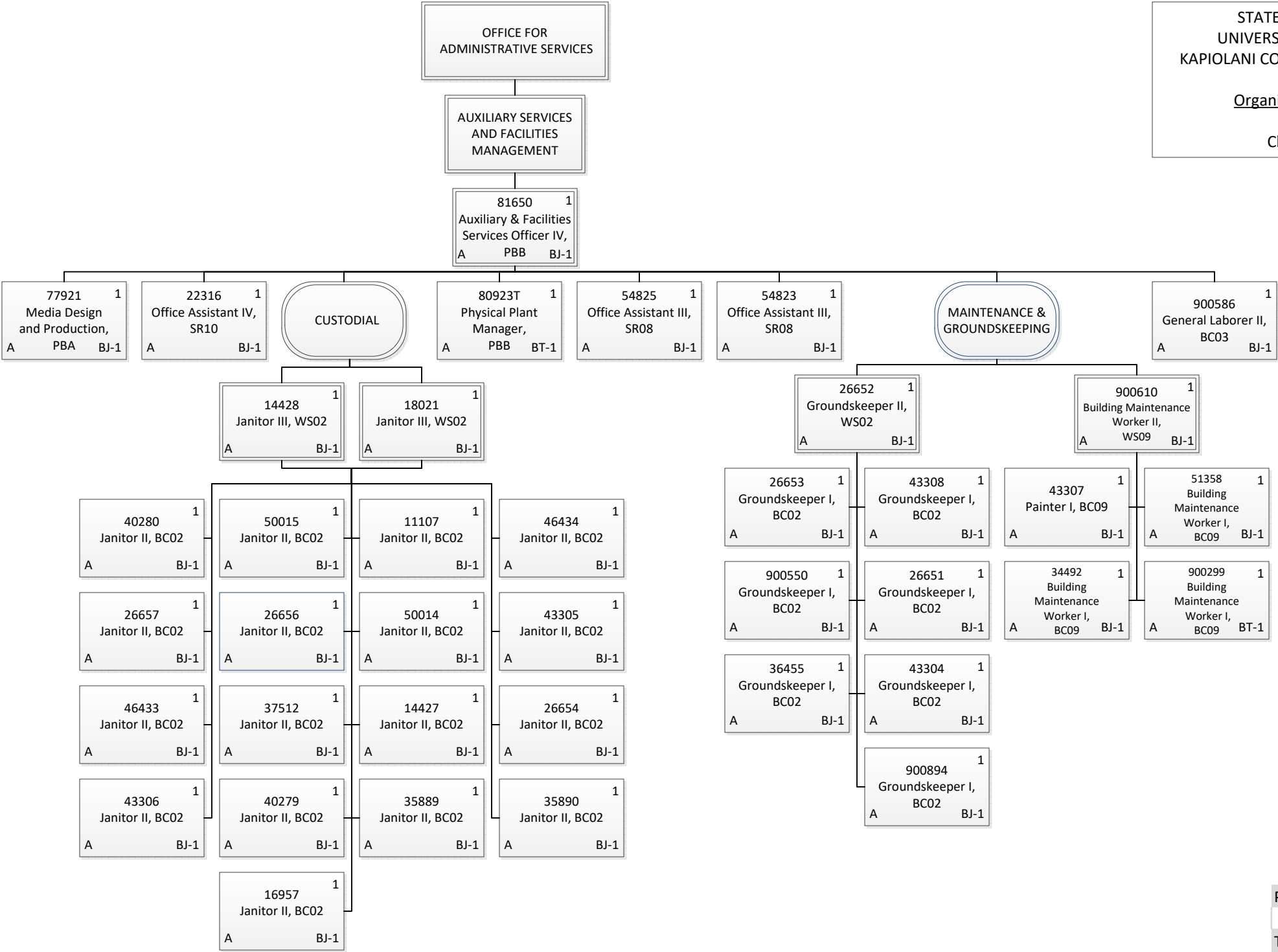
Permanent	3.00
General Funds	3.00
Temporary	1.00
General Funds	1.00
Grand Total	4.00



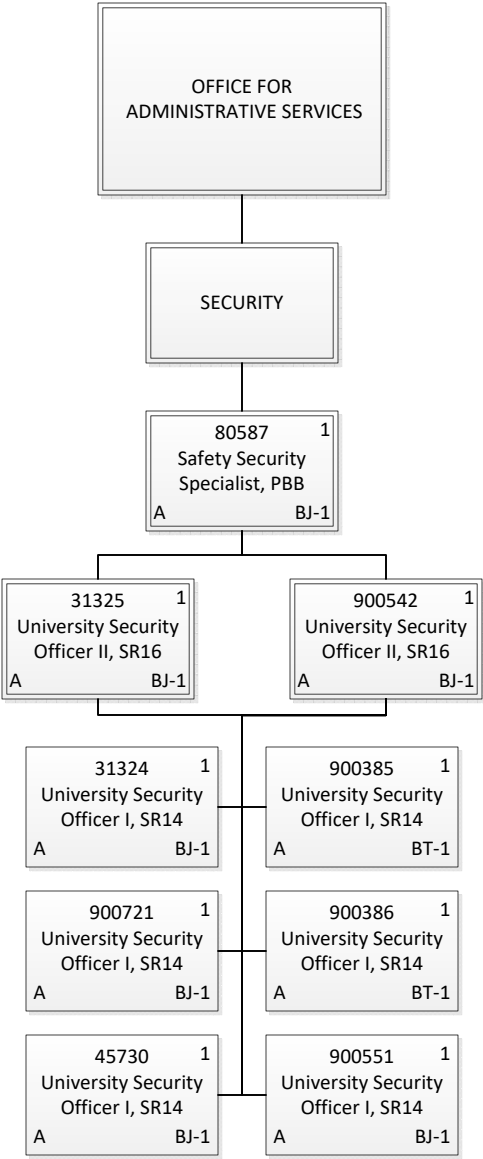
Permanent	10.00
General Funds	10.00
Temporary	2.00
General Funds	2.00
Grand Total	12.00



Permanent	5.00
General Funds	4.00
Special Funds	1.00
Temporary	1.00
General Funds	1.00
Grand Total	6.00



Permanent	37.00
General Funds	37.00
Temporary	2.00
General Funds	2.00
Grand Total	39.00



Organization Chart

Chart 6-D

Permanent	7.00
General Funds	7.00
Temporary	2.00
General Funds	2.00
Grand Total	9.00