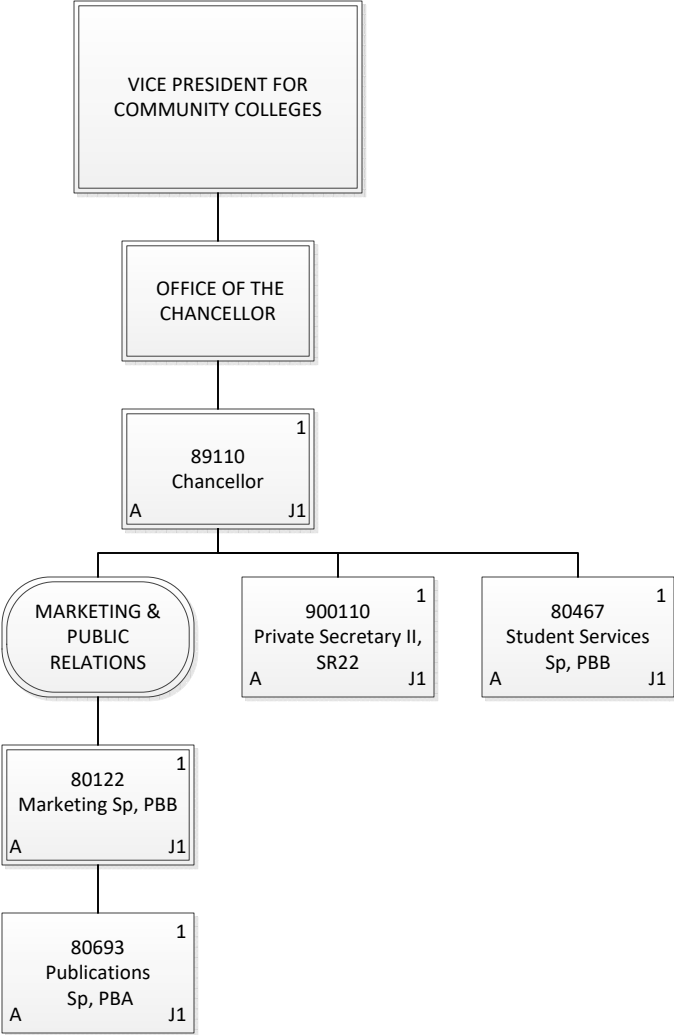
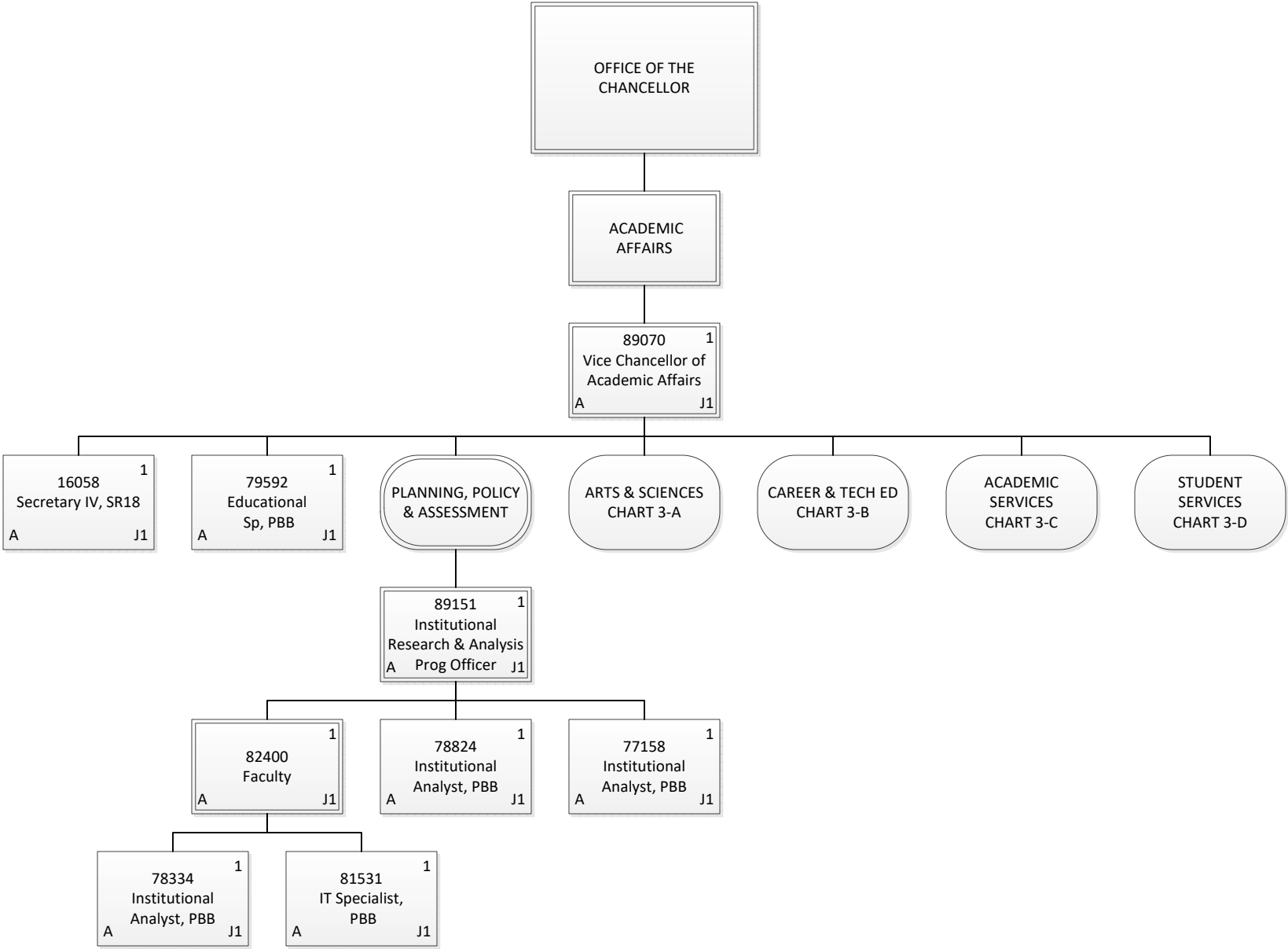


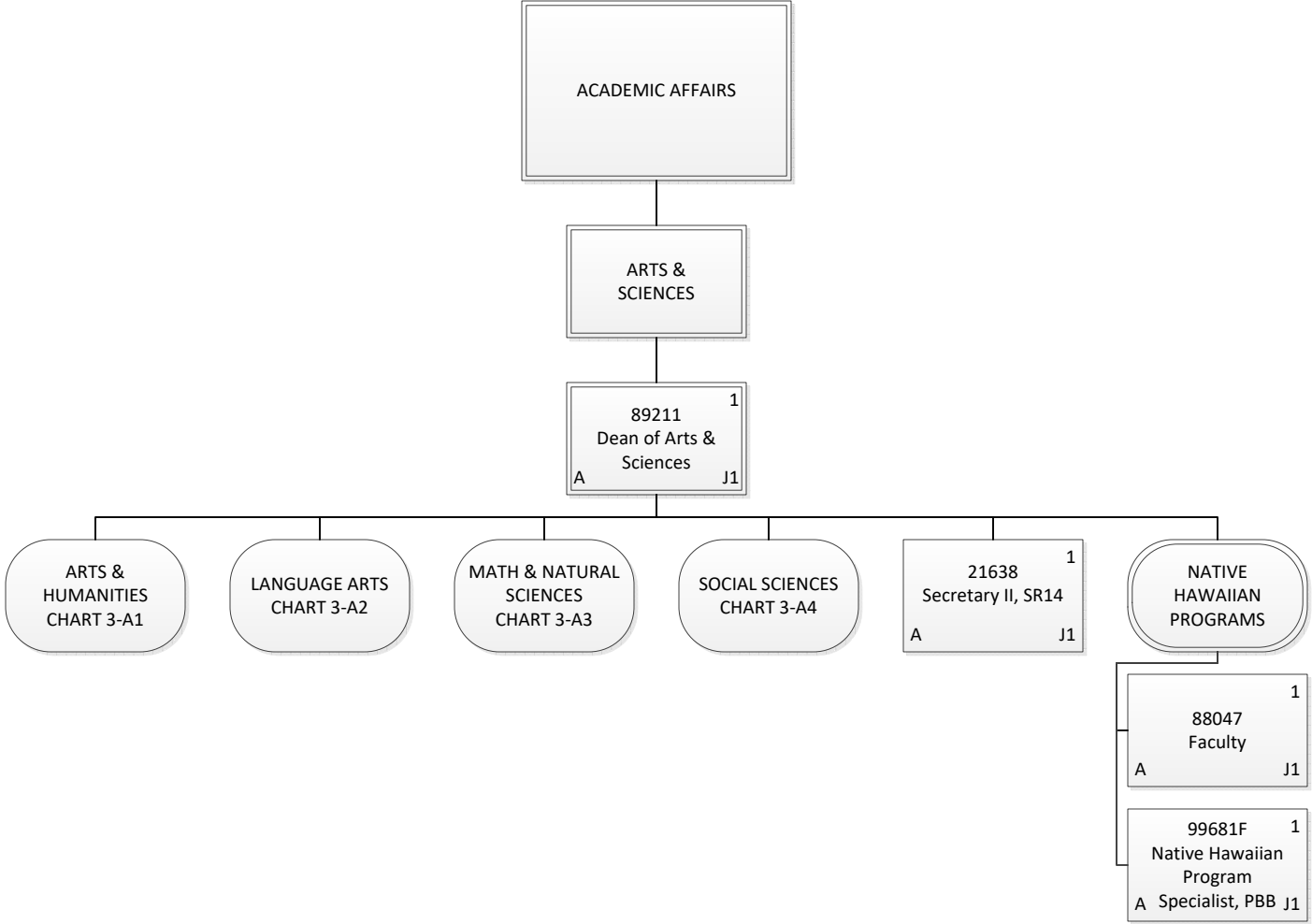
Permanent	348.00
General Fund	340.00
Special Fund	8.00
Temporary	3.00
General Fund	3.00
Grand Total	351.00



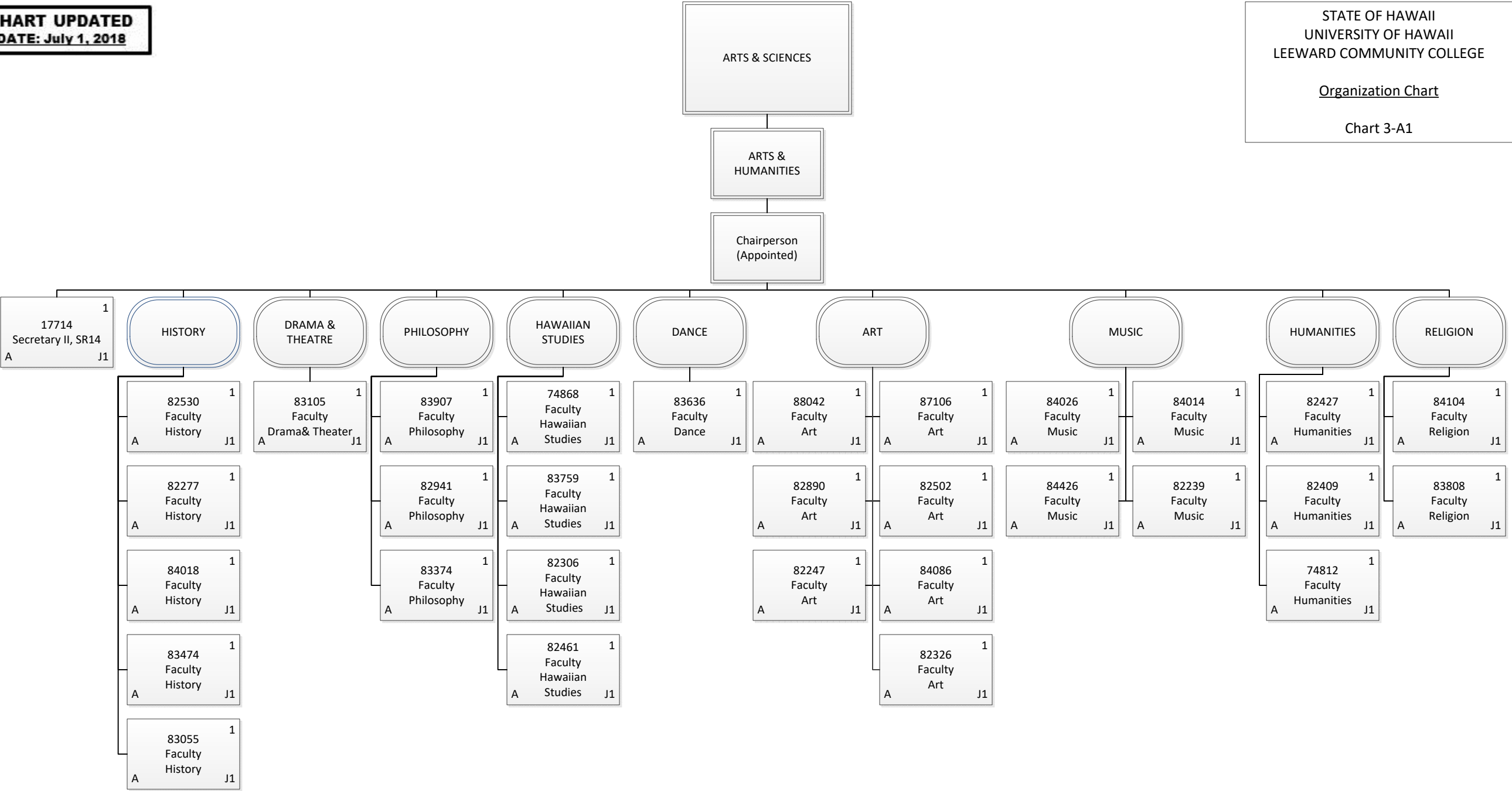
Permanent	5.00
General Fund	5.00
Grand Total	5.00



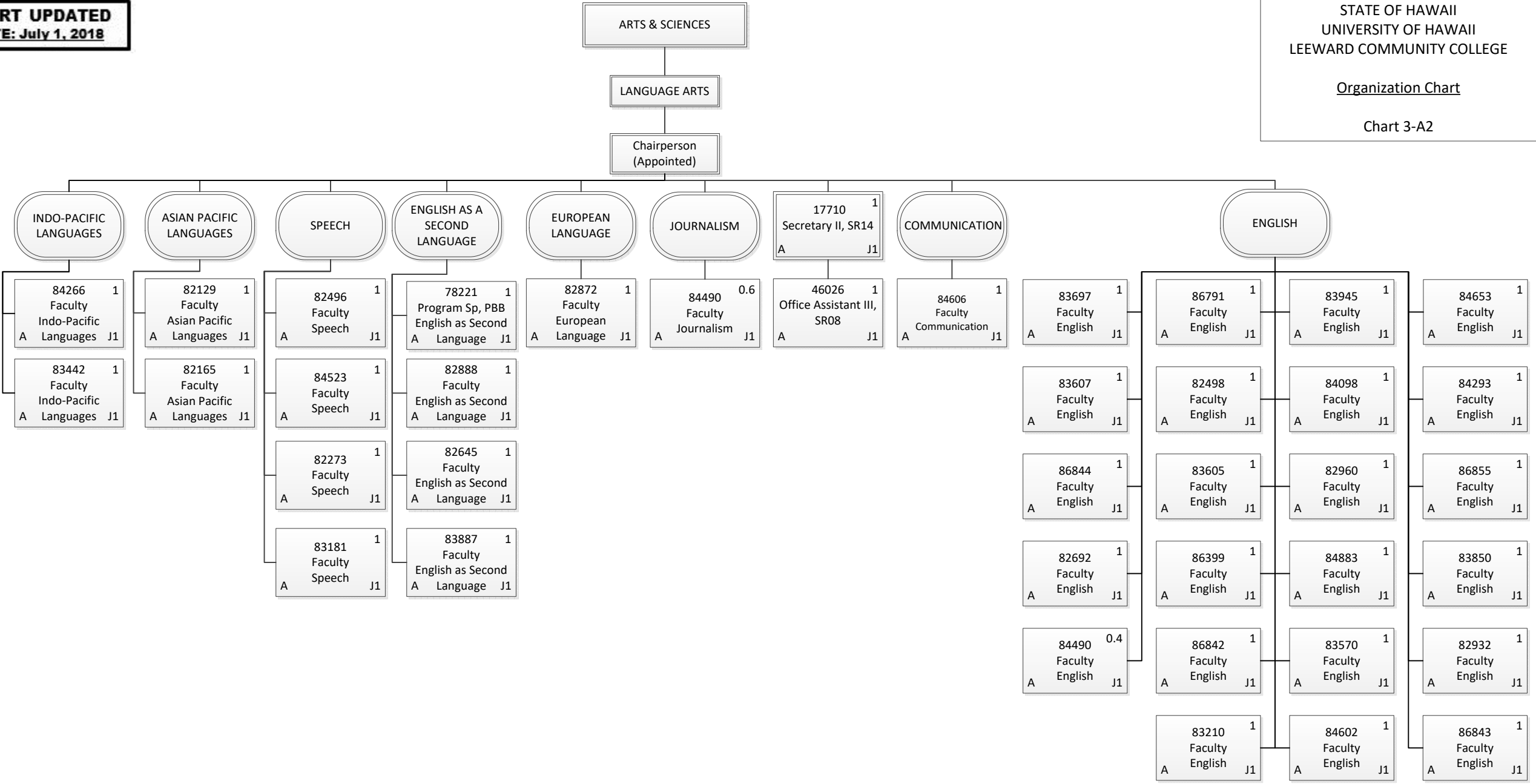
Permanent	9.00
General Fund	9.00
Grand Total	9.00



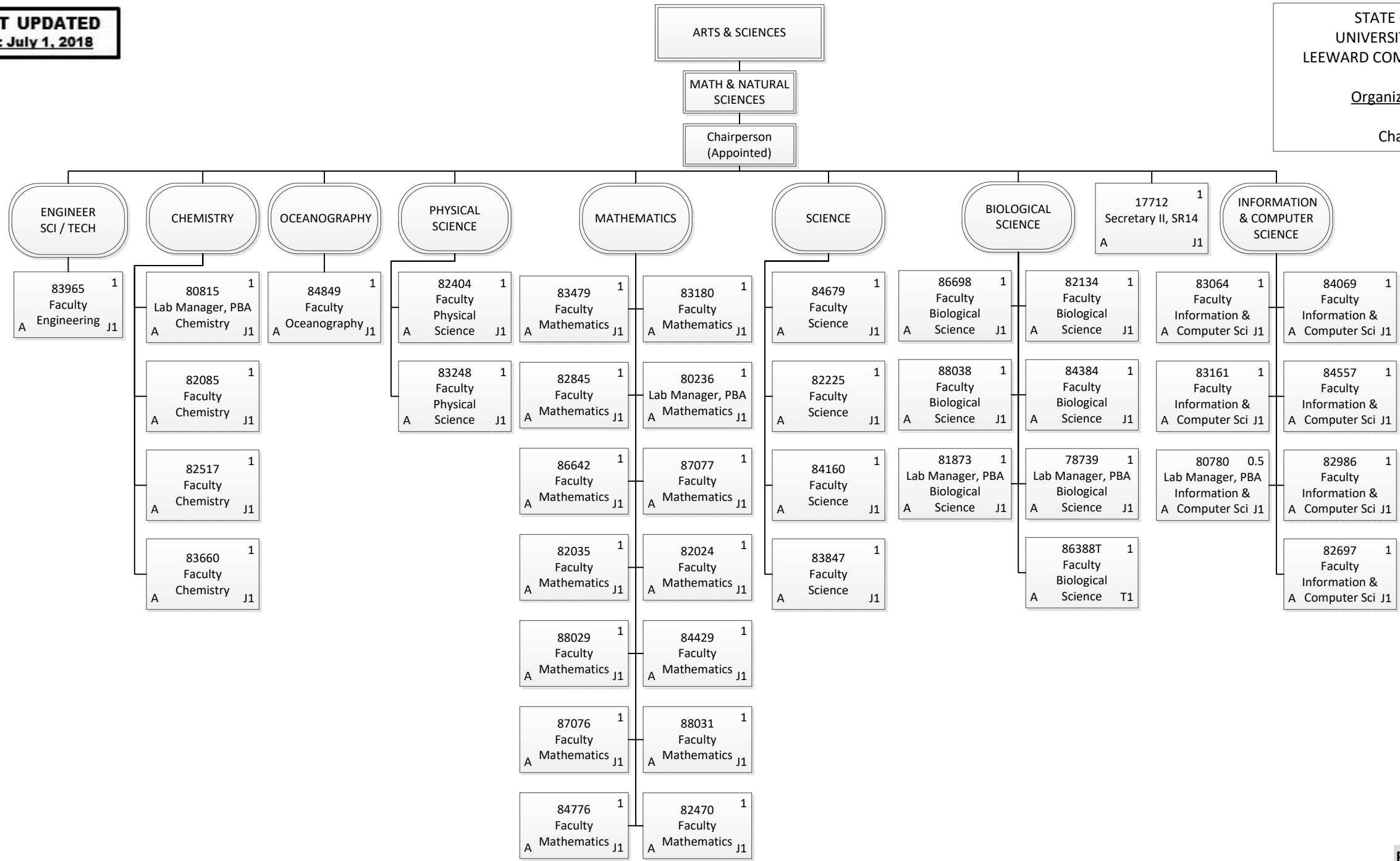
Permanent	4.00
General Fund	4.00
Grand Total	4.00



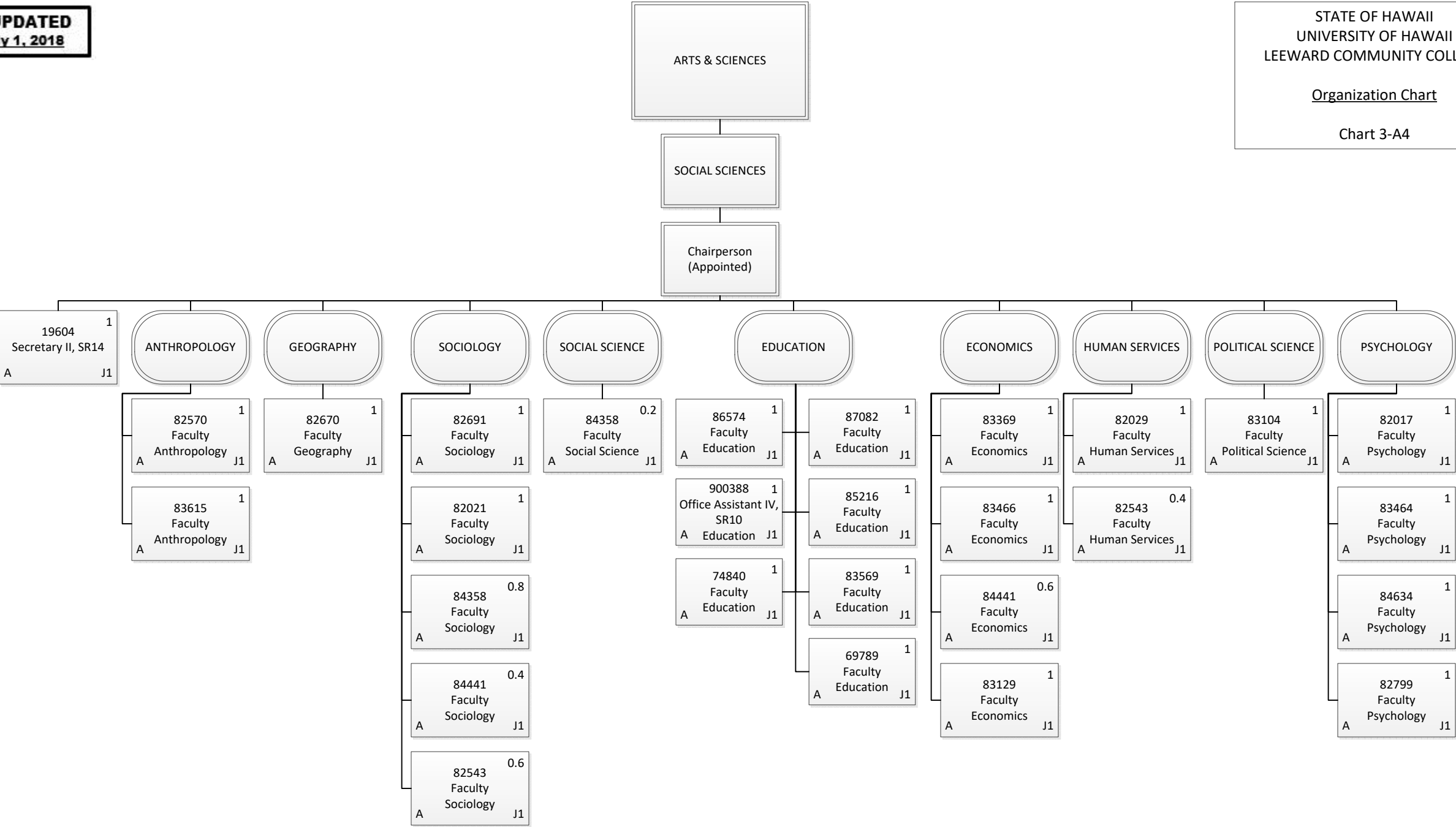
Permanent	31.00
General Fund	31.00
Grand Total	31.00



Permanent	39.00
General Fund	39.00
Grand Total	39.00

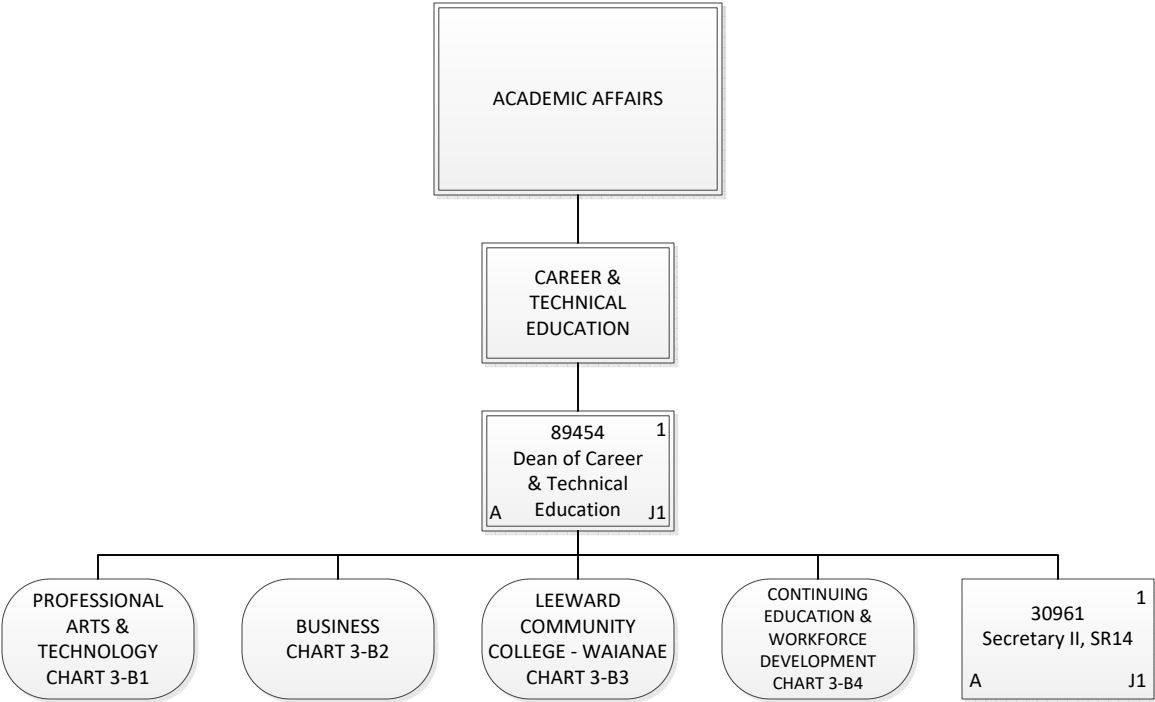


Permanent	39.50
General Fund	39.50
Temporary	1.00
General Fund	1.00
Grand Total	40.50

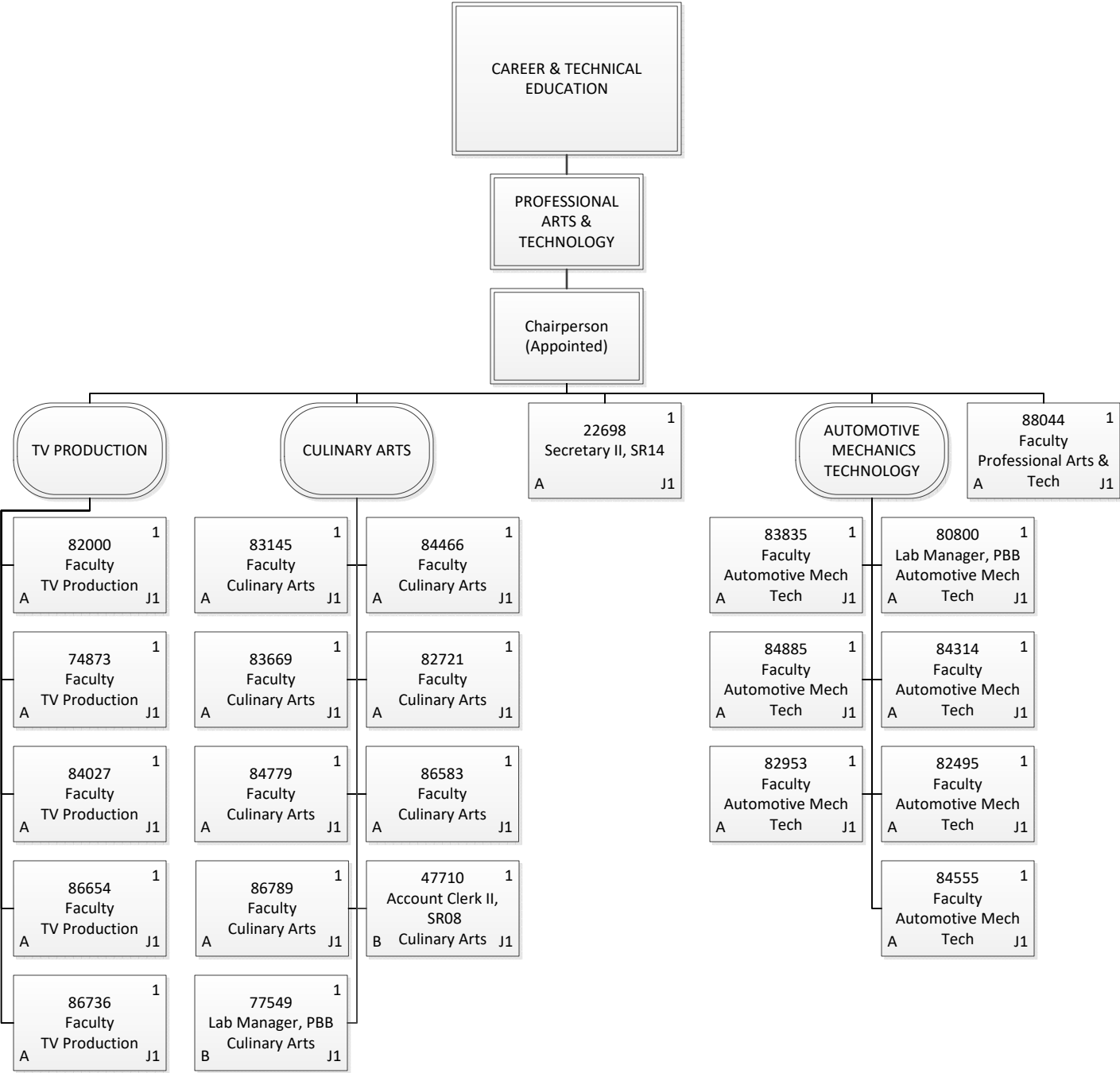


Permanent	25.00
General Fund	25.00
Grand Total	25.00

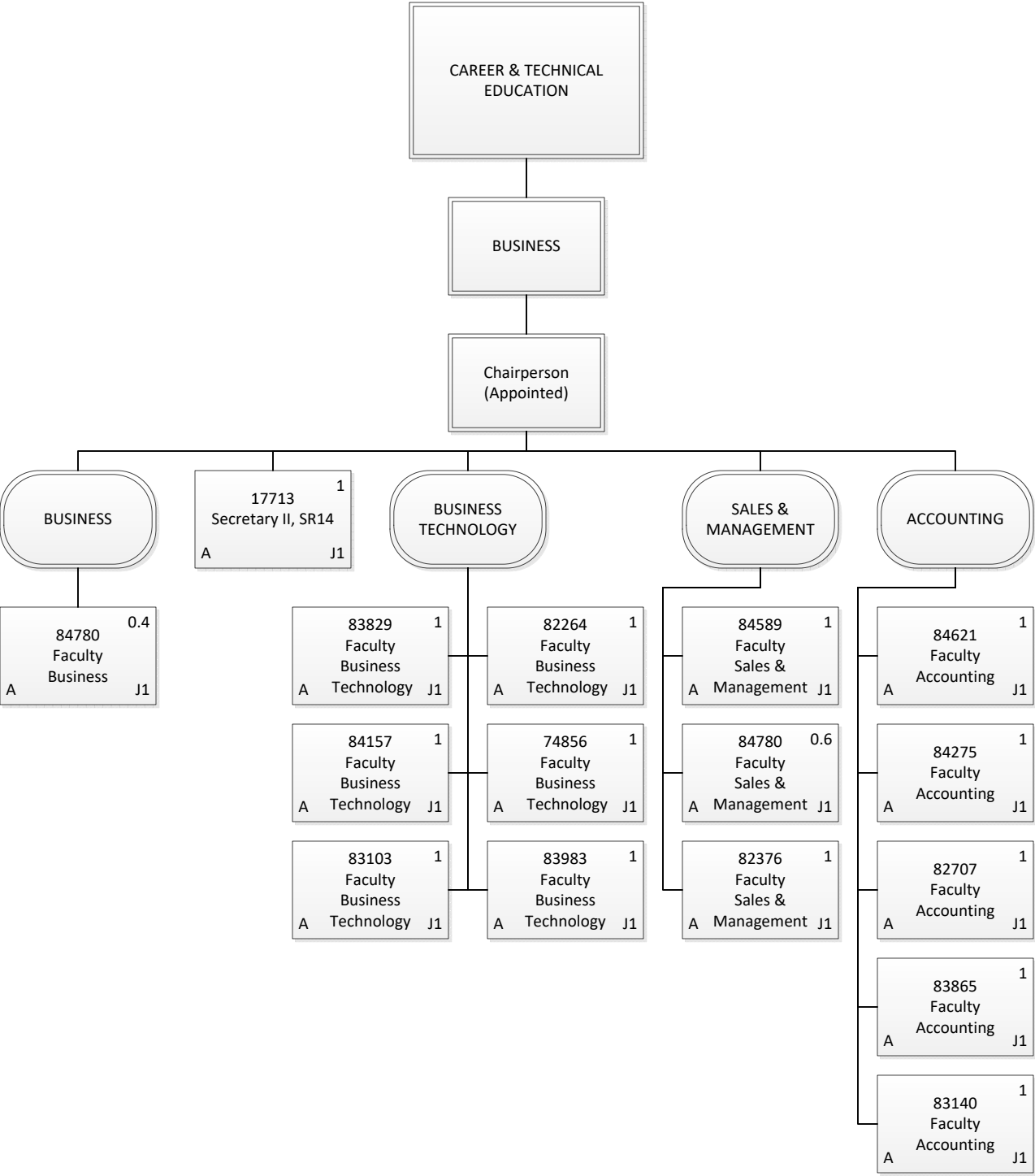




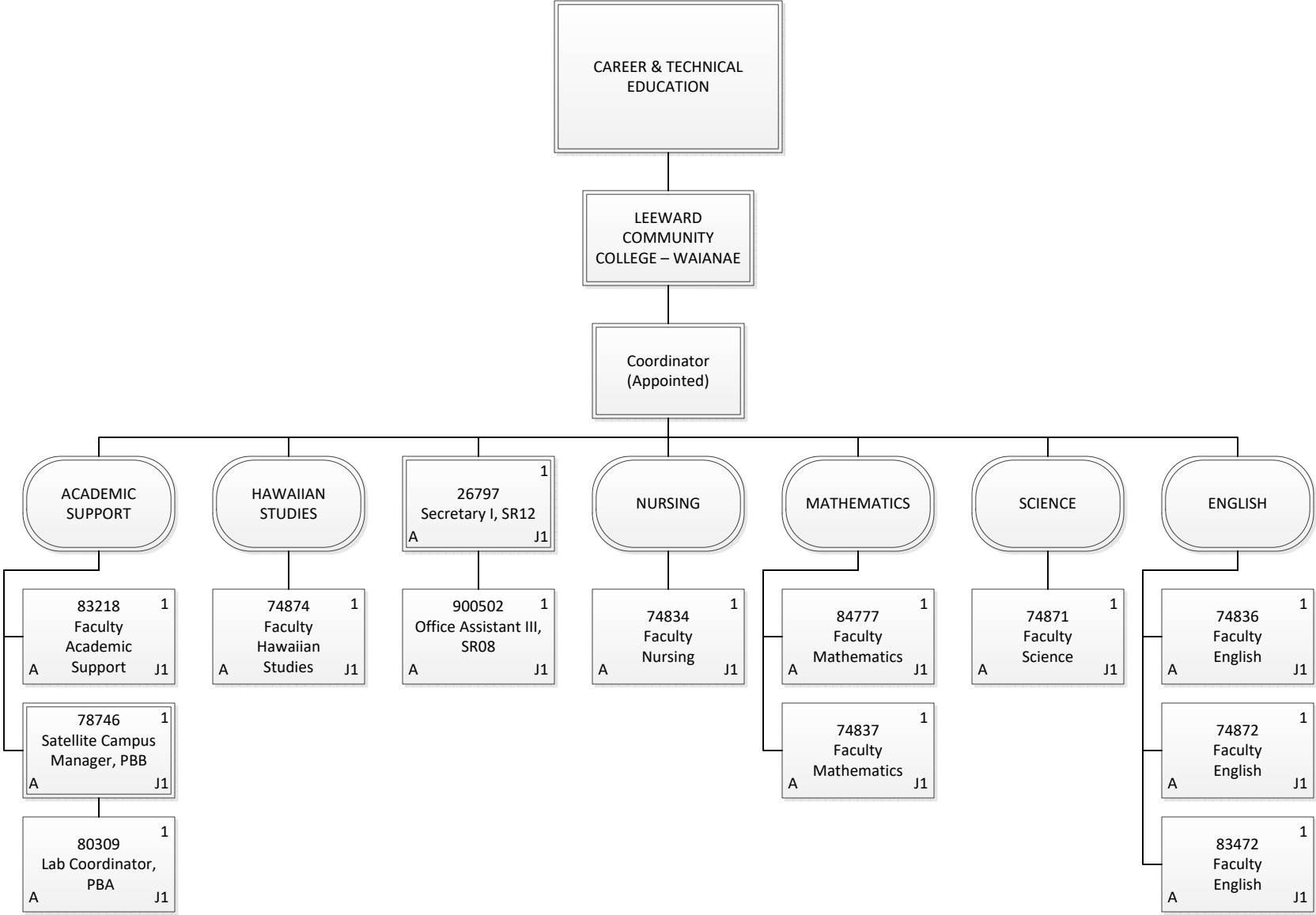
Permanent	2.00
General Fund	2.00
Grand Total	2.00



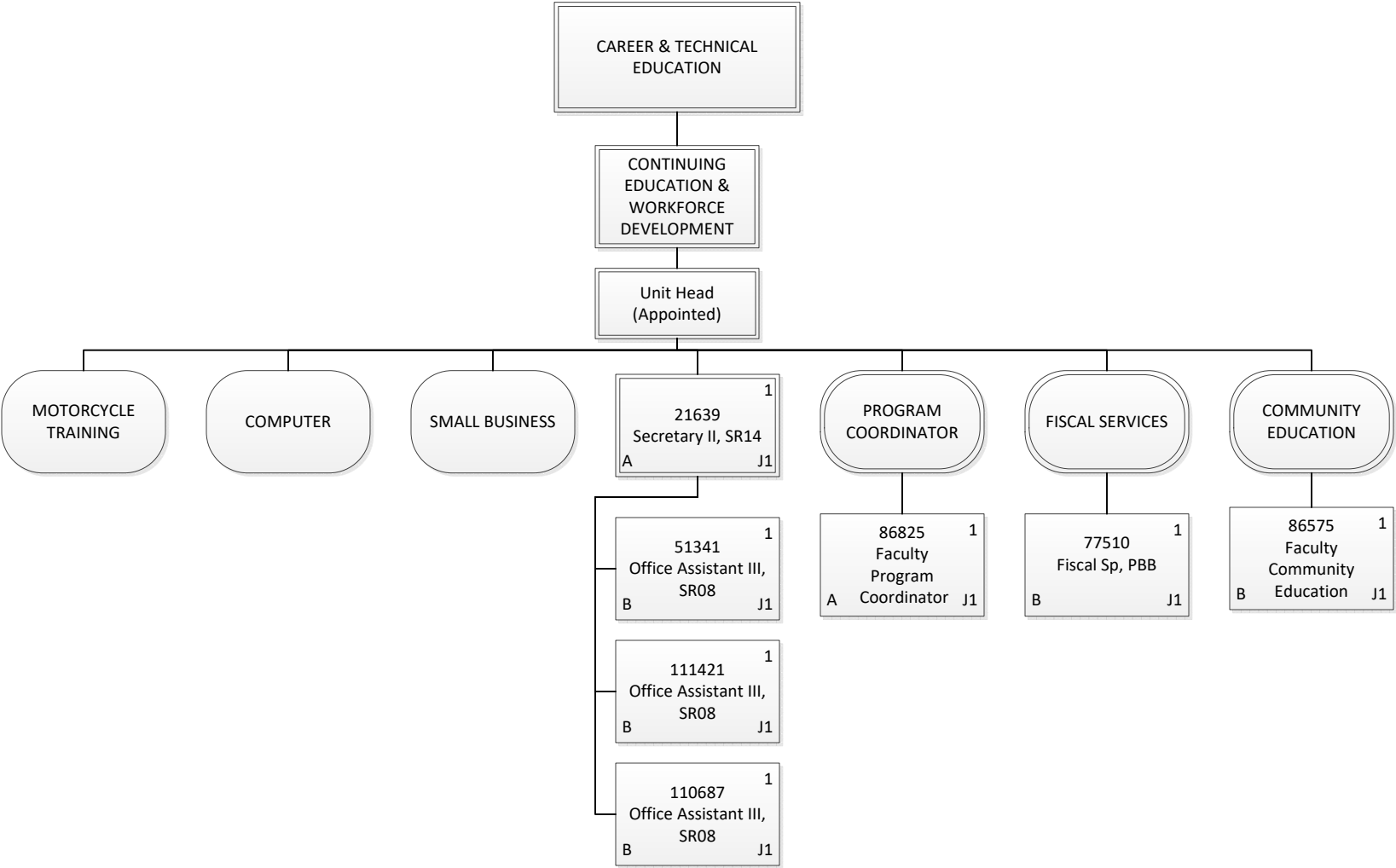
Permanent	23.00
General Fund	21.00
Special Fund	2.00
Grand Total	23.00



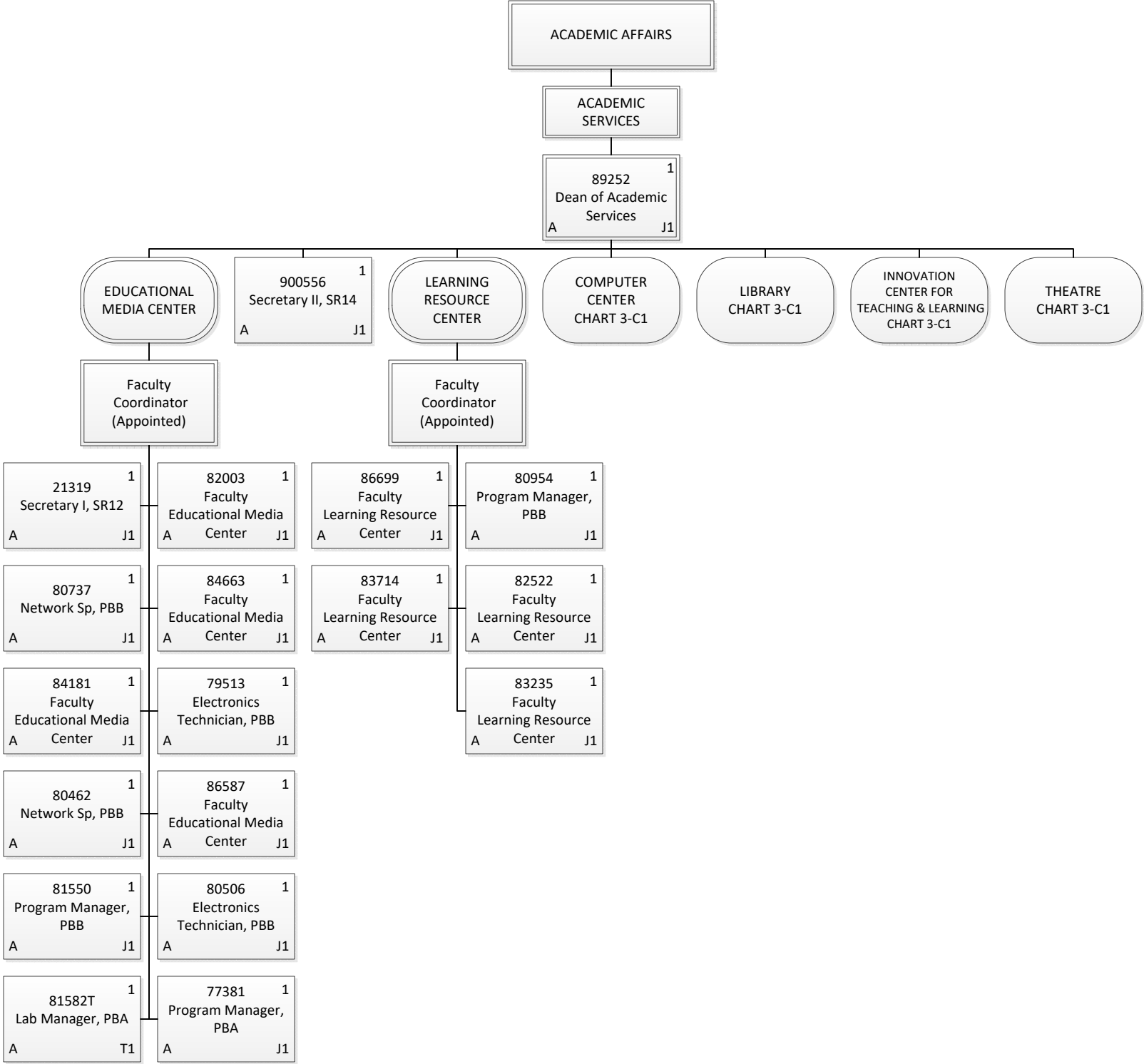
Permanent	15.00
General Fund	15.00
Grand Total	15.00



Permanent	13.00
General Fund	13.00
Grand Total	13.00



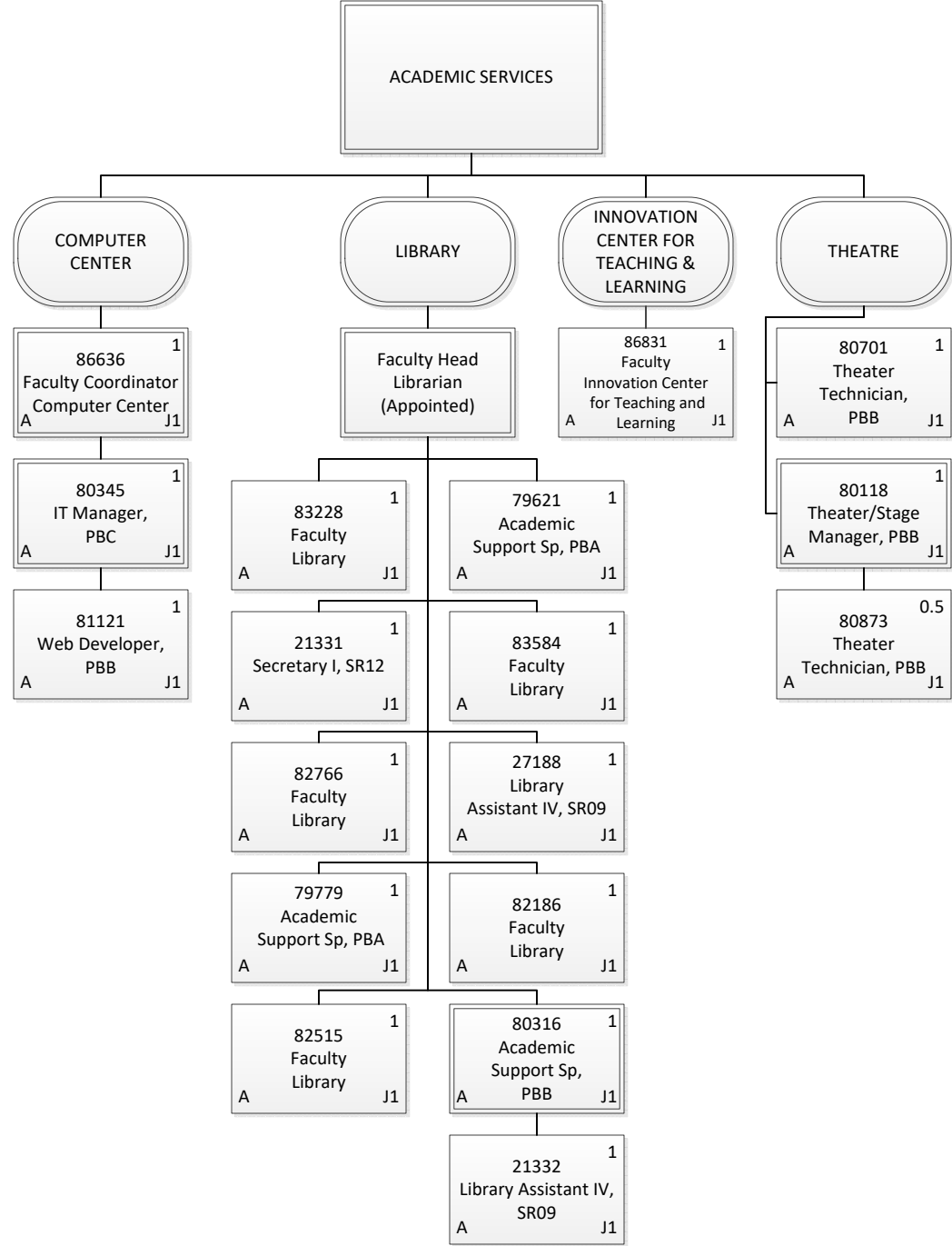
Permanent	7.00
General Fund	2.00
Special Fund	5.00
Grand Total	7.00



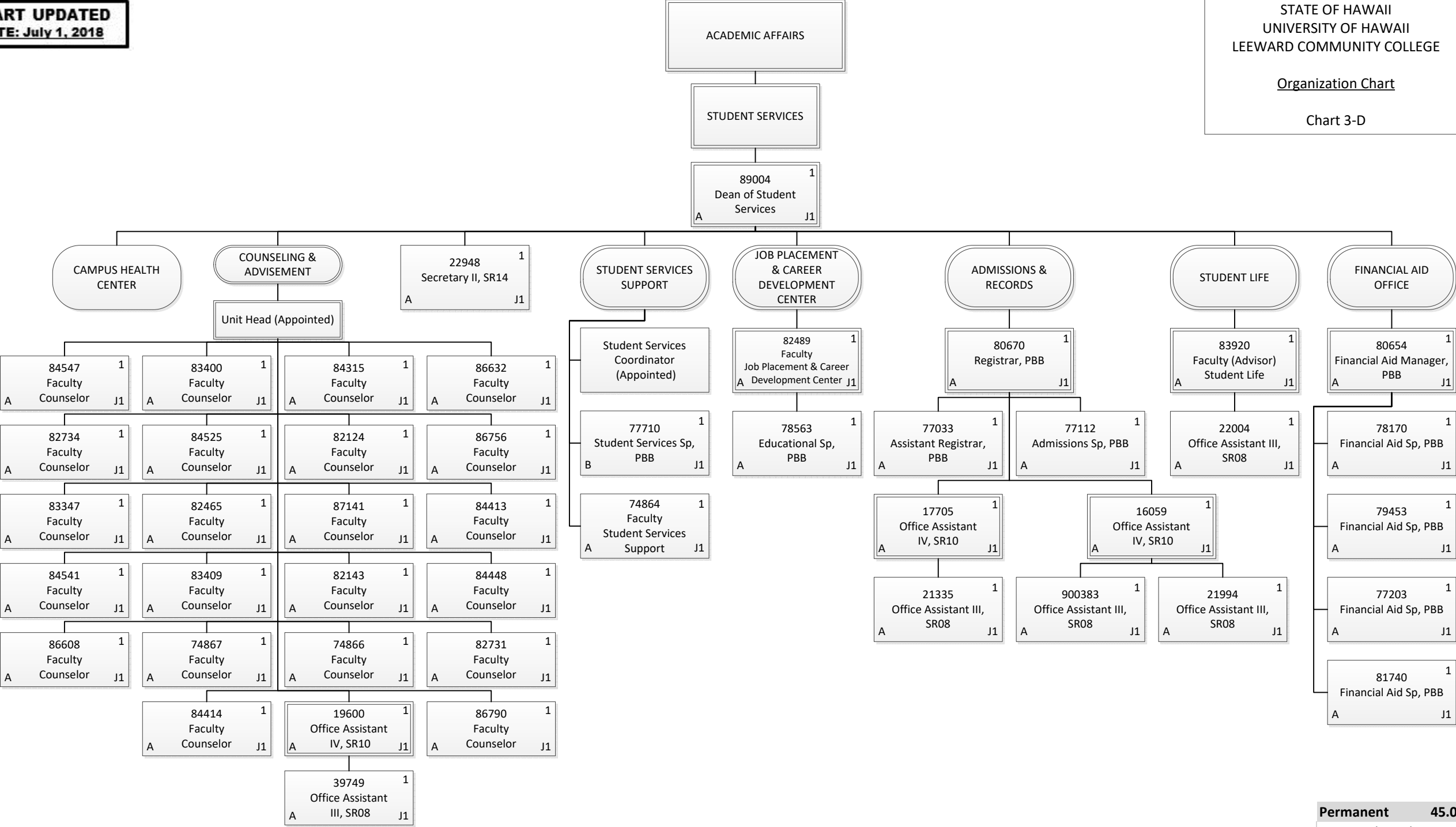
Permanent	18.00
General Fund	18.00
Temporary	1.00
General Fund	1.00
Grand Total	19.00

Organization Chart

Chart 3-C1



Permanent	17.50
General Fund	17.50
Grand Total	17.50

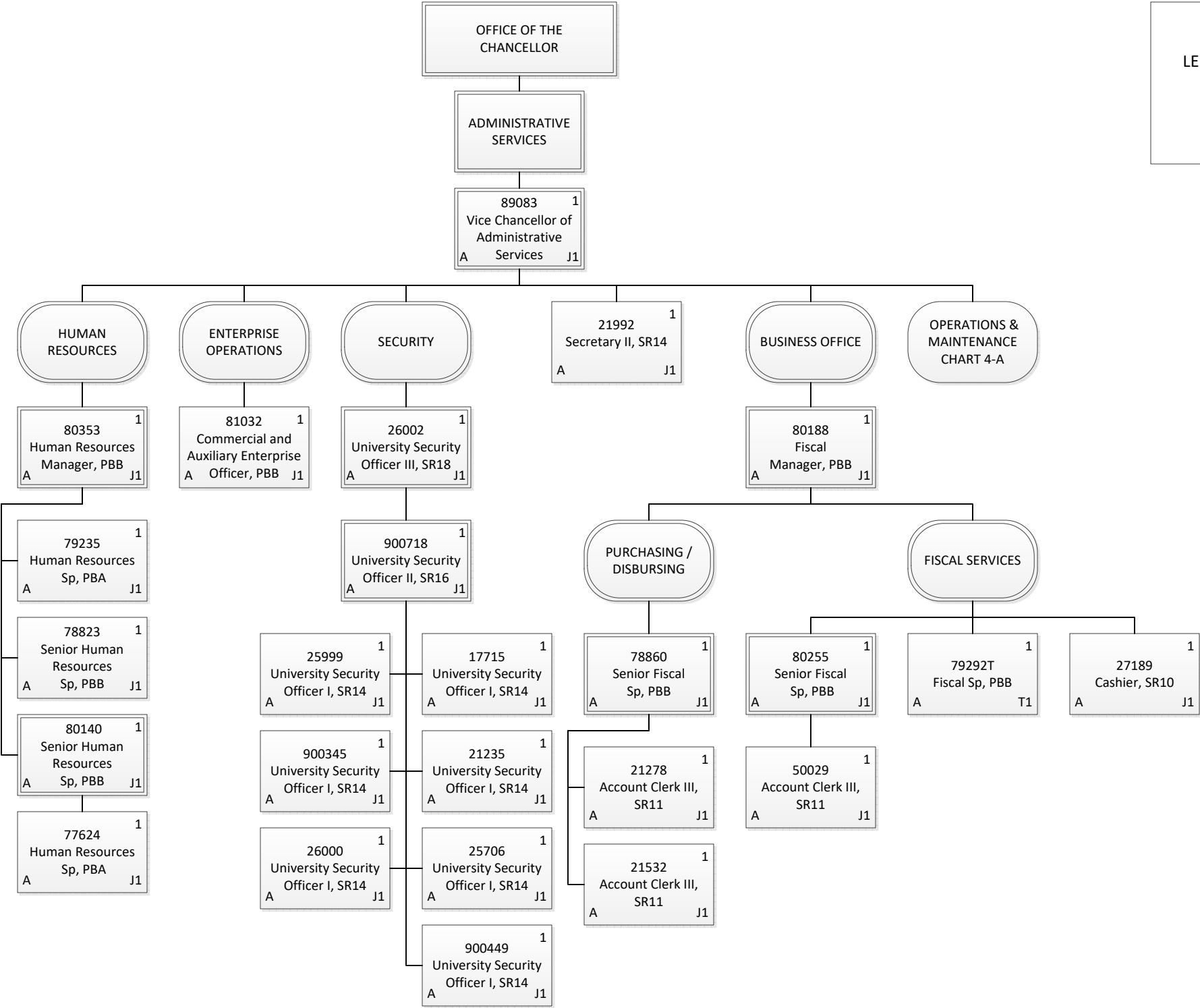


Permanent	45.00
General Fund	44.00
Special Fund	1.00
Grand Total	45.00



Organization Chart

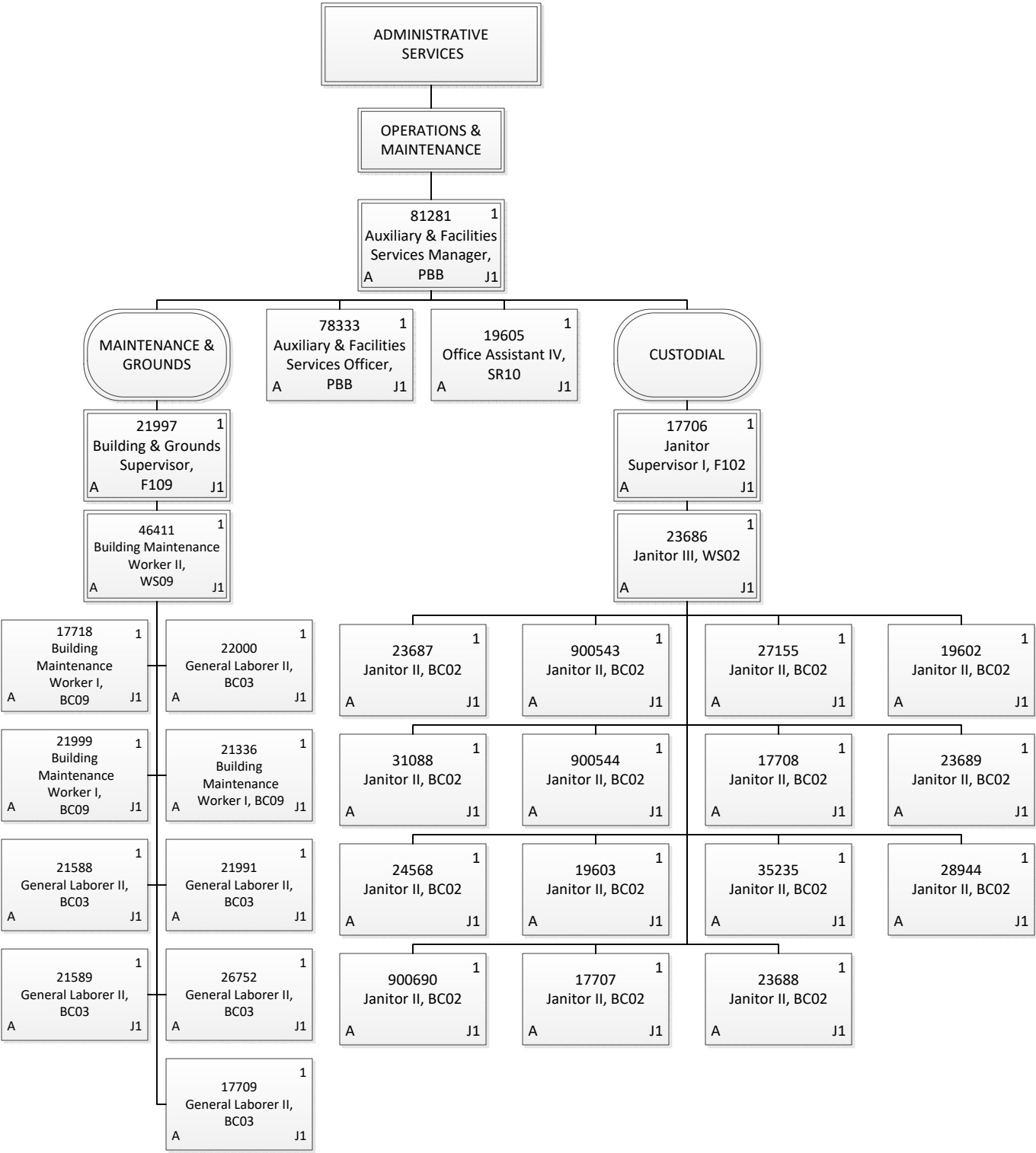
Chart 4



Permanent	24.00
General Fund	24.00
Temporary	1.00
General Fund	1.00
Grand Total	25.00

Organization Chart

Chart 4-A



Permanent	31.00
General Fund	31.00
Grand Total	31.00