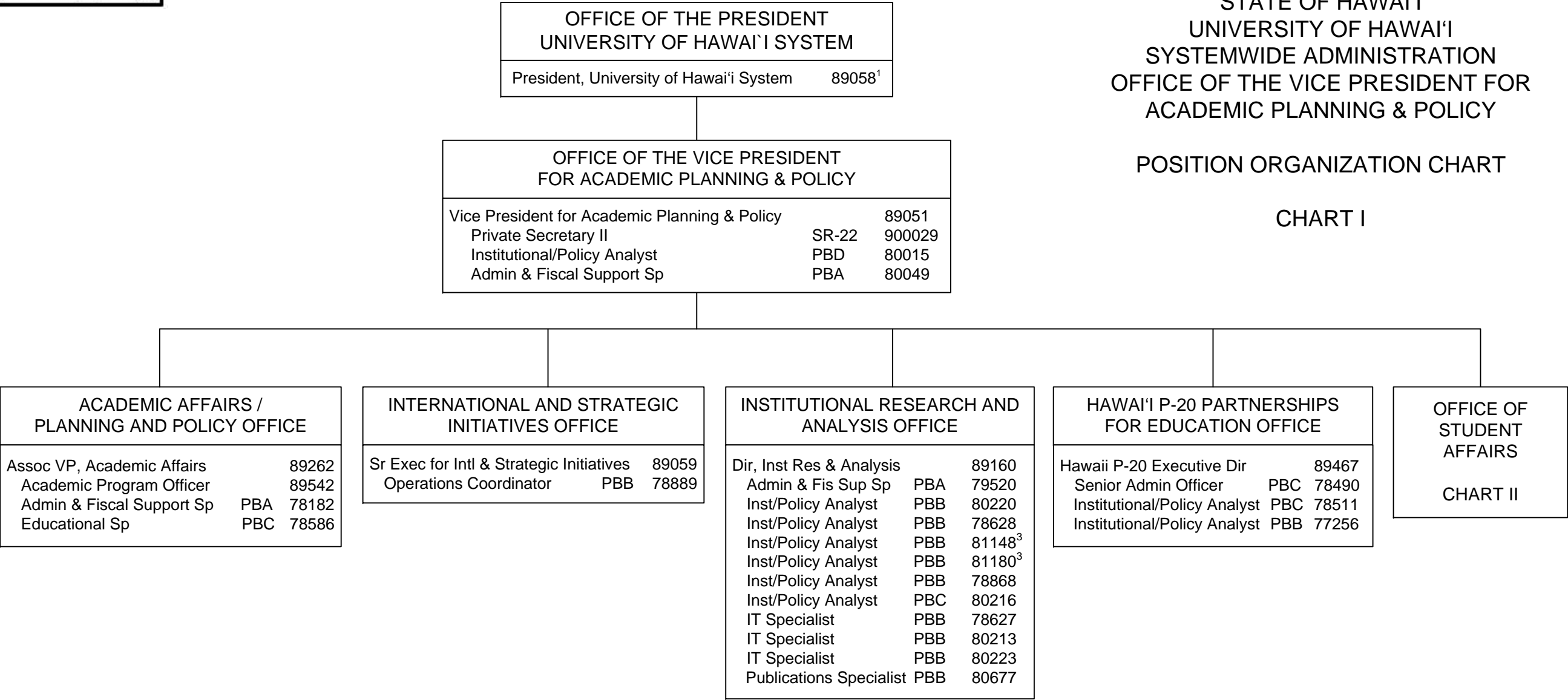


STATE OF HAWAI'I
UNIVERSITY OF HAWAI'I
SYSTEMWIDE ADMINISTRATION
OFFICE OF THE VICE PRESIDENT FOR
ACADEMIC PLANNING & POLICY

POSITION ORGANIZATION CHART

CHART I



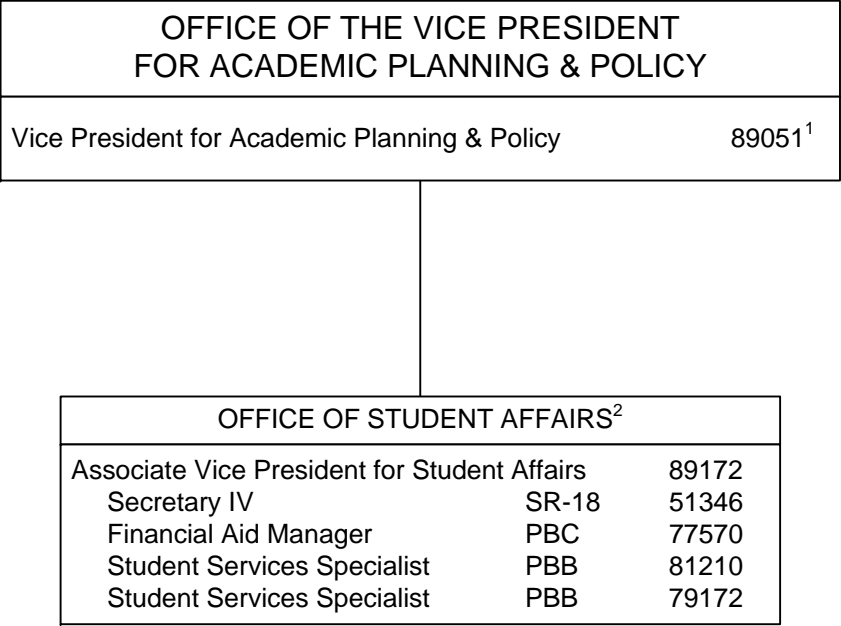
¹ Excluded from position count
² Appropriated but not established, 1 General Fund position: 99831F
³ Part of UOH 902 appropriation, reflected organizationally on this chart

	<u>Perm</u>
General Fund (UOH 903)	25.00 ²
General Fund (UOH 902)	2.00

STATE OF HAWAI'I
UNIVERSITY OF HAWAI'I
SYSTEMWIDE ADMINISTRATION
OFFICE OF THE VICE PRESIDENT FOR
ACADEMIC PLANNING & POLICY
OFFICE OF STUDENT AFFAIRS

POSITION ORGANIZATION CHART

CHART II



¹ Excluded from position count

² Serves as administrative liaison for the Hawaii Commission for National and Community Service and the National Corporation for Community Service