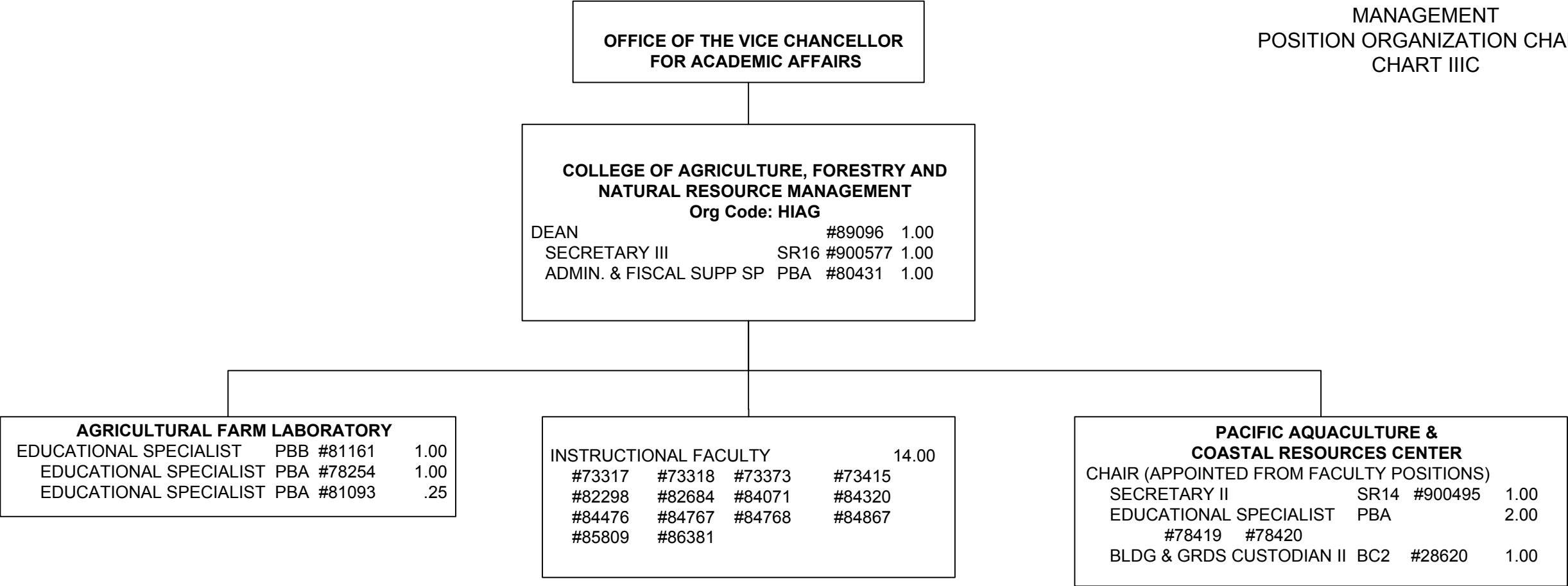
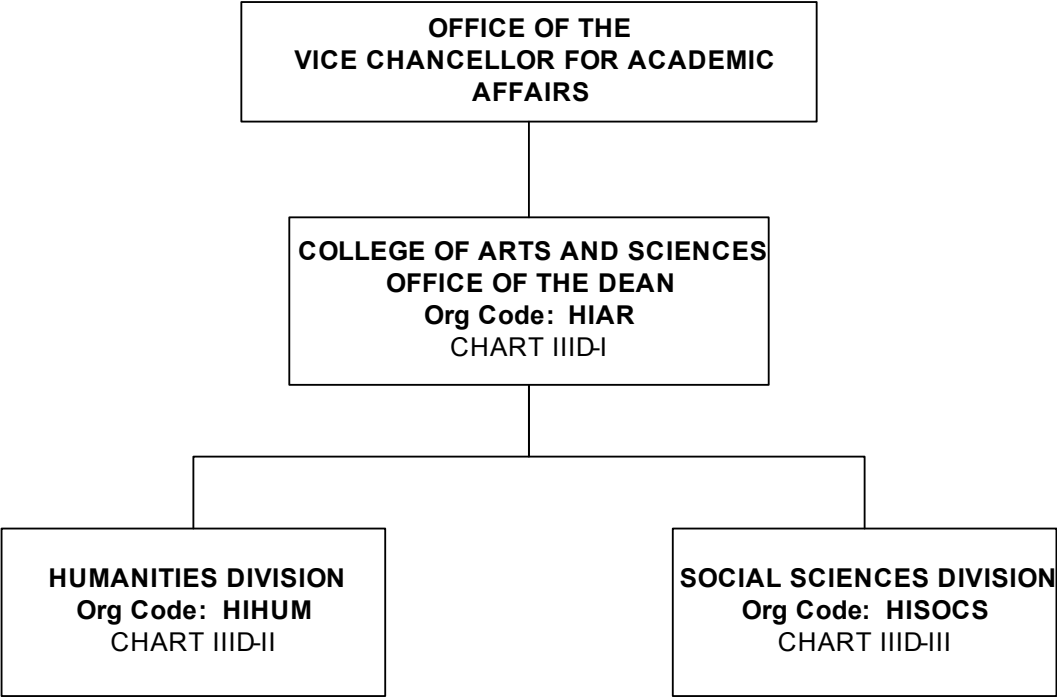
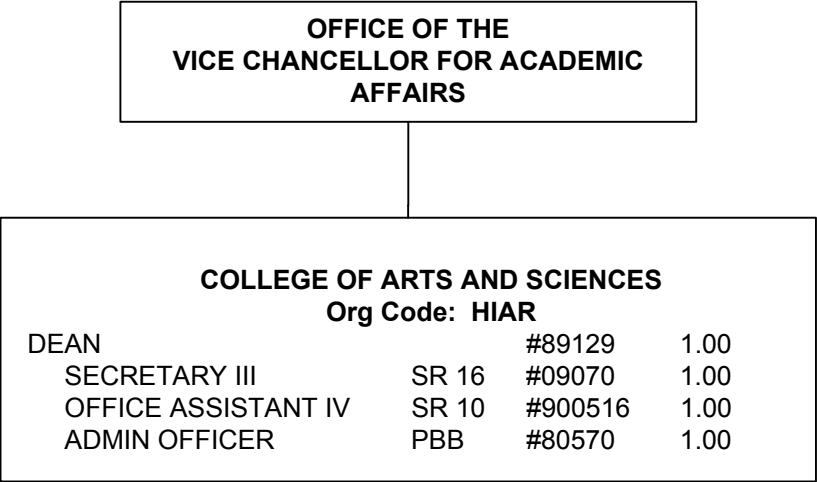


*General Funds FTE – 1.00 (Auth. Temp.)







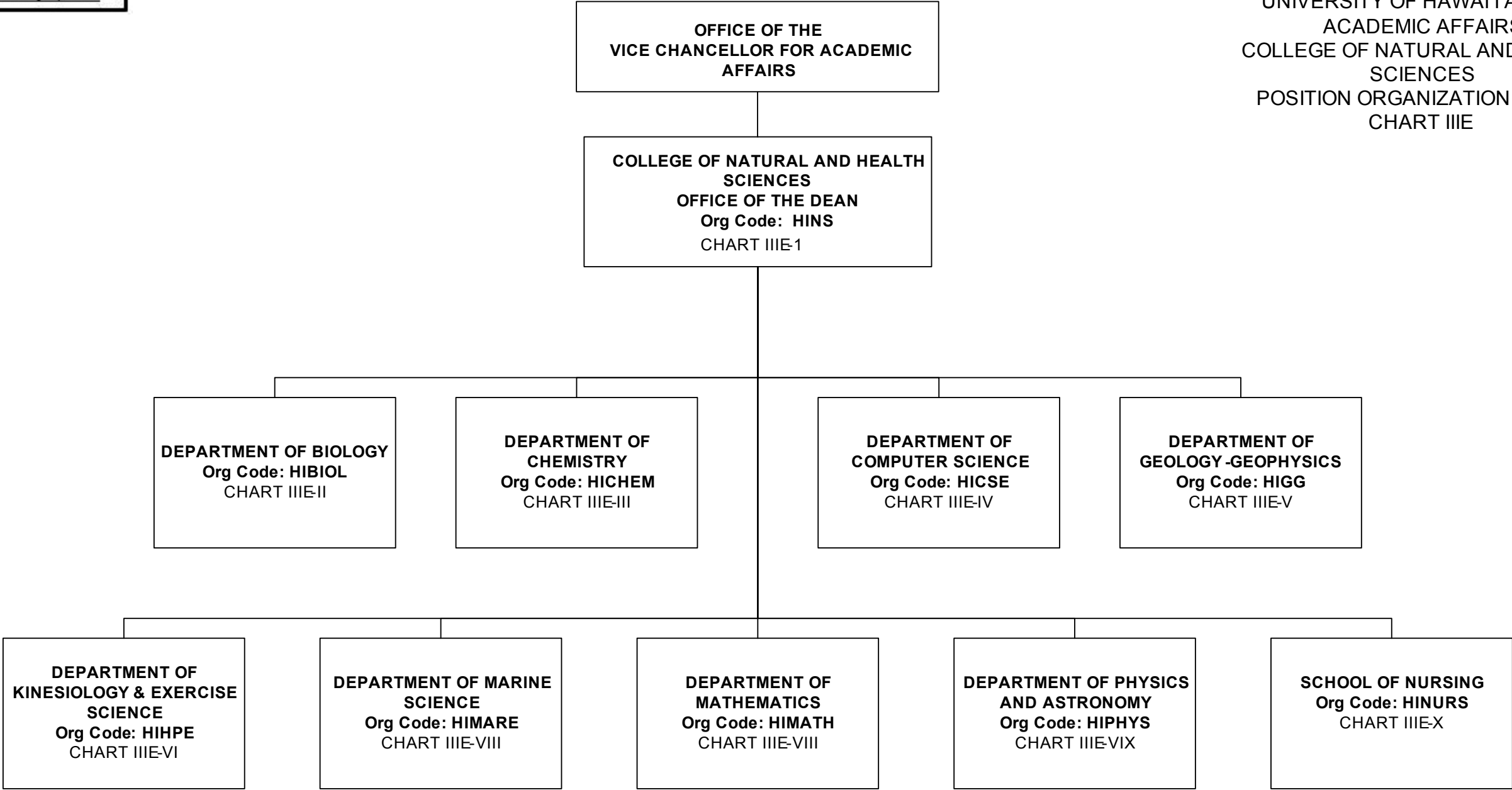
COLLEGE OF ARTS AND SCIENCES
OFFICE OF THE DEAN

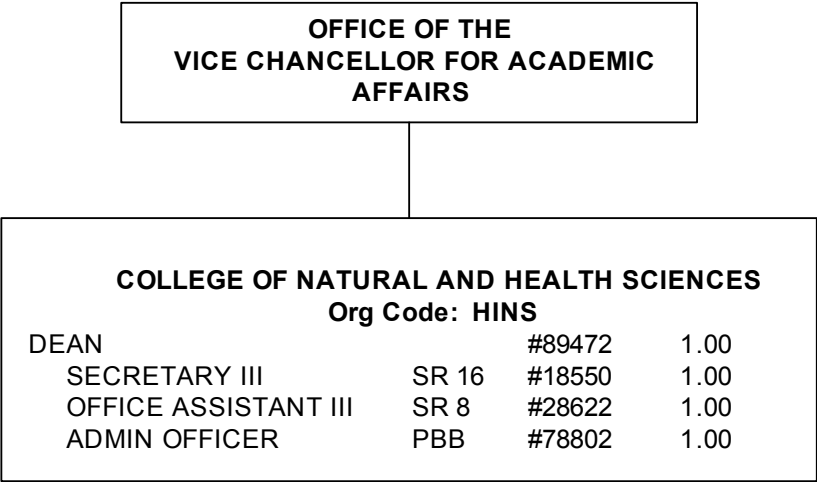
HUMANITIES DIVISION						
Org Code: HIHUM						
CHAIR (APPOINTED FROM FACULTY POSITIONS)						
SECRETARY II	SR14	#21531				1.00
OFFICE ASSISTANT III	SR8	#28618				1.00
ART Org Code: HIART						
FACULTY:	#82001	#82303	#82312	#82562	#84604	5.00
ASIAN PACIFIC LANGUAGES Org Code: HIAPL						
FACULTY:	#73407	#82832	#83971	#84038	#86365	5.00
COMMUNICATION Org Code: HICOM						
FACULTY:	#73256	#73343(S)	#82764	#82900	#83107	9.00
	#83655	#83784	#86411			
ENGLISH Org Code: HIENG						
FACULTY:	#73344(S)	#82171	#82553	#82563	#83928	7.00
	#86540					
EUROPEAN LANGUAGES FACULTY Org code: HIEL						
FACULTY:	#73346	#82833				2.00
PERFORMING ARTS Org Code: HIMUS						
FACULTY:	#82775	#84213	#84511	3.00		
PHILOSOPHY Org Code: HIPHIL						
FACULTY:	#73368(S)	#82352	#82478	#82654	#84509	6.00
				#86488		

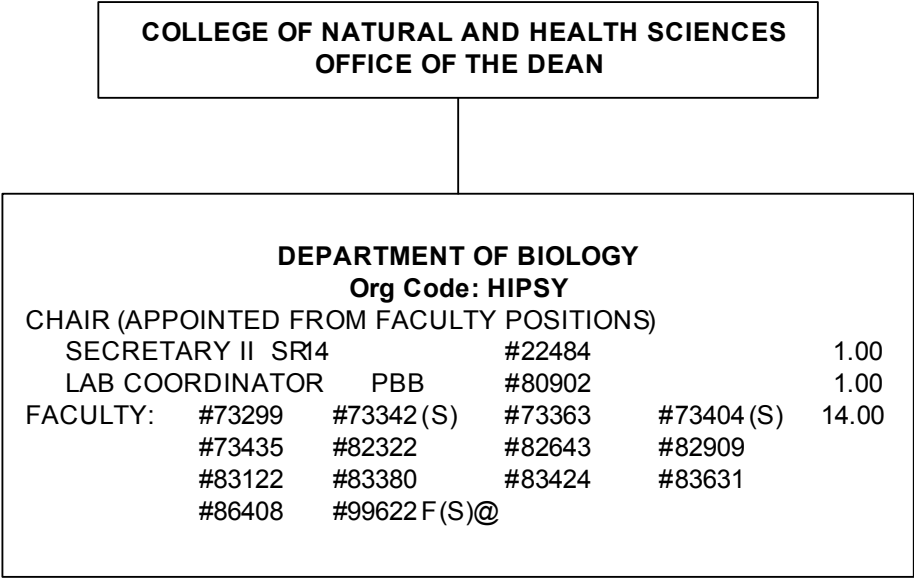
COLLEGE OF ARTS AND SCIENCES
OFFICE OF THE DEAN

SOCIAL SCIENCES DIVISION						
Org Code: HISOCS						
CHAIR (APPOINTED FROM FACULTY POSITIONS)						
SECRETARY II	SR14			#26666		1.00
OFFICE ASSISTANT III	SR8			#28623		1.00
ANTHROPOLOGY	Org Code: HIANTH					
FACULTY: #73345(S)	#73372	#82214	#82557	#83005	#83555	8.00
	#86481	#99616F(S)@				
SCHOOL OF EDUCATION	Org Code: HIED					
OFFICE ASSISTANT IV	SR10			#42269+		1.00
FACULTY: #73301	#73464	#82179	#83049	#83596	#83791	7.00
GEOGRAPHY	Org Code: HIGEOG					
FACULTY: #82899	#84766	#86404	#86414			4.00
HISTORY	Org Code: HIHIST					
FACULTY: #82009	#82556	#84198	#84285	#84483	#86360	6.00
POLITICAL SCIENCE	Org Code: HIPOLS					
FACULTY: #73356(S)	#82309	#82821	#83186	#84855		7.00
	#86445	#86450				
PSYCHOLOGY	Org Code: HIPSY					
FACULTY: #73254	#73362	#82349	#82542	#82847	#82933	11.00
	#83929	#83981	#86362	#86413	#86417	
SOCIOLOGY	Org Code: HISOC					
FACULTY: #73298	#73352	#82169	#84593	#86370		5.00

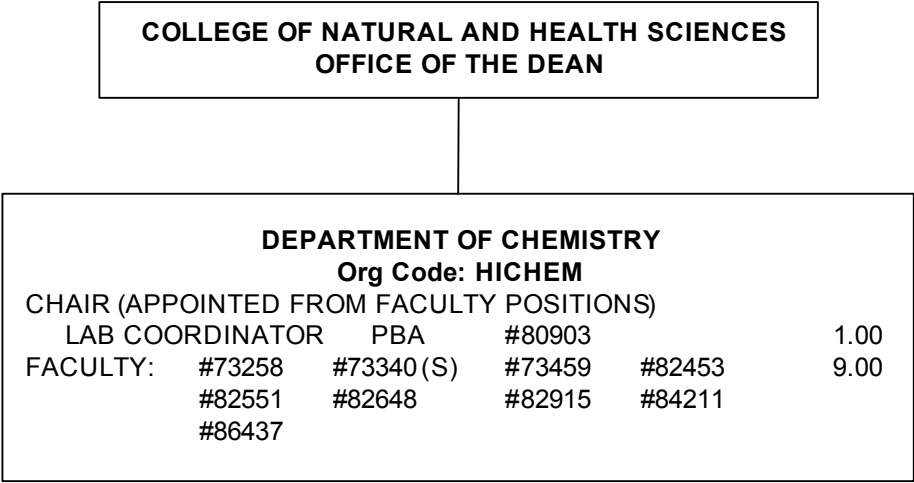
@ Pending Establishment
+ Reports to Department Chair

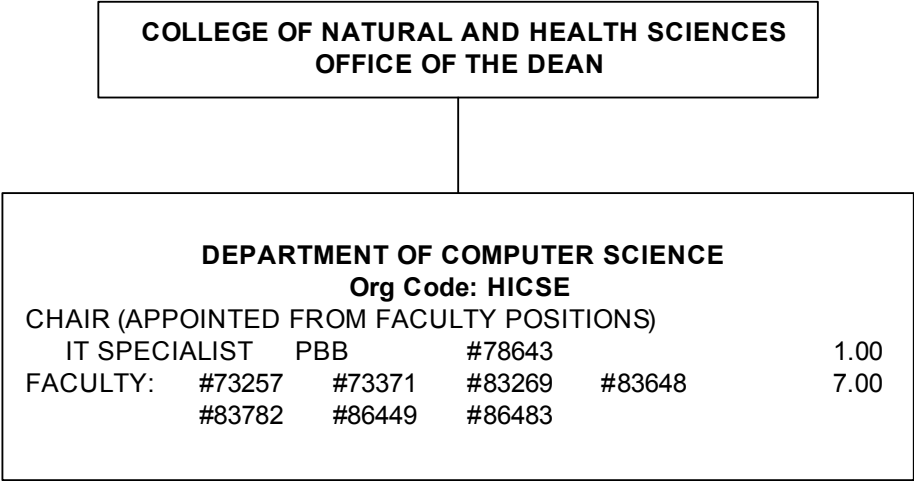


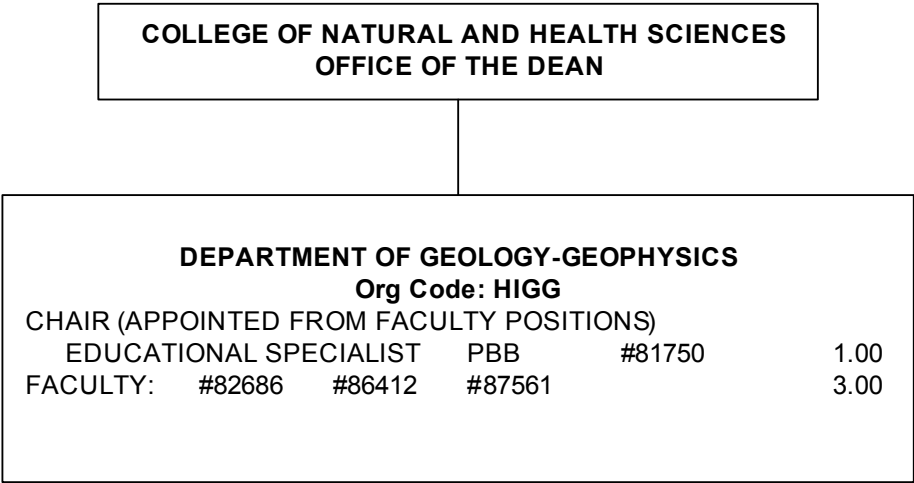


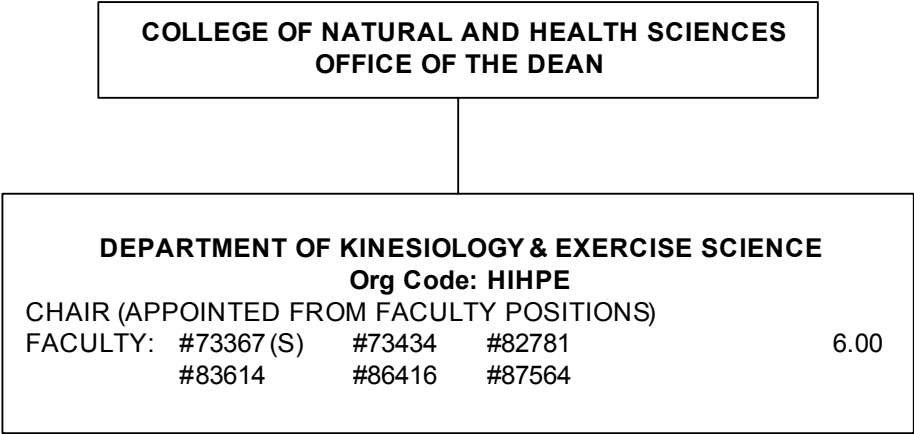


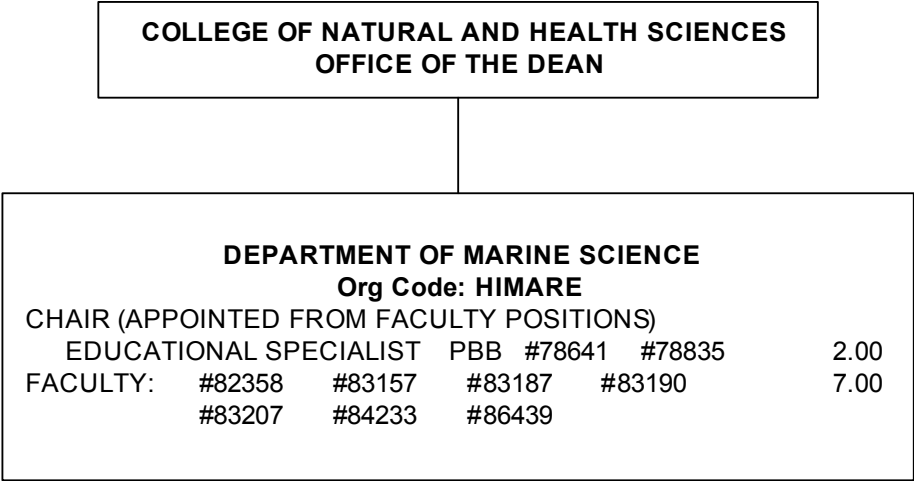
@ Pending Establishment

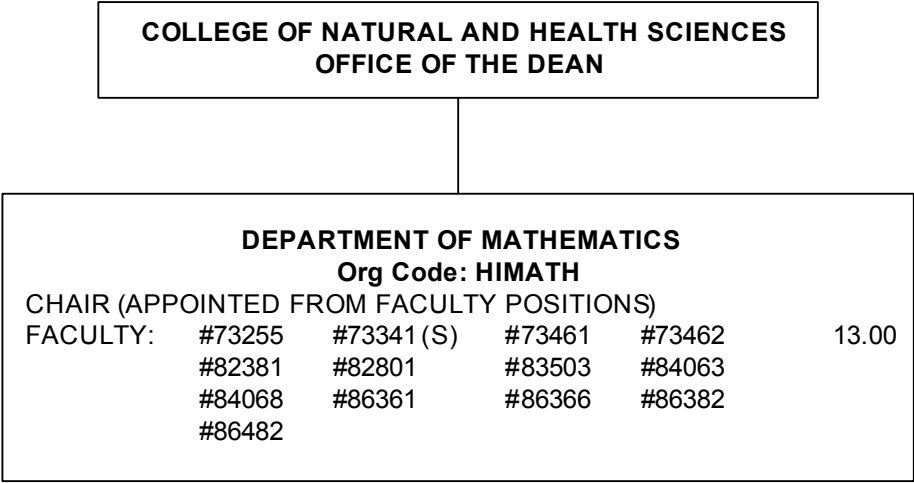


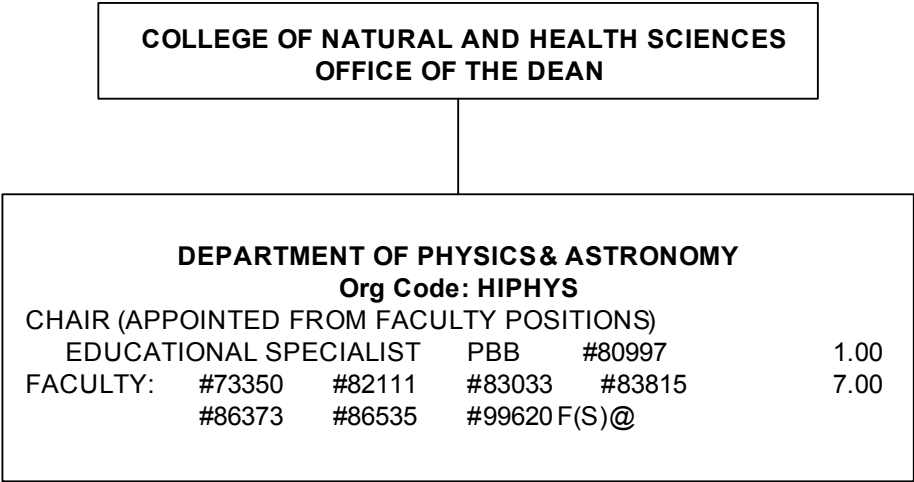




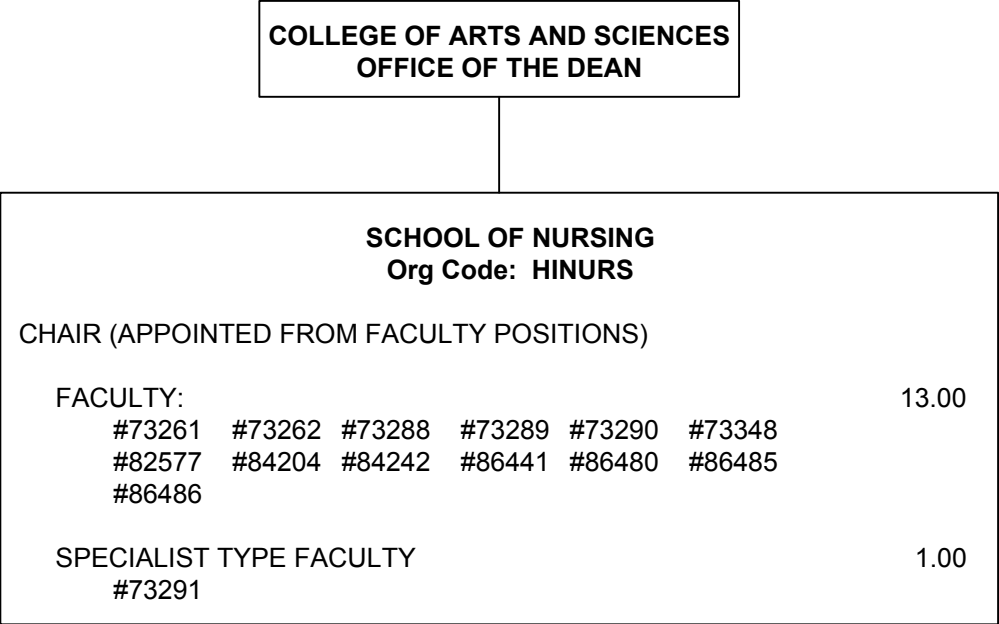




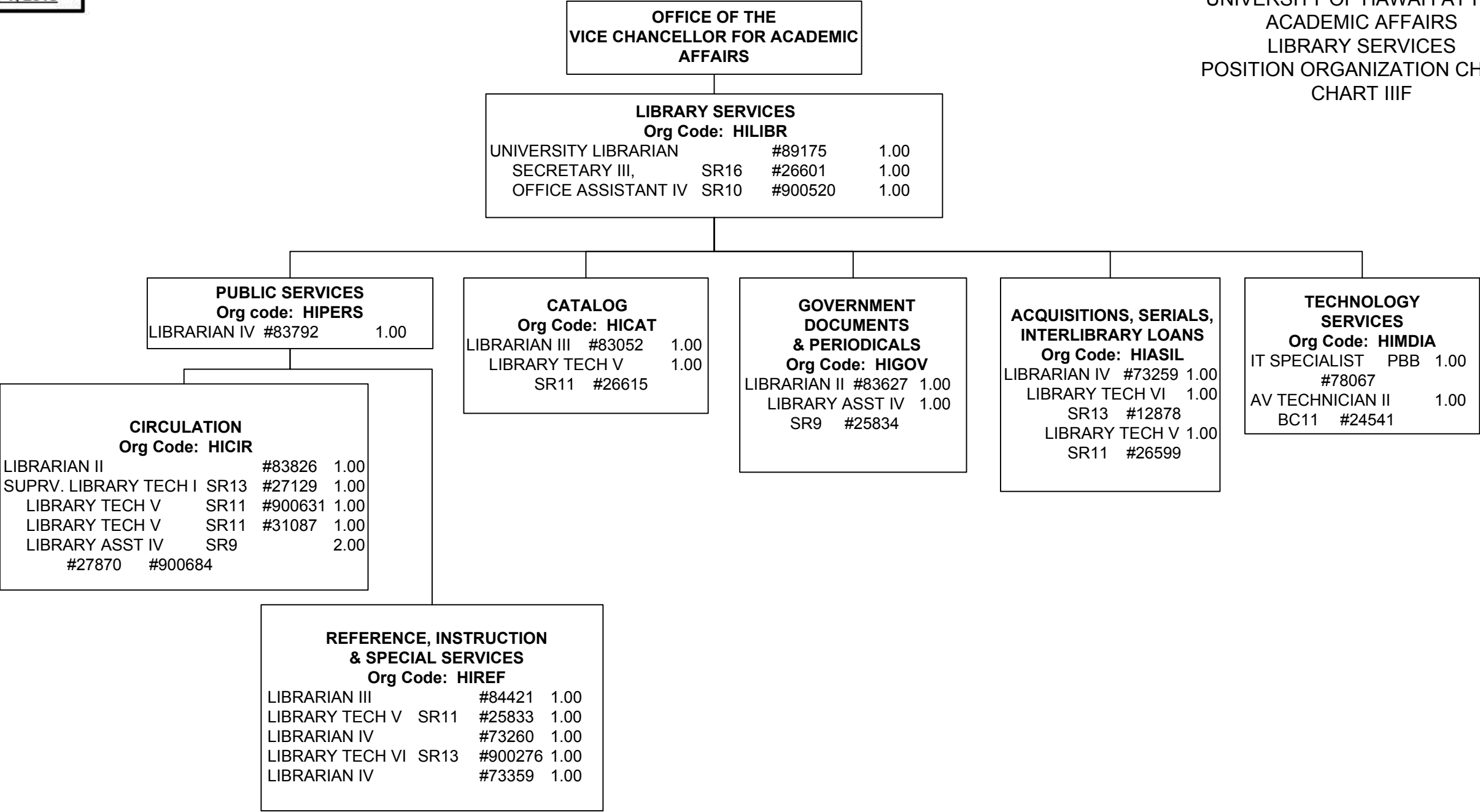


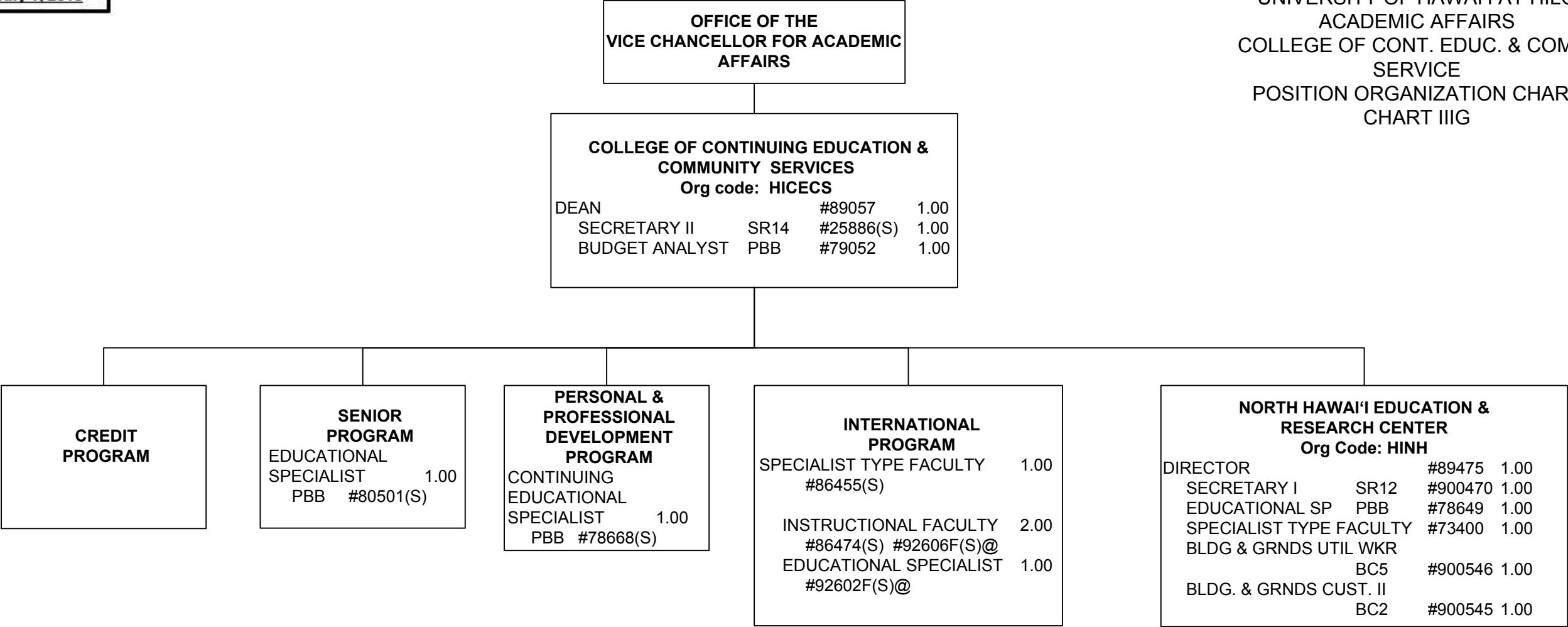


@ Pending Establishment



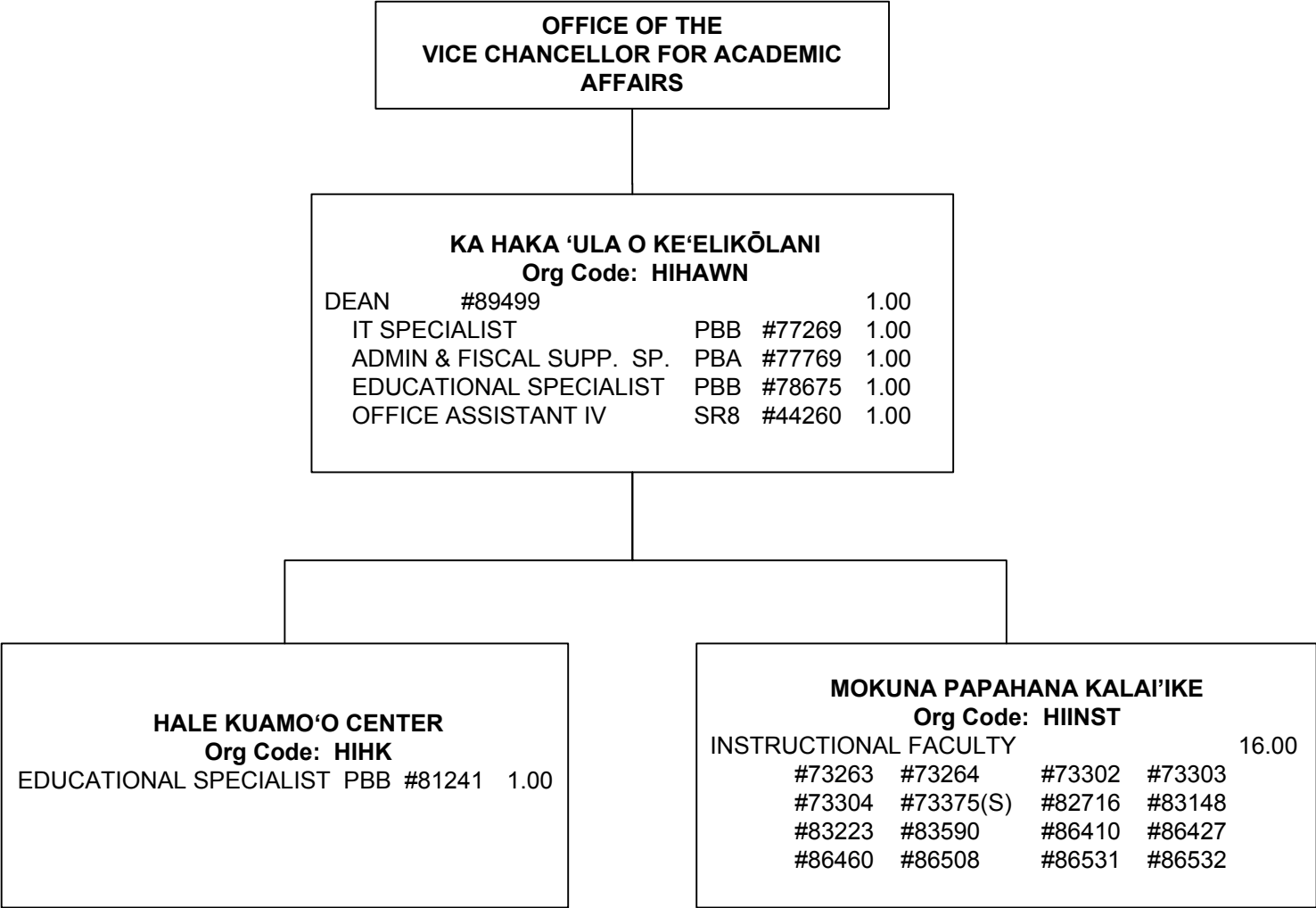
Footnote:
SPECIALIST TYPE FACULTY #86409 .50
(For count purposes only)

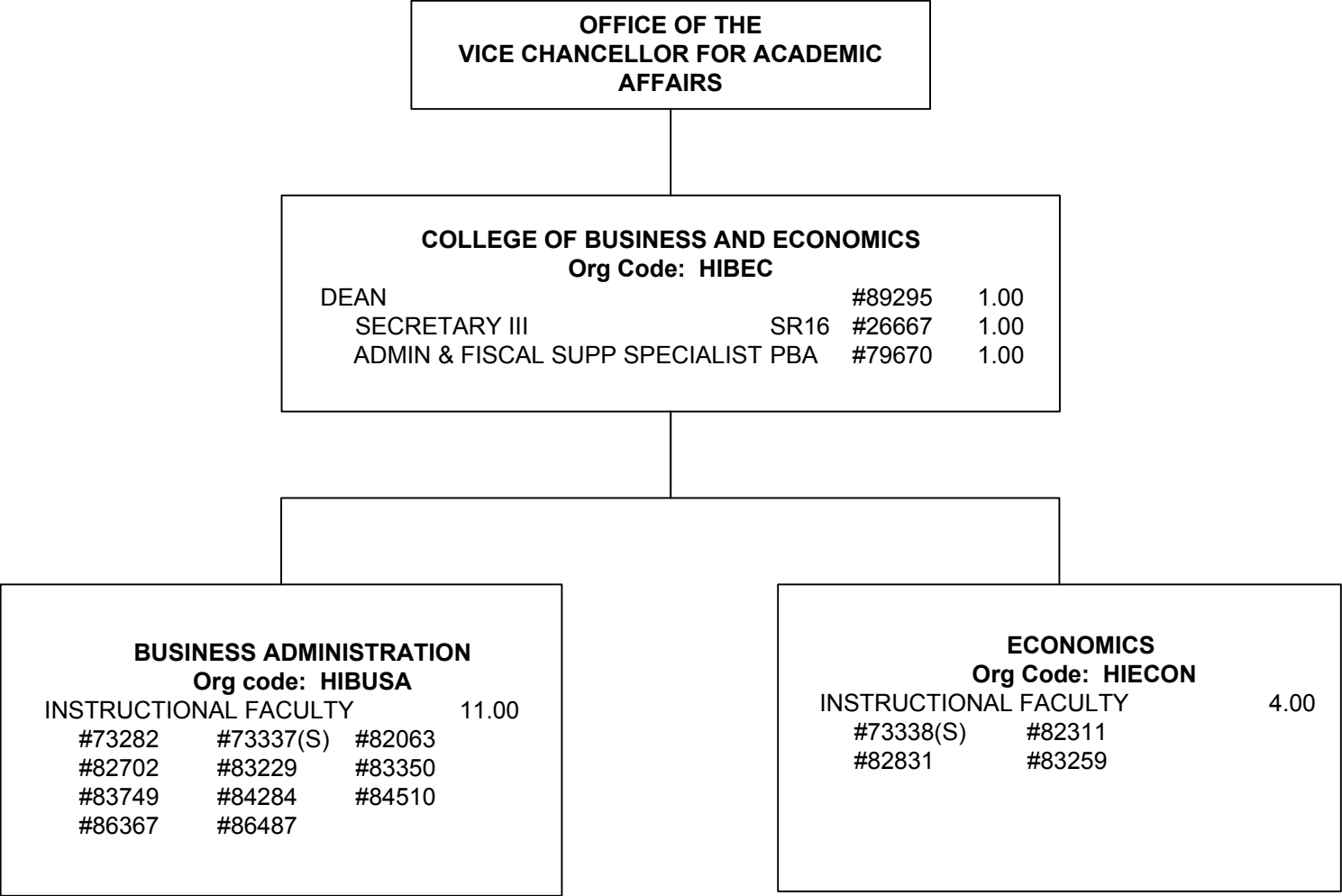




@ Pending Establishment

Footnote: (For count purposes only)
CLERK STENO II SR9 #32509(S) 1.00
SPECIALIST TYPE FACULTY #86473(S) 1.00
ACCOUNT CLERK III SR11 #900503(S) 1.00

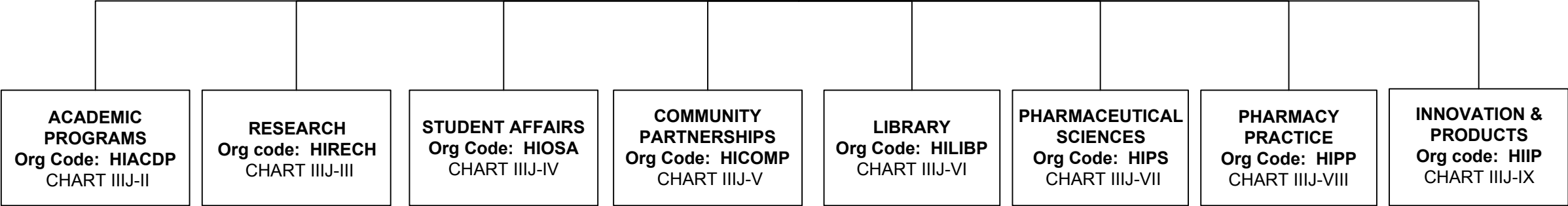




Footnote:
OFFICE ASSISTANT III SR8 #45475 1.00
(For count purposes only)

**OFFICE OF THE VICE CHANCELLOR
FOR ACADEMIC AFFAIRS**

**COLLEGE OF PHARMACY
OFFICE OF THE DEAN
Org Code: HIPHAR
CHART IIIJ-I**

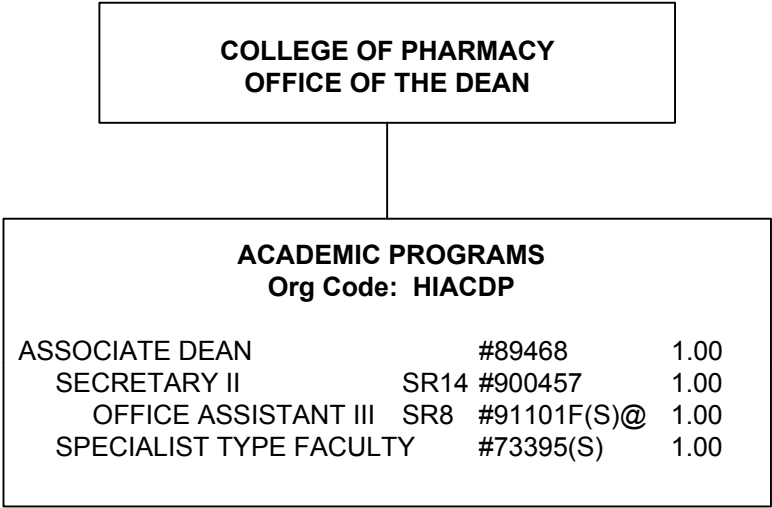


OFFICE OF THE VICE CHANCELLOR FOR
ACADEMIC AFFAIRS

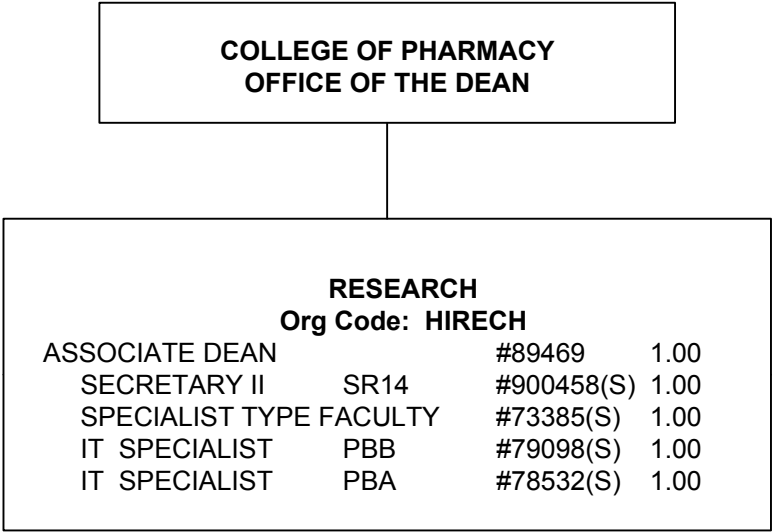
COLLEGE OF PHARMACY				
Org Code: HIPHAR				
DEAN		#89428		1.00
SECRETARY III	SR16	#900293		1.00
HUMAN RESOURCES SP	PBB	#79785(S)		1.00
BUDGET MANAGER	PBB	#78533(S)		1.00
ADMIN & FISCAL SUPP SP	PBA			2.00
	#77608(S)	#79128(S)		
IT SPECIALIST	PBB			2.00
	#79234(S)	#91612F(S)@		
SPECIALIST TYPE FACULTY				2.00
	#73357(S)	#73427		

@ Pending Establishment

Footnote:
OFFICE ASSISTANT III SR8 #900525(S) 1.00
(For count purposes only)

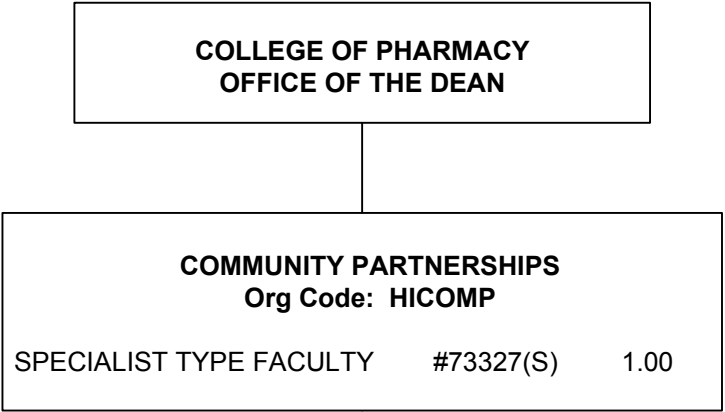


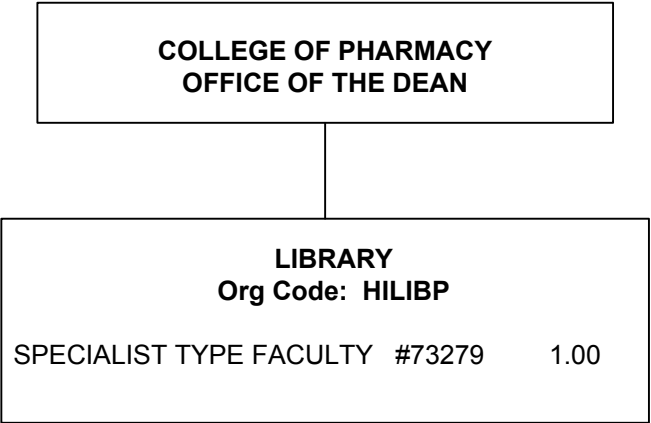
@ Pending Establishment

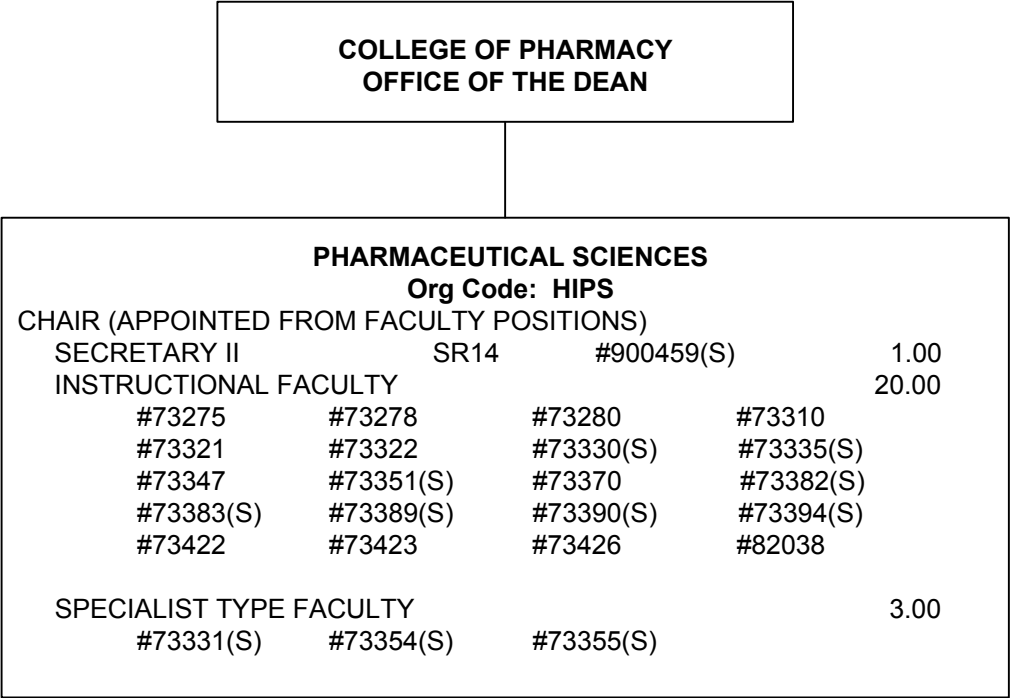


COLLEGE OF PHARMACY
OFFICE OF THE DEAN

STUDENT AFFAIRS Org code: HIOSA			
STUDENT SERVICES SPECIALIST	PBB #77435(S)	1.00	
STUDENT SERVICES SPECIALIST	PBB #78531(S)	1.00	
ACADEMIC SUPPORT SPECIALIST	PBB #79356(S)	1.00	
STUDENT SERVICES SPECIALIST	PBA #79256(S)	1.00	







Footnote:
OFFICE ASSISTANT III SR8 #900633(S) 1.00
(For count purposes only)

