

STATE OF HAWAIʻI

UNIVERSITY OF HAWAIʻI

UNIVERSITY OF HAWAIʻI AT MĀNOA

OFFICE OF THE VICE CHANCELLOR FOR ACADEMIC AFFAIRS

COLLEGES OF ARTS AND SCIENCES

COLLEGE OF ARTS AND HUMANITIES

Organization Chart

Chart I

DEPARTMENT TOTAL:	PERM	TEMP
General Funds:	199.25	3.00

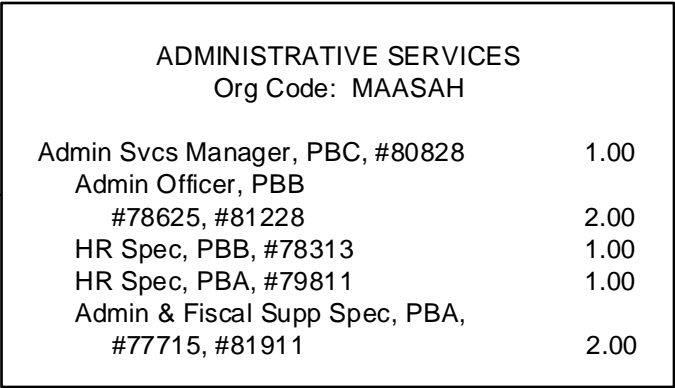
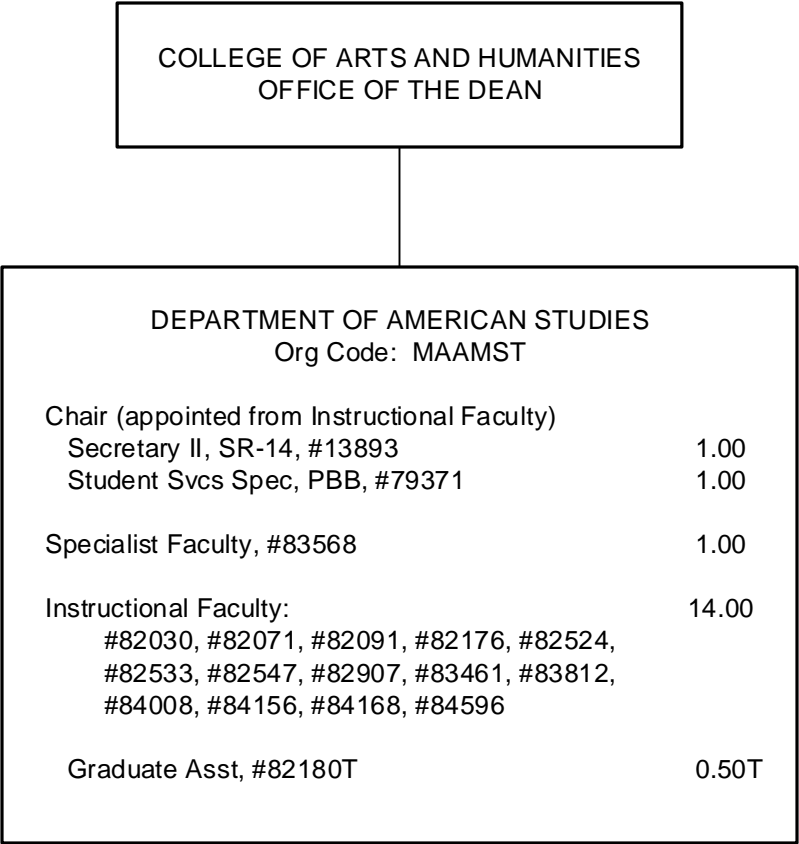


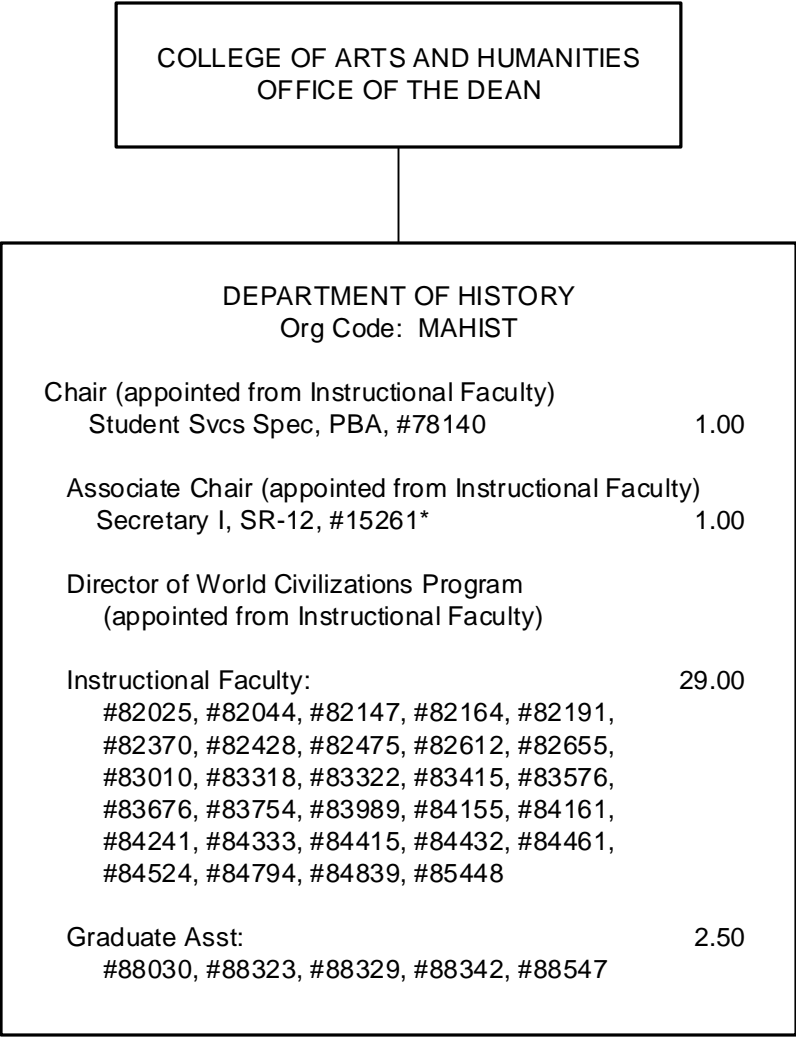
CHART TOTAL:	PERM	TEMP
General Funds:	11.00	--



COLLEGE OF ARTS AND HUMANITIES
OFFICE OF THE DEAN

DEPARTMENT OF ART AND ART HISTORY Org Code: MAARTH		
Chair (appointed from Instructional Faculty)		
Admin & Fiscal Supp Spec, PBA:		
#77525, #77920		2.00
Office Asst III, SR-08, #14366		1.00
Educational Spec, PBB:		
#80499, #80667, #80726, #81319		4.00
Machinist, PBB, #81041		
		1.00
Associate Chair (appointed from Instructional Faculty)		
Instructional Faculty:		
		19.00
#82067, #82142, #82187, #82275, #82445,		
#82501, #82583, #82584, #82886, #82995,		
#83230, #83315, #83323, #83588, #83752,		
#83956, #84050, #84232, #84464		
Graduate Asst:		
		3.00
#82514, #82601, #88120, #88152, #88242,		0.50T
#88456, #82136T		

STATE OF HAWAI'I
UNIVERSITY OF HAWAI'I
UNIVERSITY OF HAWAI'I AT MĀNOA
OFFICE OF THE VICE CHANCELLOR FOR ACADEMIC AFFAIRS
COLLEGES OF ARTS AND SCIENCES
COLLEGE OF ARTS AND HUMANITIES
DEPARTMENT OF ART AND ART HISTORY
Organization Chart
Chart II-B



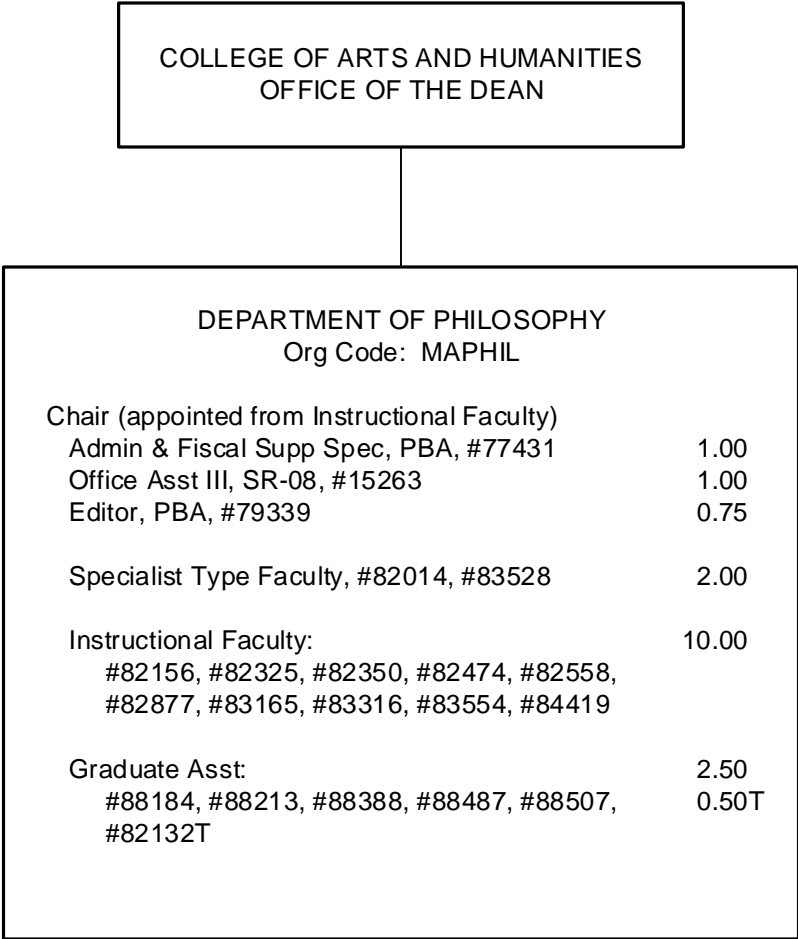
STATE OF HAWAI'I
UNIVERSITY OF HAWAI'I
UNIVERSITY OF HAWAI'I AT MĀNOA
OFFICE OF THE VICE CHANCELLOR FOR ACADEMIC AFFAIRS
COLLEGES OF ARTS AND SCIENCES
COLLEGE OF ARTS AND HUMANITIES
DEPARTMENT OF HISTORY
Organization Chart
Chart II-C

*To be redescribed

COLLEGE OF ARTS AND HUMANITIES
OFFICE OF THE DEAN

DEPARTMENT OF MUSIC Org Code: MAMUS		
Chair (appointed from Instructional Faculty)		
Secretary II, SR-14, #11959		1.00
Educational Spec, PBB: #80381, #80866 (0.50)		1.50
Admin & Fiscal Support Spec, PBA, #81033		1.00
Educational Spec, PBA, #81965		1.00
Associate Chair (appointed from Instructional Faculty)		
Instructional Faculty:		21.00
#82213, #82401, #82438, #82592, #82739, #82752, #82818, #82836, #82948, #83048, #83284, #83361, #83454, #83501, #83686, #84061, #84387, #84406, #84442, #84635, #85088		
Graduate Asst:		3.00
#88019, #88136, #88237, #88265, #88283, #88603		

STATE OF HAWAI'I
UNIVERSITY OF HAWAI'I
UNIVERSITY OF HAWAI'I AT MĀNOA
OFFICE OF THE VICE CHANCELLOR FOR ACADEMIC AFFAIRS
COLLEGES OF ARTS AND SCIENCES
COLLEGE OF ARTS AND HUMANITIES
DEPARTMENT OF MUSIC
Organization Chart
Chart II-D

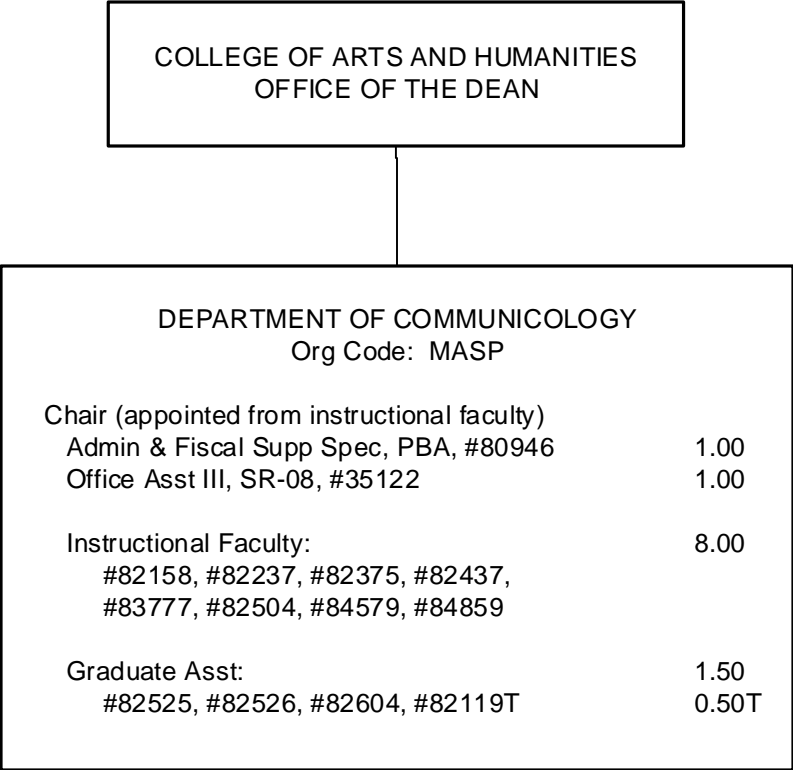


STATE OF HAWAI'I
UNIVERSITY OF HAWAI'I
UNIVERSITY OF HAWAI'I AT MĀNOA
OFFICE OF THE VICE CHANCELLOR FOR ACADEMIC AFFAIRS
COLLEGES OF ARTS AND SCIENCES
COLLEGE OF ARTS AND HUMANITIES
DEPARTMENT OF PHILOSOPHY
Organization Chart
Chart II-E

COLLEGE OF ARTS AND HUMANITIES
OFFICE OF THE DEAN

DEPARTMENT OF RELIGION Org Code: MAREL		
Chair (appointed from Instructional Faculty) Secretary II, SR-14, #15012		1.00
Instructional Faculty: #82065, #82203, #82205, #82340, #84056, #84089		6.00
Graduate Asst: #82189, #82590, #88026, #88084, #88093, #88282, #88556		3.50

STATE OF HAWAI'I
UNIVERSITY OF HAWAI'I
UNIVERSITY OF HAWAI'I AT MĀNOA
OFFICE OF THE VICE CHANCELLOR FOR ACADEMIC AFFAIRS
COLLEGES OF ARTS AND SCIENCES
COLLEGE OF ARTS AND HUMANITIES
DEPARTMENT OF RELIGION
Organization Chart
Chart II-F

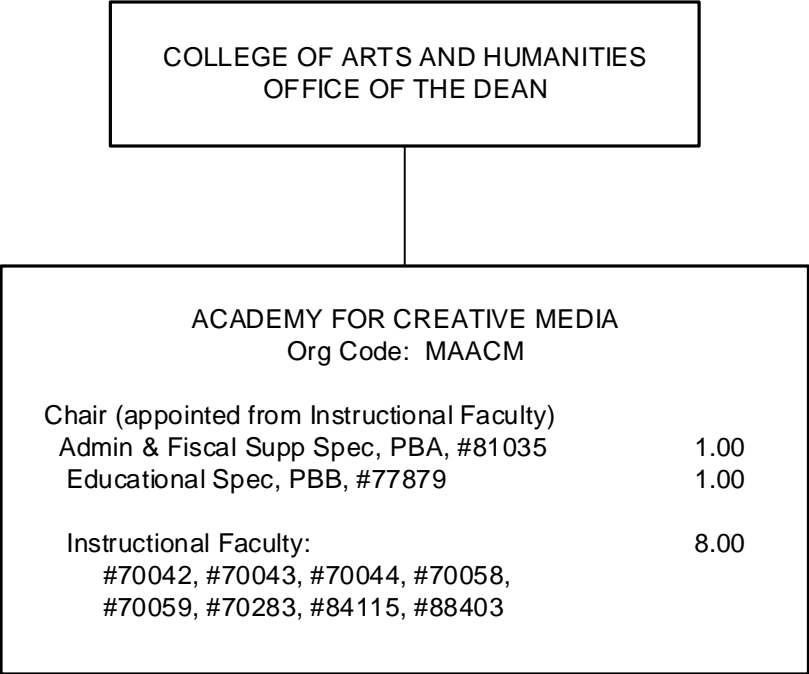


STATE OF HAWAIʻI
UNIVERSITY OF HAWAIʻI
UNIVERSITY OF HAWAIʻI AT MĀNOA
OFFICE OF THE VICE CHANCELLOR FOR ACADEMIC AFFAIRS
COLLEGES OF ARTS AND SCIENCES
COLLEGE OF ARTS AND HUMANITIES
DEPARTMENT OF COMMUNICOLOGY
Organization Chart
Chart II-G

COLLEGE OF ARTS AND HUMANITIES
OFFICE OF THE DEAN

STATE OF HAWAI'I
UNIVERSITY OF HAWAI'I
UNIVERSITY OF HAWAI'I AT MĀNOA
OFFICE OF THE VICE CHANCELLOR FOR ACADEMIC AFFAIRS
COLLEGES OF ARTS AND SCIENCES
COLLEGE OF ARTS AND HUMANITIES
DEPARTMENT OF THEATRE AND DANCE
Organization Chart
Chart II-H

DEPARTMENT OF THEATRE AND DANCE		
Org Code: MATD		
Chair (appointed from Instructional Faculty)		
Secretary II, SR-14, #13647		1.00
Theater/Stage Manager, PBB, #80119		1.00
Theater Technician, PBB:		3.00
#78466, #80700, #81269		
Operations Coordinator, PBA, #80994	1.00	
Director of Dance Program		
(appointed from Instructional Faculty)		
Admin & Fiscal Supp Spec, PBA, #77076	1.00	
Instructional Faculty:	17.00	
#82110, #82161, #82227, #82234, #82260,		
#82302, #82640, #83250, #83252, #83337,		
#83436, #83439, #83591, #84095, #84434,		
#84574, #84678		
Graduate Asst:		
#82419, #82549, #82568, #88000, #88051,	6.00	
#88052, #88053, #88127, #88207, #88211,	1.00T	
#88246, #88324, #82117T, #82123T		



STATE OF HAWAII
UNIVERSITY OF HAWAII
UNIVERSITY OF HAWAII AT MANOA
OFFICE OF THE VICE CHANCELLOR FOR ACADEMIC AFFAIRS
COLLEGES OF ARTS AND SCIENCES
COLLEGE OF ARTS AND HUMANITIES
ACADEMY FOR CREATIVE MEDIA
Organization Chart
Chart II-I