

STATE OF HAWAII
UNIVERSITY OF HAWAII
UNIVERSITY OF HAWAII AT MANOA
OFFICE OF THE VICE CHANCELLOR FOR
ACADEMIC AFFAIRS
COLLEGES OF ARTS AND SCIENCES
COLLEGE OF SOCIAL SCIENCES
ORGANIZATIONAL CHART
CHART I

DEPARTMENT TOTAL:	PERM	TEMP
General Funds:	235.25	3.75

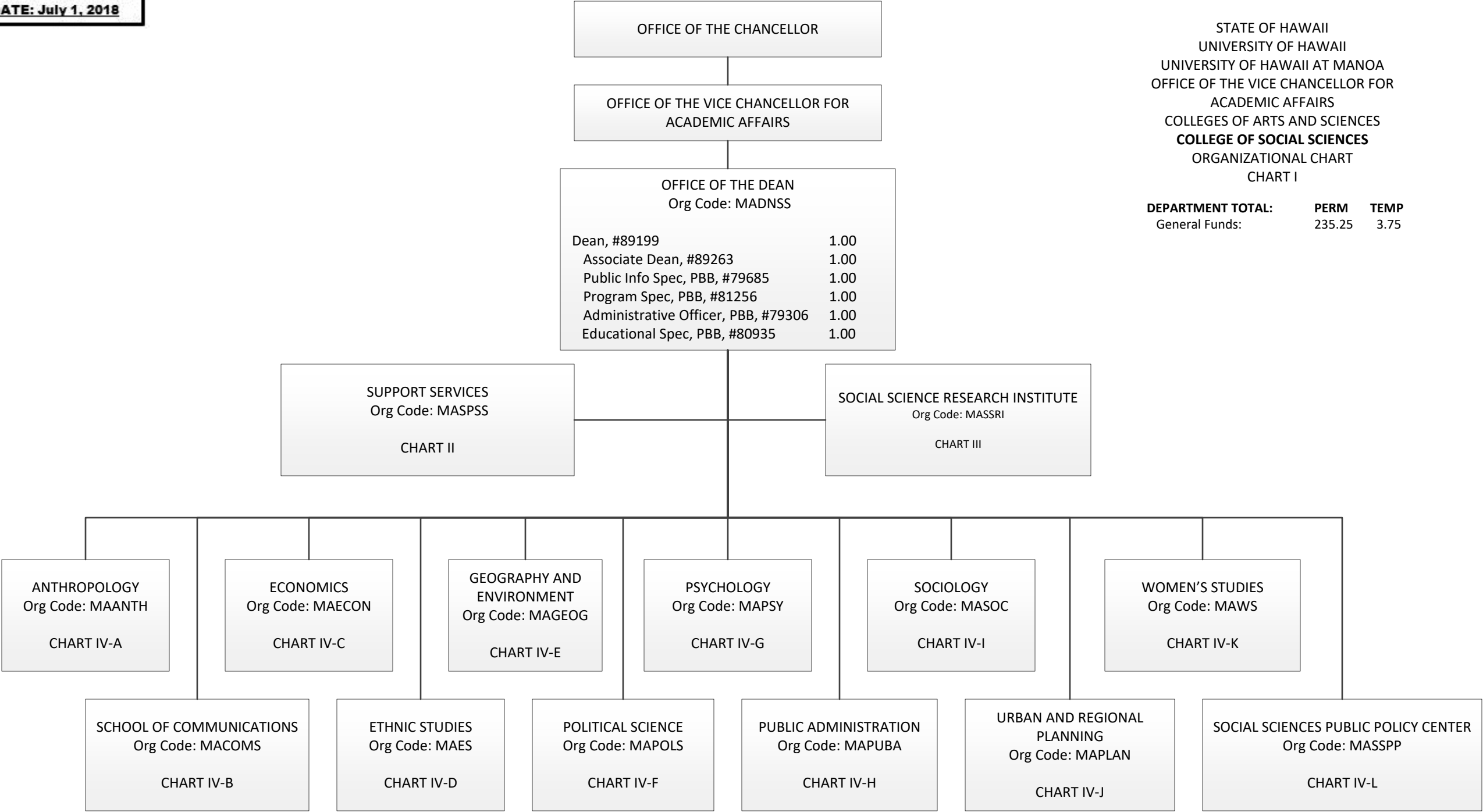
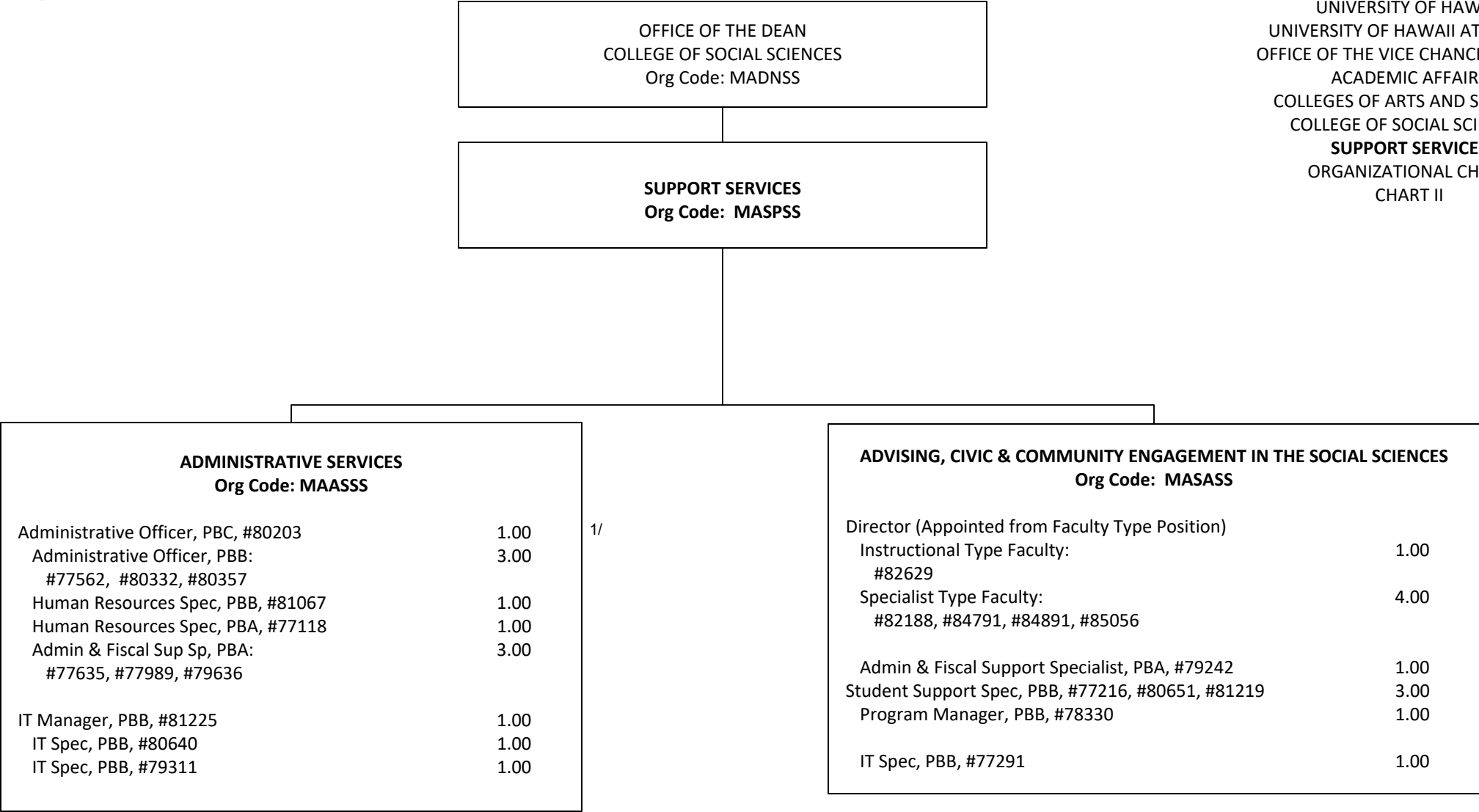


CHART TOTAL:	PERM	TEMP
General Funds:	6.00	--



1/ Admin Ofcr, #80203 in Administrative Services provides technical supervision to positions #77767, #80107, #81943 (Chart III)

OFFICE OF THE DEAN

SOCIAL SCIENCE RESEARCH INSTITUTE
OFFICE OF THE DIRECTOR
Org Code: MASSRI

Director, #862261.00
Specialist Type Faculty:
#88743, #88751 (0.75)1.75
Adm & Fiscal Support Sp, PBA, #800871.00
#80819T (0.25)0.25T

1/

FISCAL SERVICES
Org Code: MAASRI

Administrative Officer, PBB3.00
#77767, #80107, #81943
Admin & Fiscal Support Sp, PBA, #774651.00

ECONOMIC RESEARCH ORGANIZATION
Org Code: MARSRI

Instr Type Faculty, #84797 (0.50)0.50
Instr Type Faculty, #848711.00
Specialist Type Faculty:
#84643, #84870, #88744 (0.50)2.50
IT Specialist, PBB, #795471.00

CENTER FOR ORAL HISTORY
Org Code: MAOHRI

Ed Specialist, PBB, #808131.00
Research Assoc, PBA, #77024 (0.50)0.50

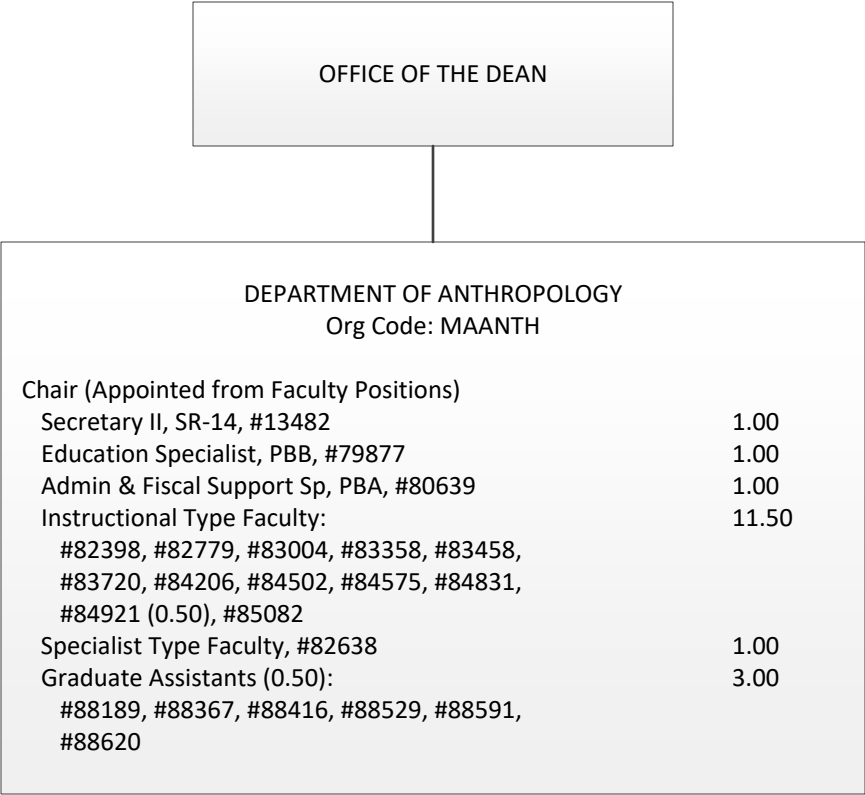
CENTER FOR YOUTH RESEARCH
Org Code: MAYRRI

Instr Type Faculty, #84797 (0.50)0.50
Ed Specialist, PBB, #805311.00

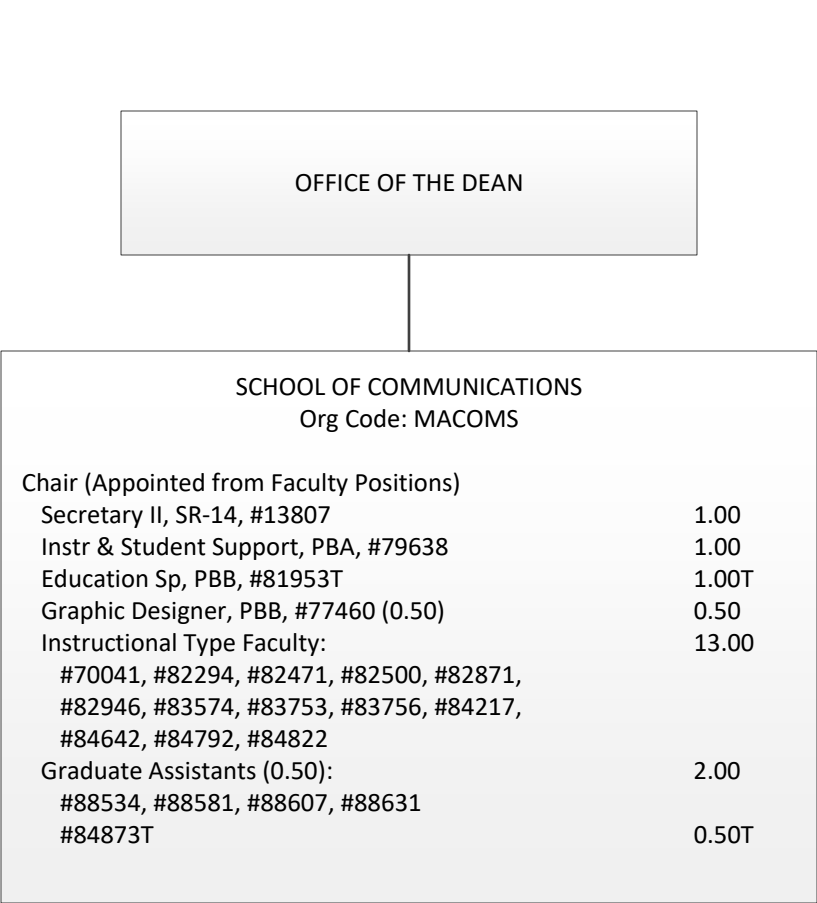
TELECOMMUNICATIONS AND SOCIAL INFORMATICS (TASI)
RESEARCH PROGRAM / PACIFIC HEALTH INFORMATICS AND
DATA CENTER (PHIDC)
Org Code: MAPSAT

Specialist Type Faculty, #83924, #862252.00

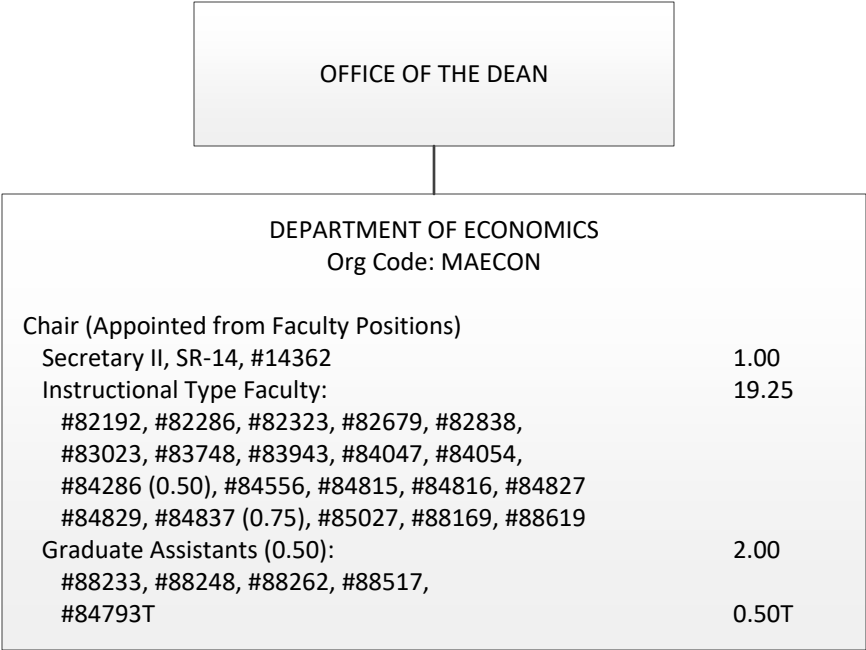
1/ #80819T abolished, to be established



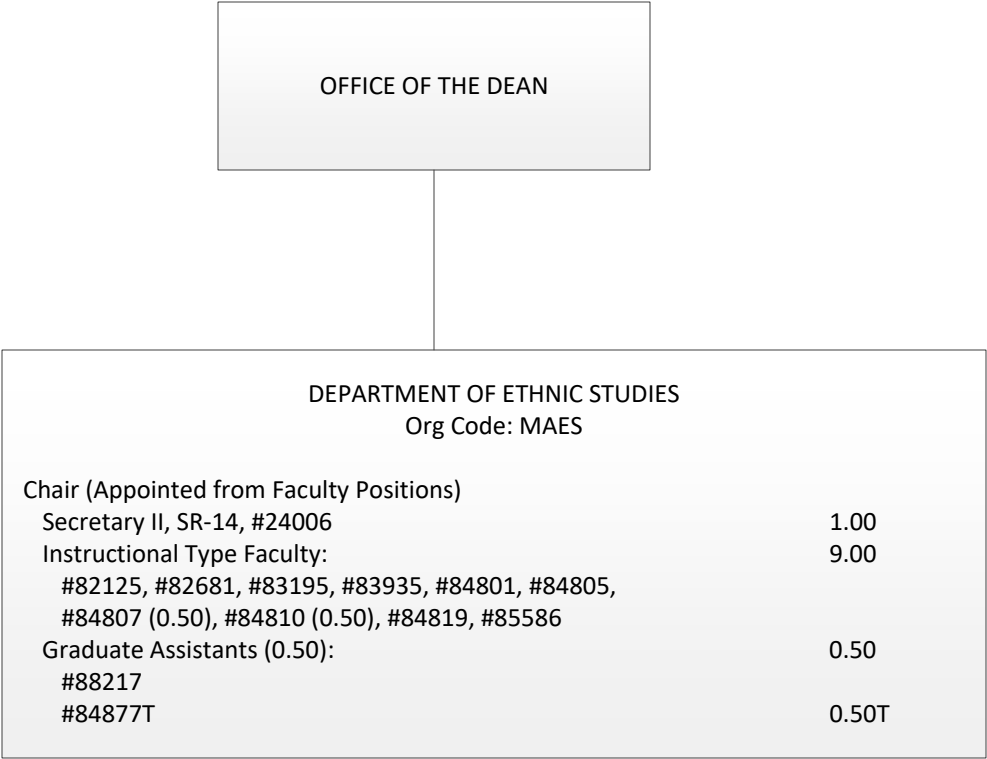
STATE OF HAWAII
UNIVERSITY OF HAWAII
UNIVERSITY OF HAWAII AT MANOA
OFFICE OF THE VICE CHANCELLOR FOR
ACADEMIC AFFAIRS
COLLEGES OF ARTS AND SCIENCES
COLLEGE OF SOCIAL SCIENCES
DEPARTMENT OF ANTHROPOLOGY
ORGANIZATIONAL CHART
CHART IV-A

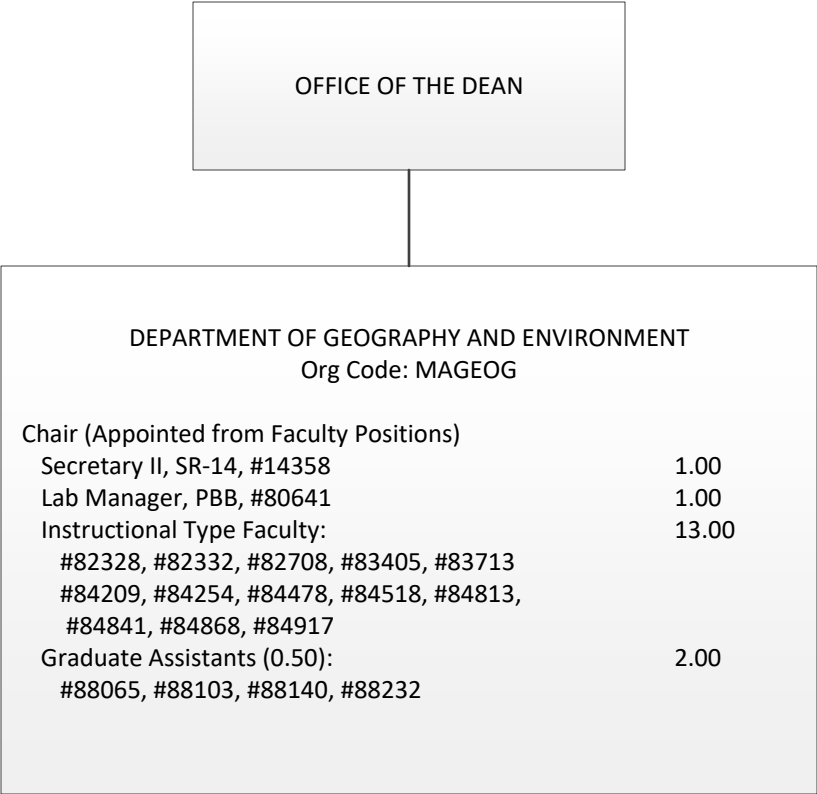


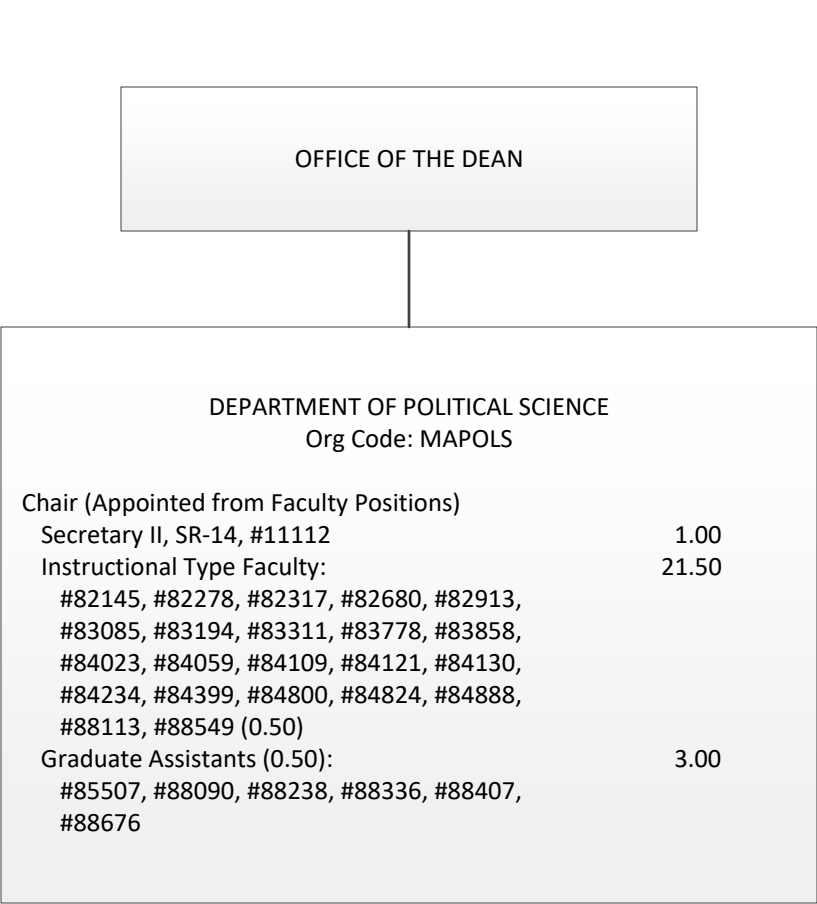
STATE OF HAWAII
UNIVERSITY OF HAWAII
UNIVERSITY OF HAWAII AT MANOA
OFFICE OF THE VICE CHANCELLOR FOR
ACADEMIC AFFAIRS
COLLEGES OF ARTS AND SCIENCES
COLLEGE OF SOCIAL SCIENCES
SCHOOL OF COMMUNICATIONS
ORGANIZATIONAL CHART
CHART IV-B



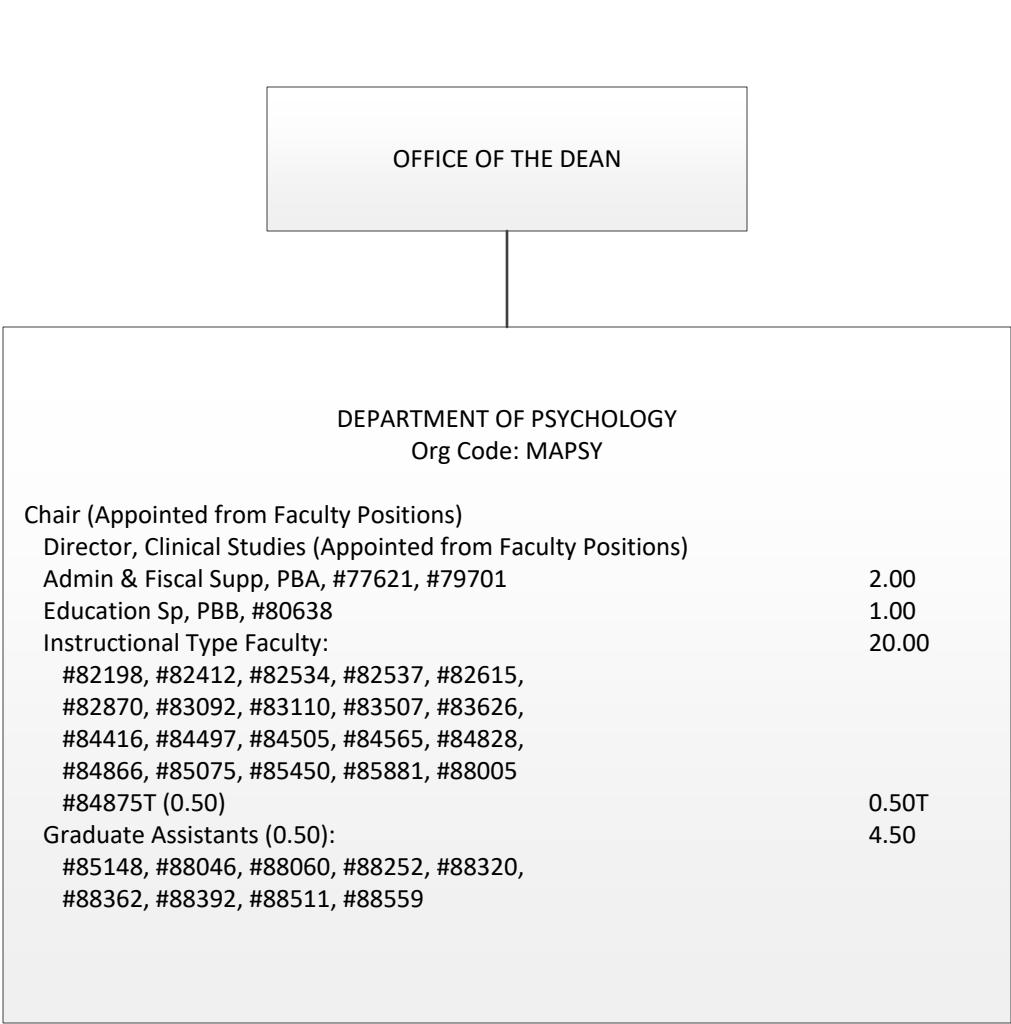
STATE OF HAWAII
UNIVERSITY OF HAWAII
UNIVERSITY OF HAWAII AT MANOA
OFFICE OF THE VICE CHANCELLOR FOR
ACADEMIC AFFAIRS
COLLEGES OF ARTS AND SCIENCES
COLLEGE OF SOCIAL SCIENCES
DEPARTMENT OF ETHNIC STUDIES
ORGANIZATIONAL CHART
CHART IV-D



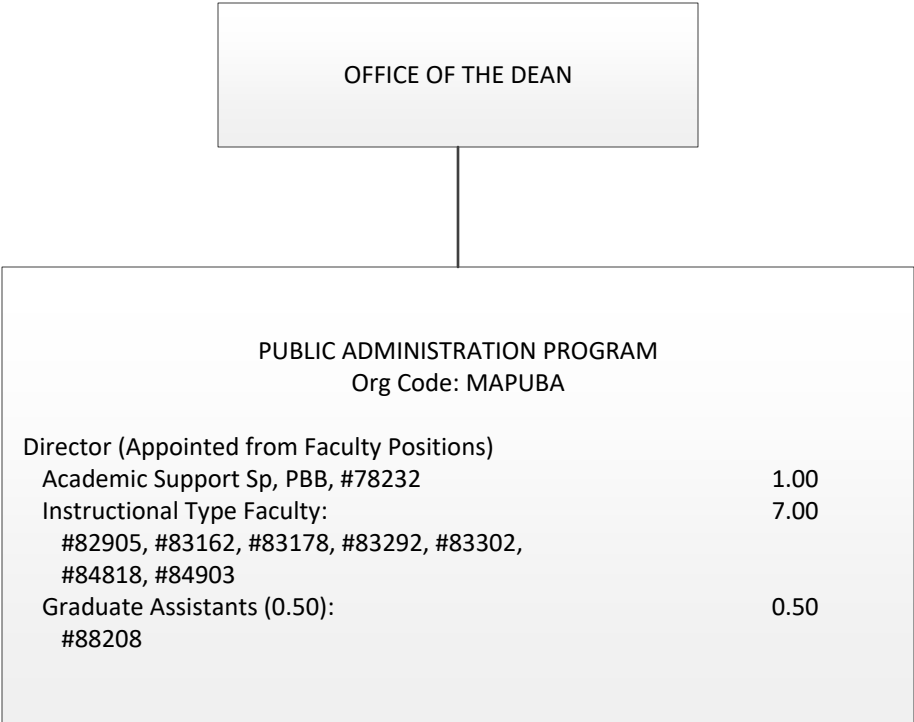




STATE OF HAWAII
UNIVERSITY OF HAWAII
UNIVERSITY OF HAWAII AT MANOA
OFFICE OF THE VICE CHANCELLOR FOR
ACADEMIC AFFAIRS
COLLEGES OF ARTS AND SCIENCES
COLLEGE OF SOCIAL SCIENCES
DEPARTMENT OF POLITICAL SCIENCE
ORGANIZATIONAL CHART
CHART IV-F



STATE OF HAWAII
UNIVERSITY OF HAWAII
UNIVERSITY OF HAWAII AT MANOA
OFFICE OF THE VICE CHANCELLOR FOR
ACADEMIC AFFAIRS
COLLEGES OF ARTS AND SCIENCES
COLLEGE OF SOCIAL SCIENCES
DEPARTMENT OF PSYCHOLOGY
ORGANIZATIONAL CHART
CHART IV-G



STATE OF HAWAII
UNIVERSITY OF HAWAII
UNIVERSITY OF HAWAII AT MANOA
OFFICE OF THE VICE CHANCELLOR FOR
ACADEMIC AFFAIRS
COLLEGES OF ARTS AND SCIENCES
COLLEGE OF SOCIAL SCIENCES
DEPARTMENT OF SOCIOLOGY
ORGANIZATIONAL CHART
CHART IV-I

