

STATE OF HAWAI'I
UNIVERSITY OF HAWAI'I
UNIVERSITY OF HAWAI'I AT MĀNOA
OFFICE OF THE VICE CHANCELLOR
FOR ACADEMIC AFFAIRS

MYRON B THOMPSON SCHOOL OF SOCIAL WORK
Organizational Chart
Chart I

DEPARTMENT TOTAL: PERM TEMP
General Funds: 49.50 --

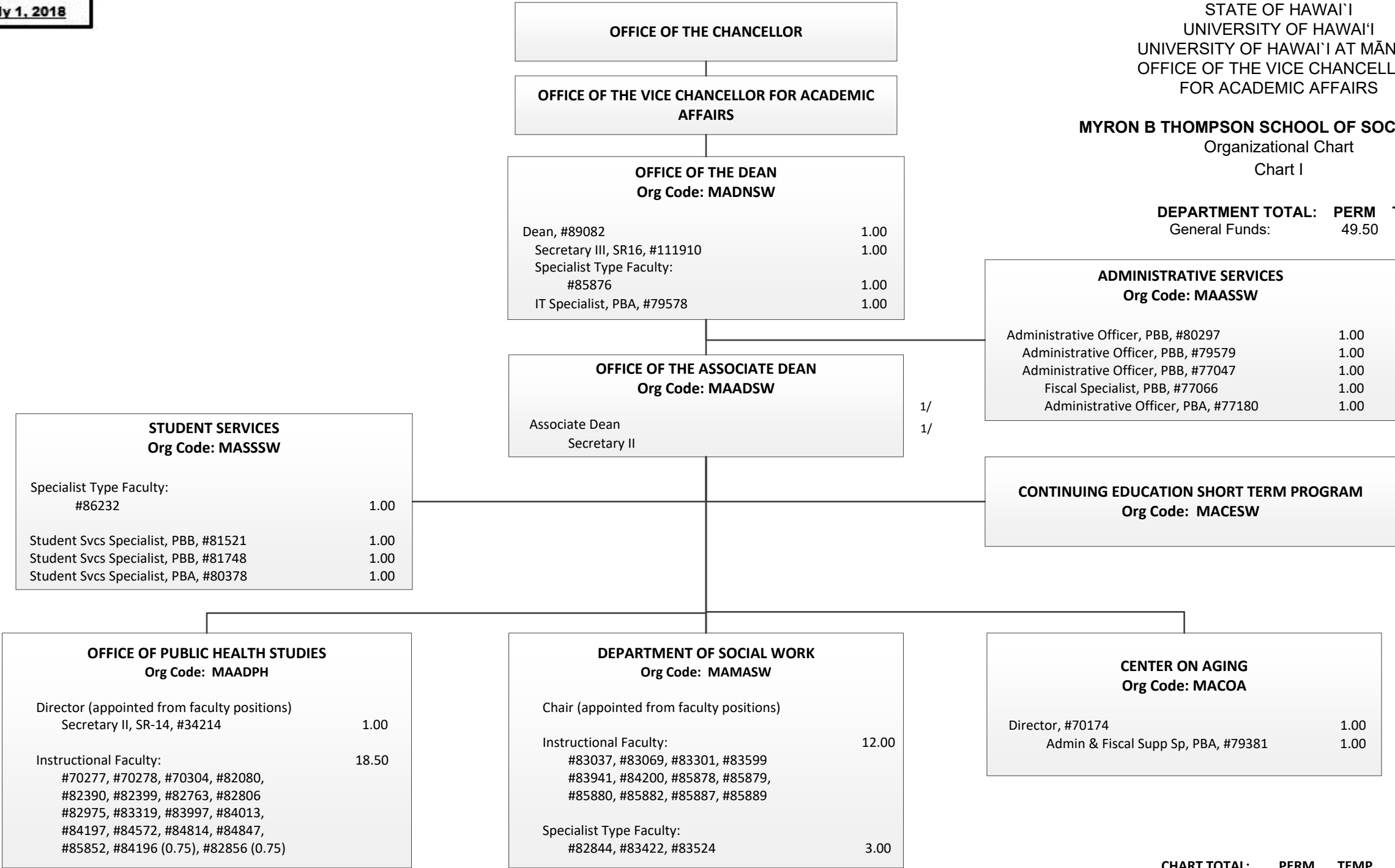


CHART TOTAL: PERM TEMP
General Funds: 49.50 --

1/ Associate Dean and Secretary II in Office of the Associate Dean to be established.