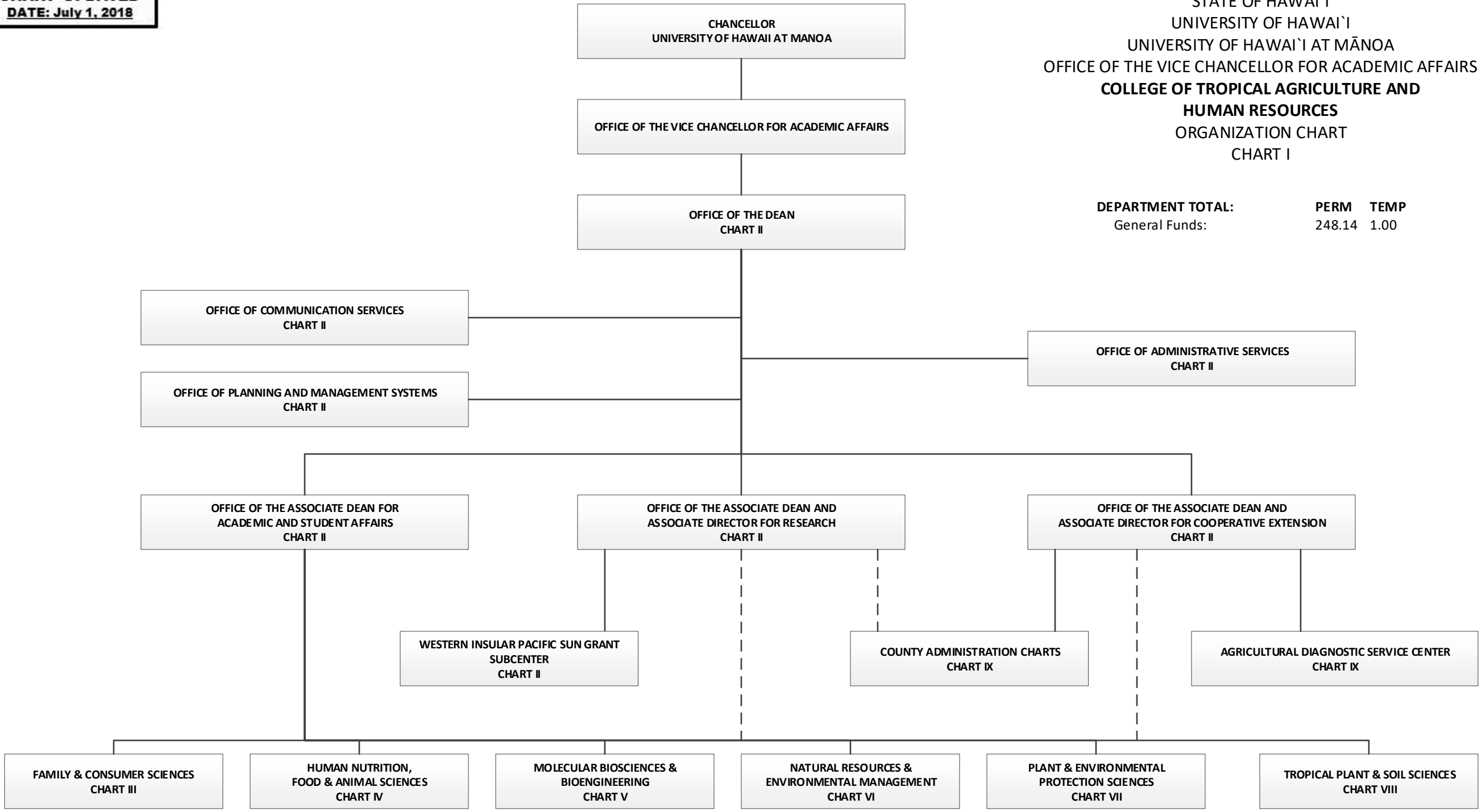


**CHART UPDATED**  
**DATE: July 1, 2018**

STATE OF HAWAI'I  
 UNIVERSITY OF HAWAI'I  
 UNIVERSITY OF HAWAI'I AT MĀNOA  
 OFFICE OF THE VICE CHANCELLOR FOR ACADEMIC AFFAIRS  
**COLLEGE OF TROPICAL AGRICULTURE AND  
 HUMAN RESOURCES**  
 ORGANIZATION CHART  
 CHART I

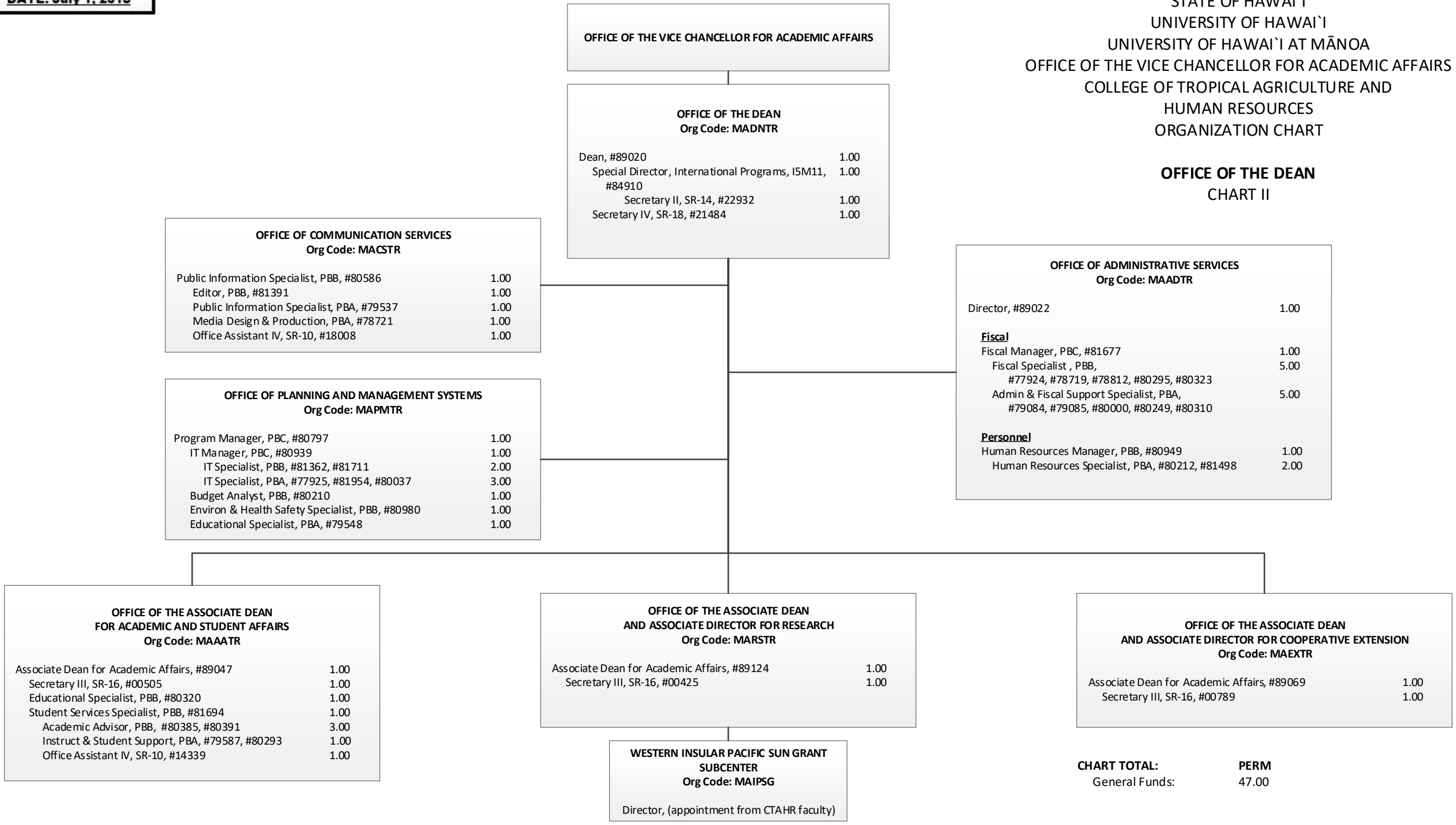
<b>DEPARTMENT TOTAL:</b>	<b>PERM</b>	<b>TEMP</b>
General Funds:	248.14	1.00



**CHART UPDATED**  
**DATE: July 1, 2018**

STATE OF HAWAI'I  
 UNIVERSITY OF HAWAI'I  
 UNIVERSITY OF HAWAI'I AT MĀNOA  
 OFFICE OF THE VICE CHANCELLOR FOR ACADEMIC AFFAIRS  
 COLLEGE OF TROPICAL AGRICULTURE AND  
 HUMAN RESOURCES  
 ORGANIZATION CHART

**OFFICE OF THE DEAN**  
**CHART II**



**CHART TOTAL:**                      **PERM**  
 General Funds:                      47.00

**CHART UPDATED**  
**DATE: July 1, 2018**

STATE OF HAWAI'I  
 UNIVERSITY OF HAWAI'I  
 UNIVERSITY OF HAWAI'I AT MĀNOA  
 OFFICE OF THE VICE CHANCELLOR FOR ACADEMIC AFFAIRS  
 COLLEGE OF TROPICAL AGRICULTURE AND  
 HUMAN RESOURCES  
 ORGANIZATION CHART

OFFICE OF THE ASSOCIATE DEAN FOR  
 ACADEMIC AND STUDENT AFFAIRS

**DEPARTMENT OF FAMILY AND CONSUMER SCIENCES**  
 Org Code: MAFCS

Chairperson (Appointment from among faculty positions)  
 Secretary II, SR-14, #22849 1.00  
 Office Assistant III, SR-08, #21208 1.00  
 Instr & Student Support Specialist, PBA, #80784 1.00  
 Administrative & Fiscal Support Specialist, PBA, #78061 1.00

Graduate Assistants 2.50  
 #88134, #88219, #88410, #88565, #88576

**Faculty Positions** 14.05

**Oahu**  
 Instructional Faculty:  
 #82094, #82336, #82866, #82869, #83525, #83553, #83690,  
 #83765, #83816, #84316, #84500, #84914, #86034, #86066, #86274  
 Specialist Type Faculty:  
 #85421  
 Agent Type Faculty:  
 #82074, #84685

**Maui**  
 Agent Type Faculty:  
 #84120, #84147

**Hawaii**  
 Agent Type Faculty:  
 #82313, #82505

**Kauai**  
 Agent Type Faculty:  
 #82175

**DEPARTMENT OF FAMILY AND CONSUMER SCIENCES**  
 CHART III

4-H OFFICE  
 Org Code: MA4H

Specialist Type Faculty: 1.00  
 #83968

**CENTER ON THE FAMILY**  
 Org Code: MACOF

Faculty Position 3.00  
 Specialist, #85550  
 Specialist Type Faculty:  
 #82181, #82238, #84145, #84325, #84477  
 Research Type Faculty:  
 #83399, #84585  
 Secretary II, SR-14, #46186 1.00  
 Administrative & Fiscal Support Spec, PBA, #81073 1.00

**CHART TOTAL:**                      **PERM**    **TEMP**  
 General Funds:                      26.55    --

**CHART UPDATED**  
**DATE: July 1, 2018**

STATE OF HAWAI'I  
 UNIVERSITY OF HAWAI'I  
 UNIVERSITY OF HAWAI'I AT MĀNOA  
 OFFICE OF THE VICE CHANCELLOR FOR ACADEMIC AFFAIRS  
 COLLEGE OF TROPICAL AGRICULTURE AND  
 HUMAN RESOURCES  
 ORGANIZATION CHART

**DEPARTMENT OF HUMAN NUTRITION, FOOD AND  
 ANIMAL SCIENCES**  
 CHART IV

OFFICE OF THE ASSOCIATE DEAN FOR  
 ACADEMIC AND STUDENT AFFAIRS

DEPARTMENT OF HUMAN NUTRITION, FOOD AND ANIMAL SCIENCES	
Org Code: MAHFAS	
Chairperson (Appointed from among faculty position)	
Secretary II, SR-14, #00400	1.00
Office Assistant III, SR-08, #900569	1.00
Administrative & Fiscal Support Specialist, PBA, #80386	1.00
Research Associate, PBB, #80410	1.00
Research Associate, PBA, #77092	1.00
Graduate Assistants	2.50
#88088, #88165, #88303, #88594, #88643, #85388T	0.50T
<b>Faculty Positions</b>	17.60
<b>Oahu</b>	
Specialist Type Faculty:	
#82107, #83017, #83510, #83830, #84323, #84640	
Research Type Faculty:	
#82945, #83633, #84227, #84496, #85576	
Instructional Faculty:	
#82248, #82856, #82865, #83012, #83267, #83811, #84306, #84449, #84454, #84512, #84919, #84920, #85556, #87552	
Agent Type Faculty:	
#84439	
<b>Maui</b>	
Agent Type Faculty:	
#82639, #83728	
<b>Hawaii</b>	
Specialist Type Faculty:	
#82090	
Agent Type Faculty:	
#83152, #84158, #84276, #84297	
<b>Kauai</b>	
Agent Type Faculty:	
#82363	

**CHART TOTAL:**                      **PERM**    **TEMP**  
 General Funds:                      25.10    0.50T

**CHART UPDATED**  
**DATE: July 1, 2018**

STATE OF HAWAI'I  
 UNIVERSITY OF HAWAI'I  
 UNIVERSITY OF HAWAI'I AT MĀNOA  
 OFFICE OF THE VICE CHANCELLOR FOR ACADEMIC AFFAIRS  
 COLLEGE OF TROPICAL AGRICULTURE AND  
 HUMAN RESOURCES  
 ORGANIZATION CHART

**DEPARTMENT OF MOLECULAR BIOSCIENCES AND  
 BIOENGINEERING**  
 CHART V

OFFICE OF THE ASSOCIATE DEAN FOR  
 ACADEMIC AND STUDENT AFFAIRS

DEPARTMENT OF MOLECULAR BIOSCIENCES AND BIOENGINEERING	
Org Code: MAMBBE	
Chairperson (Appointed from among faculty position)	
Secretary II, SR-14, #900581	1.00
Administrative & Fiscal Support Specialist, PBA, #78046	1.00
Research Associate, PBB, #80409, #81325	2.00
Agr Lab Technician I, BC-12, #05730	1.00
Graduate Assistants: #88486, #88494, #88509, #88630	2.00
<b>Faculty Positions</b>	5.72
<b>Oahu</b>	
Specialist Type Faculty: #85555	
Research Type Faculty: #82224, #82848, #84193, #87523	
Instructional Faculty: #82027, #82919, #83034, #83343, #83767, #83882, #84114, #84600, #84617	

**CHART TOTAL:**                      **PERM**    **TEMP**  
 General Funds:                      12.72    --

**CHART UPDATED**  
**DATE: July 1, 2018**

STATE OF HAWAI'I  
 UNIVERSITY OF HAWAI'I  
 UNIVERSITY OF HAWAI'I AT MĀNOA  
 OFFICE OF THE VICE CHANCELLOR FOR ACADEMIC AFFAIRS  
 COLLEGE OF TROPICAL AGRICULTURE AND  
 HUMAN RESOURCES  
 ORGANIZATION CHART

**DEPARTMENT OF NATURAL RESOURCES AND  
 ENVIRONMENTAL MANAGEMENT**  
 CHART VI

OFFICE OF THE ASSOCIATE DEAN FOR  
 ACADEMIC AND STUDENT AFFAIRS

DEPARTMENT OF NATURAL RESOURCES AND ENVIRONMENTAL MANAGEMENT	
Org Code: MANREM	
Chairperson (Appointed from among faculty position)	
Secretary II, SR-14, #05838	1.00
Office Assistant III, SR-08, #42681	1.00
Administrative & Fiscal Support Specialist, PBA, #78324	1.00
Graduate Assistants:	1.50
#88028, #88181, #88431, #85545T	0.50T
<b>Faculty Positions</b>	12.60
<b>Oahu</b>	
Specialist Type Faculty:	
#82058, #84488	
Research Type Faculty:	
#84915	
Instructional Faculty:	
#82432, #82516, #83117, #83142, #83629, #83666, #83770, #83785	
#84627, #84668, #85373, #86242	
Agent Type Faculty:	
#83824	
<b>Maui</b>	
Specialist Type Faculty:	
#83459	
<b>Hawaii</b>	
Specialist Type Faculty:	
#84171	
Agent Type Faculty:	
#84045, #85336	

**CHART TOTAL:**                      **PERM**    **TEMP**  
 General Funds:                      17.10    0.50T

**CHART UPDATED**  
**DATE: July 1, 2018**

OFFICE OF THE ASSOCIATE DEAN FOR  
 ACADEMIC AND STUDENT AFFAIRS

STATE OF HAWAI'I  
 UNIVERSITY OF HAWAI'I  
 UNIVERSITY OF HAWAI'I AT MĀNOA  
 OFFICE OF THE VICE CHANCELLOR FOR ACADEMIC AFFAIRS  
 COLLEGE OF TROPICAL AGRICULTURE AND  
 HUMAN RESOURCES  
 ORGANIZATION CHART

DEPARTMENT OF PLANT AND ENVIRONMENTAL PROTECTION SCIENCES  
 Org Code: MAPEPS

Chairperson (Appointed from among faculty position)	
Secretary II, SR-14, #07477	1.00
Office Assistant III, SR-08, #00794, #15509	2.00
Administrative & Fiscal Support Specialist, PBA, #77864	1.00
Educational Specialist, PBB, #80250	1.00
Research Associate, PBB, #80388, #81178, #81311	3.00
Research Associate, PBA, #81313	1.00
Agr Research Technician V, SR-16, #00442	1.00
Agr Research Technician IV, SR-14, #24270	1.00
Agr Research Technician III, SR-11, #24269	1.00
Graduate Assistants: #84932, #88241	1.00
<b>Faculty Positions</b>	9.56
<b>Oahu</b>	
Specialist Type Faculty: #83320, #83513, #84006, #84321, #84911	
Research Type Faculty: #82047, #82139, #83067, #83184, #83260, #83742 #83884, #84041, #85547	
Instructional Faculty: #82976, #84138, #85510	
Agent Type Faculty: #84489	
<b>Maui</b>	
Agent Type Faculty: #85530	
<b>Hawaii</b>	
Agent Type Faculty: #82196, #83462, #85538	
<b>Kauai</b>	
Instructional Type Faculty: #85505	
Agent Type Faculty: #85410	

DEPARTMENT OF PLANT AND ENVIRONMENTAL  
 PROTECTION SCIENCES  
 CHART VII

<b>CHART TOTAL:</b>	<b>PERM</b>	<b>TEMP</b>
General Funds:	22.56	--

**CHART UPDATED**  
**DATE: July 1, 2018**

OFFICE OF THE ASSOCIATE DEAN FOR  
 ACADEMIC AND STUDENT AFFAIRS

STATE OF HAWAI'I  
 UNIVERSITY OF HAWAI'I  
 UNIVERSITY OF HAWAI'I AT MĀNOA  
 OFFICE OF THE VICE CHANCELLOR FOR ACADEMIC AFFAIRS  
 COLLEGE OF TROPICAL AGRICULTURE AND  
 HUMAN RESOURCES  
 ORGANIZATION CHART

DEPARTMENT OF TROPICAL PLANT AND SOIL SCIENCES	
Org Code: MATPSS	
Chairperson (Appointed from among faculty position)	
Secretary II, SR-14, #00793	1.00
Office Assistant IV, SR-10, #00399	1.00
Administrative & Fiscal Support Specialist, PBA, #77795	1.00
Research Associate, PBB, #80270	1.00
Agr Research Technician V, SR-16, #11019	1.00
Agr Research Technician IV, SR-14, #00397, #05392, #15512	3.00
Educational Specialist, PBA, #99525F	1.00
Graduate Assistants: #88171, #88423	1.00
<b>Faculty Positions</b>	23.11
<b>Oahu</b>	
Specialist Type Faculty: #82598, #82985, #83159, #83304, #83388, #83682, #84501, #84916	
Research Type Faculty: #82023, #82464, #82699, #82747, #83515, #83740, #83938, #84420, #84481, #85877, #86275	
Instructional Type Faculty: #83286, #85151	
Agent Type Faculty: #82881, #84070, #85435, #85460, #85528	
<b>Maui</b>	
Agent Type Faculty: #83848, #84075, #85392, #85404, #85423, #85459, #85477, #87584	
<b>Hawaii</b>	
Research Type Faculty: #84067, #84354	
Agent Type Faculty: #82485, #82758, #82951, #84648, #85440	
<b>Kauai</b>	
Agent Type Faculty: #85371, #85387	

**DEPARTMENT OF TROPICAL PLANT AND SOIL SCIENCES**  
**CHART VIII**

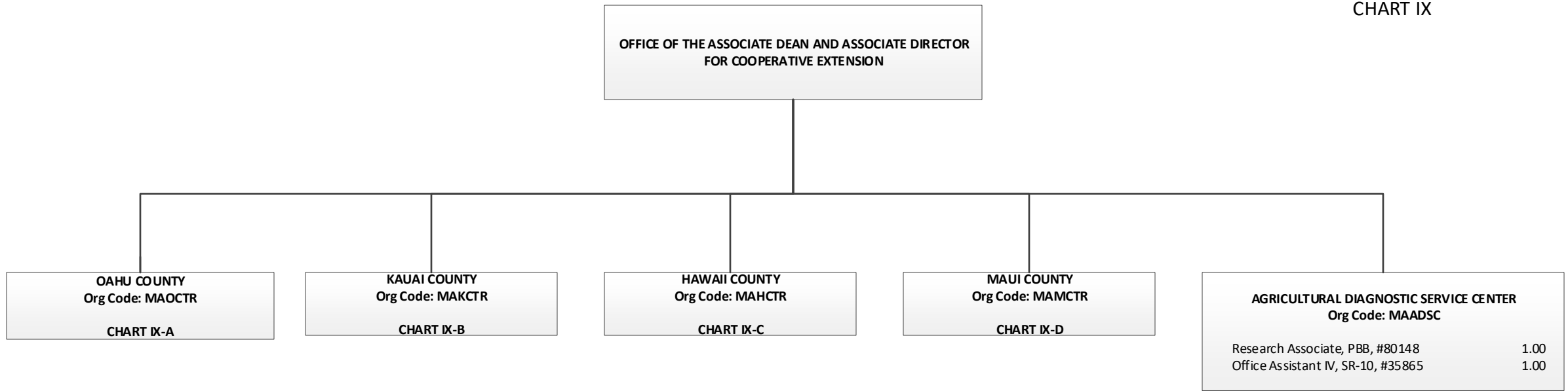
<b>CHART TOTAL:</b>	<b>PERM</b>	<b>TEMP</b>
General Funds:	33.11	--



**CHART UPDATED**  
**DATE: July 1, 2018**

STATE OF HAWAI'I  
 UNIVERSITY OF HAWAI'I  
 UNIVERSITY OF HAWAI'I AT MĀNOA  
 OFFICE OF THE VICE CHANCELLOR FOR ACADEMIC AFFAIRS  
 COLLEGE OF TROPICAL AGRICULTURE AND  
 HUMAN RESOURCES  
 ORGANIZATION CHART

**COUNTY ADMINISTRATION**  
**CHART IX**



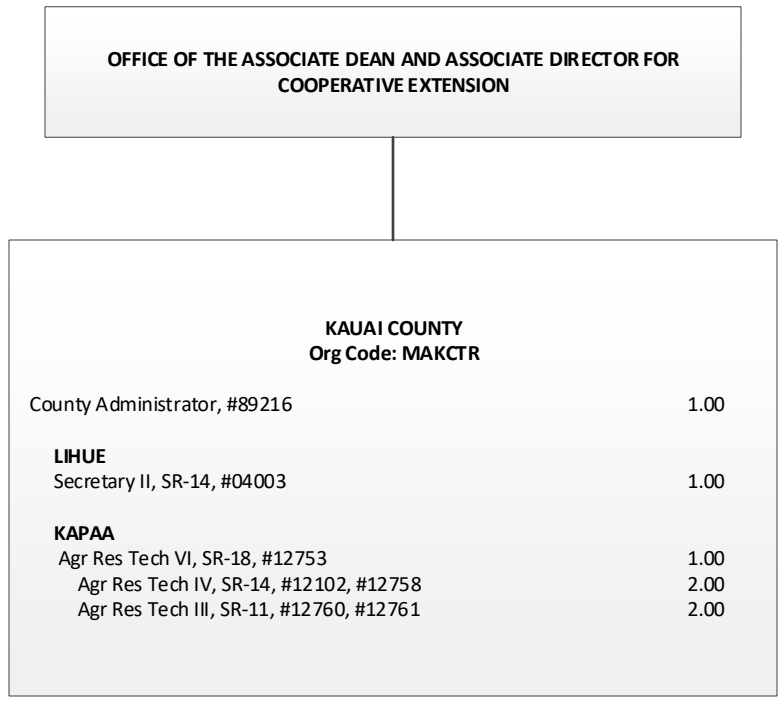
<b>CHART TOTAL:</b>	<b>PERM</b>	<b>TEMP</b>
General Funds:	2.00	--



**CHART UPDATED**  
**DATE: July 1, 2018**

STATE OF HAWAI'I  
 UNIVERSITY OF HAWAI'I  
 UNIVERSITY OF HAWAI'I AT MĀNOA  
 OFFICE OF THE VICE CHANCELLOR FOR ACADEMIC AFFAIRS  
 COLLEGE OF TROPICAL AGRICULTURE AND  
 HUMAN RESOURCES  
 ORGANIZATION CHART

**KAUAI COUNTY**  
 CHART IX-B



<b>CHART TOTAL:</b>	<b>PERM</b>	<b>TEMP</b>
General Funds:	7.00	--

**CHART UPDATED**  
**DATE: July 1, 2018**

**OFFICE OF THE ASSOCIATE DEAN AND ASSOCIATE DIRECTOR FOR COOPERATIVE  
EXTENSION**

<b>HAWAII COUNTY</b>	
Org Code: MAHCTR	
County Administrator, #89213	1.00
<b>KOMO HANA</b>	
Secretary II, SR-14, #13871	1.00
Office Assistant III, SR-08, #00791	1.00
<b>KONA</b>	
Office Assistant IV, SR-10, #900583	1.00
<b>KAMUELA</b>	
Office Assistant IV, SR-10, #00799	1.00

<b>HAWAII COUNTY TECHNICAL SUPPORT</b>	
Org Code: MAHTTR	
Educational Specialist, PBB, #80311	1.00
<b>EAST HAWAII</b>	
Agr Res Tech VI, SR-18, #12099	1.00
<b>WAI AKEA</b>	
Agr Res Tech V, SR-16, #14166	1.00
Agr Res Tech IV, SR-14, #12096, #12098, #14168, #15497	4.00
Agr Res Tech III, SR-11, #17602	1.00
Building Maintenance Worker I, BC-09, #12095	1.00
<b>VOLCANO</b>	
Agr Res Tech V, SR-16, #13206	1.00
Agr Res Tech IV, SR-14, #12097	1.00
<b>MALAMA-KI</b>	
<b>WEST HAWAII</b>	
Agr Res Tech VI, SR-18, #13530	1.00
<b>MEALANI</b>	
Agr Res Tech V, SR-16, #12094	1.00
Agr Res Tech IV, SR-14, #12100	1.00
Agr Res Tech III, SR-11, #13205, #44867, #44868	3.00
<b>HAMAKUA</b>	
<b>KONA</b>	
Agr Res Tech V, SR-16, #00409	1.00
Agr Res Tech IV, SR-14, #22912	1.00

STATE OF HAWAI'I  
UNIVERSITY OF HAWAI'I  
UNIVERSITY OF HAWAI'I AT MĀNOA  
OFFICE OF THE VICE CHANCELLOR FOR ACADEMIC AFFAIRS  
COLLEGE OF TROPICAL AGRICULTURE AND  
HUMAN RESOURCES  
ORGANIZATION CHART

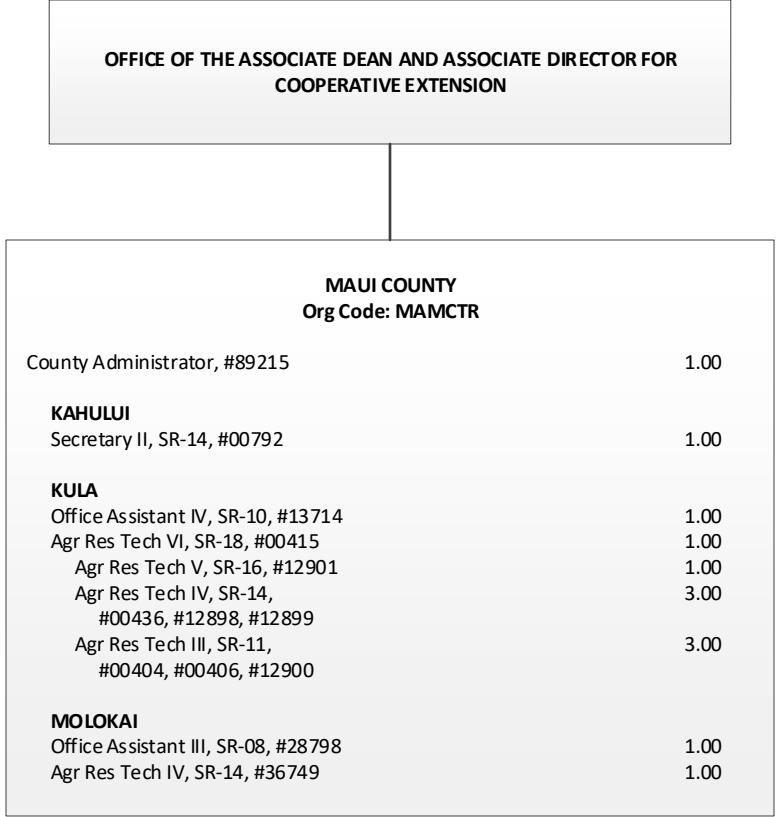
**HAWAII COUNTY**  
**CHART IX-C**

<b>CHART TOTAL:</b>	<b>PERM</b>	<b>TEMP</b>
General Funds:	24.00	--

**CHART UPDATED**  
**DATE: July 1, 2018**

STATE OF HAWAI'I  
 UNIVERSITY OF HAWAI'I  
 UNIVERSITY OF HAWAI'I AT MĀNOA  
 OFFICE OF THE VICE CHANCELLOR FOR ACADEMIC AFFAIRS  
 COLLEGE OF TROPICAL AGRICULTURE AND  
 HUMAN RESOURCES  
 ORGANIZATION CHART

**MAUI COUNTY**  
 CHART IX-D



<b>CHART TOTAL:</b>	<b>PERM</b>	<b>TEMP</b>
General Funds:	13.00	--