

STATE OF HAWAII  
UNIVERSITY OF HAWAII  
UNIVERSITY OF HAWAII AT MANOA  
OFFICE OF THE VICE CHANCELLOR FOR ACADEMIC AFFAIRS  
UNIVERSITY OF HAWAII PRESS  
ORGANIZATIONAL CHART  
CHART I

DEPARTMENT TOTAL:	PERM	TEMP
General Funds:	9.00	--
Revolving Funds (W):	6.00	--

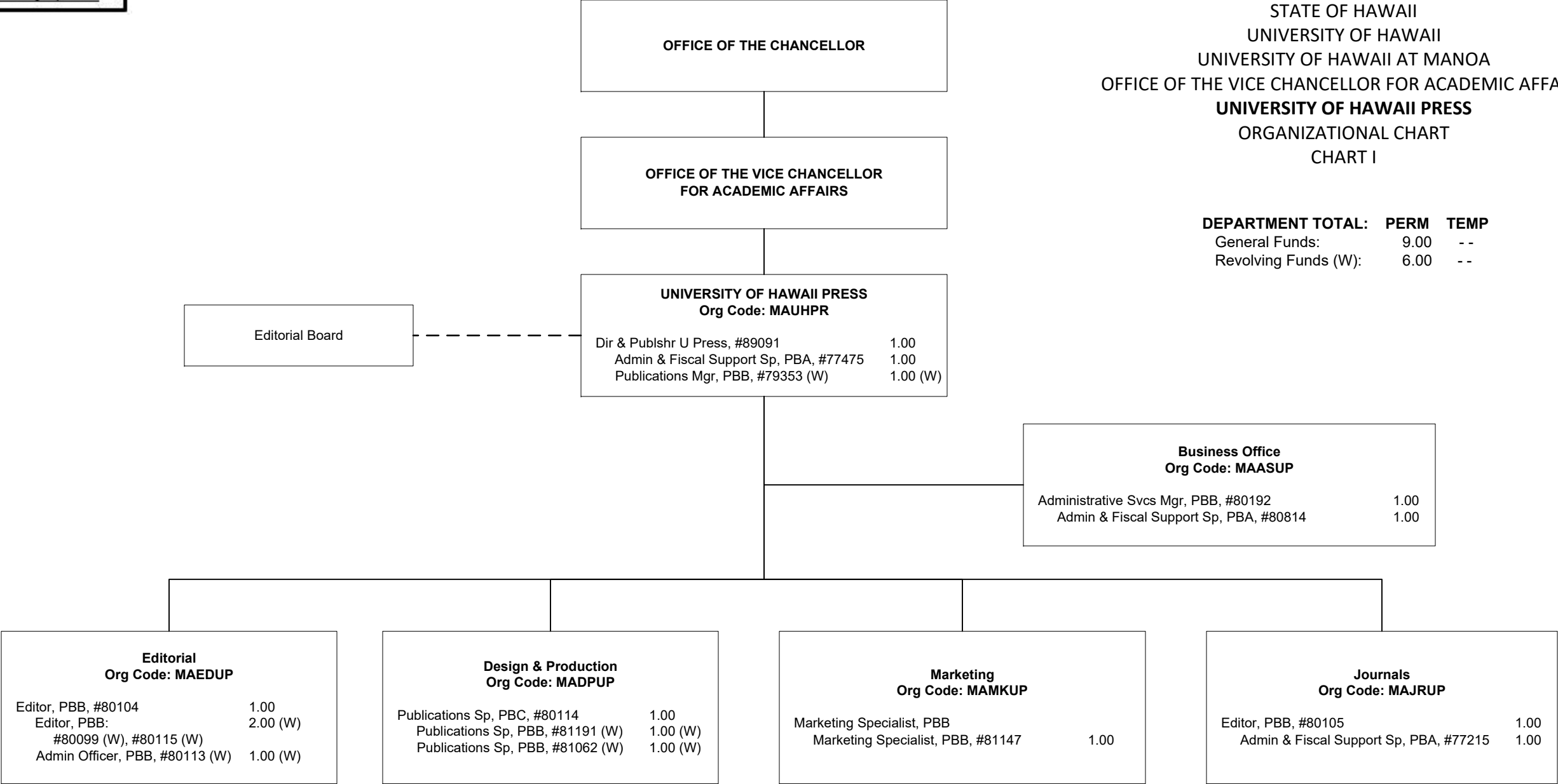


CHART TOTAL:	PERM	TEMP
General Funds:	9.00	--
Revolving Funds (W):	6.00	--