

STATE OF HAWAIʻI

UNIVERSITY OF HAWAIʻI

UNIVERSITY OF HAWAIʻI AT MĀNOA

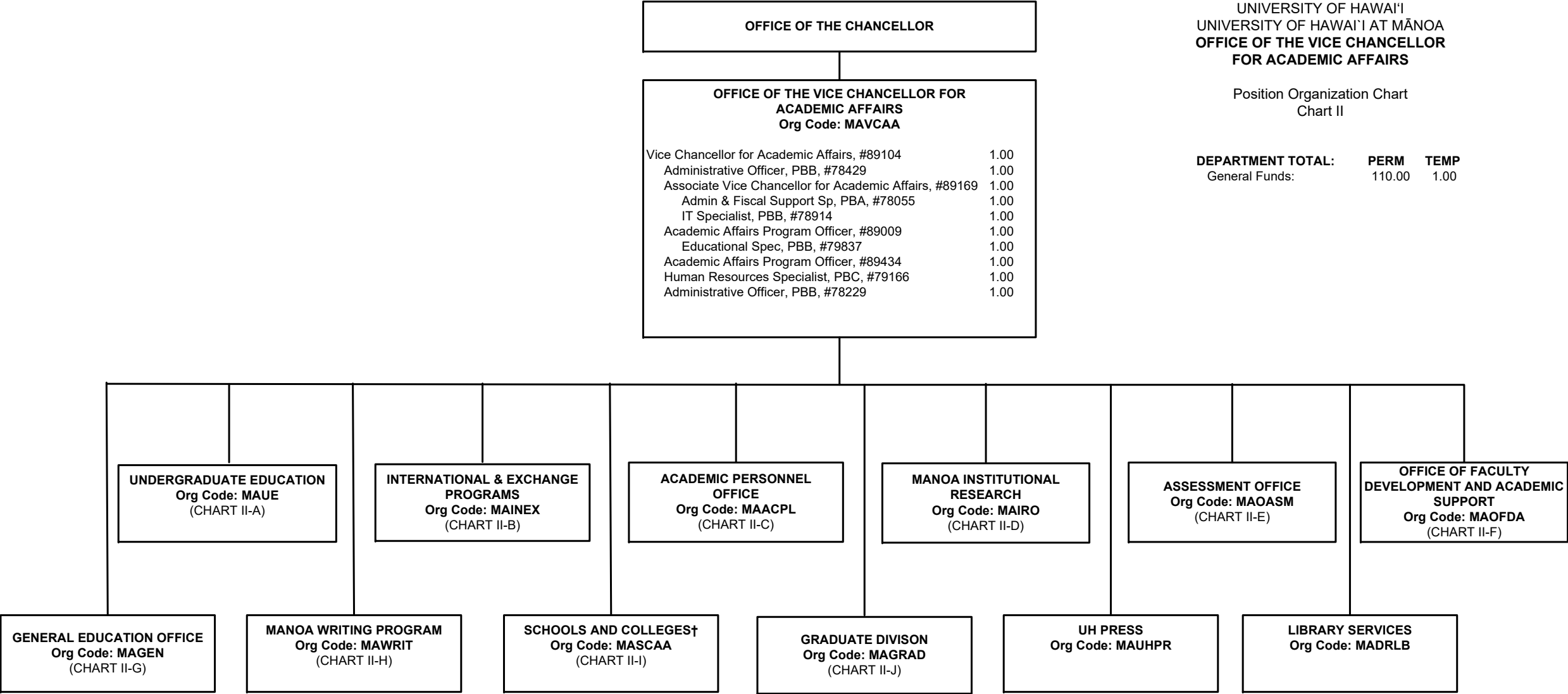
OFFICE OF THE VICE CHANCELLOR

FOR ACADEMIC AFFAIRS

Position Organization Chart

Chart II

DEPARTMENT TOTAL:	PERM	TEMP
General Funds:	110.00	1.00

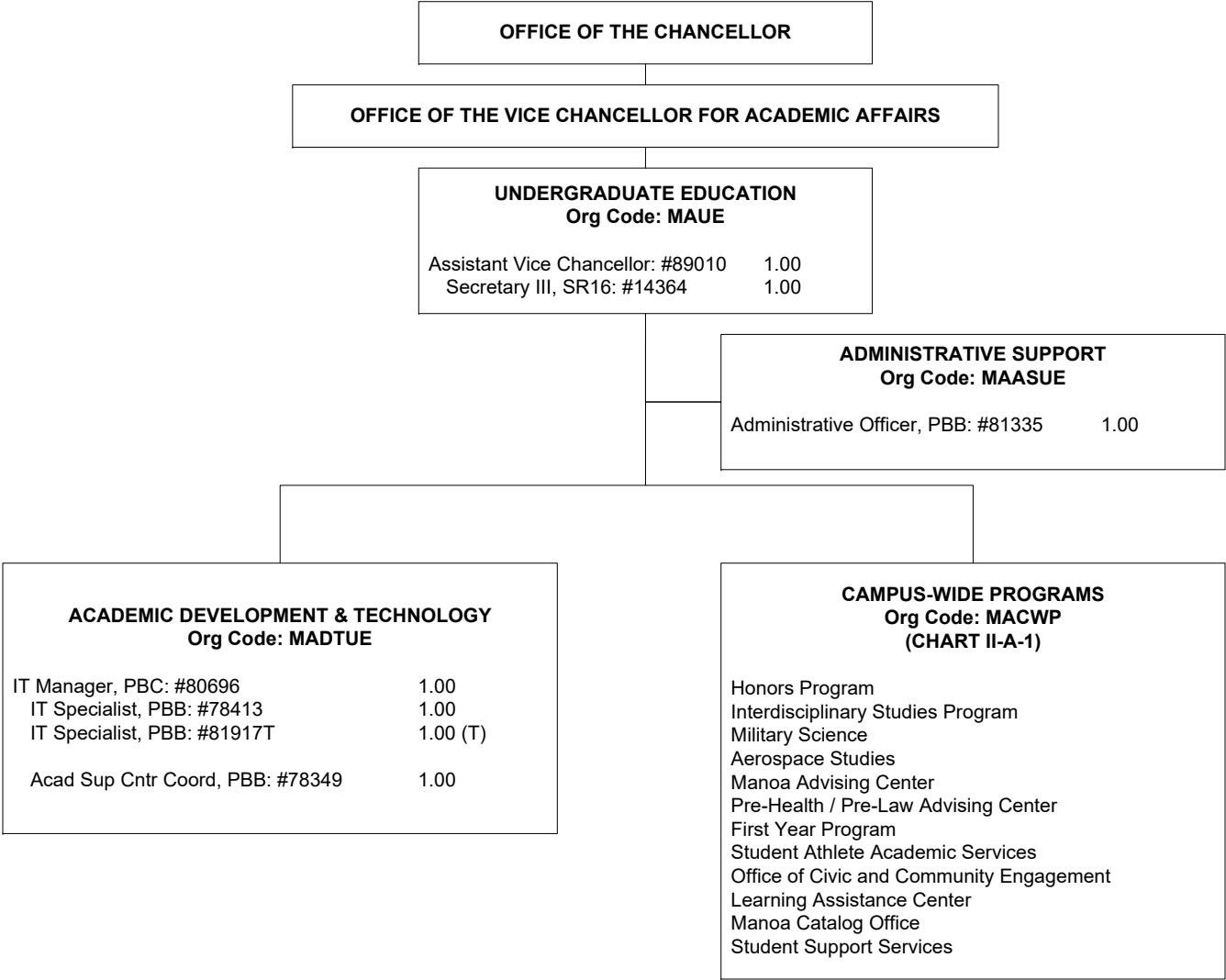


† Except John A. Burns School of Medicine, William S. Richardson School of Law, and the School of Ocean and Earth Science and Technology

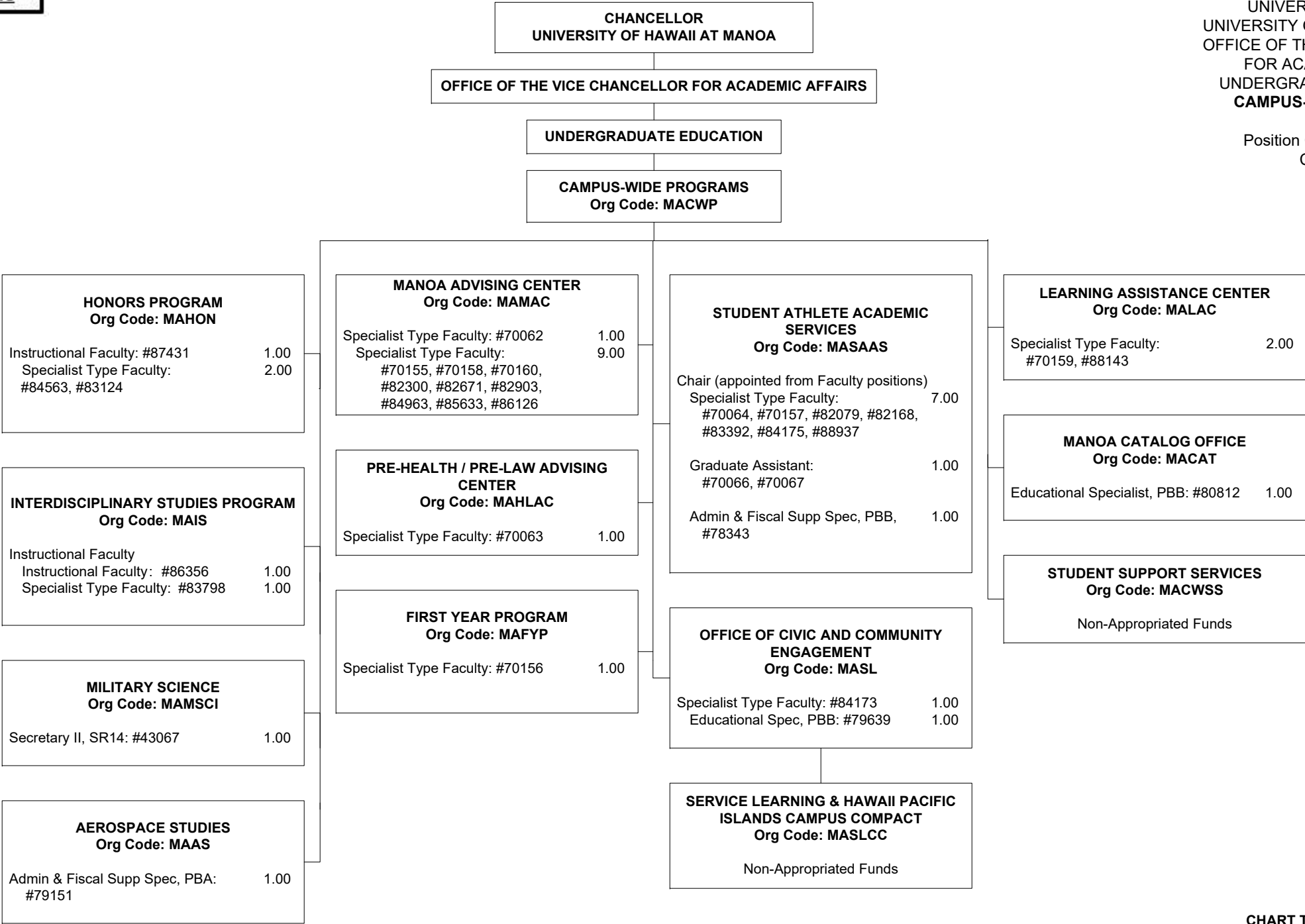
CHART TOTAL:	PERM	TEMP
General Funds:	10.00	--

STATE OF HAWAI'I
UNIVERSITY OF HAWAI'I
UNIVERSITY OF HAWAI'I AT MĀNOA
OFFICE OF THE VICE CHANCELLOR
FOR ACADEMIC AFFAIRS
UNDERGRADUATE EDUCATION

Position Organization Chart
Chart II-A



Position Organization Chart
Chart II-A-1



STATE OF HAWAI'I

UNIVERSITY OF HAWAI'I

UNIVERSITY OF HAWAI'I AT MĀNOA

OFFICE OF THE VICE CHANCELLOR

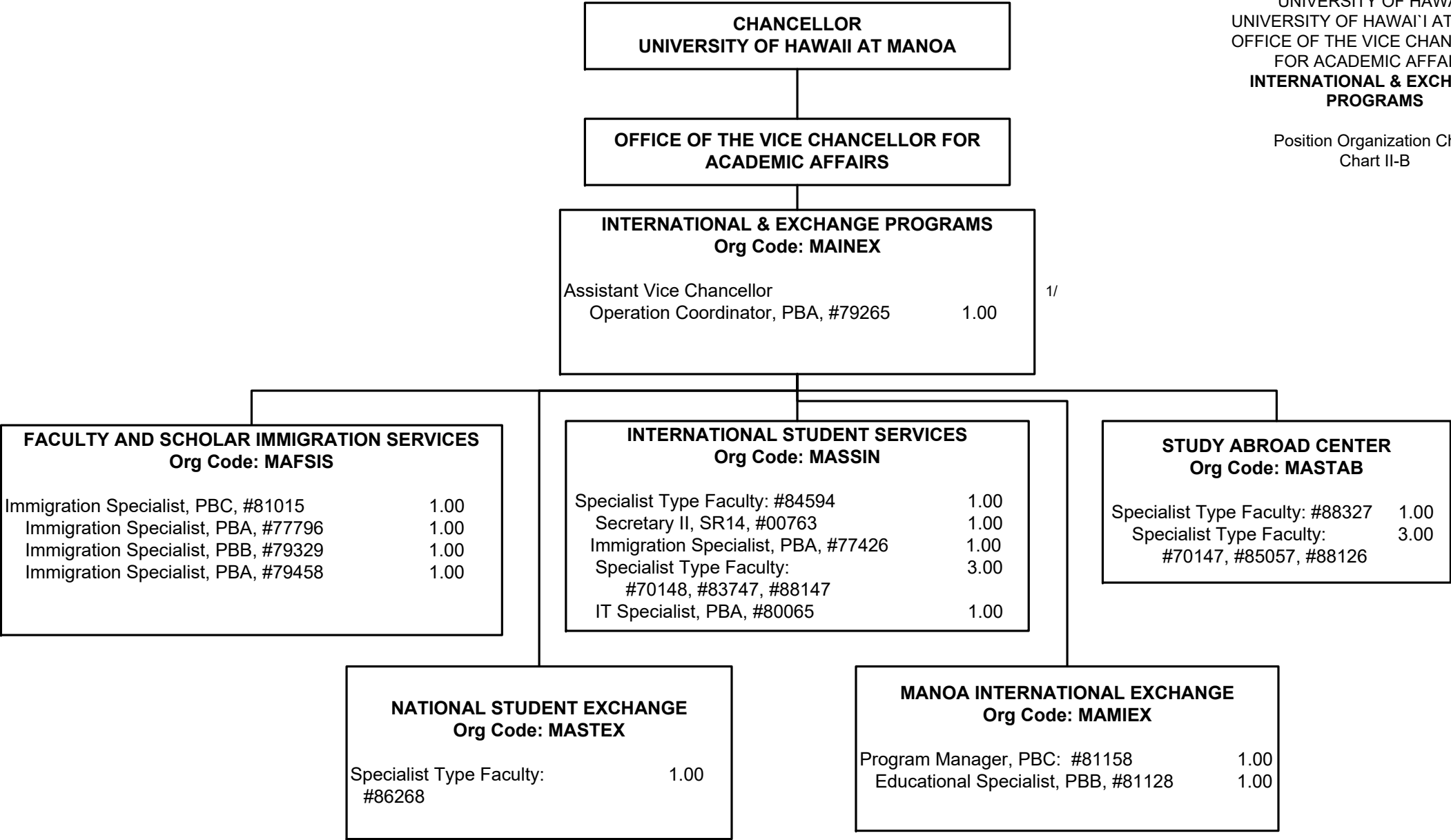
FOR ACADEMIC AFFAIRS

INTERNATIONAL & EXCHANGE

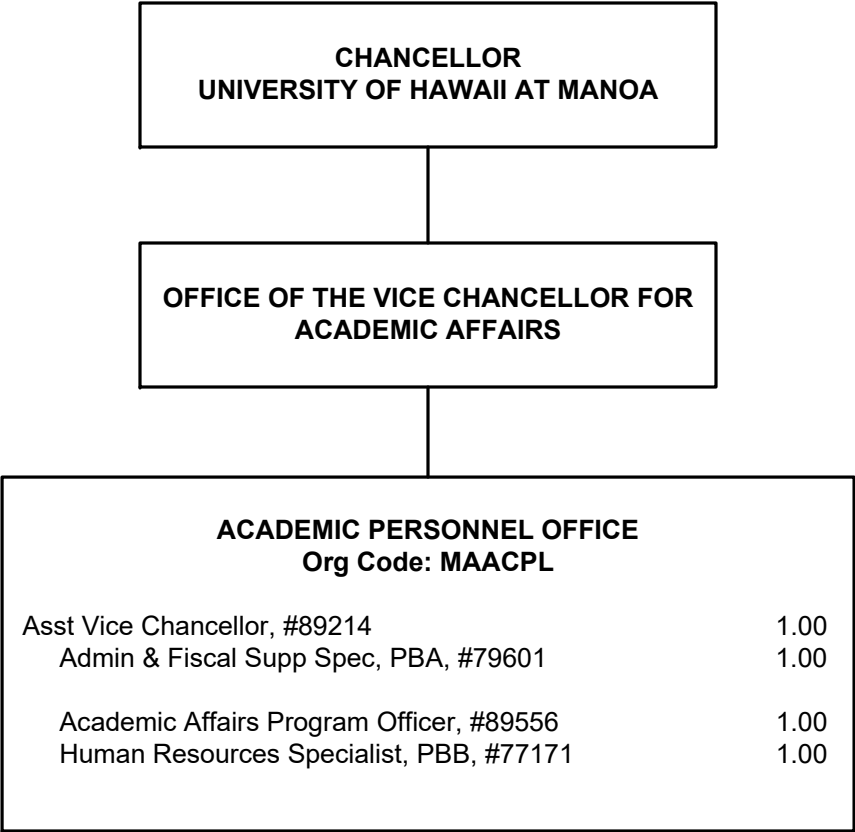
PROGRAMS

Position Organization Chart

Chart II-B

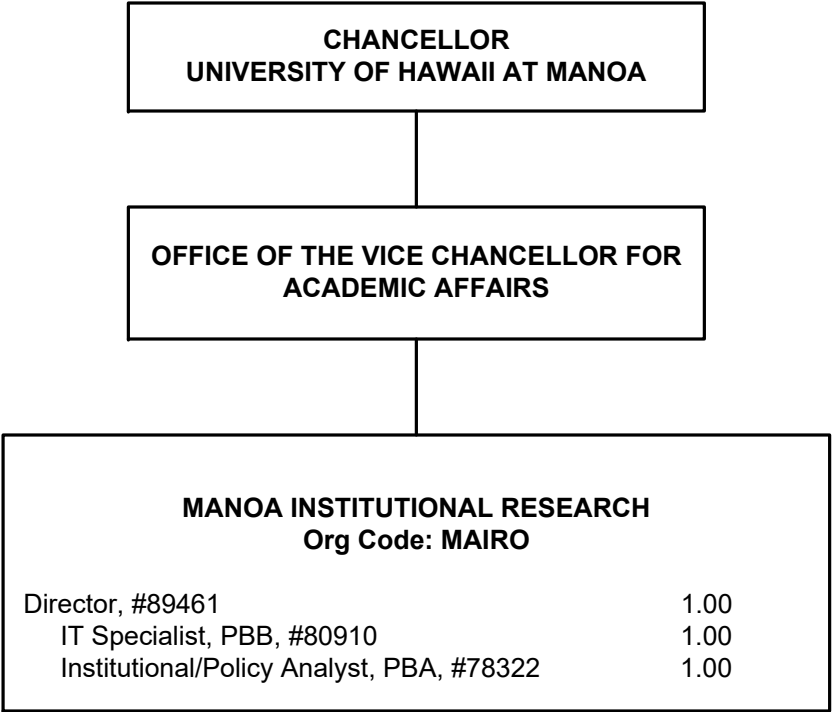


1/ Asst Vice Chancellor of International & Exchange Programs appointed from a Dean position.



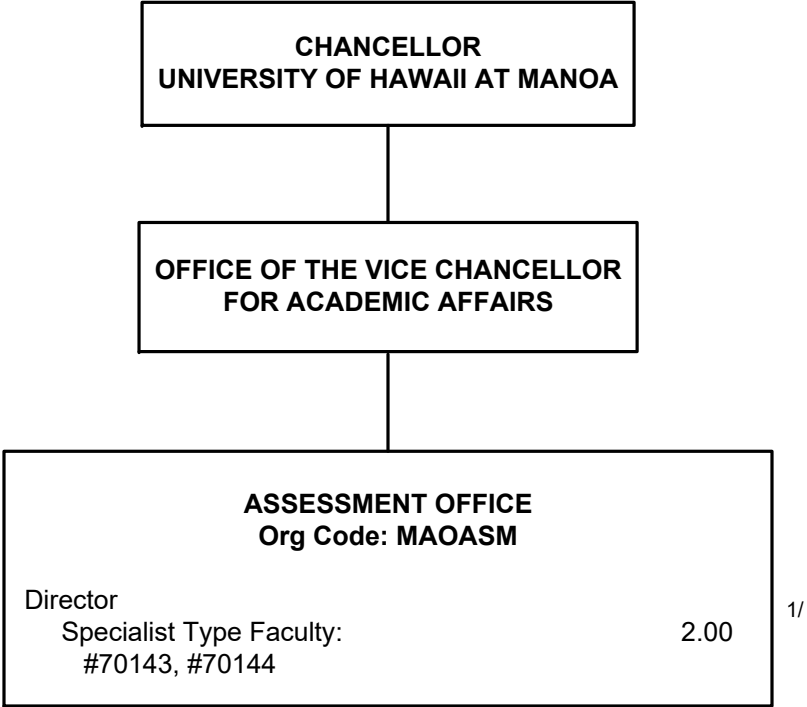
STATE OF HAWAI'I
UNIVERSITY OF HAWAI'I
UNIVERSITY OF HAWAI'I AT MĀNOA
OFFICE OF THE VICE CHANCELLOR
FOR ACADEMIC AFFAIRS
ACADEMIC PERSONNEL OFFICE

Position Organization Chart
Chart II-C



STATE OF HAWAI'I
UNIVERSITY OF HAWAI'I
UNIVERSITY OF HAWAI'I AT MĀNOA
OFFICE OF THE VICE CHANCELLOR
FOR ACADEMIC AFFAIRS
MĀNOA INSTITUTIONAL RESEARCH

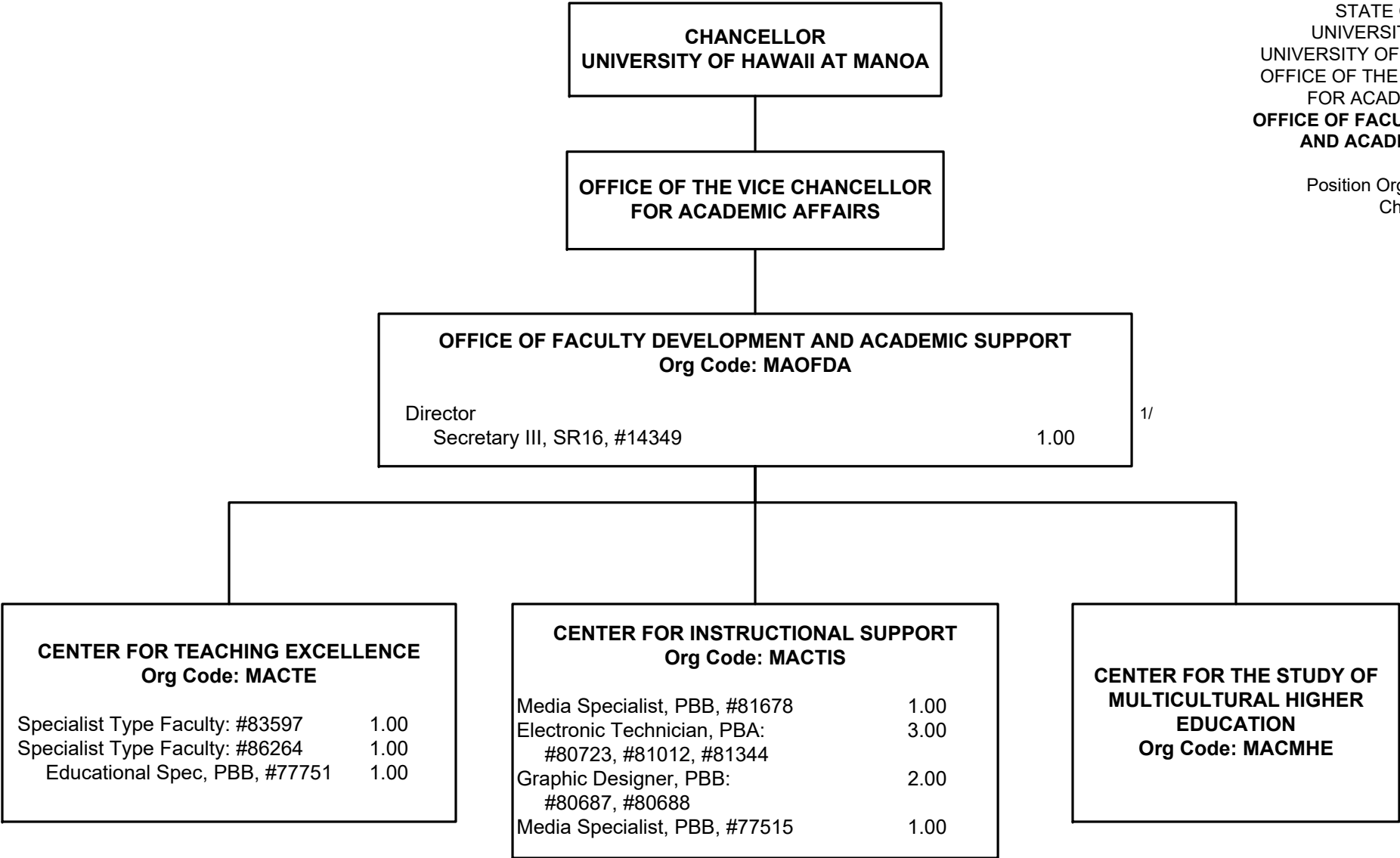
Position Organization Chart
Chart II-D



STATE OF HAWAI'I
UNIVERSITY OF HAWAI'I
UNIVERSITY OF HAWAI'I AT MĀNOA
OFFICE OF THE VICE CHANCELLOR
FOR ACADEMIC AFFAIRS
ASSESSMENT OFFICE

Position Organization Chart
Chart II-E

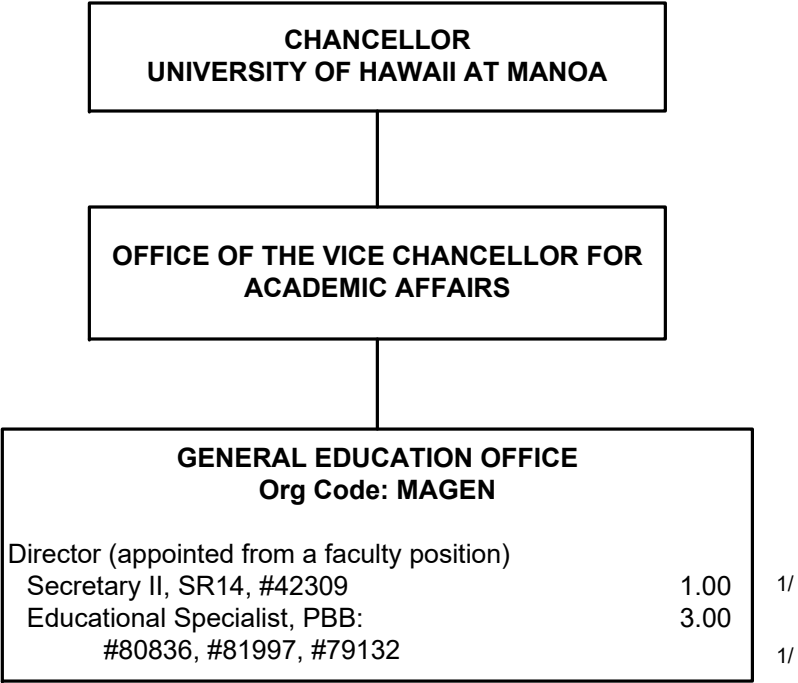
1/ Director appointed from a faculty position to oversee Assessment operations.



STATE OF HAWAI'I
UNIVERSITY OF HAWAI'I
UNIVERSITY OF HAWAI'I AT MĀNOA
OFFICE OF THE VICE CHANCELLOR
FOR ACADEMIC AFFAIRS
OFFICE OF FACULTY DEVELOPMENT
AND ACADEMIC SUPPORT

Position Organization Chart
Chart II-F

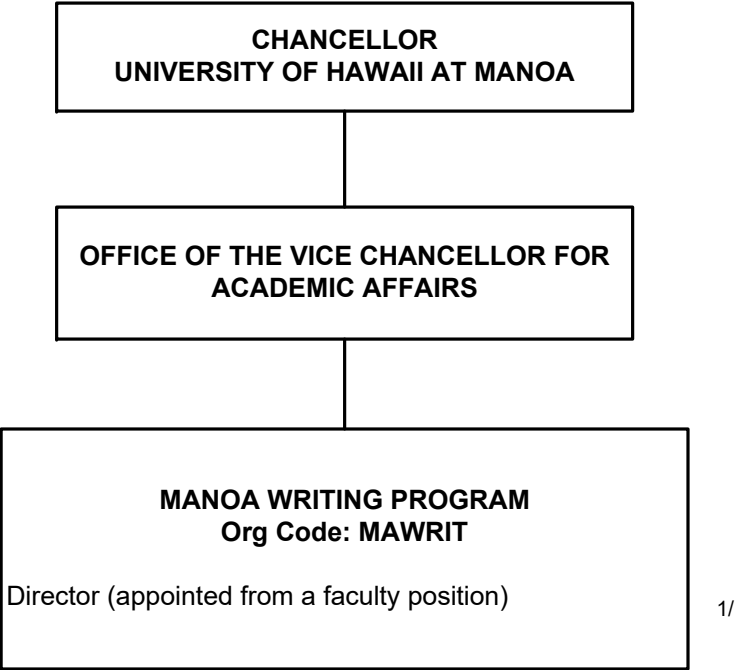
1/ Director appointed from a faculty position to oversee OFDAS operations.



STATE OF HAWAI'I
UNIVERSITY OF HAWAI'I
UNIVERSITY OF HAWAI'I AT MĀNOA
OFFICE OF THE VICE CHANCELLOR
FOR ACADEMIC AFFAIRS
GENERAL EDUCATION OFFICE

Position Organization Chart
Chart II-G

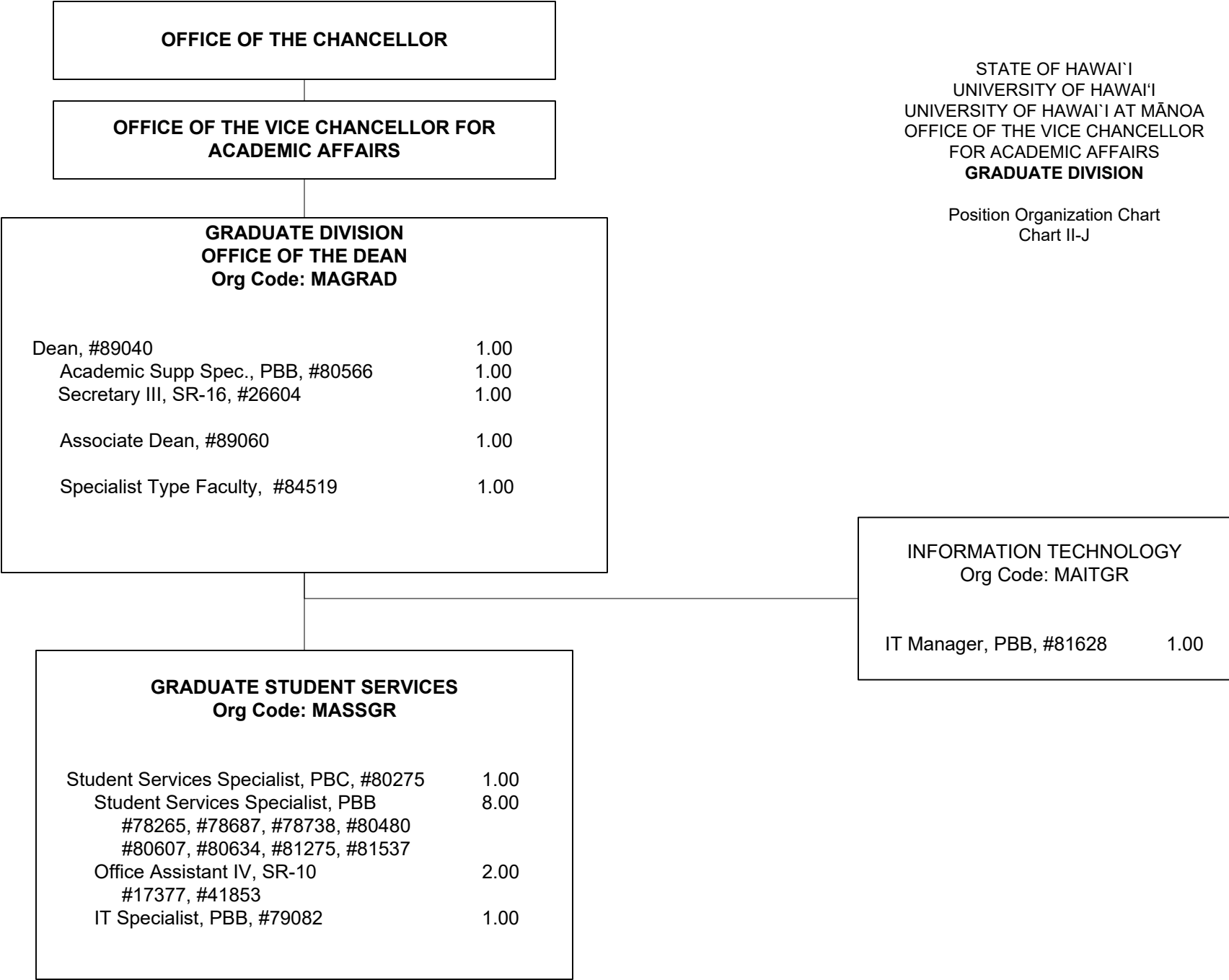
1/ Secretary II, #42309 and Educ Spec, #81997 partially support the Mānoa Writing Program.



STATE OF HAWAI'I
UNIVERSITY OF HAWAI'I
UNIVERSITY OF HAWAI'I AT MĀNOA
OFFICE OF THE VICE CHANCELLOR
FOR ACADEMIC AFFAIRS
MĀNOA WRITING PROGRAM

Position Organization Chart
Chart II-H

1/ Positions in the General Education Office partially support this Office: Secretary II, SR14, #42309 and Educational Specialists, PBB, #80836, #81997. Primary supervisor is General Education Office Director.



STATE OF HAWAI'I
UNIVERSITY OF HAWAI'I
UNIVERSITY OF HAWAI'I AT MĀNOA
OFFICE OF THE VICE CHANCELLOR
FOR ACADEMIC AFFAIRS
GRADUATE DIVISION

Position Organization Chart
Chart II-J