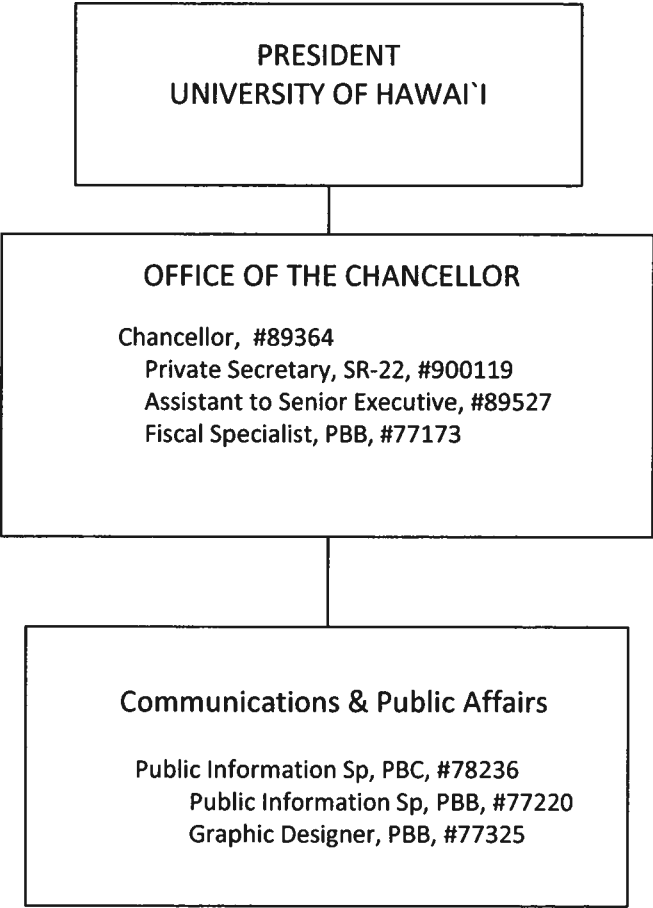


STATE OF HAWAI'I  
UNIVERSITY OF HAWAI'I  
UNIVERSITY OF HAWAI'I – WEST O`AHU  
  
POSITION ORGANIZATION CHART  
CHART I

----- Dotted lines denotes advisory role



**CHART UPDATED**  
**DATE: July 1, 2018**

OFFICE OF THE VICE CHANCELLOR FOR STUDENT AFFAIRS

Vice Chancellor, #89292  
Instruc & Student Sup Sp, PBA, #78484

STATE OF HAWAI'I  
UNIVERSITY OF HAWAI'I  
UNIVERSITY OF HAWAI'I – WEST O`AHU  
OFFICE OF THE VICE CHANCELLOR FOR STUDENT  
AFFAIRS

POSITION ORGANIZATION CHART  
CHART III

General Funds 46.00

DIVISIONAL & INSTITUTIONAL SUPPORT

UNIT LEAD (to be appointed from BOR position)  
Student Serv Sp, PBC, #77839  
Student Serv Sp, PBB, #81144  
Admissions Sp, PBB, #81807  
Specialist Faculty Position, #76346, #88834

ENROLLMENT SERVICES

Admissions Mgr, PBC, #78469  
Instruc & Student Sup Sp, PBA, #79821  
Office Assistant IV, SR-10, #49249

ADMISSIONS

Admissions Sp, PBB, #78482  
Admissions Sp, PBB, #78483  
Admissions Sp, PBB, #80415  
Admissions Sp, PBB, #78127  
Admissions Sp, PBA, #78671

REGISTRATION & RECORDS

Registrar, PBB, #78376  
Asst Registrar, PBB, #81836  
Student Serv Sp, PBB, #77065  
Student Serv Sp, PBA, #80714,

FINANCIAL AID

Financial Aid Mgr, PBC, #78125  
Financial Aid Sp, PBB, #77645  
Financial Aid Sp, PBB, #78126  
Financial Aid Sp, PBA, #77350

STUDENT DEVELOPMENT

Specialist Faculty Position, #83711

ADVISING SERVICES

UNIT LEAD (to be appointed from BOR position)  
Academic Advisor, PBB, #77387, #77506 #78485  
Specialist Faculty Position, #76347, #76348, #76350, #76377

CAREER DEVELOPMENT

Specialist Faculty Position, #76303  
Student Serv Sp, PBB, #80111

STUDENT LIFE

Specialist Faculty Position, #76354  
Student Activities Off, PBB, #77164  
Student Serv Sp, PBB, #77793

STUDENT ENGAGEMENT

Specialist Faculty Position, #76270  
Student Serv Sp, PBB, #81221

NOEAU LEARNING CENTER

Specialist Faculty Position, #76336, #76338, #76380

COUNSELING SERVICES

Specialist Faculty Position, #76298

DISABILITY SERVICES

Specialist Faculty Position, #76366

HEALTH & WELLNESS EDUCATION

STUDENT EQUITY & ACCESS

Specialist Faculty Position, #76364

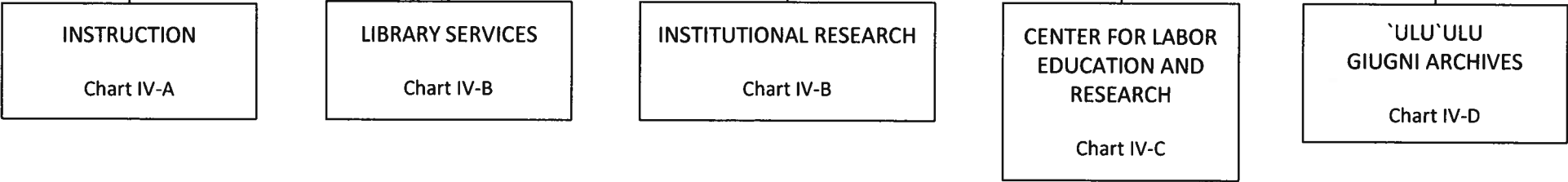
New Positions Pending Establishment  
#99303F, #99813F

OFFICE OF THE VICE CHANCELLOR FOR ACADEMIC AFFAIRS

- Vice Chancellor, #89449
  - Secretary III, SR-16, #50001
    - Office Assistant IV, SR-10, #900625, #900412\*\*
  - Associate Vice Chancellor, #89494
    - Academic Support, PBB, #81693
    - Academic Support, PBC, #79846
    - Academic Support, PBB, #77584
    - Academic Support, PBB, #77598
    - Admin & Fiscal Supp Sp, PBA, #80647
    - Academic Support, PBB, #81024
    - Administrative Off, PBB, #81299
      - Admin & Fiscal Supp Sp, PBA, #77363
    - Faculty Specialist Position, #76299
      - Distance Education Sp, PBB, #77222

STATE OF HAWAI'I  
UNIVERSITY OF HAWAI'I  
UNIVERSITY OF HAWAI'I – WEST O`AHU  
OFFICE OF THE VICE CHANCELLOR FOR  
ACADEMIC AFFAIRS  
  
POSITION ORGANIZATION CHART  
CHART IV

General Funds 14.00  
\*\*Special Funds 1.00 (BT)

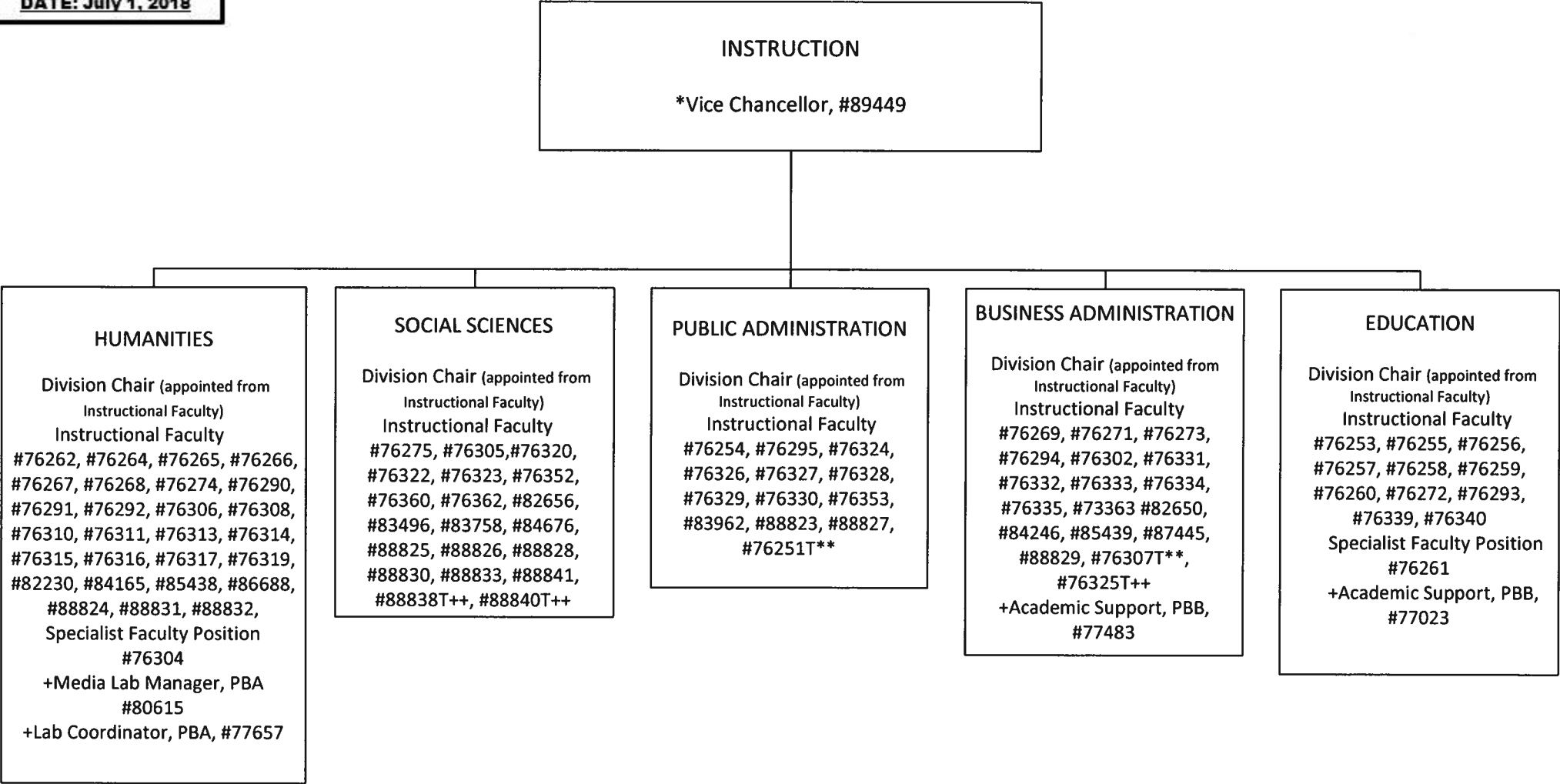


\*\*Budgeted temporary position

+Position reports to Faculty Specialist, #76304

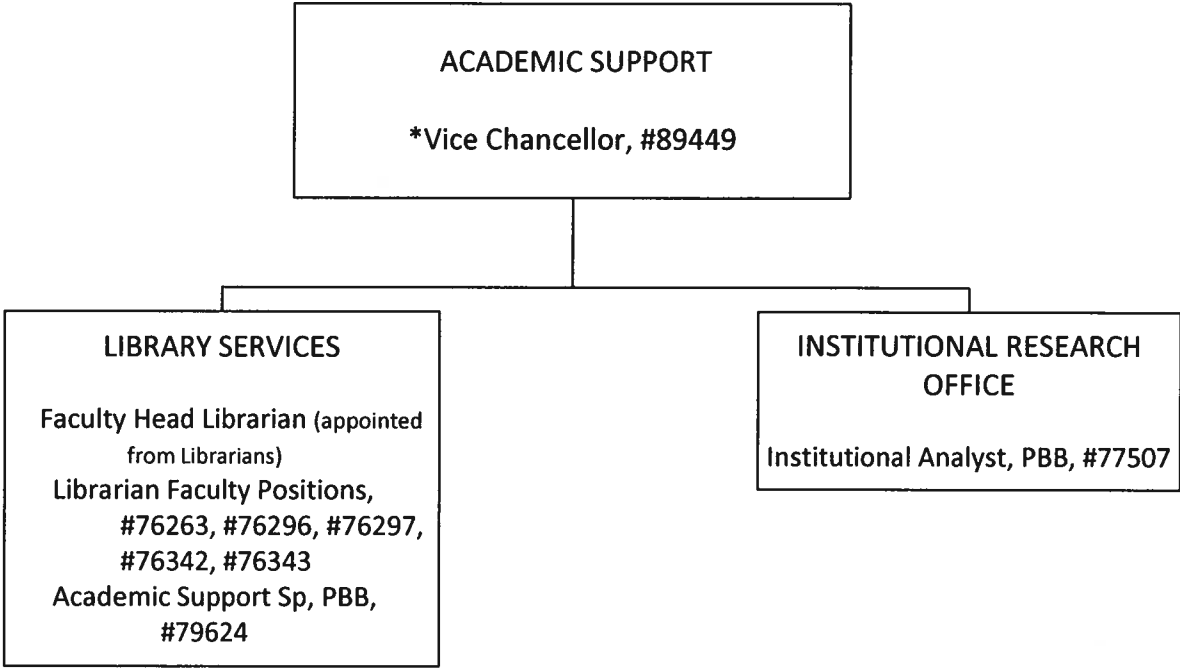
POSITION ORGANIZATION CHART  
CHART IV-A

General Funds 94.20  
\*\*General Funds 2.00 (BT)  
++Special Funds 3.00 (BT)



\*Position count not included on this page  
+ Reports to Division Chair or  
assigned Department Coordinator

New Health Sciences positions,  
#76379, #76381, #76382, #76383,  
#99818F (.20FTE)

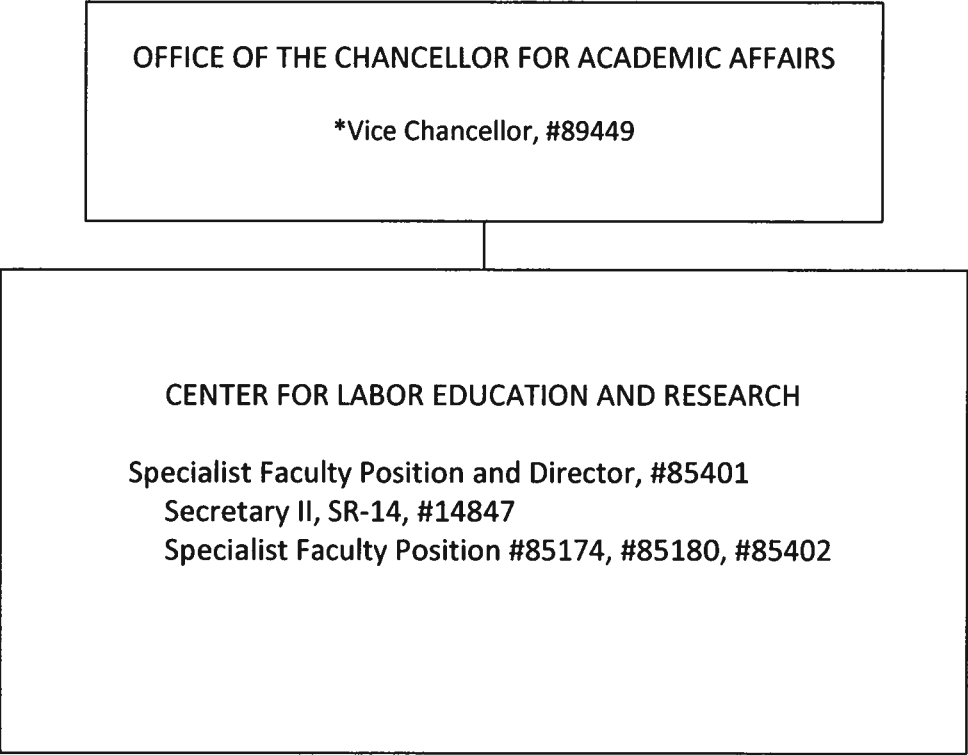


STATE OF HAWAI'I  
UNIVERSITY OF HAWAI'I  
UNIVERSITY OF HAWAI'I – WEST O`AHU  
OFFICE OF THE VICE CHANCELLOR FOR  
ACADEMIC AFFAIRS  
ACADEMIC SUPPORT

POSITION ORGANIZATION CHART  
CHART IV-B

General Funds 7.00

\*Position count not included on this page

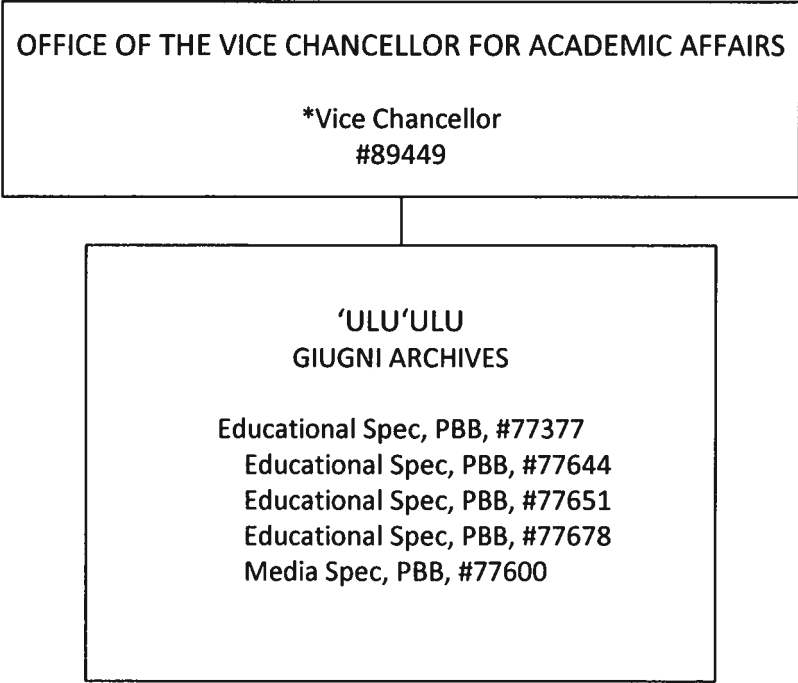


STATE OF HAWAI'I  
UNIVERSITY OF HAWAI'I  
UNIVERSITY OF HAWAI'I – WEST O`AHU  
OFFICE OF THE VICE CHANCELLOR FOR  
ACADEMIC AFFAIRS  
CENTER FOR LABOR EDUCATION AND  
RESEARCH

POSITION ORGANIZATION CHART  
CHART IV-C

General Funds 5.00

\*Position count not included on this page



STATE OF HAWAI'I  
UNIVERSITY OF HAWAI'I  
UNIVERSITY OF HAWAI'I – WEST O'AHU  
OFFICE OF THE VICE CHANCELLOR FOR  
ACADEMIC AFFAIRS  
'ULU'ULU  
GIUGNI ARCHIVES

POSITION ORGANIZATION CHART  
CHART IV-D

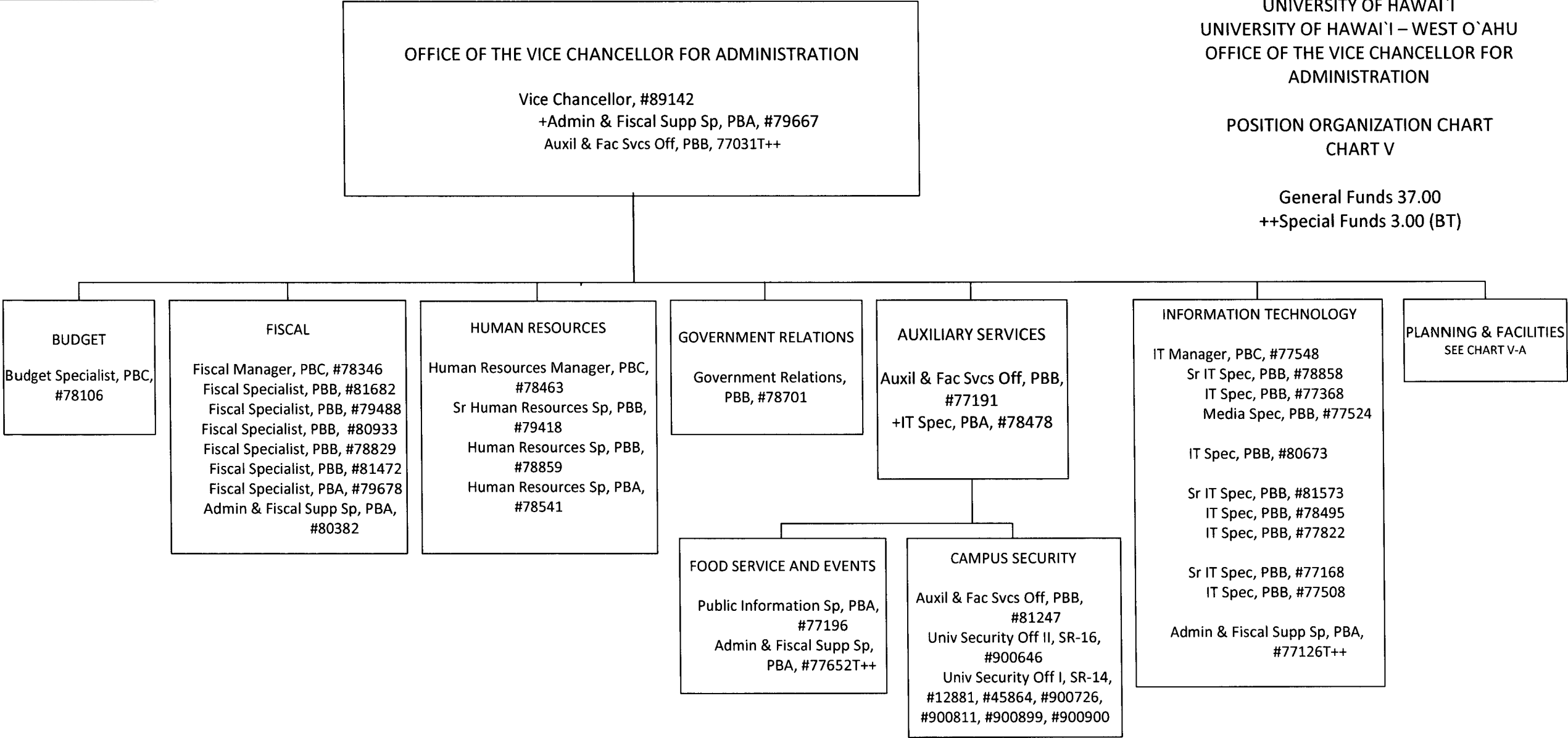
General Funds 5.00

\*Position count not included on this page



POSITION ORGANIZATION CHART  
CHART V

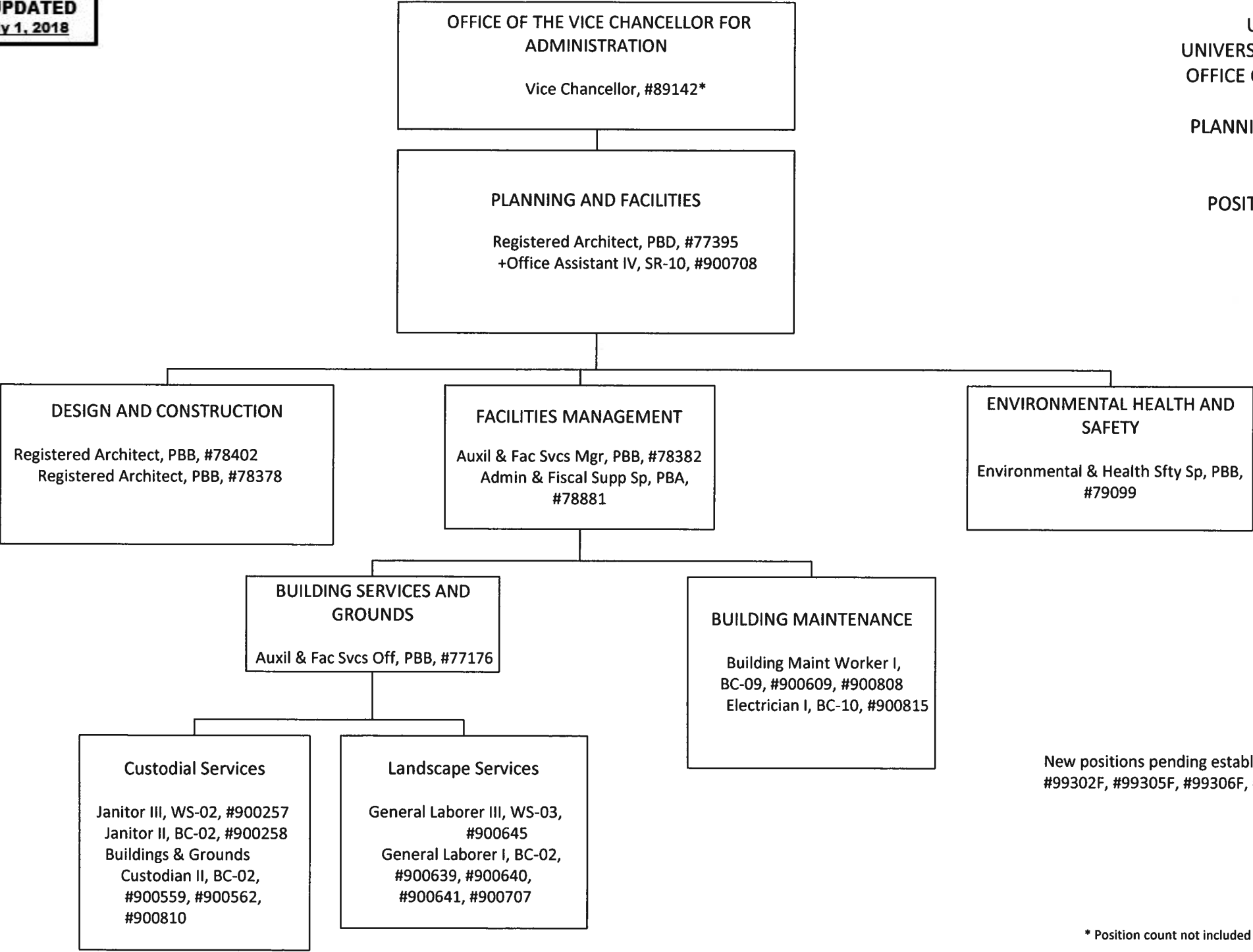
General Funds 37.00  
++Special Funds 3.00 (BT)



+ Position to be redescribed  
++Budgeted temporary position

POSITION ORGANIZATION CHART  
CHART V-A

General Funds 25.00



New positions pending establishment 7/1/18  
#99302F, #99305F, #99306F, #99307F

\* Position count not included on this page  
+ Position to be redescribed