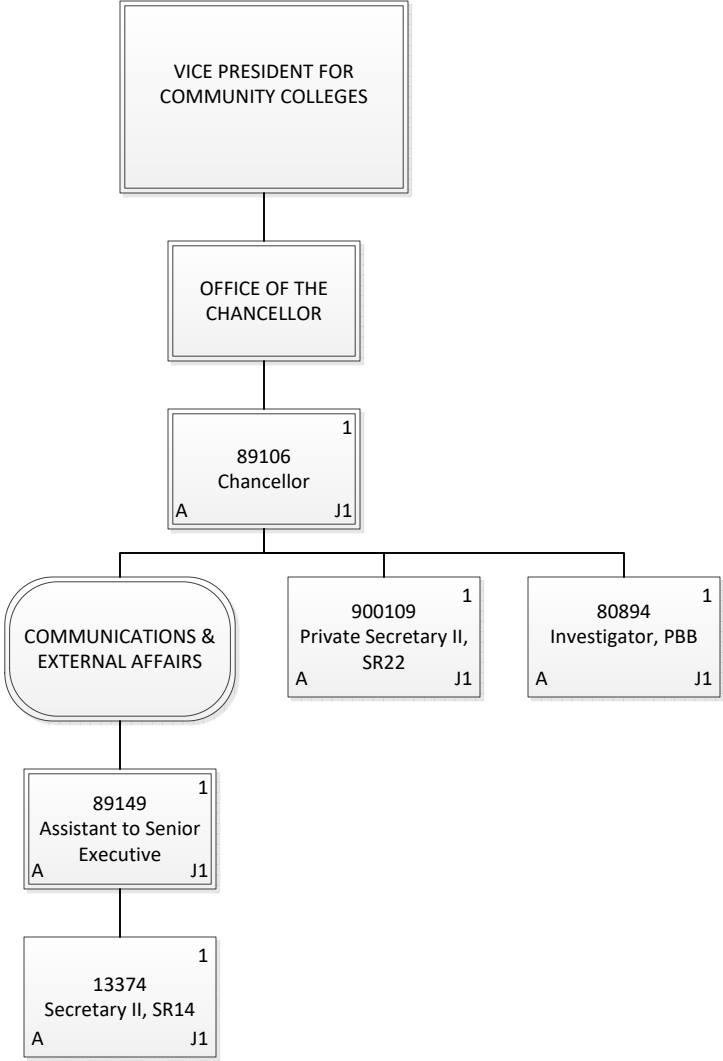
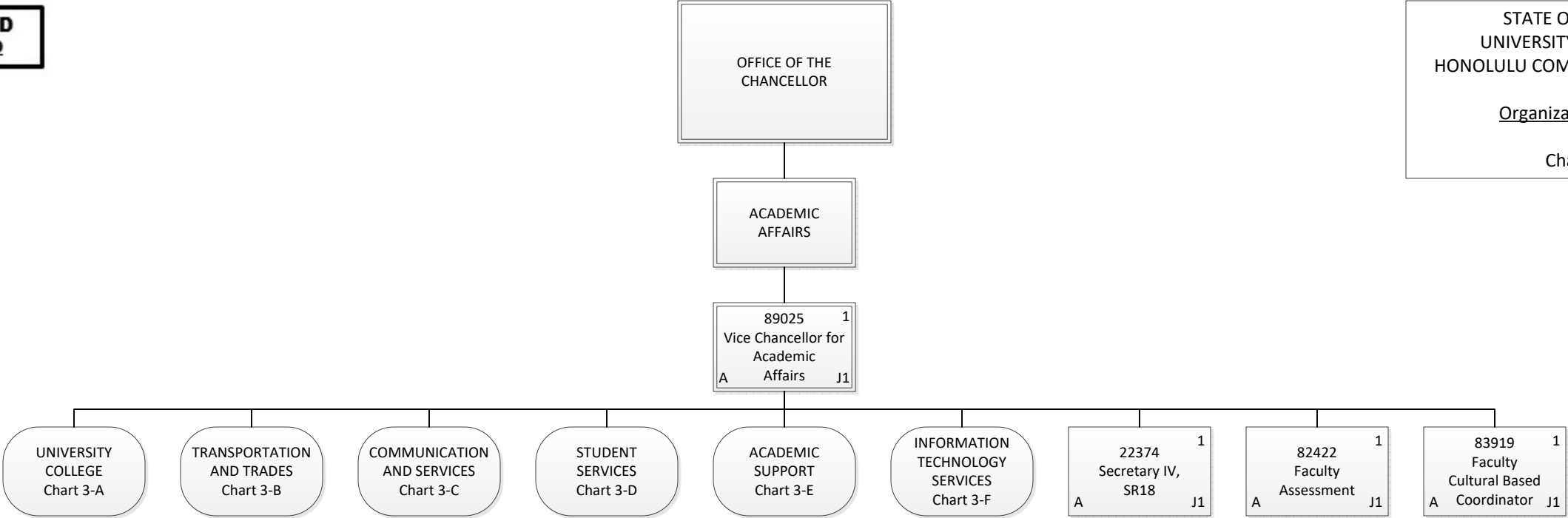


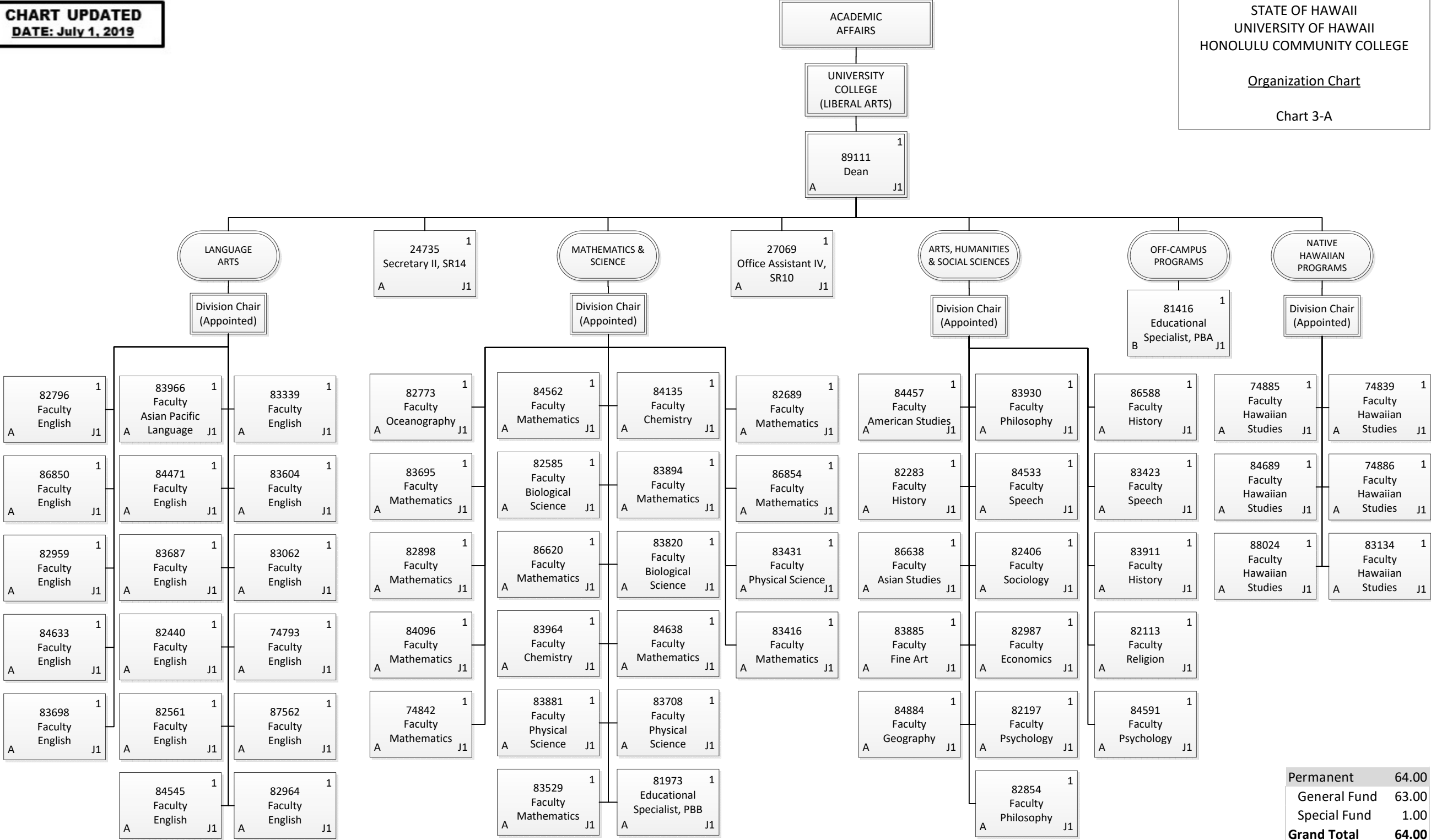
Permanent	328.00
General Fund	323.00
Special Fund	5.00
Temporary	3.00
General Fund	3.00
Grand Total	331.00



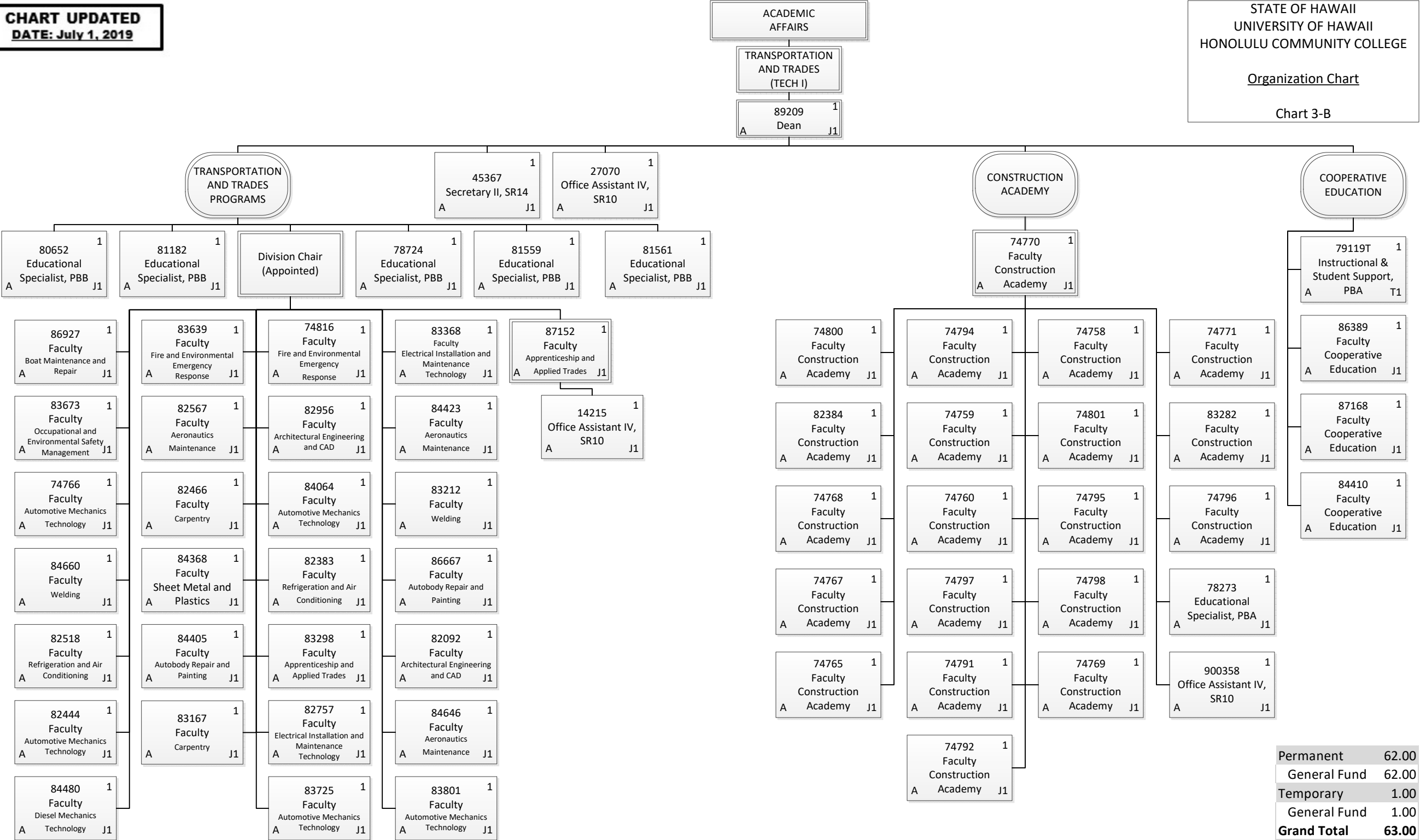
Permanent	5.00
General Fund	5.00
Grand Total	5.00

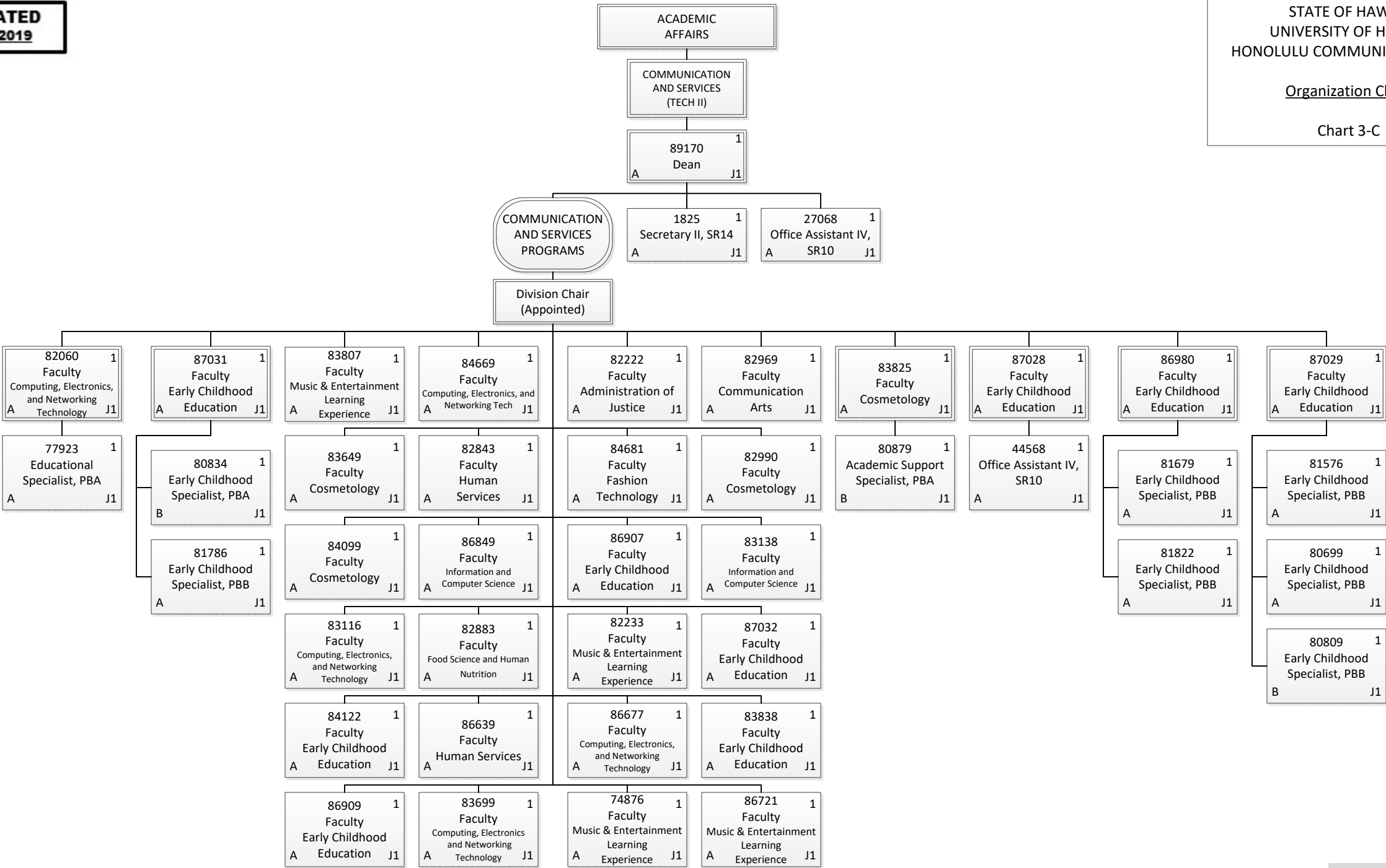


Permanent	4.00
General Fund	4.00
Grand Total	4.00

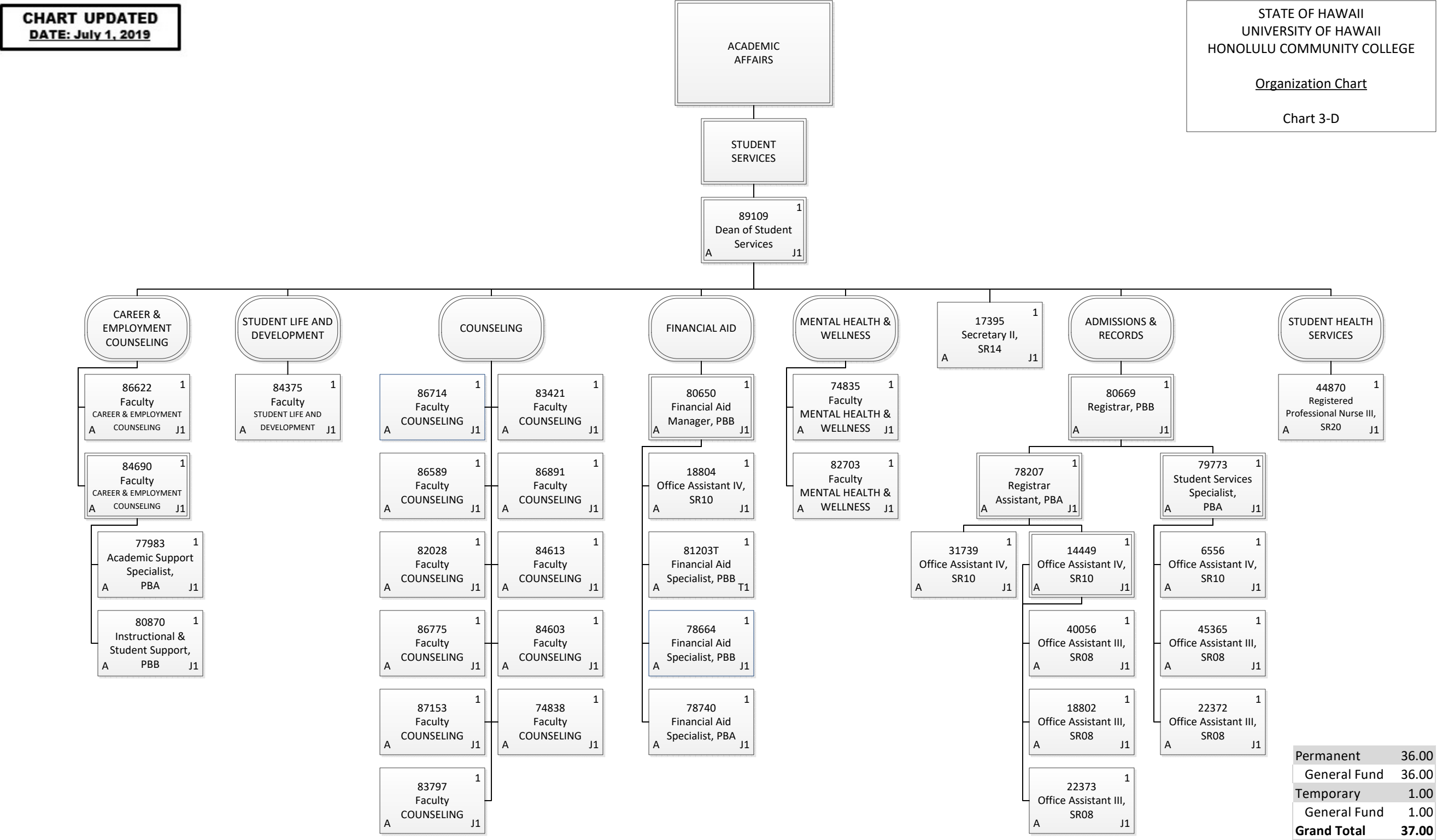


Permanent	64.00
General Fund	63.00
Special Fund	1.00
Grand Total	64.00

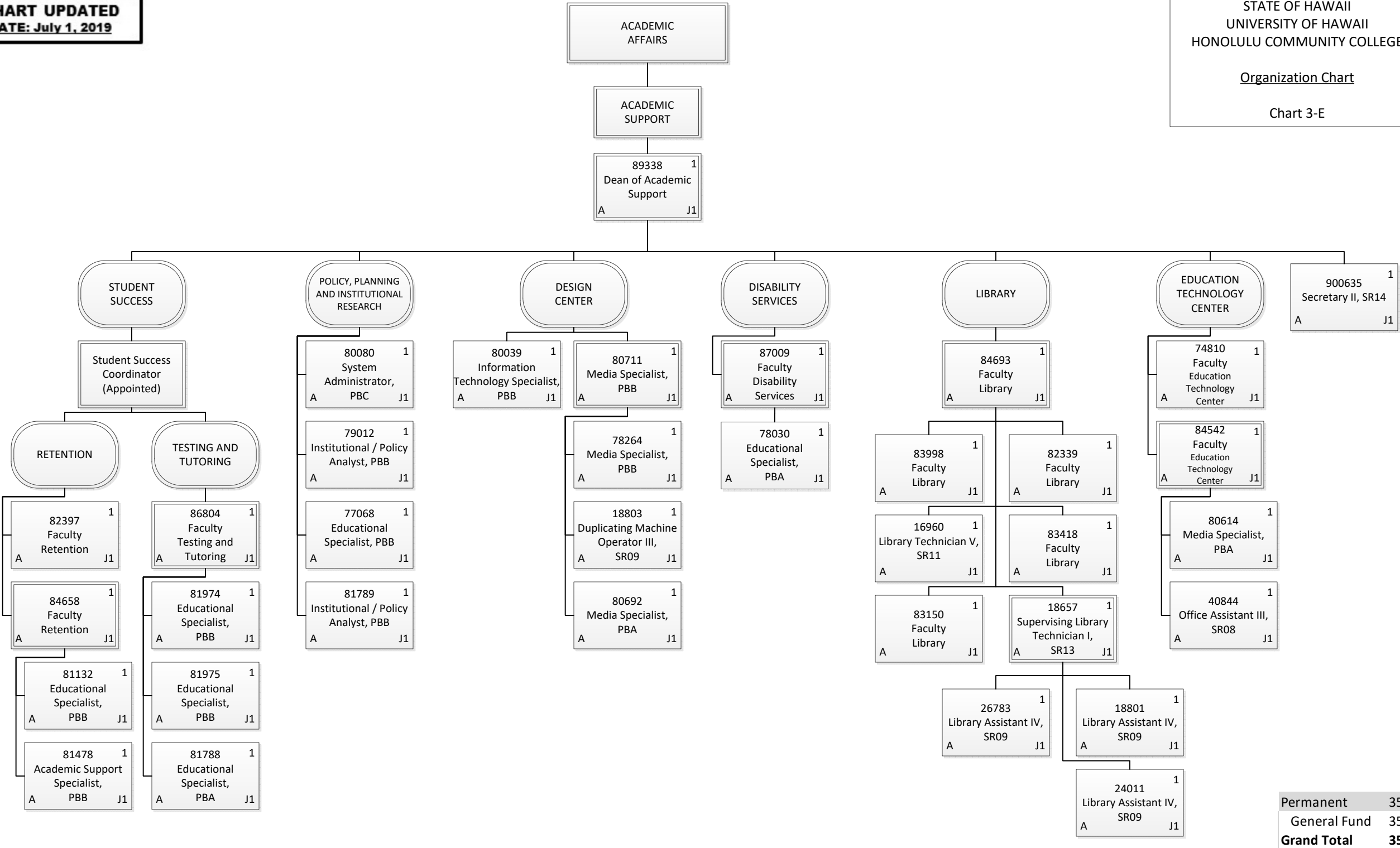


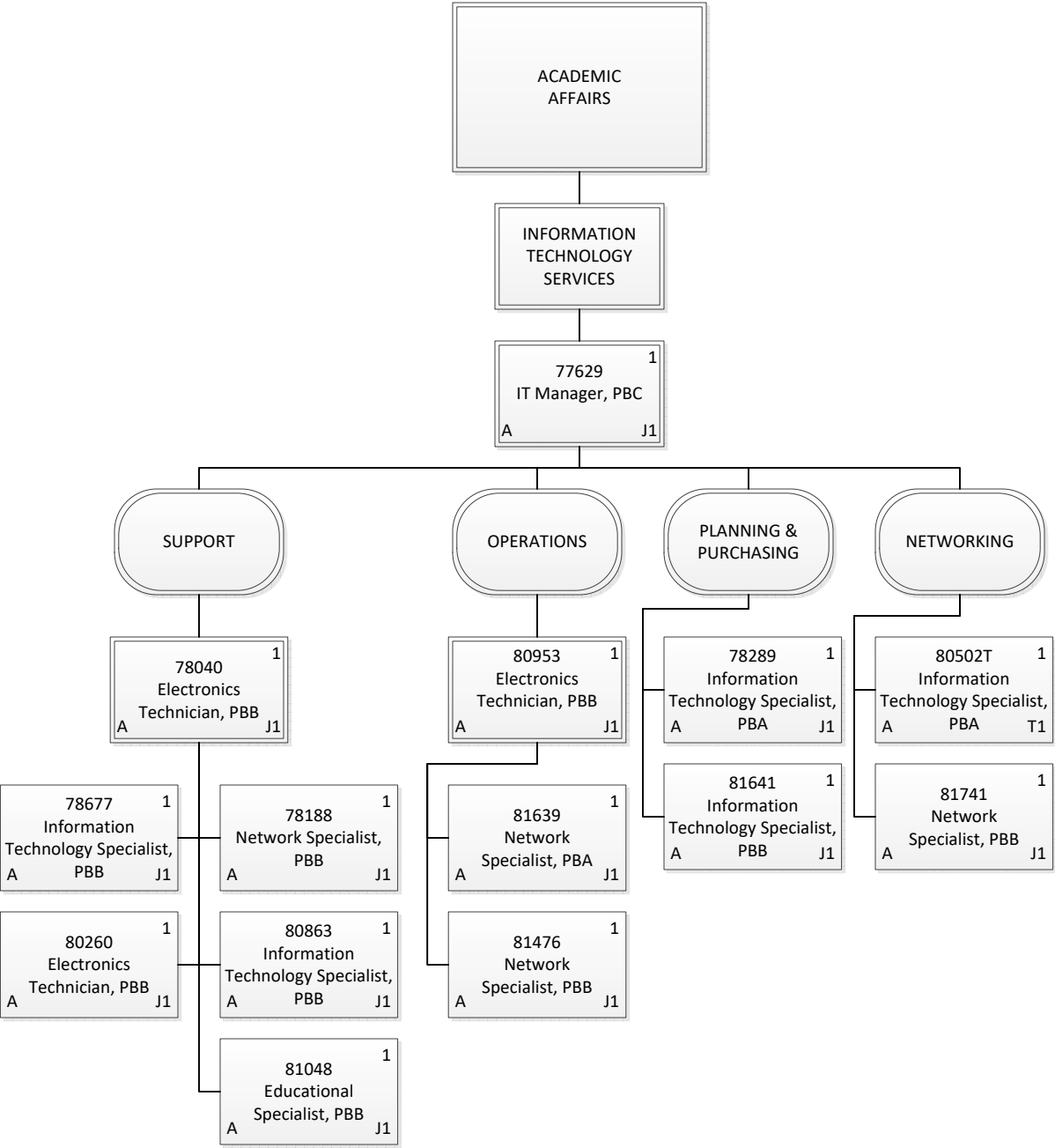


Permanent	43.00
General Fund	40.00
Special Fund	3.00
Grand Total	43.00

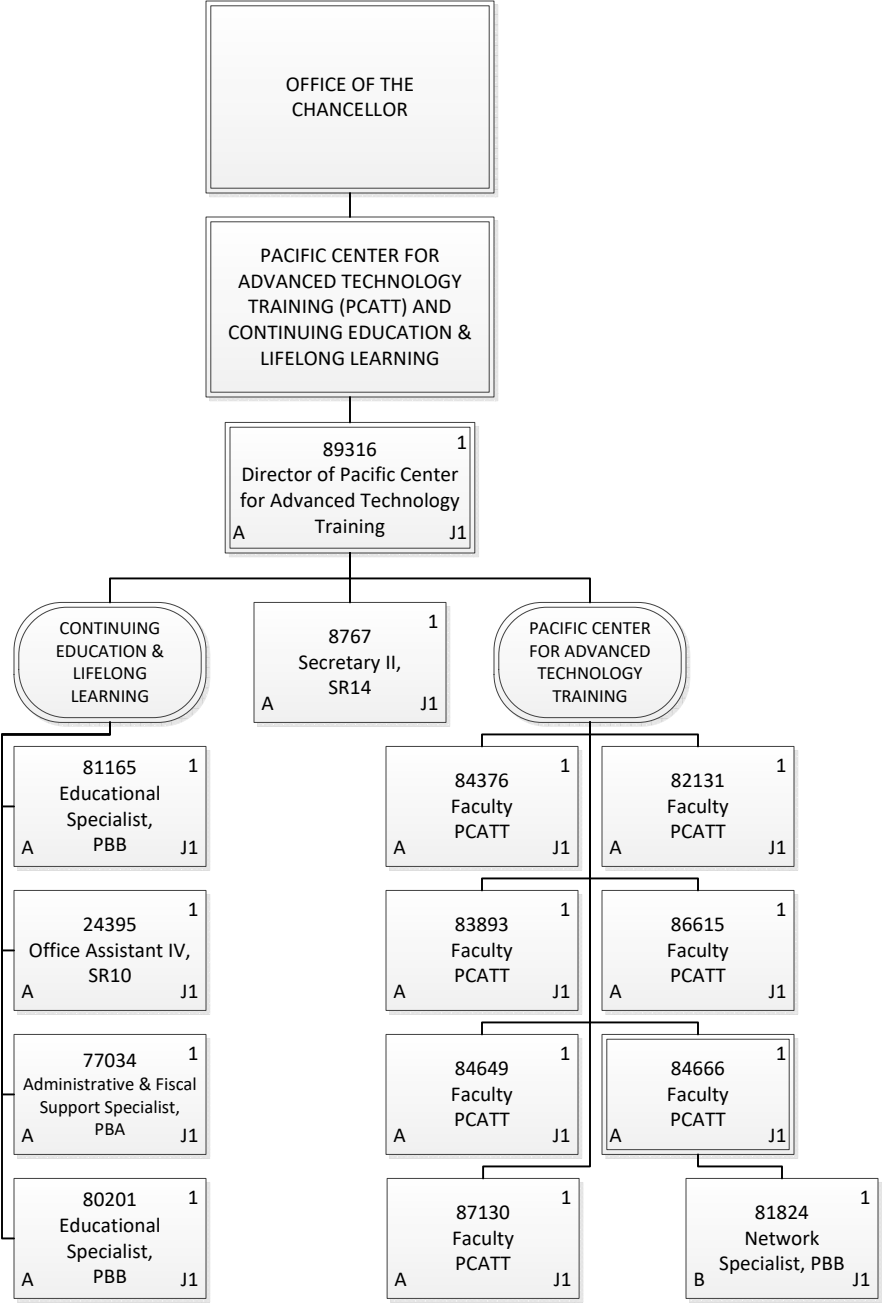


Permanent	36.00
General Fund	36.00
Temporary	1.00
General Fund	1.00
Grand Total	37.00

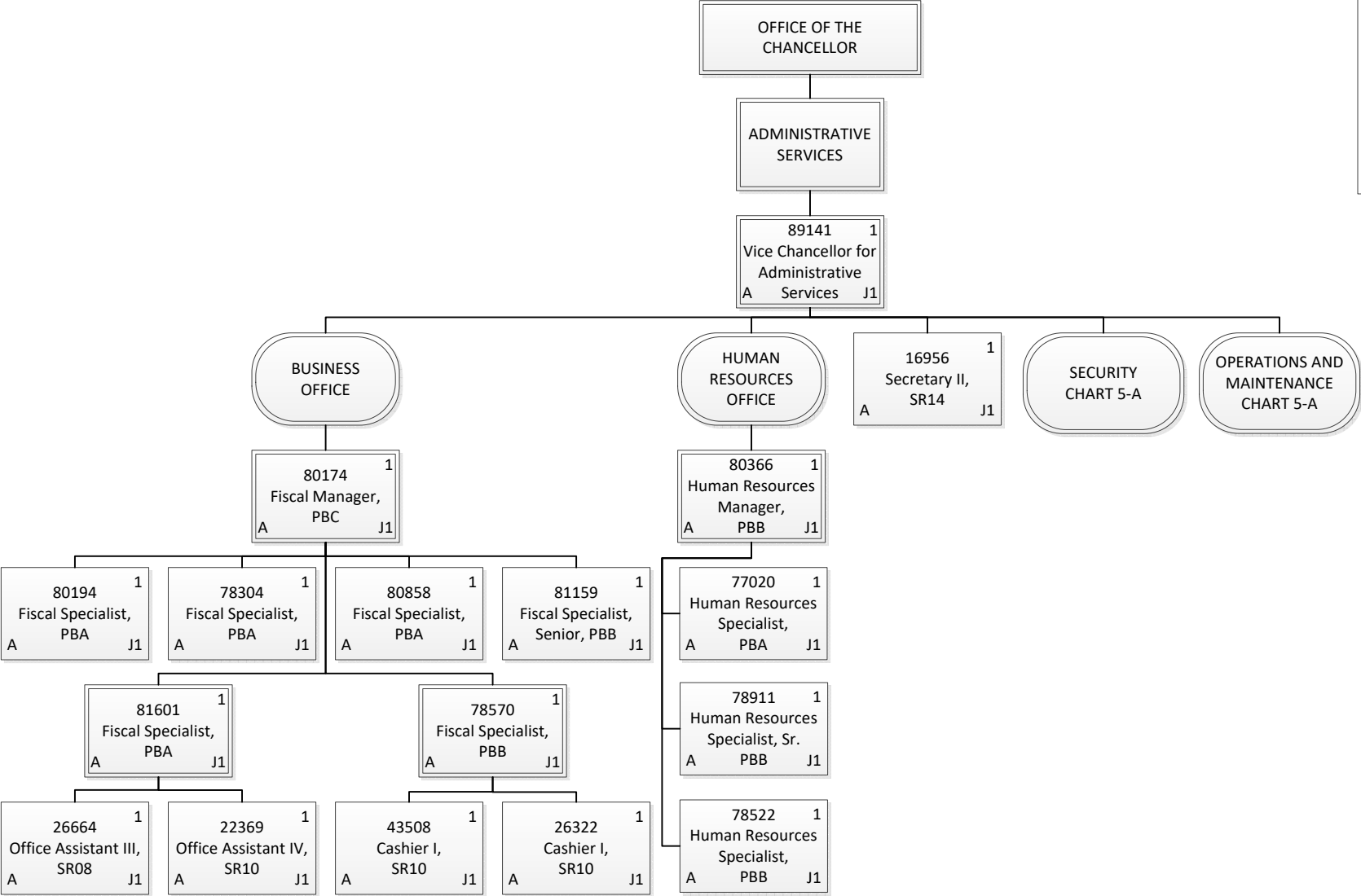




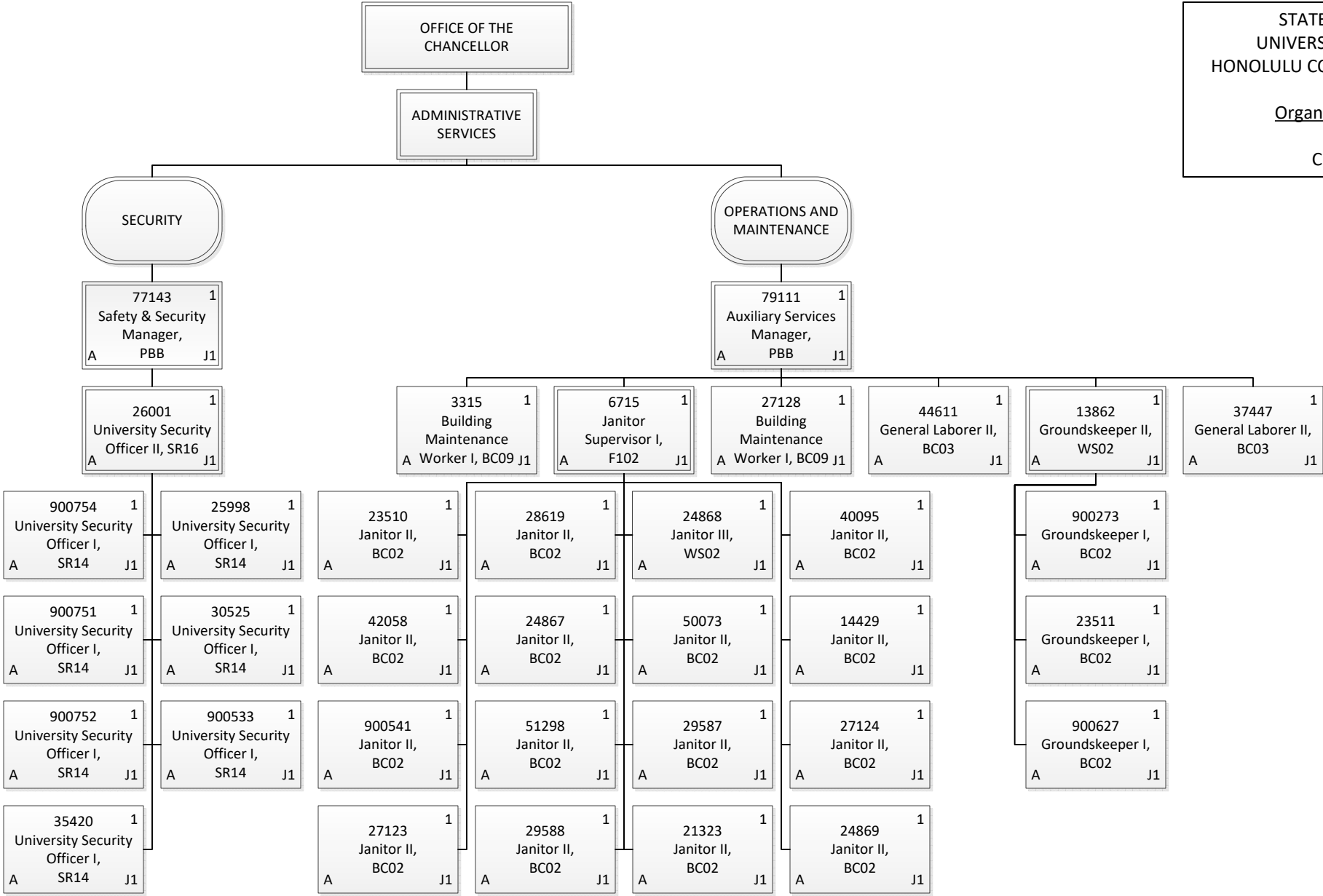
Permanent	13.00
General Fund	13.00
Temporary	1.00
General Fund	1.00
Grand Total	14.00



Permanent	14.00
General Fund	13.00
Special Fund	1.00
Grand Total	14.00



Permanent	17.00
General Fund	17.00
Grand Total	17.00



Permanent	35.00
General Fund	35.00
Grand Total	35.00