

<sup>1</sup> Excluded from position count  
<sup>2</sup> Appropriated but not established, 8 Special Fund (B) positions: 93926F – 93933F  
\* Positions appropriated to Manoa, reflected organizationally on this chart

	Perm
General Fund	6.00 (SW)
General Fund	3.00 (MA)*
Revolving Fund (W)	1.00 (SW)
Special Fund (B)	8.00 (SW) <sup>2</sup>

OFFICE OF THE VICE PRESIDENT FOR ADMINISTRATION

Vice President for Administration 89446<sup>1</sup>

STATE OF HAWAI'I  
UNIVERSITY OF HAWAI'I  
SYSTEMWIDE ADMINISTRATION  
VICE PRESIDENT FOR ADMINISTRATION  
OFFICE OF HUMAN RESOURCES

POSITION ORGANIZATION CHART

CHART II

OFFICE OF HUMAN RESOURCES

System Director of Human Resources		89310
Associate Director of Human Resources		89425
Human Resources Manager	PBD	77834*
Admin & Fiscal Support Sp	PBA	80093

EMPLOYEE SERVICES

COLLECTIVE BARGAINING AND EMPLOYEE RELATIONS

Director of Collective Bargaining and Employee Relations	89173
Labor Relations Officer	89567*

UNIT A

HR Specialist	PBC	78386*
HR Specialist	PBB	81866
HR Specialist	PBB	78543*
HR Specialist	PBB	80538
HR Specialist	PBA	80384
HR Specialist	PBA	80986*
HR Tech VI	SR-15	33088
HR Tech VII	SR-17	003395

UNIT B

HR Manager	PBC	80092
HR Specialist	PBB	78393
HR Specialist	PBB	81200*
HR Specialist	PBA	78683*
HR Specialist	PBA	80179*
HR Specialist	PBA	81834
HR Assistant V	SR-13	42423
HR Assistant V	SR-13	12260

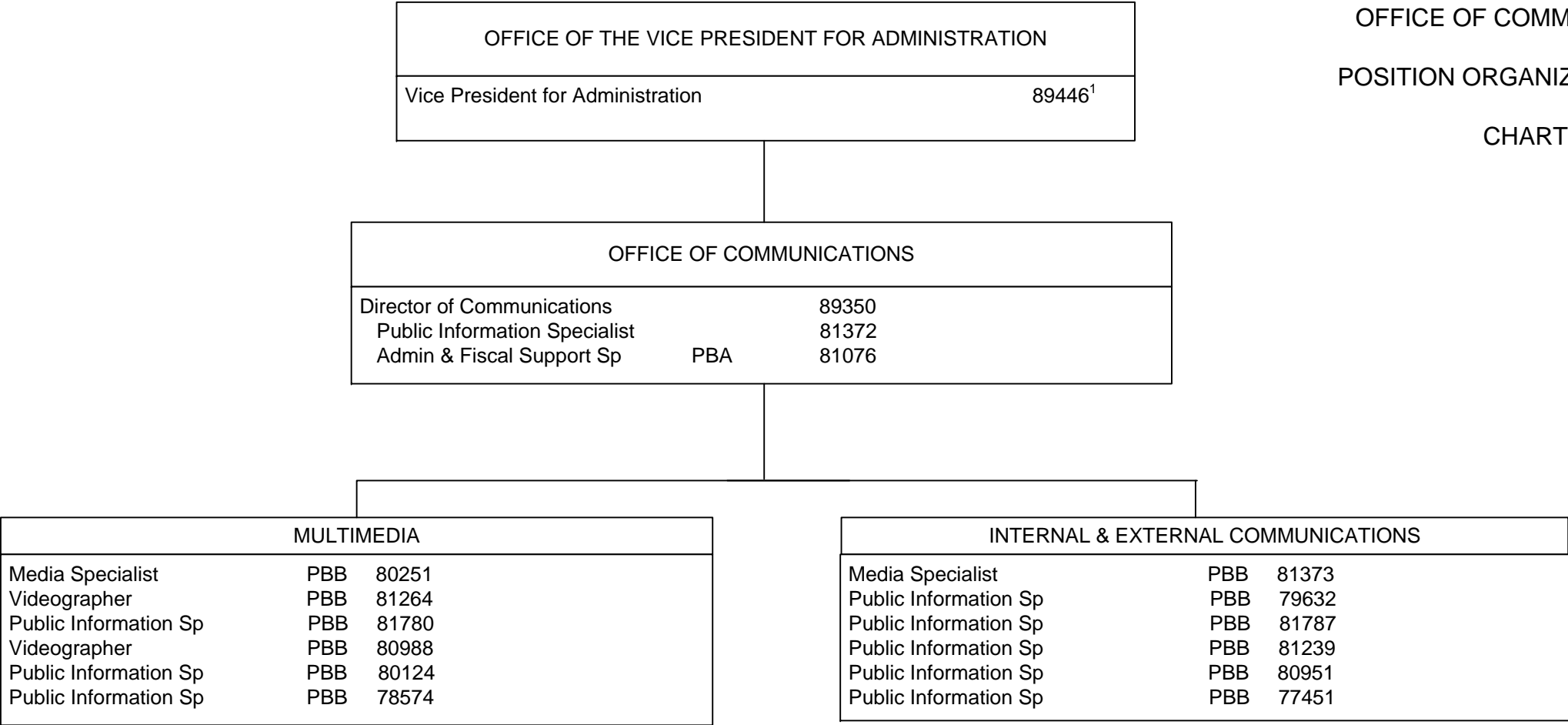
POLICIES & PROCEDURES & CLASSIFICATION

HR Specialist, Sr	PBC	80540
-------------------	-----	-------

Perm  
General Fund 15.00 (SW)  
General Fund 8.00 (MA\*)

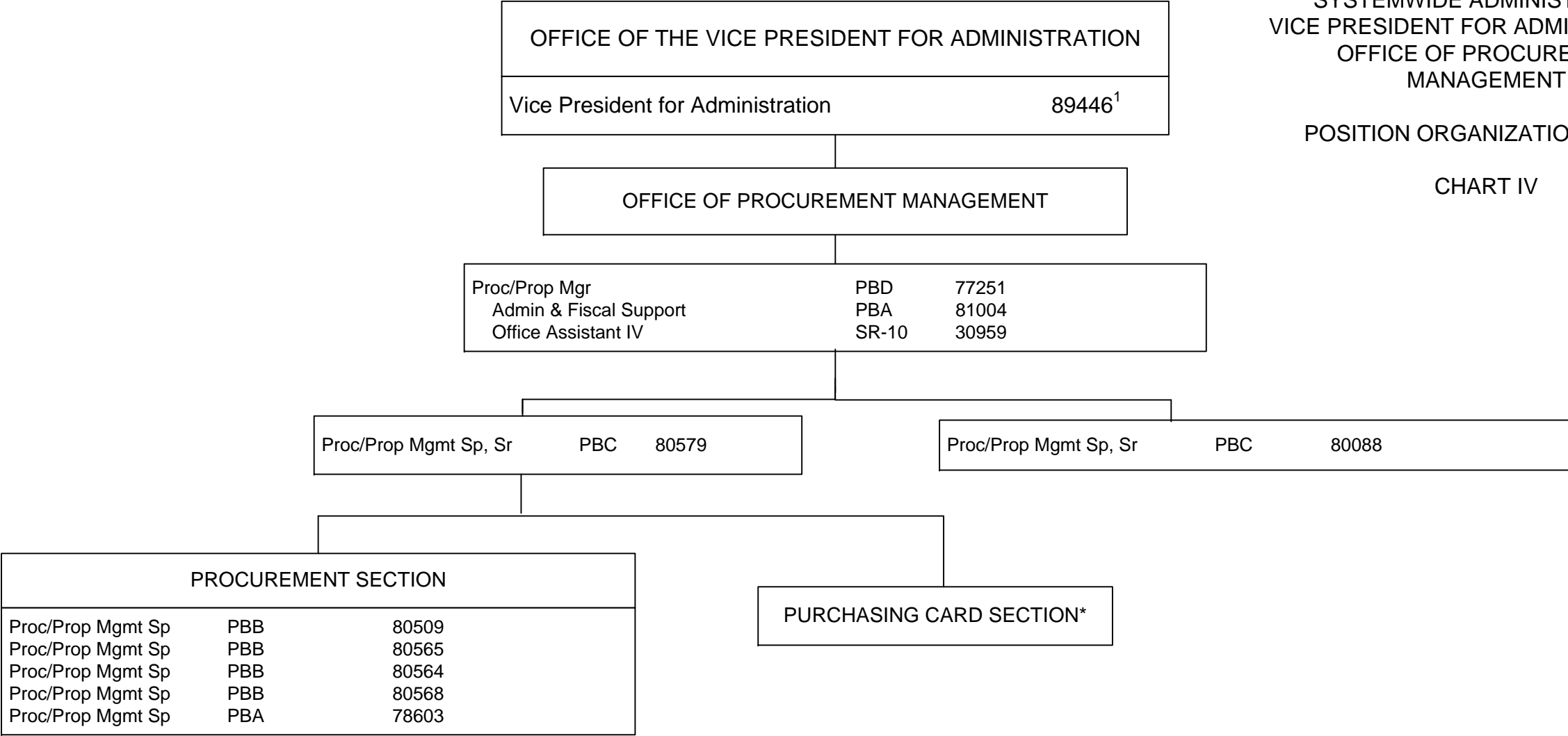
<sup>1</sup> Excluded from position count  
\* Positions appropriated to Manoa, reflected organizationally on this chart

STATE OF HAWAI'I  
UNIVERSITY OF HAWAI'I  
SYSTEMWIDE ADMINISTRATION  
VICE PRESIDENT FOR ADMINISTRATION  
OFFICE OF COMMUNICATIONS  
  
POSITION ORGANIZATION CHART  
  
CHART III



<sup>1</sup> Excluded from position count

STATE OF HAWAI‘I  
UNIVERSITY OF HAWAI‘I  
SYSTEMWIDE ADMINISTRATION  
VICE PRESIDENT FOR ADMINISTRATION  
OFFICE OF PROCUREMENT  
MANAGEMENT  
  
POSITION ORGANIZATION CHART  
  
CHART IV

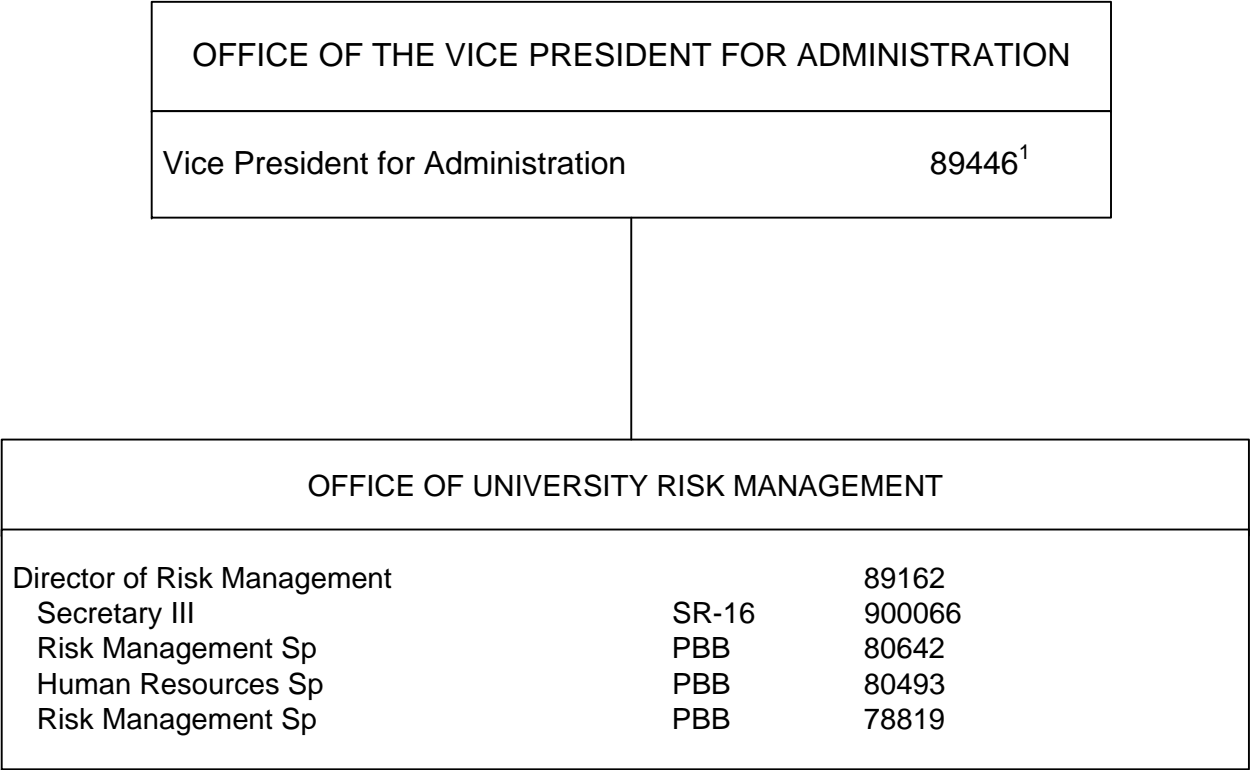


<sup>1</sup> Excluded from position count  
\* Includes temporary positions

STATE OF HAWAI'I  
UNIVERSITY OF HAWAI'I  
SYSTEMWIDE ADMINISTRATION  
VICE PRESIDENT FOR ADMINISTRATION  
OFFICE OF UNIVERSITY RISK  
MANAGEMENT

POSITION ORGANIZATION CHART

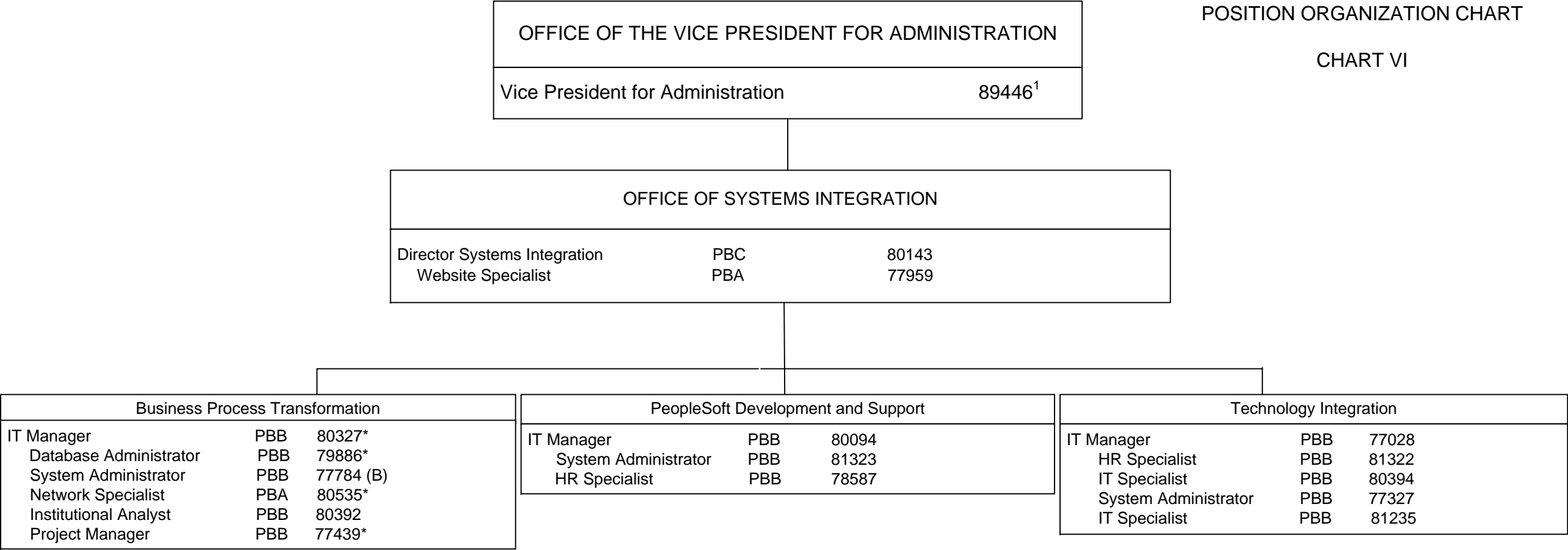
CHART V



<sup>1</sup> Excluded from position count

STATE OF HAWAI‘I  
UNIVERSITY OF HAWAI‘I  
SYSTEMWIDE ADMINISTRATION  
VICE PRESIDENT FOR ADMINISTRATION  
OFFICE OF SYSTEMS INTEGRATION

POSITION ORGANIZATION CHART  
CHART VI



<sup>1</sup> Excluded from position count  
\* Positions appropriated to Manoa, reflected organizationally on this chart

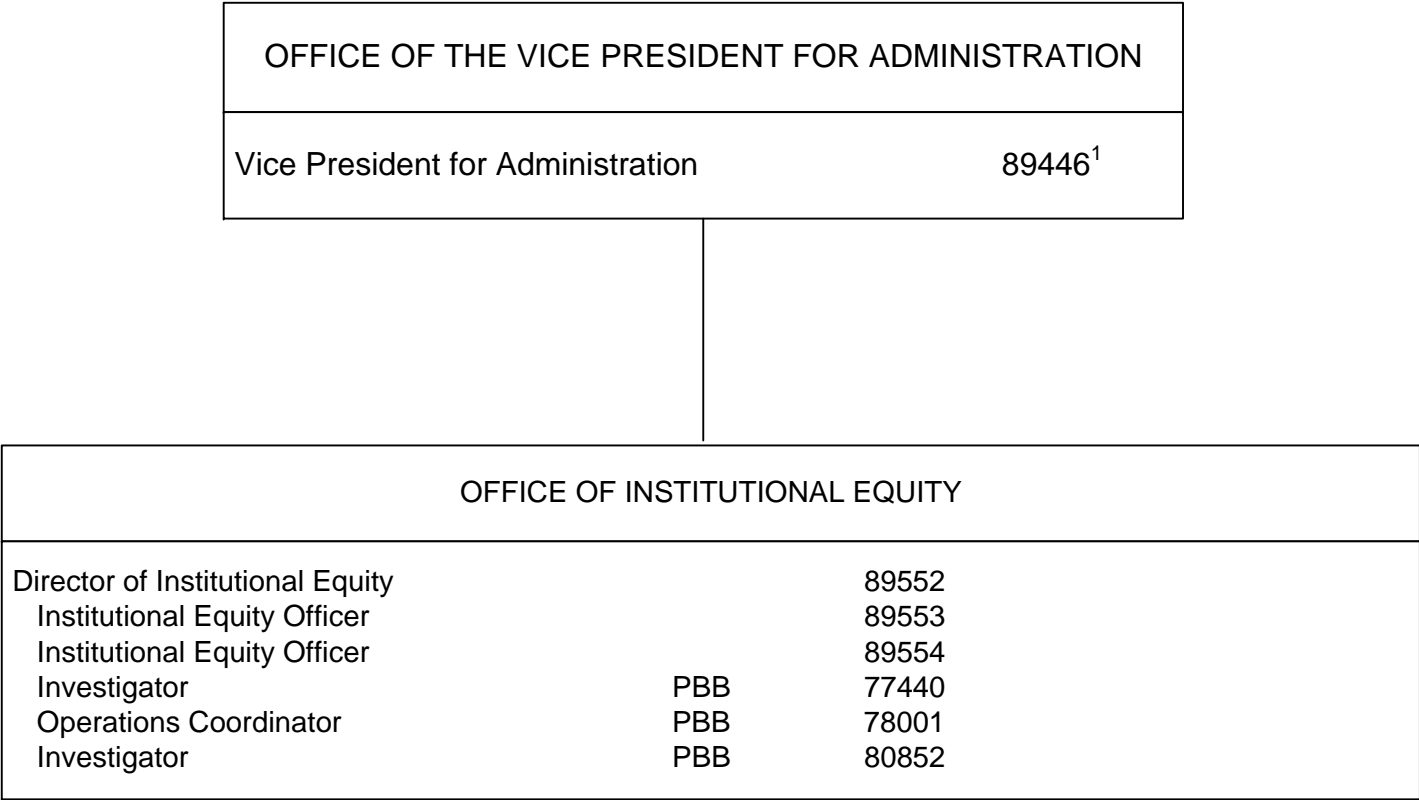
Perm

General Fund11.00 (SW)  
General Fund4.00 (MA)\*  
Special Fund (B)1.00 (SW)

STATE OF HAWAI‘I  
UNIVERSITY OF HAWAI‘I  
SYSTEMWIDE ADMINISTRATION  
VICE PRESIDENT FOR ADMINISTRATION  
OFFICE OF INSTITUTIONAL EQUITY

POSITION ORGANIZATION CHART

CHART VII



<sup>1</sup> Excluded from position count

OFFICE OF THE VICE PRESIDENT FOR ADMINISTRATION		
Vice President for Administration		89446 <sup>1</sup>

OFFICE OF SUSTAINABILITY		
Director of Energy Management		89524
Sustainability Coordinator	PBB	78394
Operations Coordinator	PBA	80991

STATE OF HAWAI'I  
UNIVERSITY OF HAWAI'I  
SYSTEMWIDE ADMINISTRATION  
VICE PRESIDENT FOR ADMINISTRATION  
OFFICE OF SUSTAINABILITY

POSITION ORGANIZATION CHART

CHART VIII

<sup>1</sup> Excluded from position count



STATE OF HAWAI'I  
UNIVERSITY OF HAWAI'I  
SYSTEMWIDE ADMINISTRATION  
VICE PRESIDENT FOR ADMINISTRATION  
OFFICE OF CAMPUS OPERATIONS & FACILITIES

POSITION ORGANIZATION CHART

CHART IX

OFFICE OF THE VICE PRESIDENT FOR ADMINISTRATION

Vice President for Administration89446<sup>1</sup>

OFFICE OF CAMPUS OPERATIONS & FACILITIES

Director

Auxil & Fac Svcs Mgr

Auxil & Fac Svcs Off

Registered Architect

PBD

PBC

PBB

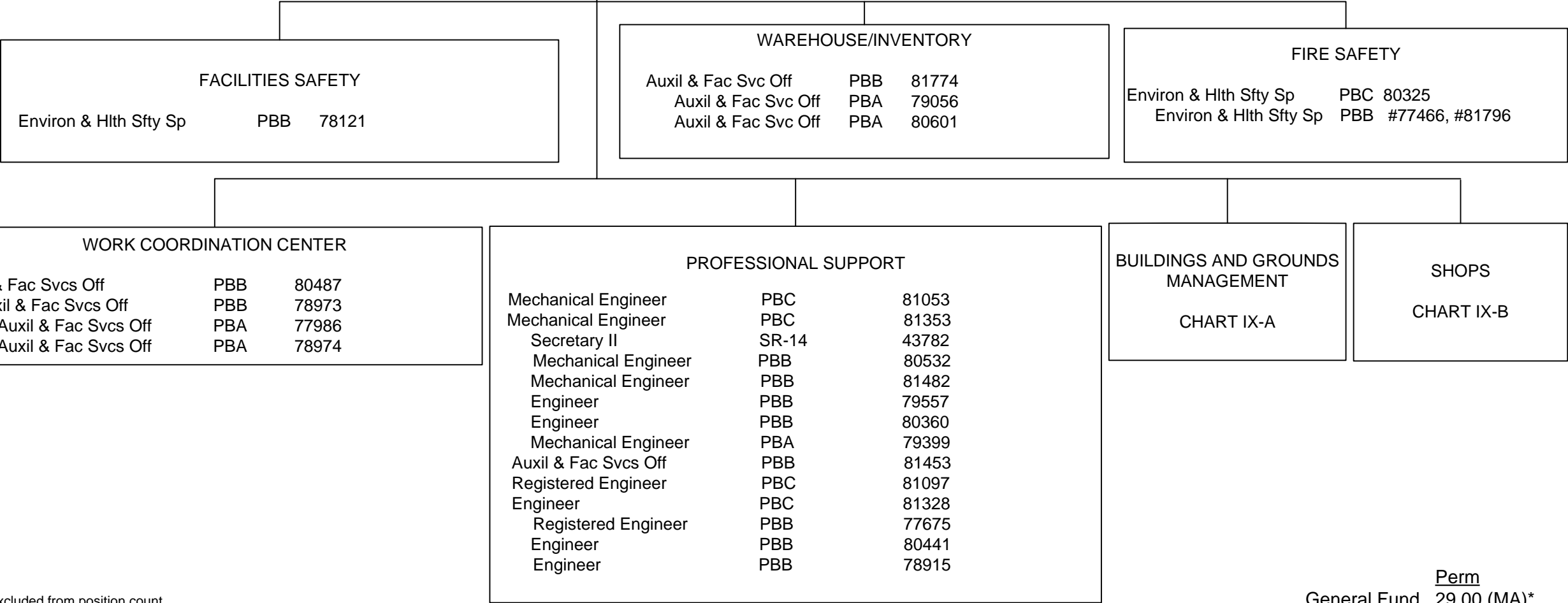
PBB

78777

81250

81505

80790

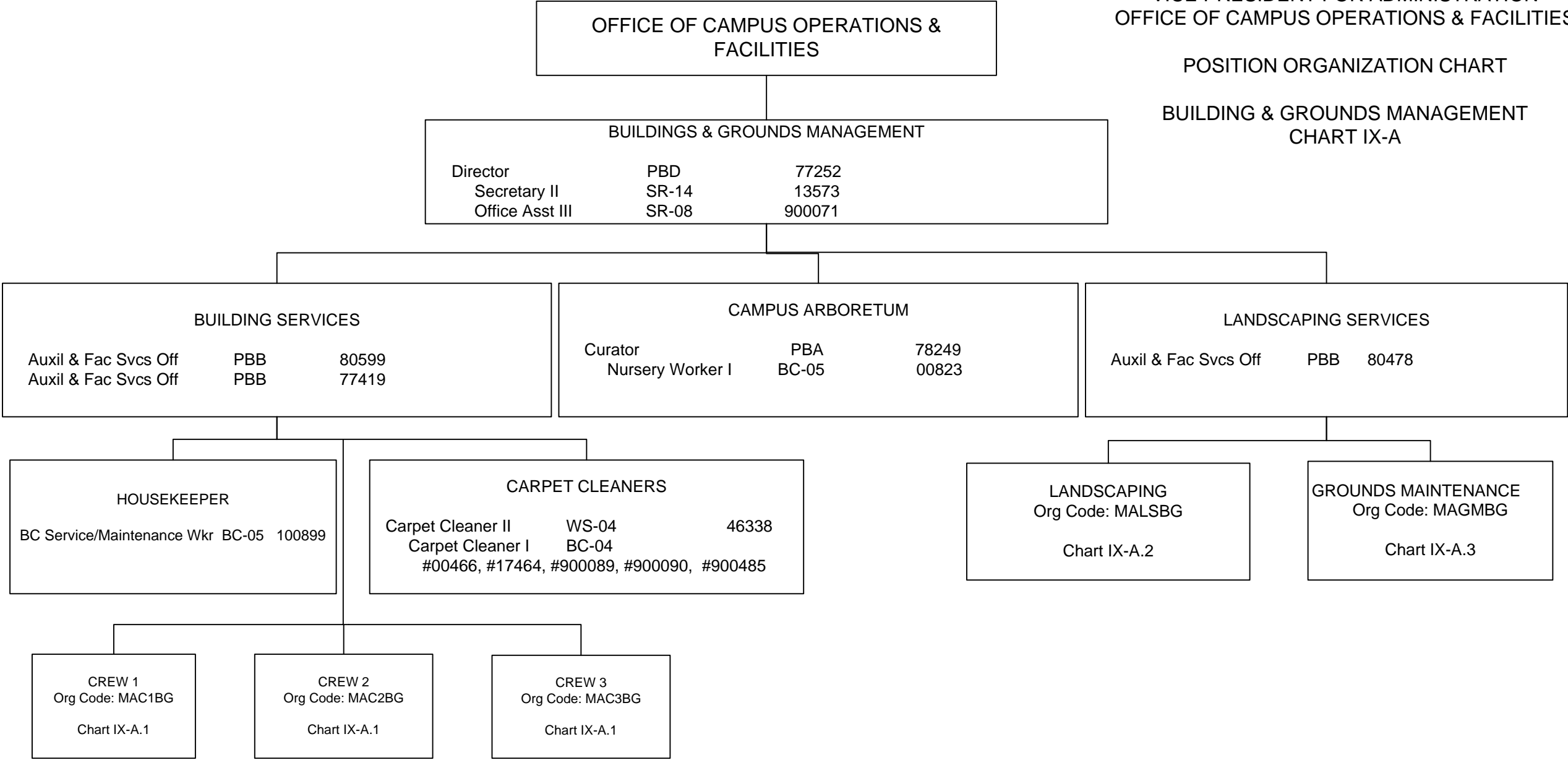


<sup>1</sup> Excluded from position count  
\* All positions on Chart IX appropriated to Manoa, reflected organizationally on this chart

STATE OF HAWAII  
UNIVERSITY OF HAWAII  
SYSTEMWIDE ADMINISTRATION  
VICE PRESIDENT FOR ADMINISTRATION  
OFFICE OF CAMPUS OPERATIONS & FACILITIES

POSITION ORGANIZATION CHART

BUILDING & GROUNDS MANAGEMENT  
CHART IX-A

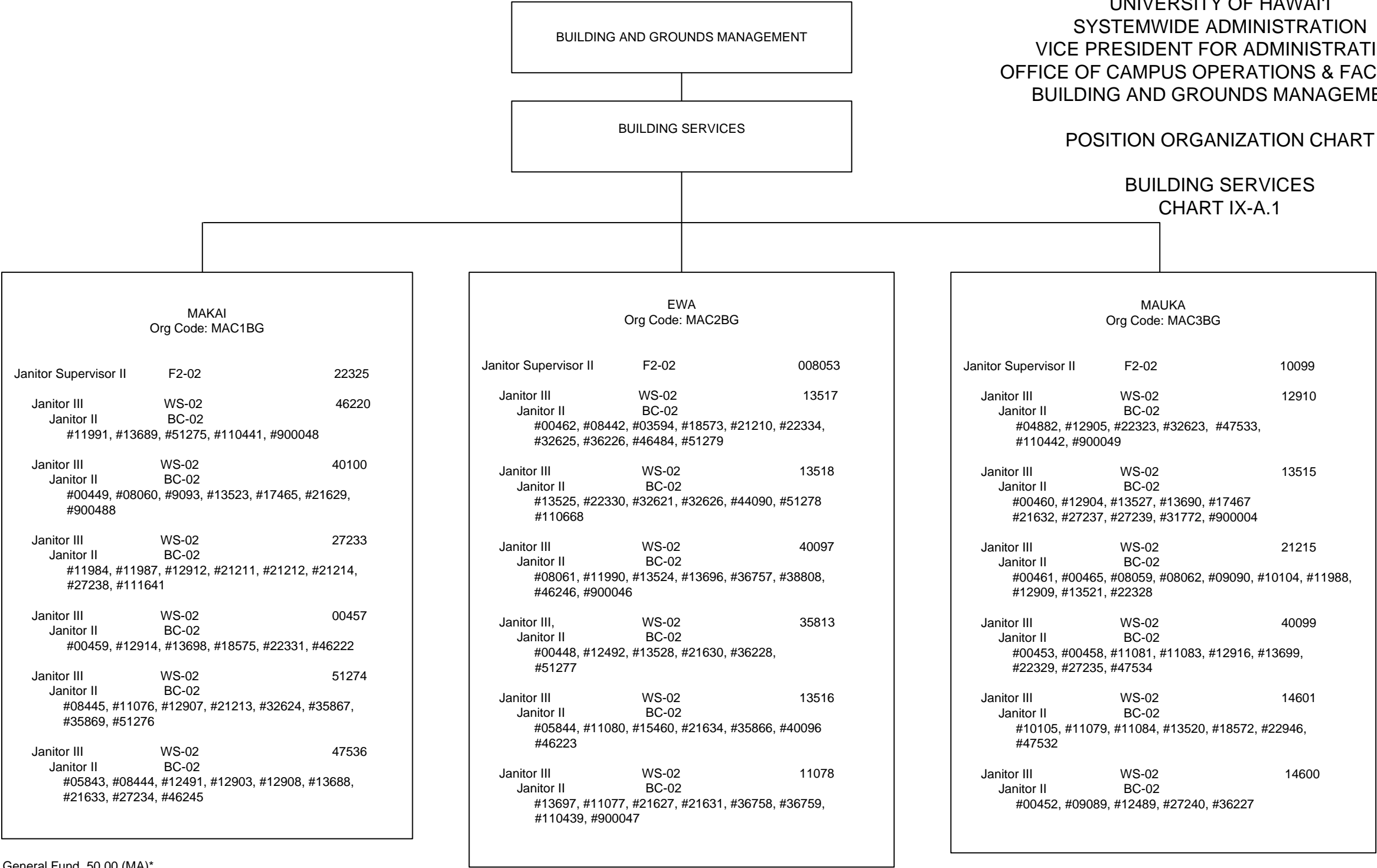


<sup>1</sup> Excluded from position count  
\* All positions on Chart IX-A appropriated to Manoa, reflected organizationally on this chart

STATE OF HAWAI'I  
UNIVERSITY OF HAWAI'I  
SYSTEMWIDE ADMINISTRATION  
VICE PRESIDENT FOR ADMINISTRATION  
OFFICE OF CAMPUS OPERATIONS & FACILITIES  
BUILDING AND GROUNDS MANAGEMENT

POSITION ORGANIZATION CHART

BUILDING SERVICES  
CHART IX-A.1



General Fund 50.00 (MA)\*

General Fund 53.00 (MA)\*

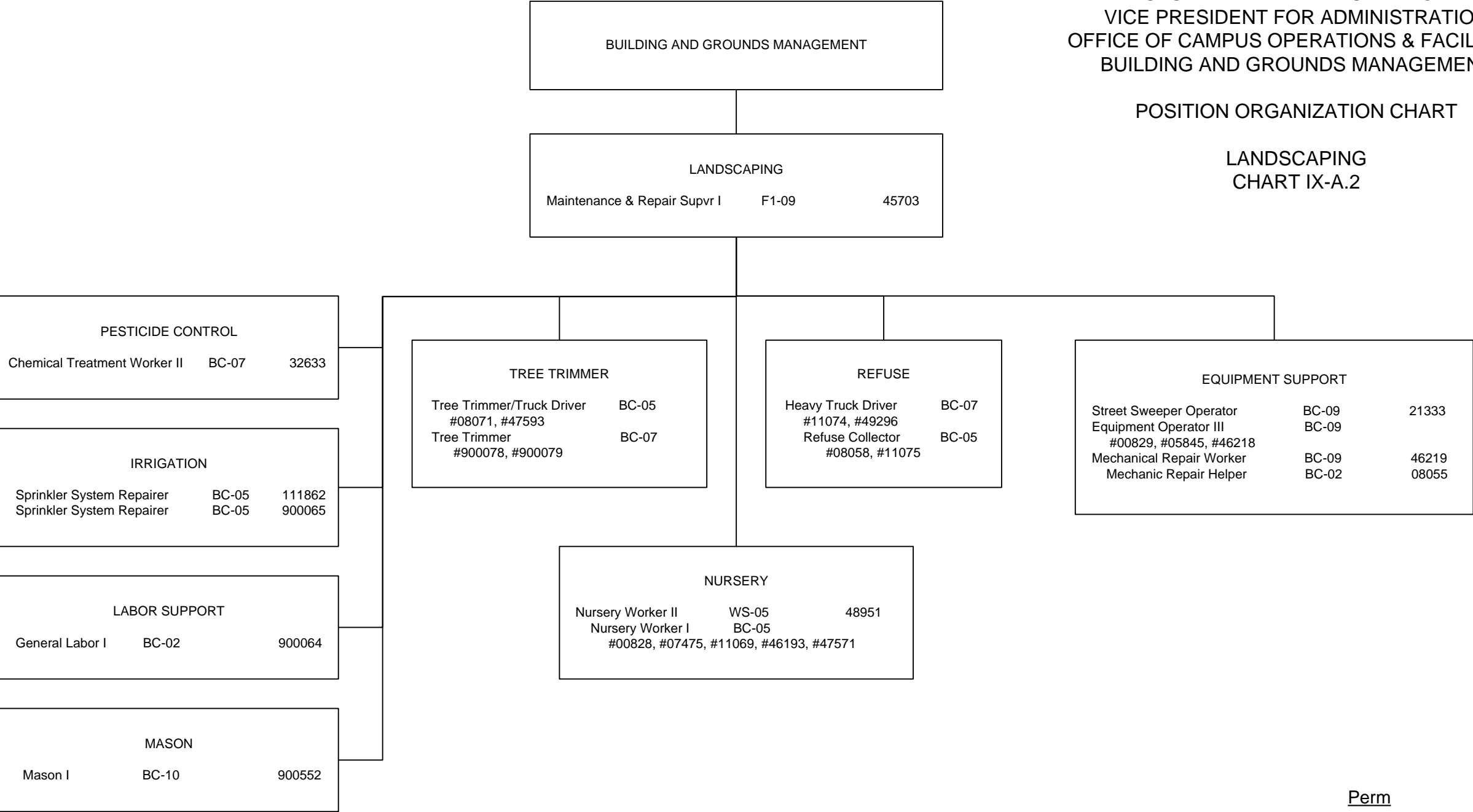
General Fund 55.00 (MA)\*

\* All positions on Chart IX-A.1 appropriated to Manoa, reflected organizationally on this chart

STATE OF HAWAI'I  
UNIVERSITY OF HAWAI'I  
SYSTEMWIDE ADMINISTRATION  
VICE PRESIDENT FOR ADMINISTRATION  
OFFICE OF CAMPUS OPERATIONS & FACILITIES  
BUILDING AND GROUNDS MANAGEMENT

POSITION ORGANIZATION CHART

LANDSCAPING  
CHART IX-A.2



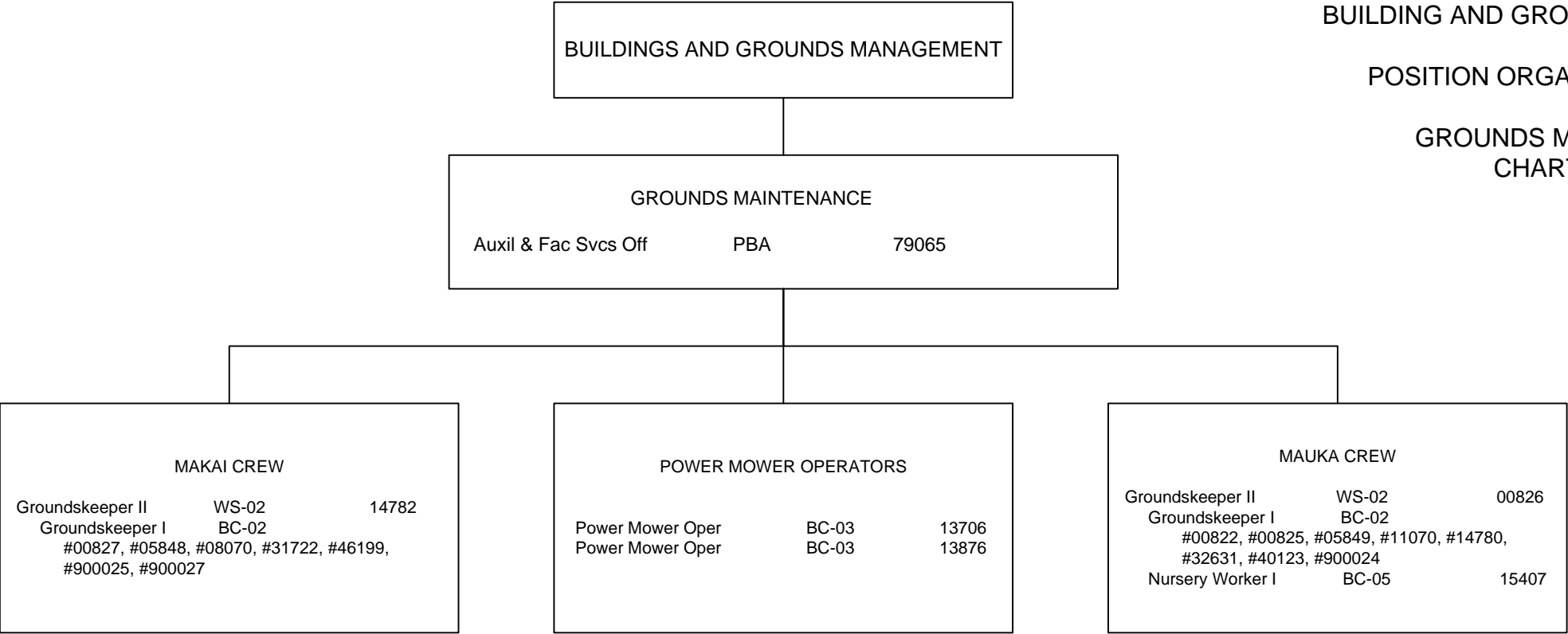
General Fund    Perm  
26.00 (MA)\*

\* All positions on Chart IX-A.2 appropriated to Manoa, reflected organizationally on this chart

STATE OF HAWAI'I  
UNIVERSITY OF HAWAI'I  
SYSTEMWIDE ADMINISTRATION  
VICE PRESIDENT FOR ADMINISTRATION  
OFFICE OF CAMPUS OPERATIONS & FACILITIES  
BUILDING AND GROUNDS MANAGEMENT

POSITION ORGANIZATION CHART

GROUNDS MAINTENANCE  
CHART IX-A.3

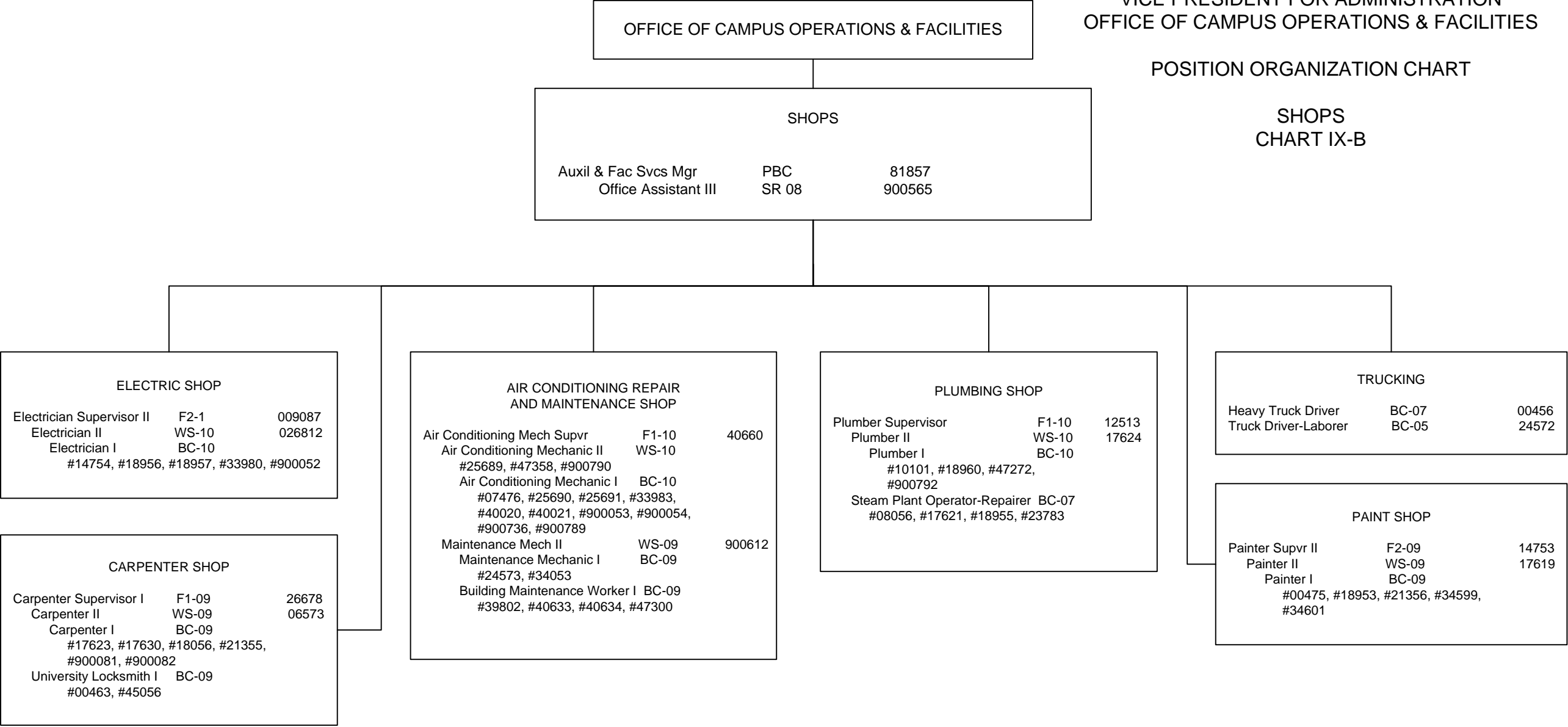


\* All positions on Chart IX-A.3 appropriated to Manoa, reflected organizationally on this chart

STATE OF HAWAI'I  
UNIVERSITY OF HAWAI'I  
SYSTEMWIDE ADMINISTRATION  
VICE PRESIDENT FOR ADMINISTRATION  
OFFICE OF CAMPUS OPERATIONS & FACILITIES

POSITION ORGANIZATION CHART

SHOPS  
CHART IX-B

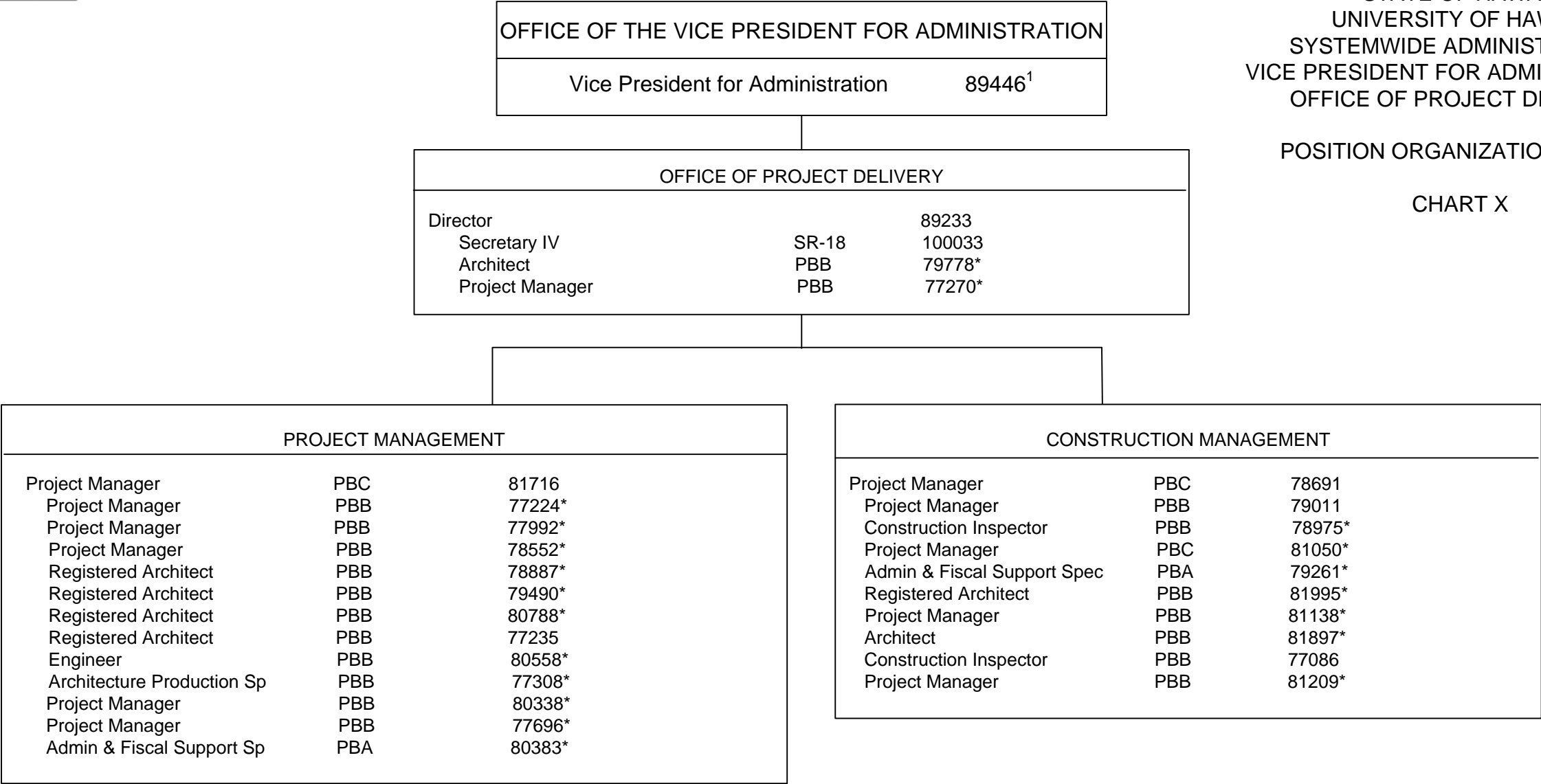


\* All positions on Chart IX-B appropriated to Manoa, reflected organizationally on this chart

STATE OF HAWAI'I  
UNIVERSITY OF HAWAI'I  
SYSTEMWIDE ADMINISTRATION  
VICE PRESIDENT FOR ADMINISTRATION  
OFFICE OF PROJECT DELIVERY

POSITION ORGANIZATION CHART

CHART X



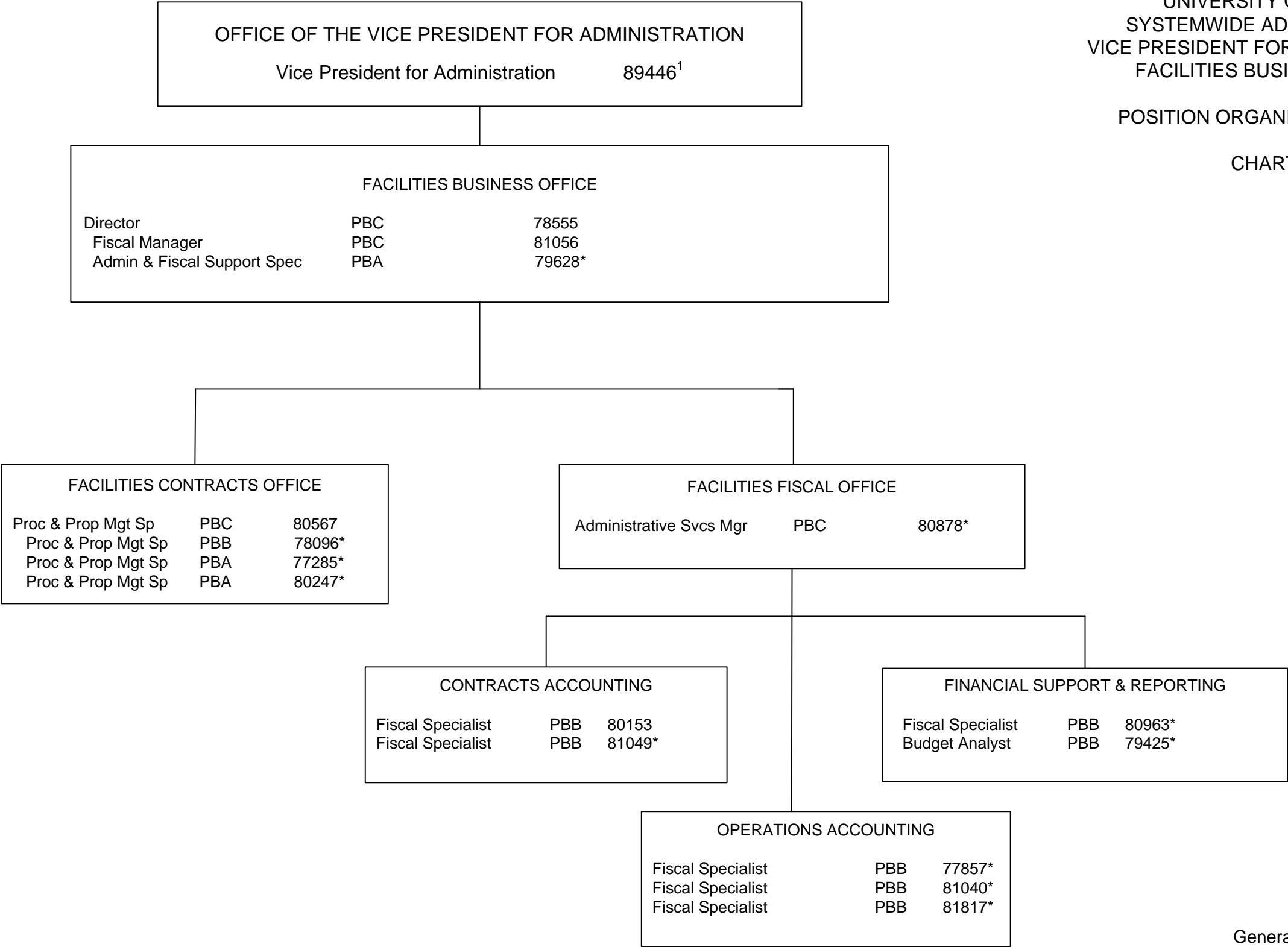
<sup>1</sup> Excluded from position count  
\* Positions appropriated to Manoa, reflected organizationally on this chart

Perm  
General Fund 7.00 (SW)  
General Fund 20.00 (MA)\*

STATE OF HAWAI'I  
UNIVERSITY OF HAWAI'I  
SYSTEMWIDE ADMINISTRATION  
VICE PRESIDENT FOR ADMINISTRATION  
FACILITIES BUSINESS OFFICE

POSITION ORGANIZATION CHART

CHART XI



<sup>1</sup> Excluded from position count  
\* Positions appropriated to Manoa, reflected organizationally on this chart

Perm  
General Fund 4.00 (SW)  
General Fund 11.00 (MA)\*