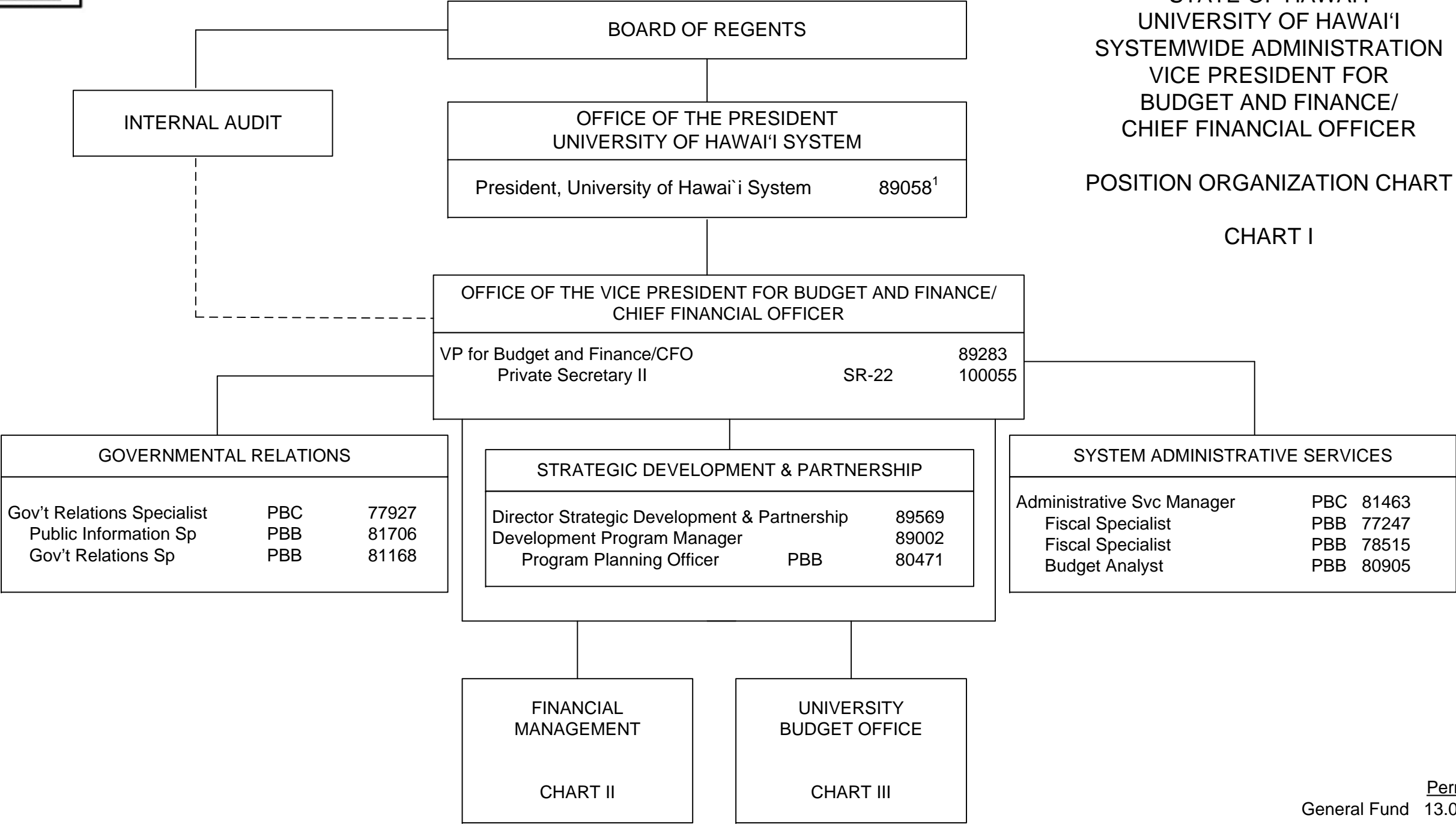


STATE OF HAWAI'I
UNIVERSITY OF HAWAI'I
SYSTEMWIDE ADMINISTRATION
VICE PRESIDENT FOR
BUDGET AND FINANCE/
CHIEF FINANCIAL OFFICER

POSITION ORGANIZATION CHART

CHART I

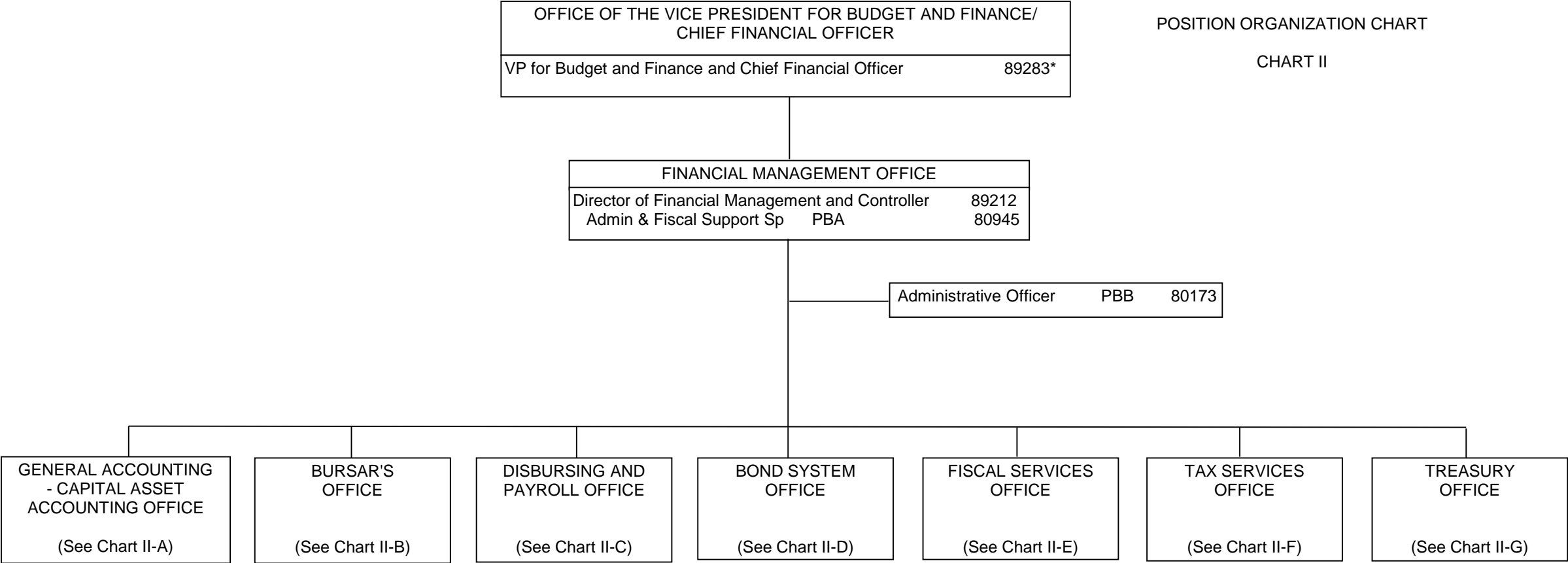


¹ Excluded from position count
² Position established, pending reorganization: 1 General Fund position: 10867, Secretary IV
2019orgchrtupdate cfo

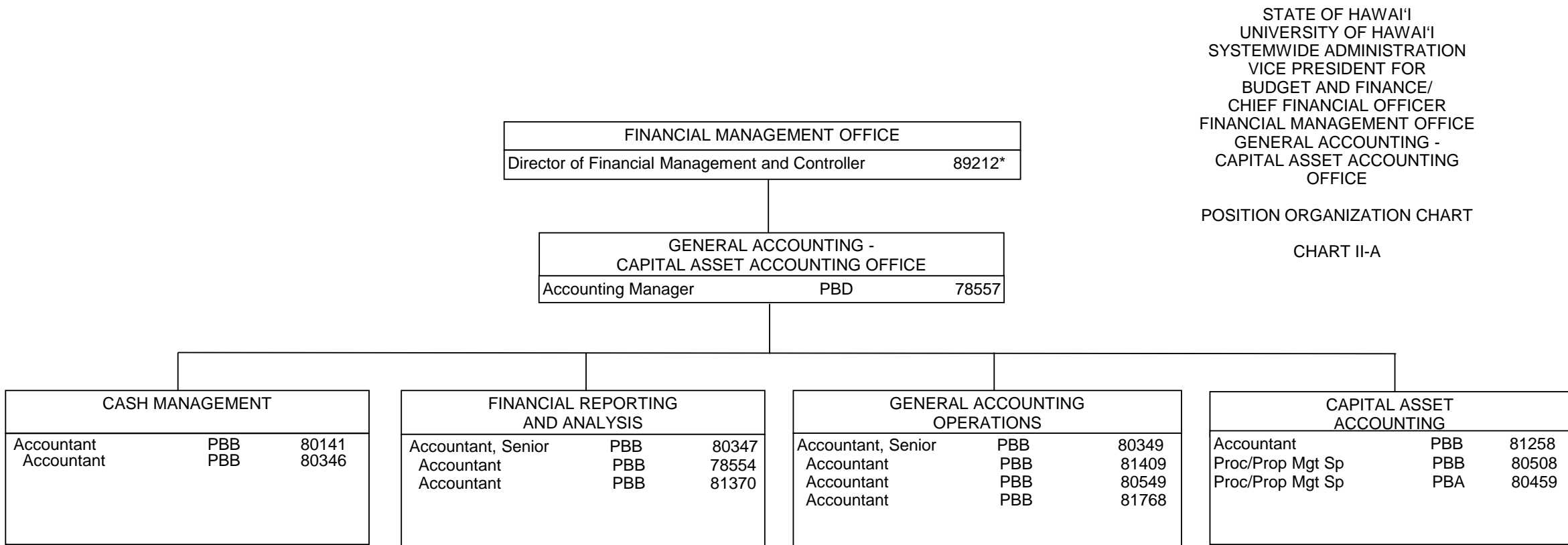
STATE OF HAWAI'I
UNIVERSITY OF HAWAI'I
SYSTEMWIDE ADMINISTRATION
VICE PRESIDENT FOR
BUDGET AND FINANCE/
CHIEF FINANCIAL OFFICER
FINANCIAL MANAGEMENT OFFICE

POSITION ORGANIZATION CHART

CHART II



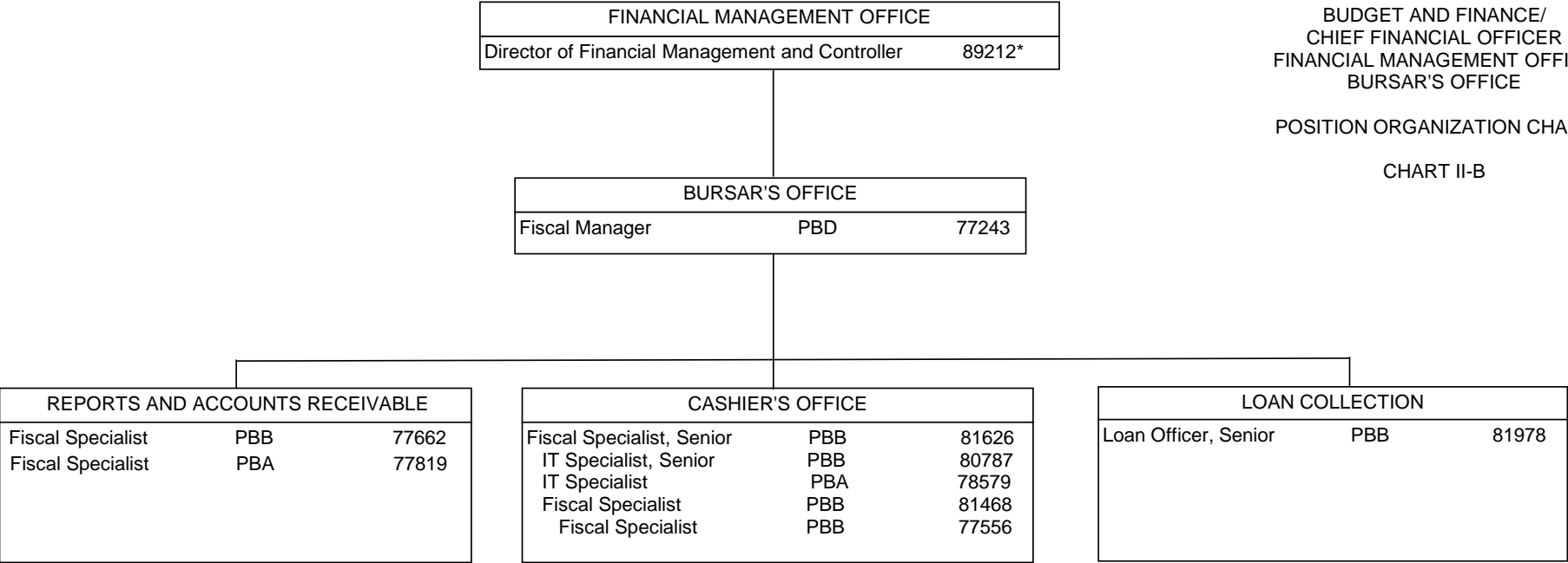
* Excluded from position count, this page



STATE OF HAWAI'I
UNIVERSITY OF HAWAI'I
SYSTEMWIDE ADMINISTRATION
VICE PRESIDENT FOR
BUDGET AND FINANCE/
CHIEF FINANCIAL OFFICER
FINANCIAL MANAGEMENT OFFICE
BURSAR'S OFFICE

POSITION ORGANIZATION CHART

CHART II-B



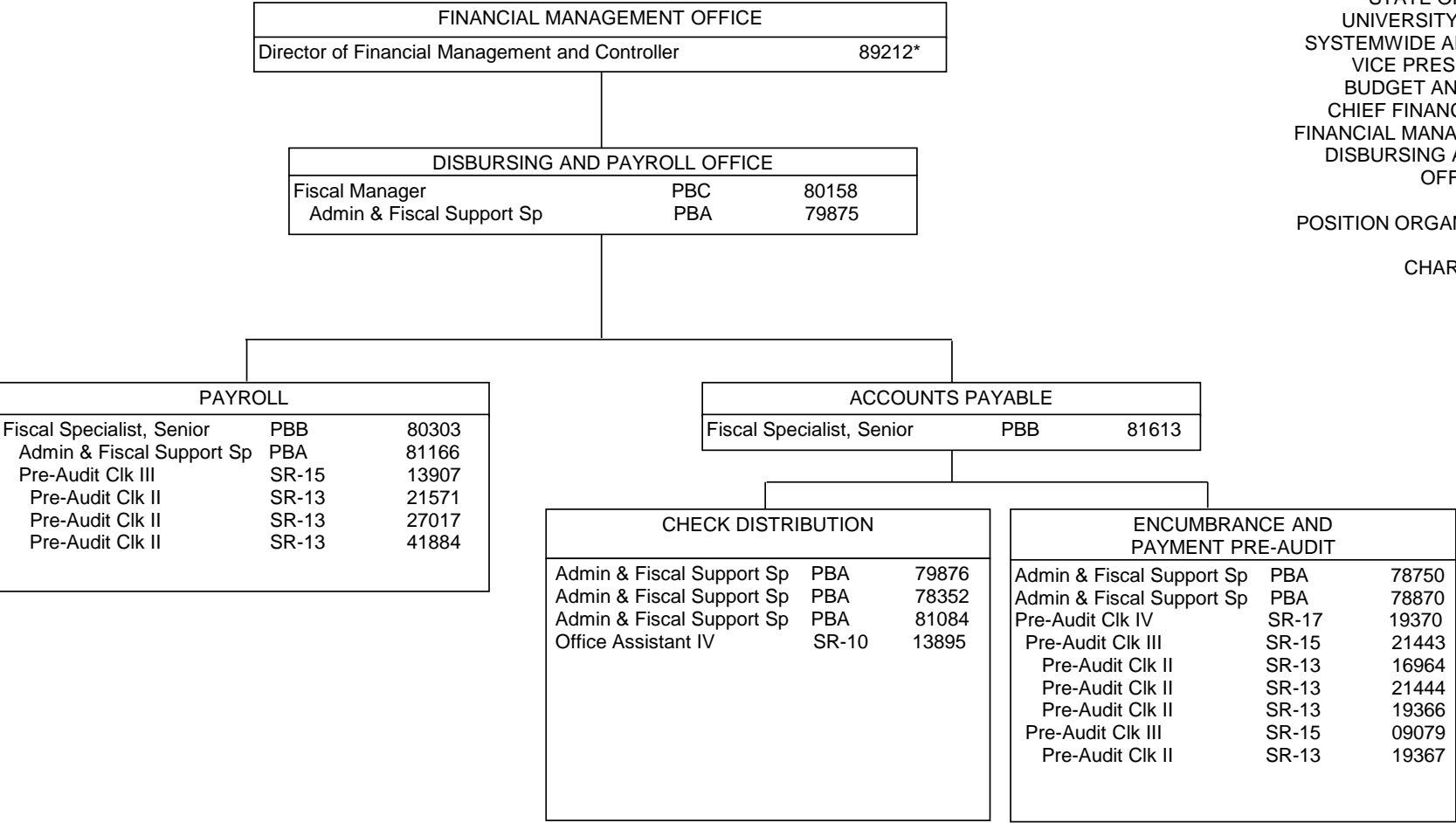
* Excluded from position count, this page

¹ Position no. 77107 established from abolished position no. 41986;
in recruitment to replace Fiscal Manager position

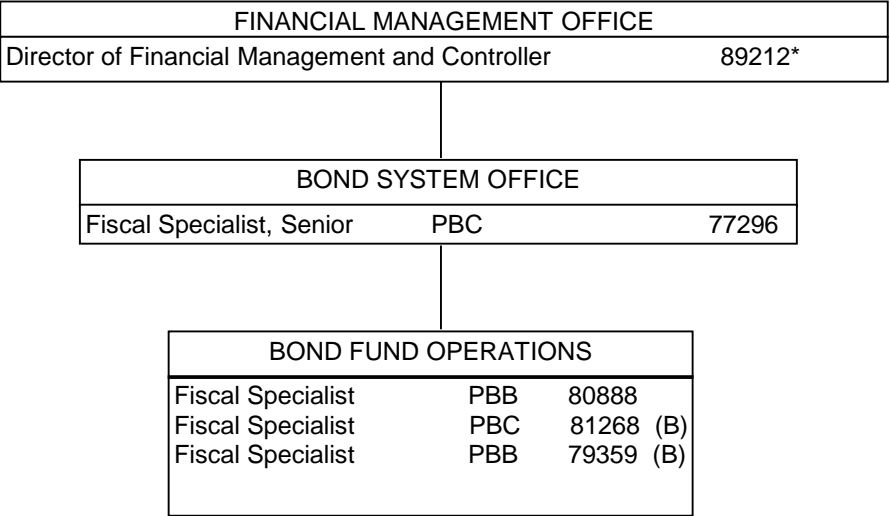
STATE OF HAWAII
UNIVERSITY OF HAWAII
SYSTEMWIDE ADMINISTRATION
VICE PRESIDENT FOR
BUDGET AND FINANCE/
CHIEF FINANCIAL OFFICER
FINANCIAL MANAGEMENT OFFICE
DISBURSING AND PAYROLL
OFFICE

POSITION ORGANIZATION CHART

CHART II-C



* Excluded from position count, this page



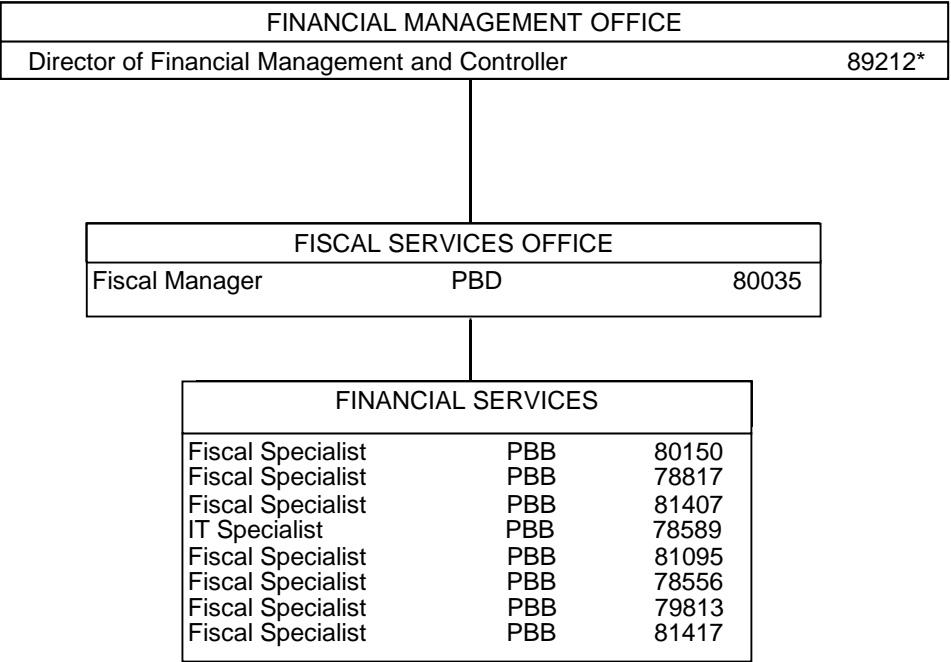
STATE OF HAWAI'I
UNIVERSITY OF HAWAI'I
SYSTEMWIDE ADMINISTRATION
VICE PRESIDENT FOR
BUDGET AND FINANCE/
CHIEF FINANCIAL OFFICER
FINANCIAL MANAGEMENT OFFICE
BOND SYSTEM OFFICE

POSITION ORGANIZATION CHART

CHART II-D

		<u>Perm</u>
General Funds	2.00	
(B) Special Funds	2.00	

* Excluded from position count, this page



STATE OF HAWAI'I
UNIVERSITY OF HAWAI'I
SYSTEMWIDE ADMINISTRATION
VICE PRESIDENT FOR
BUDGET AND FINANCE/
CHIEF FINANCIAL OFFICER
FINANCIAL MANAGEMENT OFFICE
FISCAL SERVICES OFFICE

POSITION ORGANIZATION CHART

CHART II-E

* Excluded from position count, this page

FINANCIAL MANAGEMENT OFFICE		
Director of Financial Management and Controller		89212*

TAX SERVICES OFFICE		
Fiscal Specialist, Senior	PBC	81532

STATE OF HAWAI'I
UNIVERSITY OF HAWAI'I
SYSTEMWIDE ADMINISTRATION
VICE PRESIDENT FOR
BUDGET AND FINANCE/
CHIEF FINANCIAL OFFICER
FINANCIAL MANAGEMENT OFFICE
TAX SERVICES OFFICE

POSITION ORGANIZATION CHART

CHART II-F

* Excluded from position count, this page

FINANCIAL MANAGEMENT OFFICE		
Director of Financial Management and Controller		89212*

TREASURY OFFICE		
Fiscal Specialist, Senior	PBC	80432

TREASURY OPERATIONS		
Fiscal Specialist	PBB	77138
Account Clerk III	SR-11	18022
Account Clerk III	SR-11	07464

STATE OF HAWAI'I
UNIVERSITY OF HAWAI'I
SYSTEMWIDE ADMINISTRATION
VICE PRESIDENT FOR
BUDGET AND FINANCE/
CHIEF FINANCIAL OFFICER
FINANCIAL MANAGEMENT OFFICE
TREASURY OFFICE

POSITION ORGANIZATION CHART

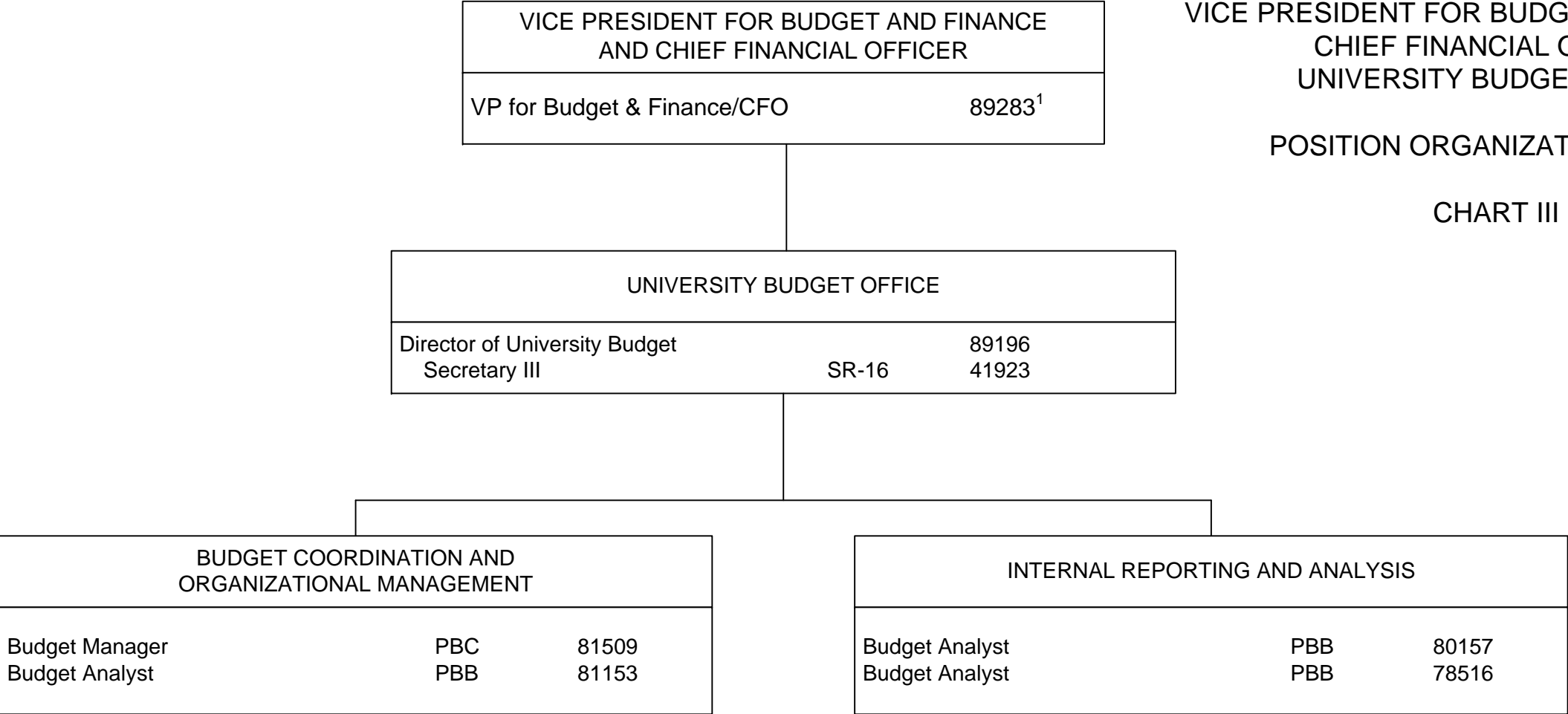
CHART II-G

* Excluded from position count, this page

STATE OF HAWAI‘I
UNIVERSITY OF HAWAI‘I
SYSTEMWIDE ADMINISTRATION
VICE PRESIDENT FOR BUDGET AND FINANCE/
CHIEF FINANCIAL OFFICER
UNIVERSITY BUDGET OFFICE

POSITION ORGANIZATION CHART

CHART III



¹ Excluded from position count