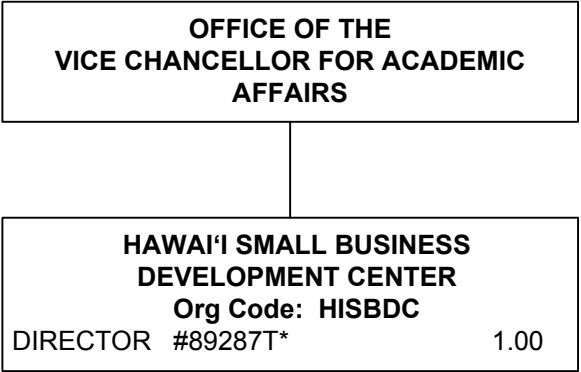
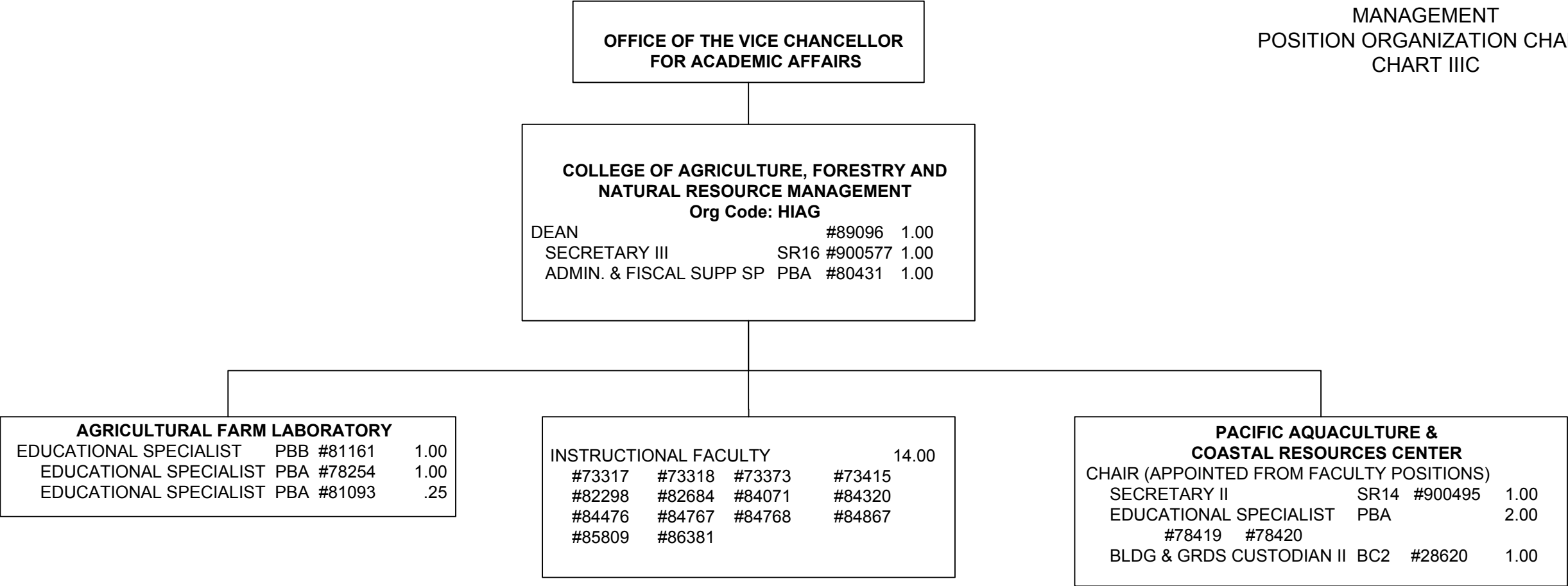


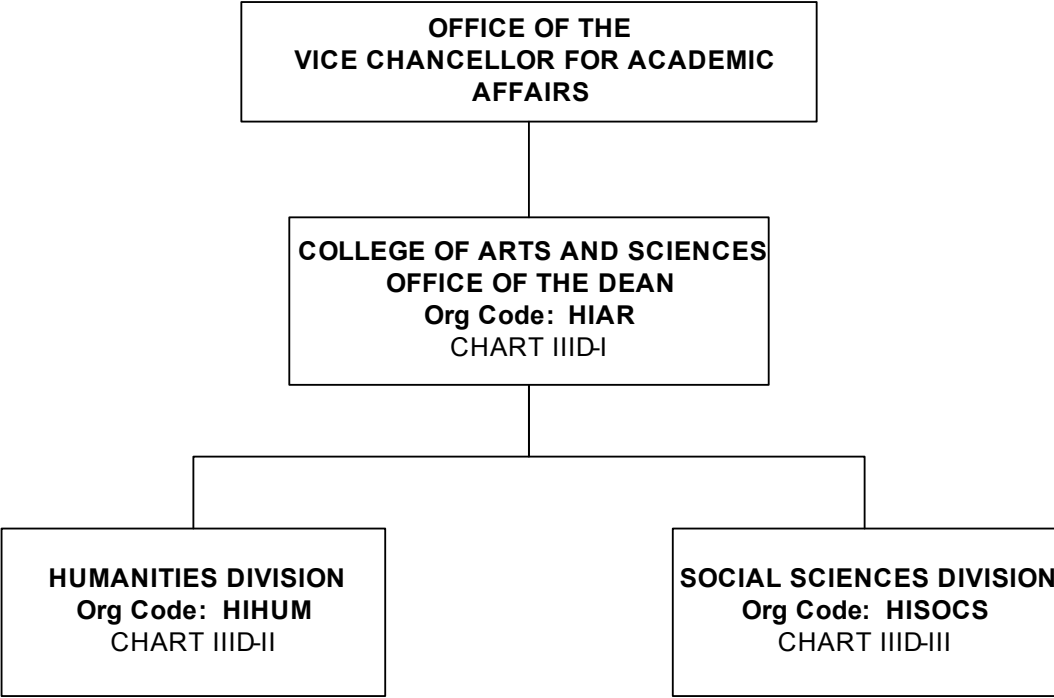
**CHART UPDATED**  
**DATE: July 1, 2019**

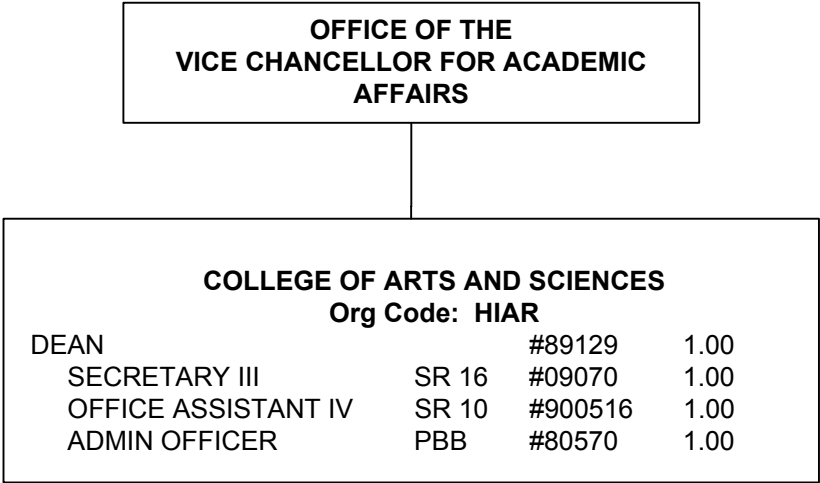
STATE OF HAWAI'I  
UNIVERSITY OF HAWAI'I  
UNIVERSITY OF HAWAI'I AT HILO  
ACADEMIC AFFAIRS  
HAWAI'I SMALL BUSINESS  
DEVELOPMENT CENTER  
POSITION ORGANIZATION CHART  
CHART IIIB



\*General Funds FTE – 1.00 (Auth. Temp.)







COLLEGE OF ARTS AND SCIENCES  
OFFICE OF THE DEAN

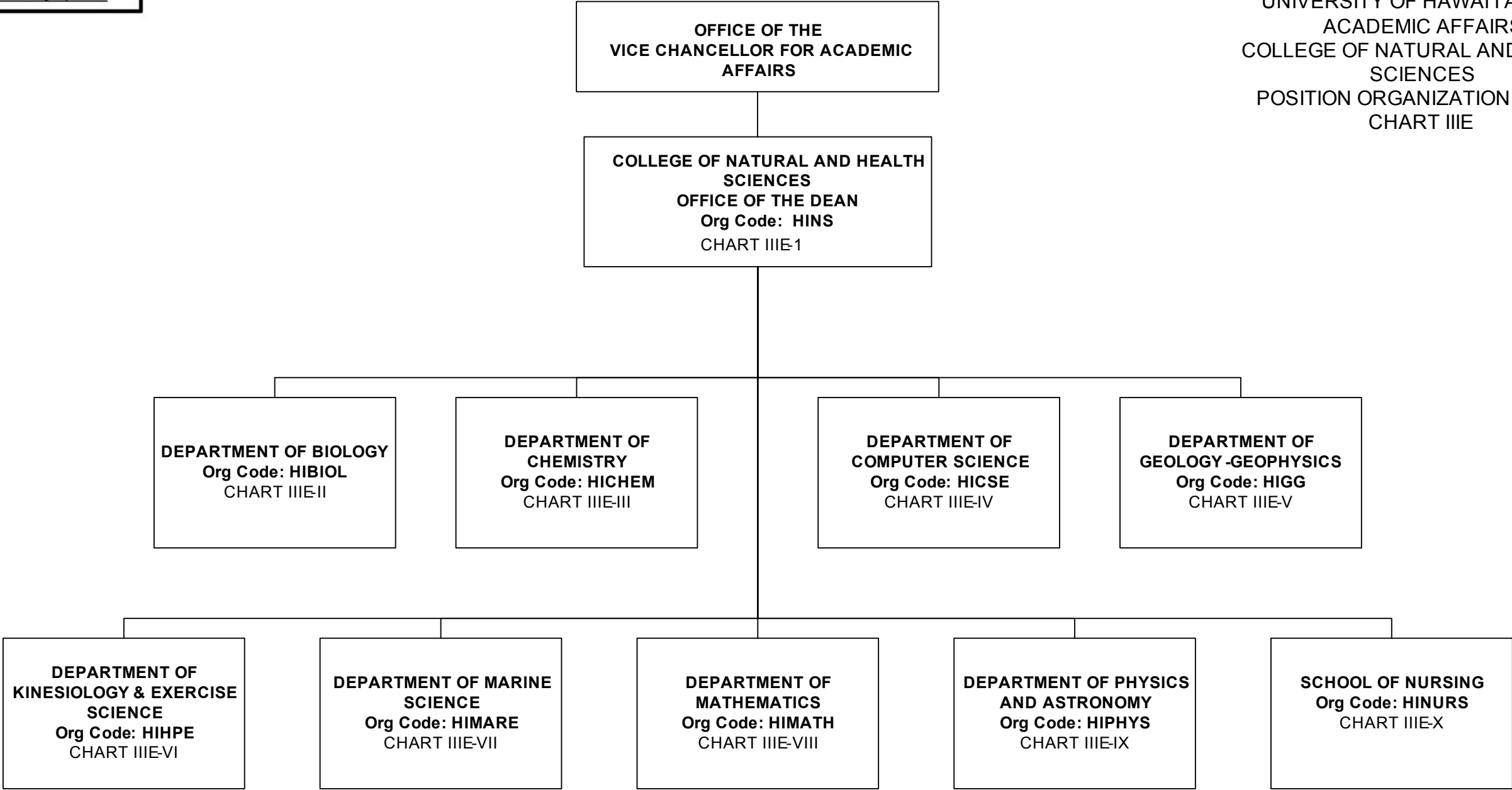
HUMANITIES DIVISION					
Org Code: HIHUM					
CHAIR (APPOINTED FROM FACULTY POSITIONS)					
SECRETARY II	SR14	#21531			1.00
OFFICE ASSISTANT III	SR8	#28618			1.00
ART Org Code: HIART					
FACULTY:	#82001	#82312	#82562	#84604	4.00
ASIAN PACIFIC LANGUAGES Org Code: HIAPL					
FACULTY:	#73407	#82832	#83971	#84038 #86365	5.00
COMMUNICATION Org Code: HICOM					
FACULTY:	#73256	#73343(S)	#82764	#82900 #83107 #83158	9.00
	#83655	#83784	#86411		
ENGLISH Org Code: HIENG					
FACULTY:	#73344(S)	#82171	#82553	#82563 #82833 #83928	8.00
	#84267	#86540			
EUROPEAN LANGUAGES FACULTY Org code: HIEL					
FACULTY:	#73346				1.00
PERFORMING ARTS Org Code: HIMUS					
FACULTY:	#82775	#84213	#84511		3.00
PHILOSOPHY Org Code: HIPHIL					
FACULTY:	#73368(S)	#82478	#82654	#84509	4.00

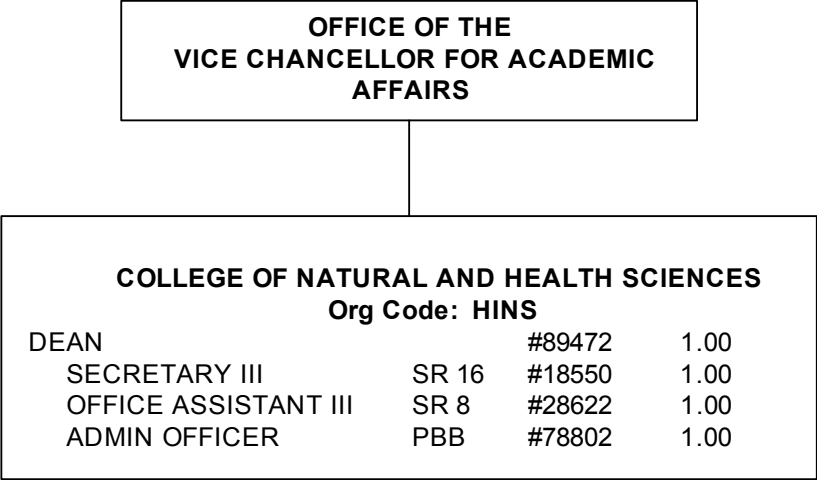
COLLEGE OF ARTS AND SCIENCES  
OFFICE OF THE DEAN

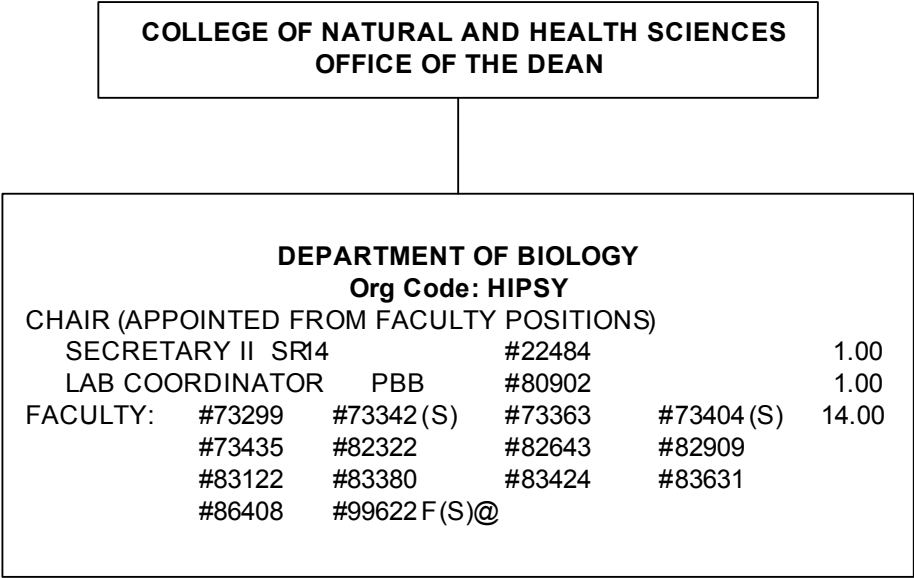
SOCIAL SCIENCES DIVISION						
Org Code: HISOCS						
CHAIR (APPOINTED FROM FACULTY POSITIONS)						
SECRETARY II	SR14	#26666				1.00
OFFICE ASSISTANT III	SR8	#28623				1.00
ANTHROPOLOGY	Org Code: HIANTH					
FACULTY: #73345(S)	#73372	#82214	#82557	#83005	#83481	8.00
	#86488	#99616F(S)@				
SCHOOL OF EDUCATION	Org Code: HIED					
OFFICE ASSISTANT IV	SR10	#42269+				1.00
FACULTY: #73301	#73464	#82179	#83049	#83596	#83791	8.00
	#86541					
GEOGRAPHY	Org Code: HIGEOG					
FACULTY: #82899	#83555	#84766	#86404	#86414		5.00
HISTORY	Org Code: HIHIST					
FACULTY: #82009	#84198	#84285	#84483	#86360		5.00
POLITICAL SCIENCE	Org Code: HIPOLS					
FACULTY: #73356(S)	#82309	#82352	#82821	#83186	#86445	7.00
	#86450					
PSYCHOLOGY	Org Code: HIPSY					
FACULTY: #73254	#73362	#82349	#82542	#82847	#82933	11.00
	#83929	#83981	#86362	#86413	#86417	
SOCIOLOGY	Org Code: HISOC					
FACULTY: #73298	#73352	#82169	#82303	#84593	#86370	6.00

@ Pending Establishment  
+ Reports to Department Chair

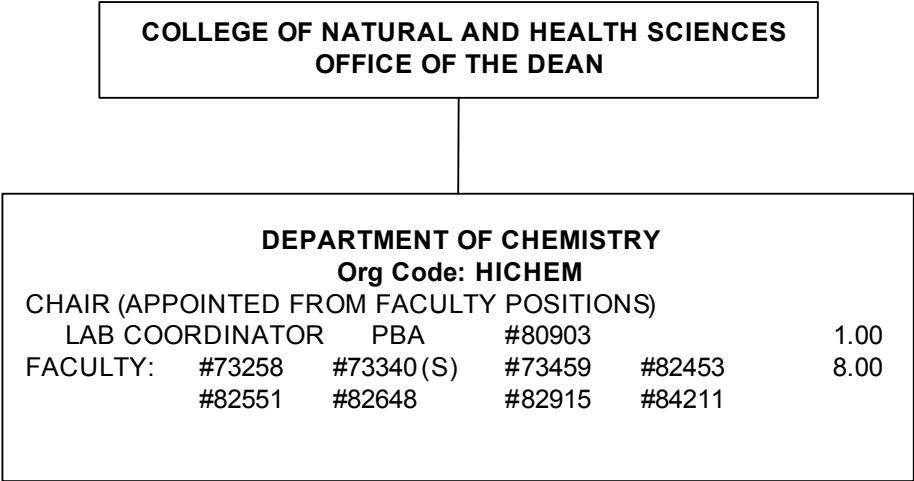


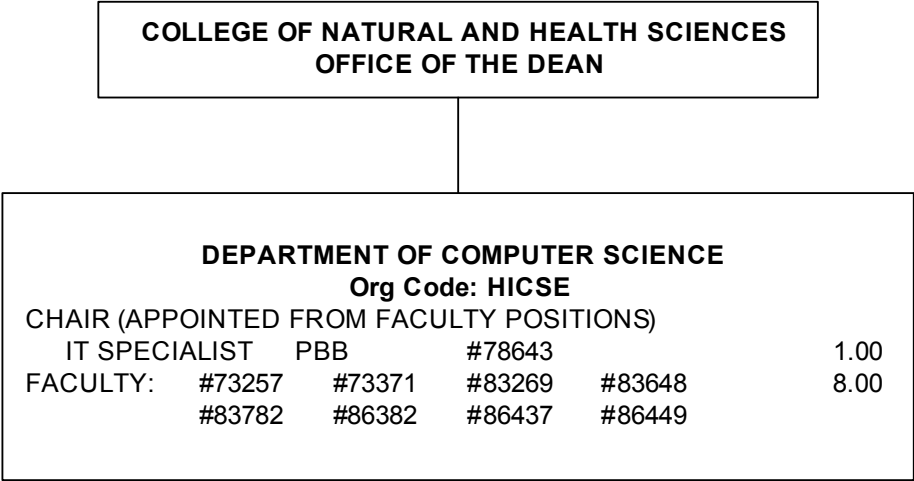


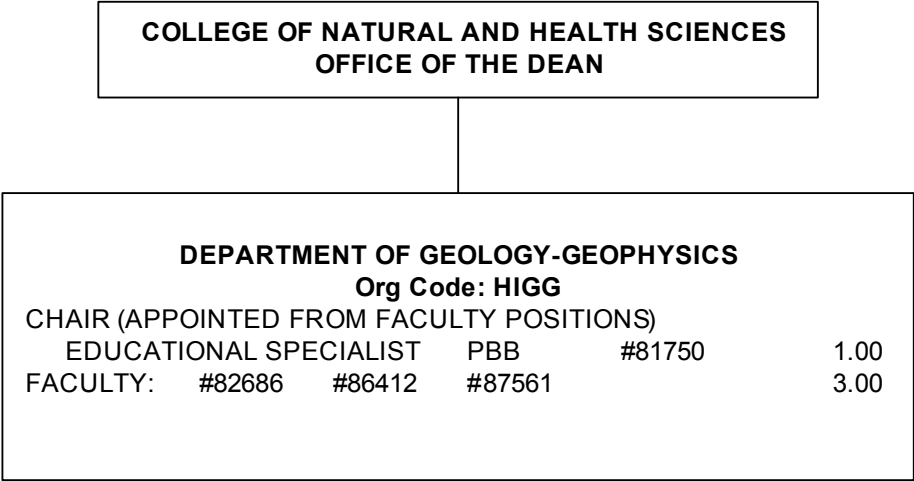


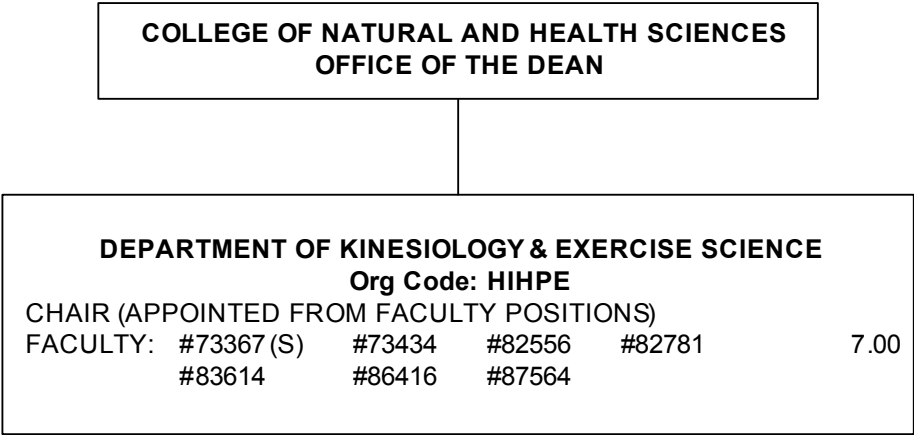


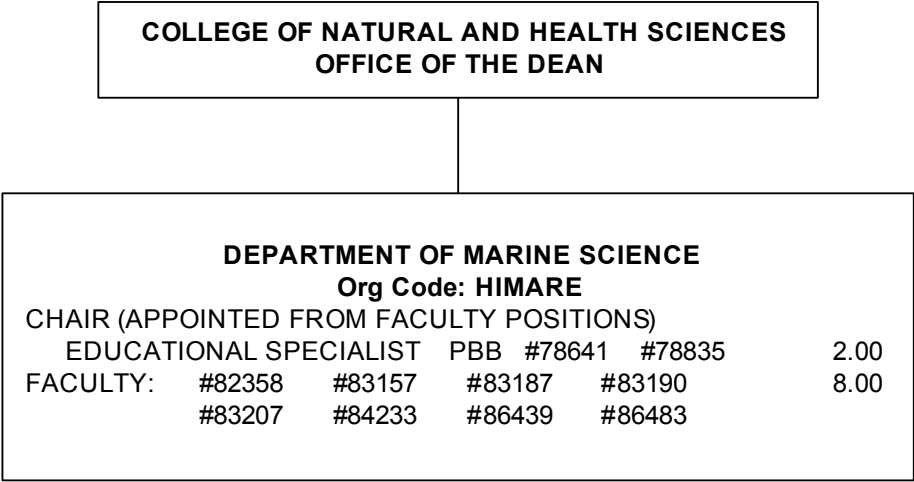
@ Pending Establishment







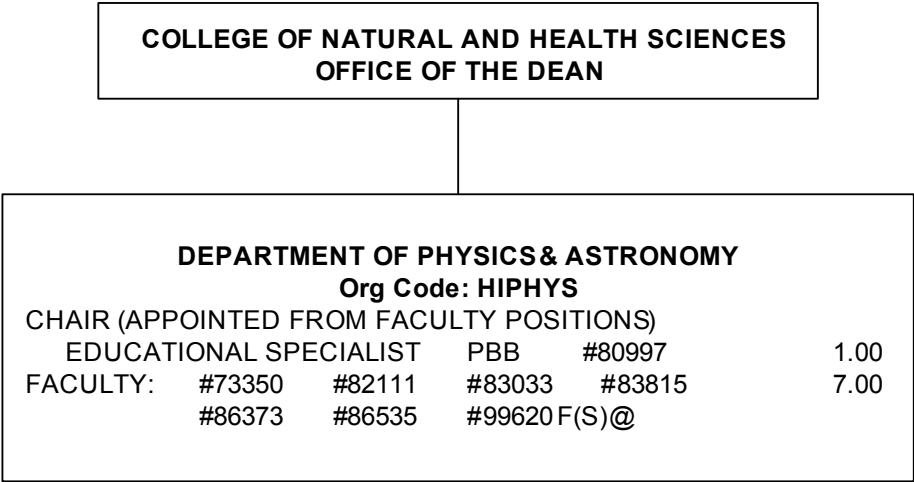




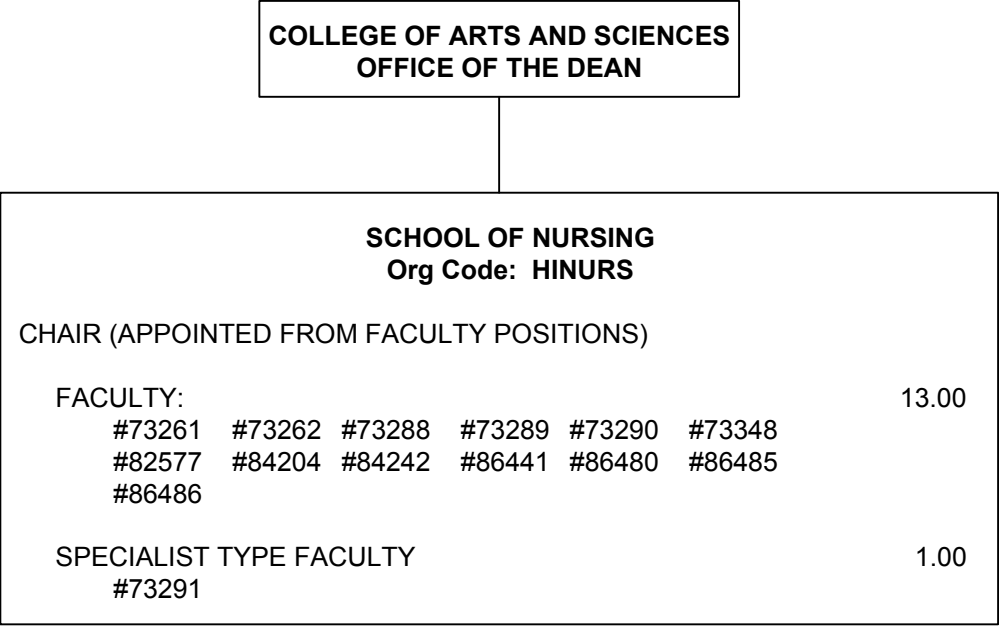


COLLEGE OF NATURAL AND HEALTH SCIENCES  
OFFICE OF THE DEAN

DEPARTMENT OF MATHEMATICS					
Org Code: HIMATH					
CHAIR (APPOINTED FROM FACULTY POSITIONS)					
FACULTY:	#73255	#73341 (S)	#73461	#73462	12.00
	#82381	#82801	#83503	#84063	
	#84068	#86361	#86366	#86482	



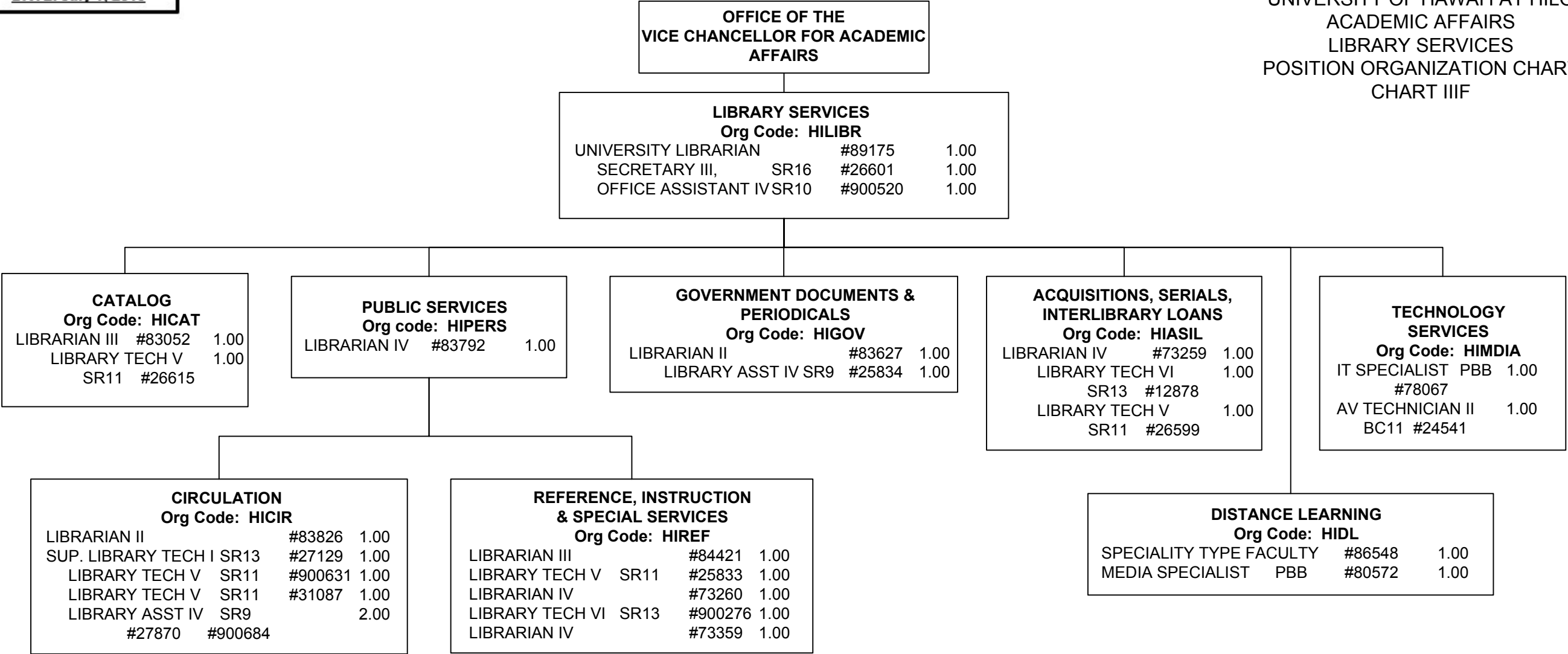
@ Pending Establishment

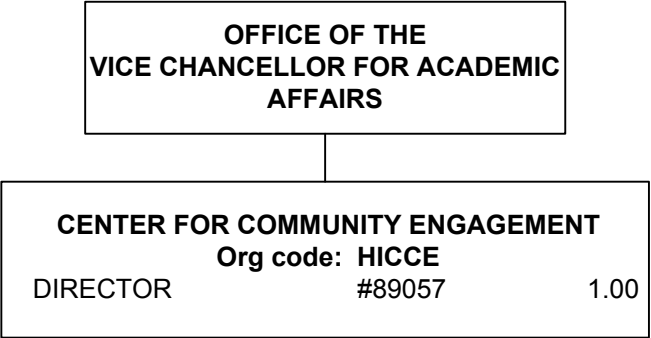


Footnote:

SPECIALIST TYPE FACULTY #86409 .50

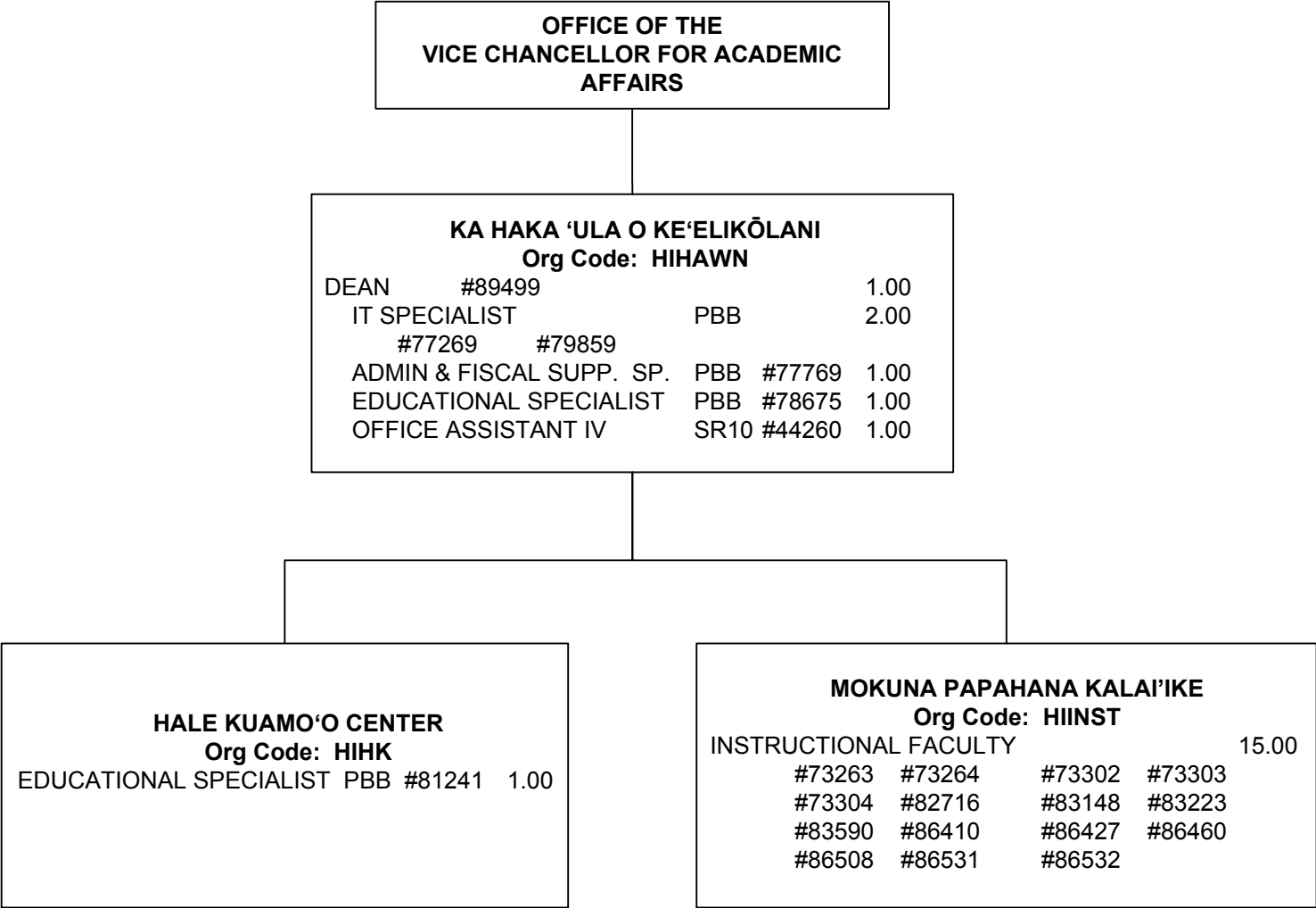
(For count purposes only)

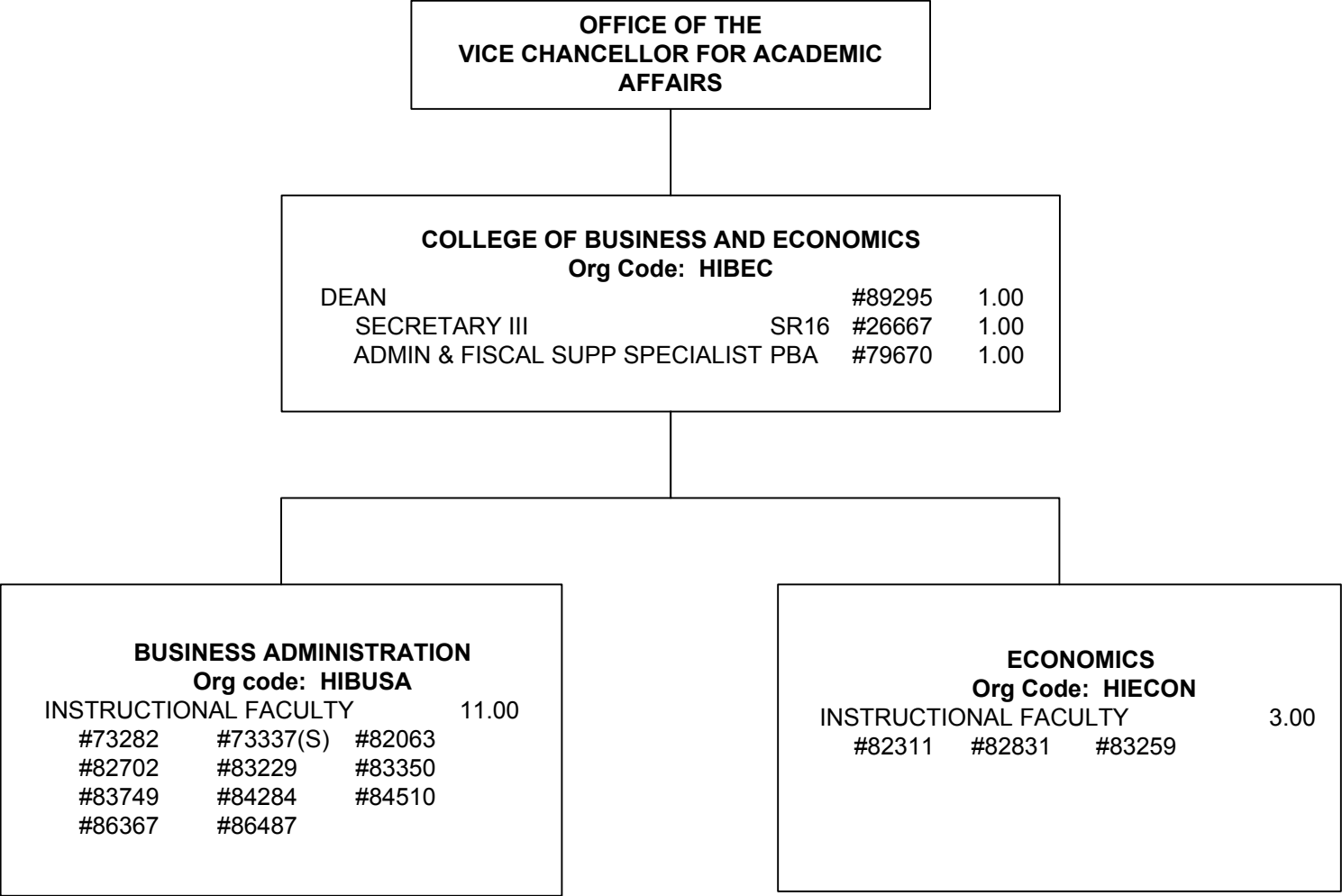




Footnote:

EDUCATIONAL SPECIALIST PBB	#80501(S)	1.00
EDUCATIONAL SPECIALIST PBB	#78668(S)	1.00
SECRETARY II SR14	#25886(S)	1.00
(For count purposes only)		
CLERK STENO II SR9	#32509(S)	1.00
SPECIALIST TYPE FACULTY	#86473(S)	1.00
ACCOUNT CLERK III SR11	#900503(S)	1.00

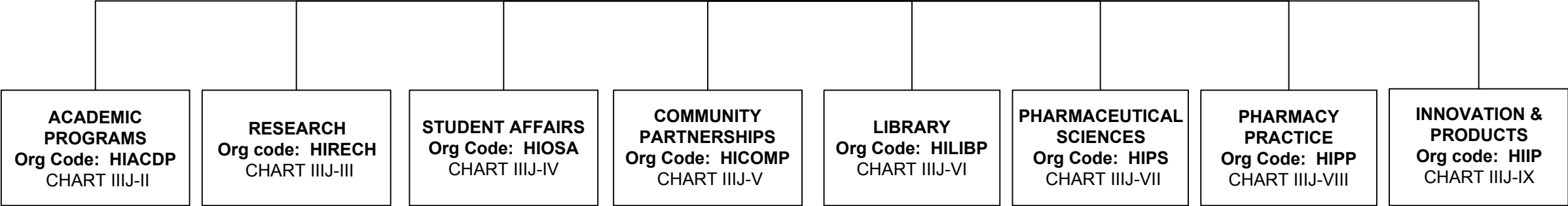




Footnote:  
OFFICE ASSISTANT III SR8 #45475 1.00  
(For count purposes only)

OFFICE OF THE VICE CHANCELLOR  
FOR ACADEMIC AFFAIRS

COLLEGE OF PHARMACY  
OFFICE OF THE DEAN  
Org Code: HIPHAR  
CHART IIIJ-I



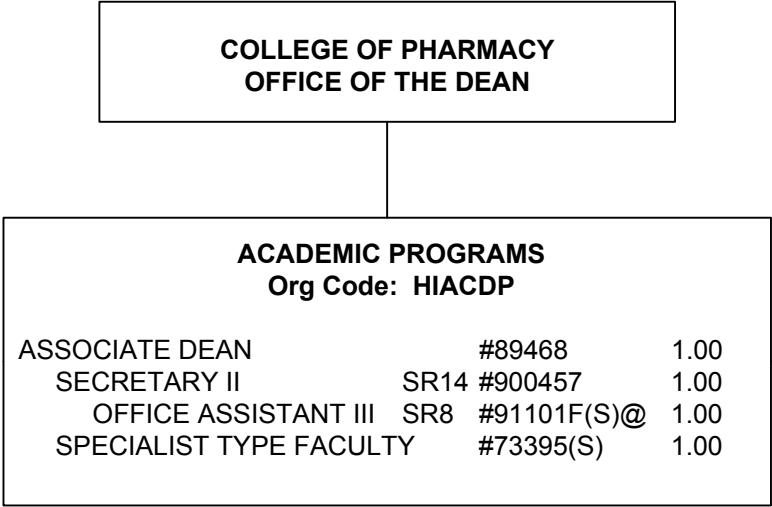


OFFICE OF THE VICE CHANCELLOR FOR  
ACADEMIC AFFAIRS

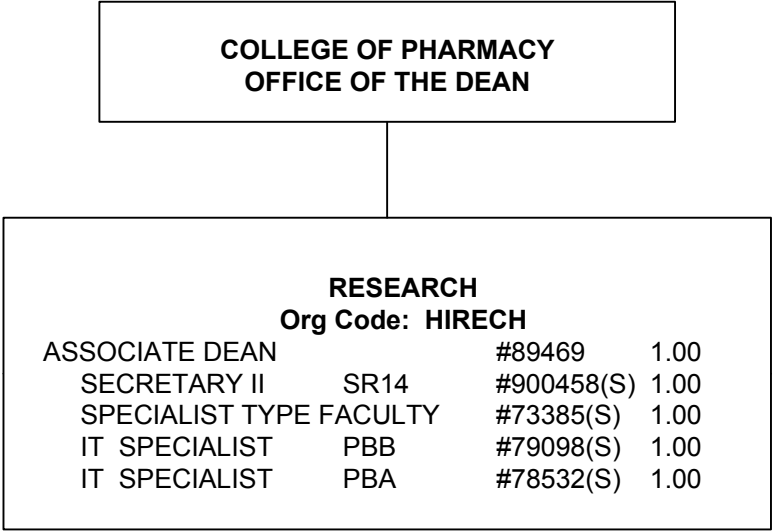
COLLEGE OF PHARMACY				
Org Code: HIPHAR				
DEAN		#89428		1.00
SECRETARY III	SR16	#900293		1.00
OFFICE ASSISTANT III	SR8	#900634(S)		1.00
HUMAN RESOURCES SP	PBB	#79785(S)		1.00
BUDGET MANAGER	PBB	#78533(S)		1.00
ADMIN & FISCAL SUPP SP	PBA			2.00
	#77608(S)	#79128(S)		
IT SPECIALIST	PBA	#79234(S)		1.00
IT SPECIALIST	PBB	#91612F(S)@		1.00
SPECIALIST TYPE FACULTY				2.00
	#73357(S)	#73427		

@ Pending Establishment

Footnote:  
OFFICE ASSISTANT III    SR8    #900525(S)    1.00  
(For count purposes only)

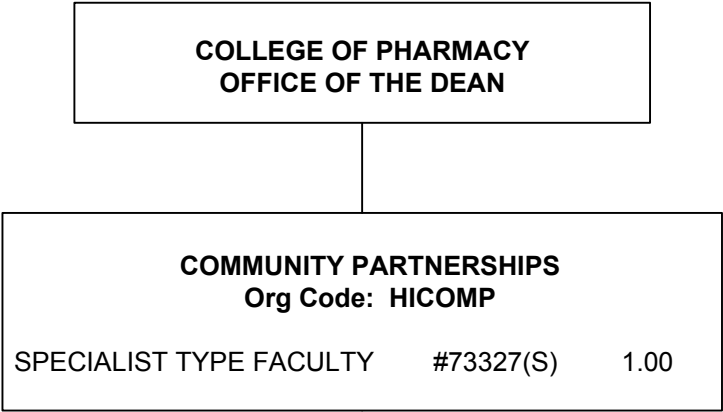


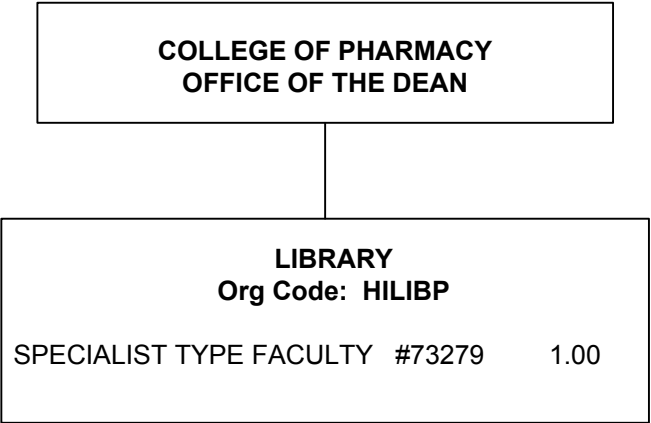
@ Pending Establishment

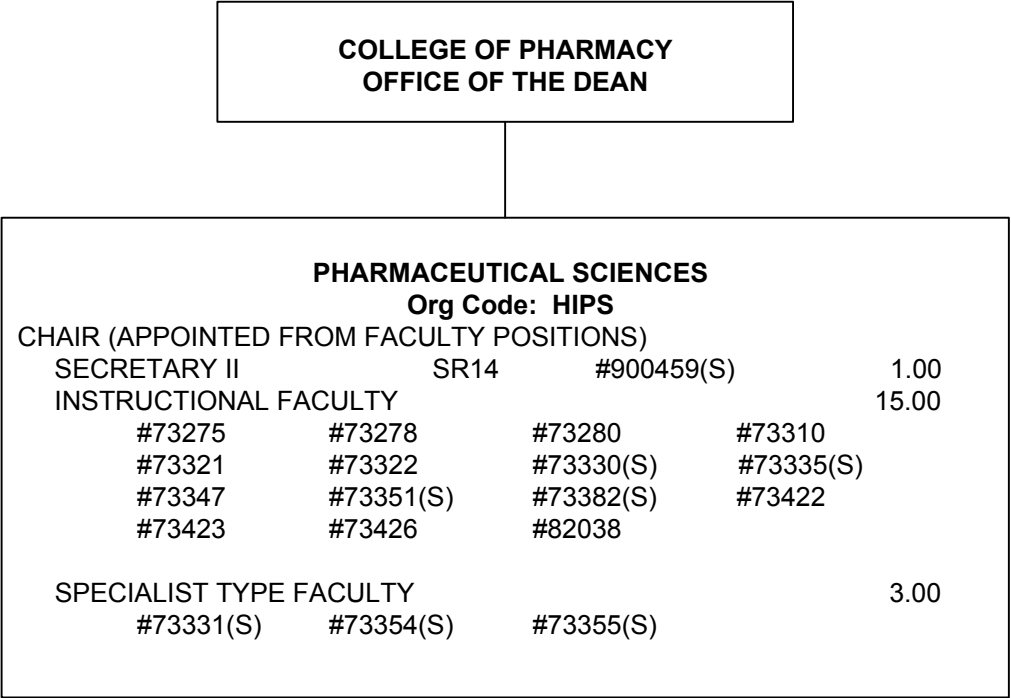


COLLEGE OF PHARMACY  
OFFICE OF THE DEAN

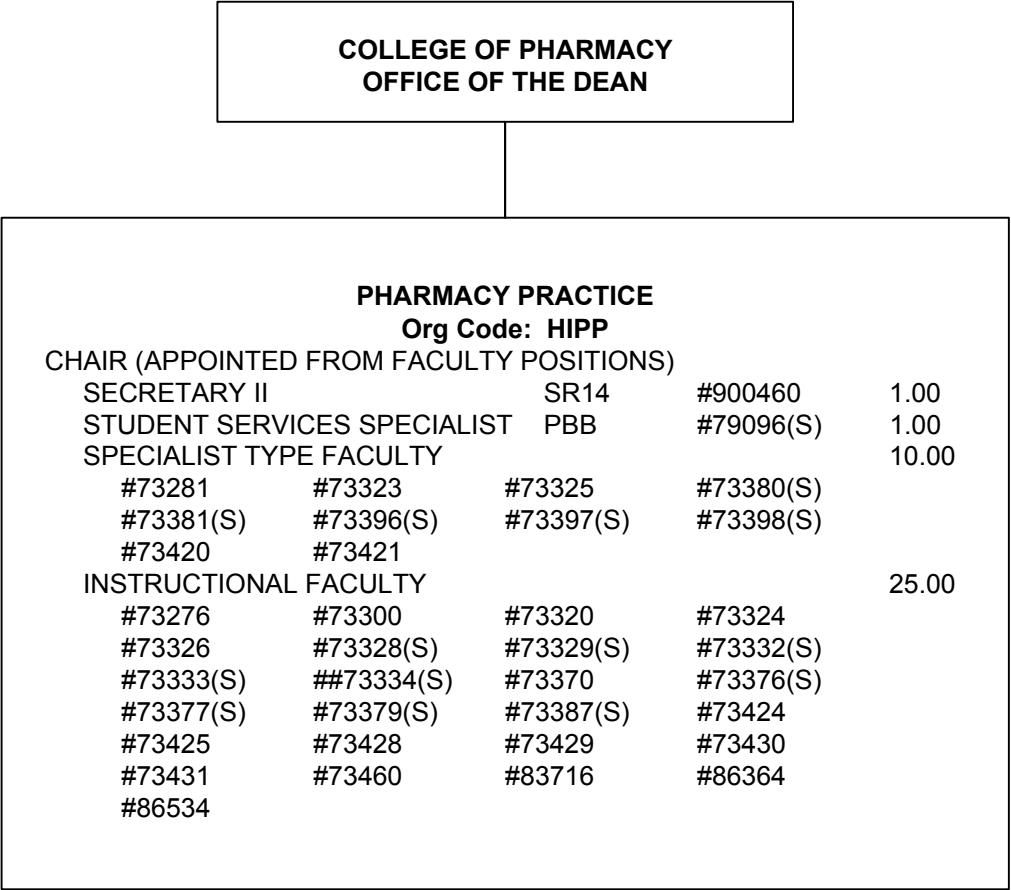
STUDENT AFFAIRS Org code: HIOSA			
STUDENT SERVICES SPECIALIST	PBB #77435(S)	1.00	
STUDENT SERVICES SPECIALIST	PBB #78531(S)	1.00	
ACADEMIC SUPPORT SPECIALIST	PBB #79356(S)	1.00	
STUDENT SERVICES SPECIALIST	PBA #79256(S)	1.00	



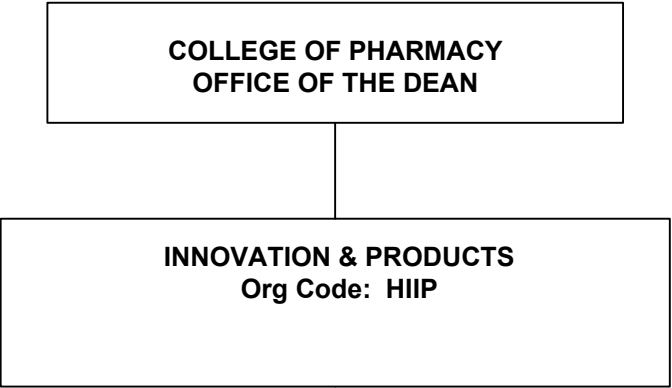


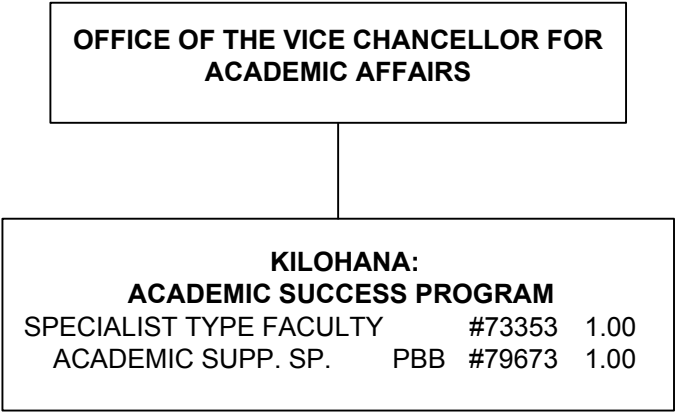


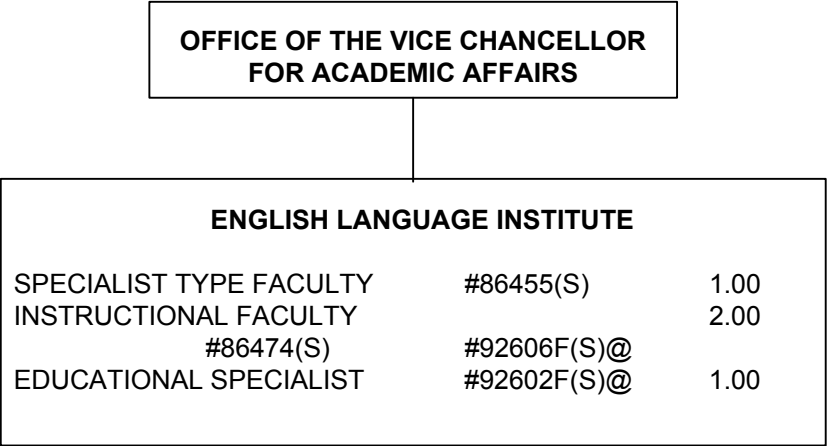
Footnote:  
OFFICE ASSISTANT III SR8 #900633(S) 1.00  
(For count purposes only)











@ Pending Establishment