

STATE OF HAWAI'I
UNIVERSITY OF HAWAI'I
UNIVERSITY OF HAWAI'I AT MĀNOA
OFFICE OF THE PROVOST
COLLEGES OF ARTS AND SCIENCES
COLLEGE OF ARTS AND HUMANITIES
Organization Chart
Chart I

DEPARTMENT TOTAL: PERM TEMP
General Funds: 198.50 3.00

OFFICE OF THE PROVOST

COLLEGE OF ARTS AND HUMANITIES
OFFICE OF THE DEAN
Org Code: MADNAH

Dean, #89198	1.00
Secretary III, SR-16, #35033	1.00
Associate Dean, #89260	1.00
System Admin, PBA, #81388	1.00

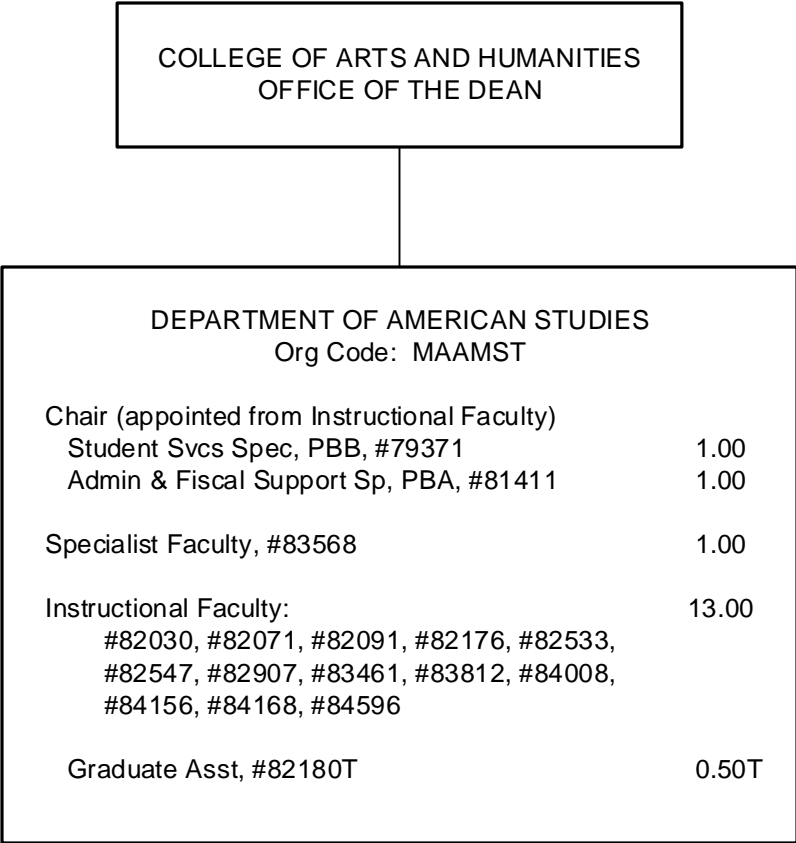
ADMINISTRATIVE SERVICES
Org Code: MAASAH

Admin Svcs Manager, PBC, #80828	1.00
Admin Officer, PBB #78625, #81228	2.00
HR Spec, PBB, #78313	1.00
HR Spec, PBA, #79811	1.00
Admin & Fiscal Supp Spec, PBA, #77715, #81911	2.00

DEPARTMENTS
Org Code: MADPAH
Charts II-A through II-I

American Studies
Art and Art History
History
Music
Philosophy
Religion
Communicology
Theatre and Dance
Academy for Creative Media

CHART TOTAL: PERM TEMP
General Funds: 11.00 - -



COLLEGE OF ARTS AND HUMANITIES
OFFICE OF THE DEAN

DEPARTMENT OF ART AND ART HISTORY		
Org Code: MAARTH		
Chair (appointed from Instructional Faculty)		
Admin & Fiscal Supp Spec, PBA:		
#77525, #77920		2.00
Office Asst III, SR-08, #14366		1.00
Educational Spec, PBB:		
#80499, #80667, #80726, #81319		4.00
Machinist, PBB, #81041		
		1.00
Specialist Faculty:		
#83066		1.00
Associate Chair (appointed from Instructional Faculty)		
Instructional Faculty:		
		19.00
#82067, #82142, #82275, #82445, #82501,		
#82583, #82584, #82886, #82995, #83230,		
#83315, #83323, #83588, #83752, #83956,		
#84050, #84232, #84461, #84464		
Graduate Asst:		
		3.00
#82514, #82601, #88120, #88152, #88242,		0.50T
#88456, #82136T		

STATE OF HAWAI'I
UNIVERSITY OF HAWAI'I
UNIVERSITY OF HAWAI'I AT MĀNOA
OFFICE OF THE PROVOST
COLLEGES OF ARTS AND SCIENCES
COLLEGE OF ARTS AND HUMANITIES
DEPARTMENT OF ART AND ART HISTORY
Organization Chart
Chart II-B

COLLEGE OF ARTS AND HUMANITIES
OFFICE OF THE DEAN

STATE OF HAWAI'I
UNIVERSITY OF HAWAI'I
UNIVERSITY OF HAWAI'I AT MĀNOA
OFFICE OF THE PROVOST
COLLEGES OF ARTS AND SCIENCES
COLLEGE OF ARTS AND HUMANITIES
DEPARTMENT OF HISTORY
Organization Chart
Chart II-C

DEPARTMENT OF HISTORY	
Org Code: MAHIST	
Chair (appointed from Instructional Faculty)	
Secretary I, SR-12, #15261	1.00
Student Svcs Spec, PBA, #78140	1.00
Associate Chair (appointed from Instructional Faculty)	
Director of World Civilizations Program (appointed from Instructional Faculty)	
Instructional Faculty:	27.00
#82025, #82044, #82147, #82164, #82191, #82370, #82428, #82475, #82612, #82655, #83010, #83318, #83322, #83415, #83576, #83676, #83754, #83989, #84155, #84161, #84241, #84333, #84415, #84432, #84524, #84839, #85448	
Graduate Asst:	2.50
#88030, #88323, #88329, #88342, #88547	

1/ To be redescribed

COLLEGE OF ARTS AND HUMANITIES
OFFICE OF THE DEAN

DEPARTMENT OF MUSIC Org Code: MAMUS		
Chair (appointed from Instructional Faculty)		
Secretary II, SR-14, #11959		1.00
Educational Spec, PBB: #80381, #80866 (0.50)		1.50
Admin & Fiscal Support Spec, PBA, #81033		1.00
Educational Spec, PBA, #81965		1.00
Associate Chair (appointed from Instructional Faculty)		
Instructional Faculty:		20.00
#82213, #82401, #82438, #82592, #82739, #82752, #82818, #82948, #83048, #83284, #83361, #83454, #83501, #83686, #84061, #84387, #84406, #84442, #84635, #85088		
Graduate Asst:		3.00
#88019, #88136, #88237, #88265, #88283, #88603		

COLLEGE OF ARTS AND HUMANITIES
OFFICE OF THE DEAN

DEPARTMENT OF PHILOSOPHY		
Org Code: MAPHIL		
Chair (appointed from Instructional Faculty)		
Admin & Fiscal Supp Spec, PBA, #77431		1.00
Office Asst III, SR-08, #15263		1.00
Editor, PBA, #79339		0.75
Specialist Type Faculty, #82014, #83528		2.00
Instructional Faculty:		11.00
#82156, #82325, #82350, #82474, #82558, #82877, #83165, #83316, #83554, #84419, #84794		
Graduate Asst:		2.50
#88184, #88213, #88388, #88487, #88507, #82132T		0.50T

STATE OF HAWAI'I
UNIVERSITY OF HAWAI'I
UNIVERSITY OF HAWAI'I AT MĀNOA
OFFICE OF THE PROVOST
COLLEGES OF ARTS AND SCIENCES
COLLEGE OF ARTS AND HUMANITIES
DEPARTMENT OF PHILOSOPHY
Organization Chart
Chart II-E

COLLEGE OF ARTS AND HUMANITIES
OFFICE OF THE DEAN

DEPARTMENT OF RELIGION Org Code: MAREL		
Chair (appointed from Instructional Faculty) Secretary II, SR-14, #15012		1.00
Instructional Faculty: #82065, #82203, #82205, #82340, #84056, #84089		6.00
Graduate Asst: #82189, #82590, #88026, #88084, #88093, #88282, #88556		3.50

STATE OF HAWAI'I
UNIVERSITY OF HAWAI'I
UNIVERSITY OF HAWAI'I AT MĀNOA
OFFICE OF THE PROVOST
COLLEGES OF ARTS AND SCIENCES
COLLEGE OF ARTS AND HUMANITIES
DEPARTMENT OF RELIGION
Organization Chart
Chart II-F

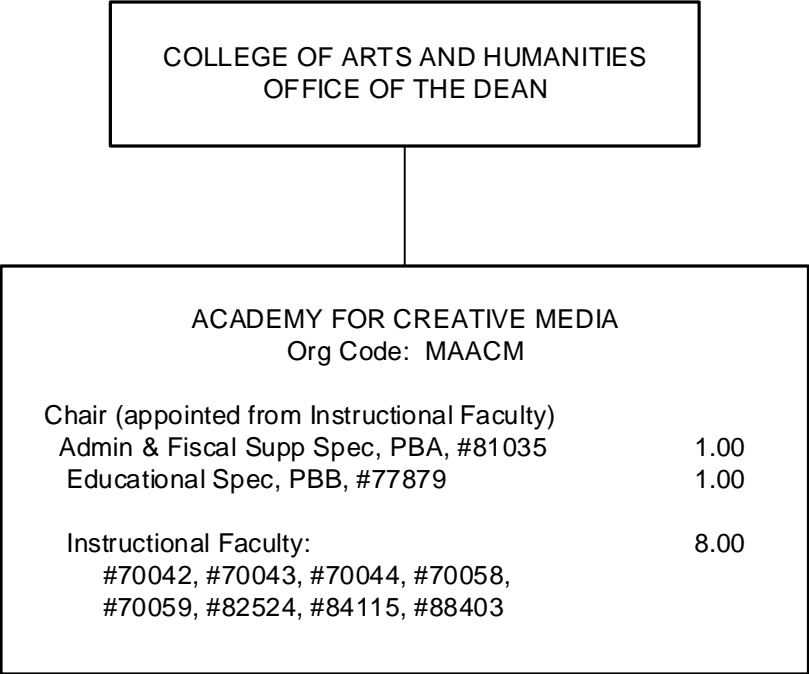
COLLEGE OF ARTS AND HUMANITIES
OFFICE OF THE DEAN

DEPARTMENT OF COMMUNICOLOGY		
Org Code: MASP		
Chair (appointed from instructional faculty)		
Admin & Fiscal Supp Spec, PBA, #80946		1.00
Office Asst III, SR-08, #35122		1.00
Instructional Faculty:		9.00
#82158, #82187, #82237, #82375, #82437, #83777, #82504, #84579, #84859		
Graduate Asst:		1.50
#82525, #82526, #82604, #82119T		0.50T

STATE OF HAWAIʻI
UNIVERSITY OF HAWAIʻI
UNIVERSITY OF HAWAIʻI AT MĀNOA
OFFICE OF THE PROVOST
COLLEGES OF ARTS AND SCIENCES
COLLEGE OF ARTS AND HUMANITIES
DEPARTMENT OF COMMUNICOLOGY
Organization Chart
Chart II-G

COLLEGE OF ARTS AND HUMANITIES
OFFICE OF THE DEAN

DEPARTMENT OF THEATRE AND DANCE		
Org Code: MATD		
Chair (appointed from Instructional Faculty)		
Secretary II, SR-14, #13647		1.00
Theater/Stage Manager, PBB, #80119		1.00
Theater Technician, PBB:		3.00
#78466, #80700, #81269		
Operations Coordinator, PBA, #80994		1.00
Director of Dance Program		
(appointed from Instructional Faculty)		
Admin & Fiscal Supp Spec, PBA, #77076		1.00
Instructional Faculty:		17.00
#82110, #82161, #82227, #82234, #82260,		
#82302, #82640, #83250, #83252, #83337,		
#83436, #83439, #83591, #84095, #84434,		
#84574, #84678		
Graduate Asst:		6.00
#82419, #82549, #82568, #88000, #88051,		1.00T
#88052, #88053, #88127, #88207, #88211,		
#88246, #88324, #82117T, #82123T		



STATE OF HAWAIʻI
UNIVERSITY OF HAWAIʻI
UNIVERSITY OF HAWAIʻI AT MĀNOA
OFFICE OF THE PROVOST
COLLEGES OF ARTS AND SCIENCES
COLLEGE OF ARTS AND HUMANITIES
ACADEMY FOR CREATIVE MEDIA
Organization Chart
Chart II-I