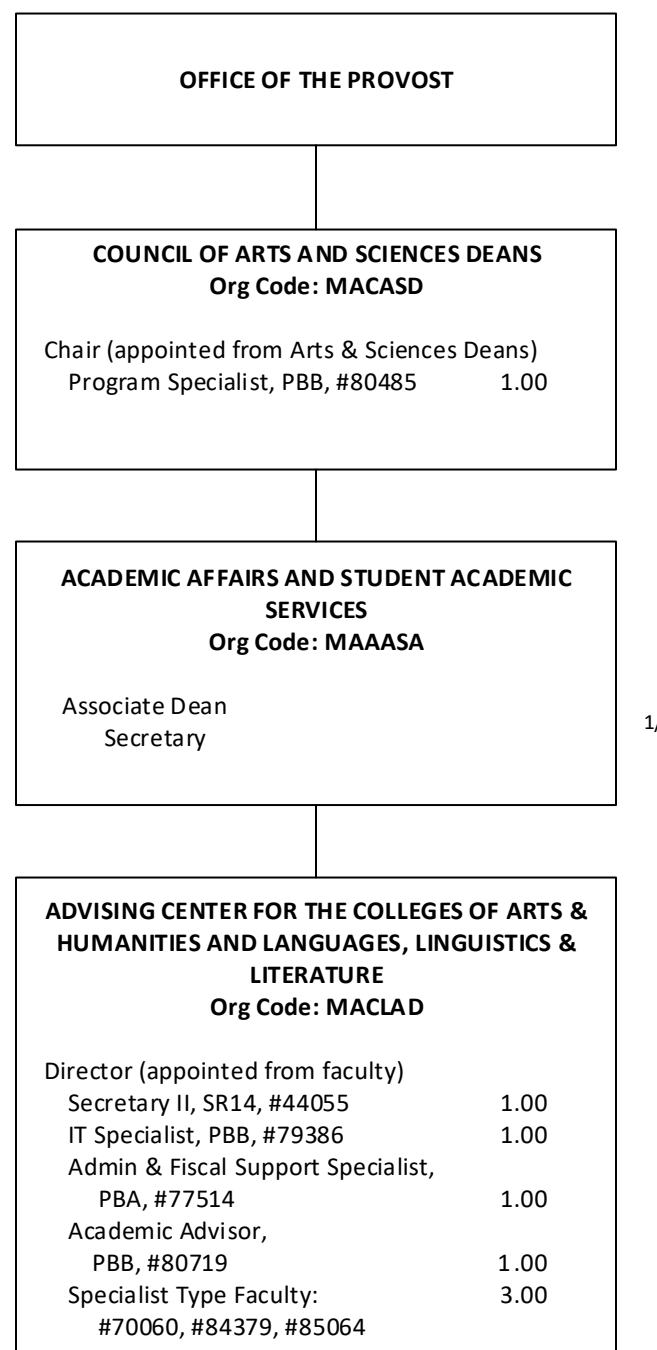


STATE OF HAWAII
 UNIVERSITY OF HAWAII
 UNIVERSITY OF HAWAII AT MĀNOA
 OFFICE OF THE PROVOST
COLLEGES OF ARTS AND SCIENCES
 Organization Chart
 Chart I



DEPARTMENT TOTAL: PERM TEMP
 General Funds: 8.00 --

1/

CHART TOTAL: PERM TEMP
 General Funds: 8.00 --