

STATE OF HAWAI'I  
UNIVERSITY OF HAWAI'I  
UNIVERSITY OF HAWAI'I AT MĀNOA  
OFFICE OF THE PROVOST

SHIDLER COLLEGE OF BUSINESS  
ORGANIZATION CHART  
CHART I

SHIDLER COLLEGE OF BUSINESS  
OFFICE OF THE DEAN  
Org Code: MADNBS

Dean, #890271.00  
Secretary III, SR-16, #080401.00  
Director of Graduate Programs

DEPARTMENT TOTAL: PERM TEMP  
General Funds: 81.00 1.00

ACADEMIC AFFAIRS  
Org Code: MAADBS

Associate Dean, #891201.00

ADMINISTRATIVE/FISCAL SERVICES  
Org Code: MAASBS

Administrative Officer, Senior, PBB, #806851.00  
Administrative Officer, PBB, #784361.00  
Admin & Fiscal Support Specialist, PBA, #771631.00

OFFICE OF COMPUTER RESOURCES AND  
TELECOMMUNICATIONS  
Org Code: MAITBS

IT Manager, PBB, #807401.00  
System Admin, PBB:  
#80705, #811202.00  
Institutional Policy Analyst, PBB, #804691.00

STUDENT SERVICES  
Org Code: MASSBS

Assistant Dean, #891591.00  
Secretary II, SR-14, #152661.00  
Office Assistant IV, SR-10, #152591.00  
Specialist Type Faculty: #82593, #82805, #83438,  
#83509, #84164, #84924, #864687.00

PACIFIC RESEARCH INSTITUTE FOR  
INFORMATION SYSTEMS MANAGEMENT  
Org Code: MAPRIM

Director  
Administrative Officer, PBB, #811501.00

PACIFIC ASIAN MANAGEMENT  
INSTITUTE  
Org Code: MAPAMI

Director

ASIA-PACIFIC CENTER FOR EXECUTIVE  
DEVELOPMENT  
Org Code: MAACED

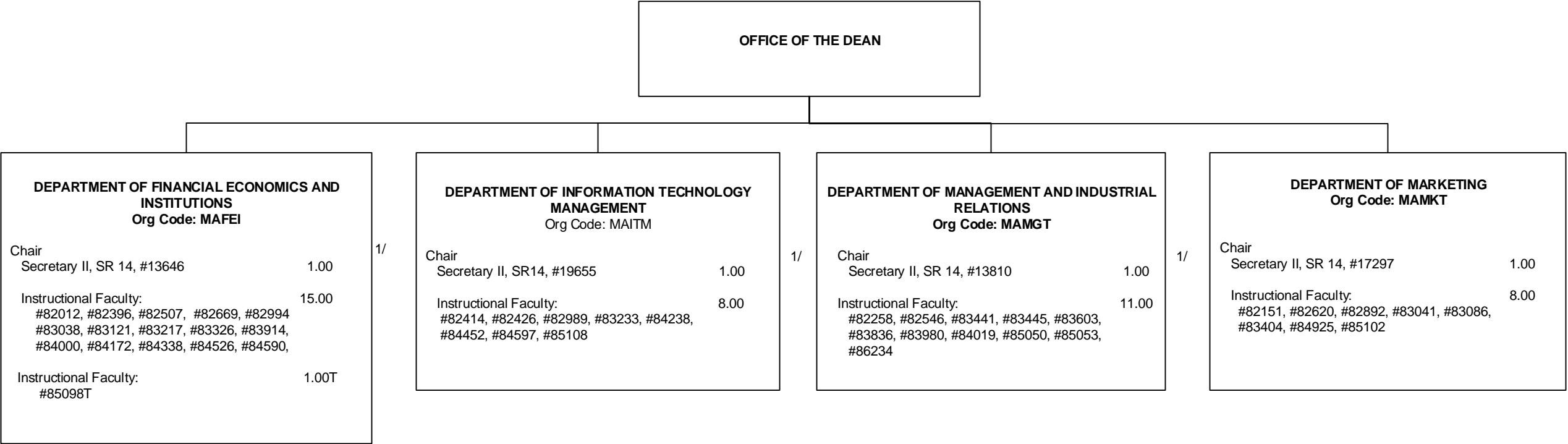
Non-Appropriated Funds

INSTRUCTIONAL DEPARTMENTS  
Org Code: MABUS  
Chart II

SCHOOL OF ACCOUNTANCY  
Org Code: MAACC

Chair  
Secretary II, SR 14, #118931.00  
Instructional Faculty: 13.00  
#82106, #82220, #82439, #82443,  
#82477, #83090, #83351, #83375,  
#83434, #83681, #85107, #86235,  
#88087

1/ Appointed from Instructional Faculty: Director of Graduate Programs in Office of the Dean; Director in Pacific Asian Management Institute; and Chair in School of Accountancy  
2/ Director in Pacific Research Institution for Information Systems Management pending, to be re-established.



1/ All Department Chair positions appointed from Instructional Faculty.