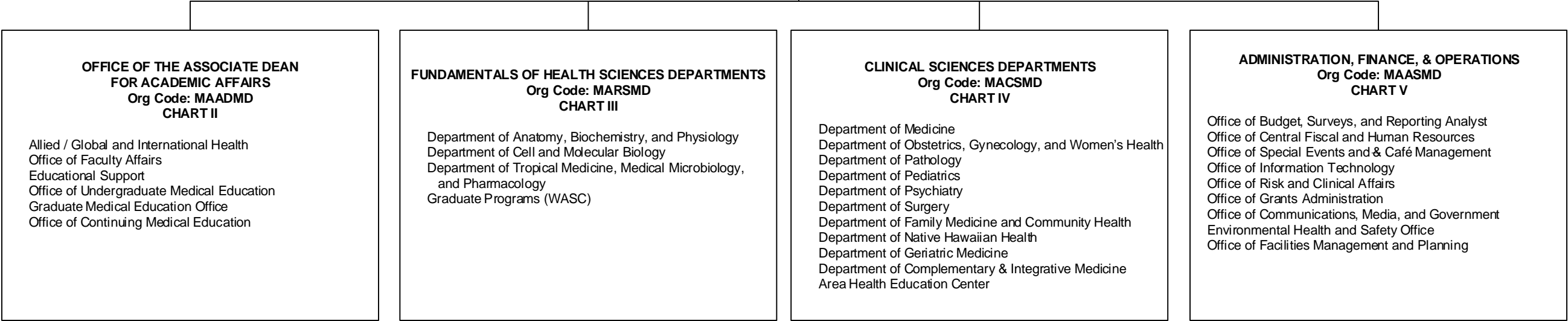
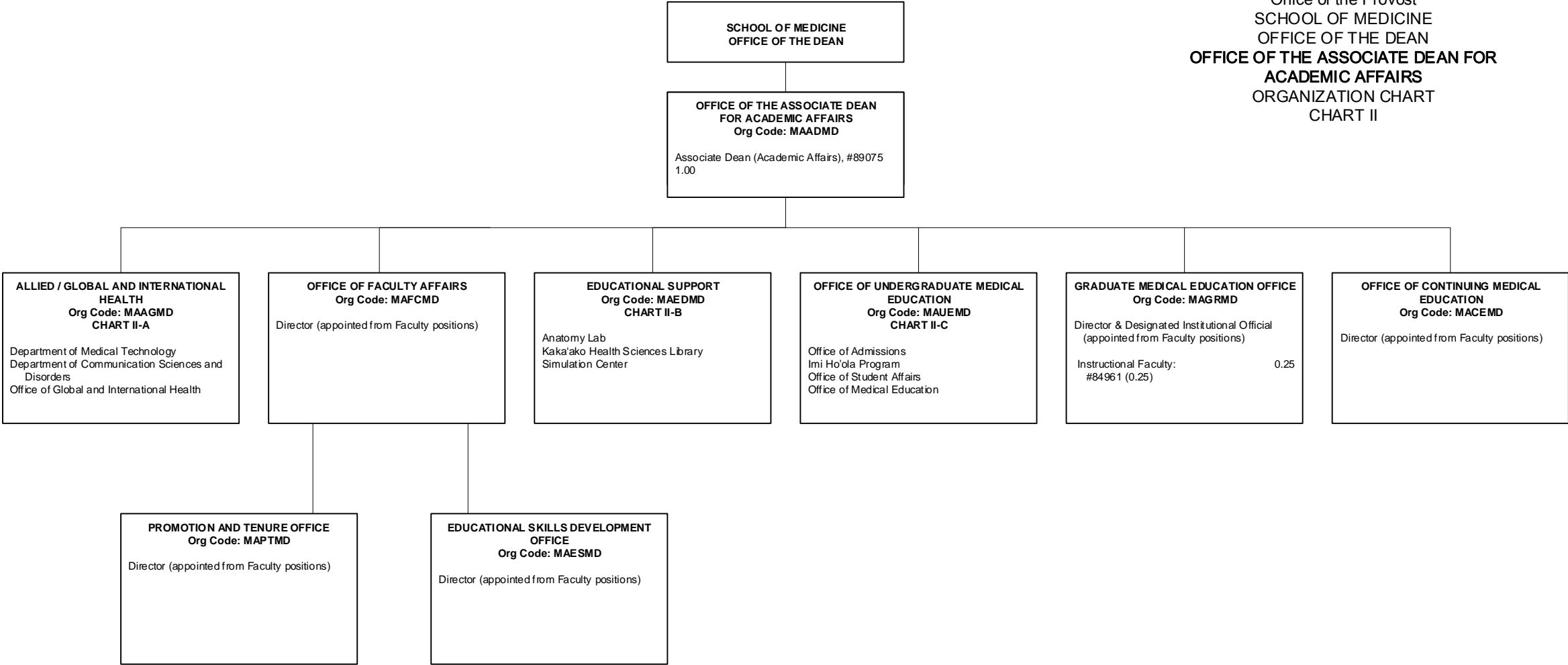


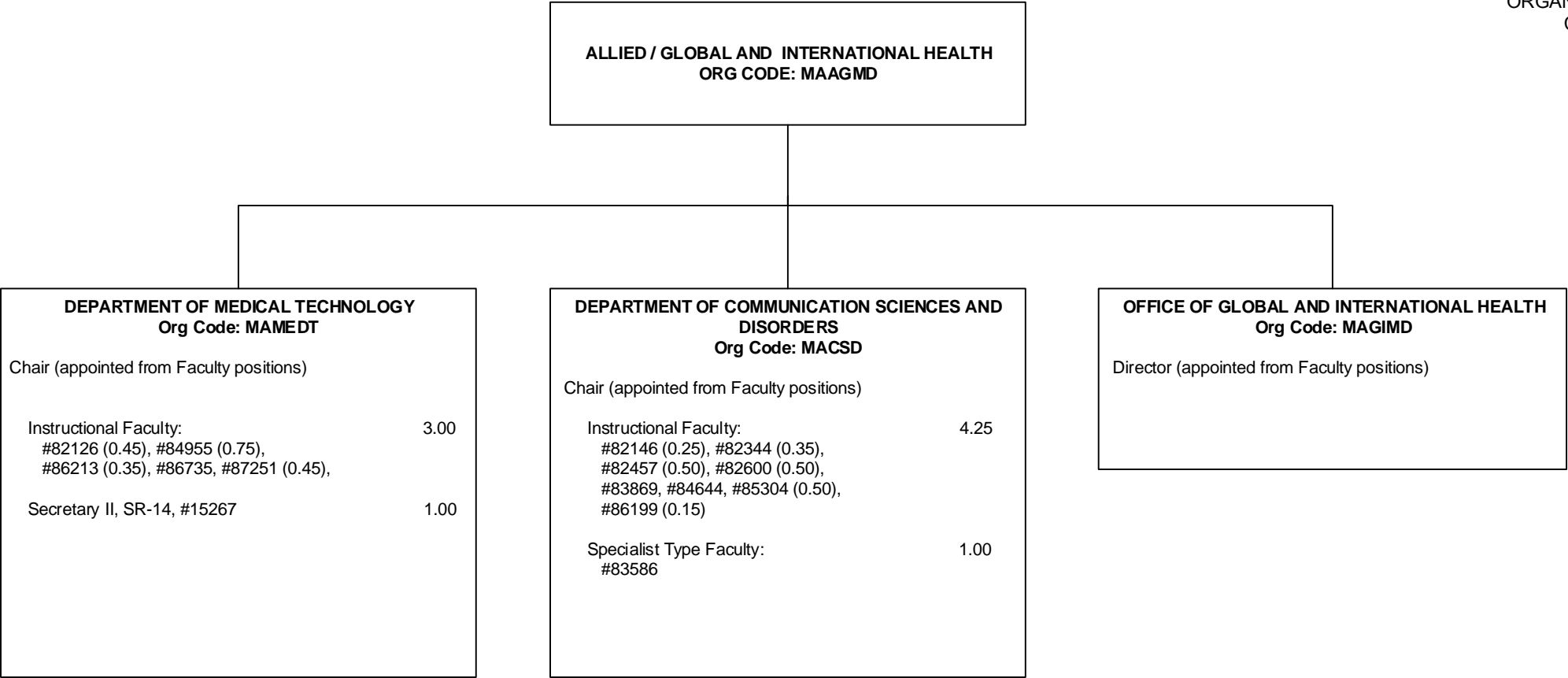
DEPARTMENT TOTAL:	PERM	TEMP
General Funds:	216.60	3.50

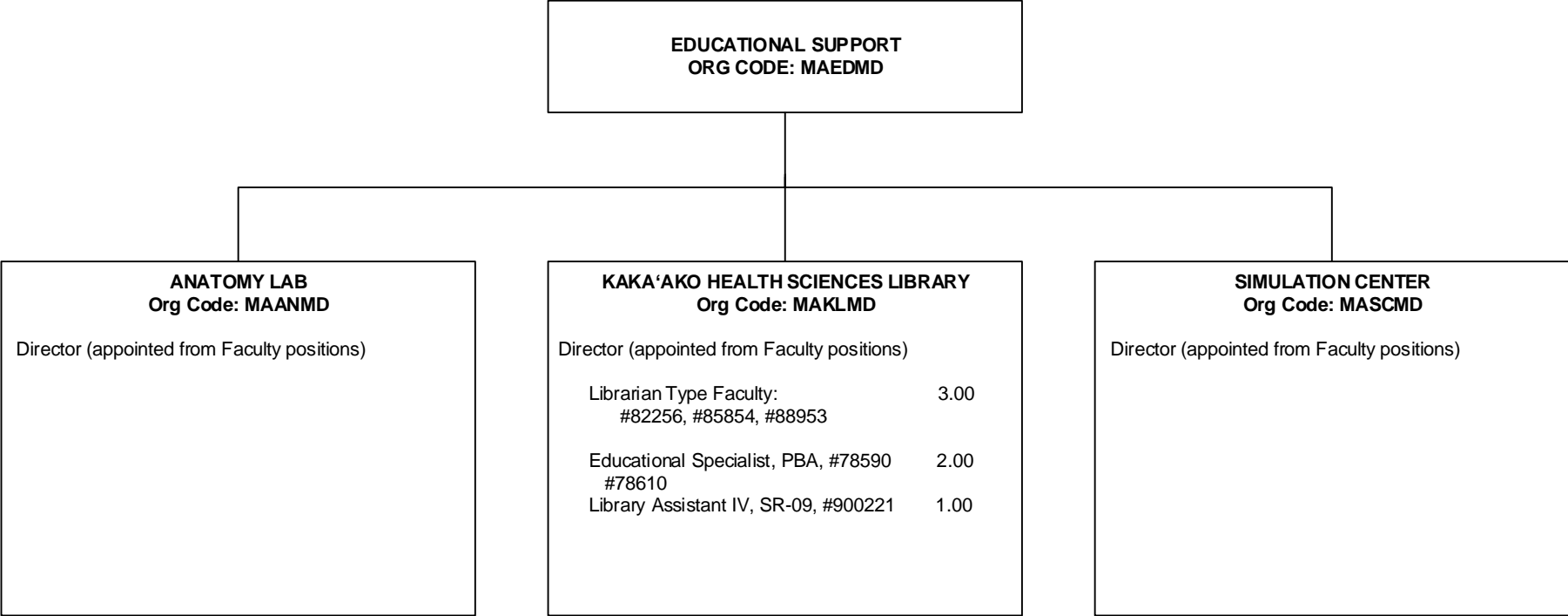


\* - To be established  
(0.40 FTE from #83391, reference Chart III, Anatomy)

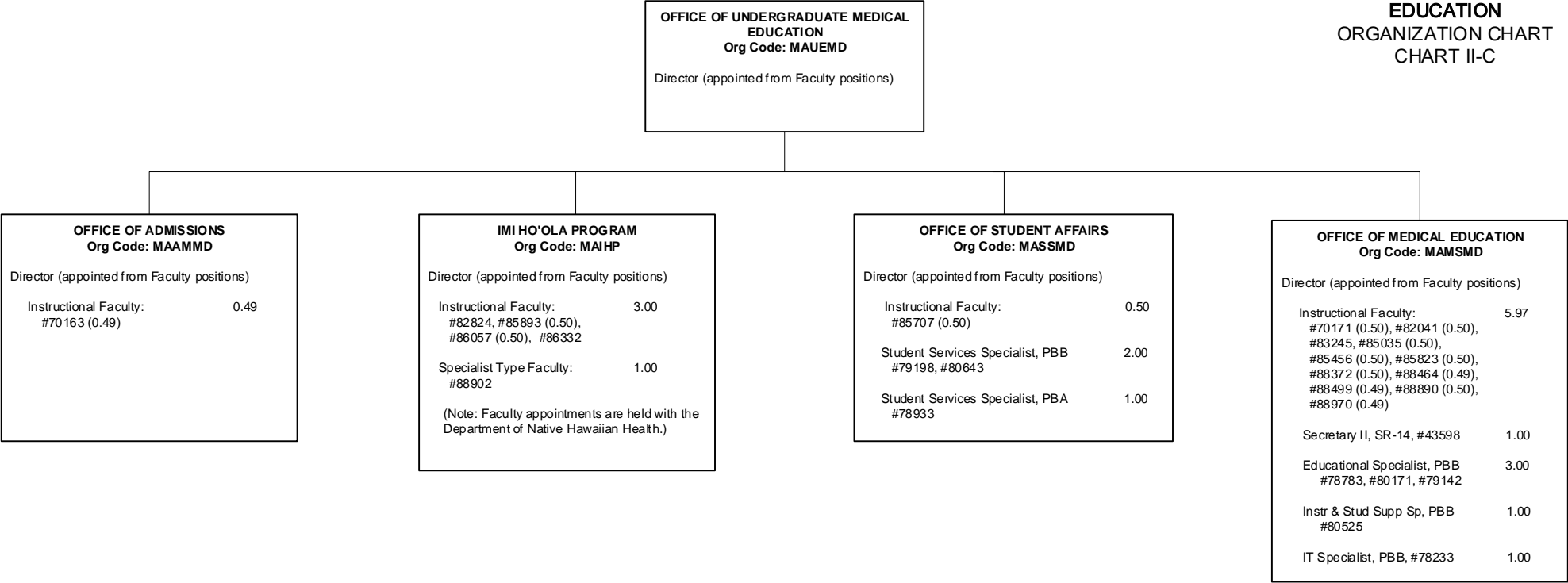
CHART TOTAL:	PERM	TEMP
General Funds:	2.40	1.00

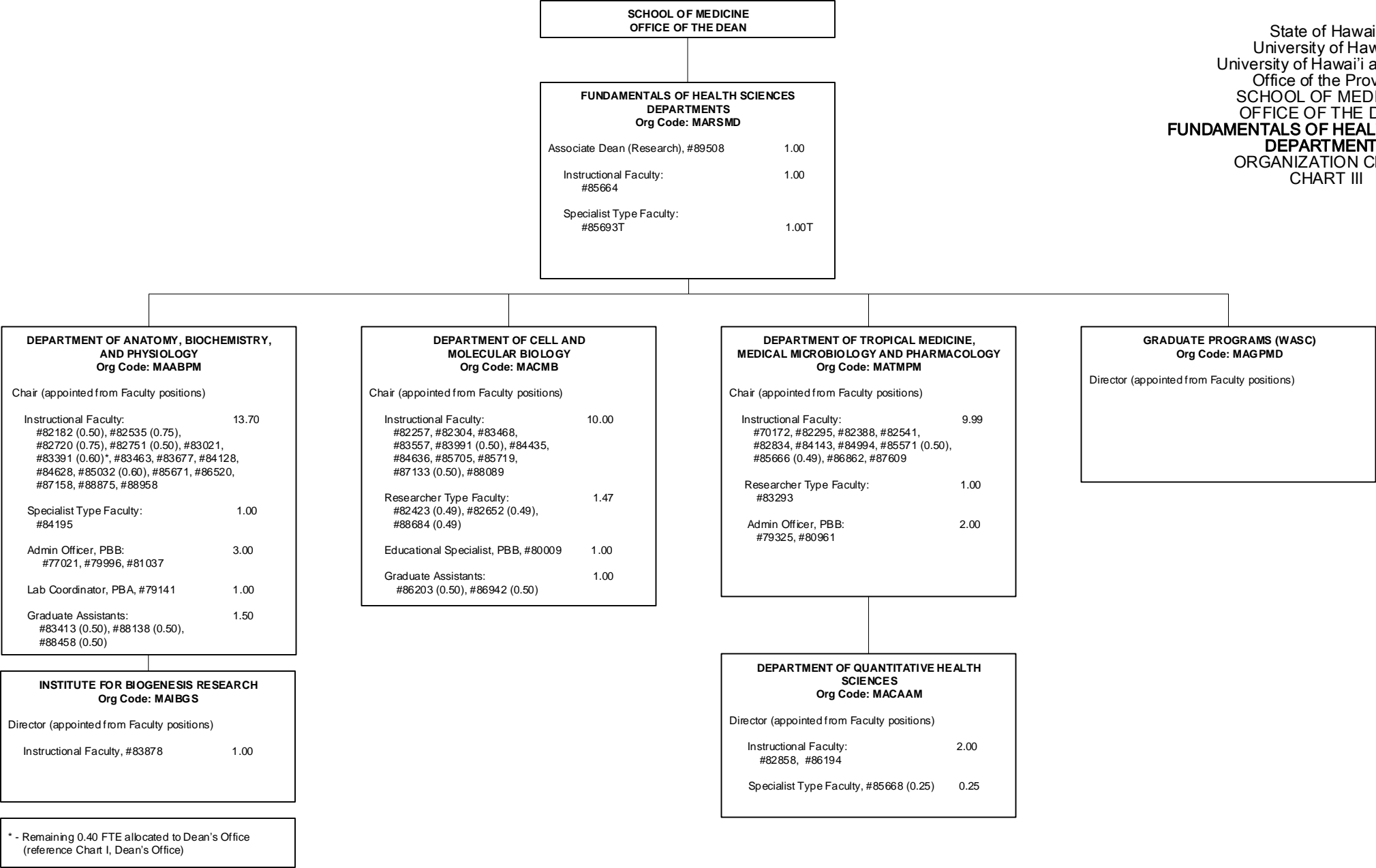


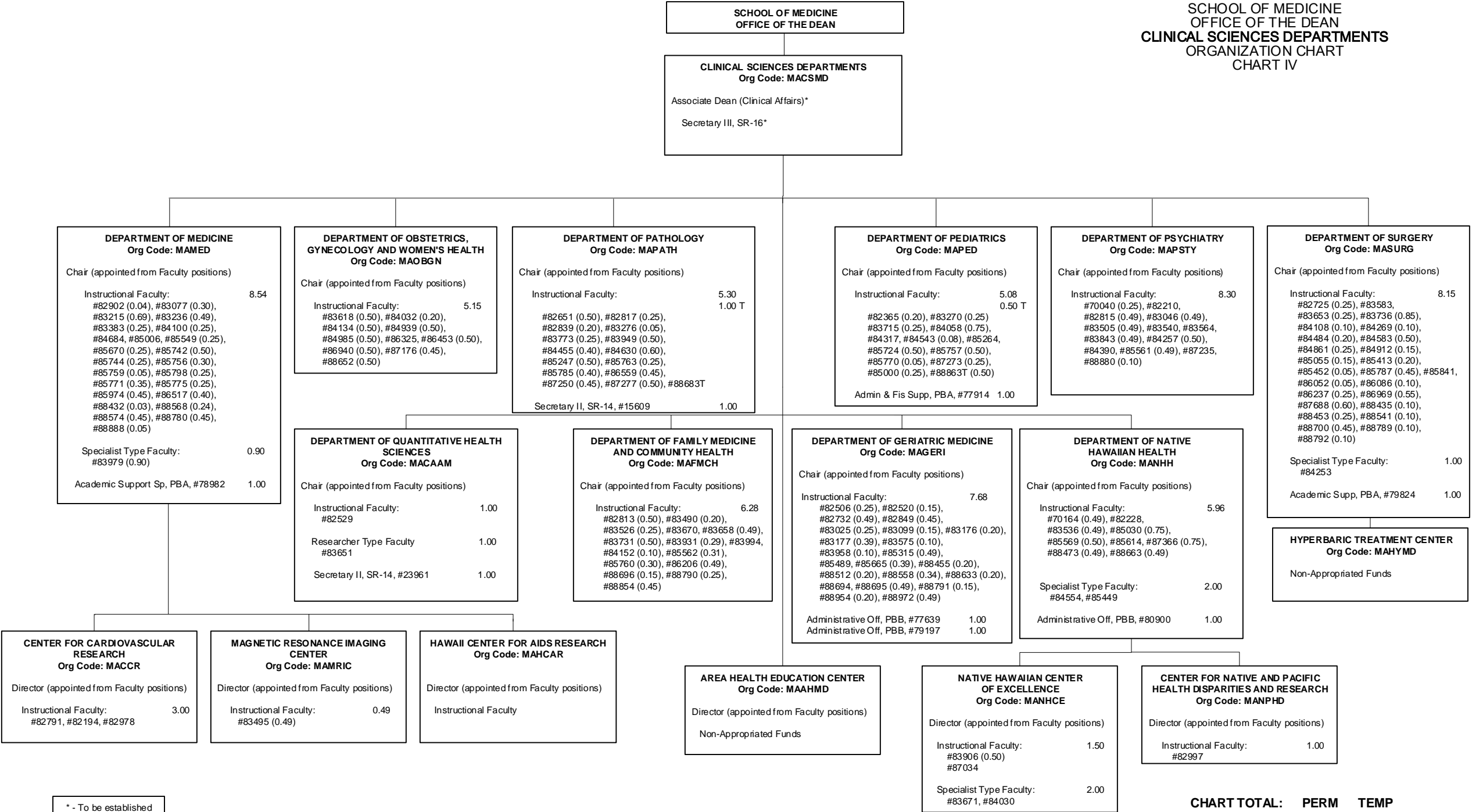


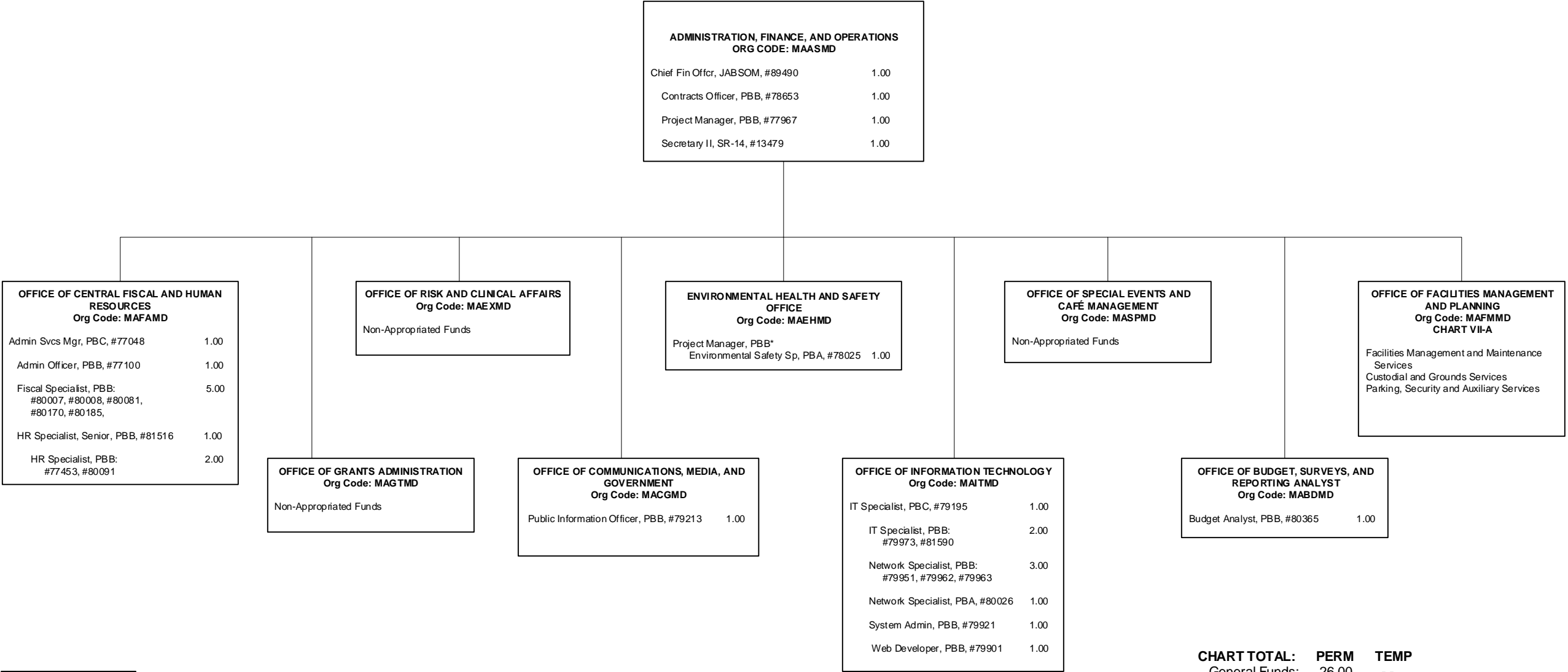


State of Hawai'i  
University of Hawai'i  
University of Hawai'i at Mānoa  
Office of the Provost  
SCHOOL OF MEDICINE  
OFFICE OF THE DEAN  
OFFICE OF THE ASSOCIATE DEAN FOR  
ACADEMIC AFFAIRS  
OFFICE OF UNDERGRADUATE MEDICAL  
EDUCATION  
ORGANIZATION CHART  
CHART II-C









\* - To be established



