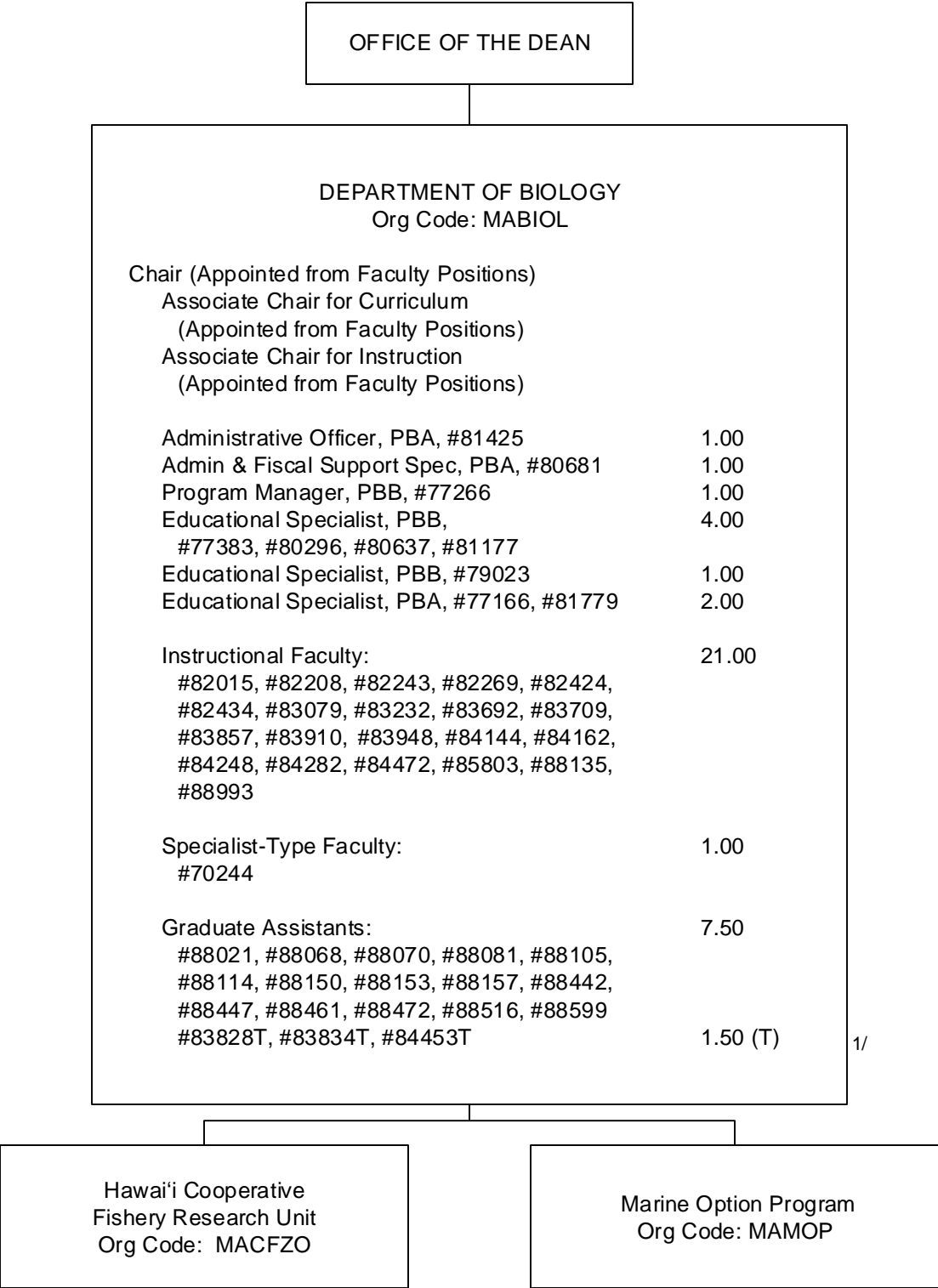
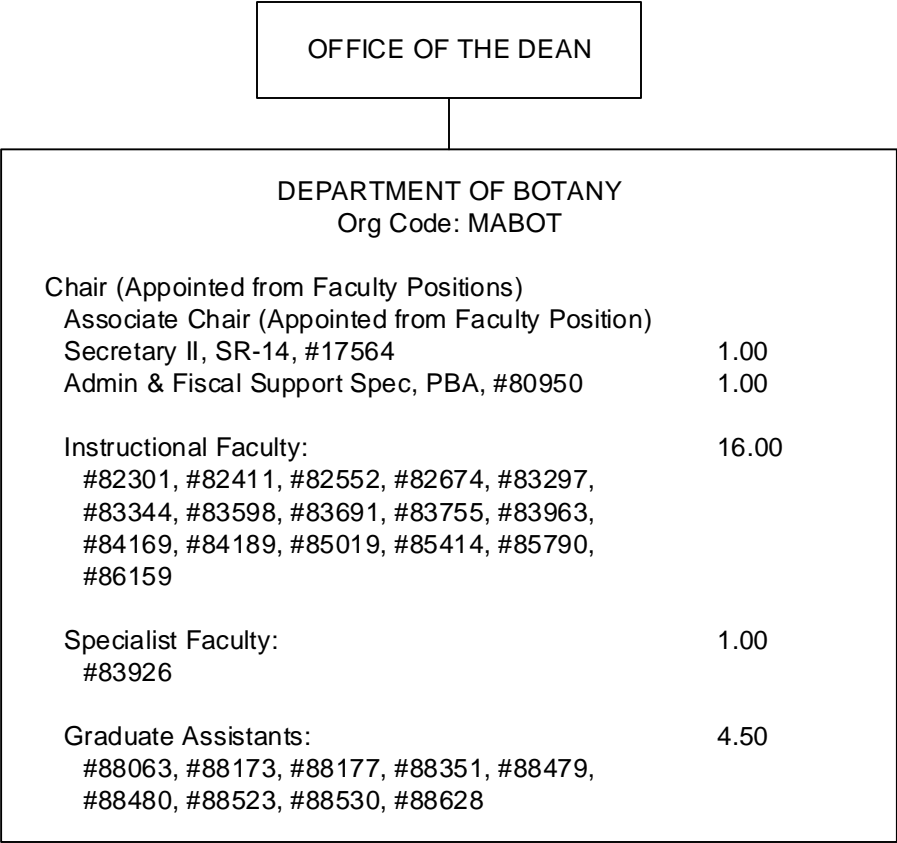


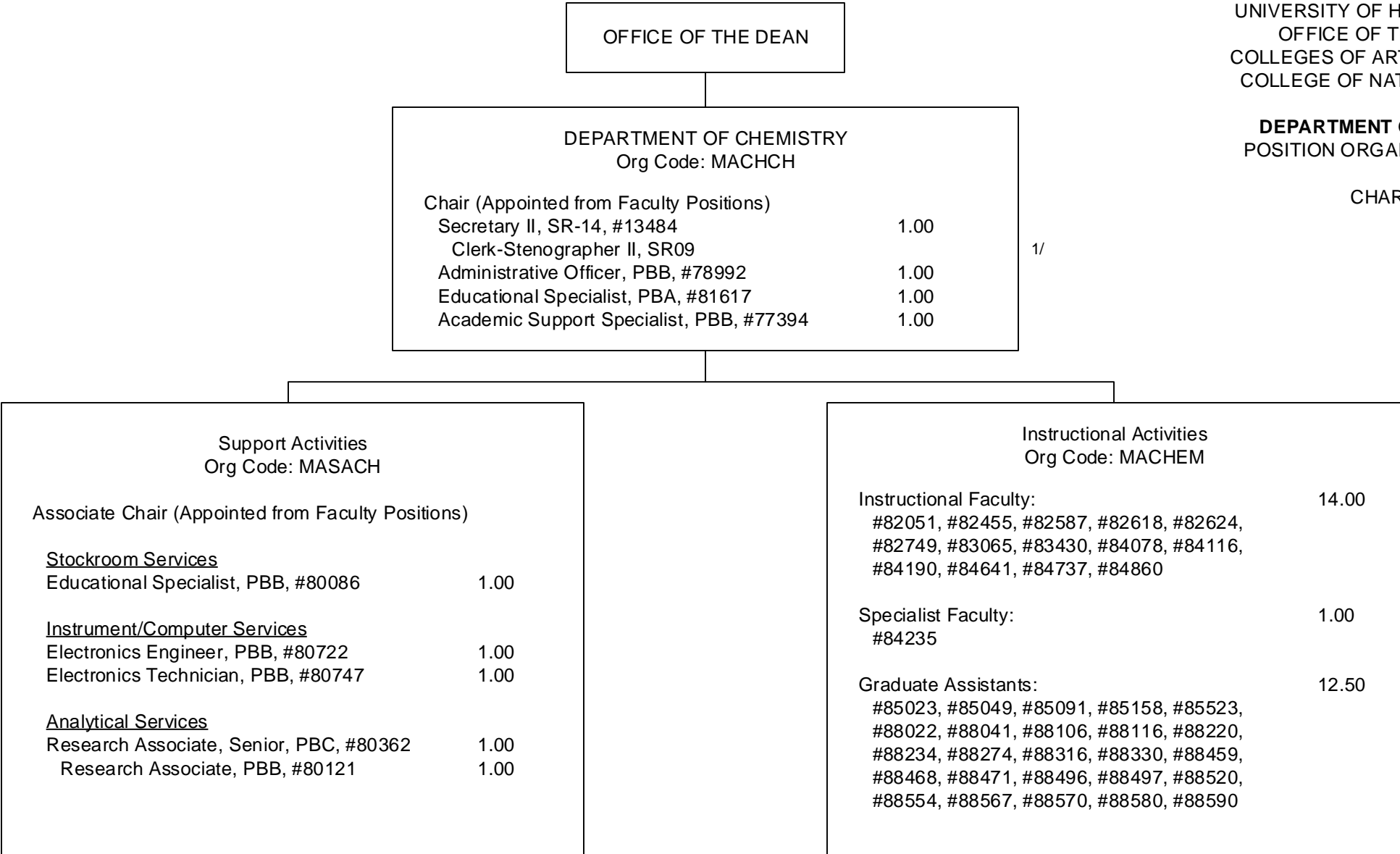
1/ Admin & Fiscal Support Spec, #78362T in Administrative Services is an appropriated temporary position



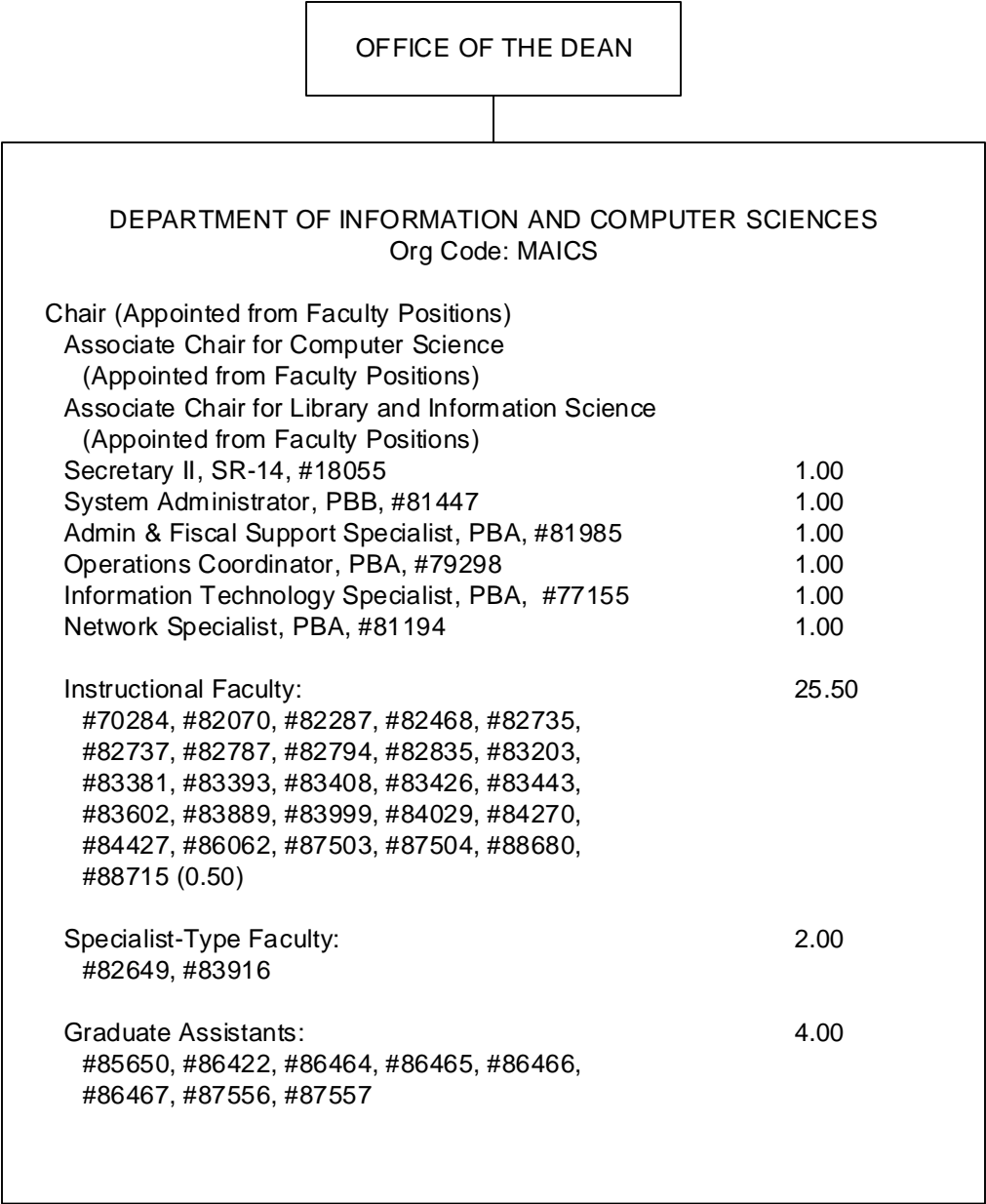


DEPARTMENT OF CHEMISTRY
POSITION ORGANIZATION CHART

CHART II-C



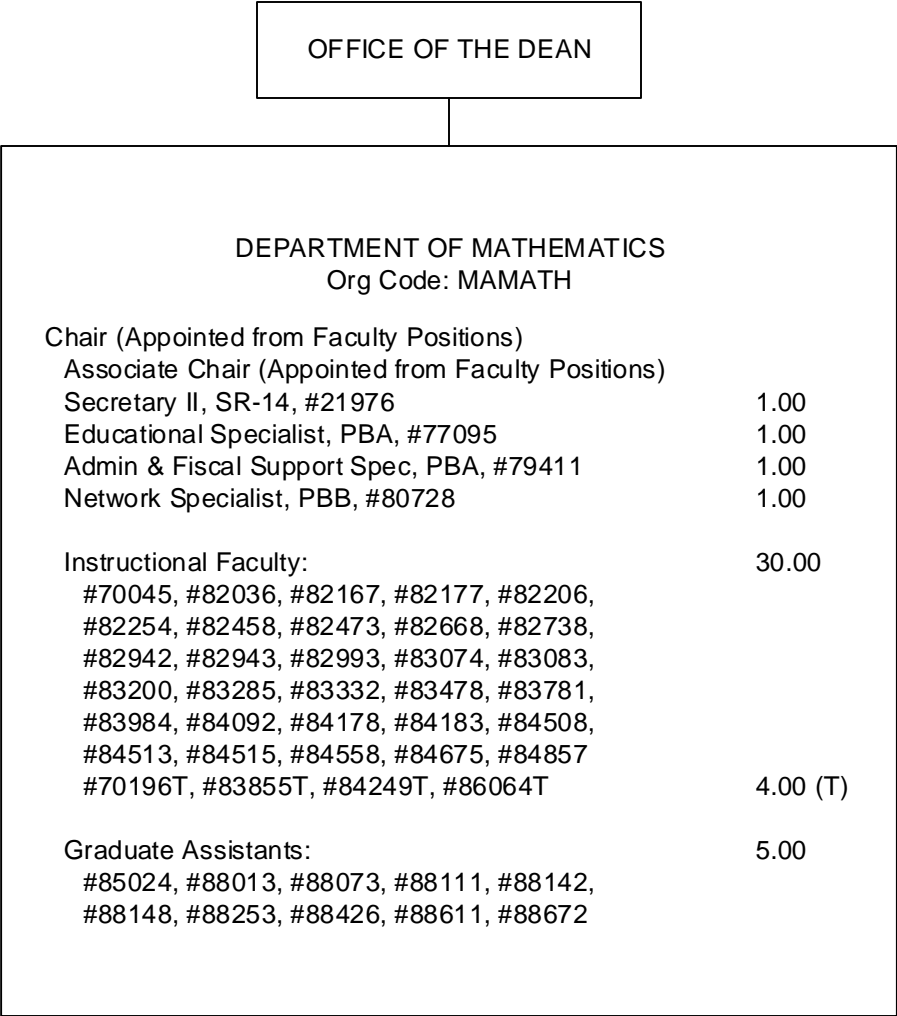
1/ Clerk Steno II in Department of Chemistry abolished, pending re-establishment.

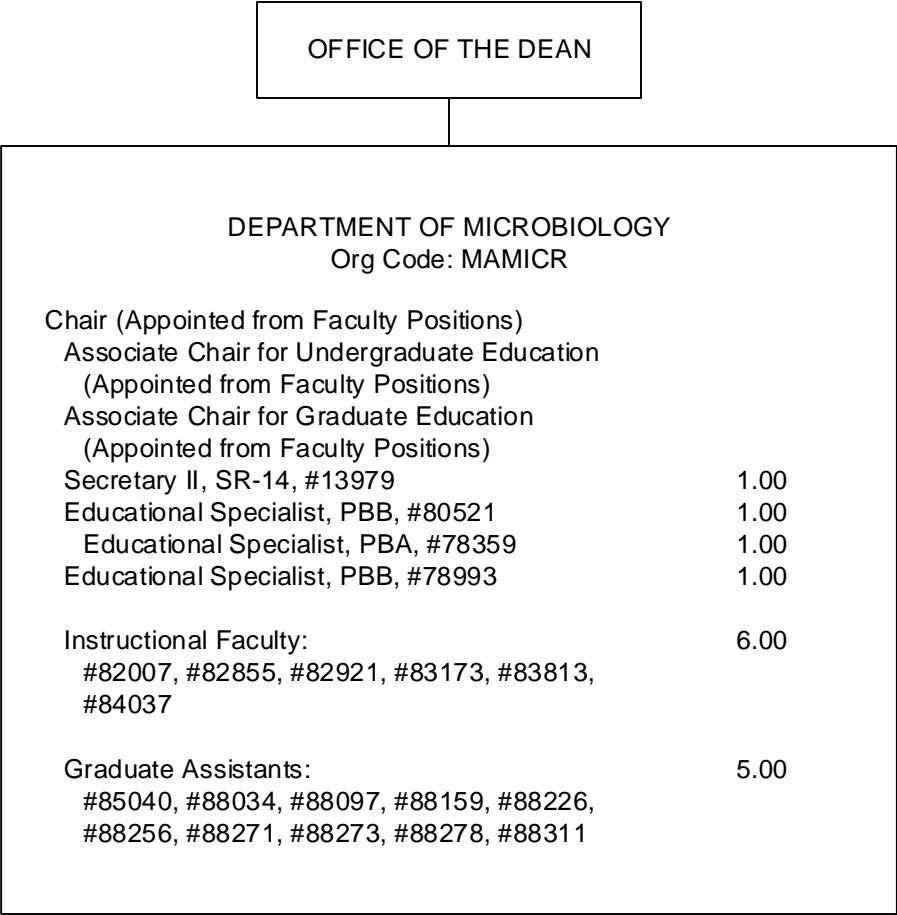


STATE OF HAWAI'I
UNIVERSITY OF HAWAI'I
UNIVERSITY OF HAWAI'I AT MĀNOA
OFFICE OF THE PROVOST
COLLEGES OF ARTS AND SCIENCES
COLLEGE OF NATURAL SCIENCES

DEPARTMENT OF INFORMATION
AND COMPUTER SCIENCES
POSITION ORGANIZATION CHART

CHART II-D





STATE OF HAWAI'I
UNIVERSITY OF HAWAI'I
UNIVERSITY OF HAWAI'I AT MĀNOA
OFFICE OF THE PROVOST
COLLEGES OF ARTS AND SCIENCES
COLLEGE OF NATURAL SCIENCES

DEPARTMENT OF MICROBIOLOGY
POSITION ORGANIZATION CHART

CHART II-F

OFFICE OF THE DEAN

STATE OF HAWAI'I
UNIVERSITY OF HAWAI'I
UNIVERSITY OF HAWAI'I AT MĀNOA
OFFICE OF THE PROVOST
COLLEGES OF ARTS AND SCIENCES
COLLEGE OF NATURAL SCIENCES

DEPARTMENT OF PHYSICS AND ASTRONOMY
POSITION ORGANIZATION CHART

CHART II-G

DEPARTMENT OF PHYSICS AND ASTRONOMY Org Code: MAPA		
Chair (Appointed from Faculty Positions)		
Associate Chair (Appointed from Faculty Position)		
Office Assistant III,SR-08, #14355	1.00	
Admin & Fiscal Support Specialist, PBA, #77577	1.00	
Scientific Instrument Technician, PBB, #80706	1.00	
Scientific Instrument Technician, PBB, #80703	1.00	
Instructional Faculty:	17.00	
#82217, #82314, #82633, #82770, #82875, #83534, #83547, #83790, #83861, #83915, #84240, #84398, #84494, #84587, #84852, #84876, #88615		
Specialist Faculty: #70061	1.00	
Graduate Assistants:	5.50	
#88176, #88198, #88270, #88309, #88385, #88389, #88441, #88478, #88524, #88593, #88650, #83844T, #84184T		
	1.00 (T)	

1/

1/ Graduate Asst, #83844T and #84184T are appropriated temporary positions.